



An Oshkosh Corporation Business

ARTICULATING CRANE



Table of Contents

2.5/18.....	3	1910RCS	15
3.2/23.....	4	1920RCS	16
610MCS/610RC	5	2310RCS	17
710RCS	6	2320RCS	18
810MCS/810RC	7	2810RCS	19
910RCS	8	2820RCS	20
10/72SL	9	32/222.....	21
10/72DL.....	10	40/275.....	22
12/86SL.....	11	50/345.....	23
12/86DL.....	12	7020.....	24
1610RCS	13	9520.....	25
1620RCS	14	Accessories.....	26-28

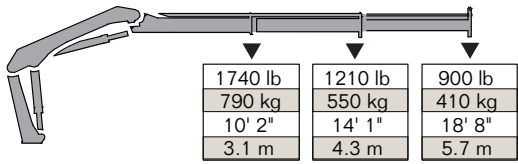


2.5/18

Articulating Crane Technical Specifications

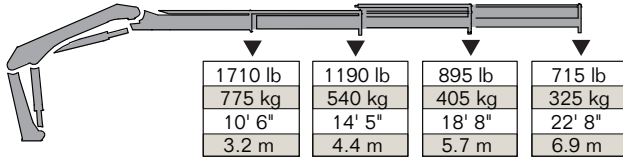
2.5/18 LIFTING CAPACITIES

2.5/18 - 2 Hydraulic



1740 lb 790 kg 10' 2" 3.1 m	1210 lb 550 kg 14' 1" 4.3 m	900 lb 410 kg 18' 8" 5.7 m
--------------------------------------	--------------------------------------	-------------------------------------

2.5/18 - 3 Hydraulic



1710 lb 775 kg 10' 6" 3.2 m	1190 lb 540 kg 14' 5" 4.4 m	895 lb 405 kg 18' 8" 5.7 m	715 lb 325 kg 22' 8" 6.9 m
--------------------------------------	--------------------------------------	-------------------------------------	-------------------------------------

Available as a Manual Control or Wireless Remote Control Crane.



Note: Crane appearance subject to change.

SPECIFICATIONS

Crane Storage Height	5' (1527 mm)
Crane Base Width	1' 10" (564 mm)
Rotational Torque	2820 ft-lb (390 kgm)
Rotation	370°
Optimum Pump Performance	
K2	3.2 gpm (12 L/min)
K3	2.6 gpm (10 L/min)
System Pressure	2755 psi (190 bar)
Oil Reservoir Capacity	3.96 gal (15 L)
Stabilizer Span and Weights	
Standard Reach	9' 10" (3000 mm)
Weight (manual out/fixed down)	130 lb (59 kg)
Extended Reach	12' 10" (3900 mm)
Weight (manual out/fixed down)	130 lb (59 kg)
Stabilizer Pad	5.5" (140 mm)

MINIMUM CHASSIS SPECIFICATIONS*

Front Axle Rating (GAWF)	5000 lb
Rear Axle Rating (GAWR)	9000 lb
Minimum Resistance to Bending Moment per Frame Rail	270,000 lb-in

2.5/18 SPECIFICATIONS

	2 - Hydraulic	3 - Hydraulic
Crane Rating**	18,085 ft-lb (2.5 tm)	17,360 ft-lb (2.4 tm)
Max Horizontal Reach	18' 4" (5.6 m)	23' (7 m)
Max Vertical Reach	23' 10" (7.3 m)	28' 1" (8.6 m)
Max Capacity	1741 lb (790 kg)	1709 lb (775 kg)
Max Cap @ Max Reach	900 lb (410 kg)	715 lb (325 kg)
Crane Weight***	851 lb (386 kg)	928 lb (421 kg)

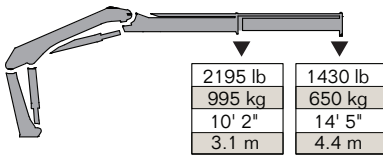
*The gross vehicle weight rating (GVWR) is a minimum guideline. Contact IMT if you have questions regarding your particular installation.

**Crane rating (ft-lb) is the rated load (lb) multiplied by the respective distance (ft) from centerline of rotation with all extensions retracted and the inner and outer booms in a horizontal position, per ANSI B30.22.

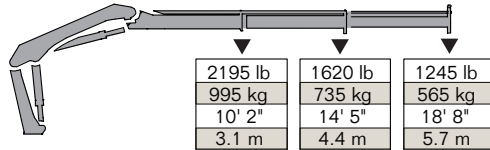
***Crane weight is dry and does not include stabilizers, hydraulic tank and accessories.

3.2/23 LIFTING CAPACITIES

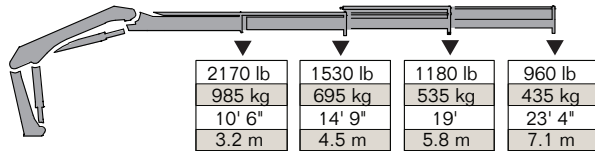
3.2/23 - 1 Hydraulic



3.2/23 - 2 Hydraulic



3.2/23 - 3 Hydraulic



Note: Crane appearance subject to change.

Available as a Manual Control or Wireless Remote Control Crane.

SPECIFICATIONS

Crane Storage Height	5' 3" (1591 mm)
Crane Base Width	1' 9" (516 mm)
Rotational Torque	3980 ft-lb (550 kgm)
Rotation	370°
Optimum Pump Performance	
K1 & K2	4 gpm (15 L/min)
K3	3.2 gpm (12 L/min)
System Pressure	3190 psi (220 bar)
Oil Reservoir Capacity	5.3 gal (20 L)
Stabilizer Span and Weights	
Standard Reach	10' 10" (3300 mm)
Weight (manual out/fixed down)	160 lb (72 kg)
Extended Reach	12' 10" (3900 mm)
Weight (manual out/fixed down)	160 lb (72 kg)
Stabilizer Pad	5.5" (140 mm)

MINIMUM CHASSIS SPECIFICATIONS*

Front Axle Rating (GAWF)	5000 lb
Rear Axle Rating (GAWR)	9000 lb
Minimum Resistance to Bending Moment per Frame Rail	345,000 lb-in

3.2/23 SPECIFICATIONS

	1 - Hydraulic	2 - Hydraulic	3 - Hydraulic
Crane Rating**	23,145 ft-lb (3.2 tm)	23,145 ft-lb (3.2 tm)	23,145 ft-lb (3.2 tm)
Max Horizontal Reach	14' 5" (4.4 m)	18' 8" (5.7 m)	23' 4" (7.1 m)
Max Vertical Reach	20' 4" (6.2 m)	24' 7" (7.5 m)	29' 2" (8.9 m)
Max Capacity	2195 lb (995 kg)	2195 lb (995 kg)	2170 lb (985 kg)
Max Cap @ Max Reach	1430 lb (650 kg)	1245 lb (565 kg)	960 lb (435 kg)
Crane Weight***	920 lb (418 kg)	1030 lb (468 kg)	1120 lb (508 kg)

*The gross vehicle weight rating (GVWR) is a minimum guideline. Contact IMT if you have questions regarding your particular installation.

**Crane rating (ft-lb) is the rated load (lb) multiplied by the respective distance (ft) from centerline of rotation with all extensions retracted and the inner and outer booms in a horizontal position, per ANSI B30.22.

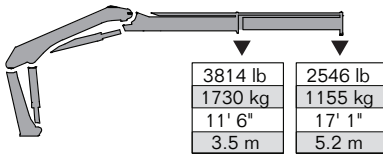
***Crane weight is dry and does not include stabilizers, hydraulic tank and accessories.

610MCS/610RC

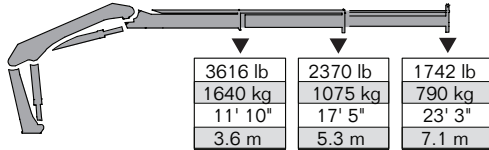
Articulating Crane Technical Specifications

610MCS/610RC LIFTING CAPACITIES

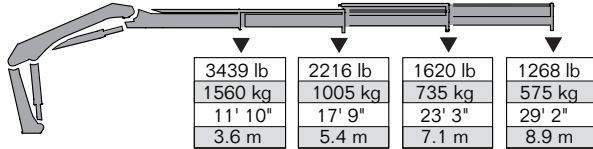
610MCS/610RC - 1 Hydraulic



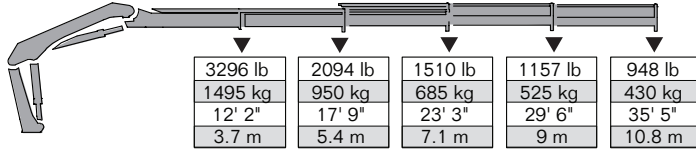
610MCS/610RC - 2 Hydraulic



610MCS/610RC - 3 Hydraulic



610MCS/610RC - 4 Hydraulic



Available as a Manual Control Crane (610MCS) or Wireless Remote Control Crane (610RC)

MINIMUM CHASSIS SPECIFICATIONS*

Front Axle Rating (GAWF)	6000 lb
Rear Axle Rating (GAWR)	12,460 lb
Minimum Resistance to Bending Moment per Frame Rail	585,000 lb-in

610MCS/610RC SPECIFICATIONS

	1 - Hydraulic	2 - Hydraulic	3 - Hydraulic	4 - Hydraulic
Crane Rating**	39,370 ft-lb (6.0 tm)	38,713 ft-lb (5.9 tm)	36,745 ft-lb (5.6 tm)	36,089 ft-lb (5.5 tm)
Max Horizontal Reach	17' 1" (5.2 m)	23' 3" (7.1 m)	29' 2" (8.9 m)	35' 5" (10.8 m)
Max Vertical Reach	26' 6" (8.0 m)	29' 10" (9.1 m)	36' 1" (11 m)	42' 4" (12.9 m)
Max Capacity	6526 lb (2960 kg)	6360 lb (2885 kg)	6206 lb (2815 kg)	6107 lb (2770 kg)
Max Cap @ Max Reach	2546 lb (1155 kg)	1742 lb (790 kg)	1268 lb (575 kg)	948 lb (430 kg)
Crane Weight***	1389 lb (630 kg)	1554 lb (705 kg)	1708 lb (775 kg)	1841 lb (835 kg)

*The gross vehicle weight rating (GVWR) is a minimum guideline. Contact IMT if you have questions regarding your particular installation.

**Crane rating (ft-lb) is the rated load (lb) multiplied by the respective distance (ft) from centerline of rotation with all extensions retracted and the inner and outer booms in a horizontal position, per ANSI B30.22.

***Crane weight is dry and does not include stabilizers, hydraulic tank and accessories.



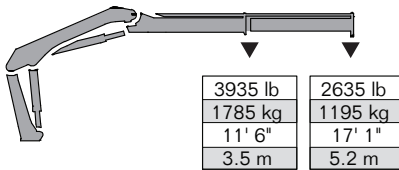
Note: Crane appearance subject to change.

SPECIFICATIONS

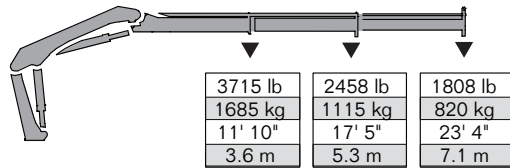
Crane Storage Height	6' 2" (1895 mm)
Crane Base Width	2' 2" (664 mm)
Rotational Torque	5900 ft-lb (8 kNm)
Rotation	400°
Optimum Pump Performance Fixed	6.6 gpm (25 L/min)
System Pressure	4714 psi (325 bar)
Oil Reservoir Capacity and Weight	14.5 gal (55 L) and 77 lb (35 kg)
Stabilizer Span and Weights	
Short Span	11' 2" (3400 mm)
Weight (manual out/hydraulic down)	253 lb (115 kg)
Weight (manual out/hydraulic down swing-up)	265 lb (120 kg)
Standard Span	14' 5" (4400 mm)
Weight (manual out/hydraulic down)	309 lb (140 kg)
Weight (manual out/hydraulic down swing-up)	319 lb (145 kg)
Wide Span	17' 1" (5200 mm)
Weight (manual out/hydraulic down)	352 lb (160 kg)
Weight (manual out/hydraulic down swing-up)	363 lb (165 kg)
Stabilizer Pad	5.5" (140 mm)

710RCS LIFTING CAPACITIES

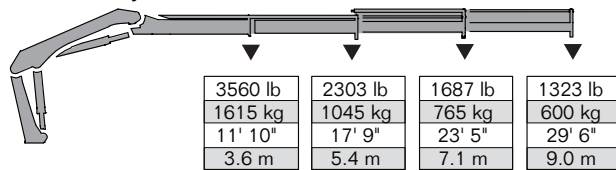
710RCS - 1 Hydraulic



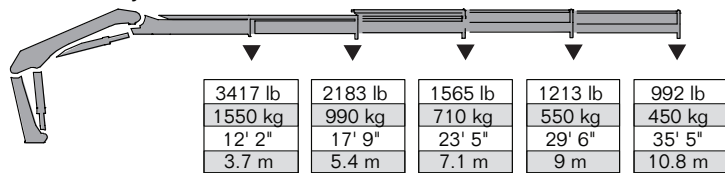
710RCS - 2 Hydraulic



710RCS - 3 Hydraulic



710RCS - 4 Hydraulic



Available as a Wireless Remote Control Crane only.



Note: Crane appearance subject to change.

SPECIFICATIONS

Crane Storage Height	6' 2" (1895 mm)
Crane Base Width	2' 2" (664 mm)
Rotational Torque	5900 ft-lb (8 kNm)
Rotation	400°
Optimum Pump Performance Fixed	10.6 gpm (40L/min)
System Pressure	4859 psi (335 bar)
Oil Reservoir Capacity and Weight	14.5 gal (55 L) and 77 lb (35 kg)
Stabilizer Span and Weights	
Short Span	11' 2" (3400 mm)
Weight (manual out/hydraulic down)	253 lb (115 kg)
Weight (manual out/hydraulic down swing-up)	265 lb (120 kg)
Standard Span	14' 5" (4400 mm)
Weight (manual out/hydraulic down)	309 lb (140 kg)
Weight (manual out/hydraulic down swing-up)	319 lb (145 kg)
Wide Span	17' 1" (5200 mm)
Weight (manual out/hydraulic down)	352 lb (160 kg)
Weight (manual out/hydraulic down swing-up)	363 lb (165 kg)
Stabilizer Pad	5.5" (140 mm)

MINIMUM CHASSIS SPECIFICATIONS*

Front Axle Rating (GAWF)	6000 lb
Rear Axle Rating (GAWR)	12,460 lb
Minimum Resistance to Bending Moment per Frame Rail	720,000 lb-in

710RCS SPECIFICATIONS

	1 - Hydraulic	2 - Hydraulic	3 - Hydraulic	4 - Hydraulic
Crane Rating**	45,184 ft-lb (6.3 tm)	43,749 ft-lb (6.1 tm)	41,597 ft-lb (5.8 tm)	40,880 ft-lb (5.7 tm)
Max Horizontal Reach	17' (5.2 m)	23' 4" (7.1 m)	29' 6" (9.0 m)	35' 5" (10.8 m)
Max Vertical Reach	23' 3" (7.1 m)	29' 10" (9.1 m)	35' 5" (10.8 m)	41' 8" (12.7 m)
Max Capacity	6746 lb (3060 kg)	6570 lb (2980 kg)	6426 lb (2915 kg)	6316 lb (2865 kg)
Max Cap @ Max Reach	2635 lb (1195 kg)	1808 lb (820 kg)	1323 lb (600 kg)	992 lb (450 kg)
Crane Weight***	1389 lb (630 kg)	1554 lb (705 kg)	1708 lb (775 kg)	1841 lb (835 kg)

*The gross vehicle weight rating (GVWR) is a minimum guideline. Contact IMT if you have questions regarding your particular installation.

**Crane rating (ft-lb) is the rated load (lb) multiplied by the respective distance (ft) from centerline of rotation with all extensions retracted and the inner and outer booms in a horizontal position, per ANSI B30.22.

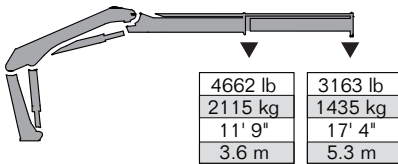
***Crane weight is dry and does not include stabilizers, hydraulic tank and accessories.

810MCS/810RC

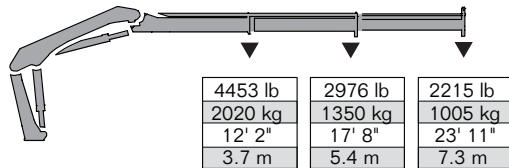
Articulating Crane Technical Specifications

810MCS/810RC LIFTING CAPACITIES

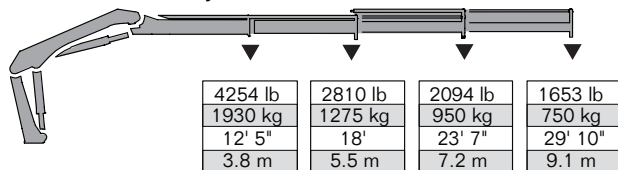
810MCS/810RC - 1 Hydraulic



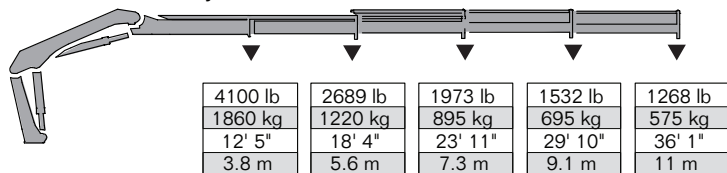
810MCS/810RC - 2 Hydraulic



810MCS/810RC - 3 Hydraulic



810MCS/810RC - 4 Hydraulic



Available as a Manual Control Crane (810MCS) or Wireless Remote Control Crane (810RC)

MINIMUM CHASSIS SPECIFICATIONS*

Front Axle Rating (GAWF)	7000 lb
Rear Axle Rating (GAWR)	12,460 lb
Minimum Resistance to Bending Moment per Frame Rail	810,000 lb-in



Note: Crane appearance subject to change.

SPECIFICATIONS

Crane Storage Height	6' 2" (1840 mm)
Crane Base Width	2' 2" (661 mm)
Rotational Torque	5900 ft-lb (8 kNm)
Rotation	400°
Optimum Pump Performance Fixed	9.2 gpm (35 L/min)
System Pressure	4714 psi (325 bar)
Oil Reservoir Capacity and Weight	14.5 gal (55 L) and 77 lb (35 kg)
Stabilizer Span and Weights	
Short Span	11' 2" (3400 mm)
Weight (manual out/hydraulic down)	253 lb (115 kg)
Weight (manual out/hydraulic down swing-up)	265 lb (120 kg)
Standard Span	14' 5" (4400 mm)
Weight (manual out/hydraulic down)	309 lb (140 kg)
Weight (manual out/hydraulic down swing-up)	319 lb (145 kg)
Wide Span	17' 1" (5200 mm)
Weight (manual out/hydraulic down)	352 lb (160 kg)
Weight (manual out/hydraulic down swing-up)	363 lb (165 kg)
Stabilizer Pad	5.5" (140 mm)

810MCS/810RC SPECIFICATIONS

	1 - Hydraulic	2 - Hydraulic	3 - Hydraulic	4 - Hydraulic
Crane Rating**	54,858 ft-lb (7.6 tm)	54,135 ft-lb (7.5 tm)	52,692 ft-lb (7.3 tm)	51,249 ft-lb (7.1 tm)
Max Horizontal Reach	17' 4" (5.3 m)	23' 11" (7.3 m)	29' 10" (9.1 m)	36' 1" (11 m)
Max Vertical Reach	23' 11" (7.3 m)	30' 6" (9.3 m)	36' 1" (11 m)	42' 4" (12.9 m)
Max Capacity	8245 lb (3740 kg)	8068 lb (3660 kg)	7914 lb (3590 kg)	7804 lb (3540 kg)
Max Cap @ Max Reach	3163 lb (1435 kg)	2215 lb (1005 kg)	1653 lb (750 kg)	1268 lb (575 kg)
Crane Weight***	1466 lb (665 kg)	1631 lb (740 kg)	1785 lb (810 kg)	1918 lb (870 kg)

*The gross vehicle weight rating (GVWR) is a minimum guideline. Contact IMT if you have questions regarding your particular installation.

**Crane rating (ft-lb) is the rated load (lb) multiplied by the respective distance (ft) from centerline of rotation with all extensions retracted and the inner and outer booms in a horizontal position, per ANSI B30.22.

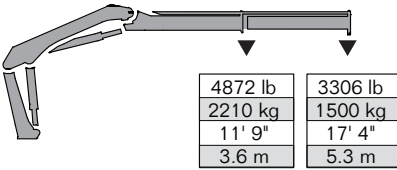
***Crane weight is dry and does not include stabilizers, hydraulic tank and accessories.

910RCS

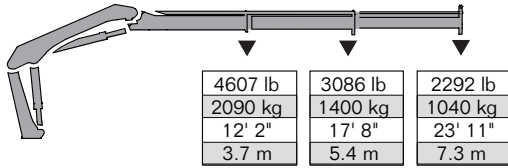
Articulating Crane Technical Specifications

910RCS LIFTING CAPACITIES

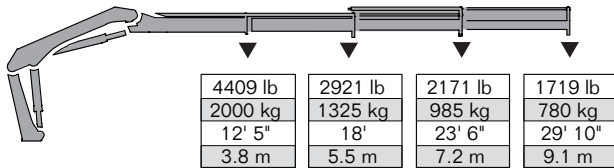
910RCS - 1 Hydraulic



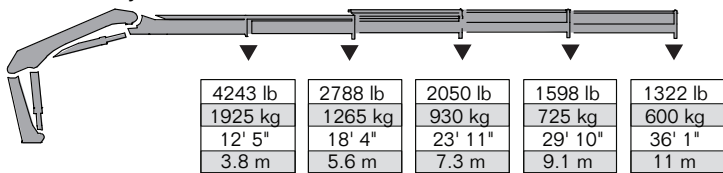
910RCS - 2 Hydraulic



910RCS - 3 Hydraulic



910RCS - 4 Hydraulic



Available as a Wireless Remote Control Crane only.



Note: Crane appearance subject to change.

SPECIFICATIONS

Crane Storage Height	6' 2" (1840 mm)
Crane Base Width	2' 2" (661 mm)
Rotational Torque	5900 ft-lb (8 kNm)
Rotation	400°
Optimum Pump Performance Fixed	13.2 gpm (50 L/min)
System Pressure	4859 psi (335 bar)
Oil Reservoir Capacity and Weight	14.5 gal (55 L) and 77 lb (35 kg)
Stabilizer Span and Weights	
Short Span	11' 2" (3400 mm)
Weight (manual out/hydraulic down)	253 lb (115 kg)
Weight (manual out/hydraulic down swing-up)	265 lb (120 kg)
Standard Span	14' 5" (4400 mm)
Weight (manual out/hydraulic down)	309 lb (140 kg)
Weight (manual out/hydraulic down swing-up)	319 lb (145 kg)
Wide Span	17' 1" (5200 mm)
Weight (manual out/hydraulic down)	352 lb (160 kg)
Weight (manual out/hydraulic down swing-up)	363 lb (165 kg)
Stabilizer Pad	5.5" (140 mm)

MINIMUM CHASSIS SPECIFICATIONS*

Front Axle Rating (GAWF)	7000 lb
Rear Axle Rating (GAWR)	12,460 lb
Minimum Resistance to Bending Moment per Frame Rail	870,000 lb-in

910RCS SPECIFICATIONS

	1 - Hydraulic	2 - Hydraulic	3 - Hydraulic	4 - Hydraulic
Crane Rating**	57,745 ft-lb (8.0 tm)	55,580 ft-lb (7.7 tm)	54,858 ft-lb (7.6 tm)	52,692 ft-lb (7.3 tm)
Max Horizontal Reach	17' 4" (5.3 m)	23' 11" (7.3 m)	29' 10" (9.1 m)	36' 1" (11 m)
Max Vertical Reach	23' 7" (7.2 m)	29' 10" (9.1 m)	36' 1" (11 m)	42' 2" (12.9 m)
Max Capacity	8509 lb (3860 kg)	8333 lb (3780 kg)	8179 lb (3710 kg)	8068 lb (3660 kg)
Max Cap @ Max Reach	3306 lb (1500 kg)	2292 lb (1040 kg)	1719 lb (780 kg)	1322 lb (600 kg)
Crane Weight***	1466 lb (665 kg)	1631 lb (740 kg)	1785 lb (810 kg)	1918 lb (870 kg)

*The gross vehicle weight rating (GVWR) is a minimum guideline. Contact IMT if you have questions regarding your particular installation.

**Crane rating (ft-lb) is the rated load (lb) multiplied by the respective distance (ft) from centerline of rotation with all extensions retracted and the inner and outer booms in a horizontal position, per ANSI B30.22.

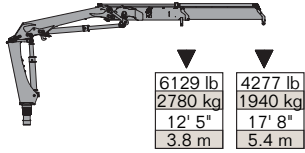
***Crane weight is dry and does not include stabilizers, hydraulic tank and accessories.

10/72SL

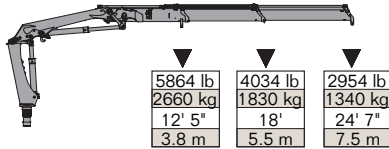
Articulating Crane Technical Specifications

10/72SL LIFTING CAPACITIES

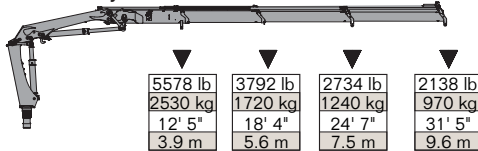
10/72SL - 1 Hydraulic



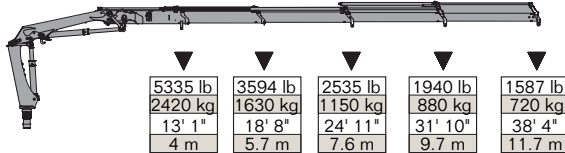
10/72SL - 2 Hydraulic



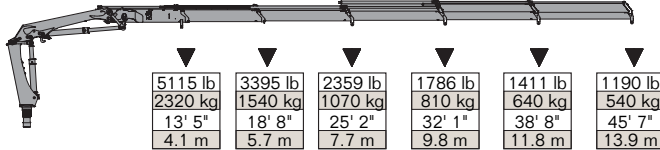
10/72SL - 3 Hydraulic



10/72SL - 4 Hydraulic



10/72SL - 5 Hydraulic



SPECIFICATIONS

Crane Storage Height	7' (2135 mm)
Crane Base Width	2' 5" (747 mm)
Rotational Torque	9662 ft-lb (13.1 kNm)
Rotation	420°
Optimum Pump Performance	
Fixed	15.8 gpm (60 L/min)
Variable	18.5 gpm (70 L/min)
System Pressure	5003 psi (345 bar)
Oil Reservoir Capacity and Weight	14.5 gal (55 L) and 88 lb (40 kg)
Stabilizer Span and Weights	
Standard Span	13' 8" (4165 mm)
Weight (hydraulic out/fixed down)	352 lb (160 kg)
Weight (hydraulic out/gas swing-up)	363 lb (165 kg)
Wide Span	16' 10" (5140 mm)
Weight (hydraulic out/fixed down)	407 lb (185 kg)
Weight (hydraulic out/gas swing-up)	418 lb (190 kg)
Stabilizer Pad	6.4" (162 mm)

Available as a Wireless Remote Control Crane only.

MINIMUM CHASSIS SPECIFICATIONS*

Front Axle Rating (GAWF)	8000 lb
Rear Axle Rating (GAWR)	16,000 lb
Minimum Resistance to Bending Moment per Frame Rail	1,080,000 lb-in

10/72SL SPECIFICATIONS

	1 - Hydraulic	2 - Hydraulic	3 - Hydraulic	4 - Hydraulic	5 - Hydraulic
Crane Rating**	75,791 ft-lb (10.5 tm)	73,625 ft-lb (10.2 tm)	71,460 ft-lb (9.9 tm)	70,016 ft-lb (9.7 tm)	68,572 ft-lb (9.5 tm)
Max Horizontal Reach	18' (5.5 m)	24' 7" (7.5 m)	31' 10" (9.7 m)	38' 8" (11.8 m)	45' 11" (14 m)
Max Vertical Reach	25' 7" (7.8 m)	32' 3" (9.8 m)	39' 4" (12 m)	46' 5" (14.1 m)	53' 4" (16.3 m)
Max Capacity	9722 lb (4410 kg)	8929 lb (4050 kg)	8929 lb (4050 kg)	8400 lb (3810 kg)	7937 lb (3600 kg)
Max Cap @ Max Reach	4277 lb (1940 kg)	2954 lb (1340 kg)	2138 lb (970 kg)	1587 lb (720 kg)	1190 lb (540 kg)
Crane Weight***	2171 lb (985 kg)	2403 lb (1090 kg)	2623 lb (1190 kg)	2821 lb (1280 kg)	2998 lb (1360 kg)

*The gross vehicle weight rating (GVWR) is a minimum guideline. Contact IMT if you have questions regarding your particular installation.

**Crane rating (ft-lb) is the rated load (lb) multiplied by the respective distance (ft) from centerline of rotation with all extensions retracted and the inner and outer booms in a horizontal position, per ANSI B30.22.

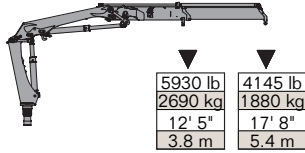
***Crane weight is dry and does not include stabilizers, hydraulic tank and accessories.

10/72DL

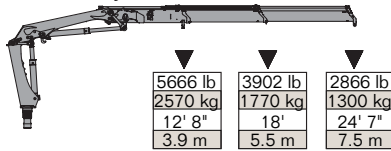
Articulating Crane Technical Specifications

10/72DL LIFTING CAPACITIES

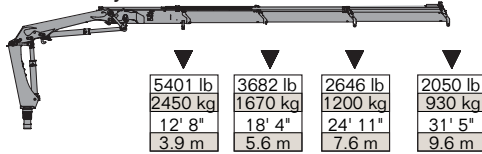
10/72DL - 1 Hydraulic



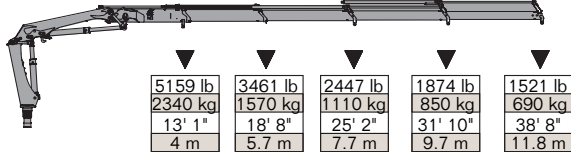
10/72DL - 2 Hydraulic



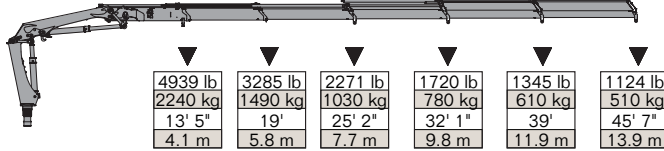
10/72DL - 3 Hydraulic



10/72DL - 4 Hydraulic



10/72DL - 5 Hydraulic



Available as a Wireless Remote Control Crane only.



SPECIFICATIONS

Crane Storage Height	7' (2135 mm)
Crane Base Width	2' 5" (747 mm)
Rotational Torque	9662 ft-lb (13.1 kNm)
Rotation	420°
Optimum Pump Performance	
Fixed	15.8 gpm (60 L/min)
Variable	18.5 gpm (70 L/min)
System Pressure	5003 psi (345 bar)
Oil Reservoir Capacity and Weight	14.5 gal (55 L) and 88 lb (40 kg)
Stabilizer Span and Weights	
Standard Span	13' 8" (4165 mm)
Weight (hydraulic out/fixed down)	352 lb (160 kg)
Weight (hydraulic out/gas swing-up)	363 lb (165 kg)
Wide Span	16' 10" (5140 mm)
Weight (hydraulic out/fixed down)	407 lb (185 kg)
Weight (hydraulic out/gas swing-up)	418 lb (190 kg)
Stabilizer Pad	6.4" (162 mm)

MINIMUM CHASSIS SPECIFICATIONS*

Front Axle Rating (GAWF)	8000 lb
Rear Axle Rating (GAWR)	16,000 lb
Minimum Resistance to Bending Moment per Frame Rail	1,080,000 lb-in

10/72DL SPECIFICATIONS

	1 - Hydraulic	2 - Hydraulic	3 - Hydraulic	4 - Hydraulic	5 - Hydraulic
Crane Rating**	73,625 ft-lb (10.2 tm)	71,460 ft-lb (9.9 tm)	70,016 ft-lb (9.7 tm)	67,851 ft-lb (9.4 tm)	66,407 ft-lb (9.2 tm)
Max Horizontal Reach	18' (5.5 m)	24' 7" (7.5 m)	31' 10" (9.7 m)	38' 8" (11.8 m)	45' 11" (14 m)
Max Vertical Reach	25' 7" (7.8 m)	32' 3" (9.8 m)	39' 4" (12 m)	46' 5" (14.1 m)	53' 4" (16.3 m)
Max Capacity	10,384 lb (4710 kg)	9855 lb (4470 kg)	9370 lb (4250 kg)	8907 lb (4040 kg)	8488 lb (3850 kg)
Max Cap @ Max Reach	4145 lb (1880 kg)	2866 lb (1300 kg)	2050 lb (930 kg)	1521 lb (690 kg)	1124 lb (510 kg)
Crane Weight***	2205 lb (1000 kg)	2436 lb (1105 kg)	2657 lb (1205 kg)	2855 lb (1295 kg)	3031 lb (1375 kg)

*The gross vehicle weight rating (GVWR) is a minimum guideline. Contact IMT if you have questions regarding your particular installation.

**Crane rating (ft-lb) is the rated load (lb) multiplied by the respective distance (ft) from centerline of rotation with all extensions retracted and the inner and outer booms in a horizontal position, per ANSI B30.22.

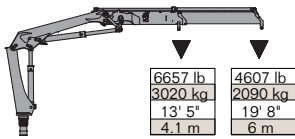
***Crane weight is dry and does not include stabilizers, hydraulic tank and accessories.

12/86SL

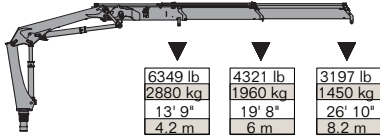
Articulating Crane Technical Specifications

12/86SL LIFTING CAPACITIES

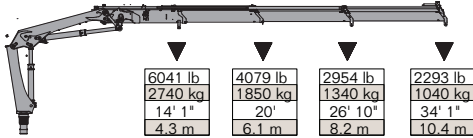
12/86SL - 1 Hydraulic



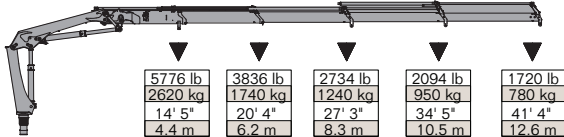
12/86SL - 2 Hydraulic



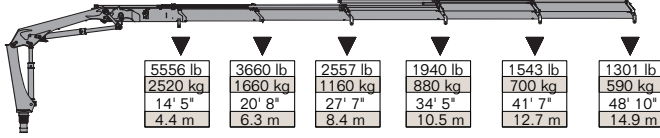
12/86SL - 3 Hydraulic



12/86SL - 4 Hydraulic



12/86SL - 5 Hydraulic



Available as a Wireless Remote Control Crane only.



SPECIFICATIONS

Crane Storage Height	7' (2135 mm)
Crane Base Width	2' 5" (747 mm)
Rotational Torque	9662 ft-lb (13.1 kNm)
Rotation	420°
Optimum Pump Performance	
Fixed	15.8 gpm (60 L/min)
Variable	18.5 gpm (70 L/min)
System Pressure	5003 psi (345 bar)
Oil Reservoir Capacity and Weight	14.5 gal (55 L) and 88 lb (40 kg)
Stabilizer Span and Weights	
Standard Span	15' 2" (4165 mm)
Weight (hydraulic out/fixed down)	375 lb (170 kg)
Weight (hydraulic out/gas swing-up)	386 lb (175 kg)
Wide Span	18' 4" (5590 mm)
Weight (hydraulic out/fixed down)	430 lb (195 kg)
Weight (hydraulic out/gas swing-up)	441 lb (200 kg)
Stabilizer Pad	6.4" (162 mm)

MINIMUM CHASSIS SPECIFICATIONS*

Front Axle Rating (GAWF)	8000 lb
Rear Axle Rating (GAWR)	16,000 lb
Minimum Resistance to Bending Moment per Frame Rail	1,290,000 lb-in

12/86SL SPECIFICATIONS

	1 - Hydraulic	2 - Hydraulic	3 - Hydraulic	4 - Hydraulic	5 - Hydraulic
Crane Rating**	89,505 ft-lb (12.4 tm)	87,340 ft-lb (12.1 tm)	84,452 ft-lb (11.7 tm)	82,387 ft-lb (11.4 tm)	80,843 ft-lb (11.2 tm)
Max Horizontal Reach	20' (6.1 m)	26' 11" (8.2 m)	34' 5" (10.5 m)	41' 7" (12.7 m)	49' 2" (15 m)
Max Vertical Reach	27' 5" (8.3 m)	34' 6" (10.5 m)	41' 10" (12.8 m)	49' 4" (15 m)	56' 9" (17.3 m)
Max Capacity	10,626 lb (4820 kg)	10,384 lb (4710 kg)	9789 lb (4440 kg)	9259 lb (4200 kg)	8774 lb (3980 kg)
Max Cap @ Max Reach	4607 lb (2090 kg)	3197 lb (1450 kg)	2293 lb (1040 kg)	1720 lb (780 kg)	1301 lb (590 kg)
Crane Weight***	2381 lb (1080 kg)	2657 lb (1205 kg)	2899 lb (1315 kg)	3108 lb (1410 kg)	3296 lb (1495 kg)

*The gross vehicle weight rating (GVWR) is a minimum guideline. Contact IMT if you have questions regarding your particular installation.

**Crane rating (ft-lb) is the rated load (lb) multiplied by the respective distance (ft) from centerline of rotation with all extensions retracted and the inner and outer booms in a horizontal position, per ANSI B30.22.

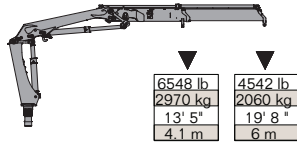
***Crane weight is dry and does not include stabilizers, hydraulic tank and accessories.

12/86DL

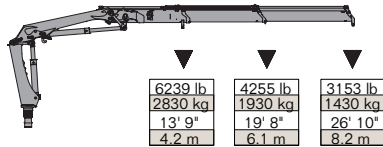
Articulating Crane Technical Specifications

12/86DL LIFTING CAPACITIES

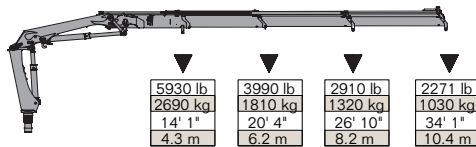
12/86DL - 1 Hydraulic



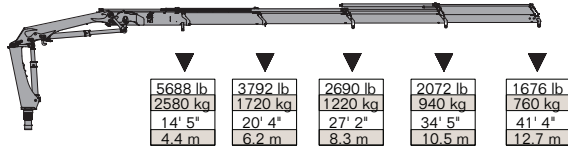
12/86DL - 2 Hydraulic



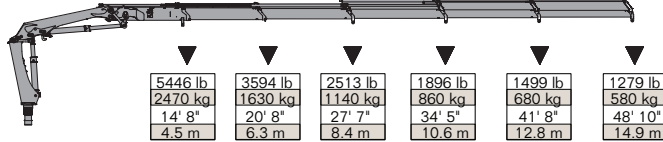
12/86DL - 3 Hydraulic



12/86DL - 4 Hydraulic



12/86DL - 5 Hydraulic



Available as a Wireless Remote Control Crane only.

MINIMUM CHASSIS SPECIFICATIONS*

Front Axle Rating (GAWF)	8000 lb
Rear Axle Rating (GAWR)	16,000 lb
Minimum Resistance to Bending Moment per Frame Rail	1,290,000 lb-in



SPECIFICATIONS

Crane Storage Height	7' (2135 mm)
Crane Base Width	2' 5" (747 mm)
Rotational Torque	9662 ft-lb (13.1 kNm)
Rotation	420°
Optimum Pump Performance	
Fixed	15.8 gpm (60 L/min)
Variable	18.5 gpm (70 L/min)
System Pressure	5003 psi (345 bar)
Oil Reservoir Capacity and Weight	14.5 gal (55 L) and 88 lb (40 kg)
Stabilizer Span and Weights	
Standard Span	15' 2" (4165 mm)
Weight (hydraulic out/fixed down)	375 lb (170 kg)
Weight (hydraulic out/gas swing-up)	386 lb (175 kg)
Wide Span	18' 4" (5590 mm)
Weight (hydraulic out/fixed down)	430 lb (195 kg)
Weight (hydraulic out/gas swing-up)	441 lb (200 kg)
Stabilizer Pad	6.4" (162 mm)

12/86DL SPECIFICATIONS

	1 - Hydraulic	2 - Hydraulic	3 - Hydraulic	4 - Hydraulic	5 - Hydraulic
Crane Rating**	88,953 ft-lb (12.3 tm)	86,060 ft-lb (11.9 tm)	83,891 ft-lb (11.6 tm)	81,721 ft-lb (11.3 tm)	79,552 ft-lb (11 tm)
Max Horizontal Reach	20' (6.1 m)	26' 11" (8.2 m)	34' 5" (10.5 m)	41' 7" (12.7 m)	49' 2" (15 m)
Max Vertical Reach	27' 5" (8.3 m)	34' 6" (10.5 m)	41' 10" (12.8 m)	49' 4" (15 m)	56' 9" (17.3 m)
Max Capacity	10,670 lb (4840 kg)	10,141 lb (4600 kg)	9656 lb (4380 kg)	9171 lb (4160 kg)	8796 lb (3990 kg)
Max Cap @ Max Reach	4542 lb (2060 kg)	3153 lb (1430 kg)	2271 lb (1030 kg)	1676 lb (760 kg)	1279 lb (580 kg)
Crane Weight***	2458 lb (1115 kg)	2734 lb (1240 kg)	2976 lb (1350 kg)	3186 lb (1445 kg)	3373 lb (1530 kg)

*The gross vehicle weight rating (GVWR) is a minimum guideline. Contact IMT if you have questions regarding your particular installation.

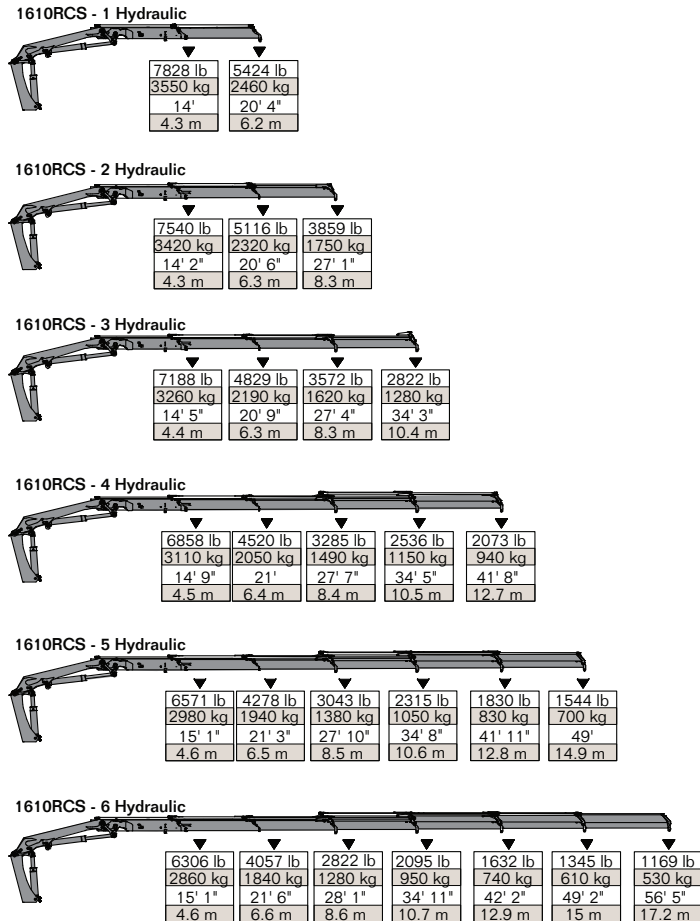
**Crane rating (ft-lb) is the rated load (lb) multiplied by the respective distance (ft) from centerline of rotation with all extensions retracted and the inner and outer booms in a horizontal position, per ANSI B30.22.

***Crane weight is dry and does not include stabilizers, hydraulic tank and accessories.

1610RCS

Articulating Crane Technical Specifications

1610RCS LIFTING CAPACITIES



Available as a Wireless Remote Control Crane only.

MINIMUM CHASSIS SPECIFICATIONS*

Front Axle Rating (GAWF)	12,000 lb
Rear Axle Rating (GAWR)	21,000 lb
Minimum Resistance to Bending Moment per Frame Rail	1,650,000 lb-in



SPECIFICATIONS

Crane Storage Height	7' 4" (2250 mm)
Crane Base Width	2' 8" (830 mm)
Rotational Torque	12,989 ft-lb (17.6 kNm)
Rotation	400°
Optimum Pump Performance	
Fixed	18 gpm (70 L/min)
Variable	26 gpm (100 L/min)
System Pressure	5294 psi (365 bar)
Oil Reservoir Capacity and Weight	24 gal (90 L) and 99 lb (45 kg)
Stabilizer Span and Weights	
Short Span	15' 1" (4615 mm)
Weight (hydraulic out/fixed down)	441 lb (200 kg)
Weight (hydraulic out/gas swing-up)	452 lb (205 kg)
Weight (hydraulic out/hydraulic swing-up)	474 lb (215 kg)
Standard Span	18' 4" (5590 mm)
Weight (hydraulic out/fixed down)	518 lb (235 kg)
Weight (hydraulic out/gas swing-up)	529 lb (240 kg)
Weight (hydraulic out/hydraulic swing-up)	551 lb (250 kg)
Wide Span	21' 2" (6470 mm)
Weight (hydraulic out/fixed down)	662 lb (300 kg)
Weight (hydraulic out/gas swing-up)	662 lb (300 kg)
Weight (hydraulic out/hydraulic swing-up)	695 lb (315 kg)
Stabilizer Pad	6.4" (162 mm)

1610RCS SPECIFICATIONS

	1 - Hydraulic	2 - Hydraulic	3 - Hydraulic	4 - Hydraulic	5 - Hydraulic	6 - Hydraulic
Crane Rating**	110,665 ft-lb (15.3 tm)	107,048 ft-lb (14.8 tm)	103,432 ft-lb (14.3 tm)	100,539 ft-lb (13.9 tm)	98,369 ft-lb (13.6 tm)	95,476 ft-lb (13.2 tm)
Max Horizontal Reach	20' 8" (6.3 m)	27' 5" (8.4 m)	34' 6" (10.5 m)	42' (12.8 m)	49' 3" (15.0 m)	56' 9" (17.3 m)
Max Vertical Reach	28' 7" (8.7 m)	35' 5" (10.8 m)	42' 8" (13 m)	49' 10" (15.2 m)	57' 5" (17.5 m)	64' 11" (19.8 m)
Max Capacity	11,684 lb (5300 kg)	11,244 lb (5100 kg)	11,023 lb (5000 kg)	10,582 lb (4800 kg)	10,141 lb (4600 kg)	9921 lb (4500 kg)
Max Cap @ Max Reach	5424 lb (2460 kg)	3859 lb (1750 kg)	2822 lb (1280 kg)	2073 lb (940 kg)	1544 lb (700 kg)	1169 lb (520 kg)
Crane Weight***	2889 lb (1310 kg)	3197 lb (1450 kg)	3506 lb (1590 kg)	3804 lb (1725 kg)	4068 lb (1845 kg)	4278 lb (1940 kg)

*The gross vehicle weight rating (GVWR) is a minimum guideline. Contact IMT if you have questions regarding your particular installation.

**Crane rating (ft-lb) is the rated load (lb) multiplied by the respective distance (ft) from centerline of rotation with all extensions retracted and the inner and outer booms in a horizontal position, per ANSI B30.22.

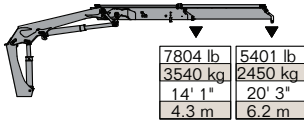
***Crane weight is dry and does not include stabilizers, hydraulic tank and accessories.

1620RCS

Articulating Crane Technical Specifications

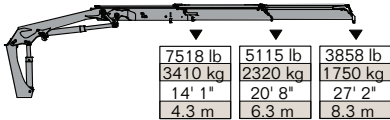
1620RCS LIFTING CAPACITIES

1620RCS - 1 Hydraulic



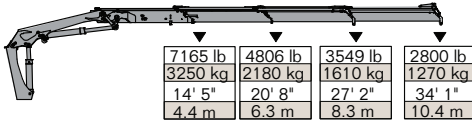
7804 lb	5401 lb
3540 kg	2450 kg
14' 1"	20' 3"
4.3 m	6.2 m

1620RCS - 2 Hydraulic



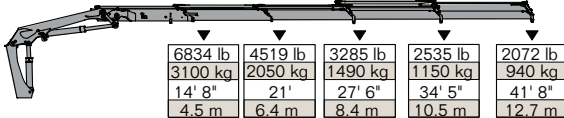
7518 lb	5115 lb	3858 lb
3410 kg	2320 kg	1750 kg
14' 1"	20' 8"	27' 2"
4.3 m	6.3 m	8.3 m

1620RCS - 3 Hydraulic



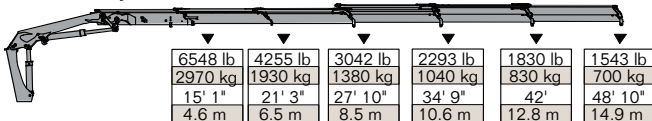
7165 lb	4806 lb	3549 lb	2800 lb
3250 kg	2180 kg	1610 kg	1270 kg
14' 5"	20' 8"	27' 2"	34' 1"
4.4 m	6.3 m	8.3 m	10.4 m

1620RCS - 4 Hydraulic



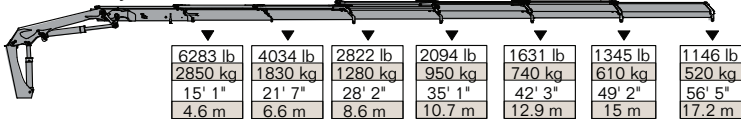
6834 lb	4519 lb	3285 lb	2535 lb	2072 lb
3100 kg	2050 kg	1490 kg	1150 kg	940 kg
14' 8"	21'	27' 6"	34' 5"	41' 8"
4.5 m	6.4 m	8.4 m	10.5 m	12.7 m

1620RCS - 5 Hydraulic



6548 lb	4255 lb	3042 lb	2293 lb	1830 lb	1543 lb
2970 kg	1930 kg	1380 kg	1040 kg	830 kg	700 kg
15' 1"	21' 3"	27' 10"	34' 9"	42'	48' 10"
4.6 m	6.5 m	8.5 m	10.6 m	12.8 m	14.9 m

1620RCS - 6 Hydraulic



6283 lb	4034 lb	2822 lb	2094 lb	1631 lb	1345 lb	1146 lb
2850 kg	1830 kg	1280 kg	950 kg	740 kg	610 kg	520 kg
15' 1"	21' 7"	28' 2"	35' 1"	42' 3"	49' 2"	56' 5"
4.6 m	6.6 m	8.6 m	10.7 m	12.9 m	15 m	17.2 m

Available as a Wireless Remote Control Crane only.

MINIMUM CHASSIS SPECIFICATIONS*

Front Axle Rating (GAWF)	12,000 lb
Rear Axle Rating (GAWR)	21,000 lb
Minimum Resistance to Bending Moment per Frame Rail	1,650,000 lb-in



SPECIFICATIONS

Crane Storage Height	7' 4" (2250 mm)
Crane Base Width	2' 8" (830 mm)
Rotational Torque	12,989 ft-lb (17.6 kNm)
Rotation	400°
Optimum Pump Performance	
Fixed	18 gpm (70 L/min)
Variable	26 gpm (100 L/min)
System Pressure	5294 psi (365 bar)
Oil Reservoir Capacity and Weight	24 gal (90 L) and 99 lb (45 kg)
Stabilizer Span and Weights	
Short Span	15' 1" (4615 mm)
Weight (hydraulic out/fixed down)	441 lb (200 kg)
Weight (hydraulic out/gas swing-up)	452 lb (205 kg)
Weight (hydraulic out/hydraulic swing-up)	474 lb (215 kg)
Standard Span	18' 4" (5590 mm)
Weight (hydraulic out/fixed down)	518 lb (235 kg)
Weight (hydraulic out/gas swing-up)	529 lb (240 kg)
Weight (hydraulic out/hydraulic swing-up)	551 lb (250 kg)
Wide Span	21' 2" (6470 mm)
Weight (hydraulic out/fixed down)	662 lb (300 kg)
Weight (hydraulic out/gas swing-up)	662 lb (300 kg)
Weight (hydraulic out/hydraulic swing-up)	695 lb (315 kg)
Stabilizer Pad	6.4" (162 mm)

1620RCS SPECIFICATIONS

	1 - Hydraulic	2 - Hydraulic	3 - Hydraulic	4 - Hydraulic	5 - Hydraulic	6 - Hydraulic
Crane Rating**	109,942 ft-lb (15.3 tm)	106,325 ft-lb (14.7 tm)	103,432 ft-lb (14.3 tm)	100,539 ft-lb (13.9 tm)	97,646 ft-lb (13.5 tm)	95,476 ft-lb (13.2 tm)
Max Horizontal Reach	20' 8" (6.3 m)	27' 5" (8.4 m)	34' 6" (10.5 m)	42' (12.8 m)	49' 3" (15.0 m)	56' 9" (17.3 m)
Max Vertical Reach	28' 7" (8.7 m)	35' 5" (10.8 m)	42' 8" (13 m)	49' 10" (15.2 m)	57' 5" (17.5 m)	64' 11" (19.8 m)
Max Capacity	12,280 lb (5570 kg)	12,125 lb (5500 kg)	11,596 lb (5260 kg)	11,310 lb (5130 kg)	11,310 lb (5130 kg)	11,310 lb (5130 kg)
Max Cap @ Max Reach	5401 lb (2450 kg)	3858 lb (1750 kg)	2800 lb (1270 kg)	2072 lb (940 kg)	1543 lb (700 kg)	1146 lb (520 kg)
Crane Weight***	2999 lb (1360 kg)	3308 lb (1500 kg)	3616 lb (1640 kg)	3914 lb (1775 kg)	4178 lb (1895 kg)	4388 lb (1990 kg)

*The gross vehicle weight rating (GVWR) is a minimum guideline. Contact IMT if you have questions regarding your particular installation.

**Crane rating (ft-lb) is the rated load (lb) multiplied by the respective distance (ft) from centerline of rotation with all extensions retracted and the inner and outer booms in a horizontal position, per ANSI B30.22.

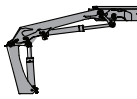
***Crane weight is dry and does not include stabilizers, hydraulic tank and accessories.

1910RCS

Articulating Crane Technical Specifications

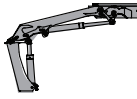
1910RCS LIFTING CAPACITIES

1910RCS - 1 Hydraulic



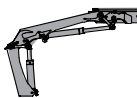
9283 lb 4210 kg	6439 lb 2920 kg
14' 1" 4.3 m	20' 4" 6.2 m

1910RCS - 2 Hydraulic



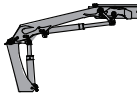
8996 lb 4080 kg	6152 lb 2790 kg	4653 lb 2110 kg
14' 1" 4.3 m	20' 8" 6.3 m	27' 2" 8.3 m

1910RCS - 3 Hydraulic



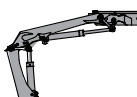
8622 lb 3910 kg	5821 lb 2460 kg	4344 lb 1970 kg	3440 lb 1560 kg
14' 5" 4.4 m	20' 8" 6.3 m	27' 3" 8.3 m	34' 1" 10.4 m

1910RCS - 4 Hydraulic



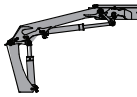
8269 lb 3750 kg	5535 lb 2510 kg	4057 lb 1840 kg	3153 lb 1430 kg	2580 lb 1170 kg
14' 9" 4.5 m	21' 6.4 m	27' 7" 8.4 m	34' 5" 10.5 m	41' 8" 12.7 m

1910RCS - 5 Hydraulic



7690 lb 3610 kg	5270 lb 2390 kg	3815 lb 1730 kg	2911 lb 1320 kg	2337 lb 1060 kg	1985 lb 900 kg
15' 1" 4.6 m	21' 3" 6.5 m	27' 10" 8.5 m	34' 9" 10.6 m	41' 11" 12.8 m	48' 11" 14.9 m

1910RCS - 6 Hydraulic



7651 lb 3470 kg	5027 lb 2280 kg	3594 lb 1630 kg	2712 lb 1230 kg	2139 lb 970 kg	1786 lb 810 kg	1544 lb 700 kg
15' 1" 4.6 m	21' 8" 6.6 m	28' 3" 8.6 m	35' 1" 10.7 m	42' 4" 12.9 m	49' 2" 15 m	56' 5" 17.2 m

Available as a Wireless Remote Control Crane only.

MINIMUM CHASSIS SPECIFICATIONS*

Front Axle Rating (GAWF)	12,000 lb
Rear Axle Rating (GAWR)	21,000 lb
Minimum Resistance to Bending Moment per Frame Rail	1,965,000 lb-in



SPECIFICATIONS

Crane Storage Height	7' 4" (2250 mm)
Crane Base Width	2' 8" (830 mm)
Rotational Torque	12,989 ft-lb (17.6 kNm)
Rotation	400°
Optimum Pump Performance	
Fixed	18 gpm (70 L/min)
Variable	26 gpm (100 L/min)
System Pressure	5294 psi (365 bar)
Oil Reservoir Capacity and Weight	24 gal (90 L) and 99 lb (45 kg)
Stabilizer Span and Weights	
Short Span	15' 1" (4615 mm)
Weight (hydraulic out/fixed down)	441 lb (200 kg)
Weight (hydraulic out/gas swing-up)	452 lb (205 kg)
Weight (hydraulic out/hydraulic swing-up)	474 lb (215 kg)
Standard Span	18' 4" (5590 mm)
Weight (hydraulic out/fixed down)	518 lb (235 kg)
Weight (hydraulic out/gas swing-up)	529 lb (240 kg)
Weight (hydraulic out/hydraulic swing-up)	551 lb (250 kg)
Wide Span	21' 2" (6470 mm)
Weight (hydraulic out/fixed down)	662 lb (300 kg)
Weight (hydraulic out/gas swing-up)	662 lb (300 kg)
Weight (hydraulic out/hydraulic swing-up)	695 lb (315 kg)
Stabilizer Pad	6.4" (162 mm)

1910RCS SPECIFICATIONS

	1 - Hydraulic	2 - Hydraulic	3 - Hydraulic	4 - Hydraulic	5 - Hydraulic	6 - Hydraulic
Crane Rating**	131,641 ft-lb (18.2 tm)	127,301 ft-lb (17.6 tm)	124,408 ft-lb (17.2 tm)	121,514 ft-lb (16.8 tm)	118,621 ft-lb (16.4 tm)	116,451 ft-lb (16.1 tm)
Max Horizontal Reach	20' 8" (6.3 m)	27' 5" (8.4 m)	34' 6" (10.5 m)	42' 0" (12.8 m)	49' 3" (15 m)	56' 9" (17.3 m)
Max Vertical Reach	28' 10" (8.8 m)	35' 5" (10.8 m)	42' 7" (13 m)	49' 10" (15.2 m)	57' 1" (17.4 m)	64' 7" (19.7 m)
Max Capacity	13,448 lb (6100 kg)	13,228 lb (6000 kg)	12,787 lb (5800 kg)	12,125 lb (5500 kg)	12,015 lb (5450 kg)	11,905 lb (5400 kg)
Max Cap @ Max Reach	6439 lb (2920 kg)	4653 lb (2110 kg)	3440 lb (1560 kg)	2580 lb (1170 kg)	1985 lb (900 kg)	1544 lb (700 kg)
Crane Weight***	3021 lb (1370 kg)	3309 lb (1510 kg)	3638 lb (1650 kg)	3936 lb (1785 kg)	4201 lb (1905 kg)	4410 lb (2000 kg)

*The gross vehicle weight rating (GVWR) is a minimum guideline. Contact IMT if you have questions regarding your particular installation.

**Crane rating (ft-lb) is the rated load (lb) multiplied by the respective distance (ft) from centerline of rotation with all extensions retracted and the inner and outer booms in a horizontal position, per ANSI B30.22.

***Crane weight is dry and does not include stabilizers, hydraulic tank and accessories.

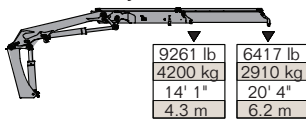
POWERED BY PURPOSE

1920RCS

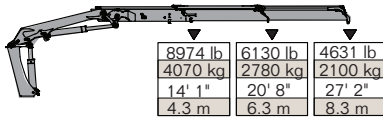
Articulating Crane Technical Specifications

1920RCS LIFTING CAPACITIES

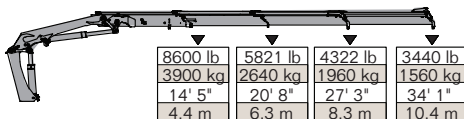
1920RCS - 1 Hydraulic



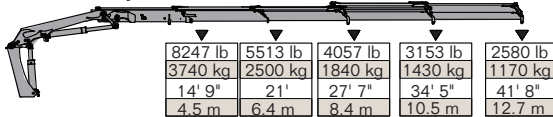
1920RCS - 2 Hydraulic



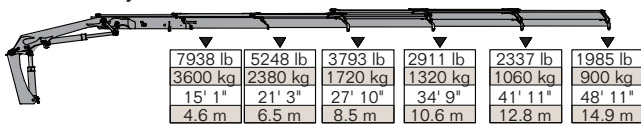
1920RCS - 3 Hydraulic



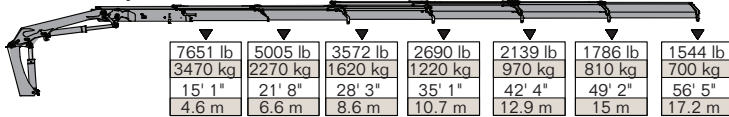
1920RCS - 4 Hydraulic



1920RCS - 5 Hydraulic



1920RCS - 6 Hydraulic



Available as a Wireless Remote Control Crane only.

MINIMUM CHASSIS SPECIFICATIONS*

Front Axle Rating (GAWF)	12,000 lb
Rear Axle Rating (GAWR)	21,000 lb
Minimum Resistance to Bending Moment per Frame Rail	1,965,000 lb-in



SPECIFICATIONS

Crane Storage Height	7' 4" (2250 mm)
Crane Base Width	2' 8" (830 mm)
Rotational Torque	12,989 ft-lb (17.6 kNm)
Rotation	400°
Optimum Pump Performance	
Fixed	18 gpm (70 L/min)
Variable	26 gpm (100 L/min)
System Pressure	5294 psi (365 bar)
Oil Reservoir Capacity and Weight	24 gal (90 L) and 99 lb (45 kg)
Stabilizer Span and Weights	
Short Span	15' 1" (4615 mm)
Weight (hydraulic out/fixed down)	441 lb (200 kg)
Weight (hydraulic out/gas swing-up)	452 lb (205 kg)
Weight (hydraulic out/hydraulic swing-up)	474 lb (215 kg)
Standard Span	18' 4" (5590 mm)
Weight (hydraulic out/fixed down)	518 lb (235 kg)
Weight (hydraulic out/gas swing-up)	529 lb (240 kg)
Weight (hydraulic out/hydraulic swing-up)	551 lb (250 kg)
Wide Span	21' 2" (6470 mm)
Weight (hydraulic out/fixed down)	662 lb (300 kg)
Weight (hydraulic out/gas swing-up)	662 lb (300 kg)
Weight (hydraulic out/hydraulic swing-up)	695 lb (315 kg)
Stabilizer Pad	6.4" (162 mm)

1920RCS SPECIFICATIONS

	1 - Hydraulic	2 - Hydraulic	3 - Hydraulic	4 - Hydraulic	5 - Hydraulic	6 - Hydraulic
Crane Rating**	130,917 ft-lb (18.1 tm)	127,301 ft-lb (17.6 tm)	124,408 ft-lb (17.2 tm)	121,514 ft-lb (16.8 tm)	118,621 ft-lb (16.4 tm)	116,451 ft-lb (16.1 tm)
Max Horizontal Reach	20' 8" (6.3 m)	27' 5" (8.4 m)	34' 6" (10.5 m)	42' 0" (12.8 m)	49' 3" (15 m)	56' 9" (17.3 m)
Max Vertical Reach	28' 10" (8.8 m)	35' 5" (10.8 m)	42' 7" (13 m)	49' 10" (15.2 m)	57' 1" (17.4 m)	64' 7" (19.7 m)
Max Capacity	15,631 lb (7090 kg)	15,234 lb (6910 kg)	14,573 lb (6610 kg)	13,955 lb (6330 kg)	13,382 lb (6070 kg)	12,875 lb (5840 kg)
Max Cap @ Max Reach	6417 lb (2910 kg)	4631 lb (2100 kg)	3440 lb (1560 kg)	2580 lb (1170 kg)	1985 lb (900 kg)	1544 lb (700 kg)
Crane Weight***	3131 lb (1370 kg)	3440 lb (1510 kg)	3749 lb (1650 kg)	4046 lb (1785 kg)	4311 lb (1905 kg)	4520 lb (2000 kg)

*The gross vehicle weight rating (GVWR) is a minimum guideline. Contact IMT if you have questions regarding your particular installation.

**Crane rating (ft-lb) is the rated load (lb) multiplied by the respective distance (ft) from centerline of rotation with all extensions retracted and the inner and outer booms in a horizontal position, per ANSI B30.22.

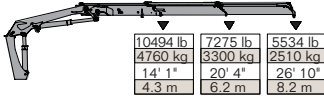
***Crane weight is dry and does not include stabilizers, hydraulic tank and accessories.

2310RCS

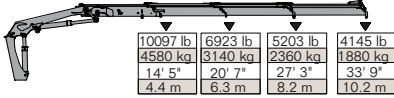
Articulating Crane Technical Specifications

2310RCS LIFTING CAPACITIES

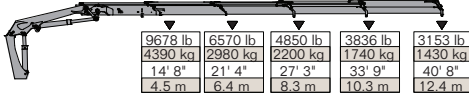
2310RCS - 2 Hydraulic



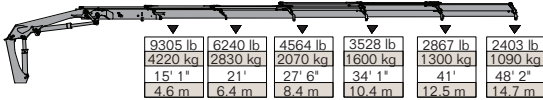
2310RCS - 3 Hydraulic



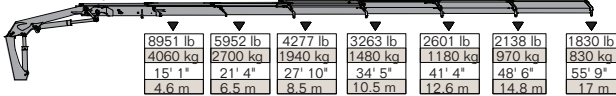
2310RCS - 4 Hydraulic



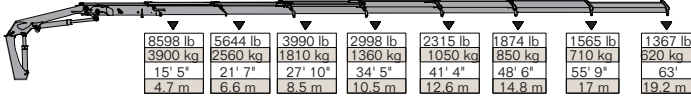
2310RCS - 5 Hydraulic



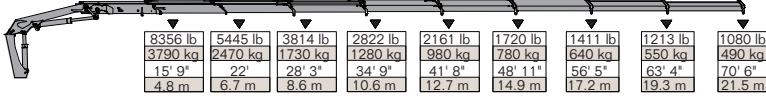
2310RCS - 6 Hydraulic



2310RCS - 7 Hydraulic



2310RCS - 8 Hydraulic



Available as a Wireless Remote Control Crane only.

MINIMUM CHASSIS SPECIFICATIONS*

Front Axle Rating (GAWF)	14,000 lb
Rear Axle Rating (GAWR)	40,000 lb
Minimum Resistance to Bending Moment per Frame Rail	2,235,000 lb-in



SPECIFICATIONS

Crane Storage Height	7' 6" (2295 mm)
Crane Base Width	2' 10" (885 mm)
Rotational Torque	20,000 ft-lb (27.1 kNm)
Rotation	400°
Optimum Pump Performance	
Fixed	18 gpm (70 L/min)
Variable	26 gpm (100 L/min)
System Pressure	5294 psi (365 bar)
Oil Reservoir Capacity and Weight	24 gal (90 L) and 99 lb (45 kg)
Stabilizer Span and Weights	
Short Span	18' 3" (5575 mm)
Weight (hydraulic out/fixed down)	639 lb (290 kg)
Weight (hydraulic out/gas swing-up)	650 lb (295 kg)
Weight (hydraulic out/hydraulic swing-up)	662 lb (300 kg)
Standard Span	21' 2" (6455 mm)
Weight (hydraulic out/fixed down)	805 lb (365 kg)
Weight (hydraulic out/gas swing-up)	881 lb (400 kg)
Weight (hydraulic out/hydraulic swing-up)	904 lb (410 kg)
Wide Span	24' 3" (7400 mm)
Weight (hydraulic out/fixed down)	992 lb (450 kg)
Weight (hydraulic out/gas swing-up)	1058 lb (480 kg)
Weight (hydraulic out/hydraulic swing-up)	1080 lb (490 kg)
Stabilizer Pad	6.4" (162 mm)

2310RCS SPECIFICATIONS

	2 - Hydraulic	3 - Hydraulic	4 - Hydraulic	5 - Hydraulic	6 - Hydraulic	7 - Hydraulic	8 - Hydraulic
Crane Rating**	149,000 ft-lb (20.6 tm)	146,107 ft-lb (20.2 tm)	142,490 ft-lb (19.7 tm)	138,874 ft-lb (19.2 tm)	135,980 ft-lb (18.8 tm)	133,087 ft-lb (18.4 tm)	130,917 ft-lb (18.1 tm)
Max Horizontal Reach	27' 1" (8.3 m)	33' 11" (10.3 m)	41' 0" (12.5 m)	48' 6" (14.8 m)	56' 1" (17.1 m)	63' 4" (19.3 m)	70' 10" (21.6 m)
Max Vertical Reach	35' 5" (10.8 m)	42' 0" (12.8 m)	49' 2" (15 m)	56' 5" (17.2 m)	64' 7" (19.7 m)	71' 10" (21.9 m)	79' 0" (24.1 m)
Max Capacity	16,204 lb (7350 kg)	15,366 lb (6970 kg)	14,550 lb (6600 kg)	13,779 lb (6250 kg)	13,558 lb (6150 kg)	12,853 lb (5830 kg)	12,302 lb (5580 kg)
Max Cap @ Max Reach	5534 lb (2510 kg)	4145 lb (1880 kg)	3153 lb (1430 kg)	2403 lb (1090 kg)	1830 lb (830 kg)	1367 lb (620 kg)	1080 lb (490 kg)
Crane Weight***	3869 lb (1800 kg)	4311 lb (1955 kg)	4653 lb (2110 kg)	4961 lb (2250 kg)	5237 lb (2375 kg)	5468 lb (2480 kg)	5656 lb (2565 kg)

*The gross vehicle weight rating (GVWR) is a minimum guideline. Contact IMT if you have questions regarding your particular installation.

**Crane rating (ft-lb) is the rated load (lb) multiplied by the respective distance (ft) from centerline of rotation with all extensions retracted and the inner and outer booms in a horizontal position, per ANSI B30.22.

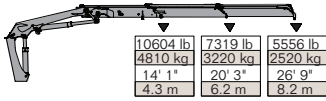
***Crane weight is dry and does not include stabilizers, hydraulic tank and accessories.

2320RCS

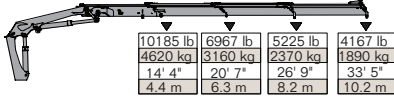
Articulating Crane Technical Specifications

2320RCS LIFTING CAPACITIES

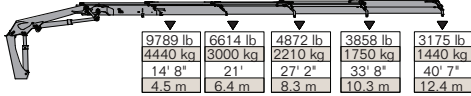
2320RCS - 2 Hydraulic



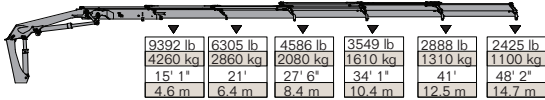
2320RCS - 3 Hydraulic



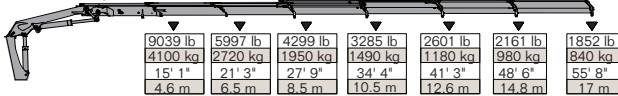
2320RCS - 4 Hydraulic



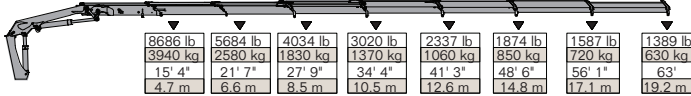
2320RCS - 5 Hydraulic



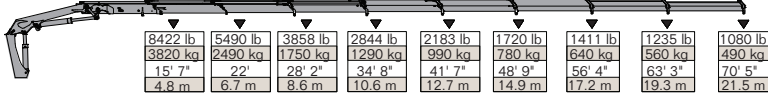
2320RCS - 6 Hydraulic



2320RCS - 7 Hydraulic



2320RCS - 8 Hydraulic



Available as a Wireless Remote Control Crane only.

MINIMUM CHASSIS SPECIFICATIONS*

Front Axle Rating (GAWF)	14,000 lb
Rear Axle Rating (GAWR)	40,000 lb
Minimum Resistance to Bending Moment per Frame Rail	2,235,000 lb-in



SPECIFICATIONS

Crane Storage Height	7' 6" (2295 mm)
Crane Base Width	2' 10" (885 mm)
Rotational Torque	20,000 ft-lb (27.1 kNm)
Rotation	400°
Optimum Pump Performance	
Fixed	18 gpm (70 L/min)
Variable	26 gpm (100 L/min)
System Pressure	5294 psi (365 bar)
Oil Reservoir Capacity and Weight	24 gal (90 L) and 99 lb (45 kg)
Stabilizer Span and Weights	
Short Span	18' 3" (5575 mm)
Weight (hydraulic out/fixed down)	639 lb (290 kg)
Weight (hydraulic out/gas swing-up)	650 lb (295 kg)
Weight (hydraulic out/hydraulic swing-up)	662 lb (300 kg)
Standard Span	21' 2" (6455 mm)
Weight (hydraulic out/fixed down)	805 lb (365 kg)
Weight (hydraulic out/gas swing-up)	881 lb (400 kg)
Weight (hydraulic out/hydraulic swing-up)	904 lb (410 kg)
Wide Span	24' 3" (7400 mm)
Weight (hydraulic out/fixed down)	992 lb (450 kg)
Weight (hydraulic out/gas swing-up)	1058 lb (480 kg)
Weight (hydraulic out/hydraulic swing-up)	1080 lb (490 kg)
Stabilizer Pad	6.4" (162 mm)

2320RCS SPECIFICATIONS

	2 - Hydraulic	3 - Hydraulic	4 - Hydraulic	5 - Hydraulic	6 - Hydraulic	7 - Hydraulic	8 - Hydraulic
Crane Rating**	150,139 ft-lb (20.8 tm)	146,539 ft-lb (20.3 tm)	143,642 ft-lb (19.9 tm)	140,033 ft-lb (19.4 tm)	137,146 ft-lb (19 tm)	134,259 ft-lb (18.6 tm)	132,093 ft-lb (18.3 tm)
Max Horizontal Reach	27' 2" (8.3 m)	33' 8" (10.3 m)	41' 0" (12.5 m)	48' 6" (14.8 m)	56' 1" (17.1 m)	63' 3" (19.3 m)	70' 10" (21.6 m)
Max Vertical Reach	35' 5" (10.8 m)	42' (12.8 m)	49' 2" (15 m)	56' 5" (17.2 m)	64' 7" (19.7 m)	71' 10" (21.9 m)	79' 0" (24.1 m)
Max Capacity	16,270 lb (7380 kg)	15,587 lb (7070 kg)	14,925 lb (6770 kg)	14,300 lb (6500 kg)	13,757 lb (6240 kg)	13,690 lb (6210 kg)	13,690 lb (6210 kg)
Max Cap @ Max Reach	5556 lb (2520 kg)	4167 lb (1890 kg)	3175 lb (1440 kg)	2425 lb (1100 kg)	1852 lb (840 kg)	1389 lb (630 kg)	1080 lb (490 kg)
Crane Weight***	4123 lb (1870 kg)	4464 lb (2025 kg)	4872 lb (2210 kg)	5181 lb (2350 kg)	5456 lb (2475 kg)	5688 lb (2580 kg)	5875 lb (2665 kg)

*The gross vehicle weight rating (GVWR) is a minimum guideline. Contact IMT if you have questions regarding your particular installation.

**Crane rating (ft-lb) is the rated load (lb) multiplied by the respective distance (ft) from centerline of rotation with all extensions retracted and the inner and outer booms in a horizontal position, per ANSI B30.22.

***Crane weight is dry and does not include stabilizers, hydraulic tank and accessories.

2810RCS

Articulating Crane Technical Specifications

2810RCS LIFTING CAPACITIES

2810RCS - 2 Hydraulic

13095 lb 5940 kg 14' 1" 4.3 m	9061 lb 4110 kg 20' 4" 6.2 m	6900 lb 3130 kg 26' 10" 8.2 m
--	---------------------------------------	--

2810RCS - 3 Hydraulic

12610 lb 5720 kg 14' 5" 4.4 m	8664 lb 3930 kg 20' 8" 6.3 m	6526 lb 2960 kg 26' 10" 8.2 m	5225 lb 2370 kg 33' 5" 10.2 m
--	---------------------------------------	--	--

2810RCS - 4 Hydraulic

12125 lb 5500 kg 14' 9" 4.5 m	8267 lb 3750 kg 21' 6.4 m	6151 lb 2790 kg 27' 3" 8.3 m	4850 lb 2200 kg 33' 9" 10.3 m	4012 lb 1820 kg 40' 8" 12.4 m
--	------------------------------------	---------------------------------------	--	--

2810RCS - 5 Hydraulic

11707 lb 5310 kg 15' 1" 4.6 m	7915 lb 3590 kg 21' 6.4 m	5820 lb 2640 kg 27' 6" 8.4 m	4542 lb 2060 kg 34' 1" 10.4 m	3682 lb 1670 kg 41' 12.5 m	3109 lb 1410 kg 48' 2" 14.7 m
--	------------------------------------	---------------------------------------	--	-------------------------------------	--

2810RCS - 6 Hydraulic

11310 lb 5130 kg 15' 1" 4.6 m	7562 lb 3430 kg 21' 4" 6.5 m	5490 lb 2490 kg 27' 10" 8.5 m	4223 lb 1920 kg 34' 5" 10.5 m	3395 lb 1540 kg 41' 4" 12.6 m	2800 lb 1270 kg 48' 6" 14.8 m	2403 lb 1090 kg 55' 9" 17 m
--	---------------------------------------	--	--	--	--	--------------------------------------

2810RCS - 7 Hydraulic

10957 lb 4970 kg 15' 5" 4.7 m	7319 lb 3320 kg 21' 7" 6.6 m	5269 lb 2390 kg 27' 10" 8.5 m	4012 lb 1820 kg 34' 5" 10.5 m	3175 lb 1440 kg 41' 4" 12.6 m	2601 lb 1180 kg 48' 6" 14.8 m	2205 lb 1000 kg 56' 1" 17.1 m	1940 lb 880 kg 63' 19.2 m
--	---------------------------------------	--	--	--	--	--	------------------------------------

2810RCS - 8 Hydraulic

10604 lb 4810 kg 15' 9" 4.8 m	7011 lb 3180 kg 22' 6.7 m	5004 lb 2270 kg 28' 3" 8.6 m	3748 lb 1700 kg 34' 9" 10.6 m	2932 lb 1330 kg 41' 8" 12.7 m	2359 lb 1070 kg 48' 11" 14.9 m	1962 lb 890 kg 56' 5" 17.2 m	1720 lb 780 kg 63' 3" 19.3 m	1521 lb 690 kg 70' 6" 21.5 m
--	------------------------------------	---------------------------------------	--	--	---	---------------------------------------	---------------------------------------	---------------------------------------

Available as a Wireless Remote Control Crane only.

MINIMUM CHASSIS SPECIFICATIONS*

Front Axle Rating (GAWF)	14,000 lb
Rear Axle Rating (GAWR)	40,000 lb
Minimum Resistance to Bending Moment per Frame Rail	2,805,000 lb-in



SPECIFICATIONS

Crane Storage Height	7' 6" (2295 mm)
Crane Base Width	2' 10" (885 mm) – 3' 3" (995 mm)
Rotational Torque	20,000 ft-lb (27.1 kNm)
Rotation	400°
Optimum Pump Performance	
Fixed	18 gpm (70 L/min)
Variable	26 gpm (100 L/min)
System Pressure	5294 psi (365 bar)
Oil Reservoir Capacity and Weight	24 gal (90 L) and 99 lb (45 kg)
Stabilizer Span and Weights	
Short Span	18' 3" (5575 mm)
Weight (hydraulic out/fixed down)	639 lb (290 kg)
Weight (hydraulic out/gas swing-up)	650 lb (295 kg)
Weight (hydraulic out/hydraulic swing-up)	662 lb (300 kg)
Standard Span	21' 1" (6455 mm)
Weight (hydraulic out/fixed down)	805 lb (365 kg)
Weight (hydraulic out/gas swing-up)	882 lb (400 kg)
Weight (hydraulic out/hydraulic swing-up)	904 lb (410 kg)
Wide Span	24' 3" (7400 mm)
Weight (hydraulic out/fixed down)	992 lb (450 kg)
Weight (hydraulic out/gas swing-up)	1058 lb (480 kg)
Weight (hydraulic out/hydraulic swing-up)	1080 lb (490 kg)
Stabilizer Pad	7" (180 mm)

2810RCS SPECIFICATIONS

	2 - Hydraulic	3 - Hydraulic	4 - Hydraulic	5 - Hydraulic	6 - Hydraulic	7 - Hydraulic	8 - Hydraulic
Crane Rating**	185,888 ft-lb (27.5 tm)	182,527 ft-lb (25.2 tm)	177,932 ft-lb (24 tm)	175,039 ft-lb (24.2 tm)	172,145 ft-lb (23.8 tm)	169,252 ft-lb (23.5 tm)	166,359 ft-lb (23 tm)
Max Horizontal Reach	27' 2" (8.3 m)	33' 9" (10.3 m)	41' 0" (12.5 m)	48' 6" (14.8 m)	56' 1" (17.1 m)	63' 4" (19.3 m)	70' 10" (21.6 m)
Max Vertical Reach	35' 5" (10.8 m)	42' 0" (12.8 m)	49' 2" (15 m)	56' 5" (17.2 m)	64' 3" (19.6 m)	71' 10" (21.9 m)	79' 0" (24.1 m)
Max Capacity	20,018 lb (9080 kg)	18,960 lb (8600 kg)	18,012 lb (8170 kg)	17,130 lb (7770 kg)	16,865 lb (7650 kg)	16,131 lb (7320 kg)	15,432 lb (7000 kg)
Max Cap @ Max Reach	6900 lb (3130 kg)	5225 lb (2370 kg)	4012 lb (1840 kg)	3109 lb (1410 kg)	2403 lb (1090 kg)	1940 lb (880 kg)	1521 lb (690 kg)
Crane Weight***	4178 lb (1895 kg)	4553 lb (2065 kg)	4993 lb (2265 kg)	5324 lb (2415 kg)	5633 lb (2555 kg)	5864 lb (2660 kg)	6052 lb (2745 kg)

*The gross vehicle weight rating (GVWR) is a minimum guideline. Contact IMT if you have questions regarding your particular installation.

**Crane rating (ft-lb) is the rated load (lb) multiplied by the respective distance (ft) from centerline of rotation with all extensions retracted and the inner and outer booms in a horizontal position, per ANSI B30.22.

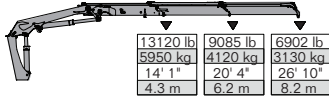
***Crane weight is dry and does not include stabilizers, hydraulic tank and accessories.

2820RCS

Articulating Crane Technical Specifications

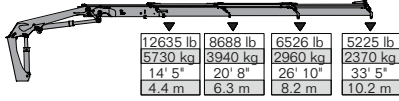
2820RCS LIFTING CAPACITIES

2820RCS - 2 Hydraulic



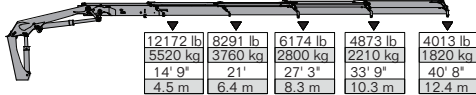
13120 lb 5950 kg 14' 1" 4.3 m	9085 lb 4120 kg 20' 4" 6.2 m	6902 lb 3130 kg 26' 10" 8.2 m
--	---------------------------------------	--

2820RCS - 3 Hydraulic



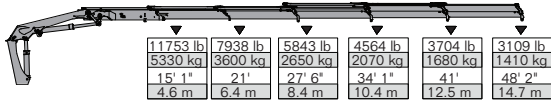
12635 lb 5730 kg 14' 5" 4.4 m	8688 lb 3940 kg 20' 8" 6.3 m	6526 lb 2960 kg 26' 10" 8.2 m	5225 lb 2370 kg 33' 5" 10.2 m
--	---------------------------------------	--	--

2820RCS - 4 Hydraulic



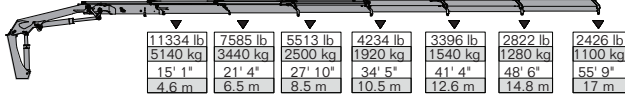
12172 lb 5520 kg 14' 9" 4.5 m	8291 lb 3760 kg 21' 6.4 m	6174 lb 2800 kg 27' 3" 8.3 m	4873 lb 2210 kg 33' 9" 10.3 m	4013 lb 1820 kg 40' 8" 12.4 m
--	------------------------------------	---------------------------------------	--	--

2820RCS - 5 Hydraulic



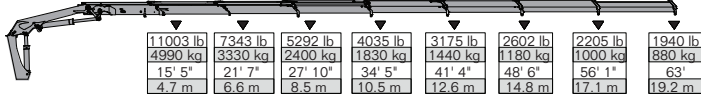
11753 lb 5330 kg 15' 1" 4.6 m	7938 lb 3600 kg 21' 6.4 m	5843 lb 2650 kg 27' 6" 8.4 m	4564 lb 2070 kg 34' 1" 10.4 m	3704 lb 1680 kg 41' 12.5 m	3109 lb 1410 kg 48' 2" 14.7 m
--	------------------------------------	---------------------------------------	--	-------------------------------------	--

2820RCS - 6 Hydraulic



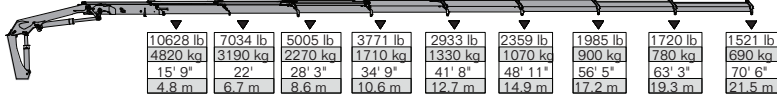
11334 lb 5140 kg 15' 1" 4.6 m	7585 lb 3440 kg 21' 4" 6.5 m	5513 lb 2500 kg 27' 10" 8.5 m	4234 lb 1920 kg 34' 5" 10.5 m	3396 lb 1540 kg 41' 4" 12.6 m	2822 lb 1280 kg 48' 6" 14.8 m	2426 lb 1100 kg 55' 9" 17 m
--	---------------------------------------	--	--	--	--	--------------------------------------

2820RCS - 7 Hydraulic



11003 lb 4990 kg 15' 5" 4.7 m	7343 lb 3330 kg 21' 7" 6.6 m	5292 lb 2400 kg 27' 10" 8.5 m	4035 lb 1830 kg 34' 5" 10.5 m	3175 lb 1440 kg 41' 4" 12.6 m	2602 lb 1180 kg 48' 6" 14.8 m	2205 lb 1000 kg 56' 1" 17.1 m	1940 lb 880 kg 63' 19.2 m
--	---------------------------------------	--	--	--	--	--	------------------------------------

2820RCS - 8 Hydraulic



10628 lb 4820 kg 15' 9" 4.8 m	7034 lb 3190 kg 22' 6.7 m	5005 lb 2270 kg 28' 3" 8.6 m	3771 lb 1710 kg 34' 9" 10.6 m	2933 lb 1330 kg 41' 8" 12.7 m	2359 lb 1070 kg 48' 11" 14.9 m	1985 lb 900 kg 56' 5" 17.2 m	1720 lb 780 kg 63' 3" 19.3 m	1521 lb 690 kg 70' 6" 21.5 m
--	------------------------------------	---------------------------------------	--	--	---	---------------------------------------	---------------------------------------	---------------------------------------

Available as a Wireless Remote Control Crane only.

MINIMUM CHASSIS SPECIFICATIONS*

Front Axle Rating (GAWF)	14,000 lb
Rear Axle Rating (GAWR)	40,000 lb
Minimum Resistance to Bending Moment per Frame Rail	2,805,000 lb-in



SPECIFICATIONS

Crane Storage Height	7' 6" (2295 mm)
Crane Base Width	2' 10" (885 mm) – 3' 3" (995 mm)
Rotational Torque	20,000 ft-lb (27.1 kNm)
Rotation	400°
Optimum Pump Performance	18 gpm (70 L/min) 26 gpm (100 L/min)
System Pressure	5294 psi (365 bar)
Oil Reservoir Capacity and Weight	24 gal (90 L) and 99 lb (45 kg)
Stabilizer Span and Weights	
Short Span	18' 3" (5575 mm)
Weight (hydraulic out/fixed down)	639 lb (290 kg)
Weight (hydraulic out/gas swing-up)	650 lb (295 kg)
Weight (hydraulic out/hydraulic swing-up)	662 lb (300 kg)
Standard Span	21' 1" (6455 mm)
Weight (hydraulic out/fixed down)	805 lb (365 kg)
Weight (hydraulic out/gas swing-up)	882 lb (400 kg)
Weight (hydraulic out/hydraulic swing-up)	904 lb (410 kg)
Wide Span	24' 3" (7400 mm)
Weight (hydraulic out/fixed down)	992 lb (450 kg)
Weight (hydraulic out/gas swing-up)	1058 lb (480 kg)
Weight (hydraulic out/hydraulic swing-up)	1080 lb (490 kg)
Stabilizer Pad	7" (180 mm)

2820RCS SPECIFICATIONS

	2 - Hydraulic	3 - Hydraulic	4 - Hydraulic	5 - Hydraulic	6 - Hydraulic	7 - Hydraulic	8 - Hydraulic
Crane Rating**	186,611 ft-lb (25.8 tm)	182,272 ft-lb (25.2 tm)	178,655 ft-lb (24.7 tm)	175,762 ft-lb (24.3 tm)	172,145 ft-lb (23.8 tm)	169,976 ft-lb (23.5 tm)	166,359 ft-lb (23 tm)
Max Horizontal Reach	27' 2" (8.3 m)	33' 9" (10.3 m)	41' 0" (12.5 m)	48' 6" (14.8 m)	56' 1" (17.1 m)	63' 4" (19.3 m)	70' 10" (21.6 m)
Max Vertical Reach	35' 5" (10.8 m)	42' 0" (12.8 m)	49' 2" (15 m)	56' 5" (17.2 m)	64' 3" (19.6 m)	71' 10" (21.9 m)	79' 0" (24.1 m)
Max Capacity	20,260 lb (9190 kg)	19,444 lb (8820 kg)	18,651 lb (8460 kg)	17,945 lb (8140 kg)	17,262 lb (7830 kg)	16,644 lb (7550 kg)	16,049 lb (7280 kg)
Max Cap @ Max Reach	6902 lb (3130 kg)	5226 lb (2370 kg)	4013 lb (1820 kg)	3109 lb (1410 kg)	2426 lb (1100 kg)	1940 lb (880 kg)	1521 lb (690 kg)
Crane Weight***	4366 lb (1980 kg)	4741 lb (2150 kg)	5182 lb (2350 kg)	5513 lb (2500 kg)	5821 lb (2640 kg)	6053 lb (2745 kg)	6240 lb (2830 kg)

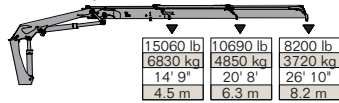
*The gross vehicle weight rating (GVWR) is a minimum guideline. Contact IMT if you have questions regarding your particular installation.

**Crane rating (ft-lb) is the rated load (lb) multiplied by the respective distance (ft) from centerline of rotation with all extensions retracted and the inner and outer booms in a horizontal position, per ANSI B30.22.

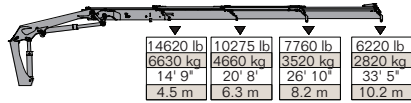
***Crane weight is dry and does not include stabilizers, hydraulic tank and accessories.

32/222 LIFTING CAPACITIES

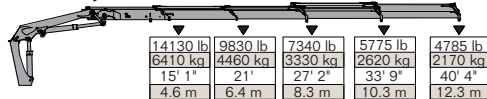
32/222 - 2 Hydraulic



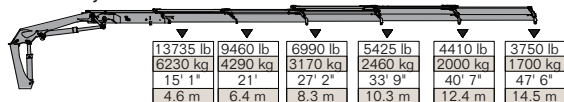
32/222 - 3 Hydraulic



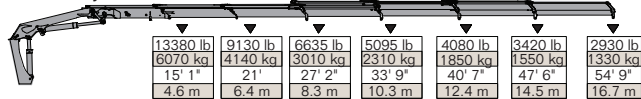
32/222 - 4 Hydraulic



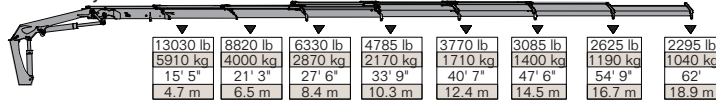
32/222 - 5 Hydraulic



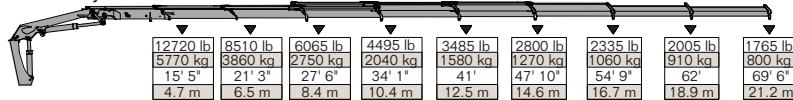
32/222 - 6 Hydraulic



32/222 - 7 Hydraulic



32/222 - 8 Hydraulic



SPECIFICATIONS

Crane Storage Height	7' 9" (2350 mm)
Crane Base Width	3' 4" to 3' 9" (1024 mm to 1130 mm)
Rotational Torque	28,078 ft-lb (38 kNm)
Rotation	Continuous
Optimum Pump Performance	
Fixed	21.1 gpm (80 L/min)
Variable	29 gpm (110 L/min)
System Pressure	5294 psi (365 bar)
Oil Reservoir Capacity and Weight	42.3 gal (160 L) and 165 lb (75 kg)
Stabilizer Span and Weights	
Standard Span	21' 1" (6430 mm)
Stabilizer beams with fixed legs weight	1013 lb (460 kg)
Stabilizer beams with 20° swing-up weight	1013 lb (460 kg)
Stabilizer beams with 180° hydraulic swing up legs weight	1035 lb (470 kg)
Stabilizer Pad	7" (180 mm)

Available as a Wireless Remote Control Crane only.

MINIMUM CHASSIS SPECIFICATIONS*

Front Axle Rating (GAWF)	16,000 lb
Rear Axle Rating (GAWR)	40,000 lb
Minimum Resistance to Bending Moment per Frame Rail	3,300,000 lb-in

32/222 SPECIFICATIONS

	2 - Hydraulic	3 - Hydraulic	4 - Hydraulic	5 - Hydraulic	6 - Hydraulic	7 - Hydraulic	8 - Hydraulic
Crane Rating**	221,599 ft-lb (30.7 tm)	215,102 ft-lb (29.8 tm)	212,937 ft-lb (29.5 tm)	207,162 ft-lb (28.7 tm)	201,388 ft-lb (27.9 tm)	200,666 ft-lb (27.8 tm)	195,613 ft-lb (27.1 tm)
Max Horizontal Reach	27' 2" (8.3 m)	33' 9" (10.3 m)	40' 8" (12.4 m)	47' 10" (14.6 m)	55' 1" (16.8 m)	62' 4" (19 m)	69' 10" (21.3 m)
Max Vertical Reach	35' 1" (10.7 m)	42' (12.8 m)	48' 10" (14.9 m)	55' 9" (17.0 m)	63' (19.2 m)	70' 6" (21.5 m)	78' 1" (23.8 m)
Max Capacity	15,058 lb (6830 kg)	14,617 lb (6630 kg)	14,132 lb (6410 kg)	13,735 lb (6230 kg)	13,382 lb (6070 kg)	13,029 lb (5910 kg)	12,721 lb (5770 kg)
Max Cap @ Max Reach	8200 lb (3720 kg)	6220 lb (2820 kg)	4785 lb (2170 kg)	3750 lb (1700 kg)	2930 lb (1330 kg)	2295 lb (1040 kg)	1765 lb (800 kg)
Crane Weight***	5710 lb (2590 kg)	6151 lb (2790 kg)	6592 lb (2990 kg)	6967 lb (3160 kg)	7319 lb (3320 kg)	7650 lb (3470 kg)	7926 lb (3595 kg)

*The gross vehicle weight rating (GVWR) is a minimum guideline. Contact IMT if you have questions regarding your particular installation.

**Crane rating (ft-lb) is the rated load (lb) multiplied by the respective distance (ft) from centerline of rotation with all extensions retracted and the inner and outer booms in a horizontal position, per ANSI B30.22.

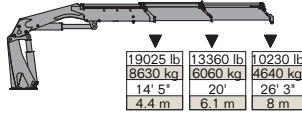
***Crane weight is dry and does not include stabilizers, hydraulic tank and accessories.

40/275

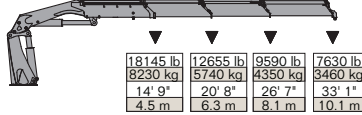
Articulating Crane Technical Specifications

40/275 LIFTING CAPACITIES

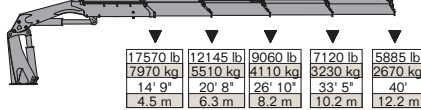
40/275 - 2 Hydraulic



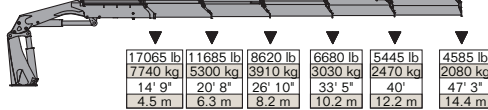
40/275 - 3 Hydraulic



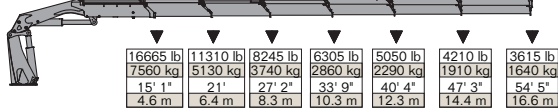
40/275 - 4 Hydraulic



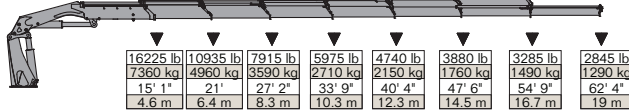
40/275 - 5 Hydraulic



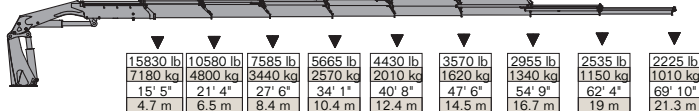
40/275 - 6 Hydraulic



40/275 - 7 Hydraulic



40/275 - 8 Hydraulic



Available as a Wireless Remote Control Crane only.

MINIMUM CHASSIS SPECIFICATIONS*

Front Axle Rating (GAWF)	16,000 lb
Rear Axle Rating (GAWR)	40,000 lb
Minimum Resistance to Bending Moment per Frame Rail	4,125,000 lb-in



SPECIFICATIONS

Crane Storage Height	7' 10" (2384 mm)
Crane Base Width	3' 9" to 4' 2" (1148 to 1274 mm)
Rotational Torque	29,500 ft-lb (40 kNm)
Rotation	Continuous
Optimum Pump Performance	
Fixed	21.1 gpm (80 L/min)
Variable	29 gpm (110 L/min)
System Pressure	5294 psi (365 bar)
Oil Reservoir Capacity and Weight	66 gal (250 L) and 205 lb (93 kg)
Stabilizer Span and Weights	
Standard Span	25' 6" (7800 mm)
Stabilizer beams with fixed legs weight	1564 lb (710 kg)
Stabilizer beams with 20° swing-up weight	1564 lb (710 kg)
Stabilizer beams with 180° hydraulic swing up legs weight	1595 lb (724 kg)
Stabilizer Pad	7.9" - 8.3" (200 -210 mm)

40/275 SPECIFICATIONS

	2 - Hydraulic	3 - Hydraulic	4 - Hydraulic	5 - Hydraulic	6 - Hydraulic	7 - Hydraulic	8 - Hydraulic
Crane Rating**	274,291 ft-lb (38 tm)	267,073 ft-lb (37 tm)	259,133 ft-lb (35.9 tm)	251,915 ft-lb (34.9 tm)	250,471 ft-lb (34.7 tm)	244,696 ft-lb (33.9 tm)	243,253 ft-lb (33.7 tm)
Max Horizontal Reach	26' 6" (8.1 m)	33' 1" (10.1 m)	40' (12.2 m)	47' 1" (14.35 m)	54' 5" (16.6 m)	62' 2" (18.95 m)	69' 11" (21.3 m)
Max Vertical Reach	35' 5" (10.8 m)	42' 4" (12.9 m)	49' 3" (15 m)	56' 1" (17.1 m)	63' 4" (19.3 m)	71' 2" (21.7 m)	79' (24.1 m)
Max Capacity	19,025 lb (8630 kg)	18,145 lb (8230 kg)	17,570 lb (7970 kg)	17,065 lb (7740 kg)	16,665 lb (7560 kg)	16,225 lb (7360 kg)	15,830 lb (7180 kg)
Max Cap @ Max Reach	10,230 lb (4640 kg)	7630 lb (3460 kg)	5885 lb (2670 kg)	4585 lb (2080 kg)	3615 lb (1640 kg)	2845 lb (1290 kg)	2225 lb (1010 kg)
Crane Weight***	6945 lb (3150 kg)	7518 lb (3410 kg)	8069 lb (3660 kg)	8598 lb (3900 kg)	8995 lb (4080 kg)	9348 lb (4240 kg)	9700 lb (4400 kg)

*The gross vehicle weight rating (GVWR) is a minimum guideline. Contact IMT if you have questions regarding your particular installation.

**Crane rating (ft-lb) is the rated load (lb) multiplied by the respective distance (ft) from centerline of rotation with all extensions retracted and the inner and outer booms in a horizontal position, per ANSI B30.22.

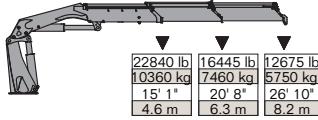
***Crane weight is dry and does not include stabilizers, hydraulic tank and accessories.

50/345

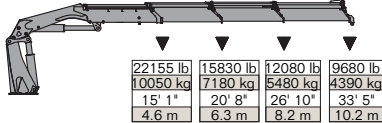
Articulating Crane Technical Specifications

50/345 LIFTING CAPACITIES

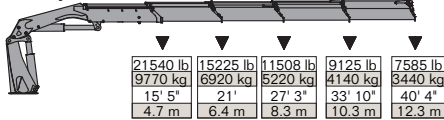
50/345 - 2 Hydraulic



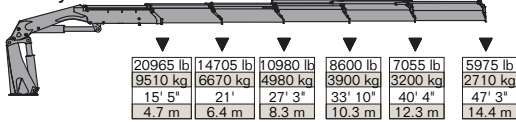
50/345 - 3 Hydraulic



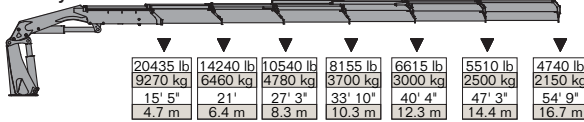
50/345 - 4 Hydraulic



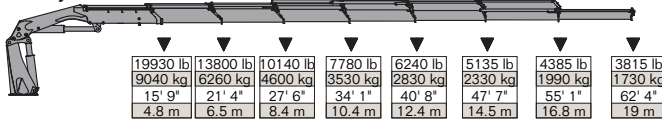
50/345 - 5 Hydraulic



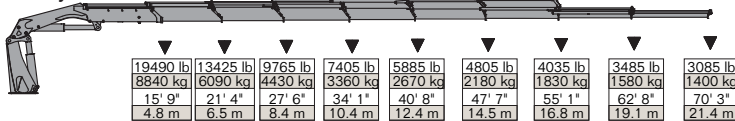
50/345 - 6 Hydraulic



50/345 - 7 Hydraulic



50/345 - 8 Hydraulic



SPECIFICATIONS

Crane Storage Height	7' 10" to 8' (2398 mm to 2438 mm)
Crane Base Width	3' 11" to 4' 3" (1198 to 1298 mm)
Rotational Torque	36,875 ft-lb (50 kNm)
Rotation	Continuous
Optimum Pump Performance	
Fixed	21 gpm (80 L/min)
Variable	29 gpm (110 L/min)
System Pressure	5294 psi (365 bar)
Oil Reservoir Capacity and Weight	66 gal (250 L) and 205 lb (93 kg)
Stabilizer Span and Weights	
Standard Span	25' 6" (7800 mm)
Stabilizer beams with fixed legs weight	1652 lb (750 kg)
Stabilizer beams with 20° swing-up weight	1652 lb (750 kg)
Stabilizer beams with 180° hydraulic swing up legs weight	1683 lb (764 kg)
Stabilizer Pad	7.9" - 8.3" (200 -210 mm)

MINIMUM CHASSIS SPECIFICATIONS*

Front Axle Rating (GAWF)	20,000 lb
Rear Axle Rating (GAWR)	40,000 lb
Minimum Resistance to Bending Moment per Frame Rail	5,175,000 lb-in

Available as a Wireless Remote Control Crane only.

50/345 SPECIFICATIONS

	2 - Hydraulic	3 - Hydraulic	4 - Hydraulic	5 - Hydraulic	6 - Hydraulic	7 - Hydraulic	8 - Hydraulic
Crane Rating**	345,015 ft-lb (47.7 tm)	334,165 ft-lb (46.2 tm)	331,995 ft-lb (45.9 tm)	323,315 ft-lb (44.7 tm)	315,360 ft-lb (43.6 tm)	313,910 ft-lb (43.4 tm)	306,680 ft-lb (42.4 tm)
Max Horizontal Reach	27' 1" (8.25 m)	33' 7" (10.25 m)	41' (12.5 m)	47' 6" (14.5 m)	55' (16.75 m)	62' 7" (19.1 m)	70' 4" (21.45 m)
Max Vertical Reach	35' 5" (10.8 m)	42' 4" (12.9 m)	49' 3" (15 m)	56' 1" (17.1 m)	63' 4" (19.3 m)	71' 2" (21.7 m)	79' (24.1 m)
Max Capacity	22,840 lb (10360 kg)	22,155 lb (10050 kg)	21,540 lb (9770 kg)	20,965 lb (9510 kg)	20,435 lb (9270 kg)	19,930 lb (9040 kg)	19,490 lb (8840 kg)
Max Cap @ Max Reach	12,675 lb (5750 kg)	9680 lb (4390 kg)	7585 lb (3440 kg)	5975 lb (2710 kg)	4740 lb (2150 kg)	3815 lb (1730 kg)	3085 lb (1400 kg)
Crane Weight***	7960 lb (3610 kg)	8600 lb (3900 kg)	9195 lb (4170 kg)	9745 lb (4420 kg)	10,185 lb (4620 kg)	10,585 lb (4800 kg)	10,970 lb (4975 kg)

*The gross vehicle weight rating (GVWR) is a minimum guideline. Contact IMT if you have questions regarding your particular installation.

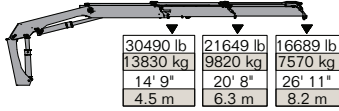
**Crane rating (ft-lb) is the rated load (lb) multiplied by the respective distance (ft) from centerline of rotation with all extensions retracted and the inner and outer booms in a horizontal position, per ANSI B30.22.

***Crane weight is dry and does not include stabilizers, hydraulic tank and accessories.

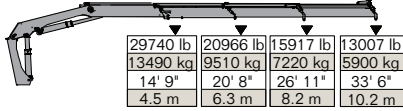
POWERED BY PURPOSE

7020 LIFTING CAPACITIES

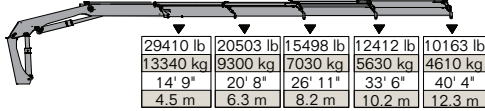
7020 - OK2 Hydraulic



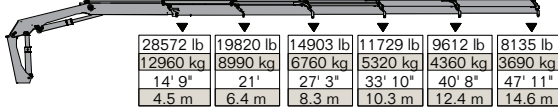
7020 - OK3 Hydraulic



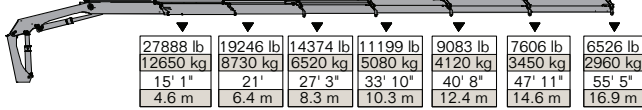
7020 - OK4 Hydraulic



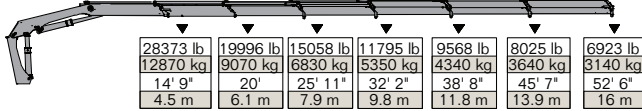
7020 - OK5 Hydraulic



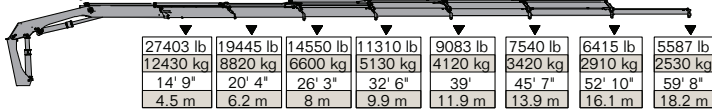
7020 - OK6 Hydraulic



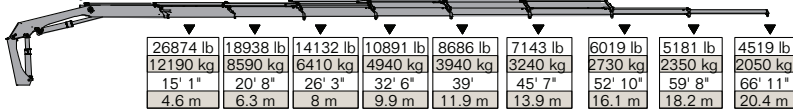
7020 - 6 Hydraulic



7020 - 7 Hydraulic



7020 - 8 Hydraulic



Available as a Wireless Remote Control Crane only.



SPECIFICATIONS

Crane Storage Height	8' 1" (2470 mm) – 8' 2" (2480 mm)
Crane Base Width	4' 5" to 5' 1" (1340 to 1550 mm)
Rotational Torque	51,630 ft-lb (70 kNm)
Rotation	Continuous
Optimum Pump Performance	
Fixed	23.7 gpm (90 L/min)
Variable	32 gpm (120 L/min)
System Pressure	5440 psi (375 bar)
Oil Reservoir Capacity and Weight	66 gal (250 L) and 205 (93 kg)
Stabilizer Span and Weights	
Standard Span	27' 7" (8420 mm)
Stabilizer beams with fixed legs weight	2039 lb (925 kg)
Stabilizer beams with 20° swing-up legs weight	2039 lb (925 kg)
Stabilizer beams with 180° hydraulic swing-up legs weight	2061 lb (935 kg)
Stabilizer Pad	8.3" (210 mm)

MINIMUM CHASSIS SPECIFICATIONS*

Front Axle Rating (GAWF)	20,000 lb
Rear Axle Rating (GAWR)	40,000 lb
Minimum Resistance to Bending Moment per Frame Rail	6,735,000 lb-in

7020 SPECIFICATIONS

	OK2- Hydraulic	OK3- Hydraulic	OK4- Hydraulic	OK5- Hydraulic	OK6- Hydraulic	6 - Hydraulic	7 - Hydraulic	8 - Hydraulic
Crane Rating**	448,972 ft-lb (62.2 tm)	438,145 ft-lb (60.7 tm)	433,092 ft-lb (60 tm)	420,821 ft-lb (58.3 tm)	420,099 ft-lb (58.2 tm)	417,934 ft-lb (57.9 tm)	412,881 ft-lb (57.2 tm)	404,941 ft-lb (56.1 tm)
Max Horizontal Reach	27' 2" (8.3 m)	34' 1" (10.4 m)	40' 8" (12.4 m)	48' 2" (14.7 m)	55' 9" (17 m)	52' 9" (16.1 m)	60' 0" (18.3 m)	67' 7" (20.6 m)
Max Vertical Reach	36' 5" (11.1 m)	43' (13.1 m)	49' 6" (15.1 m)	57' 1" (17.4 m)	64' 3" (19.6 m)	62' (18.9 m)	68' 11" (21 m)	76' 5" (23.3 m)
Max Capacity	30,490 lb (13830 kg)	29,740 lb (13490 kg)	29,410 lb (13340 kg)	28,572 lb (12960 kg)	27,888 lb (12650 kg)	28,373 lb (12870 kg)	27,403 lb (12430 kg)	26,874 lb (12190 kg)
Max Cap @ Max Reach	16,645 lb (7570 kg)	13,005 lb (5900 kg)	10,165 lb (4610 kg)	8135 lb (3690 kg)	6525 lb (2960 kg)	6920 lb (3140 kg)	5600 lb (2530 kg)	4520 lb (2050 kg)
Crane Weight***	9845 lb (4465 kg)	10,505 lb (4765 kg)	11,165 lb (5065 kg)	11,760 lb (5335 kg)	12,290 lb (5575 kg)	12,600 lb (5715 kg)	13,040 lb (5915 kg)	13,480 lb (6115 kg)

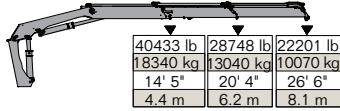
*The gross vehicle weight rating (GVWR) is a minimum guideline. Contact IMT if you have questions regarding your particular installation.

**Crane rating (ft-lb) is the rated load (lb) multiplied by the respective distance (ft) from centerline of rotation with all extensions retracted and the inner and outer booms in a horizontal position, per ANSI B30.22.

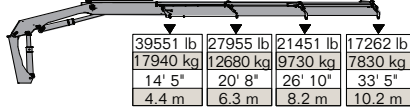
***Crane weight is dry and does not include stabilizers, hydraulic tank and accessories.

9520 LIFTING CAPACITIES

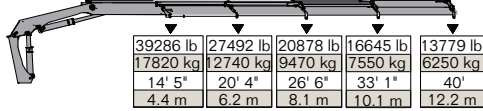
9520 - OK2 Hydraulic



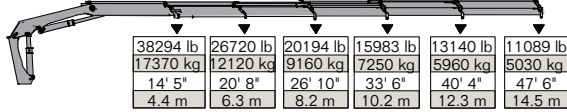
9520 - OK3 Hydraulic



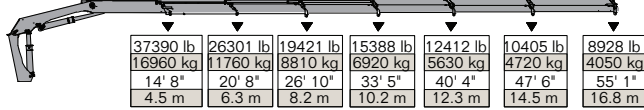
9520 - OK4 Hydraulic



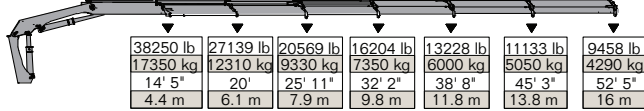
9520 - OK5 Hydraulic



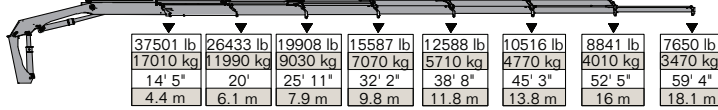
9520 - OK6 Hydraulic



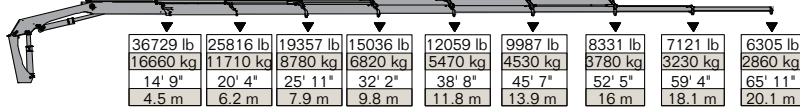
9520 - 6 Hydraulic



9520 - 7 Hydraulic



9520 - 8 Hydraulic



Available as a Wireless Remote Control Crane only.



SPECIFICATIONS

Crane Storage Height	8' 2" (2495 mm)
Crane Base Width	4' 9" to 5' 4" (1440 to 1620 mm)
Rotational Torque	59,005 ft-lb (80 kNm)
Rotation	Continuous
Optimum Pump Performance	
Fixed	23.7 gpm (90 L/min)
Variable	32 gpm (120 L/min)
System Pressure	5294 psi (365 bar)
Oil Reservoir Capacity and Weight	84.5 gal (320 L) and 231 (105 kg)
Stabilizer Span and Weights	
Standard Span	27' 7" (8420 mm)
Stabilizer beams with fixed legs weight	2260 lb (1025 kg)
Stabilizer beams with 20° swing-up legs weight	2260 lb (1025 kg)
Stabilizer beams with 180° hydraulic swing-up legs weight	2282 lb (1035 kg)
Stabilizer Pad	8.3" (210 mm)

MINIMUM CHASSIS SPECIFICATIONS*

Front Axle Rating (GAWF)	20,000 lb
Rear Axle Rating (GAWR)	46,000 lb
Minimum Resistance to Bending Moment per Frame Rail	8,670,000 lb-in

9520 SPECIFICATIONS

	OK2- Hydraulic	OK3- Hydraulic	OK4- Hydraulic	OK5- Hydraulic	OK6- Hydraulic	6 - Hydraulic	7 - Hydraulic	8 - Hydraulic
Crane Rating**	578,177 ft-lb (80.1 tm)	570,959 ft-lb (79.1 tm)	562,297 ft-lb (77.9 tm)	556,523 ft-lb (77.1 tm)	548,583 ft-lb (76 tm)	550,749 ft-lb (76.3 tm)	539,921 ft-lb (75.1 tm)	541,365 ft-lb (75 tm)
Max Horizontal Reach	27' 2" (8.3 m)	33' 11" (10.3 m)	40' 8" (12.4 m)	48' (14.64 m)	55' 7" (16.94 m)	52' 9" (16.1 m)	60' (18.3 m)	66' 7" (20.3 m)
Max Vertical Reach	36' 5" (11.1 m)	43' (13.1 m)	49' 10" (15.2 m)	57' 1" (17.4 m)	64' 4" (19.6 m)	62' (18.9 m)	68' 10" (21 m)	75' 9" (23.1 m)
Max Capacity	40430 lb (18340 kg)	39,550 lb (17940 kg)	39,285 lb (17820 kg)	38,290 lb (17370 kg)	37,390 lb (16960 kg)	38,250 lb (17350 kg)	37,500 lb (17010 kg)	36,725 lb (16660 kg)
Max Cap @ Max Reach	22,200 lb (10070 kg)	17,260 lb (7830 kg)	13,775 lb (6250 kg)	11,085 lb (5030 kg)	8925 lb (4050 kg)	9455 lb (4290 kg)	7650 lb (3470 kg)	6305 lb (2860 kg)
Crane Weight***	12,500 lb (5670 kg)	13,270 lb (6020 kg)	14,020 lb (6360 kg)	14,695 lb (6665 kg)	15,280 lb (6930 kg)	15,585 lb (7070 kg)	16,160 lb (7330 kg)	16,625 lb (7540 kg)

*The gross vehicle weight rating (GVWR) is a minimum guideline. Contact IMT if you have questions regarding your particular installation.

**Crane rating (ft-lb) is the rated load (lb) multiplied by the respective distance (ft) from centerline of rotation with all extensions retracted and the inner and outer booms in a horizontal position, per ANSI B30.22.

***Crane weight is dry and does not include stabilizers, hydraulic tank and accessories.

CRANE ACCESSORIES

GRAPPLES AND BUCKETS

Many different grapples and buckets can be mounted on IMT articulating cranes. These accessories make handling a variety of materials, from organic waste to rocks to building materials, much easier.

Note: Contact IMT for specific options for a particular crane or application, as not all accessories can be used on all cranes.



Clamshell Bucket



Barrier Lifter



Refuse Lifter



Logging Grapple



Multi-Purpose Grapple



Rock Grapple



Railroad Grapple



Orange-Peel Grapple



Pole Manipulator

CRANE ACCESSORIES

OPERATION ACCESSORIES

A number of options and accessories can be purchased with the crane, or as aftermarket items, to meet the specific requirements of your task.

Note: Contact IMT for specific options for a particular crane or application, as not all accessories can be used on all cranes.

RADIO REMOTE CONTROLS



STABILIZER AND STABILIZER ACCESSORIES



Standard Stabilizer Foot



Optional Stabilizer Foot



Stabilizer Pads

SAFETY OPTIONS



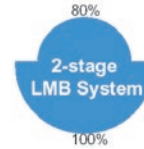
RCL (Rated Capacity Limitation) Safety System



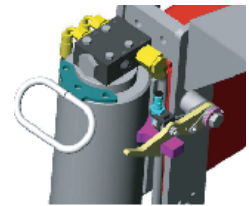
Overload Light Tower



EVS (Electronic Vehicle Stability) System



2-Stage LMB (Load Moment Limitation) System



Stabilizer Interlocks

WINCHES



OIL COOLERS



CRANE ACCESSORIES

ROTATORS AND ATTACHMENTS

Gear rotators are designed to bolt to attachments used on IMT articulating cranes. They are integral to some attachments and may be purchased separately for others. Forks, augers, and other attachments aid in lifting a variety of material on IMT articulating cranes.

Note: Contact IMT for specific options for a particular crane or application, as not all rotators and attachments can be used on all cranes.

MATERIAL HANDLING FORKS

Designed to handle wallboard, pallets of material, and other flat building products.



Universal Fork



Pallet Fork



Battery-Powered Universal Fork

ROTATORS



Shaft-Style Rotator



Flange-Style Rotator

SPECIALTY ATTACHMENTS



Auger



Stone-Lifting Attachment



POWERED BY PURPOSE

About Us

From its 1961 origins in Garner, Iowa, as a tire-recapping mold business, Iowa Mold Tooling Co. Inc. (IMT) has evolved into a premier manufacturer of service vehicles and material handling systems. As a proud member of Oshkosh Corporation, IMT is dedicated to innovative, customer-first solutions. Our commitment to quality, reliability, and performance in products like mechanics trucks, lube trucks, air compressors, and truck-mounted cranes has cemented our status as a trusted global partner. At IMT, our skilled and passionate team is the cornerstone of our success, driving the innovation and excellence that help our customers tackle demanding tasks and achieve exceptional results.

Iowa Mold Tooling Co., Inc. | 500 Highway 18 West | Garner, Iowa 50438 | 800-247-5958 | imt.com

IMT reserves the right to make changes in engineering, design, and specifications; add improvements; or discontinue manufacturing at any time without notice or obligation. IMT and the IMT logo are registered trademarks or trademarks of Iowa Mold Tooling Co., Inc., Garner, IA, USA. © 2026 Iowa Mold Tooling Co., Inc. All Rights Reserved.

01/26



An Oshkosh Corporation Business