



Parts and Specifications
Tirehand 15

IOWA MOLD TOOLING CO., INC.
500 HWY 18 WEST, GARNER, IA 50438
515-923-3711

A SUDBURY COMPANY

MANUAL PART NUMBER 99900287

4-91

Introduction - Read Carefully!

This manual is provided to assist you in the identification and ordering of parts, for your IMT equipment. It contains information such as specifications, parts lists, capacities, and parts identification.

It is the user's responsibility to maintain and operate this equipment in a manner that will result in the safest working conditions possible.

Warranty of this equipment will be void on any part of the unit subjected to overloading, abuse, lack of maintenance and unauthorized modifications. No warranty - verbal, written, or implied - other than the official, published IMT new machinery and equipment warranty will be valid on this unit.

In addition, it is also the user's responsibility to be aware of existing Federal, State, and Local codes and regulations governing the safe use and maintenance of this equipment. Three means are used throughout

this manual to gain the attention of personnel. They are NOTE's, CAUTION's, and WARNING,s and are defined as follows:

NOTE

A NOTE is used to either convey additional information or to provide further emphasis for a previous point.

CAUTION

A CAUTION is used when there is the very strong possibility of damage to the equipment or premature equipment failure.

WARNING

A WARNING is used when there is the potential for personal injury or death.

Treat this equipment with respect and service it regularly. These two things can add up to a safer work environment.

Table of Contents

PARAGRAPH	TITLE	PAGE
Section 1. SPECIFICATIONS		
1-1.	General	1-1
Section 2. PARTS		
2-1.	General	2-1
2-2.	Tirehand Identification	2-1
2-3.	Cylinder Identification	2-1
2-4.	Weldment Identification	2-2
2-5.	Ordering Repair Parts	2-2
Section 3. REFERENCE		
	Grease Zerk Locations and Lubricant Requirements	3-1
	Spare Parts List	3-2

List of Illustrations

FIGURE	TITLE	(PART NUMBER)	PAGE
A-1.	IMT Model 32018 Crane with Tirehand-15		1-1
A-2.	Geometric Configuration		1-2
B-1.	Serial Number Placard		2-1
B-2.	Cylinder Identification		2-1
B-3.	Weldment Part Number Locations		2-2
B-4.	Mast Assembly	(40707190)	2-3
B-5.	Base Assembly	(40707191)	2-4
B-6.	Body Assembly	(40707192)	2-5
B-7.	Clamp Assembly	(40707193)	2-6
B-8.	Hydraulic Kit	(91707195)	2-7
B-9.	Decal Kit	(41707748)	2-8
B-10.	Pad Rotation Cylinder	(3B111870)	2-9
B-11.	Clamp Cylinder	(3B148870)	2-10
B-12.	Tilt Cylinder	(3C120870)	2-11
C-1.	Grease Zerk Locations and Lubrication Requirements		3-1
C-2.	IMT Model 32018 Crane with Tirehand-15 (Inward Movement)		3-3
C-3.	IMT Model 32018 Crane with Tirehand-15 (Surface Movement)		3-3
C-4.	IMT Model 32018 Crane with Tirehand-15 (Stored Position)		3-4

NOTES

A series of horizontal dotted lines for writing notes.

Section 1. SPECIFICATIONS

1-1. GENERAL

MAXIMUM LIFTING CAPACITY	10,500 lbs (4763 kg)
TIRE SIZE CAPACITY (Smallest)	18:00-25 / 66" dia (167.6cm) / 1200 lbs (544 kg)
TIRE SIZE CAPACITY (Largest)	40:00-57 / 143" dia (363.2cm) / 10,400 lbs (4717 kg)
CLAMPING SPAN	64" to 144" (162.6cm to 365.8cm)
BODY ROTATION	450° (7.85 Rad)
CLAMP PAD ROTATION	90° (1.57 Rad.)
WEIGHT OF TIREHAND	4500 lbs (2041 kg)
TIREHAND TILT	+ 33° TO - 42° (+.58 Rad. to -0.73 Rad.)
IMT CRANE WHICH TH-15 IS DESIGNED FOR	IMT Model 32018 (truck chassis mounted)

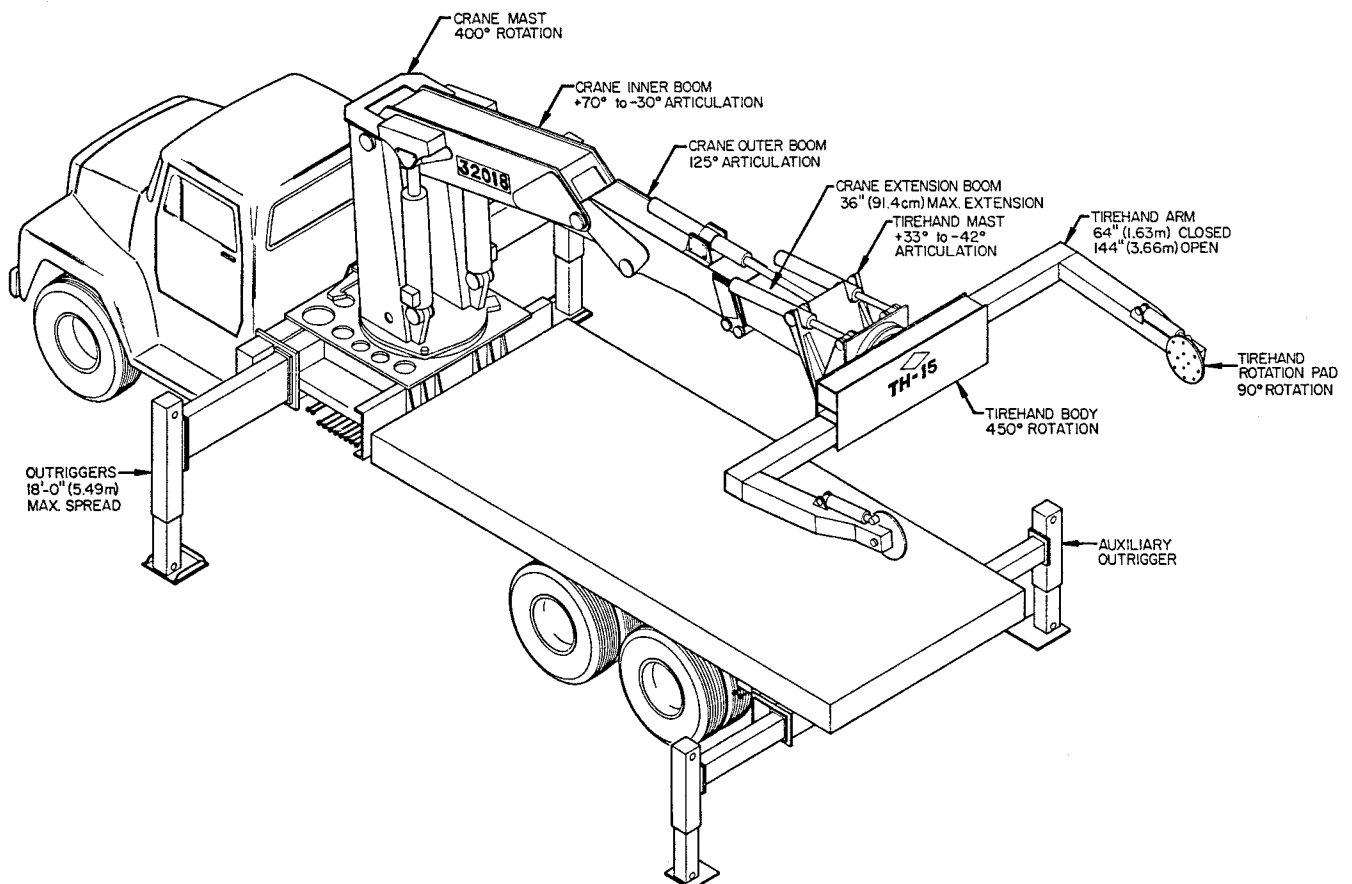


Figure A-1. IMT MODEL 32018 CRANE WITH TIREHAND-15

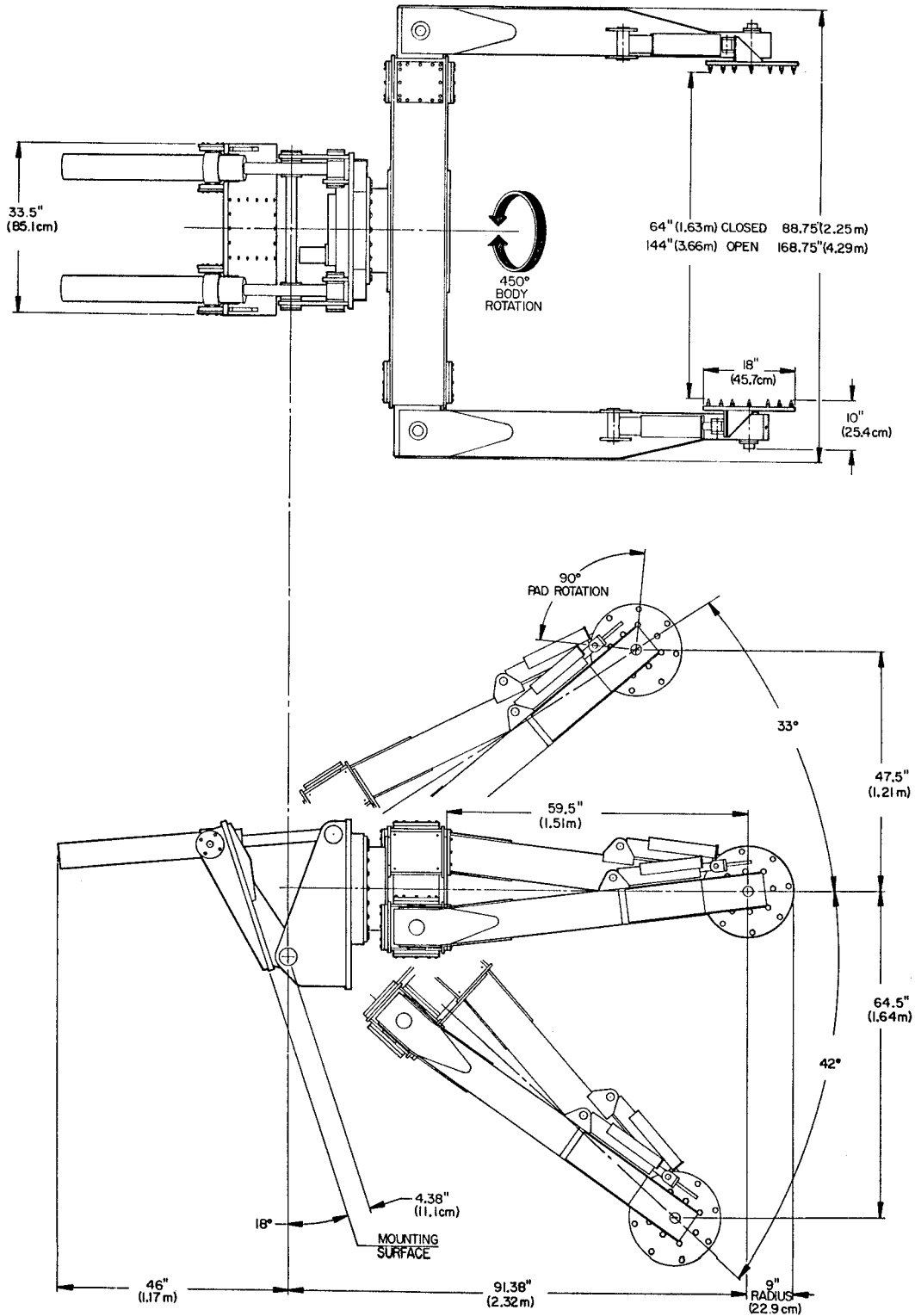


Figure A-2. GEOMETRIC CONFIGURATION

Section 2. PARTS

2-1. GENERAL

This section contains the exploded parts drawings with the accompanying parts list for the assemblies used on the Tirehand-15. These drawings are intended to be used in conjunction with those in the 32018 Crane manual and the instructions found in the REPAIR section in Volume 1.

WARNING

Do not attempt to repair any component without reading the information contained in the REPAIR section in Volume 1. Pay particular attention to the WARNING's, CAUTION's and NOTE's contained in that section. Failure to comply with these instructions may result in damage to the equipment, injury or death.

2-2. TIREHAND IDENTIFICATION

Every Tirehand has an identification placard (Figure B-1) attached to the body assembly. When ordering parts, communicating warranty information or referring to the unit in correspondence, always include the assigned serial and model numbers. All inquiries should be addressed to Iowa Mold Tooling Company, Inc.; 500 Highway 18 West; Garner, Iowa 50438. In Canada: IMT Cranes Canada, Ltd.; Orillia, Ontario; telephone (705) 325-7458.


MODEL MODELO MODELE	SERIAL NUMBER NUMERO DE SERIE NUMERO DE SERIE
DRAWING NUMBER NUMERO DE PLANO NUMERO DE PLAN	DATE FECHA DE FABRICACION DATE
	
Iowa Mold Tooling Co., Inc. Garner, Iowa U.S.A.	IMT Cranes Canada, Ltd. Orillia, Ontario Canada

Figure B-1. SERIAL NUMBER PLACARD

2-3. CYLINDER IDENTIFICATION

To ensure proper replacement parts are received, it is necessary to specify a complete number/letter sequence for any part request. Part numbers may be cross checked by comparing the stamped identification of the cylinder case (Figure B-2) against the information contained in this manual. You must use the part number stamped on the cylinder case when ordering parts.

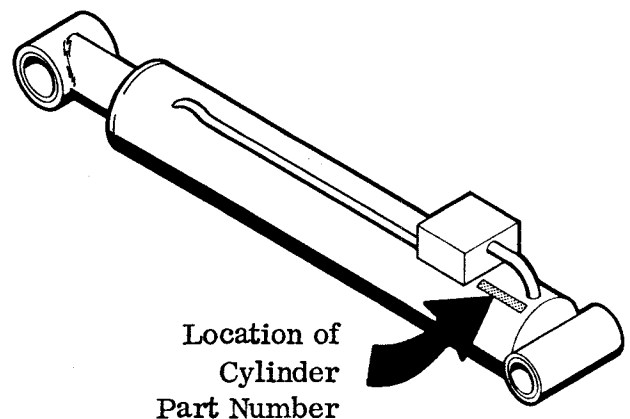


Figure B-2. CYLINDER IDENTIFICATION

2-4. WELDMENT IDENTIFICATION

Each of the major weldments of the Tirehand bears a stamped part number. Any time a major weldment is replaced, you must specify the complete part number as stamped on the weldment. The locations of the part numbers are shown in Figure B-3.

2-5. ORDERING REPAIR PARTS

When ordering replacement parts:

1. Give the model number of the unit.
2. Give the serial number of the unit.
3. Specify the complete part number. When ordering cylinder parts or one of the main weldments, always give the stamped part number.
4. Give a complete description of the part.
5. Specify the quantity required.

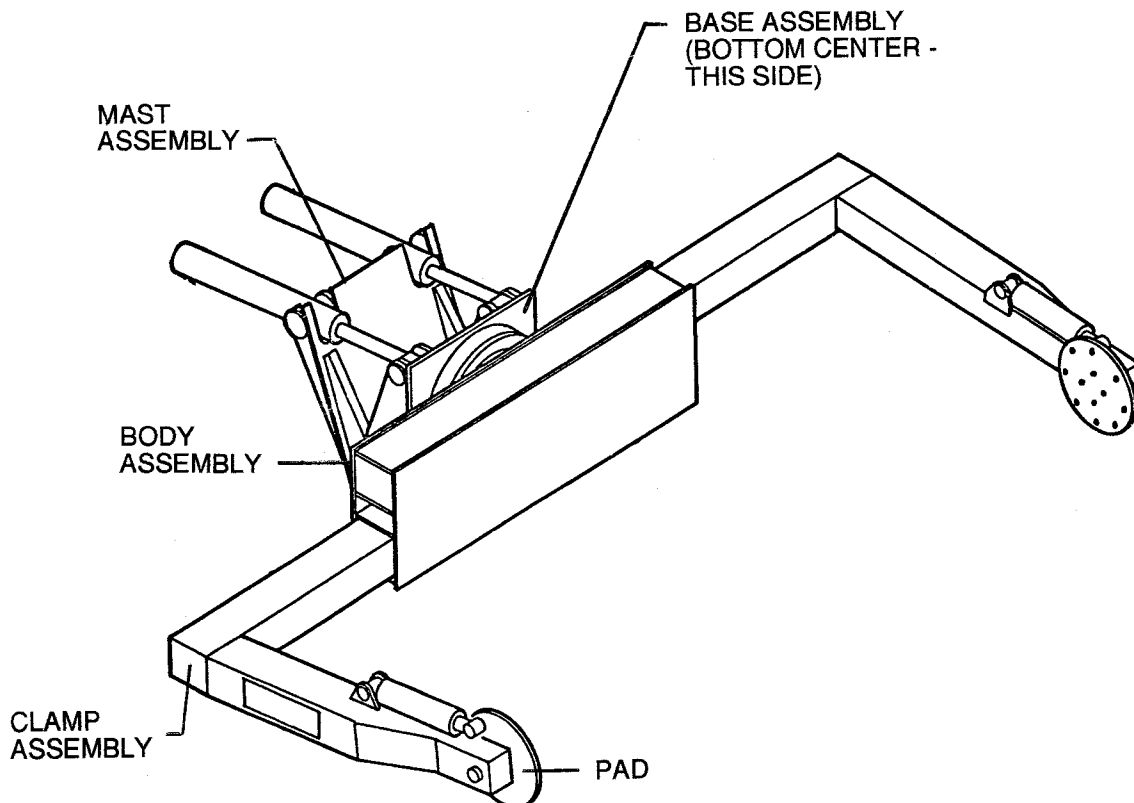
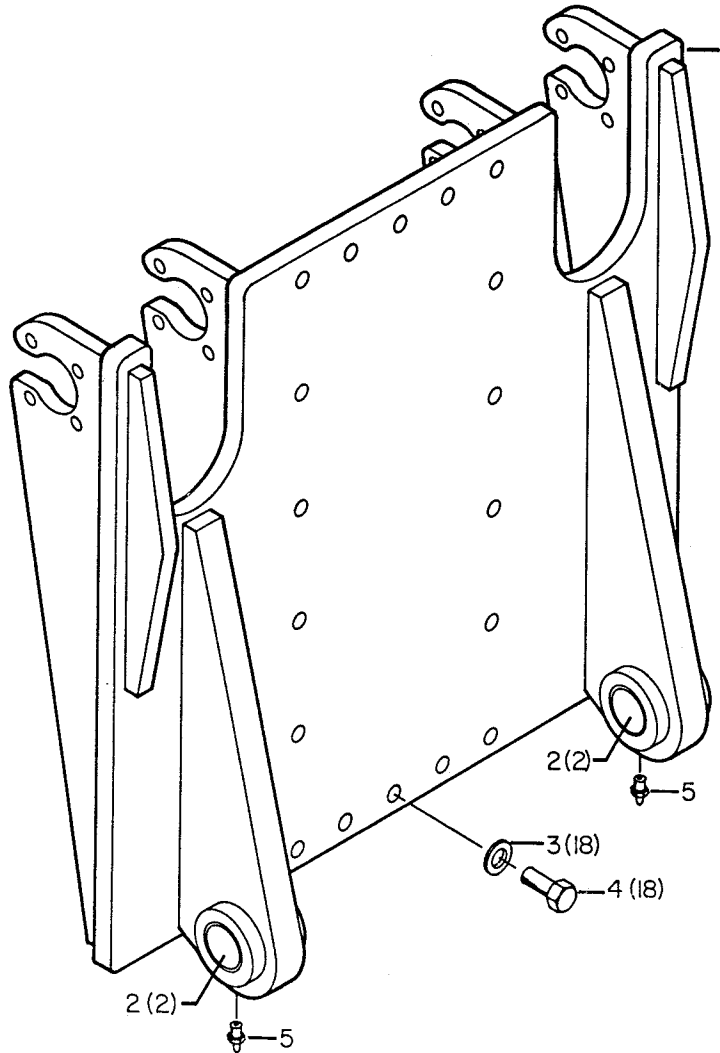
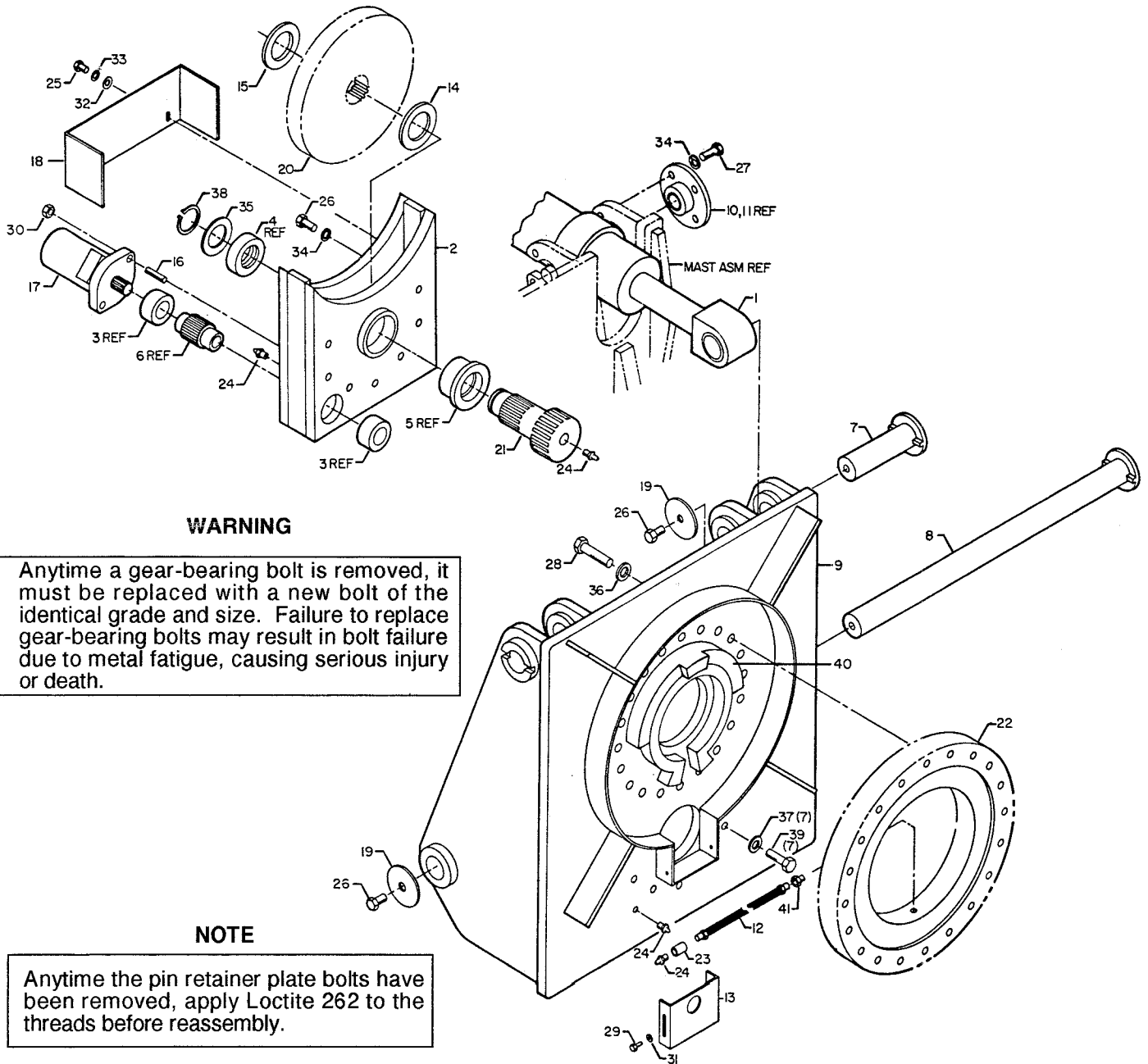


Figure B-3. WELDMENT PART NUMBER LOCATIONS



ITEM	PART NO.	DESCRIPTION	QTY
1.	52707161	MAST	1
2.	7BF81220	BUSHING	4REF
3.	72063116	WASHER 3/4 FLAT HARD	18
4.	72601484	CAP SCR 3/4-10X1-3/4 HH GR8	18
5.	72053508	ZERK 1/8NPT	2

Figure B-4. MAST ASSEMBLY (40707190)

**WARNING**

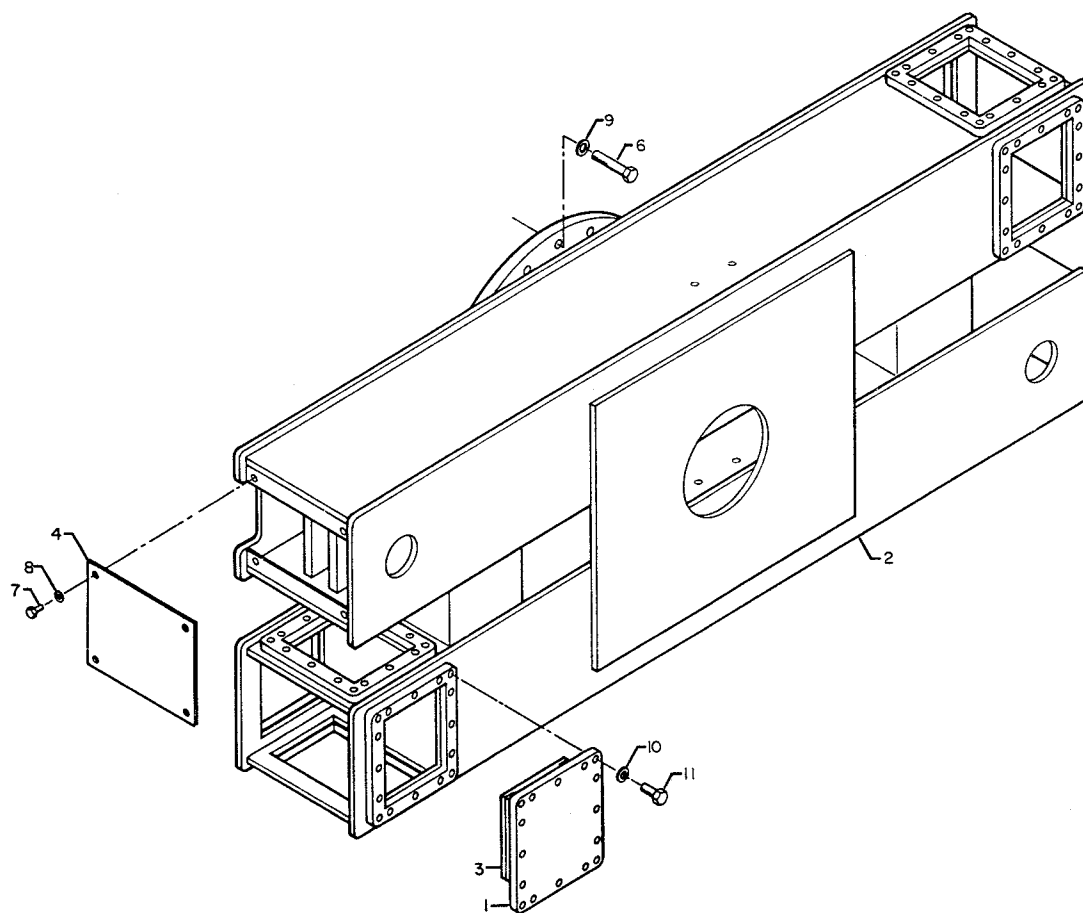
Anytime a gear-bearing bolt is removed, it must be replaced with a new bolt of the identical grade and size. Failure to replace gear-bearing bolts may result in bolt failure due to metal fatigue, causing serious injury or death.

NOTE

Anytime the pin retainer plate bolts have been removed, apply Loctite 262 to the threads before reassembly.

ITEM	PART NO.	DESCRIPTION	QTY	ITEM	PART NO.	DESCRIPTION	QTY
1.	3C120870	BASE TILT CYLINDER	2	21.	71056265	PINION GEAR	1
2.	51703654	SPUR GEAR BOX (INCL:3-6)	1	22.	71056361	TURNTABLE BEARING	1
3.	60020180	BUSHING (PART OF 2)	2REF	23.	72053301	COUPLING 1/8NPT	1
4.	60020181	BUSHING (PART OF 2)	1REF	24.	72053508	ZERK 1/8NPT	4
5.	60020182	BUSHING (PART OF 2)	1REF	25.	72060091	CAP SCR 1/2-13X1 HH GR5	2
6.	60106309	DRIVE GEAR (PART OF 2)	1REF	26.	72060147	CAP SCR 5/8-11X1 HH GR5	10
7.	52707133	PIN	2	27.	72060149	CAP SCR 5/8-11X1-1/2 HH GR5	16
8.	52707134	PIN	1	28.	72060207	CAP SCR 3/4-10X3 HH GR8	20
9.	52707150	BASE	1	29.	72060833	SCR 5/16-18X3/4 HH SLFTRPG	2
10.	52707166	LOCK PLATE (INCL:11)	4	30.	72062080	NUT 1/2-13 LOCK	2
11.	70034295	BEARING (PART OF 10)	4REF	31.	72063002	WASHER 5/16 WRT	2
12.	53000703	GREASE EXT 20"	1	32.	72063005	WASHER 1/2 WRT	2
13.	60010235	PINION COVER	1	33.	72063053	WASHER 1/2 LOCK	2
14.	60020033	THRUST WASHER	1	34.	72063055	WASHER 5/8 LOCK	23
15.	60020123	THRUST WASHER	1	35.	72063075	MACH BUSHING 2 X 10GA WR	1
16.	60106032	STUD 1/2-13X2	2	36.	72063116	WASHER 3/4 FLAT HARD	20
17.	73051384	MOTOR	1	37.	72063119	WASHER 5/8 FLAT HARD	7
18.	60106306	GUARD	1	38.	72066095	RETAINING RING 2" EXT STD	1
19.	60106331	PIN RETAINER PLATE 3-1/2"	3	39.	72060151	CAP SCR 5/8-11X2 HH GR8	7
20.	71056264	INTERMEDIATE GEAR	1	40.	52706638	ROTATION SLIDE	1
				41.	72531826	REDUCER BUSHING 1/4 1/8NPT	1

Figure B-5. BASE ASSEMBLY (40707191)

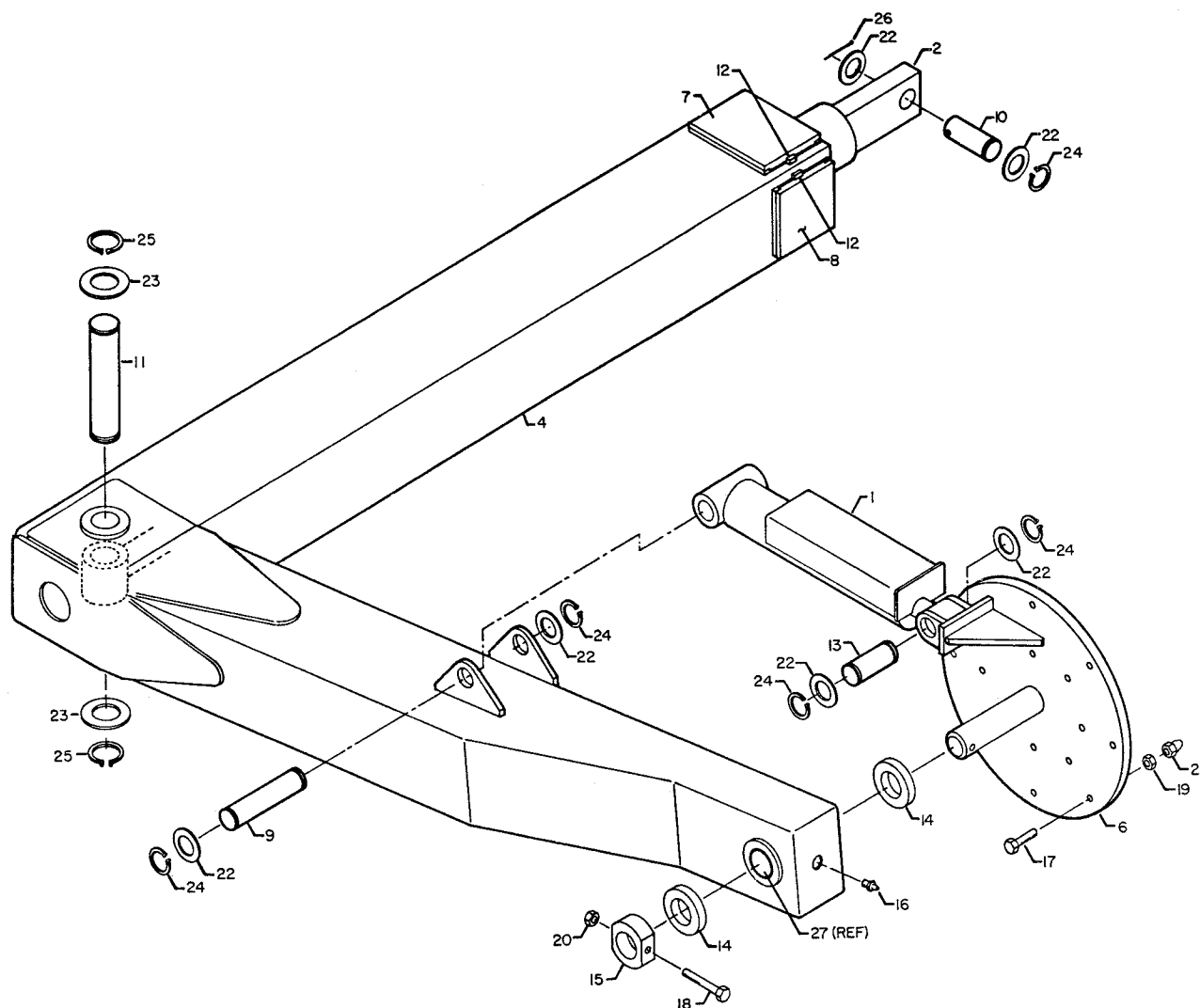


WARNING

Anytime a gear-bearing bolt is removed, it must be replaced with a new bolt of the identical grade and size. Failure to replace gear-bearing bolts may result in bolt failure due to metal fatigue, causing serious injury or death.

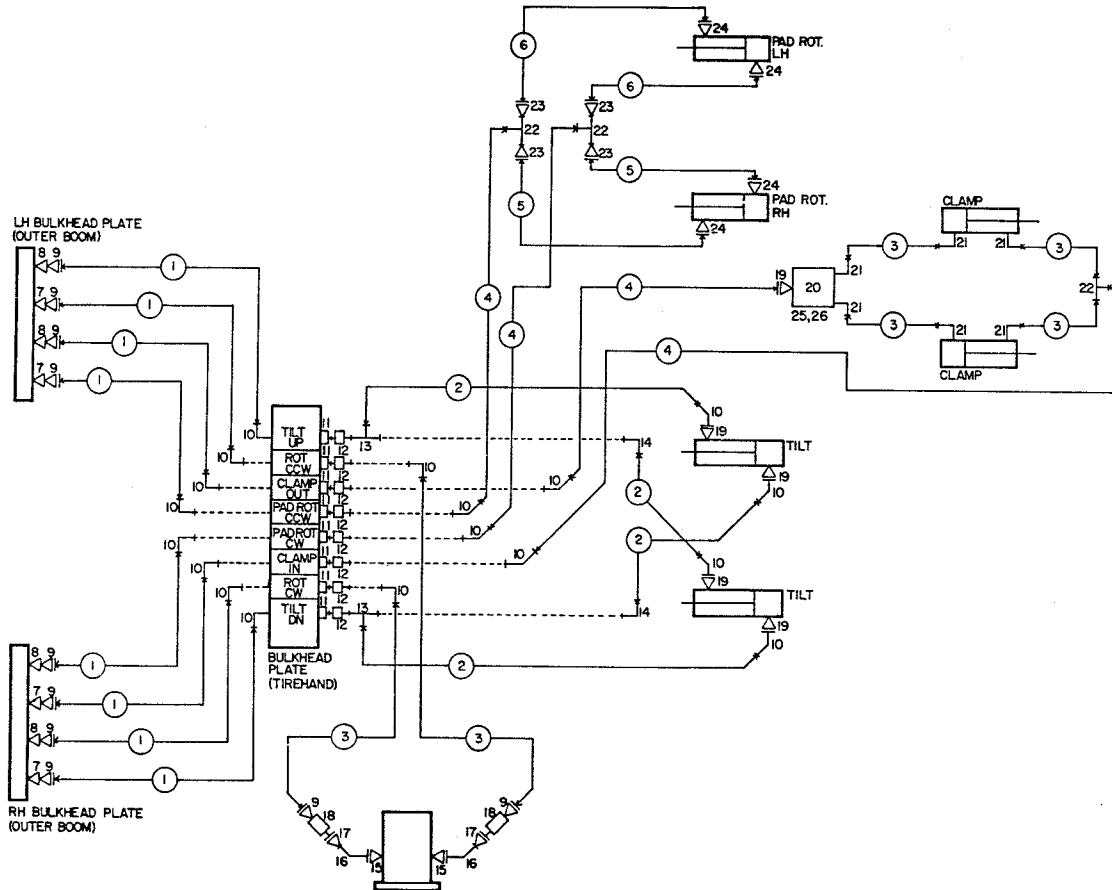
ITEM	PART NO.	DESCRIPTION	QTY
1.	51707213	WEAR PAD RETAINER	8
2.	51707217	BODY	1
3.	60030187	WEAR PAD	8
4.	60110688	END CAP	2
5.	70029119	SERIAL NUMBER PLACARD	1
6.	72060177	CAP SCR 5/8-11X3 HH GR8	10
7.	72060857	SCR 5/16-18X5/8 HH SLFTPG	8
8.	72063050	WASHER 5/16 LOCK	8
9.	72063119	WASHER 5/8 FLAT HARD	20
10.	72063132	WASHER 1/2 FLAT HARD	128
11.	72601272	CAP SCR 1/2-13X1-1/4 HH GR8	128
12.	72661216	GRIPNAIL 1/8 (NOT SHOWN)	2

Figure B-6. BODY ASSEMBLY (40707192)



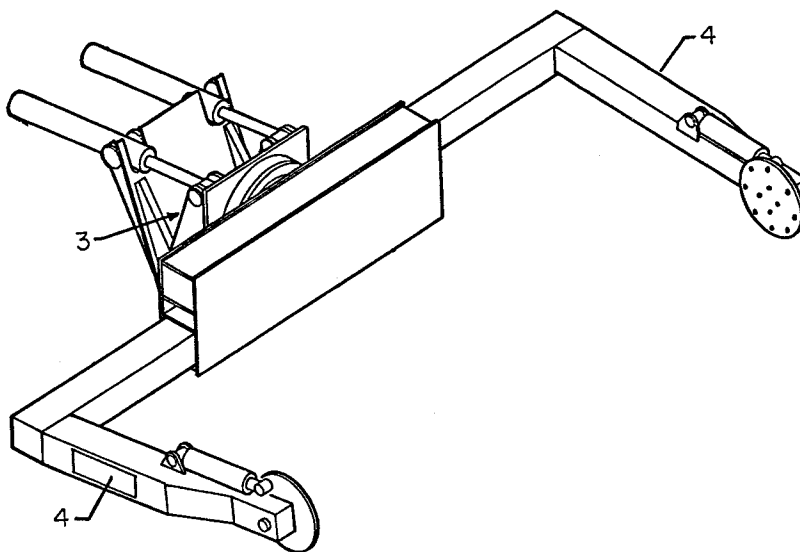
ITEM	PART NO.	DESCRIPTION	QTY	ITEM	PART NO.	DESCRIPTION	QTY
1.	3B111870	PAD ROTATION CYLINDER	2	15.	60110745	PAD RETAINER	2
2.	3B148870	CLAMP CYLINDER	2	16.	72053508	ZERK 1/8NPT	2
3.	52707223	ARM - LH (INCL:27)	1	17.	72060095	CAP SCR 1/2-13X2 HH GR5	32
4.	52707224	ARM - RH (INCL:27)	1	18.	72060098	CAP SCR 1/2-13X3-1/2 HH GR5	2
5.	52707232	PAD - LH	1	19.	72062004	NUT 1/2-13 HEX	32
6.	52707233	PAD - RH	1	20.	72062107	NUT 1/2-13 CTR LOCK	2
7.	60030125	WEAR PAD	4	21.	72062134	NUT 1/2-13 ACORN HIGH	32
8.	60030126	WEAR PAD	4	22.	72063037	MACH BUSHING 1-1/2 X 10GA NR	12
9.	60101664	PIN	2	23.	72063039	MACH BUSHING 2 X 10GA NR	4
10.	60102096	PIN	2	24.	72066132	RETAINING RING 1-1/2 EXT HD	10
11.	60102097	PIN	2	25.	72066136	RETAINING RING 2 EXT HD	4
12.	60107390	BAR	16	26.	72066197	COTTER PIN 3/16 X 2-1/2	2
13.	60110742	PIN	2	27.	7BF82020	BUSHING (PART OF 3 & 4)	4REF
14.	60110744	THRUST WASHER	4				

Figure B-7. CLAMP ASSEMBLY (40707193)



ITEM	PART NO.	DESCRIPTION	QTY	ITEM	PART NO.	DESCRIPTION	QTY
1.	51707811	HOSE ASM 3/8 X 47	8	14.	72532658	ELBOW 3/4MJIC 3/4FJIC SWVL	2
2.	51703660	HOSE ASM 3/8 X 20	4	15.	72053743	ADAPTER 7/8MSTR 3/8FPT	2
3.	51703661	HOSE ASM 3/8 X 36	6	16.	72531123	STREET ELBOW 3/8NPT 45°	2
4.	51707812	HOSE ASM 3/8 X 51	4	17.	72053723	ADAPTER 3/8MPT 3/8MPT	2
5.	51703596	HOSE ASM 1/4 X 120	2	18.	73054139	COLORFLOW VALVE 3/8FPT	2
6.	51707810	HOSE ASM 1/4 X 136	2	19.	72532358	ADAPTER 3/4MSTR 3/4MJIC	5
7.	72053542	DISCONNECT NIPPLE 3/8FPT	4	20.	73054483	FLOW DIVIDER VALVE	1
8.	72053540	DISCONNECT COUPLER 3/8FPT	4	21.	72053763	ELBOW 3/4MSTR 3/4MJIC 90°	6
9.	72053670	ADAPTER 3/8MPT 3/4MJIC	10	22.	72531205	TEE 3/4MJIC	3
10.	72532658	ELBOW 3/4MJIC 3/4FJIC 45° SW	18	23.	72532665	ADAPTER 7/16MJIC 3/4FJIC	4
11.	72532672	BULKHD UNION 3/4JIC	8	24.	72532351	ADAPTER 7/16MSTR 7/16MJIC	4
12.	72531708	BULKHD NUT 3/4JIC	8	25.	72060009	CAP SCR 1/4-20X2-1/4 HH GR5	2
13.	72532657	TEE 3/4JIC SWVL NUT RUN	2	26.	72063001	WASHER 1/4 WRT	2

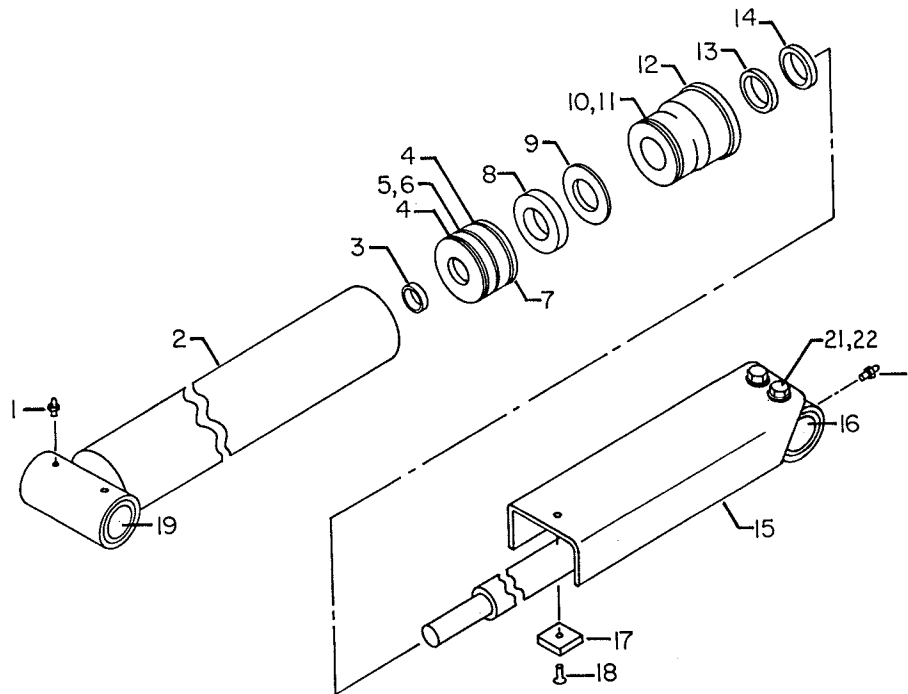
Figure B-8. HYDRAULIC KIT (91707195)



ITEM	PART NO.	DESCRIPTION	QTY
1.	70391612	DECAL - GREASE WKLY LH	8
2.	70391613	DECAL - GREASE WKLY RH	8
3.	70392524	DECAL - ROTATE/GREASE	1
4.	70392724	DECAL - TH-15 IDENT	2
5.	71392727	DECAL - CONTROL SS	1
6.	71392728	DECAL - CONTROL CS	1

PLACEMENT	
ITEM	LOCATION
1,2	NEAR ALL GREASE ZERKS
5.	AT STREETSIDE CONTROLS
6	AT CURBSIDE CONTROLS

Figure B-9. DECAL KIT (41707748)



DIMENSIONS

Bore	3"
Stroke	11-1/4"
C-C Closed	20-1/2"
Rod diameter	1-1/2"
Pin diameter	1-1/2"

NOTE

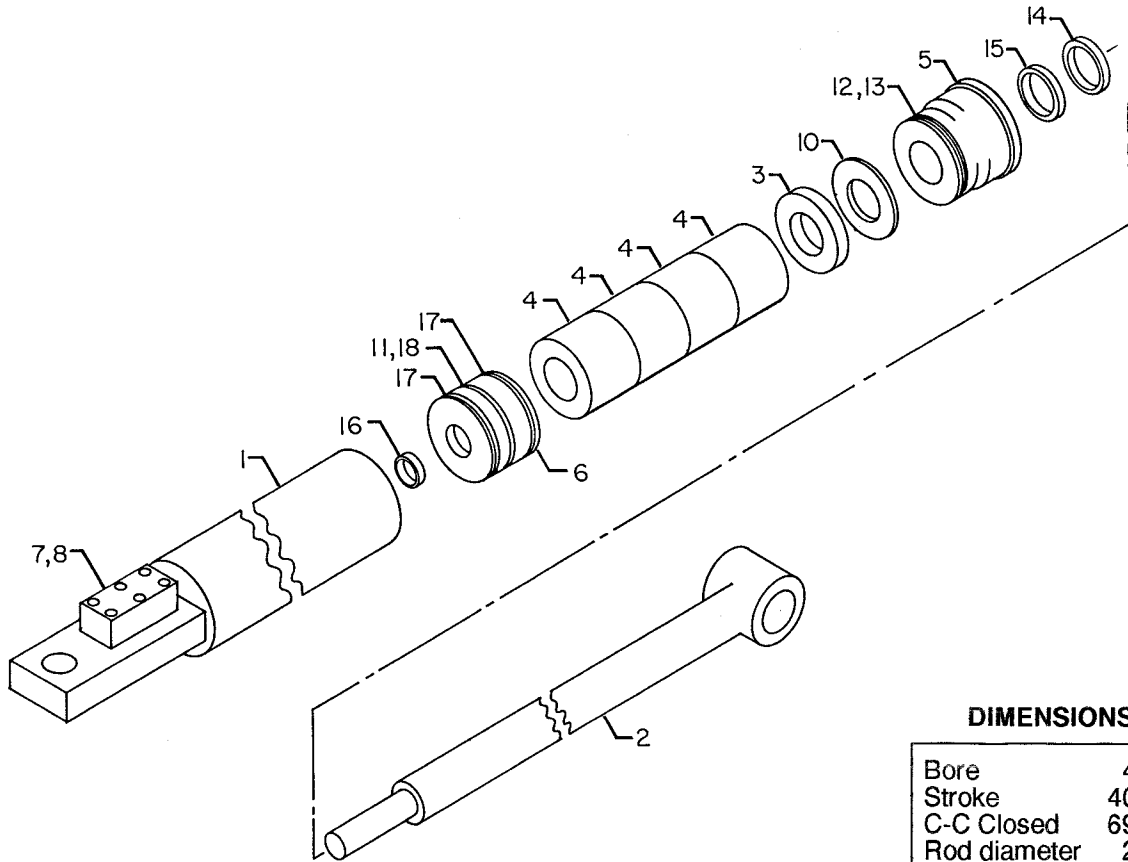
IT IS RECOMMENDED THAT ALL COMPONENTS OF THE SEAL KIT BE REPLACED WHENEVER THE CYLINDER IS DISASSEMBLED. THIS WILL REDUCE FUTURE DOWNTIME.

APPLY "LUBRIPLATE #630-2" MEDIUM HEAVY, MULTI-PURPOSE LUBRICANT OR EQUIVALENT TO ALL PISTON AND HEAD GLANDS, LOCK RING AND ROD THREADS BEFORE ASSEMBLY.

USE "NEVER-SEEZ" OR EQUIVALENT BETWEEN THE HEAD AND THE CASE WHEN ASSEMBLING THE CYLINDER.

ITEM	PART NO.	DESCRIPTION	QTY
1.	73053507	ZERK 1/8NPT (PART OF 2 & 15)	3REF
2.	4B114870	CASE ASM (INCL:1,19)	1
3.	7T61N106	LOCK RING SEAL (PART OF 20)	1REF
4.	7T65I030	PISTON RING (PART OF 20)	2REF
5.	7T66P030	PISTON SEAL (PART OF 20)	1REF
6.	7Q072145	O-RING (PART OF 20)	1REF
7.	6I030106	PISTON	1
8.	6C075015	STOP TUBE	1
9.	6A025015	WAFER LOCK (PART OF 20)	1REF
10.	7Q10P334	BACK-UP RING (PART OF 20)	1REF
11.	7Q072334	O-RING (PART OF 20)	1REF
12.	6H030015	HEAD	1
13.	7R546015	ROD SEAL (PART OF 20)	1REF
14.	7R14P015	ROD WIPER (PART OF 20)	1REF
15.	4G111870	ROD ASM (INCL:1,16-18,21,2)	1
16.	7BF80715	BUSHING (PART OF 15)	2REF
17.	5F022850	WEAR PAD (PART OF 15)	1REF
18.	72060868	SCR 1/4-20X1/2 (PART OF 15)	1REF
19.	7BF81015	BUSHING (PART OF 2)	4REF
20.	9C121217	SEAL KIT (INCL:3-6,9-11,13,14)	1
21.	72060023	CAP SCR 5/16-18X3/4 HH GR5 (PART OF 15)	2REF
22.	72063050	WASHER 5/16 LOCK (PART OF 15)	2REF

Figure B-10. PAD ROTATION CYLINDER (3B11870)



DIMENSIONS

Bore	4"
Stroke	40"
C-C Closed	69-1/2"
Rod diameter	2"
Pin diameter	2"

NOTE

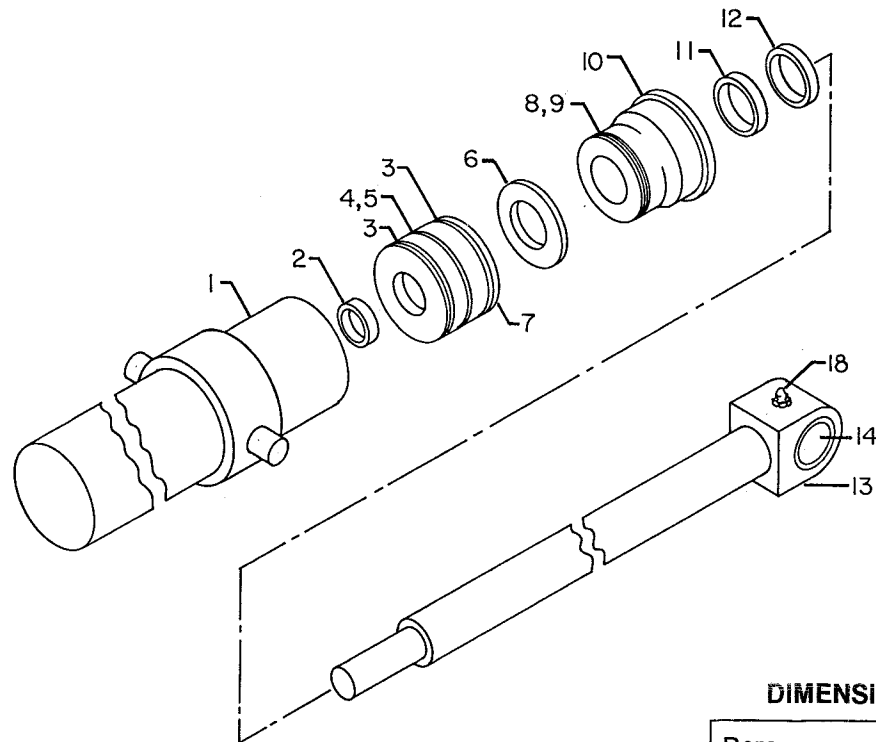
IT IS RECOMMENDED THAT ALL COMPONENTS OF THE SEAL KIT BE REPLACED WHENEVER THE CYLINDER IS DISASSEMBLED. THIS WILL REDUCE FUTURE DOWNTIME.

APPLY "LUBRIPLATE #630-2" MEDIUM HEAVY, MULTI-PURPOSE LUBRICANT OR EQUIVALENT TO ALL PISTON AND HEAD GLANDS, LOCK RING AND ROD THREADS BEFORE ASSEMBLY.

USE "NEVER-SEEZ" OR EQUIVALENT BETWEEN THE HEAD AND THE CASE WHEN ASSEMBLING THE CYLINDER.

ITEM	PART NO.	DESCRIPTION	QTY
1.	4B148870	CASE ASM	1
2.	4G148870	ROD ASM	1
3.	6C075020	STOP TUBE	1
4.	6C300020	STOP TUBE	4
5.	6H040020	HEAD	1
6.	6I040143	PISTON	1
7.	72060708	CAP SCR 1/4-20X1-1/4 SH	6
8.	73054004	VALVE	1
9.	9C161623	SEAL KIT (INCL:10-18)	1
10.	6A025020	WAFER LOCK (PART OF 9)	1REF
11.	7Q072153	O-RING (PART OF 9)	1REF
12.	7Q072342	O-RING (PART OF 9)	1REF
13.	7Q10P342	BACK-UP RING (PART OF 9)	1REF
14.	7R14P020	ROD WIPER (PART OF 9)	1REF
15.	7R546020	SEAL (PART OF 9)	1REF
16.	7T61N143	LOCK RING (PART OF 9)	1REF
17.	7T65I040	PISTON RING (PART OF 9)	2REF
18.	7T66P040	PISTON SEAL (PART OF 9)	1REF

Figure B-11. CLAMP CYLINDER (3B148870)



DIMENSIONS

Bore	4-1/2"
Stroke	29-3/4"
C-C Closed	10"
Rod diameter	2-1/4"
Pin diameter	2"

NOTE

IT IS RECOMMENDED THAT ALL COMPONENTS OF THE SEAL KIT BE REPLACED WHENEVER THE CYLINDER IS DISASSEMBLED. THIS WILL REDUCE FUTURE DOWNTIME.

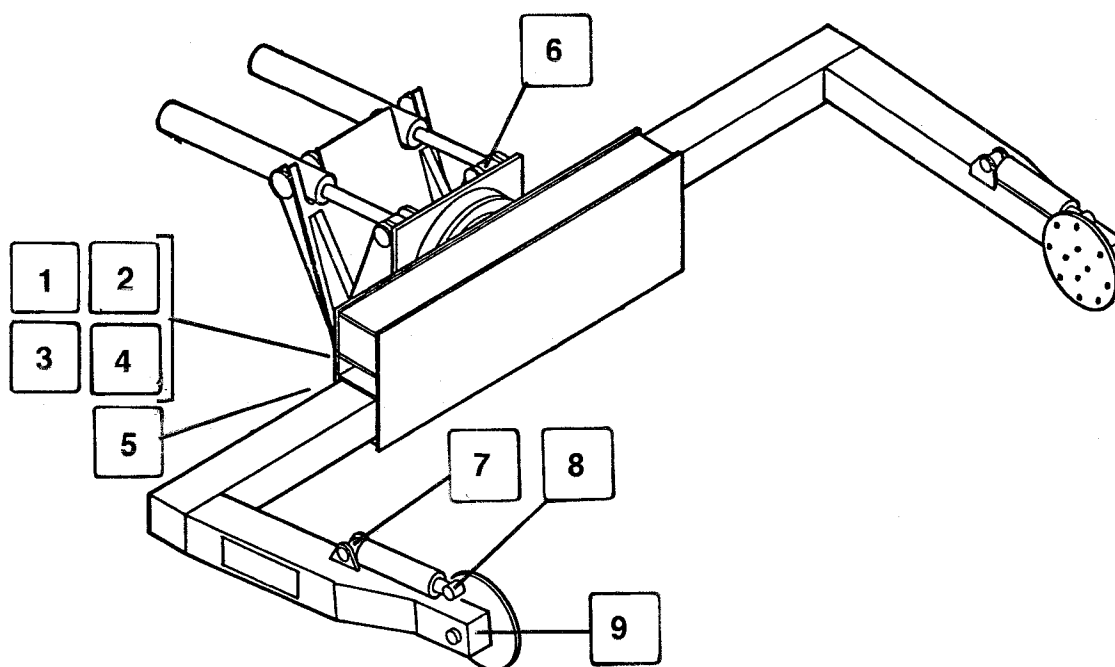
APPLY "LUBRIPLATE #630-2" MEDIUM HEAVY, MULTI-PURPOSE LUBRICANT OR EQUIVALENT TO ALL PISTON AND HEAD GLANDS, LOCK RING AND ROD THREADS BEFORE ASSEMBLY.

USE "NEVER-SEEZ" OR EQUIVALENT BETWEEN THE HEAD AND THE CASE WHEN ASSEMBLING THE CYLINDER.

ITEM	PART NO.	DESCRIPTION	QTY
1.	4C120870	CASE ASM	1
2.	7T61N143	LOCK RING SEAL (PART OF 17)	1REF
3.	7T65I045	PISTON RING (PART OF 17)	2REF
4.	7T66P045	PISTON SEAL (PART OF 17)	1REF
5.	7Q072155	O-RING (PART OF 17)	1REF
6.	6A025022	WAFER LOCK (PART OF 17)	1REF
7.	6I045143	PISTON	1
8.	7Q10P346	BACK-UP RING (PART OF 17)	1REF
9.	7Q072345	O-RING (PART OF 17)	1REF
10.	6H045022	HEAD	1
11.	7R546022	ROD SEAL (PART OF 17)	1REF
12.	7R14P022	ROD WIPER (PART OF 17)	1REF
13.	4G120870	ROD ASM (INCL: 14, 18)	1
14.	7BF81220	BUSHING (PART OF 13)	2REF
15.	73054242	VALVE (NOT SHOWN)	1
16.	7PNPXT02	PLUG (NOT SHOWN)	4REF
17.	9C181823	SEAL KIT (INCL: 2-6, 8, 9, 11, 12)	1
18.	72053507	ZERK 1/4-28 (PART OF 13)	1REF

Figure B-12. TILT CYLINDER (3C120870)

SECTION 3. Reference



ITEM	LOCATION DESCRIPTION	LUBRICANT	FREQUENCY
1.	DRIVE GEAR ZERK (FRONT OF BODY)	SHELL ALVANIA 2EP OR SHELL RETINAX "A"	WEEKLY
2.	TURNTABLE/BEARING GREASE EXTENSION *ROTATE CRANE WHILE GREASING		
3.	PINION GEAR ZERK		
4.	SPUR GEAR BOX ZERK		
5.	MAST/BODY HINGE PIN		
6.	TILT CYLINDER ROD		
7.	PAD ROTATION CYLINDER BASE		
8.	PAD ROTATION CYLINDER ROD		
9.	PAD ROTATION AXLE		

NOTE: All application points must be greased weekly under normal work loads and moderate weather conditions. Under severe operating conditions, lubrication should be performed more frequently. See Volume 1; Operation, Maintenance and Repair for additional lubrication requirements.

Figure C-1. GREASE ZERK LOCATIONS AND LUBRICANT REQUIREMENTS

SPARE PARTS LIST

1-Year Supply

This spare parts list does not necessarily indicate that the items can be expected to fail in the course of a year. It is intended to provide the user with a stock of parts sufficient to keep the unit operating with minimal down-time waiting for parts. Obviously, there may be part failures not covered by this list.

The item numbers shown on this list correspond to the item numbers on the page listed.

FIG. NO.	ITEM NO.	PART NO.	DESCRIPTION	QTY
B-4.	2	7BF81220	BUSHING	4
B-5.	3	60020180	BUSHING	2
B-5.	4	60020181	BUSHING	1
B-5.	5	60020182	BUSHING	1
B-5.	6	60106309	DRIVE GEAR	1
B-5.	11	70034295	BEARING	4
B-5.	17	73051384	MOTOR	1
B-5.	20	71056264	INTERMEDIATE GEAR	1
B-5.	21	71056265	PINION GEAR	1
B-5.	22	71056361	TURNTABLE BEARING	1
B-5.	28	72060207	CAP SCR 3/4-10X3 HH GR8	20
B-5.	36	72063116	WASHER 3/4 HARD FLAT	20
B-6.	3	60030187	WEAR PAD	8
B-6.	6	60060177	CAP SCR 5/8-11X3 HH GR8	20
B-6.	9	72063119	WASHER 5/8 HARD FLAT	20
B-7.	7	60030125	WEAR PAD	4
B-7.	8	60030126	WEAR PAD	4
B-7.	27	7BF82020	BUSHING	4
B-10.	16	7BF80715	BUSHING	4
B-10.	17	5F022850	WEAR PAD	2
B-10.	19	7BF81015	BUSHING	8
B-10.	20	9C121217	SEAL KIT	2
B-11.	8	73054004	VALVE	2
B-11.	9	9C161623	SEAL KIT	2
B-12.	14	7BF81220	BUSHING	4
B-12.	15	73054242	VALVE	2
B-12.	17	9C181823	SEAL KIT	2

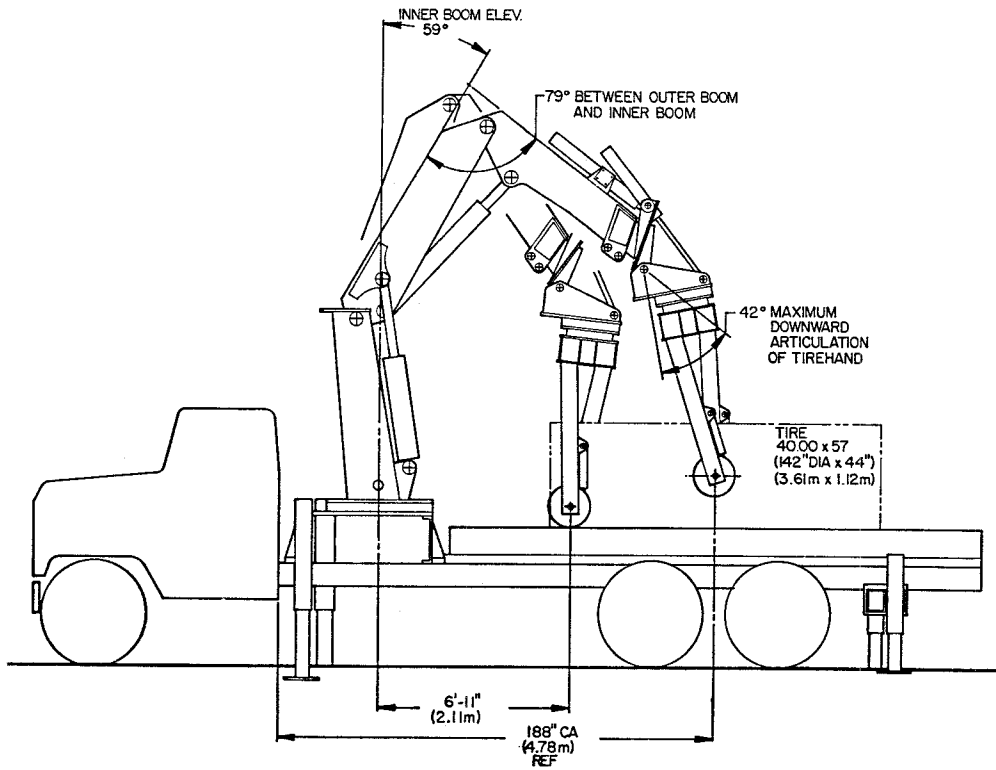


Figure C-2. IMT MODEL 32018 CRANE WITH TIREHAND-15 (INWARD MOVEMENT)

IN:
 INNER BOOM +70° (MAX)
 OUTER BOOM -125° (MAX)
 EXTENSION BOOM EXTENDED 13" (33.0cm)
 TIREHAND +8° TO OUTER/EXTENSION BOOMS

OUT:
 INNER BOOM -7°
 OUTER BOOM FULLY OUT
 EXTENSION BOOM EXTENDED 36" (91.4cm) (MAX)
 TIREHAND PARALLEL WITH OUTER/EXTENSION BOOMS

TIRE HORIZONTAL:
 INNER BOOM -7°
 OUTER BOOM FULLY OUT
 EXTENSION BOOM EXTENDED 36" (91.4cm) (MAX)
 TIREHAND AT MAX. TILT (42° BELOW OUTER/EXTENSION BOOMS)

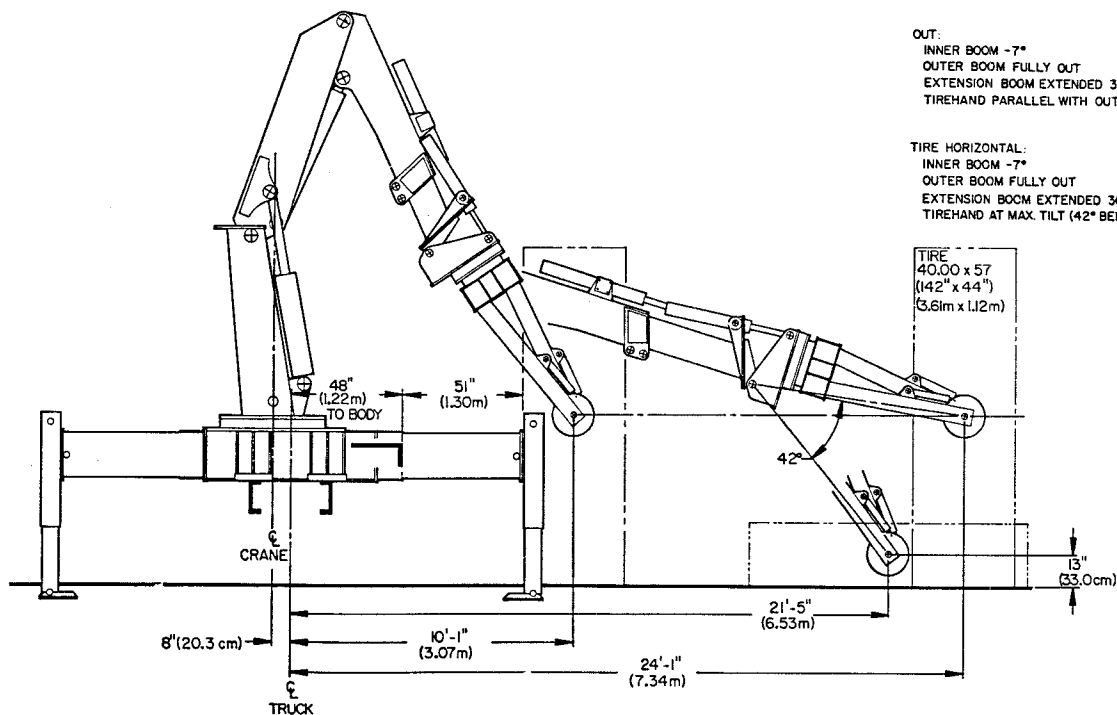


Figure C-3. IMT MODEL 32018 CRANE WITH TIREHAND-15 (SURFACE MOVEMENT)

STORED:
 INNER BOOM -12°
 OUTER BOOM -21° TO INNER BOOM
 EXTENSION BOOM FULLY RETRACTED
 TIREHAND +33° TO OUTER/EXTENSION BOOMS

CHASSIS SPECIFICATIONS:
 FRONT AXLE RATING _____ (9072 Kg) 20,000 lbs
 REAR AXLE RATING _____ (18,144 Kg) 40,000 lbs
 GROSS VEHICLE WEIGHT RATING (27,216Kg) 60,000 lbs
 FRAME SECTION MODULUS _____ (754 cm³) 46 in³
 FRAME R B M _____ (58,300 Kg·m) 5,060,000 in·lbs
 CAB TO AXLE-APPROX _____ (4.78m) 188"
 WHEEL BASE-APPROX _____ (6.81m) 268"

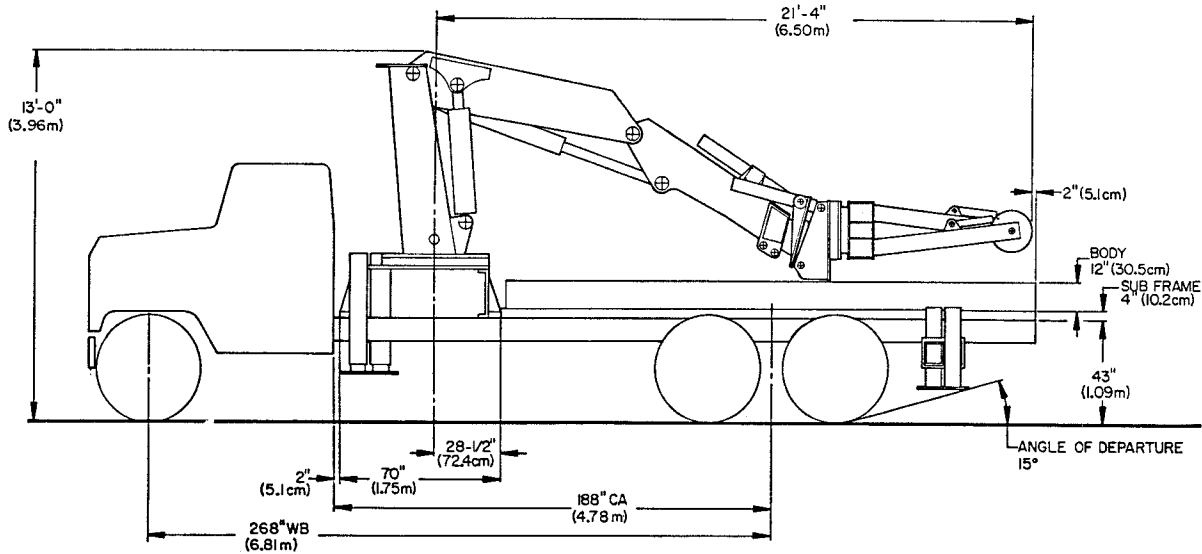


Figure C-4. IMT MODEL 32018 CRANE WITH TIREHAND-15 (STORED POSITION)

The information within this manual has been compiled and checked but errors do occur. To provide our customers with a method of communicating those errors we have provided the Manual Change Request form below. In addition to error reporting, you are encouraged to suggest changes or additions to the manual which would be of benefit to you. We cannot guarantee that these additions will be made but we do promise to consider them. When completing the form, please write or print clearly. Submit a copy of the completed form to the address listed below.

MANUAL CHANGE REQUEST

DATE	PRODUCT MANUAL	TH-15	MANUAL PART NO.	99900287-4/91
SUBMITTED BY				
COMPANY				
ADDRESS				
CITY, STATE, ZIP				
TELEPHONE				

ERROR FOUND

LOCATION OF ERROR (page no.): _____

DESCRIPTION OF ERROR: _____

REQUEST FOR ADDITION TO MANUAL

DESCRIPTION OF ADDITION: _____

REASON FOR ADDITION: _____

MAIL TO: IOWA MOLD TOOLING Co., Inc.
 Box 189,
 Garner IA 50438
 ATTN: Technical Publications

MANUFACTURER'S LIMITED WARRANTY

WARRANTY COVERAGE - Products manufactured by Iowa Mold Tooling Co., Inc. (IMT) are warranted to be free from defects in material and workmanship, under proper use, application and maintenance in accordance with IMT's written recommendations, instructions and specifications as follows:

1. Ninety (90) days; labor on IMT workmanship from the date of delivery to the end user.
2. One (1) year; original IMT parts from the date of delivery to the end user.

IMT's obligation under this warranty is limited to, and the sole remedy for any such defect shall be the repair or replacement (at IMT's option) of unaltered parts returned to IMT, freight prepaid, provided such defect occurs within the above stated warranty period and is reported within fourteen (14) days of its occurrence.

IMPLIED WARRANTY EXCLUDED - This is the only authorized IMT warranty and is in lieu of all other express or implied warranties or representations, including any implied warranties of merchantability or fitness for any particular purpose or of any other obligations on the part of IMT.

ITEMS EXCLUDED - The manufacturer gives no warranty on any components or parts purchased by the manufacturer, and such components as are covered only by the warranties of their respective manufacturers.

WARRANTY CLAIMS - Warranty claims must be submitted and shall be processed in accordance with IMT's established warranty claim procedure.

WARRANTY SERVICE - Warranty service will be performed by any IMT distributor authorized to sell new IMT products of the type involved or by any IMT Service Center authorized to service the type of product involved or by IMT in the event of direct sales made by IMT. At the time of requesting warranty service, the purchaser must present evidence of the date of delivery of the product. The purchaser shall pay any premium for overtime labor requested by the purchaser, any charge for making service calls and for transporting the equipment to the place where warranty work is performed.

WARRANTY VOIDED - All obligations of IMT under this warranty shall be terminated: (1) if service other than normal maintenance or normal replacement of service items is performed by someone other than an authorized IMT dealer, (2) if product is modified or altered in ways not approved by IMT.

PURCHASER'S RESPONSIBILITY - This warranty covers only defective material and workmanship. It does not cover depreciation or damage caused by normal wear, accident, improper protection in storage, or improper use. The purchaser has the obligation of performing the care and maintenance duties discussed in IMT's written recommendations, instructions and specifications. Any damage which results because of purchaser's failure to perform such duties shall not be covered by this warranty. The cost of normal maintenance and normal replacement of service items such as filters, belts, etc. shall be paid by the purchaser.

CONSEQUENTIAL DAMAGES - The only remedies the purchaser has in connection with the breach or performance of any warranty on IMT products are those set forth above. In no event will the dealer, IMT or any company affiliated with IMT, be liable for business interruptions, loss of sales and/or profits, rental or substitute equipment, costs of delay or for any other special, indirect, incidental or consequential losses, costs or damages.

REPRESENTATIONS EXCLUDED - IMT products are subject to no expressed, implied or statutory warranty other than herein set forth, and no agent, representative or distributor of the manufacturer has any authority to alter the terms of this warranty in any way whatsoever or to make any representations or promises, express or implied, as to the quality or performance of IMT products other than those set forth above.

CHANGE IN DESIGN - IMT reserves the right to make changes in design or improvements upon its products without imposing any obligation upon itself to install the same upon its products theretofore manufactured.

Effective January, 1984

This parts manual is provided to the user to assist in servicing the equipment. It is the property of Iowa Mold Tooling Co., Inc and, as such, may not be reproduced either whole or in part, whether by chemical, electrostatic, mechanical or photographic means without the expressed written permission of an officer of Iowa Mold Tooling Co., Inc. One manual is provided with each piece of new equipment and additional manuals may be obtained at a nominal price.

IOWA MOLD TOOLING Co., Inc.
500 Hwy 18 West - Garner - IA 50438
515-923-3711

A SUDBURY COMPANY