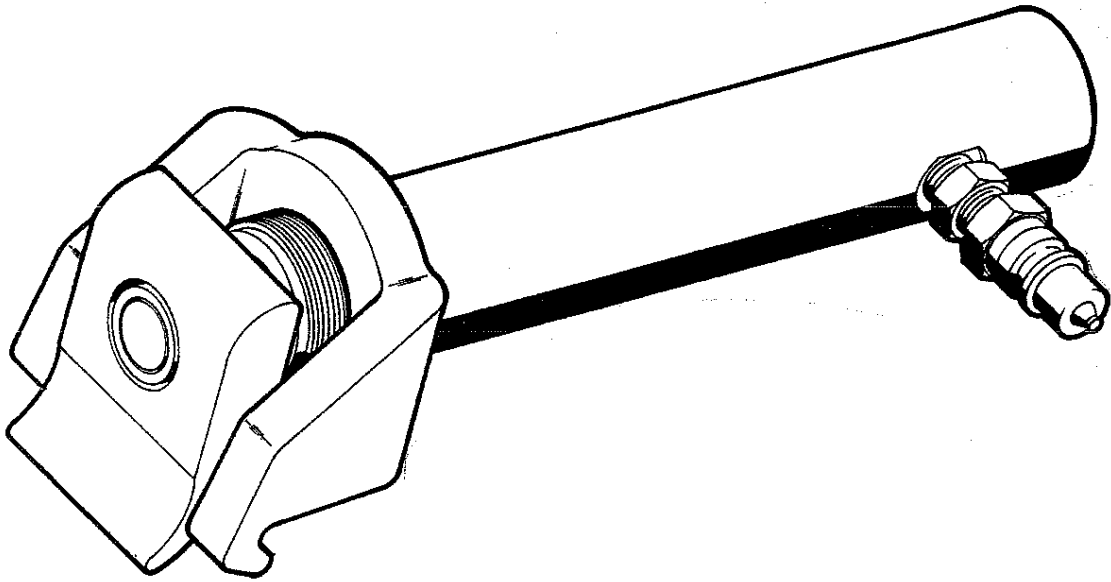


BEAD PUSH-OFF TOOL



The IMT bead push-off tool is designed to assist the tire serviceman in removing a tire from the wheel.

To operate the tool, it must be connected to either a hand powered hydraulic pump or an air-over-hydraulic pump (IMT Part Number 73051010).

After the first bead is off the wheel, proceed as follows:

1. Pry the tire away from the wheel with a tire iron (Step 1).
2. When there is adequate clearance, hook the tool on the rim (Step 2)

WARNING

Make certain the hooks are both properly aligned on the wheel rim. Faulty alignment could result in the tool being thrown by pressure from the tire bead and may cause an injury or damage to the equipment.

3. Extend the ram by applying power to the tool (Step 3).

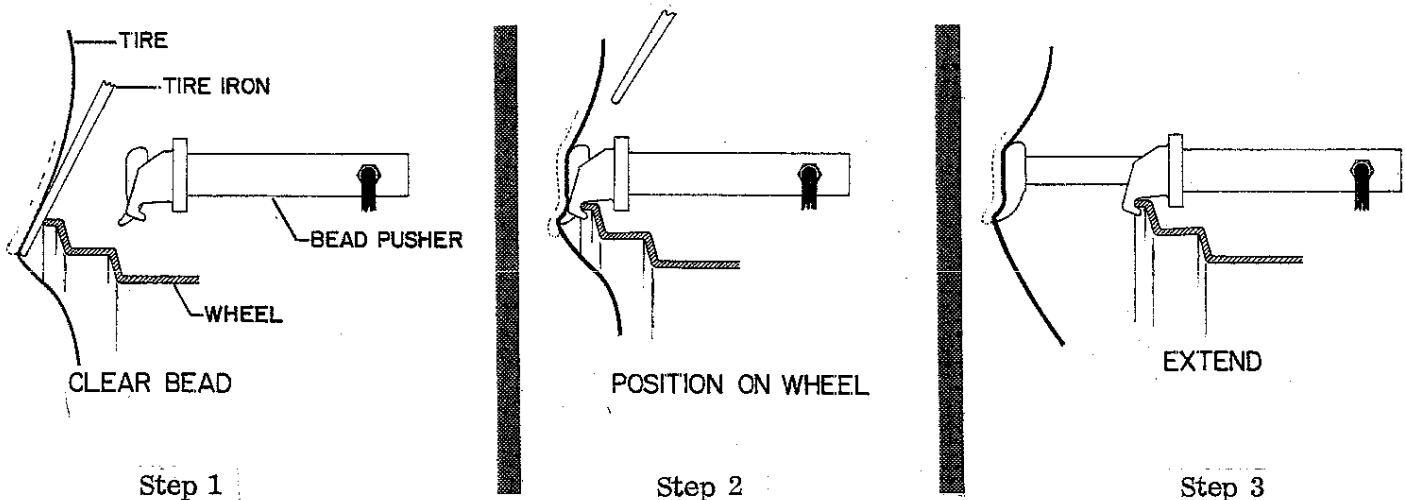
WARNING

Keep hands clear of the tool while applying power. Failure to comply may result in a hand injury due to crushing between the tool and the wheel.

4. Continue working around the wheel with the tire irons and the bead push-off tool until the tire is free.
5. To retract the ram, depress the "RETRACT" end of the pump pedal and push the ram back into the cylinder.

NOTE

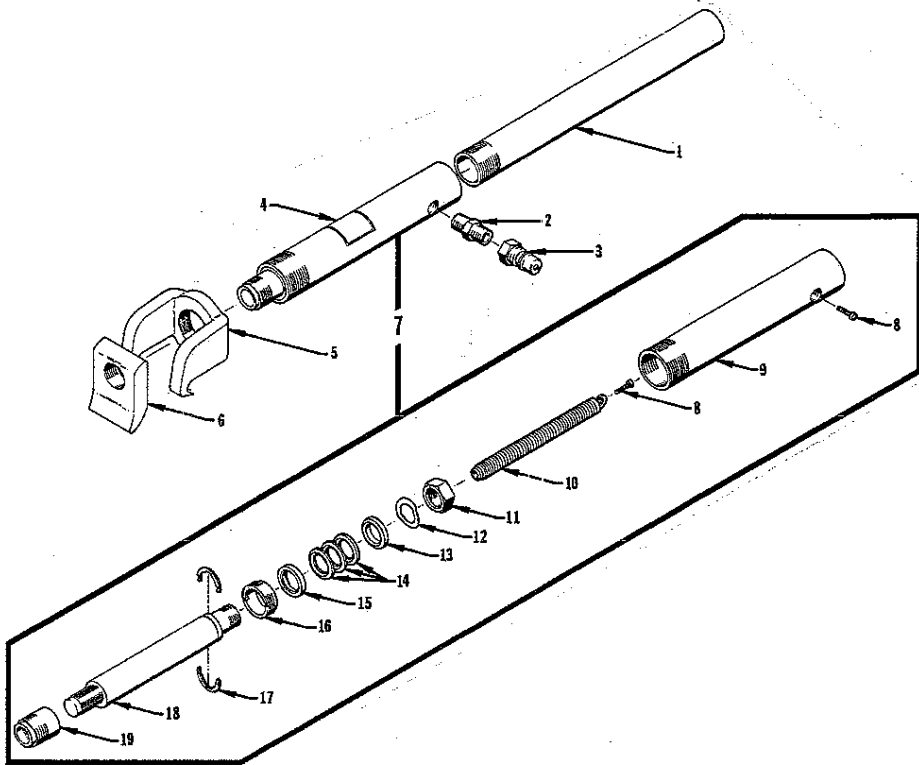
To protect the machined surfaces of the rod, it must always be stored with the ram completely retracted.



Step 1

Step 2

Step 3



Item No.	Part No.	Description	Qty	Item No.	Part No.	Description	Qty
1.	60106406	HANDLE	1	11.	72062147	NUT	1
2.	72053517	NIPPLE; 1/4" npt	1	12.	--	WASHER, wavy	*1
3.	72532287	NIPPLE, quick disconnect	1	13.	--	PLATE, packing retainer	*1
4.	70392107	DECAL, serial number	1	14.	--	PACKING	*3
5.	60106355	HOOK	1	15.	70142327	DISC	1
6.	60106359	CLAW 60025156	1	16.	70142329	RING, stop	1
7.	79075047	RAM (includes items 8 thru 19)	1	17.	--	RING, retaining	*1
8.	72601252	SCREW	2	18.	70142326	ROD with saddle (includes item 19)	1
9.	70142330	CASE	1	19.	70142325	SADDLE	1
10.	70142328	SPRING	1				

*Part of repair kit (Part Number 94074035)

CAUTION

Warranty will be void on any part of unit subjected to misuse due to overloading. When powered by an air-driven pump, the ram is capable of a force of four tons. This force, if applied at a point other than dead center on the ram, could bend the rod. Bending the rod is considered misuse due to overloading and will void the warranty on the rod.



IOWA MOLD TOOLING CO., INC.
500 HWY 18 WEST, GARNER, IA 50438

Form No. 99900150
1-6/81-100