

---

Manual # 99904953

# 47/326 Technical Specifications

Revision Date 20111214



IOWA MOLD TOOLING CO., INC.

PO Box 189

Garner, IA 50438

Tel: 641-923-3711 FAX: 641-923-2424

Website: <http://www.imt.com>

Copyright © 2011 Iowa Mold Tooling Co., Inc.  
All rights reserved

No part of this publication may be reproduced, stored in a retrieval system, or transmitted in any form or by any means, electronic, mechanical, photocopying, recording or otherwise without the prior written permission of Iowa Mold Tooling Co., Inc.

Iowa Mold Tooling Co., Inc. is an Oshkosh Corporation company.



---

# Contents

Revisions .....	ii
<b>Technical Data and Charts</b> .....	<b>3</b>
47/326 Technical Specifications .....	4
47/326 K2 Capacity Chart .....	5
47/326 K3 Capacity Chart .....	6
47/326 K4 Capacity Chart .....	7
47/326 K5 Capacity Chart .....	8
47/326 K6 Capacity Chart .....	9
47/326 K7 Capacity Chart .....	10
47/326 K8 Capacity Chart .....	11
47/326 Dimensional Drawing .....	12
47/326 Stabilizers .....	13
47/326 Swing Clearance .....	14

---

## Revisions

DATE	LOCATION	DESCRIPTION
20111214	Specifications	ECN 11628 - Updated stabilizer wording.

## CHAPTER 1

# Technical Data and Charts

## In This Chapter

47/326 Technical Specifications .....	3
47/326 K2 Capacity Chart .....	5
47/326 K3 Capacity Chart .....	6
47/326 K4 Capacity Chart .....	7
47/326 K5 Capacity Chart .....	8
47/326 K6 Capacity Chart .....	9
47/326 K7 Capacity Chart .....	10
47/326 K8 Capacity Chart .....	11
47/326 Dimensional Drawing .....	12
47/326 Stabilizers .....	13
47/326 Swing Clearance .....	14

## 47/326 Technical Specifications

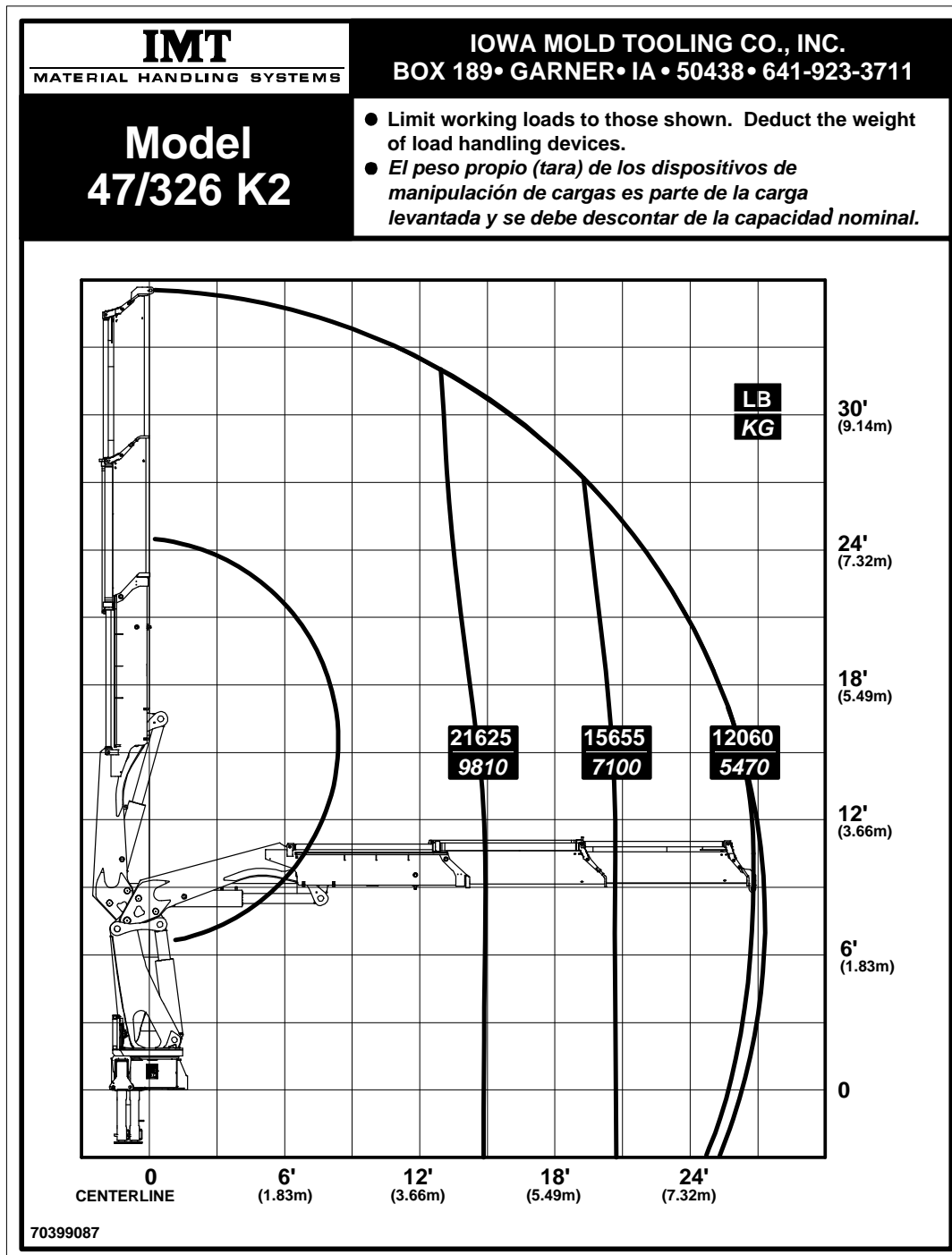
47/326	2-HYDRAULIC	3-HYDRAULIC	4-HYDRAULIC	5-HYDRAULIC	6-HYDRAULIC	7-HYDRAULIC	8-HYDRAULIC
Crane Rating*	326,210 ft lb (45.1 tm)	318,975 ft lb (44.1 tm)	316,080 ft lb (43.7 tm)	307,405 ft lb (42.5 tm)	300,170 ft lb (41.5 tm)	298,725 ft lb (41.3 tm)	291,490 ft lb (40.3 tm)
Maximum Horizontal Reach	26' 11" (8.2 m)	33' 6" (10.2 m)	40' 8" (12.4 m)	47' 3" (14.4 m)	54' 9" (16.7 m)	62' 4" (19.0 m)	70' 3" (21.4 m)
Maximum Vertical Reach	39' 8" (12.1 m)	46' 3" (14.1 m)	53' 6" (16.3 m)	60' 0" (18.3 m)	67' 7" (20.6 m)	75' 2" (22.9 m)	83' 0" (25.3 m)
Maximum Capacity	21,625 lb (9810 kg)	21,140 lb (9590 kg)	20,505 lb (9300 kg)	19,950 lb (9050 kg)	19,445 lb (8820 kg)	18,960 lb (8600 kg)	18,520 lb (8400 kg)
Max Cap @ Max Reach	12,060 lb (5470 kg)	9195 lb (4170 kg)	7165 lb (3250 kg)	5620 lb (2550 kg)	4430 lb (2010 kg)	3570 lb (1620 kg)	2865 lb (1300 kg)
Crane Weight **	7960 lb (3610 kg)	8600 lb (3900 kg)	9195 lb (4170 kg)	9745 lb (4420 kg)	10,185 lb (4620 kg)	10,580 lb (4800 kg)	10,970 lb (4975 kg)
Hook Approach							
Vertical	9' 5" (2.88 m)	9' 1" (2.78 m)	8' 11" (2.73 m)	8' 9" (2.67 m)	8' 7" (2.62 m)	8' 5" (2.56 m)	8' 3" (2.51 m)
Horizontal	4'-11" (1.5 m)	4'-11" (1.5 m)	4'-11" (1.5 m)	4'-11" (1.5 m)	4'-11" (1.5 m)	4'-11" (1.5 m)	4'-11" (1.5 m)

\* Crane rating (ft-lb) is the rated load (lb) multiplied by the respective distance (ft) from centerline of rotation with all extensions retracted and the inner and outer booms in a horizontal position, per ANSI B30.22. \*\* Crane weight does not include stabilizers.

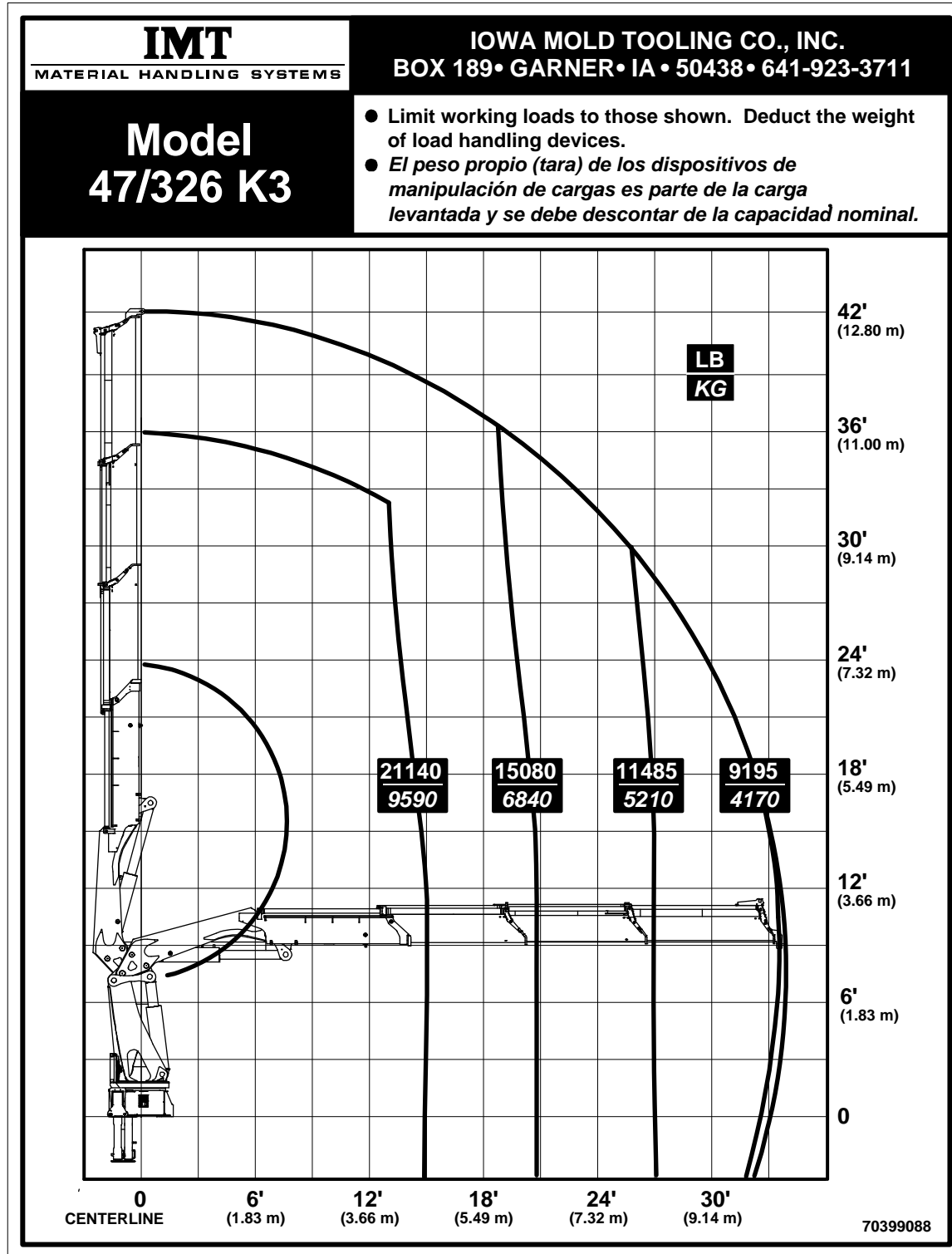
47/326 SPECIFICATIONS	
Stabilizer Pad Diameter	7.9" (200 mm)
Crane Storage Height	7' 10" (2398 mm)
Mounting Space (K2 - K6) ***	3' 11" (1198 mm)
Mounting Space (K7 - K8) ***	4' 3" (1298 mm)
Rotational Torque	36,880 ft-lb (5.1 tm)
Rotation	Continuous
Optimum Pump Performance	21-29 gpm (80-110 L/min)
System Pressure	5075 psi (350 bar)
Oil Reservoir Capacity	66.0 gal (250 L)
Stabilizer Extension Span	
Standard (hydraulic out / hydraulic down)	18' 3" (5550 mm)
Weight	815 lb (370 kg)
Option (Ext. hydraulic out / hydraulic down)	21' 1" (6430 mm)
Weight	1255 lb (570 kg)
Option (Ext. hydraulic out / hydraulic down)	25' 6" (7770 mm)
Weight	1365 lb (620 kg)
*** Maximum swing clearance radius required is 2'-7" (795 mm) at 8'-7" (2617 mm) from top of chassis frame.	

MINIMUM CHASSIS SPECIFICATIONS	
Front Axle Rating (GAWR)	20,000 lb (9070 kg)
Rear Axle Rating (GAWR)	46,000 lb (20,865 kg)
Resistance to Bending Moment	5,700,000 in-lb (656,710 kg-m)

# 47/326 K2 Capacity Chart

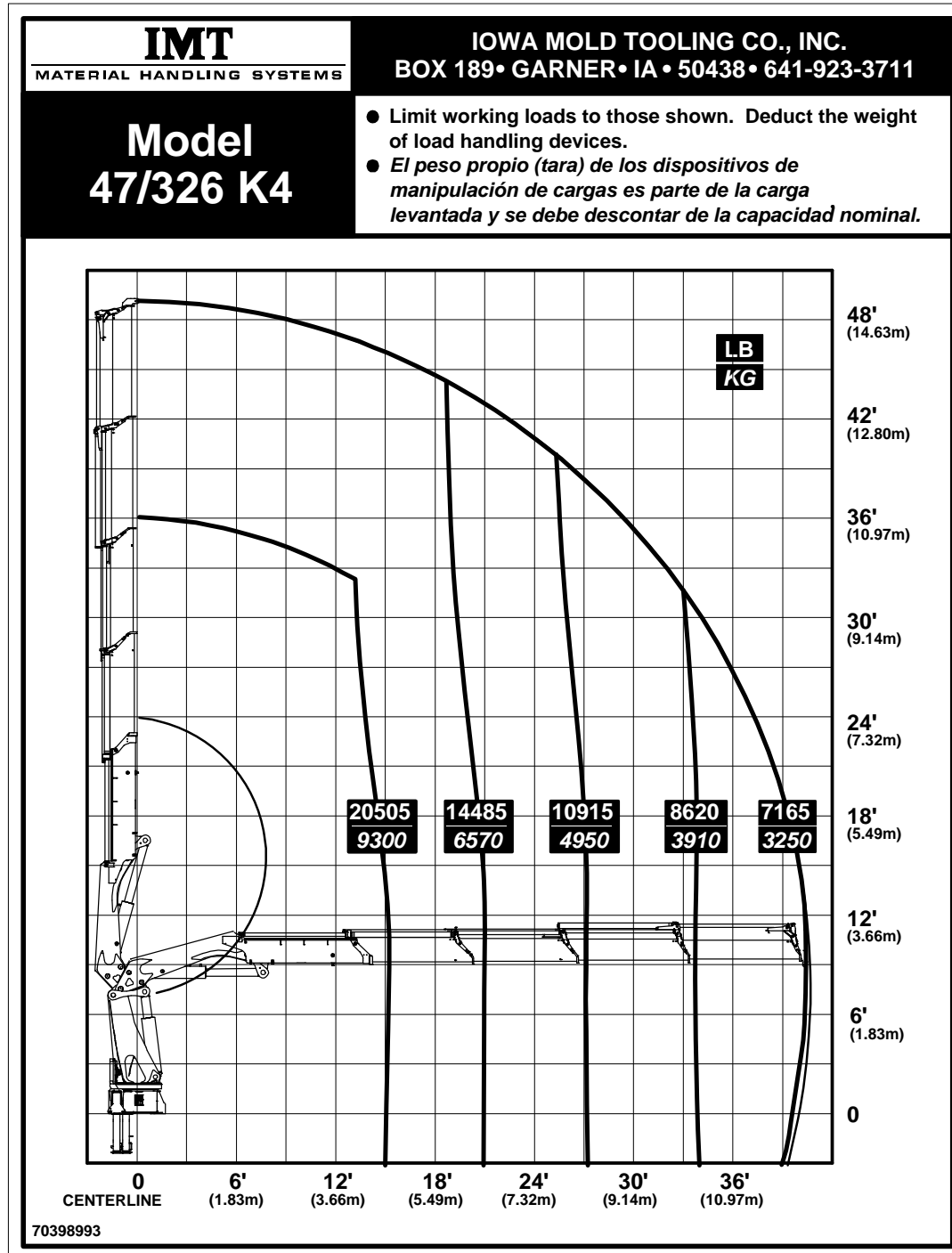


# 47/326 K3 Capacity Chart

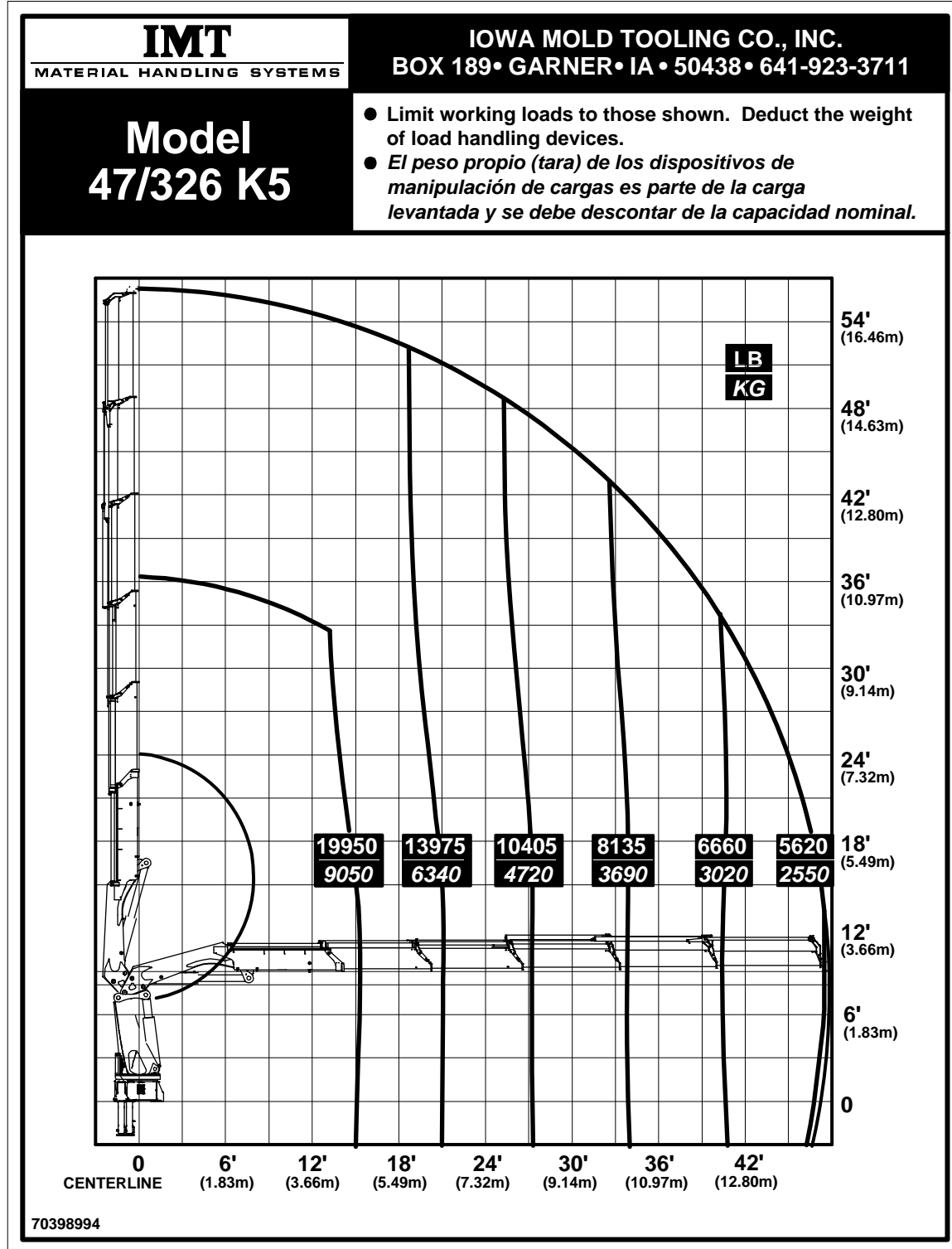




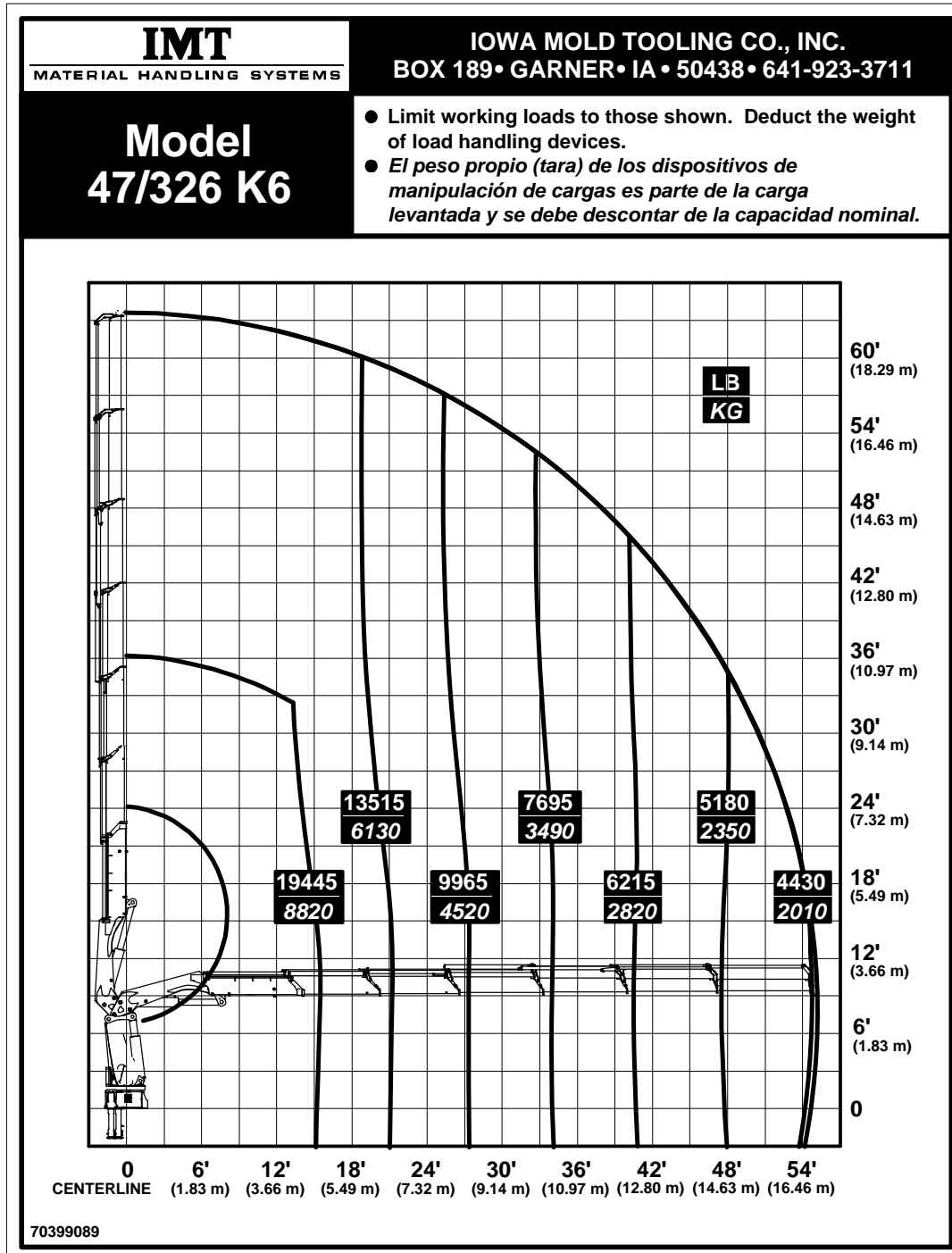
# 47/326 K4 Capacity Chart



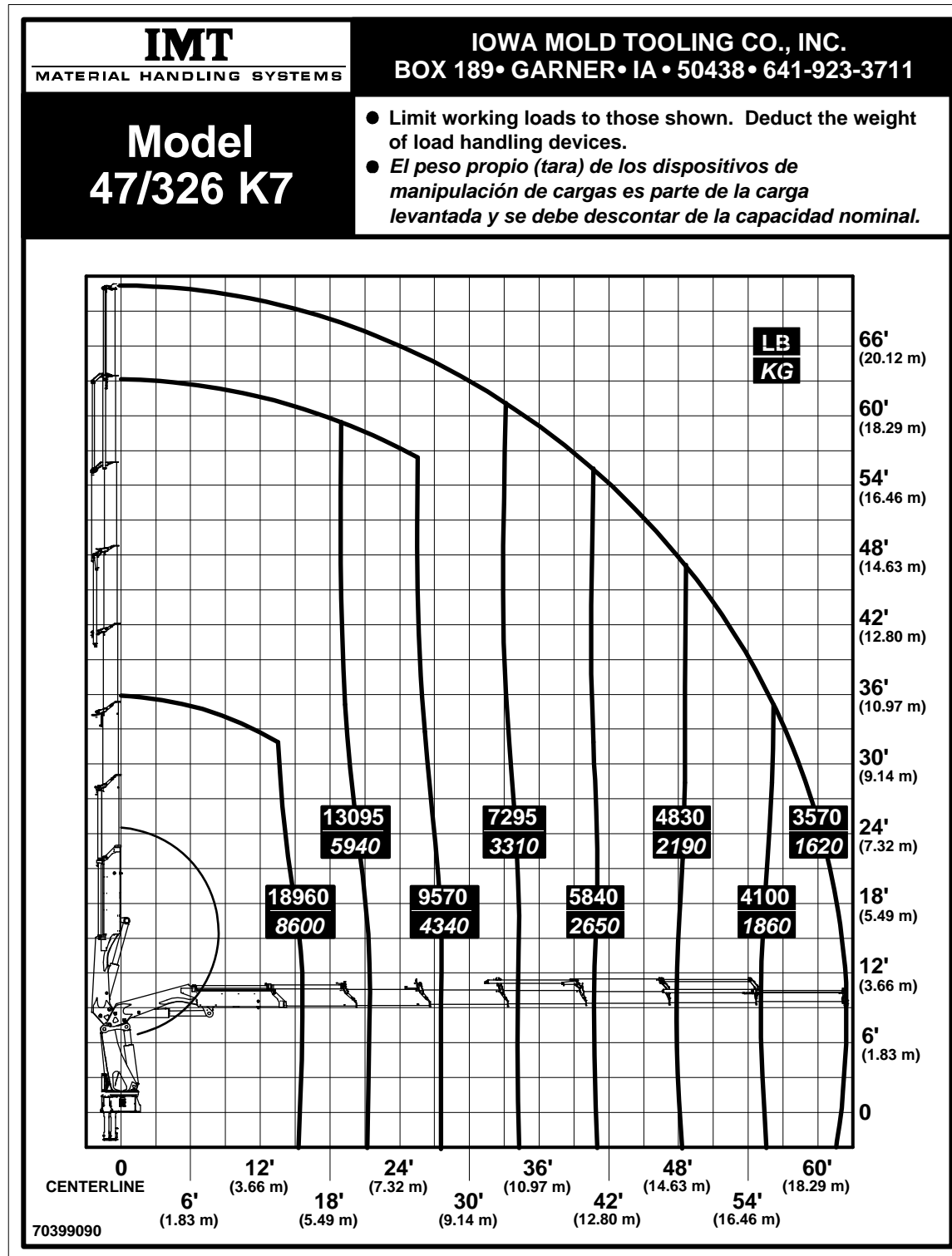
# 47/326 K5 Capacity Chart



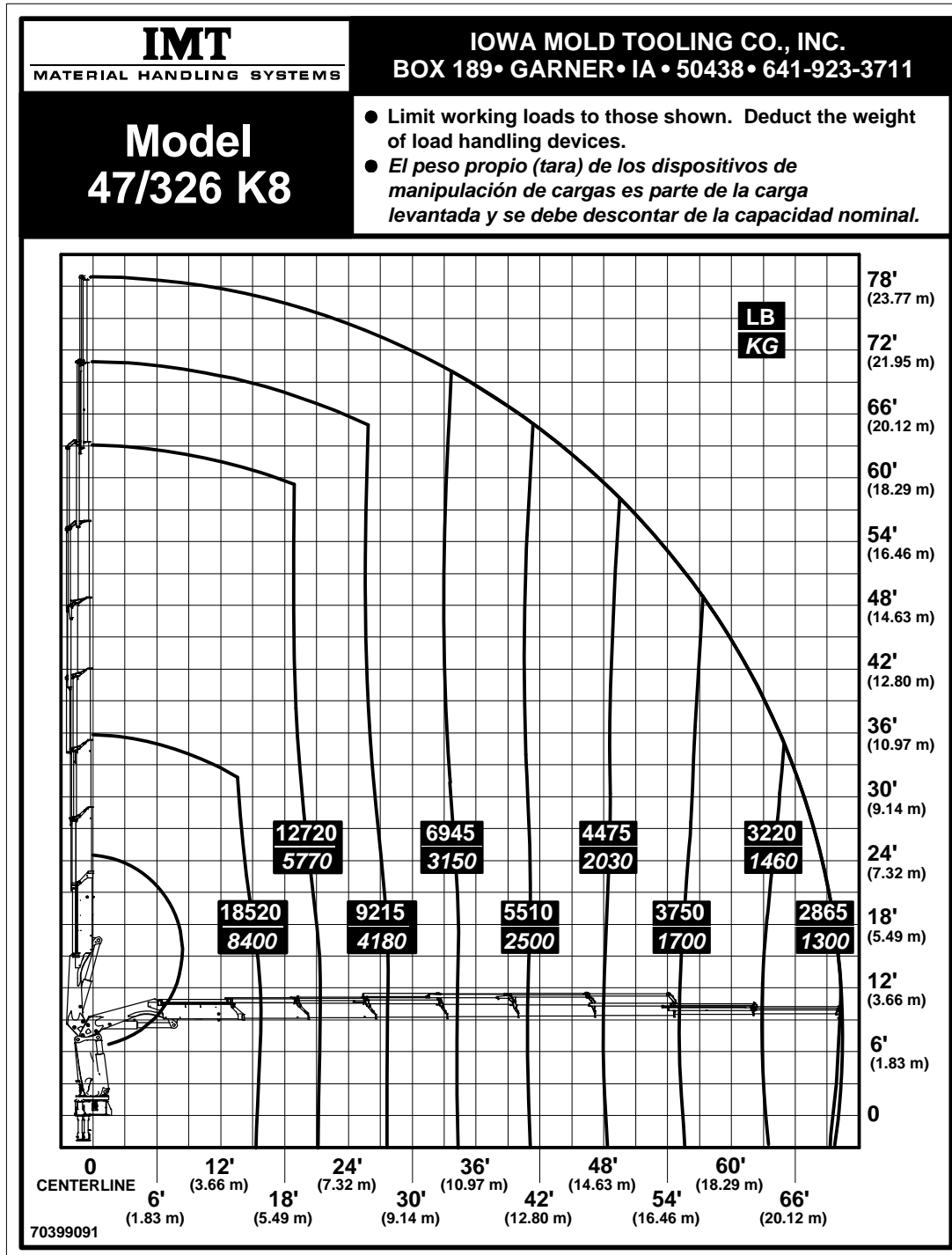
# 47/326 K6 Capacity Chart



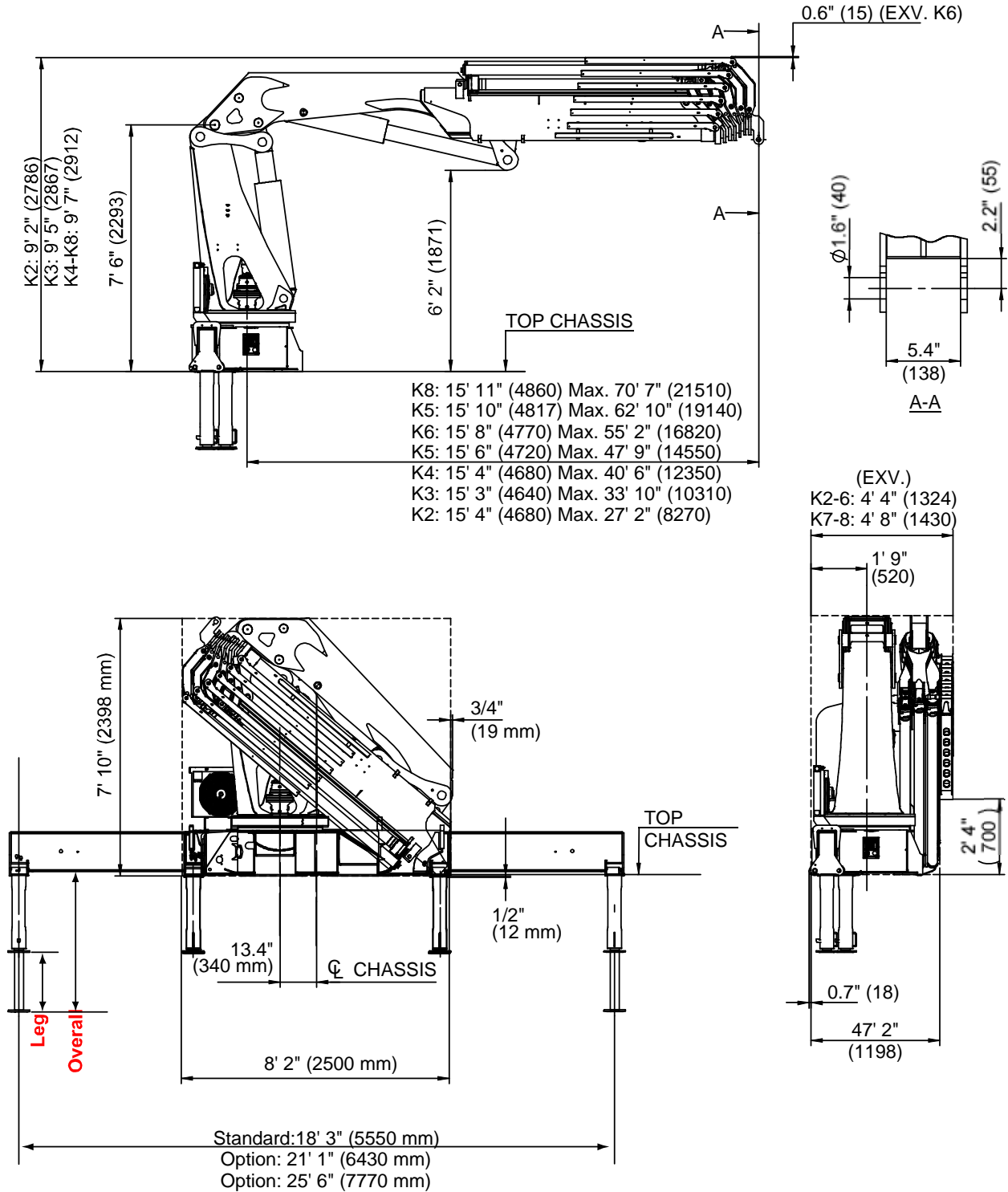
# 47/326 K7 Capacity Chart



# 47/326 K8 Capacity Chart



# 47/326 Dimensional Drawing





## 47/326 Swing Clearance

