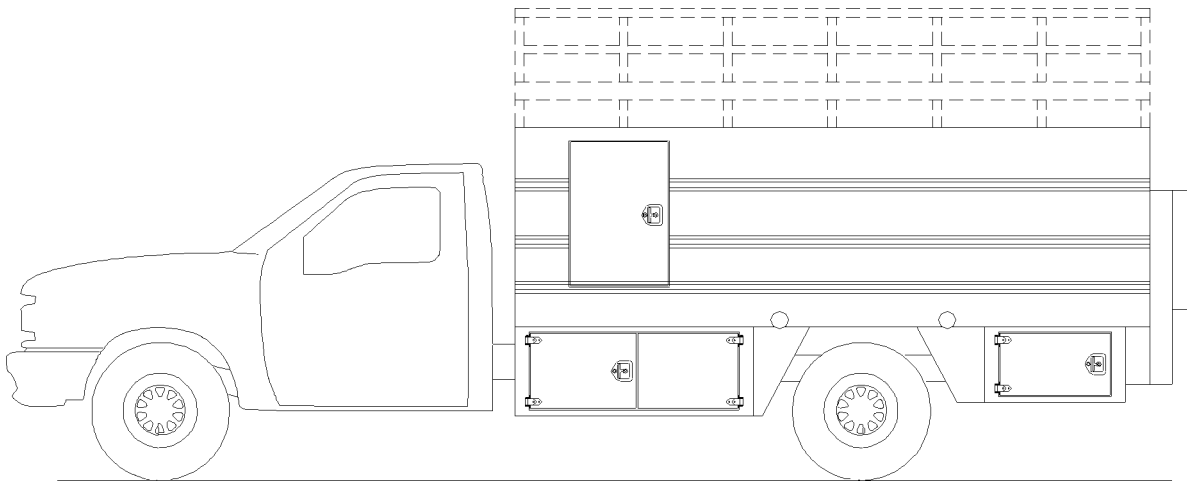




# *1999 Model 1210A ServiceStar Commercial Fleet Body*

## **PARTS AND SPECIFICATIONS**

**Section 1 BODY SPECIFICATIONS**  
**Section 2 REPLACEMENT PARTS**



**IOWA MOLD TOOLING CO., INC.**

BOX 189, GARNER, IA 50438-0189

TEL: 515-923-3711

TECHNICAL SUPPORT FAX: 515-923-2424

MANUAL PART NO: 99901207

## **PARTS ORDERING INFORMATION**

Before placing an order, take the time to record the following information. This information should then be given to an IMT representative when placing your order.

**BODY MODEL NUMBER:**

**BODY SERIAL NUMBER:**

**PART NUMBER, DESCRIPTION AND QUANTITY REQUIRED:**

**If left or right side is applicable, please specify.**

Contact IMT at the following address:

**IOWA MOLD TOOLING CO., INC.  
BOX 189, GARNER, IA 50438-0189  
TEL: 515-923-3711  
PRODUCT SUPPORT FAX: 515-923-2424**

**See Series 60 Compressor Manual  
for complete installation and operation instructions.**

## LIMITED WARRANTY

**WARRANTY COVERAGE** - Products manufactured by Iowa Mold Tooling Co., Inc. (IMT) are warranted to be free from defects in material and workmanship, under proper use, application and maintenance in accordance with IMT's written recommendations, instructions and specifications as follows:

1. Ninety (90) days; labor on IMT workmanship from the date of shipment to the end user.
2. One (1) year; original IMT parts from the date of shipment to the end user.

IMT's obligation under this warranty is limited to, and the sole remedy for any such defect shall be the repair or replacement (at IMT's option) of unaltered parts returned to IMT, freight prepaid, and proven to have such defect, provided such defect occurs within the above stated warranty period and is reported within fourteen (14) days of its occurrence.

**IMPLIED WARRANTY EXCLUDED** - This is the only authorized IMT warranty and is in lieu of all other express or implied warranties or representations, including any implied warranties of merchantability or fitness for any particular purpose or of any other obligations on the part of IMT.

**ITEMS EXCLUDED** - The manufacturer gives no warranty on any components purchased by the manufacturer, and such components as are covered only by the warranties of their respective manufacturers.

**WARRANTY CLAIMS** - Warranty claims must be submitted and shall be processed in accordance with IMT's established warranty claim procedure.

**WARRANTY SERVICE** - Warranty service will be performed by any IMT distributor authorized to sell new IMT products of the type involved or by any IMT Service Center authorized to service the type of product involved or by IMT in the event of direct sales made by IMT. At the time of requesting warranty service, the purchaser must present evidence of the date of delivery of the product. The purchaser shall pay any premium for overtime labor requested by the purchaser, any charge for making service calls and for transporting the equipment to the place where warranty work is performed.

**WARRANTY VOIDED** - All obligations of IMT under this warranty shall be terminated: (1) if service other than normal maintenance or normal replacement of service items is performed by someone other than an authorized IMT dealer, (2) if product is modified or altered in ways not approved by IMT.

**PURCHASER'S RESPONSIBILITY** - This warranty covers only defective material and workmanship. It does not cover depreciation or damage caused by normal wear, accident, improper protection in storage, or improper use. The purchaser has the obligation of performing the care and maintenance duties discussed in IMT's written recommendations, instructions and specifications. Any damage which results because of purchaser's failure to perform such duties shall not be covered by this warranty. The cost of normal maintenance and normal replacement of service items such as filters, belts, etc. shall be paid by the purchaser.

**CONSEQUENTIAL DAMAGES** - The only remedies the purchaser has in connection with the breach or performance of any warranty on IMT products are those set forth above. In no event will the dealer, IMT or any company affiliated with IMT, be liable for business interruptions, loss of sales and/or profits, rental or substitute equipment, costs of delay or for any other special, indirect, incidental or consequential losses, costs or damages.

**REPRESENTATIONS EXCLUDED** - IMT products are subject to no expressed, implied or statutory warranty other than herein set forth, and no agent, representative or distributor of the manufacturer has any authority to alter the terms of this warranty in any way whatsoever or to make any representations or promises, express or implied, as to the quality or performance of IMT products other than those set forth above.

**CHANGE IN DESIGN** - IMT reserves the right to make changes in design or improvements upon its products without imposing any obligation upon itself to install the same upon its products theretofore manufactured.

Effective January, 1985

This parts manual is provided to the user to assist in servicing the equipment. It is the property of Iowa Mold Tooling Co., Inc and, as such, may not be reproduced either whole or in part, whether by chemical, electrostatic, mechanical or photographic means without the expressed written permission of an officer of Iowa Mold Tooling Co., Inc. One manual is provided with each piece of new equipment and additional manuals may be obtained at a nominal price.



**IOWA MOLD TOOLING CO., INC.**

BOX 189, GARNER, IA 50438-0189

TEL: 515-923-3711

TECHNICAL SUPPORT FAX: 515-923-2424

The information within this manual has been compiled and checked but errors do occur. To provide our customers with a method of communicating those errors we have provided the Manual Change Request form below. In addition to error reporting, you are encouraged to suggest changes or additions to the manual which would be of benefit to you. We cannot guarantee that these additions will be made but we do promise to consider them. When completing the form, please write or print clearly. Submit a copy of the completed form to the address listed below.

## MANUAL CHANGE REQUEST

DATE	PRODUCT MANUAL	MANUAL PART NO.
SUBMITTED BY		
COMPANY		
ADDRESS		
CITY, STATE, ZIP		
TELEPHONE		

ERROR FOUND

LOCATION OF ERROR (page no.): \_\_\_\_\_

DESCRIPTION OF ERROR: \_\_\_\_\_

---



---



---



---



---



---



---



---

REQUEST FOR ADDITION TO MANUAL

DESCRIPTION OF ADDITION: \_\_\_\_\_

---



---



---

REASON FOR ADDITION: \_\_\_\_\_

---



---

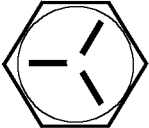



---

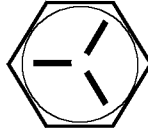

MAIL TO: IOWA MOLD TOOLING Co., Inc.  
Box 189,  
Garner IA 50438-0189  
ATTN: Technical Publications

# TORQUE DATA CHART

## FINE THREAD BOLTS

SIZE (DIA-TPI)	BOLT DIA (INCHES)	TIGHTENING TORQUE			
		 SAE J429 GRADE 5		 SAE J429 GRADE 8	
		PLAIN (FT-LB)	PLATED (FT-LB)	PLAIN (FT-LB)	PLATED (FT-LB)
5/16-24	0.3125	19	14	27	20
3/8-24	0.3750	35	26	49	35
7/16-20	0.4375	55	41	78	58
1/2-20	0.5000	90	64	120	90
9/16-18	0.5625	120	90	170	130
5/8-18	0.6250	170	130	240	180
3/4-16	0.7500	300	225	420	315
7/8-11	0.8750	445	325	670	500
1-12	1.0000	645	485	995	745
1 1/8-12	1.1250	890	670	1445	1085
1 1/4-12	1.2500	1240	930	2010	1510
1-3/8-12	1.3750	1675	1255	2710	2035
1 1/2-12	1.5000	2195	1645	3560	2670

## COARSE THREAD BOLTS

SIZE (DIA-TPI)	BOLT DIA (INCHES)	TIGHTENING TORQUE			
		 SAE J429 GRADE 5		 SAE J429 GRADE 8	
		PLAIN (FT-LB)	PLATED (FT-LB)	PLAIN (FT-LB)	PLATED (FT-LB)
5/16-18	0.3125	17	13	25	18
3/8-16	0.3750	31	23	44	33
7/16-14	0.4375	49	37	70	52
1/2-13	0.5000	75	57	105	80
9/16-12	0.5625	110	82	155	115
5/8-11	0.6250	150	115	220	160
3/4-10	0.7500	265	200	375	280
7/8-9	0.8750	395	295	605	455
1-8	1.0000	590	445	910	680
1 1/8-7	1.1250	795	595	1290	965
1 1/4-7	1.2500	1120	840	1815	1360
1-3/8-6	1.3750	1470	1100	2380	1780
1 1/2-6	1.5000	1950	1460	3160	2370

When using the torque data in the charts above, the following rules should be observed.

1. Bolt manufacturer's particular specifications should be consulted when provided.
2. Flat washers of equal strength must be used.
3. All torque measurements are given in foot-pounds. To convert to inch-pounds, multiply by 12.
4. Torque values specified are for bolts with residual oils or no special lubricants applied. If special lubricants of high stress ability, such as Never-Seez compound graphite and oil, molybdenum disulphite, colloidal copper or white lead are applied, multiply the torque values in the charts by the factor .90. The use of Loctite does not affect the torque values listed above.
5. Torque values for socket-head capscrews are the same as for Grade 8 capscrews.

### WARNING

Anytime a gear-bearing bolt is removed, it must be replaced with a new bolt of the identical grade and size. Once a bolt has been torqued to 75% of its proof load and then removed, the torque coefficient may no longer be the same as when the bolt was new thus giving indeterminate clamp loads after torquing. Failure to replace gear-bearing bolts may result in bolt failure due to metal fatigue causing serious injury or DEATH.

# IMT Value Plus PM Package Service Schedule

COMMERCIAL FLEET PACKAGES (980, 1210, 3030)

PM KIT REQUIRED: VP6160C

TYPE OF SERVICE	MONTH											
	1	2	3	4	5	6	7	8	9	10	11	12
Change DAR60P rotary screw compressor oil filter						✘						✘
Change rotary compressor oil						✘						✘
Change rotary compressor coalescer filter												✘
Change rotary compressor air filter		✘		✘		✘		✘		✘		✘
Grease rotary compressor driveline	✘	✘	✘	✘	✘	✘	✘	✘	✘	✘	✘	✘
Change moisture separator filter						✘						✘
Drain moisture from rotary compressor oil tank sump	✘	✘	✘	✘	✘	✘	✘	✘	✘	✘	✘	✘
Change liftgate hydraulic oil												✘
Start new 12 month PM chart												✘

**Daily checks** include compressor fluid levels, compressor air intake indicator, and draining of moisture separator.

**Weekly checks** include greasing of compressor driveline.

**Kit Includes:** DAR60P Rotary Screw Air Compressor filter (1), oil filter (2), compressor oil (2 changes), air filters (6), and moisture separator filter (2).

*Recommended for average equipment usage rate. Required crane and liftgate lubricants not included.*

0001210A:99901207:19990115

VI

# SECTION 1. SPECIFICATIONS

<b>GENERAL SPECIFICATIONS.....</b>	<b>3</b>
<b>COMPARTMENT SPECIFICATIONS .....</b>	<b>3</b>
<b>STANDARD FEATURES .....</b>	<b>4</b>
<b>OPTIONAL EQUIPMENT .....</b>	<b>4</b>
<b>DIMENSIONAL DRAWING.....</b>	<b>4</b>
<b>WEIGHT DISTRIBUTION-F350 .....</b>	<b>5</b>
<b>WEIGHT DISTRIBUTION-F450 .....</b>	<b>6</b>





# 1999 Model 1210A ServiceStar Commercial Fleet Body

## GENERAL SPECIFICATIONS

	<b>STANDARD</b>	
CHASSIS CAB-TO-AXLE (CA)	84"	213.4 cm
CHASSIS GVWR	15,000 lbs	6805 kgs
BODY CUBIC CAPACITY	268 cubic feet	7.59 cubic meters
TIRE HAULING CAPACITY	Twenty-four 11R24.5 Two 33.25-29	Twenty-four 11R24.5 Two 33.25-29
AVAILABLE PAYLOAD	6250 lbs	2835 kgs
LIFTGATE CAPACITY	1600 lbs	725 kgs

## COMPARTMENT SPECIFICATIONS

LEFT FRONT LOWER UBTB	20"H X 54"W X 20"D 12.50 cubic feet	50.8x137.2x50.8cm .35 cubic meters
LEFT & RIGHT FRONT UPPER COMPARTMENT	41"H X 35"W X 24"D 19.93 cubic feet	104.1x88.9x61.0cm .56 cubic meters
RIGHT FRONT LOWER UBTB	20"H X 54"W X 20"D 12.50 cubic feet	50.8x137.2x50.8cm .35 cubic meters
LEFT REAR COMPARTMENT	17"H X 32"W X 20"D 6.30 cubic feet	43.2x81.3x50.8cm .18 cubic meters
RIGHT REAR COMPARTMENT	17"H X 32"W X 20"D 6.30 cubic feet	43.2x81.3x50.8cm .18 cubic meters

Note: Dimensions of compartments are nominal.



**IOWA MOLD TOOLING CO., INC.**

BOX 189, GARNER, IA 50438-0189

TEL: 515-923-3711

TECHNICAL SUPPORT FAX: 515-923-2424

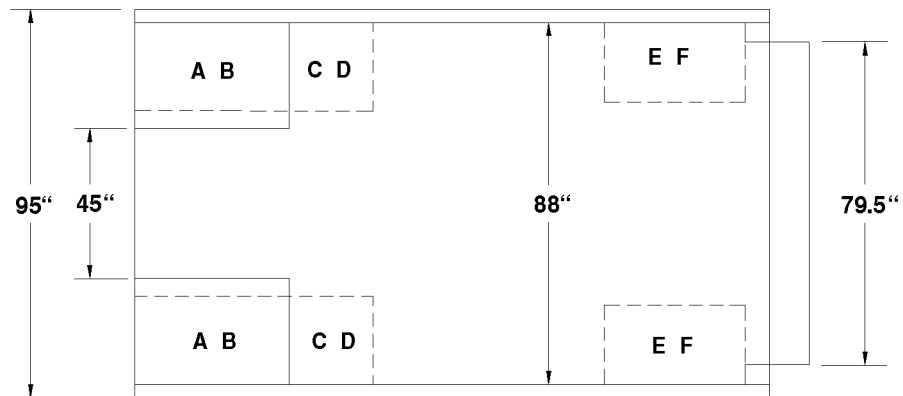
## STANDARD FEATURES

- 1/2" x 50' hose reel.
- Amber beacon light.
- Two 12V floodlights.
- Four compartment lights.
- Back-up alarm.
- An ICC safety kit.
- Hour meter

## OPTIONAL EQUIPMENT

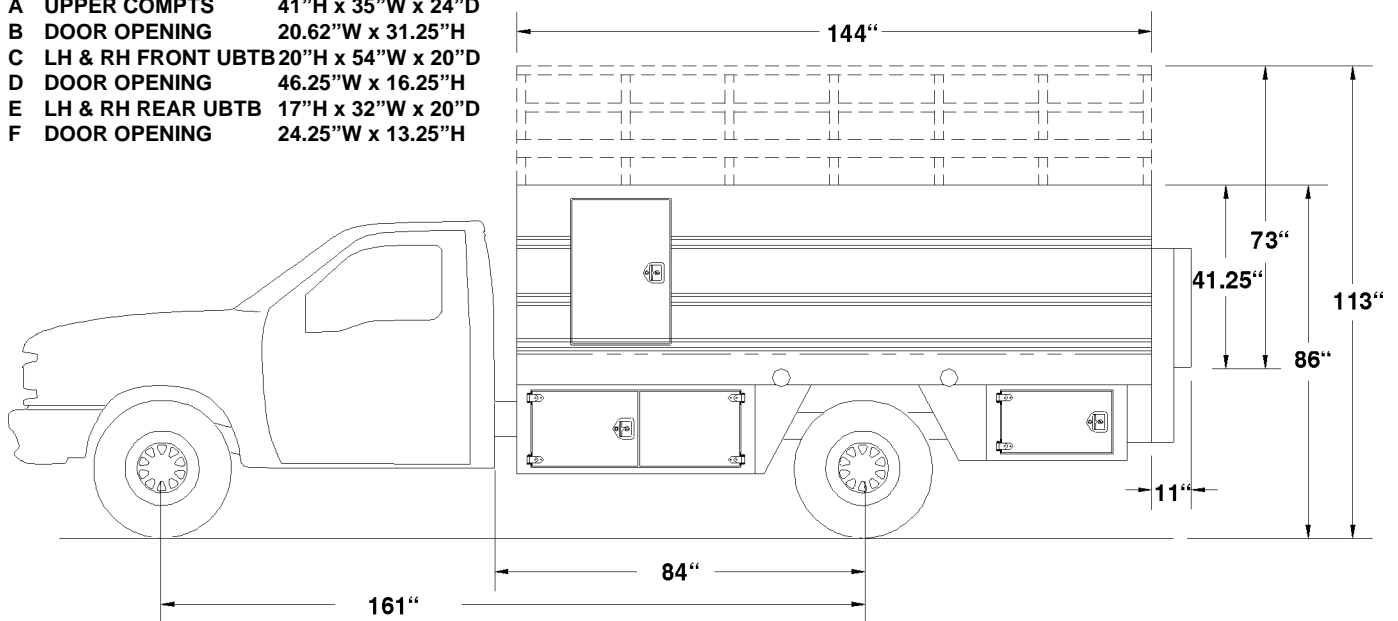
- Cab caddy.
- 3/8" x 35' hose reel.
- Commercial fleet tool package.
- Dual 1/2" airline coupler plumbing.
- 300-gallon portable calcium chloride skid.
- Liftgate side rail and tire stop.
- Two-bar fold-up tire inflation cage with body installed carrying bracket and 6' inflation hose.
- Customer identification.

IMT reserves the right to change specifications and design without notice.



## LEGEND

A	UPPER COMPTS	41"H x 35"W x 24"D
B	DOOR OPENING	20.62"W x 31.25"H
C	LH & RH FRONT UBTB	20"H x 54"W x 20"D
D	DOOR OPENING	46.25"W x 16.25"H
E	LH & RH REAR UBTB	17"H x 32"W x 20"D
F	DOOR OPENING	24.25"W x 13.25"H



# WEIGHT DISTRIBUTION

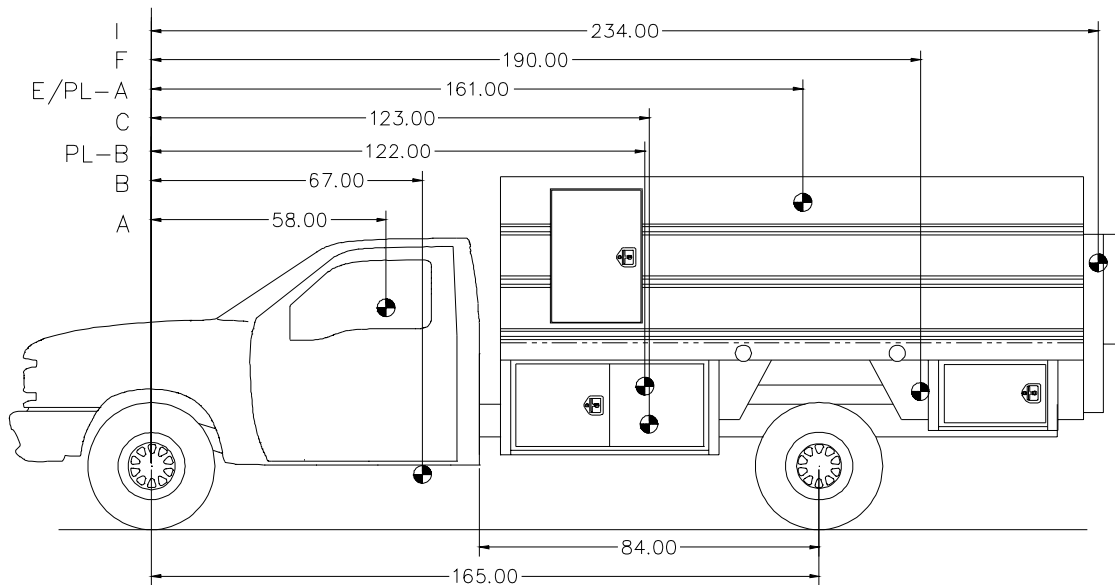
## 1210A ServiceStar

### Commercial Fleet Series

### F350

CHASSIS MODEL	F350
CHASSIS MODEL YEAR	1999
CHASSIS MANUFACTURER	FORD
WHEELBASE	165"
CAB-TO-AXLE	84"
GVWR (LBS)	12500
FRONT AXLE RATING (LBS)	4850
REAR AXLE RATING (LBS)	8600

LOCATION	COMPONENT DESCRIPTION	TOTAL WEIGHT (LBS)	WEIGHT FRONT AXLE (LBS)	WEIGHT REAR AXLE (LBS)
	CHASSIS WEIGHT - STD EQUIP/OIL/WATER	5970	3770	2200
E	1210A SERVICESTAR BODY	1113	27	1086
I	LOADGATE	690	-289	979
B	DAR60P COMP+PTO	247	147	100
C	0.5"X50' HOSEREEL	55	14	41
	ASSEMBLY HARDWARE	145	17	128
	<b>SUBTOTAL</b>	<b>8220</b>	<b>3686</b>	<b>4534</b>
	TOTAL REMAINING GVW	4280	1164	4066
PL-A	CARGO PAYLOAD AT SPECIFIED LOCATION	2413	58	2355
PL-B	CUSTOMER SUPPLIED TOOLS	260	68	192
F	REAR FUEL TANK - 38 GALLONS	252	-38	290
A	DRIVER	250	162	88
	REMAINING PAYLOAD	1105	564	541
	<b>TOTAL UNIT WEIGHT - WITH SPECIFIED LOAD</b>	<b>12500</b>	<b>4500</b>	<b>8000</b>



# WEIGHT DISTRIBUTION

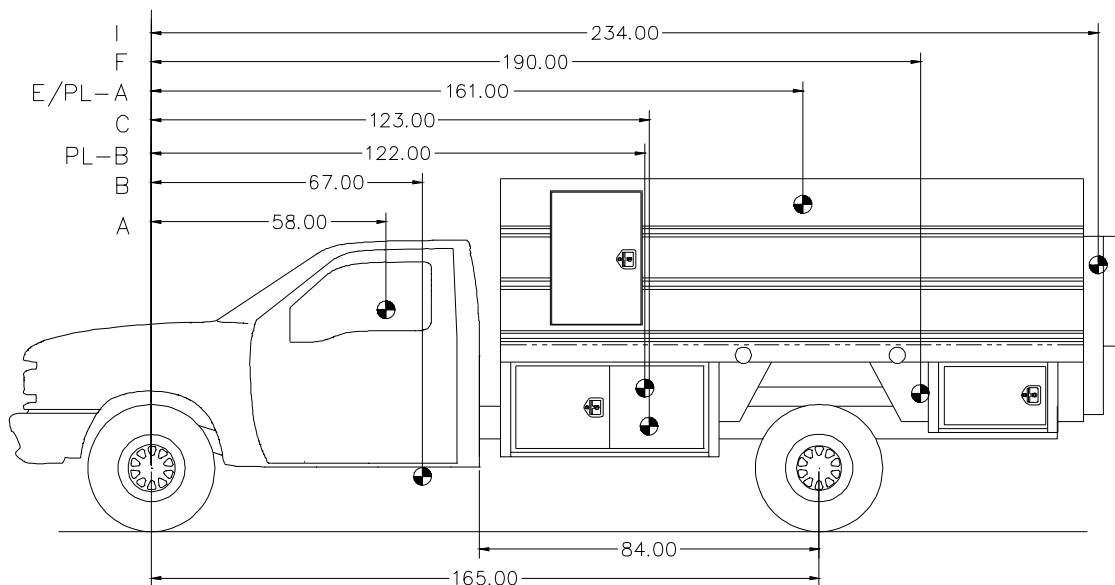
## 1210A ServiceStar

### Commercial Fleet Series

### F450

CHASSIS MODEL	F450
CHASSIS MODEL YEAR	1999
CHASSIS MANUFACTURER	FORD
WHEELBASE	165"
CAB-TO-AXLE	84"
GVWR (LBS)	15000
FRONT AXLE RATING (LBS)	5790
REAR AXLE RATING (LBS)	10880

LOCATION	COMPONENT DESCRIPTION	TOTAL WEIGHT (LBS)	WEIGHT FRONT AXLE (LBS)	WEIGHT REAR AXLE (LBS)
	CHASSIS WEIGHT - STD EQUIP/OIL/WATER	6650	4010	2640
E	1210A SERVICESTAR BODY	1113	27	1086
I	LOADGATE	690	-289	979
B	DAR60P COMP+PTO	247	147	100
F	0.5"X50' HOSEREEL	55	14	41
	ASSEMBLY HARDWARE	145	17	128
	<b>SUBTOTAL</b>	<b>8900</b>	<b>3926</b>	<b>4974</b>
	TOTAL REMAINING GVW	6100	1864	5906
PL-A	CARGO PAYLOAD AT SPECIFIED LOCATION	2413	58	2355
PL-B	CUSTOMER SUPPLIED TOOLS	260	68	192
F	REAR FUEL TANK - 38 GALLONS	252	-38	290
A	DRIVER	250	162	88
	REMAINING PAYLOAD	2925	824	2101
	<b>TOTAL UNIT WEIGHT - WITH SPECIFIED LOAD</b>	<b>15000</b>	<b>5000</b>	<b>10000</b>



## SECTION 2. REPLACEMENT PARTS

BODY ASM W/SERIES 60 COMPRESSOR (41714862-1) .....	3
BODY ASM W/ SERIES 60 COMPRESSOR (41714862-2) .....	4
BODY ASM W/ SERIES 60 COMPRESSOR (41714862-3) .....	5
BODY ASM W/ SERIES 60 COMPRESSOR (41714862-4) .....	6
DOOR & HINGE COMPONENTS (REF: 52714269) .....	7
CHASSIS PREP-BODY W/ SERIES 60 COMPRESSOR-'99 FORD CHASSIS (41714854-1) .....	8
CHASSIS PREP-BODY W/ SERIES 60 COMPRESSOR-'99 FORD CHASSIS (41714854-2) .....	9
INSTALLATION-BODY W/SERIES 60 COMPRESSOR-'99 FORD CHASSIS (41714856) .....	10
DRIVESHAFT ASM (70008W) .....	11
ELECTRICAL INSTALLATION-BODY W/SERIES 60 COMPRESSOR (41714861-1) .....	12
ELECTRICAL INSTALLATION-BODY W/SERIES 60 COMPRESSOR (41714861-2) .....	13
ELECTRICAL INSTALLATION-BODY W/SERIES 60 COMPRESSOR (41714861-3) .....	14
ELECTRICAL INSTALLATION-BODY W/SERIES 60 COMPRESSOR (41714861-4) .....	15
ELECTRICAL INSTALLATION-BODY W/SERIES 60 COMPRESSOR (41714861-5) .....	16
CONTROL BOX (51713793) .....	17
DECAL KIT (95714891) .....	18
INSTALLATION KIT-1999 FORD 84" CA (93714833) .....	19
CHASSIS PREP-99 FORD/AT W/ SERIES 60 COMPRESSOR (41715508-1) .....	20
CHASSIS PREP-99 FORD/AT W/ SERIES 60 COMPRESSOR (41715508-2) .....	21

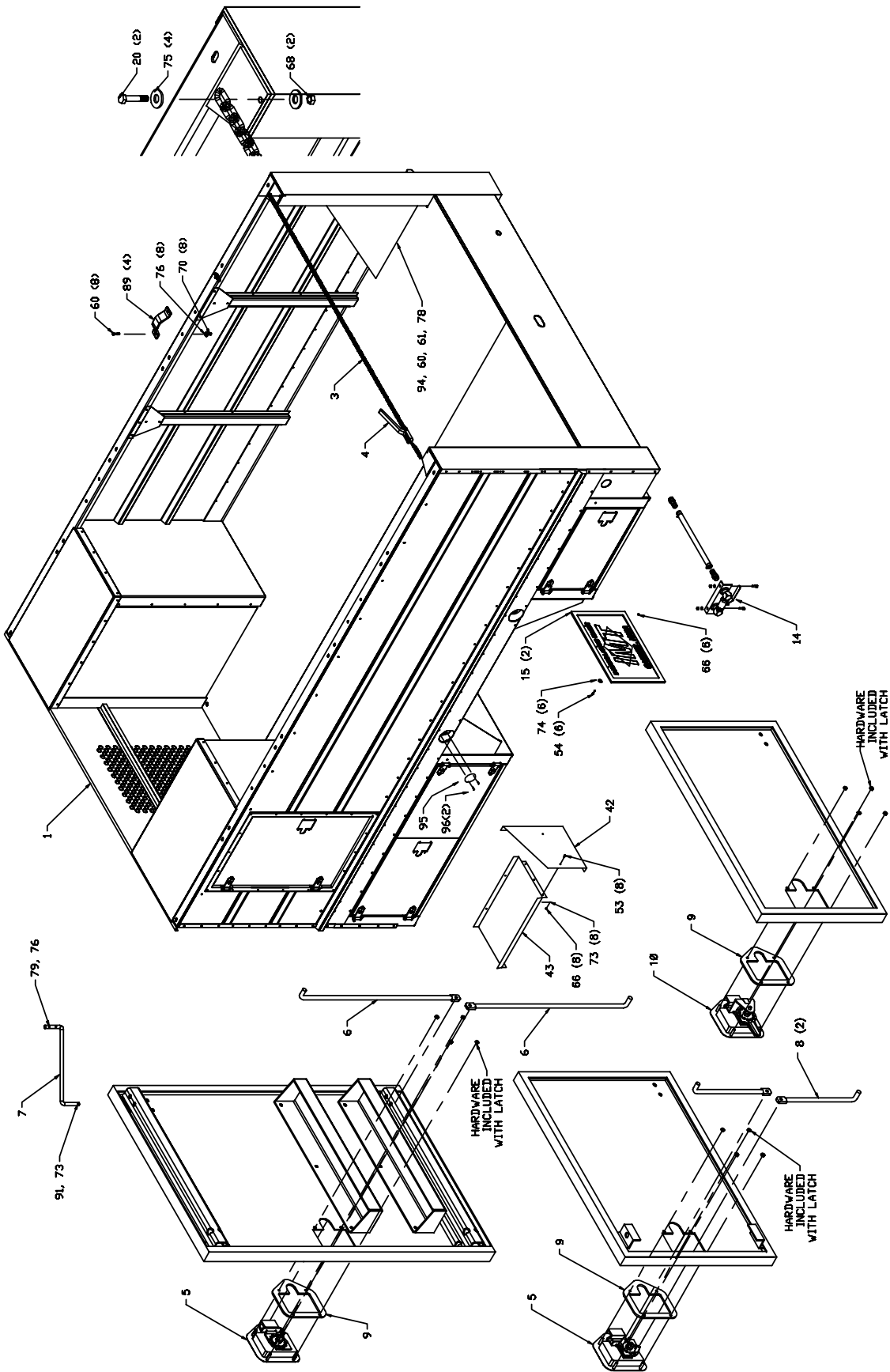


**BODY ASM W/SERIES 60 COMPRESSOR  
(41714862-1)**

CONTINUED ON FOLLOWING PAGE

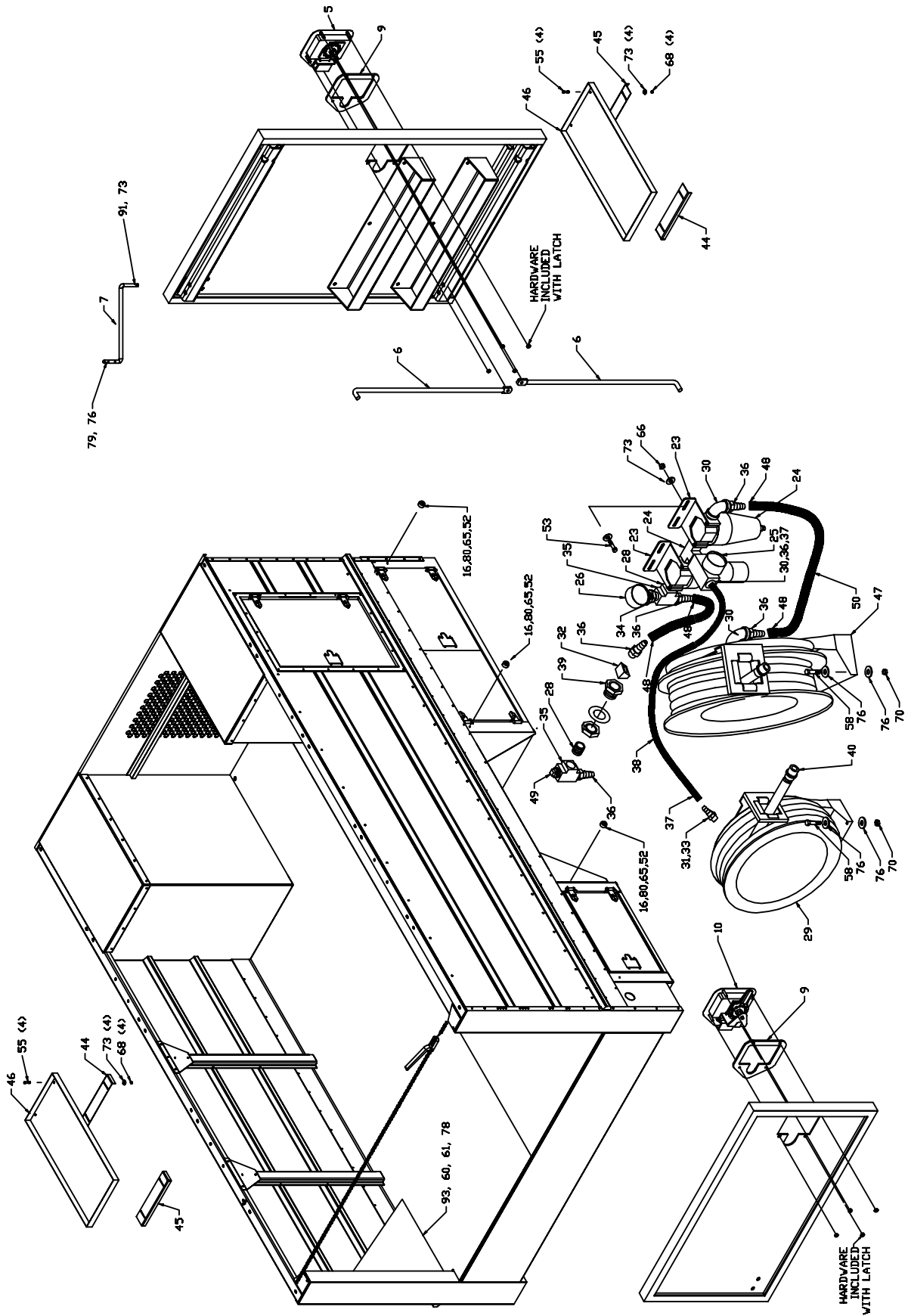
ITEM	PART NO.	DESCRIPTION	QTY
1.	52714269	BODY	1
2.	70733154	LOADGATE	1
3.	60109068	CHAIN	1
4.	52706007	CHAIN BINDER	1
5.	72661466	LATCH 2PT W/STUDS	4
6.	60110127	DOOR ROD 16-1/8	4
7.	60110183	DOOR ROD 7	2
8.	60117857	DOOR ROD 8.50	4
9.	76393253	LATCH GASKET	6
10.	72661470	LATCH-SGL PT	2
11.	52706335	SIDE RAIL	1
12.	52706337	TIRE STOP	1
13.	76391172	GROMMET	1
14.	51709358	DRAIN ASM	1
15.	76393799	MUD FLAP	2
16.	76039990	RUBBER BUMPER	6
17.	70393719	PLUG	14
18.	70034366	PLUG	8
19.	72531132	ST ELBOW 3/8NPT 90° STL	1
21.	70029119	SERIAL NO. PLACARD	1
22.	89393607	WEATHERSTRIP	56FT
23.	70141473	MTG BRKT	2
24.	70073439	SEP-REG-OILER ASM	1
25.	70048015	AIR PR GAUGE 300PSI CTRMT	1
26.	70048036	AIR PR GAUGE 300PSI BTMMT	1
27.	72532733	PIPE NIPPLE 1/4NPT X CL BRS	1
28.	72533022	PIPE NIPPLE 1/2NPT X CL BRS	2
29.	70073625	HOSE REEL 3/8X35'	1
30.	72531133	ST ELBOW 1/2NPT 90° STL	3
31.	72053590	STREET ELBOW 3/8NPT 90°	1
32.	72053522	ST ELBOW 1/2NPT 45° STL	1
33.	72531543	BARB NIPPLE 3/8MPT 1/2	1
34.	72531812	REDUCER BUSHING 1/2-1/4NPT	1
35.	72053612	TEE 1/2NPT STL	2
36.	72531547	BARB NIPPLE 1/2MPT 3/4HOSE	3
37.	72066061	HOSE CLAMP SAE#6	2
38.	89039176	AIR HOSE 1/2 250PSI	3FT
39.	72533140	BULKHD COUPLING 1/2X1-1/2	1
40.	72532021	QUICK DISCONNECT 1/4FPT	1
41.	72532022	QUICK DISCONNECT 1/2FPT	1
42.	60025480	DIVIDER	1
43.	60025483	SHELF	1
44.	60110262	END-ADJ SHELF-LH	2
45.	60110263	END-ADJ SHELF-RH	2
46.	60114616	SHELF 15X34	2
47.	70732095	HOSE REEL	1
48.	72060000	HOSE CLAMP 1/2 1-1/4 SAE#12	4
49.	72053404	PIPE PLUG 1/2SH GV	1
50.	89392349	HOSE 3/4X300PSI	6FT
51.	60250360	PANEL	1
52.	72601552	CAP SCR #10-24X1 TRHPH	6
53.	72060002	CAP SCR 1/4-20X3/4 HHGR5	4
54.	72060004	CAP SCR 1/4-20X1 HHGR5	19
55.	72060025	CAP SCR 5/16-18X1 HHGR5	2
56.	72060034	CAP SCR 5/16-18X3-1/4 HHGR5	4
57.	72060033	CAP SCR 5/16-18X3 HHGR5	4
58.	72060046	CAP SCR 3/8-16X1 HHGR5	12
59.	72060093	CAP SCR 1/2-13X1-1/2 HHGR5	2
60.	72060047	CAP SCR 3/8-16X1-1/4 HHGR5	4
61.	72060056	CAP SCR 3/8-16X4 HHGR5	4
62.	72060094	CAP SCR 1/2-13X1-3/4 HHGR5	4
63.	72601342	CAP SCR 5/16-18X1-1/2 HH SS	2
64.	72060046	CAP SCR 3/8-16X1 HHGR5	8
65.	72062123	NUT #10-24 LOCK SS	6
66.	72062104	NUT 1/4-20 LOCK	37
67.	72062194	NUT 1/4-20 LOCK SS	18
68.	72062109	NUT 5/16-18 LOCK	14
69.	72062167	NUT 5/16-18 LOCK SS	2
70.	72062103	NUT 3/8-16 LOCK ZINC	4
71.	72062197	NUT 3/8-16 LOCK SS	8
72.	72062080	NUT 1/2-13 LOCK	4
73.	72063001	WASHER 1/4 WRT	26
74.	72661471	WASHER 1/4X1 OD FENDER	6
75.	72063002	WASHER 5/16 WRT	12
76.	72063003	WASHER 3/8 WRT	14
77.	72063004	WASHER 7/16 WRT	6
78.	72063005	WASHER 1/2 WRT	18
79.	72063118	WASHER 3/8X1-1/4 ODX18GA	2
80.	72063123	WASHER #10 WRT	6
81.	72063152	WASHER 5/16 WRT SS	6
82.	72063165	WASHER 3/8 FLAT SS	16
83.	72063166	WASHER 1/4 WRT SS	14
85.	72066349	POP RIVET .19X.50GRIP	14
86.	72066340	POP RIVET .12X.375GRIP	2
89.	60025114	LIFT BRACKET	4
91.	72066141	HAIR PIN 1/16	2
92.	72066168	COTTER PIN .09X3/4	2
93.	60115432	MTG BRKT LH	1
94.	60115433	MTG BRKT RH	1
95.	60109513	COVER PLATE	1
96.	72060636	MACH SCR #10-24X3/4 RDHD	2
97.	60030309	WEAR PAD	2
98.	72060025	CAP SCR 5/16-18X1 HHGR5	6
99.	72063002	WASHER 5/16 WRT	6
100.	72062109	NUT 5/16 LOCK	6

CONTINUED ON FOLLOWING PAGE

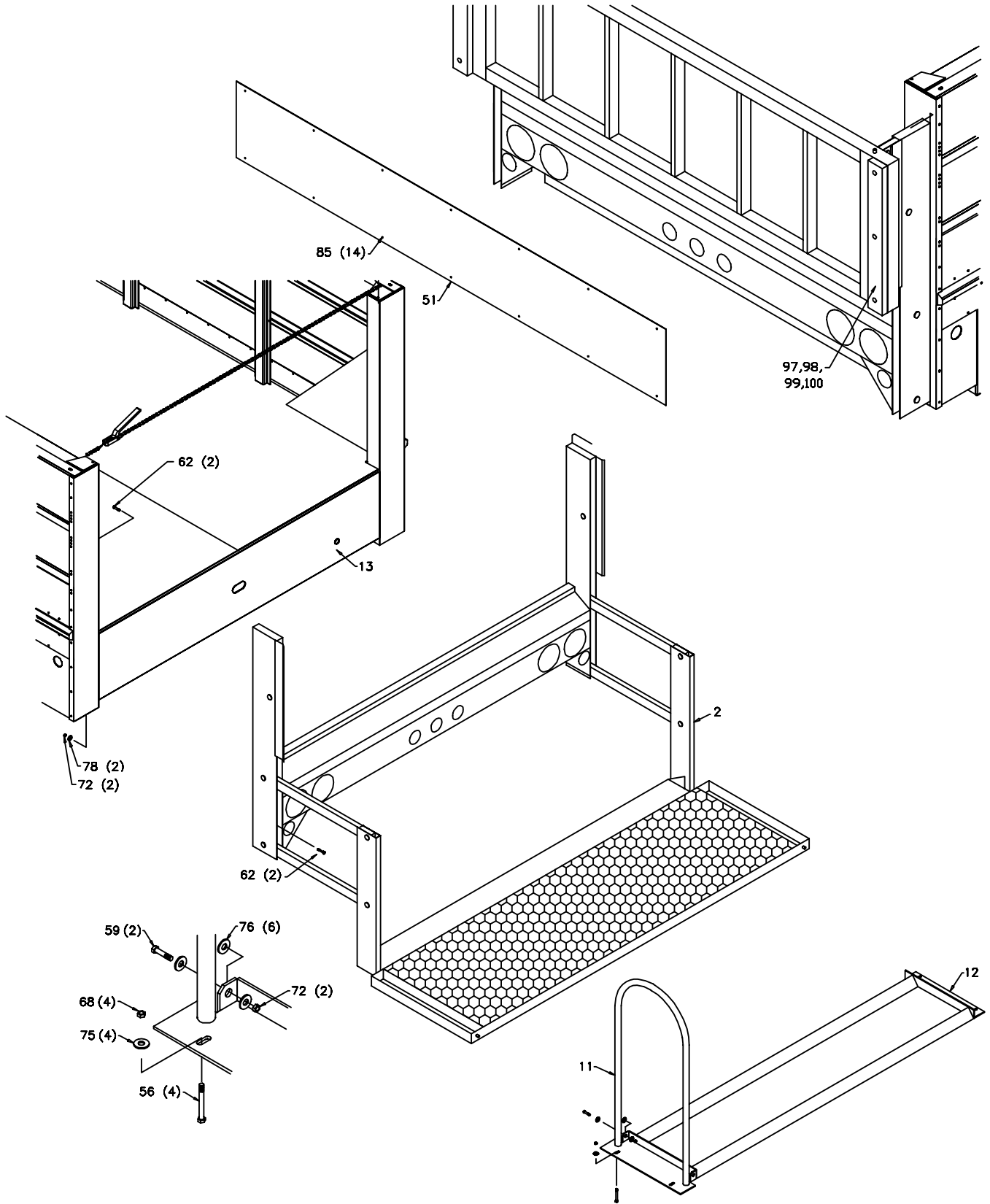




CONTINUED ON FOLLOWING PAGE

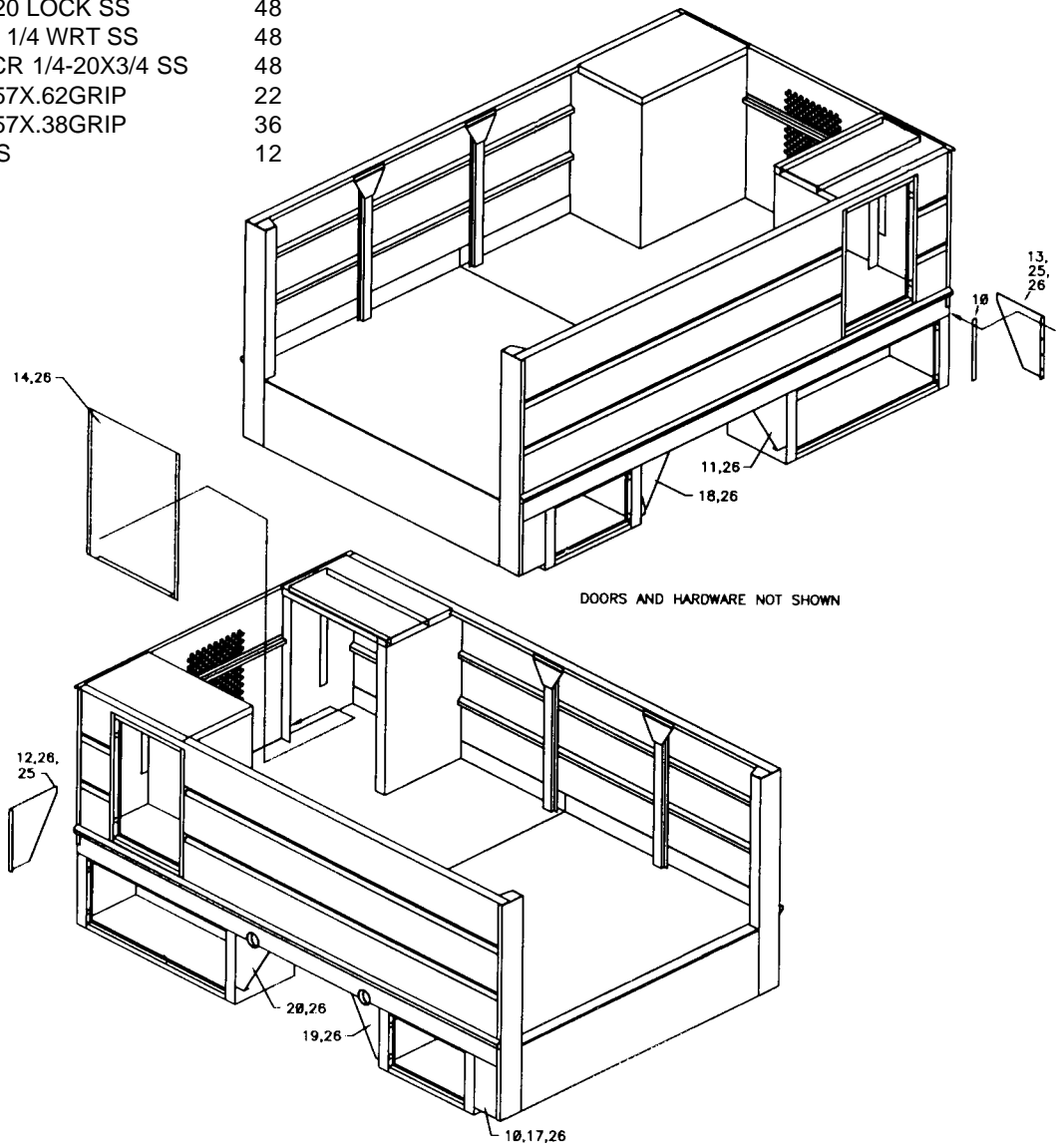


**BODY ASM W/ SERIES 60 COMPRESSOR (41714862-4)**



**DOOR & HINGE COMPONENTS (REF: 52714269)**

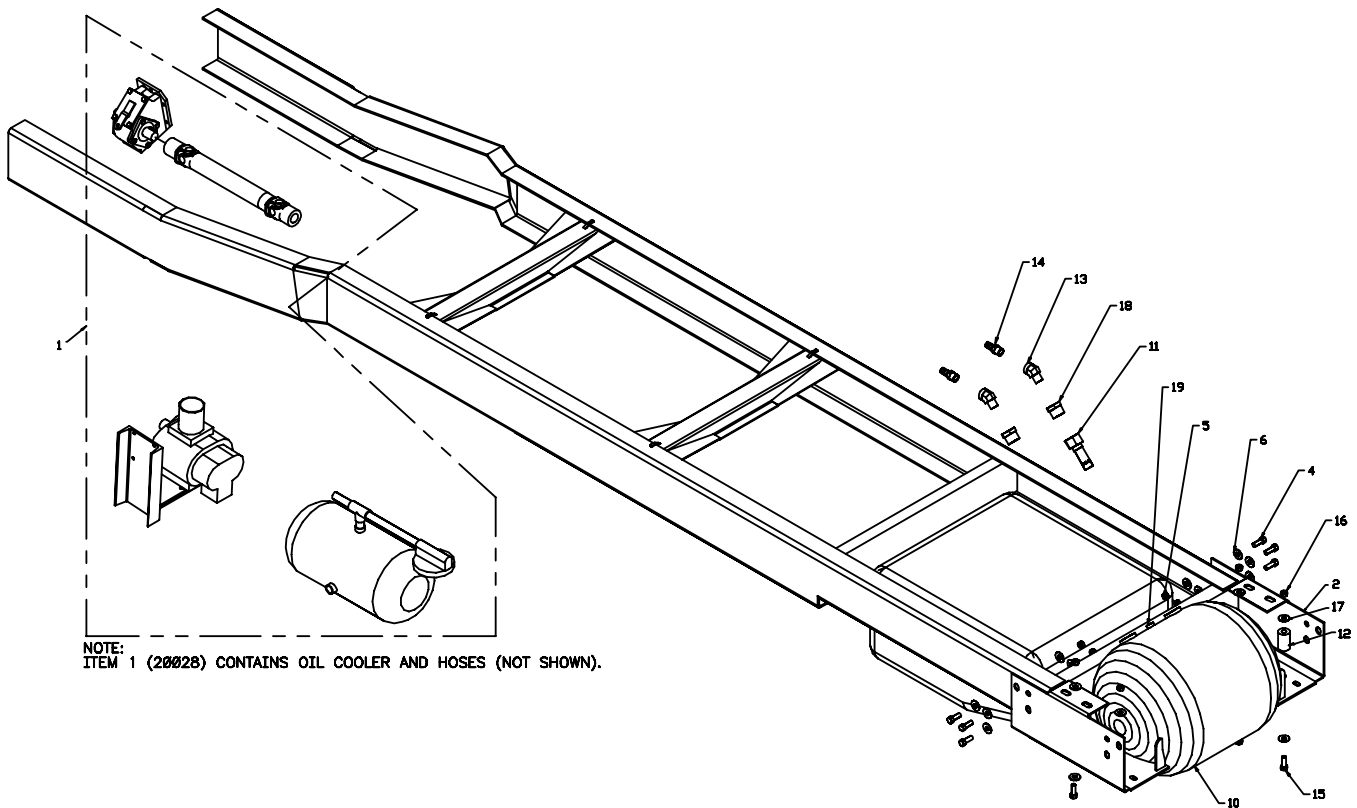
ITEM	PART NO.	DESCRIPTION	QTY
7.	52712035	DOOR 14HX25W	2
8.	52712037	DOOR 17HX24W	2
9.	52712038	DOOR 17HX22-5/8W	2
10.	60025328	SPACER	4
11.	60025340	SKIRT	1
12.	60025351	PANEL-LEFT FRONT	1
13.	60025352	PANEL-RIGHT FRONT	1
14.	60025358	BACK-RH COMPT	1
17.	60025929	PANEL-SIDE SPACER-REAR	2
18.	60025930	SKIRT	1
19.	60025964	SKIRT	1
20.	60025965	SKIRT	1
22.	72062194	NUT 1/4-20 LOCK SS	48
23.	72063166	WASHER 1/4 WRT SS	48
24.	72601652	MACH SCR 1/4-20X3/4 SS	48
25.	72661225	RIVET .257X.62GRIP	22
26.	72661226	RIVEL .257X.38GRIP	36
27.	72661383	HINGE-SS	12



**CHASSIS PREP-BODY W/ SERIES 60  
COMPRESSOR-'99 FORD CHASSIS  
(41714854-1)**

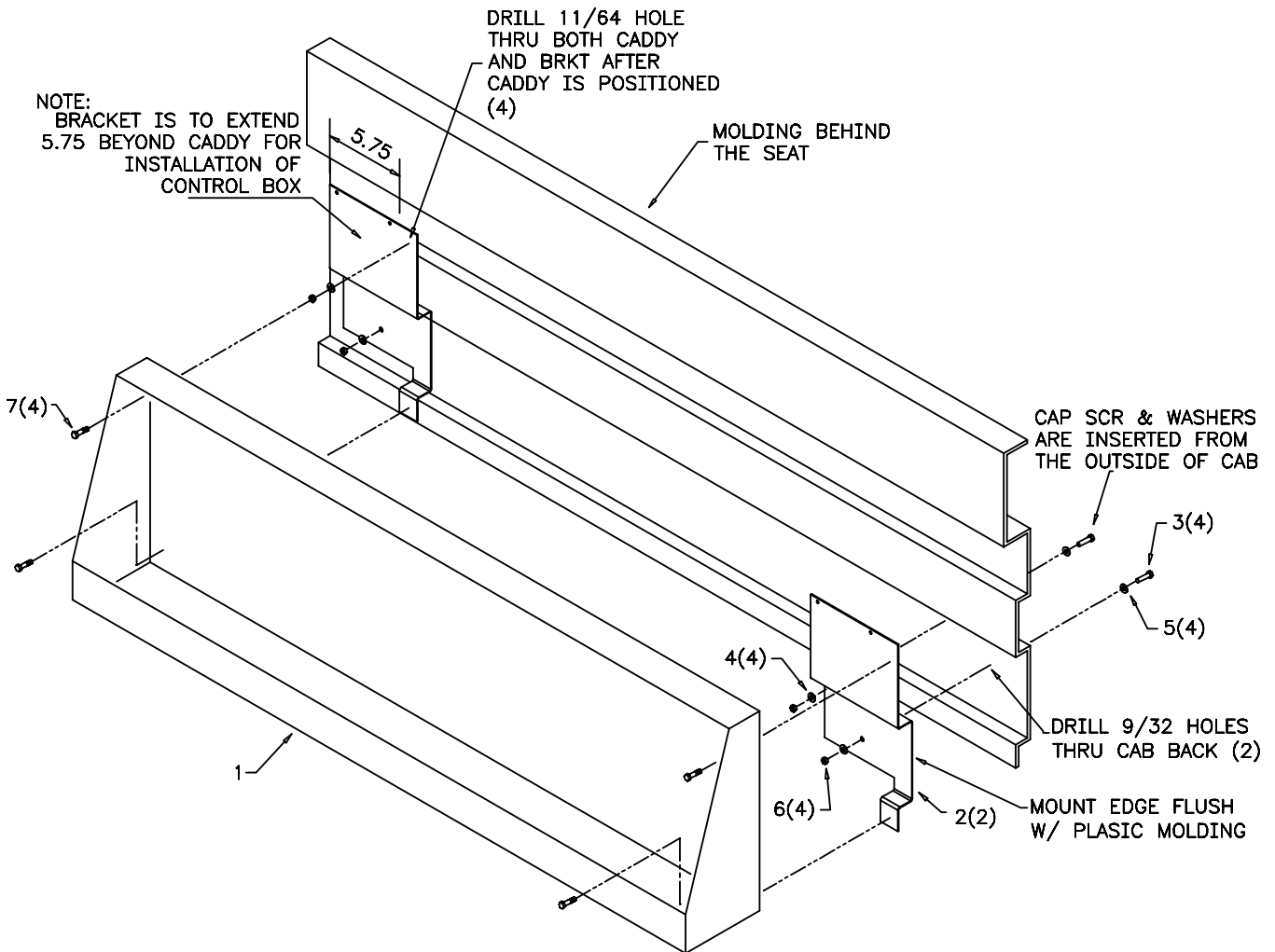
CONTINUED ON FOLLOWING PAGE

ITEM	PART NO.	DESCRIPTION	QTY
1.	20028	SERIES 60 COMPRESSOR	1
2.	60121256	MTG BRACKET-REAR	2
3.	93025998	RUNNING BOARD	1
4.	72601144	CAP SCR 9/16-12X2 HHGR8	6
5.	72062275	NUT 9/16-12 TOPLOCK GR8	6
6.	72063117	WASHER 9/16 FLAT HARD	12
7.	70073147	FIRE EXTINGUISHER W/BRKT	1
8.	70073146	KIT-REFLECTOR	1
9.	70733305	DEFLECTOR	1
10.	70731788	AIR TANK 22.5GAL	1
11.	73540054	CHECK VALVE	1
12.	70144807	SPRING	4
13.	72053535	STREET ELBOW 3/4NPT 45°	2
14.	72053458	BARB NIPPLE 3/4MPT 3/4	2
15.	72060920	CAP SCR 1/2-13X3-1/4 HHGR5	4
16.	72062080	NUT 1/2-13 LOCK	4
17.	72063005	WASHER 1/2 WRT	8
18.	72531836	REDUCER BUSHING 1-1/4 3/4	2
19.	73054032	SAFETY VALVE 1/4 200PSI	1



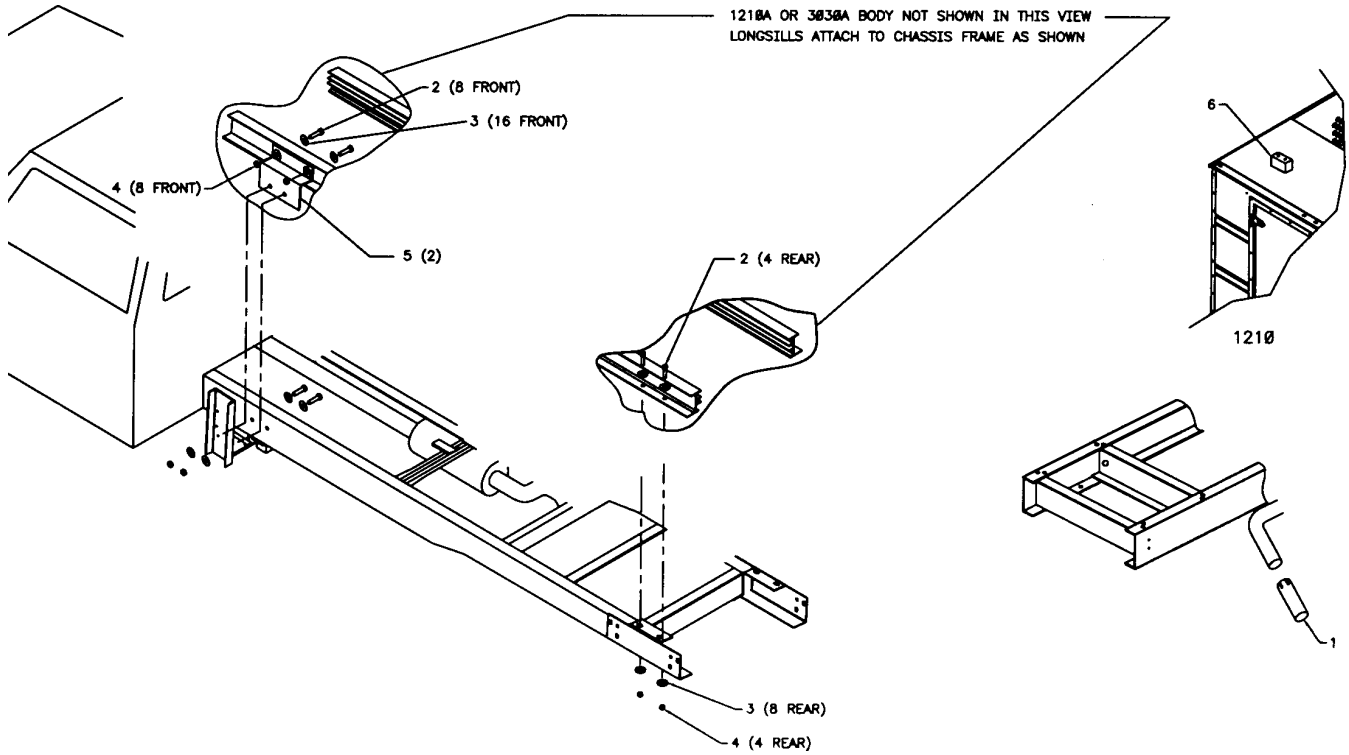
**CHASSIS PREP-BODY W/ SERIES 60  
COMPRESSOR-'99 FORD CHASSIS  
(41714854-2)**

ITEM	PART NO.	DESCRIPTION	QTY
1.	70733084	CAB CADDY	1
2.	60121009	MTG BRACKET	2
3.	72060005	CAP SCR 1/4-20X1-1/4 HHGR5	4
4.	72063001	WASHER 1/4 WRT	4
5.	76392820	WASHER 1/4 BONDED	4
6.	72062104	NUT 1/4-20 LOCK	4
7.	72061004	SHT MTL SCR #14X3/4 SLTHEX	4



**INSTALLATION-BODY W/SERIES 60  
COMPRESSOR-'99 FORD CHASSIS  
(41714856)**

ITEM	PART NO.	DESCRIPTION	QTY
1.	70143334	EXHAUST CONNECTOR	1
2.	72601144	CAP SCR 9/16-12X2 HHGR8	12
3.	72063117	WASHER 9/16 FLAT HARD	24
4.	72062275	NUT 9/16-12 TOP LOCK	12
5.	60121257	BRACKET	2
6.	60121084	SPACER-BLOCK	1

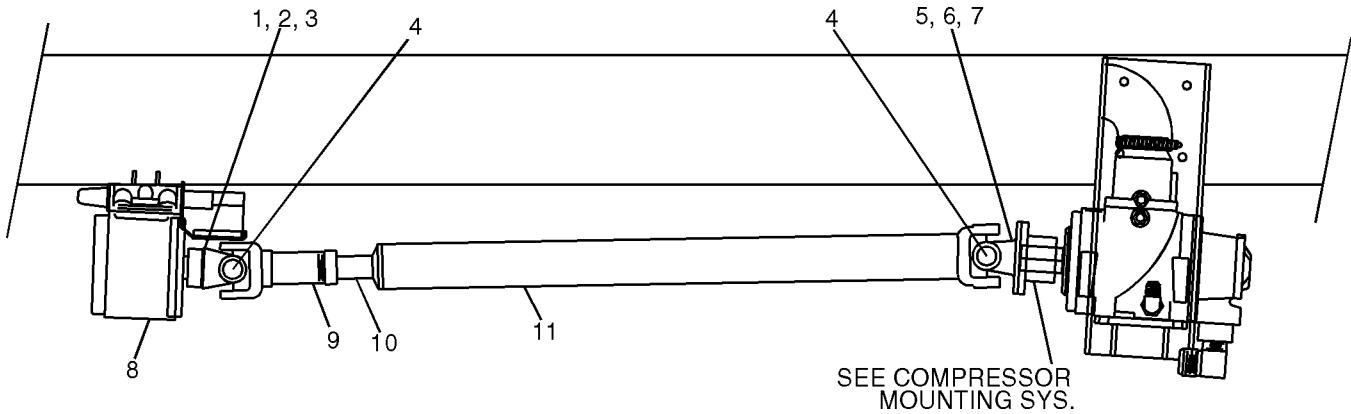


**DRIVESHAFT ASM (70008W)**

ITEM	PART NO.	DESCRIPTION	QTY
1.	300164-533	END YOKE	1
2.	973406-050	SET SCREW W/HOLE 3/8-16	1
3.	301486	WIRE-SET SCR	1
4.	300154-153	U-JOINT	2
5.	300196-329	FLANGE YOKE	1
6.	929406-125	BOLT 3/8X1-1/4UNF GR8	4
7.	925706-198	NUT 3/8 LOCK	4
8.	300159-074	PTO	1
9.	300248-093	FILLER BLOCK	1
10.	300247-006	STUD KIT	1
11.	300155-128	SLIP ASM 1-3/8	1
12.	300198-1312	SHAFT 1	1
13.	300197-017	TUBE-YOKE ASM	1

**WARNING**

The installer of the driveline must inspect the final position of the driveline to determine whether its location provides sufficient protection to an operator, or other personnel, from hazards associated with a rotating driveline. If protection is insufficient, the installation of a guard is required. If you are unsure of methods to guard a rotating driveline, call Iowa Mold Tooling Co., Inc. for instructions. Failure to do so may result in serious injury or death.



**⚠ DANGER**



CONTACT WITH A ROTATING DRIVELINE  
WILL CAUSE  
**DEATH OR SERIOUS INJURY**  
**KEEP AWAY**

- Keep clear of rotating drive shaft.
- Never work on or near an installed power take-off or driveline with the engine running.

70392891

**ELECTRICAL INSTALLATION-BODY W/  
SERIES 60 COMPRESSOR (41714861-1)**

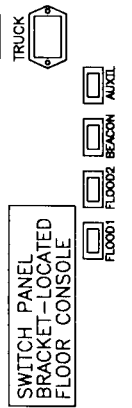
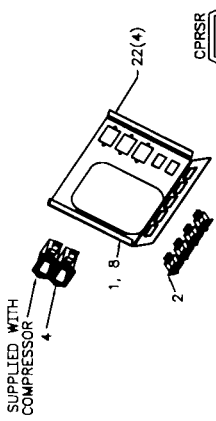
CONTINUED ON FOLLOWING PAGE

ITEM	PART NO.	DESCRIPTION	QTY
1.	60121244	SWITCH BRACKET	1
2.	77041386	SWITCH-SGL POLE LIGHTED	4
4.	70073155	METER-HOUR	1
5.	77040186	TERMINAL 1/4FSLPON 16-14GA	4
6.	60121243	SWITCH BRACKET	1
8.	70394978	DECAL-SWITCH PANEL	1
9.	77044672	CIRCUIT BREAKER 40A	1
10.	60121009	BRACKET-CONTROL BOX	1
11.	72060614	MACH SCR #8-32X1 RDHD	2
12.	72062207	NUT #8-32 HEX LOCK	2
13.	51713793	CONTROL BOX (SEE DWG)	1
14.	70733297	IDLE CONTROL	1
15.	77040389	TERM-1/4FSLPON 16-14GA	12
16.	77044694	WIRE HARNESS	1
17.	77040384	LIGHT-COMPARTMENT	4
18.	72661491	CLIP-CONDUIT CLAMP	12
19.	76392227	RUBBER GROMMET 3/8	2
20.	76393636	RUBBER GROMMET 2	4
21.	77040357	LIGHT-CLEAR RED	2
22.	72061100	SCR #10X1/2 HH SLFTAP	4
23.	77040026	FLOODFLIGHT 12V	2
24.	89044330	LOOM 5/8 ID SPLIT	25FT
25.	77044689	CONNECTOR 1-WAY	1
26.	72061004	SHT MTL SCR #14X3/4 SLT HX	3
27.	77040020	HORN-BACKUP	1
28.	77040000	TERMINAL #10STUD 16-14GA	4
29.	77044704	HARNESS	1
30.	77044703	HARNESS	2
31.	70394069	SEAL-CABLE	1
33.	77044550	TERMINAL F 20-18GA	1
35.	70145522	RETAINER-SPRING CLIP	20
36.	77040358	LIGHT-CLEAR AMBER	2
37.	89044056	LOOM 5/16 ID SPLIT	17FT
38.	77040009	TERMINAL 3/8STUD #2CABLE	1
39.	89394234	TUBE-HEAT SHRINK 1/2X6	1
40.	72060004	CAP SCR 1/4-20X1 HHGR5	2
41.	72063001	WASHER 1/4 WRT	4
42.	72062104	NUT 1/4-20 LOCK	7
43.	77040047	TERMINAL 1/4MSLPON 16-14GA	1
44.	77044556	DIODE 2.2AMP/274V	1
45.	77044693	FUSE AGC 2AMP	1
46.	77044691	FUSE HOLDER	1
47.	70145421	TUBE-HEAT SHRINK .18	.5FT
48.	77040377	CONNECTOR-TELSPLICE	5
49.	77040378	SPLICE TAP	1
50.	70394558	TIE	2
51.	77040282	TERMINAL PIGBAC 16-14GA	1
52.	52705887	BRACKET-BEACON LT	1
53.	77040013	BEACON LIGHT-AMBER	1
54.	77040048	BUTT CONNECTOR	1
55.	72060048	CAP SCR 3/8-16X1-1/2 HHGR5	4
56.	72063051	WASHER 3/8 LOCK	4
57.	72062002	NUT 3/8-16 LOCK	4
58.	72060004	CAP SCR 1/4-20X1 HHGR5	5
59.	72063049	WASHER 1/4 LOCK	5
60.	77044651	TERMINAL 3/8STUD 16-14GA	2
61.	76394572	GROMMET-LIGHT	4
62.	77044744	HARNESS	1
63.	77044709	HARNESS-BODY/CAB	1
64.	77041251	RELAY	1
65.	76392820	WASHER 1/4 BONDED	2
66.	77044623	CONNECTOR	1
67.	70394069	SEAL-CONNECTOR	4
68.	77044550	TERMINAL	4

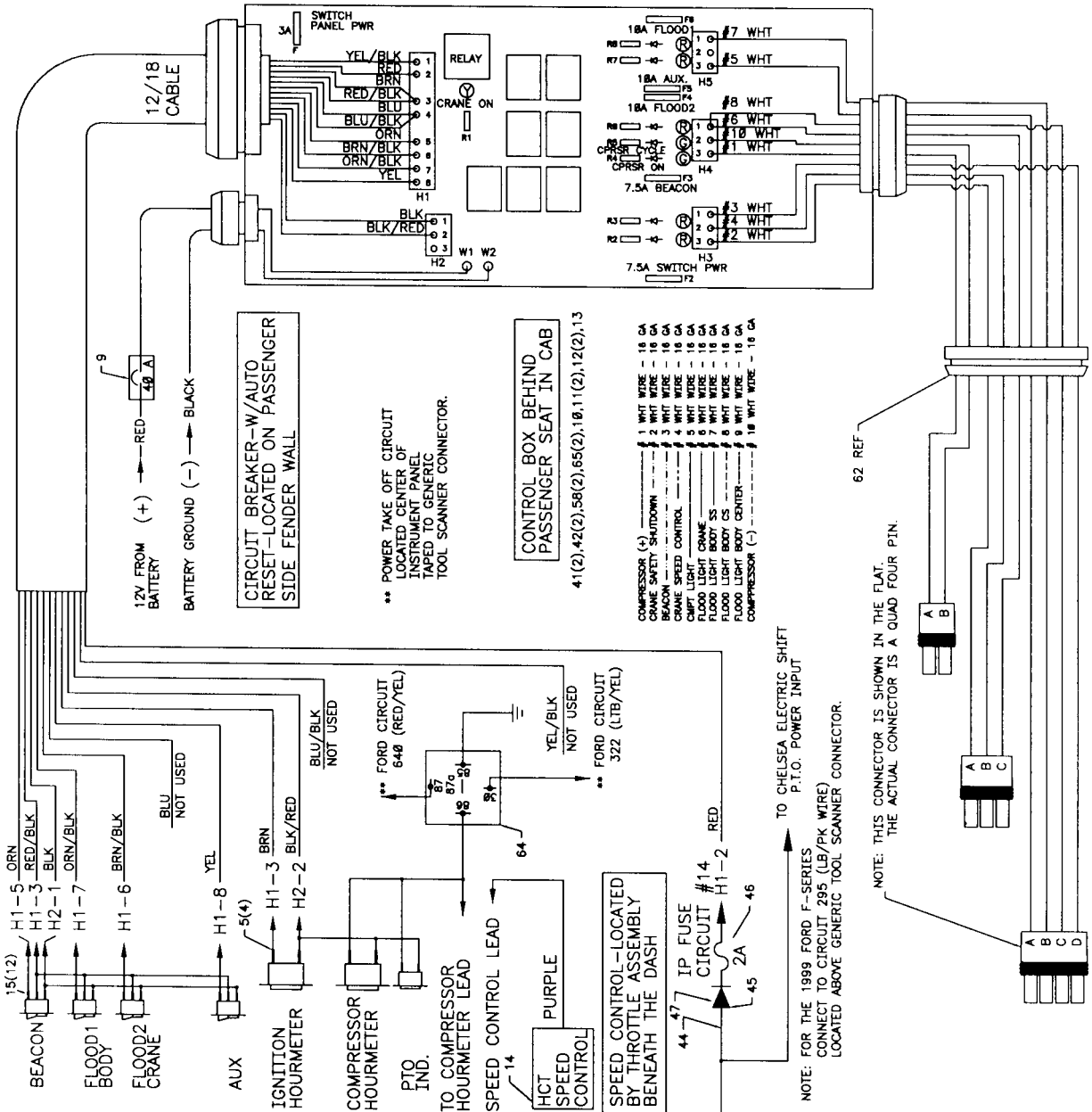


**ELECTRICAL INSTALLATION-BODY W/  
SERIES 60 COMPRESSOR (41714861-2)**

CONTINUED ON FOLLOWING PAGE



H1	FUNCTION	WIRE COLOR
1	12V ENG. SPEED OUT	YELLOW/BLACK
2	IGNITION POWER	RED
3	SWITCH PANEL HOUR METER PANEL	RED/BLACK
4	SWITCH PANEL HOUR METER	RED/BLACK
5	COMPRESSOR SWITCH	BLUE
6	COMPRESSOR HOUR METER	BLUE/BLACK
7	BEACON SWITCH	ORANGE
8	FLOOD 2 SWITCH	BROWN/BLACK
	FLOOD 1 SWITCH	BROWN/BLACK
	AUXILIARY SWITCH	ORANGE/BLACK
		YELLOW
H2	FUNCTION	WIRE COLOR
1	SWITCH PANEL GROUND	BLACK
2	HOURMETER GROUND	BLACK/RED
H3	FUNCTION	WIRE CODE
1	BEACON LIGHT	WHITE #3
2	CRANE SPEED CONTROL IN	WHITE #4
3	CRANE SPEED POWER OUT	WHITE #2
H4	FUNCTION	WIRE CODE
1	FLOOD LIGHT 2 (CRANE)	WHITE #6
2	FLOOD LIGHT 3 (BODY) OPT.	WHITE #8
3	FROM PRESSURE SWITCH	WHITE #19
	TO PRESSURE SWITCH	WHITE #1
H5	FUNCTION	WIRE CODE
1	AUXILIARY SWITCH	WHITE #5
2	SPEED CONTROL 97 GMC ONLY	---
3	FLOOD LIGHT 1 (BODY)	WHITE #7



\*\* POWER TAKE OFF CIRCUIT LOCATED CENTER OF INSTRUMENT PANEL TAPED TO GENERIC TOOL SCANNER CONNECTOR.

CONTROL BOX BEHIND PASSENGER SEAT IN CAB  
41(2),42(2),58(2),10,11(2),12(2),13

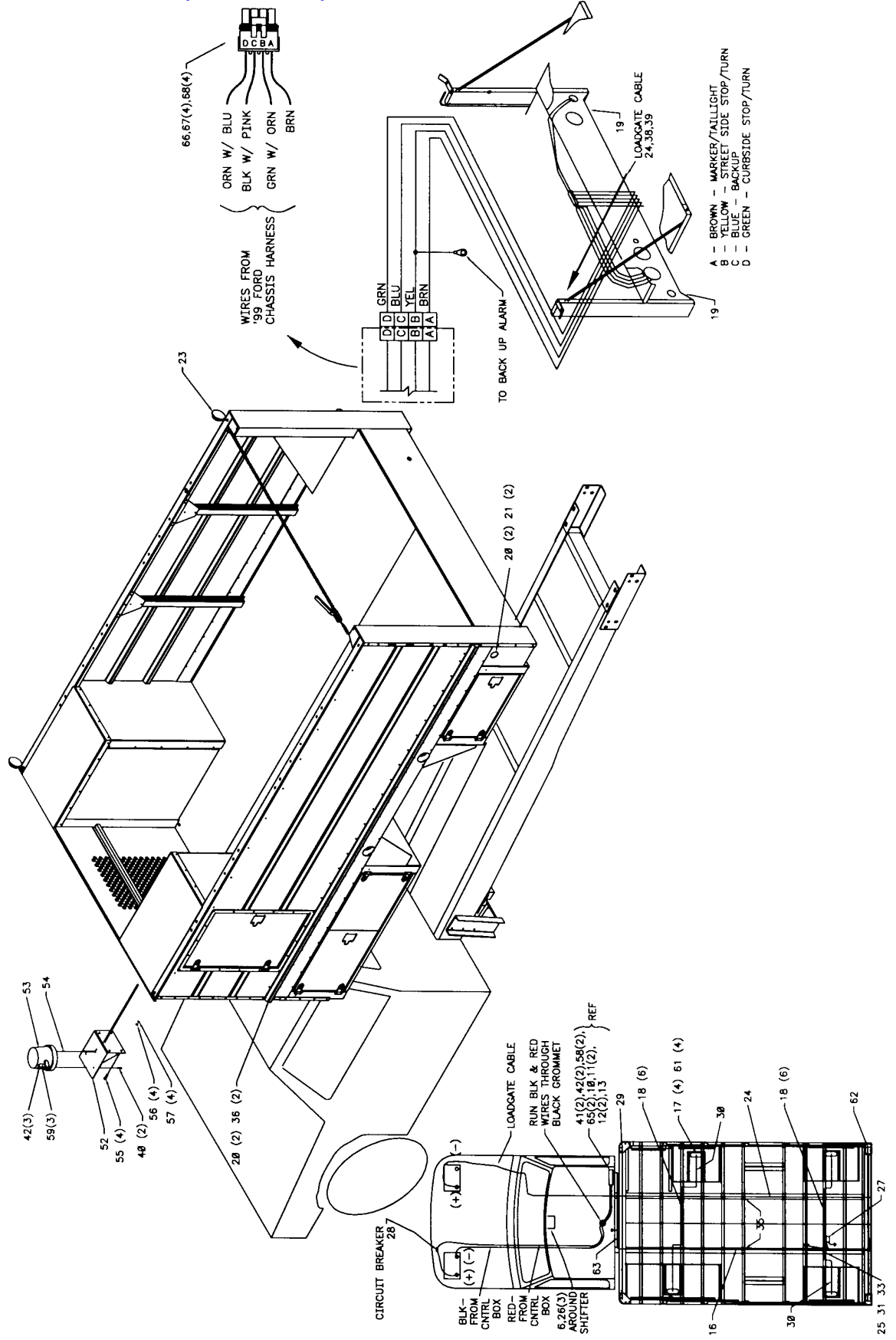
- 1 WHT WIRE - 18 GA
- 2 WHT WIRE - 18 GA
- 3 WHT WIRE - 18 GA
- 4 WHT WIRE - 18 GA
- 5 WHT WIRE - 18 GA
- 6 WHT WIRE - 18 GA
- 7 WHT WIRE - 18 GA
- 8 WHT WIRE - 18 GA
- 9 WHT WIRE - 18 GA
- 10 WHT WIRE - 18 GA
- 11 WHT WIRE - 18 GA
- 12 WHT WIRE - 18 GA

NOTE: FOR THE 1999 FORD F-SERIES CONNECT TO CIRCUIT 295 (LB/PK WIRE) LOCATED ABOVE GENERIC TOOL SCANNER CONNECTOR.

NOTE: THIS CONNECTOR IS SHOWN IN THE FLAT. THE ACTUAL CONNECTOR IS A QUAD FOUR PIN.

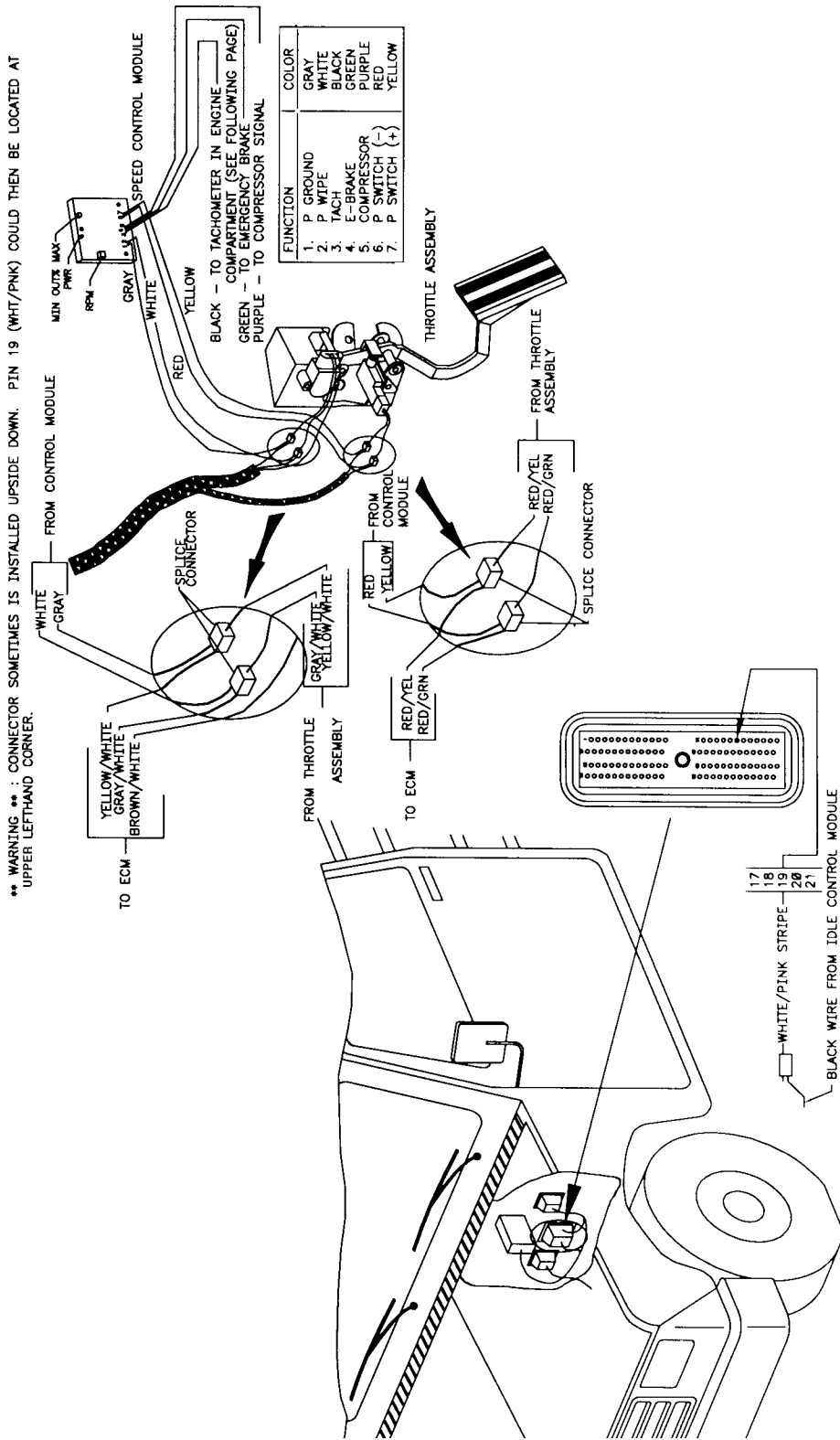
# ELECTRICAL INSTALLATION-BODY W/ SERIES 60 COMPRESSOR (41714861-3)

CONTINUED ON FOLLOWING PAGE

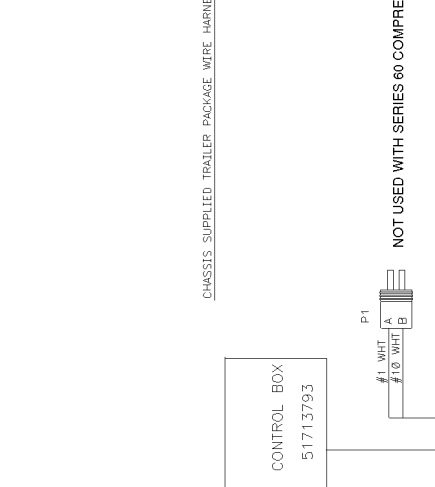
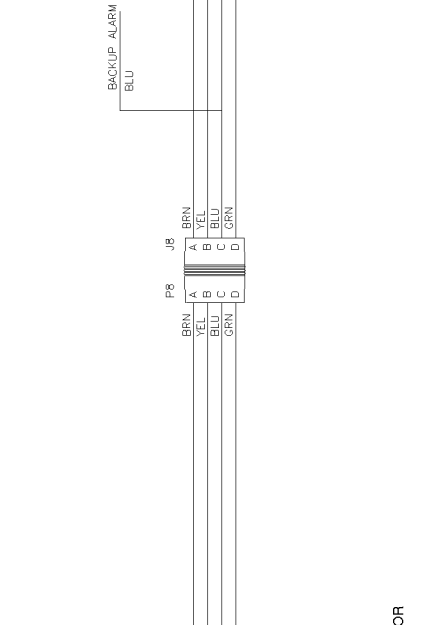
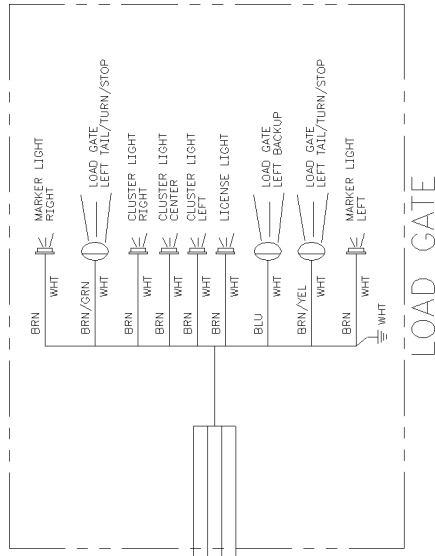


# ELECTRICAL INSTALLATION-BODY W/ SERIES 60 COMPRESSOR (41714861-4)

CONTINUED ON FOLLOWING PAGE



**ELECTRICAL INSTALLATION-BODY W/  
SERIES 60 COMPRESSOR (41714861-5)**



NOT USED WITH SERIES 60 COMPRESSOR

HARNESS MRK, FLD, BDN 77044704

HARNESS MRK, FLD, LDGT 77044744

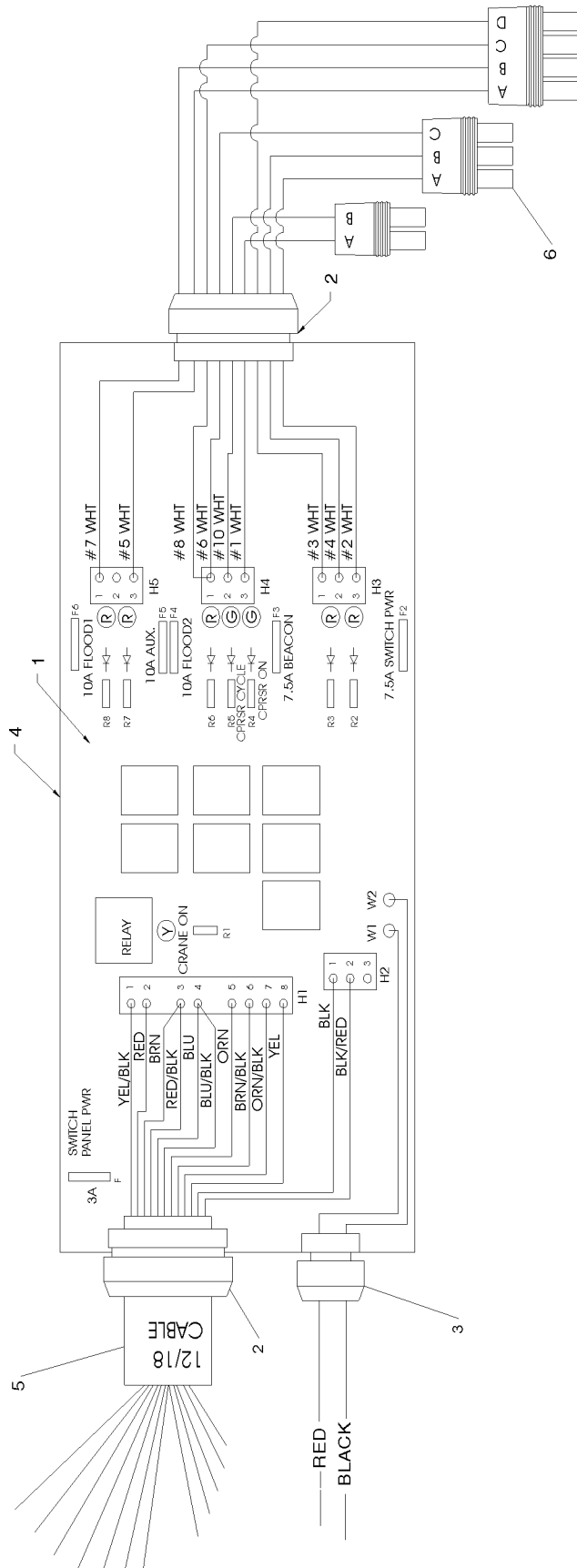
0001210A: 51713793.01:19980430

**CONTROL BOX (51713793)**

- 1. 77041515 RELAY BOARD
- 2. 77044653 STRAIN RELIEF .39-.55
- 3. 77044671 STRAIN RELIEF .24-.47
- 4. 51713975 ENCLOSURE
- 5. 89044136 CABLE 18GA 12WIRE
- 6. 77044710 HARNESS

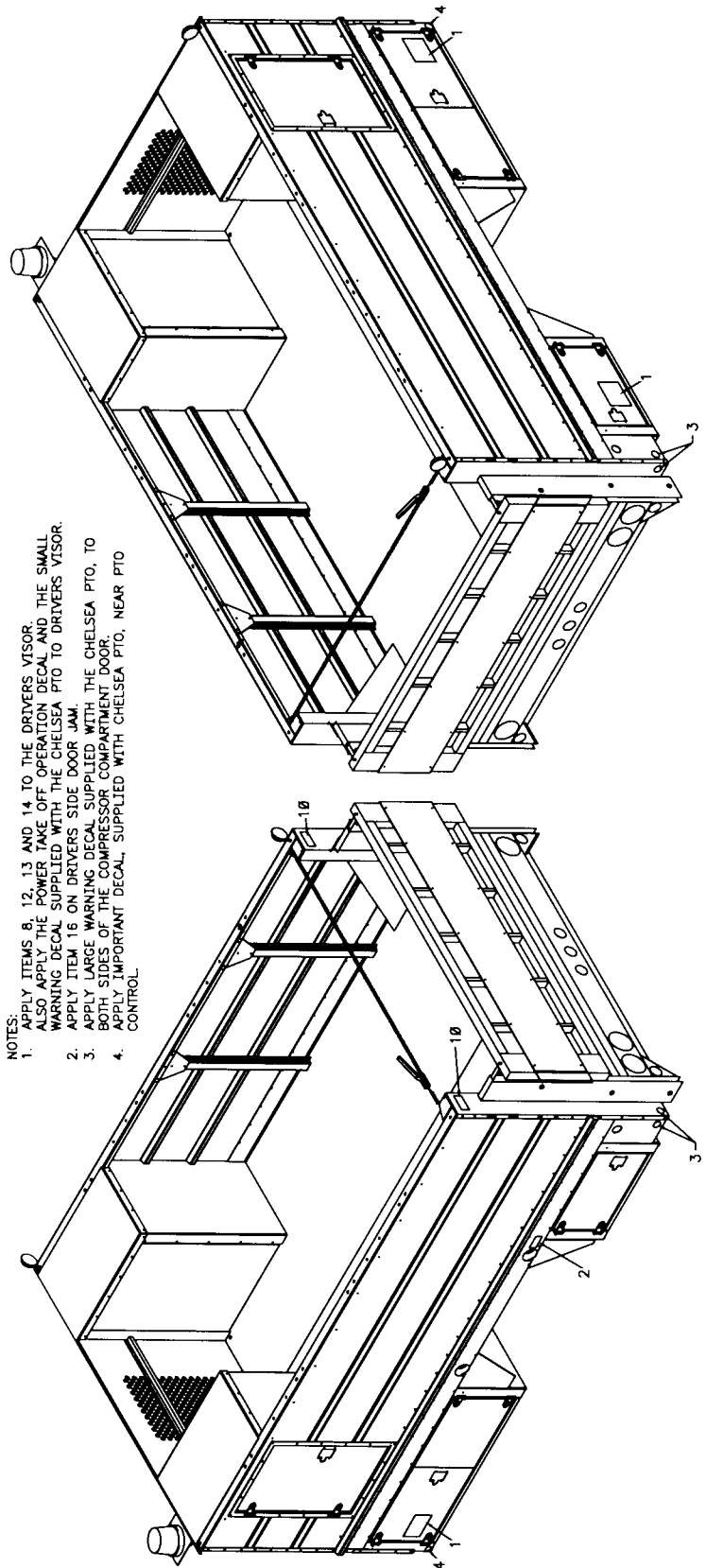
2-17

- 1
- 2
- 1
- 1
- 13FT
- 1



**DECAL KIT (95714891)**

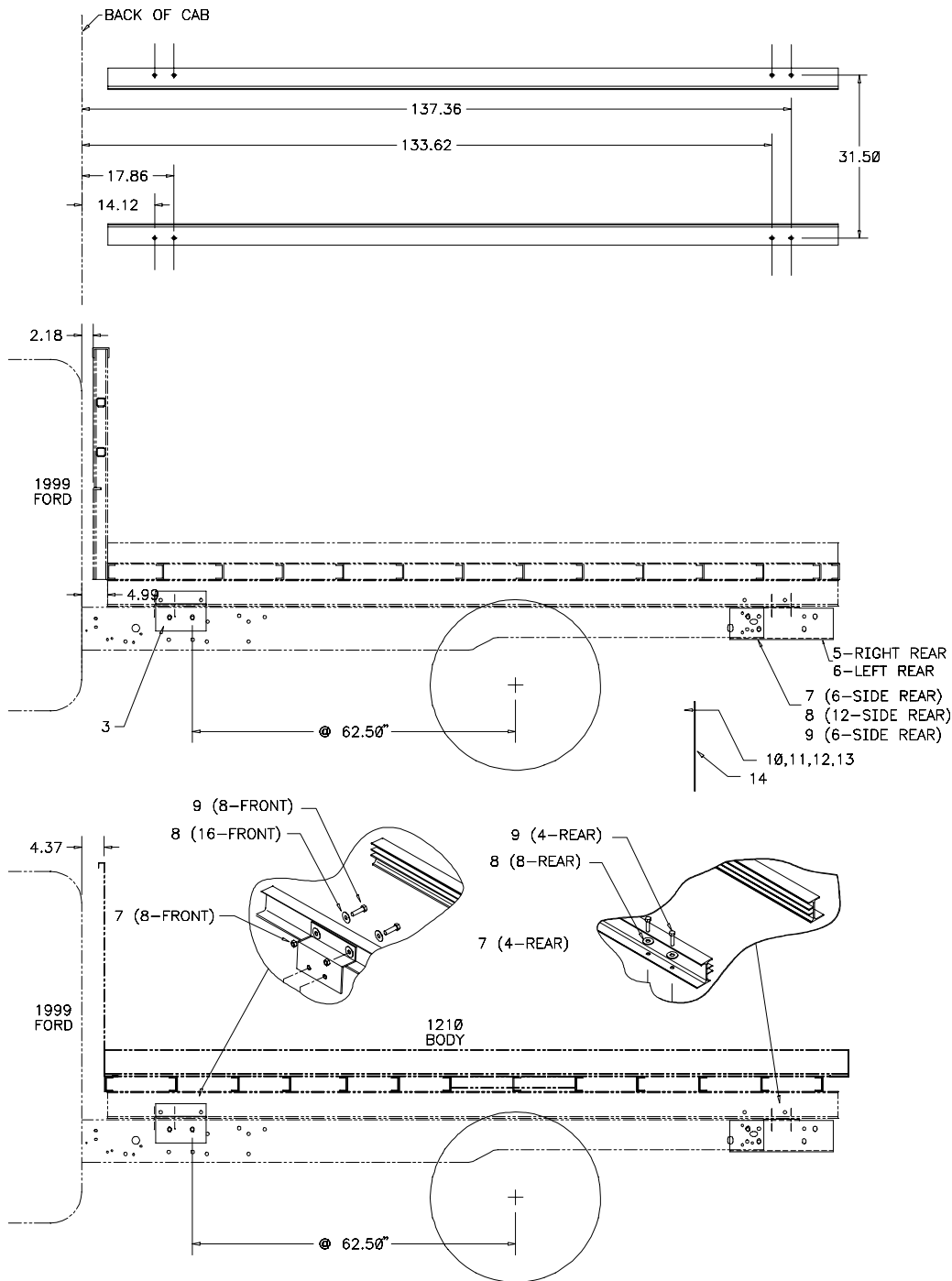
ITEM	PART NO.	DESCRIPTION	QTY
1.	71393883	DECAL-TIRE HANDLER PROD	3
2.	70392309	DECAL-DIESEL FUEL ONLY	1
3.	70039057	REFLECTOR-RED ROUND	4
4.	70039058	REFLECTOR-AMBER ROUND	2
7.	71030134	DECAL-CAUTION OIL LEVEL	2
8.	70392982	DECAL-SERVICE AND REPAIR	2
10.	70391595	DECAL-CHAIN LATCH	2
12.	70394092	DECAL-CAUTION BRK/COMP	1
13.	70392213	DECAL-DON'T WASH/WAX	1
14.	70392965	DECAL-THINK SAFETY	1
15.	70393309	LICENSE PLATE-IMT	1
16.	70392387	DECAL-FINAL STG VEH CERT	1



NOTES:  
 1. APPLY ITEMS 8, 12, 13 AND 14 TO THE DRIVERS VISOR. ALSO APPLY THE POWER TAKE OFF OPERATION DECAL AND THE SMALL WARNING DECAL SUPPLIED WITH THE CHELSEA PTO TO DRIVERS VISOR.  
 2. APPLY ITEM 16 ON DRIVERS SIDE DOOR JAM.  
 3. APPLY LARGE WARNING DECAL SUPPLIED WITH THE CHELSEA PTO, TO BOTH SIDES OF THE COMPRESSOR COMPARTMENT DOOR.  
 4. APPLY IMPORTANT DECAL, SUPPLIED WITH CHELSEA PTO, NEAR PTO CONTROL.

**INSTALLATION KIT-1999 FORD 84"CA  
(93714833)**

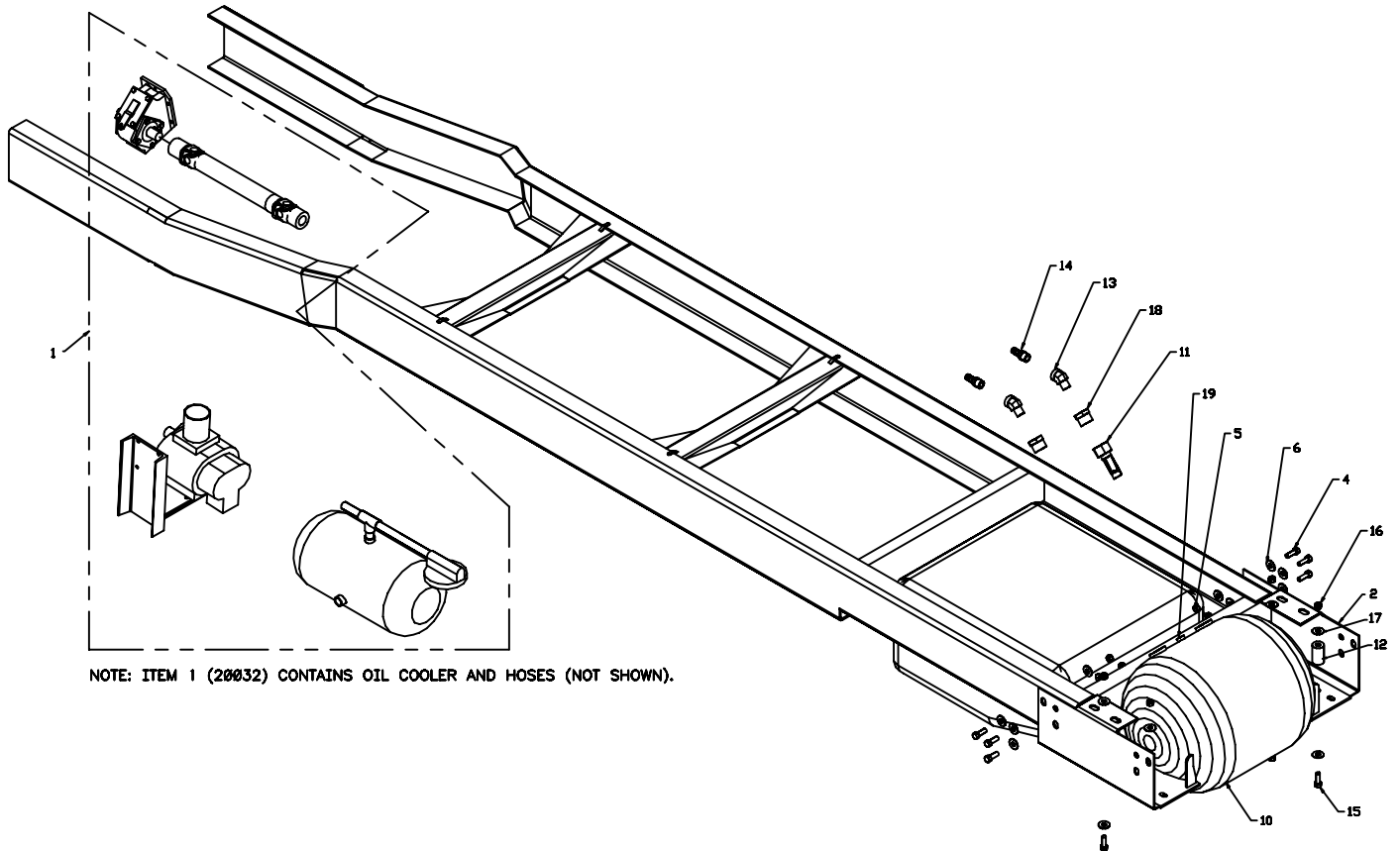
3.	60121257	FRT MTG BRACKET	2
5.	60122279	MTG BRKT-RIGHT REAR	1
6.	60122278	MTG BRKT-LEFT REAR	1
7.	72062275	NUT 9/16-12 HEX LOCK GR8Z	18
8.	72063117	WASHER 9/16 FLAT	36
9.	72601144	CAP SCR 9/16-12X2 HHGR8Z	18
10.	72060005	CAP SCR 1/4-20X1-1/4 HHGR5Z	6
11.	72062104	NUT 1/4-20 HEX NYLOC	6
12.	72063001	WASHER 1/4W FLAT	6
13.	72661471	WASHER 1/4X1	6
14.	76393799	MUD FLAP W/MT LOGO	2



**CHASSIS PREP-99 FORD/AT W/  
SERIES 60 COMPRESSOR (41715508-1)**

CONTINUED ON FOLLOWING PAGE

ITEM	PART NO.	DESCRIPTION	QTY
1.	20032	SERIES 60 COMPRESSOR	1
2.	60121256	MTG BRACKET-REAR	2
3.	93025998	RUNNING BOARD	1
4.	72601144	CAP SCR 9/16-12X2 HHGR8	6
5.	72062275	NUT 9/16-12 TOPLOCK GR8	6
6.	72063117	WASHER 9/16 FLAT HARD	12
7.	70073147	FIRE EXTINGUISHER W/BRKT	1
8.	70073146	KIT-REFLECTOR	1
9.	70733305	DEFLECTOR	1
10.	70731788	AIR TANK 22.5GAL	1
11.	73540054	CHECK VALVE	1
12.	70144807	SPRING	4
13.	72053535	STREET ELBOW 3/4NPT 45°	2
14.	72053458	BARB NIPPLE 3/4MPT 3/4	2
15.	72060920	CAP SCR 1/2-13X3-1/4 HHGR5	4
16.	72062080	NUT 1/2-13 LOCK	4
17.	72063005	WASHER 1/2 WRT	8
18.	72531836	REDUCER BUSHING 1-1/4 3/4	2
19.	73054032	SAFETY VALVE 1/4 200PSI	1

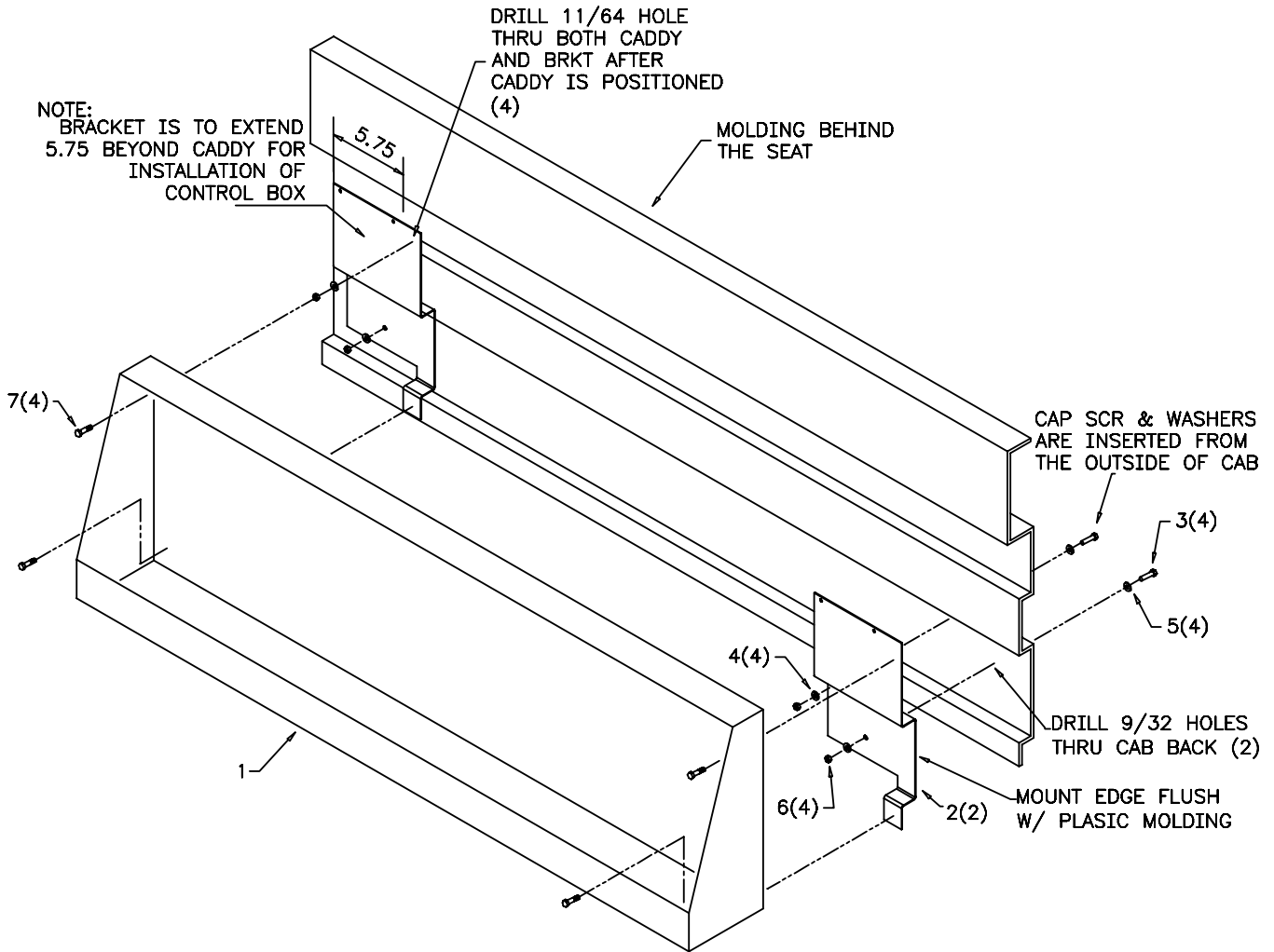


NOTE: ITEM 1 (20032) CONTAINS OIL COOLER AND HOSES (NOT SHOWN).



**CHASSIS PREP-99 FORD/AT W/  
SERIES 60 COMPRESSOR (41715508-2)**

ITEM	PART NO.	DESCRIPTION	QTY
1.	70733084	CAB CADDY	1
2.	60121009	MTG BRKT	2
3.	72060005	CAP SCR 1/4-20X1-1/4 HHGR5	4
4.	72063001	WASHER 1/4 WRT	4
5.	76392820	WASHER 1/4 BONDED	4
6.	72062104	NUT 1/4-20 LOCK	4
7.	72061004	SHT MTL SCR #14X3/4 SLTHEX	4



0001210A: :19980430



**IOWA MOLD TOOLING CO., INC.**

BOX 189, GARNER, IA 50438-0189

TEL: 515-923-3711

TECHNICAL SUPPORT FAX: 515-923-2424