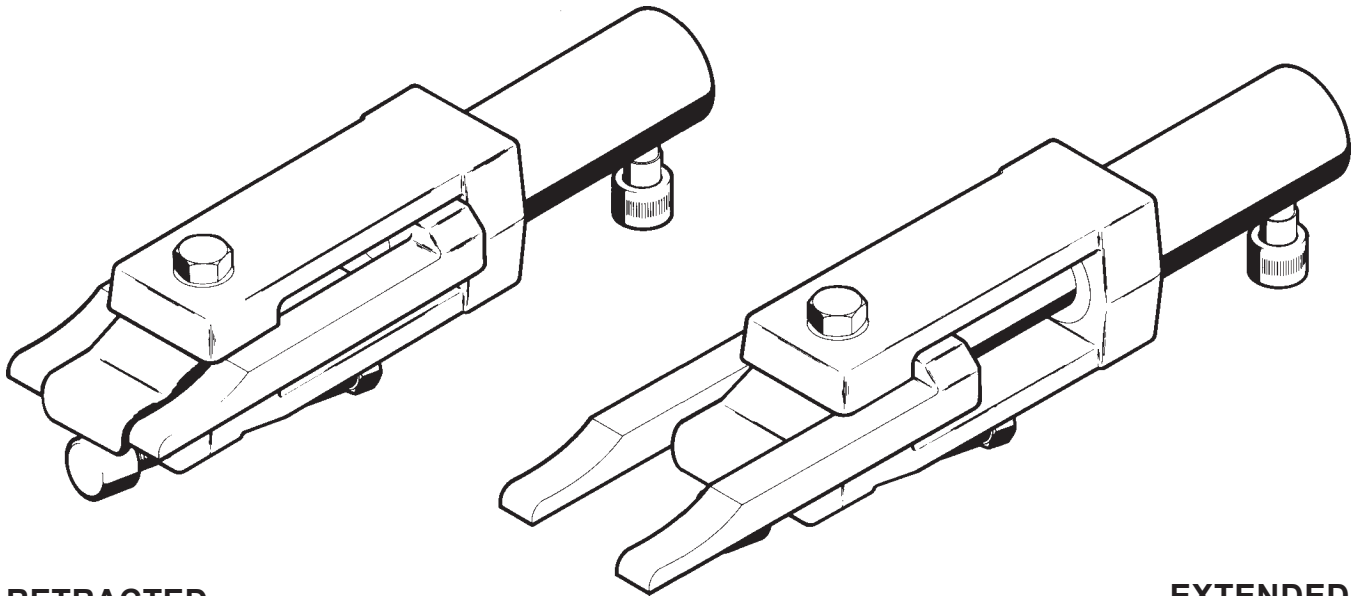




Model 1800A Beadbreaker Model B



RETRACTED

EXTENDED

OPERATION

To operate the IMT 1800A BeadBreaker:

1. Evacuate the air in the tire.
 - A. Remove the valve core stem to exhaust all air from the tire.
 - B. Make certain that the valve stem is not plugged by running a wire through the stem.
2. Position the tool with the hook in the pry bar pocket of the rim.
3. Finger tighten the set screw until the tool is perpendicular to the wheel.
4. Apply hydraulic pressure with either a hand pump or an air-over-hydraulic pump. Move the flange ring approximately 3/4" (1.9cm).
5. Insert a pry bar or spacer between the flange ring and bead seat band.
6. Release the tool and relocate it in an area away from the pry bar pocket and repeat the process.

CAUTION

DO NOT ATTEMPT TO RUN THE RAM OUT TO FULL STROKE WITH THE HOOK IN THE PRY BAR POCKET. FAILURE TO COMPLY MAY RESULT IN DAMAGE TO THE RIM.

DISASSEMBLY

To disassemble the IMT 1800A BeadBreaker:

1. With rod completely retracted, thoroughly clean the exterior of the tool with warm, soapy water.

NOTE

FURTHER WORK SHOULD BE DONE IN A CLEAN AND WARM ENVIRONMENT - ONE THAT IS FREE OF DIRT, GREASE AND OIL AND IS AT LEAST 70°F (21°C).

2. Remove the quick-disconnect fitting (item 21 or 24).

NOTE

REMOVING THE FITTING WILL PREVENT A VACUUM INSIDE THE CYLINDER AND PERMIT EASIER DISASSEMBLY.

3. Remove the 1/4-20 x 3-1/2" socket head screw (item 19) and washer (item 11).
4. Unscrew the cylinder (item 18) from the frame (item 1).
5. Unscrew the piston rod assembly (item 12) from the clevis (item 2) with a strap wrench.

CAUTION

THE USE OF A PIPE WRENCH OR CHAIN-TYPE STRAP WRENCH SHOULD BE AVOIDED. IF USED, MAKE CERTAIN THAT THE PISTON ROD IS COMPLETELY WRAPPED WITH ENOUGH RAGS TO PREVENT PENETRATION OF THE TOOL INTO THE MACHINED SURFACE.

6. Remove the retaining ring (item 16) from the piston rod (item 12).
7. Slide the slip retainer (item 15), u-cup (item 14) and bearing (item 13) off the piston rod.
8. If the spring (item 17) is being replaced, remove the 1/4-20 x 1-1/2" socket head screw (item 10) with washer (item 11).

NOTE

UNLESS THE SPRING IS VERY DISTORTED, IT WILL BE VERY DIFFICULT TO SEPARATE THE SPRING NUTS (ITEM 20) FROM THE SPRING. IT IS RECOMMENDED TO REPLACE BOTH SPRING NUTS.

9. Loosen the shoulder screw (item 5) and rotate the clevis (item 2) 90°. Slide the clevis out of the frame (item 1).
10. Do not remove the hook (item 3) unless it is being replaced.

ASSEMBLY

To assemble the IMT 1800A BeadBreaker:

1. Install the clevis (item 2) inside the frame (item 1).
2. Install the bearing (item 13), u-cup (item 14), slip retainer (item 15) and retaining ring (item 16) on the piston rod (item 12).
3. Install the rod wiper (item 8) in the piston guide (item 9) and slide the assembly over the rod and down to the bearing (item 13).
4. Thread both spring nuts (item 20) into the spring (item 17). Slide the assembled spring inside the piston rod and install the 1/4-20 x 1-1/2" socket head screw (item 10) with a new copper washer (item 11). Torque the screw to 100 in-lbs.
5. Apply Loctite 277 to the threads of the piston rod. Screw the piston rod into the threads on the clevis and tighten by hand.

CAUTION

DO NOT USE A WRENCH. THE ROD IS INSTALLED ONLY HANDTIGHT. THE USE OF A WRENCH MAY DAMAGE THE ROD.

6. Slide the piston guide (item 9) into the recess of the frame.
7. Work the cylinder (item 18) over the piston rod. Apply Loctite 277 to the threads of the cylinder and screw it into the housing. Tighten the cylinder until it "bottoms out" in the frame.
8. Install the 1/4-20 x 3-1/2" socket head screw (item 19) with a new washer (item 11) and thread it into the spring nut. Torque to 100 in-lbs.
9. Install the quick-disconnect fitting (item 21 or 24).

PURGING AIR

Air that is trapped inside the cylinder will cause erratic, bumpy movement. To purge the air from the ram:

1. Hold the BeadBreaker with the clevis pointing downward.
2. Completely extend the ram.
3. Release the pressure and allow the ram to retract. Repeat 3 or 4 times.

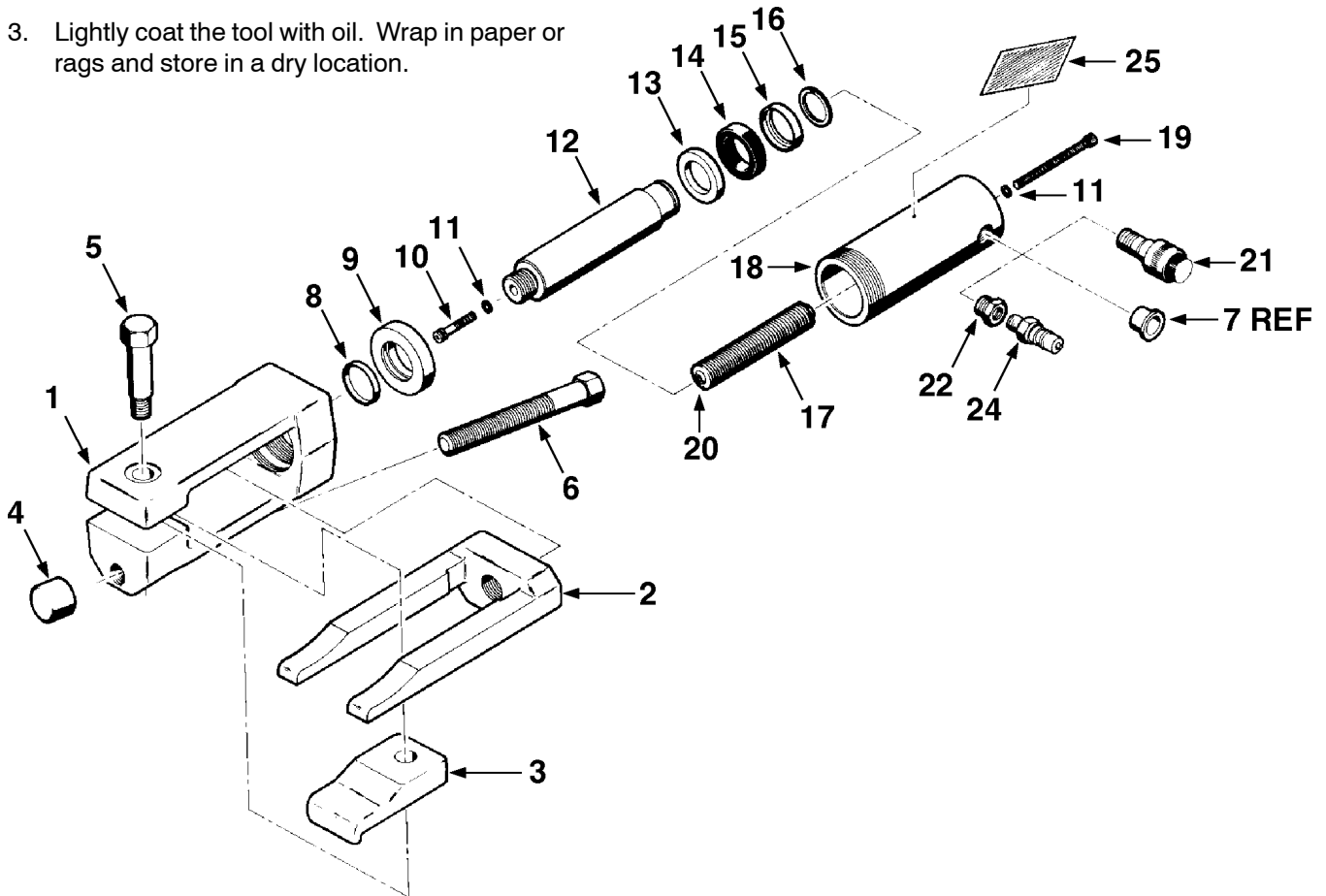
STORAGE

If the tool is to be stored for an extended length of time:

1. Hold the tool with the clevis pointing upward. With clean oil in the pump, extend and retract the ram several times to remove any traces of water that may be trapped inside the ram.
2. With the ram completely retracted, thoroughly clean the exterior of the tool with warm, soapy water. Rinse with clean water and blow dry with compressed air.
3. Lightly coat the tool with oil. Wrap in paper or rags and store in a dry location.

SPECIFICATIONS

BORE	1-7/8"
STROKE	4"
LENGTH (RETRACTED)	17"
WEIGHT	28 LBS
FORCE (AT 10,000 PSI INPUT)	28,000 LBS



ITEM	PART NO.	DESCRIPTION	QTY	ITEM	PART NO.	DESCRIPTION	QTY
1.	70142424	FRAME	1	14.	76392171	U-CUP	1
2.	70142425	CLEVIS	1	15.	70142451	RETAINER	1
3.	70073421	HOOK	1	16.	72066329	RING-RETAINING	1
4.	70073418	NUT-PRESSURE	1	17.	7Y202625	SPRING	1
5.	70073417	SHLDR SCR 5/8-11X7/8X3-1/8HH	1	18.	70142452	CYLINDER	1
6.	70073416	SET SCR 3/4-10X6 HH	1	19.	72060907	SCR 1/4-20X3-1/2 SH	1
7.		PLUG-SHIPING	REF	20.	7Y201360	NUT 1/4-20 SPRING	2
8.	76392172	WIPER	1	21.	72053550	COUPLER 3/8FPT	1
9.	70145208	GUIDE-PISTON	1	22.	72533503	NIPPLE 3/8NPT	1
10.	72060709	SCR 1/4-20X1-1/2 SH	1	24.	72053546	COUPLER-QUICK DISCONNECT	1
11.	70024221	WASHER 7/32 COPPER	1	25.	70391456	DECAL-IMT DIAMOND	1
12.	70029588*	PISTON	1	26.	79075087	RAM (INCL:8-20)	REF
	70029629**	PISTON	1				
13.	70024278	BEARING	1				

* USE WITH BREAKER ASSEMBLIES WITH DATE CODE *3013K AND EARLIER
 ** USE WITH BREAKER ASSEMBLIES WITH DATE CODE *3113K AND EARLIER
 NOTE: DATE CODE IS STAMPED ON CYLINDER BARREL