



PARTS MANUAL

HD300 Compressor

COMPRESSOR OPERATION PRECAUTIONS

CAUTION

MAXIMUM PRESSURE IS 100 PSI CONTINUOUS,
150 PSI INTERMITTENT.

CAUTION

COMPRESSOR RPM SHOULD NOT EXCEED
1000-1200 WITHOUT CONSULTING THE
FACTORY.

WARNING

ANY PART OF THE COMPRESSOR, MOTOR,
ENGINE OR DISCHARGE LINE, AFTER
OPERATING, MAY BE HOT ENOUGH TO CAUSE
INJURY IF TOUCHED.

INSTALLATION NOTES

1. Make sure parts are assembled as shown in exploded views (especially the valve plates).
2. The "top" plate is the intake. The bottom valve plate is the discharge. The top valve plate is stamped "THIS SIDE UP".
3. If you attach the reed valves, be sure to use the correct reeds. The intake reed is .010" thick and the discharge reed is .015" thick.
4. Make sure gaskets are all in good condition and properly assembled.
5. Make sure the six head bolts are tightened properly. First tighten all head bolts with light tension, then tighten with final tension. It is best to tighten the two long bolts before the four short bolts. Recommended torque is 400 inch-pounds.
6. Retorque all head bolts after 5 hours of compressor use. Check torque on a regular basis.

COMPRESSOR LUBRICATION

Before operating your compressor, check the oil level and add oil if necessary. Oil level should be checked on a daily basis. Use only IMT's synthetic compressor oil. The use of any other oil causes excessive carbon buildup, and will void the warranty on the compressor.

CAUTION

CHANGE OIL EVERY 100 HOURS OR SOONER IF IT BECOMES DIRTY. MOST AIR COMPRESSOR FAILURE IS CAUSED BY IMPROPER LUBRICATION.

ORDERING REPAIR PARTS

When placing orders for repair parts it is necessary that all of the following information be provided:

COMPRESSOR MODEL NUMBER
COMPRESSOR SERIAL NUMBER
REPLACEMENT PART NUMBER
PART DESCRIPTION
QUANTITY REQUIRED

Order replacement parts by contacting:

IOWA MOLD TOOLING CO., INC.
500 HWY 18 WEST
GARNER, IA 50438
515-923-3711

OR

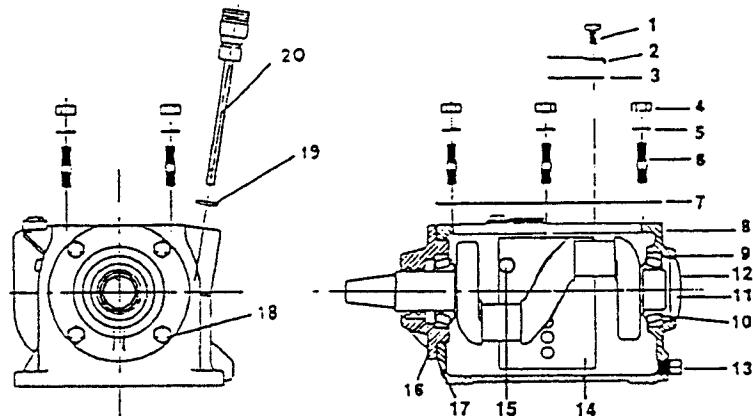
YOUR LOCAL DISTRIBUTOR.

REVISED
08-09-91
04-24-92

CRANKCASE GROUP

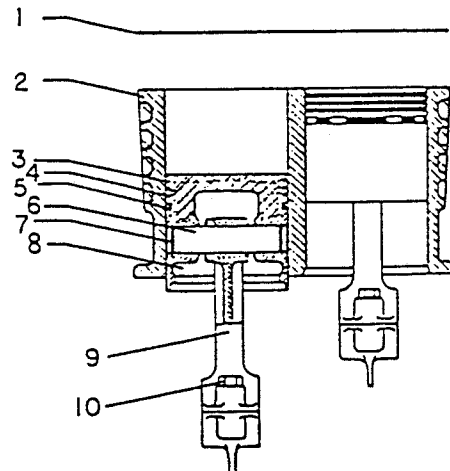
ITEM	PART NO.	DESCRIPTION	QTY
1.	72060841	CAP SCR 1/4X1/2 HH	2
2.	76392129	BREATHER VALVE BUMPER	2
3.	70142414	BREATHER VALVE	2
4.	72062036	NUT 5/16-24 HEX	6
5.	72063050	WASHER 5/16 LOCK	6
6.	72601055	STUD 5/16 X 1-1/4	6
7.	76039399	CYLINDER GASKET	2
8.	70014934	CRANKCASE	1
9.	70731952	BEARING CUP	2
10.	70055012	BEARING CONE	2
11.	70141625	CRANKSHAFT	1
12.	70143970	BEARING HOLE PLUG	1
13.	72053245	OIL DRAIN PLUG	1
14.	70143969	BAFFLE PLATE	1
15.	72060841	CAP SCR 1/4X1/2 HH	2
16.	70143968	BEARING CARRIER	1
17.	76393435	BEARING PLATE GASKET	1
18.	72060023	CAP SCR 5/16X3/4 HH	4
19.	7Q072112	O-RING	1
20.	70143971	DIPSTICK (INCL:19)	1
21.	72066268	PULLEY KEY	1
22.	77044419	CLUTCH-FIELD (LESS PULLEY)	1
23.	70732444	CLUTCH-FIELD HARDWARE	1

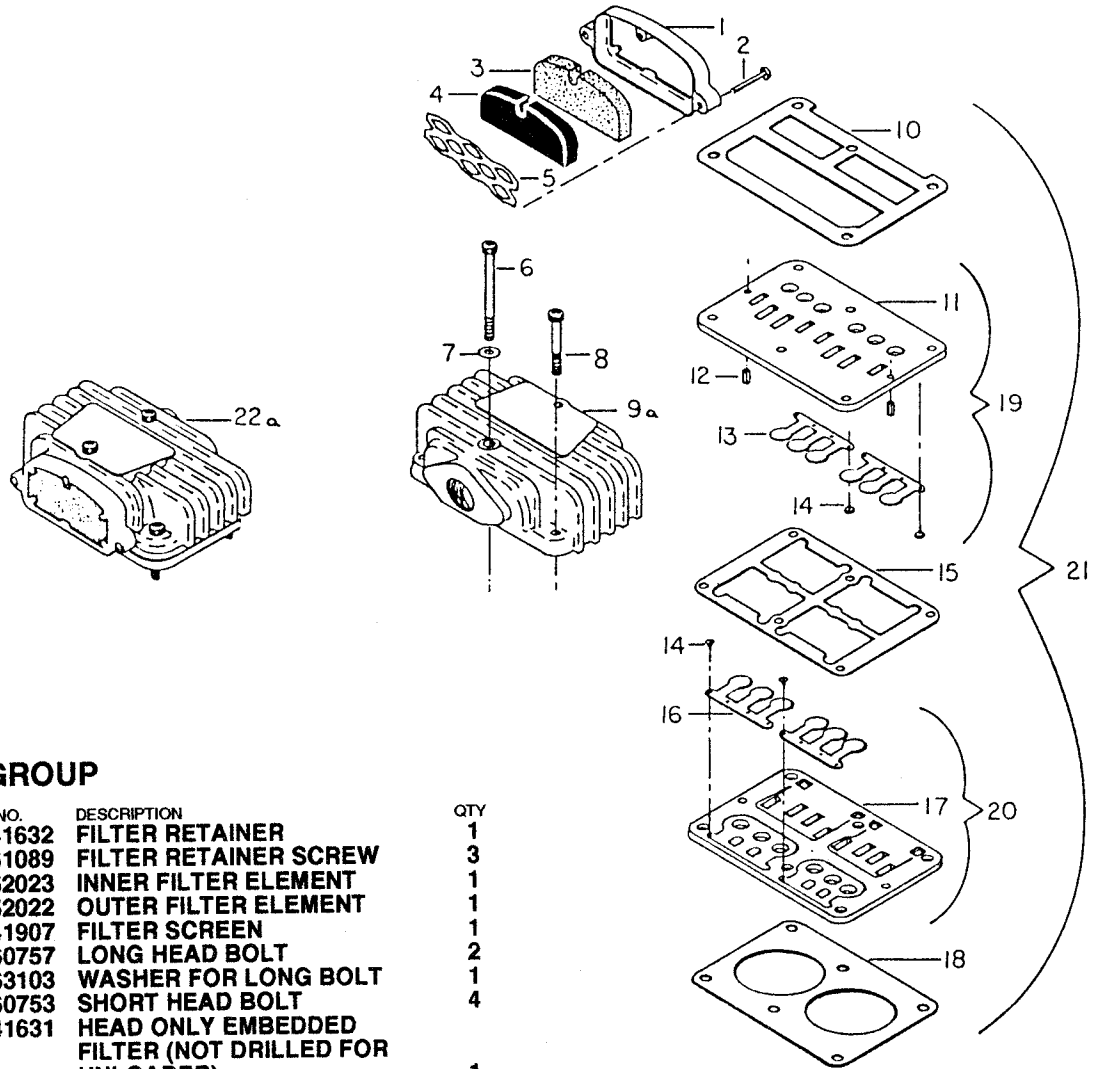
NOTE: ITEMS 21, 22 AND 23 NOT SHOWN.



CYLINDER GROUP

ITEM	PART NO.	DESCRIPTION	QTY
1.	76039417	BOTTOM GASKET	1
2.	70014885	CYLINDER	1
3.	70014886	COMPRESSION RING (INSIDE BEVEL EDGE UP)	4
4.	70014887	COMPRESSION RING (SQUARE GROOVE DOWN)	2
5.	70014888	OIL RING	2
6.	70014890	PISTON PIN	2
7.	70143975	SNAP RING	4
8.	70029133	PISTON	2
9.	70029137	CONNECTING ROD	2
10.	70014930	CONNECTING ROD BOLT	4
	51014938	COMPLETE SET OF RINGS	1
	70143972	PISTON W/PIN & RINGS	2
	51392125	COMPLETE COMPRESSOR GASKET SET	1





HEAD GROUP

ITEM	PART NO.	DESCRIPTION	QTY
1.	70141632	FILTER RETAINER	1
2.	72061089	FILTER RETAINER SCREW	3
3.	70052023	INNER FILTER ELEMENT	1
4.	70052022	OUTER FILTER ELEMENT	1
5.	70141907	FILTER SCREEN	1
6.	72060757	LONG HEAD BOLT	2
7.	72063103	WASHER FOR LONG BOLT	1
8.	72060753	SHORT HEAD BOLT	4
9A.	70141631	HEAD ONLY EMBEDDED FILTER (NOT DRILLED FOR UNLOADER)	1
10.	76391363	DRILLED FOR UNLOADER) GASKET (HEAD/TOP VALVE PLATE)	1 1REF
11.		TOP VALVE PLATE ONLY (INTAKE)	1REF
12.		SPIRAL PIN	2REF
13.		REED VALVE ONLY (INTAKE)	2REF
14.		REED VALVE SCREW	8REF
15.		GASKET (VALVE PLATE/CYL)	1REF
16.		REED VALVE ONLY (DISCHARGE)	2REF
17.		BOTTOM VALVE PLATE ONLY (DISCHARGE)	1REF
18.		GASKET (VALVE PLATE/CYL)	1REF
19.		TOP VALVE PLATE W/REED VALVE ASSEMBLED	1REF
20.		BOTTOM VALVE PLATE W/REED VALVE ASSEMBLED	1REF
21.	70054606	SET OF INTAKE/DISCHARGE VALVE PLATES ASSEMBLED (WITH TOP & BOTTOM GASKETS)	1
22A.	70731022	IMBEDDED HEAD ASM, GASKETS, VALVES, BOLTS & COMP. FILTER	1



IOWA MOLD TOOLING CO., INC.
500 HWY 18 WEST, GARNER IA 50438
515-923-3711