
Manual Part #99904400

EDSS Mechanics Truck Parts & Specifications

Revised 20091210



IOWA MOLD TOOLING CO., INC.

PO Box 189

Garner, IA 50438

Tel: 641-923-3711 FAX: 641-923-2424

Website: <http://www.imt.com>

Copyright © 2009 Iowa Mold Tooling Co., Inc.
All rights reserved

No part of this publication may be reproduced, stored in a retrieval system, or transmitted in any form or by any means, electronic, mechanical, photocopying, recording or otherwise without the prior written permission of Iowa Mold Tooling Co., Inc.

Iowa Mold Tooling Co., Inc. is an Oshkosh Corporation company.

Contents

Revisions	ii
EDSS Specifications	3
<hr/>	
Parts Ordering Information	5
<hr/>	
EDSS Parts	7
<hr/>	
EDSS Base Body Assembly (99904227).....	8
Door Layout and Components (99904294)	9
9' Body Door Installation (99904294-3).....	12
11' Body Door Assembly (99904294-4).....	13
Body Installation (99904216)	14
EDSS Bumper Assembly (99904240)	15
Master Lock Installation (99904228).....	16
Installation, Shelves (99904211)	18
7-Drawer Set, 19" Wide, 3-5-7" High Drawers (70734285).....	20
7-Drawer Set, 16.5" Wide, 3-5-7" High Drawers (70734286).....	21
Tailgate Assembly, EDSC10 (51721649).....	22
Tank Bracket Kit, 3-Bottle (51721618)	23
Tank Bracket Kit, 2-Bottle (51721619)	24
Thread Torque Chart (English).....	25
Thread Torque Chart (Metric)	26
Thread Torque Chart - Metric Bolts	27
IMT Limited Warranty Policy	29

Revisions

DATE	LOCATION	DESCRIPTION
20091210	99904294	UPDATED HARDWARE

CHAPTER 1

EDSS Specifications



SPECIFICATIONS	9-foot	11-foot
Body Rating	N/A	N/A
Body Weight	1,800 lb	2,320 lb
Body Width (including rain eaves)	84 in	84 in
Sidepack Height	42 in	42 in
Sidepack Depth	16.5 in	16.5 in
Cargo Deck Width	49 in	49 in
Step Bumper Depth	18 in	18 in
Tailgate Height	10 in	10 in
Storage Capacity	54.5 ft ³	77.3 ft ³
Angle of Departure	10.5°	10.5°
Standard Configurations	RH & LH Standard	RH & LH Standard

Door Opening Dimensions - 42" High Sidepacks		
LH 1st Vertical	20.44" W x 38.00" H	22.63" W x 38.00" H
LH 2nd Vertical	N/A	22.63" W x 38.00" H
LH 1st Horizontal	37.75" W x 16.38" H	37.75" W x 16.38" H
LH Rear	18.38" W x 38.00" H	18.38" W x 38.00" H
RH 1st Vertical	20.44" W x 38.00" H	22.63" W x 38.00" H
RH 2nd Vertical	N/A	22.63" W x 38.00" H
RH 1st Horizontal	37.75" W x 16.38" H	37.75" W x 16.38" H
RH Rear	18.38" W x 38.00" H	18.38" W x 38.00" H

Body Materials

The sidepacks are constructed of 14-gauge galvanized steel. The floor structure is constructed of 12-gauge galvanized and 1/8" deckplate steel. The step bumper is constructed of galvanized and cold rolled steel.

Body Sub-Structure

Patent pending inverted A-frame design constructed of 12-gauge galvanized material with integral crane box and rear outrigger housing.

Electrical System

The electrical system consists of a central power distribution point in the right rear compartment using automotive-style harnesses. The circuits use white wire with the circuit function printed every 3". The harness is protected by an overbraid that is heat- and cut-resistant.

Doors

The flush-mount doors are double panel and constructed of 14-gauge galvanized steel with internal formed eaves and hemmed edges. The latches are a 2-point rotary double-acting style. They are constructed of cast steel with a powder-coat finish.

Options

1. Drawers and drawer sets	5. Individual incandescent compartment lights
2. Standard adjustable shelves	6. Work lights
3. 3" high divided adjustable shelves	7. Air systems
4. Workbench vises and vise plates	

Chassis Specifications

Chassis Style	Wheelbase	Cab to Axle
Short Wheelbase	144.3" (3665 mm)	85.19" (2164 mm)
Short Wheelbase with Extended Cab	144.3" (3665 mm)	61.17" (1554 mm)

CHAPTER 2

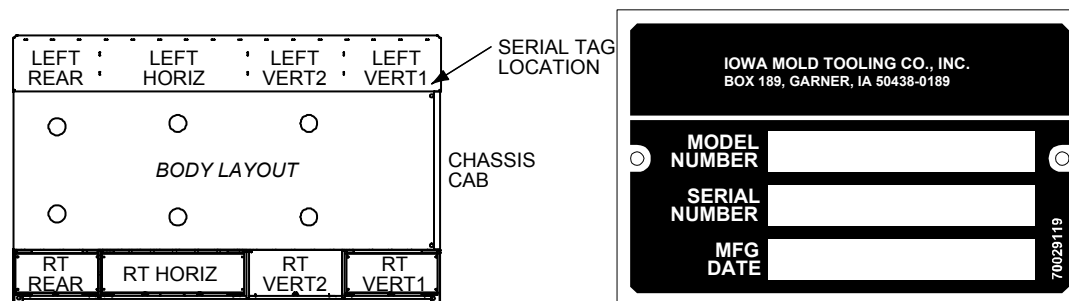
Parts Ordering Information

GENERAL

This manual contains the exploded parts drawings and accompanying parts lists for the assemblies used on this body. For optional equipment, refer to the appropriate service manual.

BODY IDENTIFICATION

Every IMT body has an identification placard (see figure). This placard is attached in the upper left hand corner of the left vertical 1 compartment.



When ordering parts, communicating warranty information, or referring to the unit in correspondence, always include the serial number and model numbers. All inquiries should be addressed to:

Iowa Mold Tooling Co., Inc.
 Box 189, Garner, IA 50438-0189
 Telephone: 641-923-3711
 Technical Support Fax: 641-923-2424

PARTS IDENTIFICATION

To insure proper replacement parts are received, specify the complete number/letter sequence for any part requested. The parts sections of this manual can assist you in determining the correct part number.

ORDERING REPAIR PARTS

When ordering replacement parts:

- 1 Give the model number of the unit.
- 2 Give the serial number of the unit.
- 3 Specify the complete part number. When ordering cylinder parts, or one of the main weldments, always give the stamped part number.

- 4 Give a complete description of the part.
- 5 Specify the quantity required.
- 6 Fill in your serial number to assist in future replacement parts ordering.

SERIAL NUMBER:

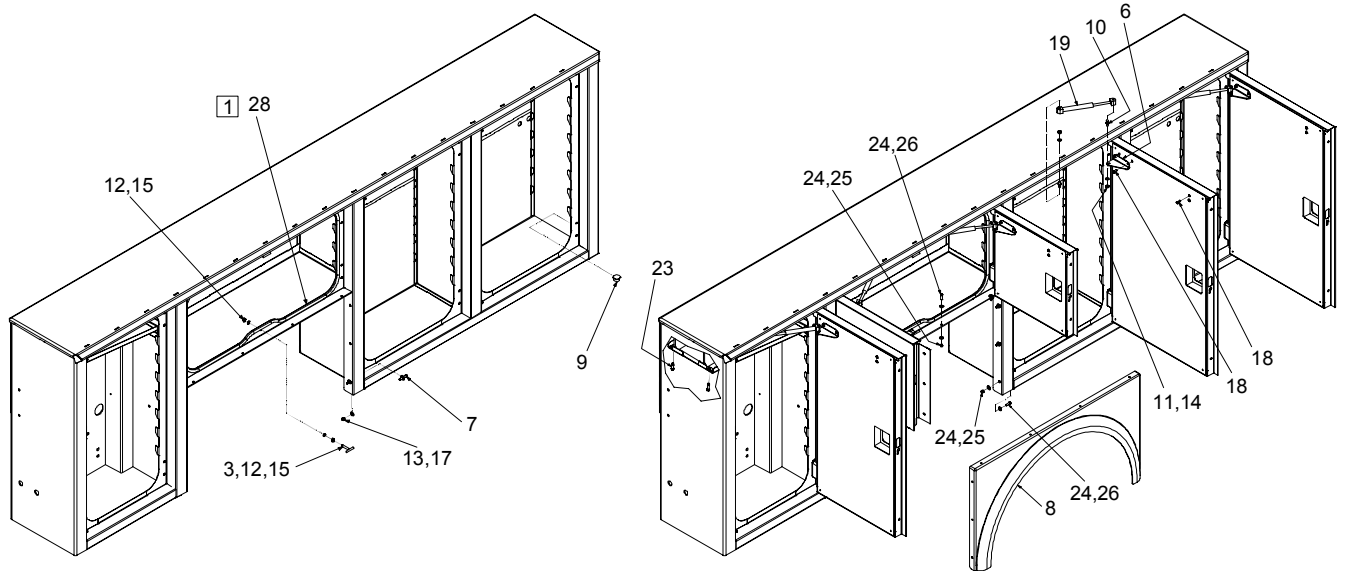
CHAPTER 3

EDSS Parts

In This Chapter

EDSS Base Body Assembly (99904227)	7
Door Layout and Components (99904294)	9
9' Body Door Installation (99904294-3)	11
11' Body Door Assembly (99904294-4)	13
Body Installation (99904216)	14
EDSS Bumper Assembly (99904240)	15
Master Lock Installation (99904228)	16
Installation, Shelves (99904211)	17
7-Drawer Set, 19" Wide, 3-5-7" High Drawers (70734285)	19
7-Drawer Set, 16.5" Wide, 3-5-7" High Drawers (70734286)	21
Tailgate Assembly, EDSC10 (51721649)	22
Tank Bracket Kit, 3-Bottle (51721618)	23
Tank Bracket Kit, 2-Bottle (51721619)	24
Thread Torque Chart (English)	24
Thread Torque Chart (Metric)	26
Thread Torque Chart - Metric Bolts	27

EDSS Base Body Assembly (99904227)



NOTE (SEE REFERENCE NUMBER IN BOX):

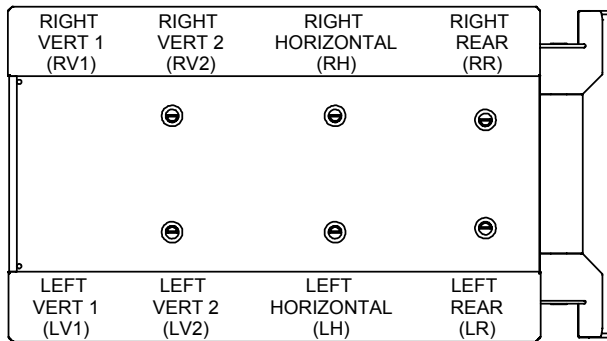
- 1 START AND STOP WEATHERSTRIP HERE IN DOUBLE DOOR COMPARTMENTS.

99904227 EDSS PARTS LIST

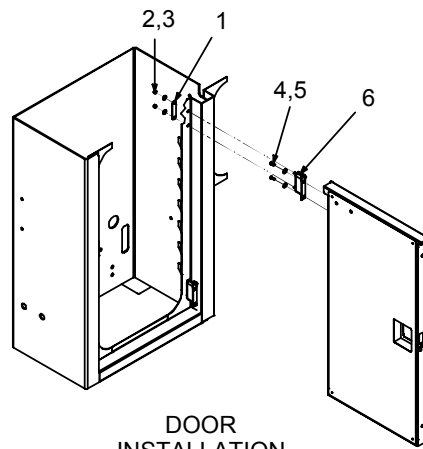
ITEM	PART #	DESCRIPTION	KIT	EDSS-9'	EDSS-11'
2.	51721641	HARDWARE KIT-WHEEL SKIRTS	REF	1	1
3.	52722406	STRIKER BOLT .300 SS DBL		4	4
5.	60134420	BRACKET-DOOR SPRING, FORWARD		4	5
6.	60134421	BRACKET-DOOR SPRING, REAR		4	5
7.	60134427	STRIKER BOLT .300 SS		8	12
8.	60134501	SKIRT		2	2
9.	70034366	PLUG-PLASTIC BUTTON		6	8
10.	71411231	BALL STUD-PNEUMATIC SPRING		16	20
11.	72062001	NUT .31-18 HEX		16	20
12.	72062163	NUT M 8 X 1.25		8	8
13.	72601958	WASHER-BONDED M8 PLATED		8	12
14.	72063001	WASHER-FLAT 0.25		32	40
15.	72063281	WASHER-LOCK M8 STAINLESS STEEL		8	8
16.					
17.	72062355	NUT M 8 X 1.25 HEX NYLOC STAINLESS STEEL		8	12
18.	72602019	SCREW-MACHINERY M 6-1.00X 16 BUTTONHEAD STAINLESS STEEL		28	36
19.	73050188	SPRING-PNEUMATIC 40 3in STROKE		8	10
23.					
24.	72601785	WASHER FLAT M6	#2	40	40
25.	72601953	NUT-M6 X 1 HEX NYLOC ZINC	#2	20	20
26.	72601957	SCREW-MACHINE M6-1X25 BUTTONHEAD CAP SCREW STAINLESS STEEL	#2	20	20

99904227 EDSS PARTS LIST					
ITEM	PART #	DESCRIPTION	KIT	EDSS-9'	EDSS-11'
27.	89393638	WEATHERSTRIP		8	8
28.	89387087	WEATHERSTRIP		1	1
REV. F 20090920					

Door Layout and Components (99904294)



COMPARTMENT
DOOR LOCATION

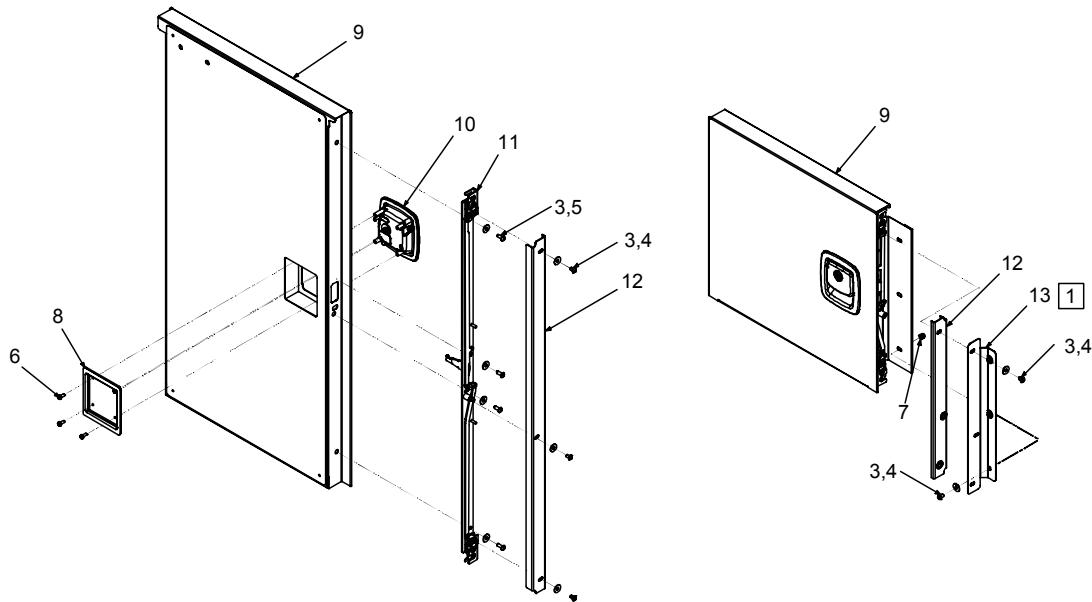


DOOR
INSTALLATION

LOCATION	EDSS-9'	EDSS-11'
LEFT VERTICAL 1 (FRONT)	70734431	70734429
LEFT VERTICAL 1 (REAR)	N/A	N/A
LEFT VERTICAL 2	N/A	70734429
RIGHT VERTICAL 1 (FRONT)	70734432	70734430
RIGHT VERTICAL 1 (REAR)	N/A	N/A
RIGHT VERTICAL 2	N/A	70734430
LEFT HORIZONTAL (FRONT)	70734437	70734437
LEFT HORIZONTAL (REAR)	70734438	70734438
RIGHT HORIZONTAL (FRONT)	70734439	70734439
RIGHT HORIZONTAL (REAR)	70734440	70734440
LEFT REAR	70734441	70734441
RIGHT REAR	70734442	70734442

99904294 PARTS LIST			
ITEM	PART #	DESCRIPTION	QUANTITY
1.	60133711	WASHER-DOUBLE M 6X 2.73	1
2.	72601785	WASHER-FLAT M 6	2
3.	72601953	NUT M 6 X 1.00 HEX NYLOC ZINC	1
4.	72602037	CAP SCREW	1
5.	72063284	HARDENED WASHER	
6.	72661663	HINGE-DOOR, METRIC	1
REV. E 20091017			

99904294-2 DOOR ASSEMBLY



NOTES:

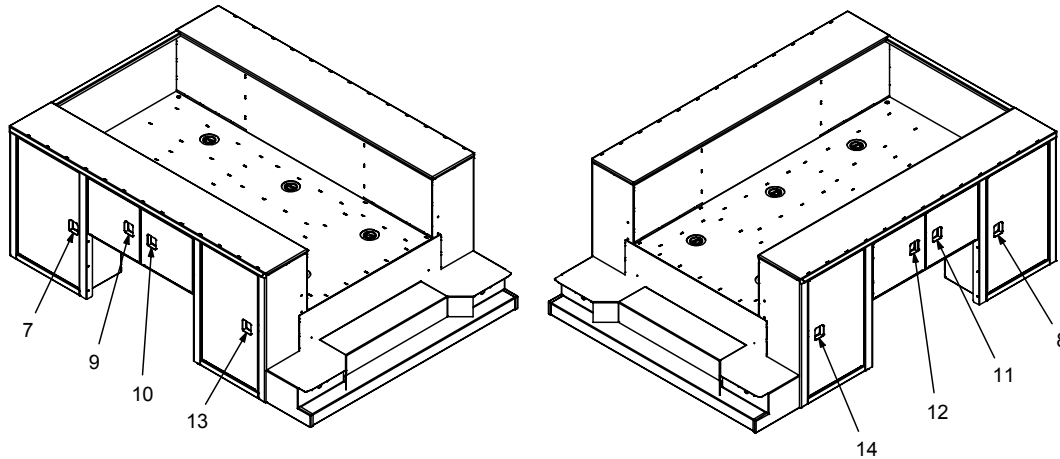
1 ITEM #13, BRACE, INSTALLED ON ALL DOUBLE DOORS.

99904294-2 PARTS LIST				
ITEM	PART #	DESCRIPTION	KIT #	QUANTITY
1.	91722603	HARDWARE KIT-DOOR ASSEMBLY	REF	1
2.	91722604	HARDWARE KIT-DOUBLE DOOR ASSEMBLY	REF	AS REQUIRED
3.	72063276	WASHER-FLAT M 6 SS	1,2	AS REQUIRED
4.	72602018	SCREW-MACHINERY M 6-1.00X 10 BUTTONHEAD STAINLESS STEEL	1,2	AS REQUIRED
5.	72602019	SCREW-MACHINERY M 6-1.00X 16 BUTTONHEAD STAINLESS STEEL	1	AS REQUIRED
6.	72602021	SCREW-THREAD CUT #10-24X.50 PPH Z	1	4
7.	72062366	NUT M 6 X 1.00 ACORN STAINLESS STEEL	2	AS REQUIRED
8.	72661679	LATCH RETAINER		1
9.	SEE CHART*	DOOR		1
10.	SEE CHART*	LATCH HANDLE		1
11.	SEE CHART*	LATCH PACK		1
12.	SEE CHART*	LATCH COVER		1
13.	SEE CHART*	COVER BRACE		AS REQUIRED
* DOOR COMPONENT CHART				
REV E 20091209				

DOOR COMPONENT CHART

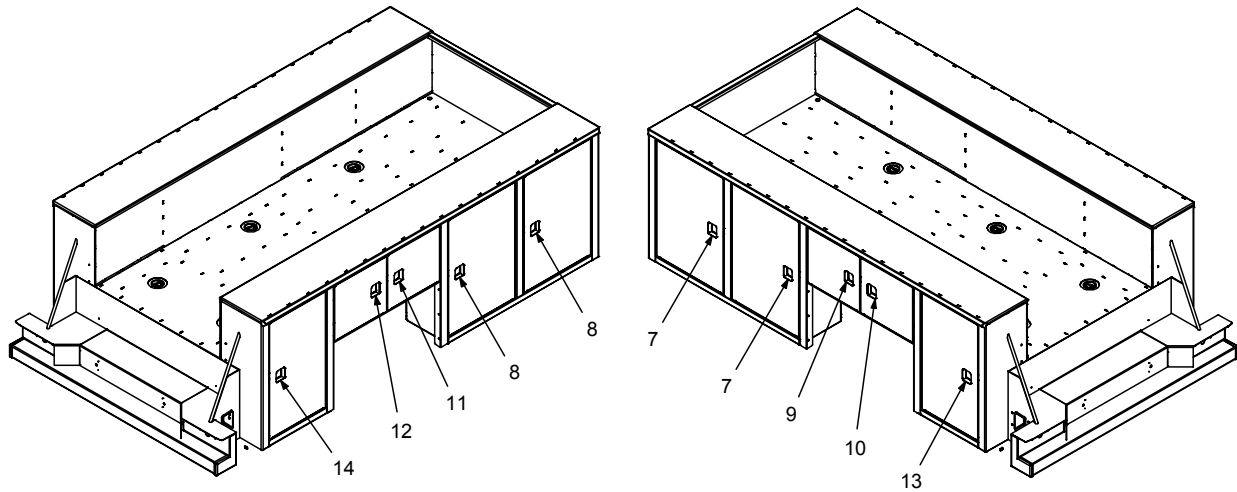
DOOR ASSEMBLY	DOOR ASSEMBLY DESCRIPTION DETAILS				DOOR (ITEM #9)	HANDLE (ITEM #10)	LATCH PACK (ITEM #11)	COVER (ITEM #12)	BRACE (ITEM #13)
	SIDE	SET-UP	DOOR HEIGHT	DOOR WIDTH					
51722587	LEFT HAND		100 cm (39.38")	66.8 cm (26.28")	70734429	72661671	72661673	60134713	NONE
51722588	RIGHT HAND		100 cm (39.38")	66.8 cm (26.28")	70734430	72661672	72661674	60134714	NONE
51722589	LEFT HAND		100 cm (39.38")	61 cm (24.06")	70734431	72661671	72661673	60134713	NONE
51722590	RIGHT HAND		100 cm (39.38")	61 cm (24.06")	70734432	72661672	72661674	60134714	NONE
51722591	LEFT HAND		100 cm (39.38")	52 cm (20.53")	70734433	72661671	72661673	60134713	NONE
51722592	RIGHT HAND	DOUBLE	100 cm (39.38")	52 cm (20.53")	70734434	72661672	72661674	60134714	60134719
51722593	RIGHT HAND		140 cm (55.38")	52 cm (20.53")	70734435	72661672	72661678	60134718	NONE
51722594	RIGHT HAND	DOUBLE	140 cm (55.38")	52 cm (20.53")	70734436	72661671	72661677	60134717	60134722
51722595	LEFT HAND		47.85 cm (18.84")	52 cm (20.53")	70734437	72661671	72661675	60134715	NONE
51722596	LEFT HAND	DOUBLE	47.85 cm (18.84")	52 cm (20.53")	70734438	72661672	72661676	60134716	60134721
51722597	RIGHT HAND		47.85 cm (18.84")	52 cm (20.53")	70734439	72661672	72661676	60134716	NONE
51722598	RIGHT HAND	DOUBLE	47.85 cm (18.84")	52 cm (20.53")	70734440	72661671	72661675	60134715	60134720
51722599	LEFT HAND		100 cm (39.38")	55.9 cm (22.00")	70734441	72661671	72661673	60134713	NONE
51722600	RIGHT HAND		100 cm (39.38")	55.9 cm (22.00")	70734442	72661672	72661674	60134714	NONE

9' Body Door Installation (99904294-3)



99904294-3 PARTS LIST			
ITEM	PART #	DESCRIPTION	QUANTITY
1.	60133711	WASHER-DOUBLE M 6X 2.73	16
2.	72601785	WASHER-FLAT M 6	32
3.	72601953	NUT M 6 X 1.00 HEX NYLOC ZINC	32
4.	72602037	SCREW-MACHINERY M 6-1.00X 16 BUTTONHEAD ZINC	32
5.	72063284	WASHER-FLAT M6 HARDENED	32
6.	72661663	HINGE-DOOR	16
7.	70734431	DOOR-ASSEMBLY LEFT HAND 100 cm (39.38") X 61 cm (24.06")	1
8.	70734432	DOOR-ASSEMBLY RIGHT HAND 100 cm (39.38") X 61 cm (24.06")	1
9.	70734437	DOOR-ASSEMBLY LEFT HAND 47.9 cm (18.84") X 52.1 cm (20.53")	1
10.	70734438	DOOR-ASSEMBLY LEFT HAND 47.9 cm (18.84") X 52.1 cm (20.53") DOUBLE	1
11.	70734439	DOOR-ASSEMBLY RIGHT HAND 47.9 cm (18.84") X 52.1 cm (20.53")	1
12.	70734440	DOOR-ASSEMBLY RIGHT HAND 47.9 cm (18.84") X 52.1 cm (20.53") DOUBLE	1
13.	70734441	DOOR-ASSEMBLY LEFT HAND 100 cm (39.38") X 55.9 cm (22.00)	1
14.	70734442	DOOR-ASSEMBLY RIGHT HAND 100 cm (39.38") X 55.9 cm (22.00)	1
REV. E 20091209			

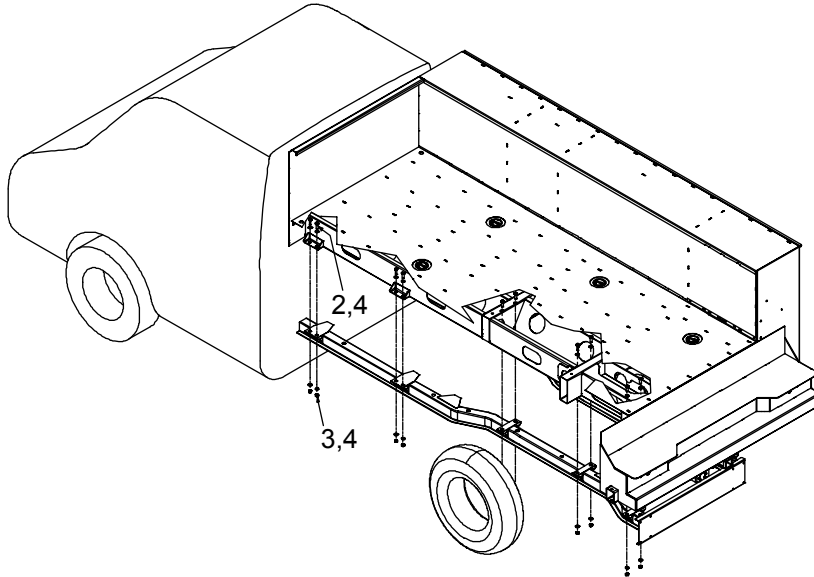
11' Body Door Assembly (99904294-4)



99904294-4 PARTS LIST

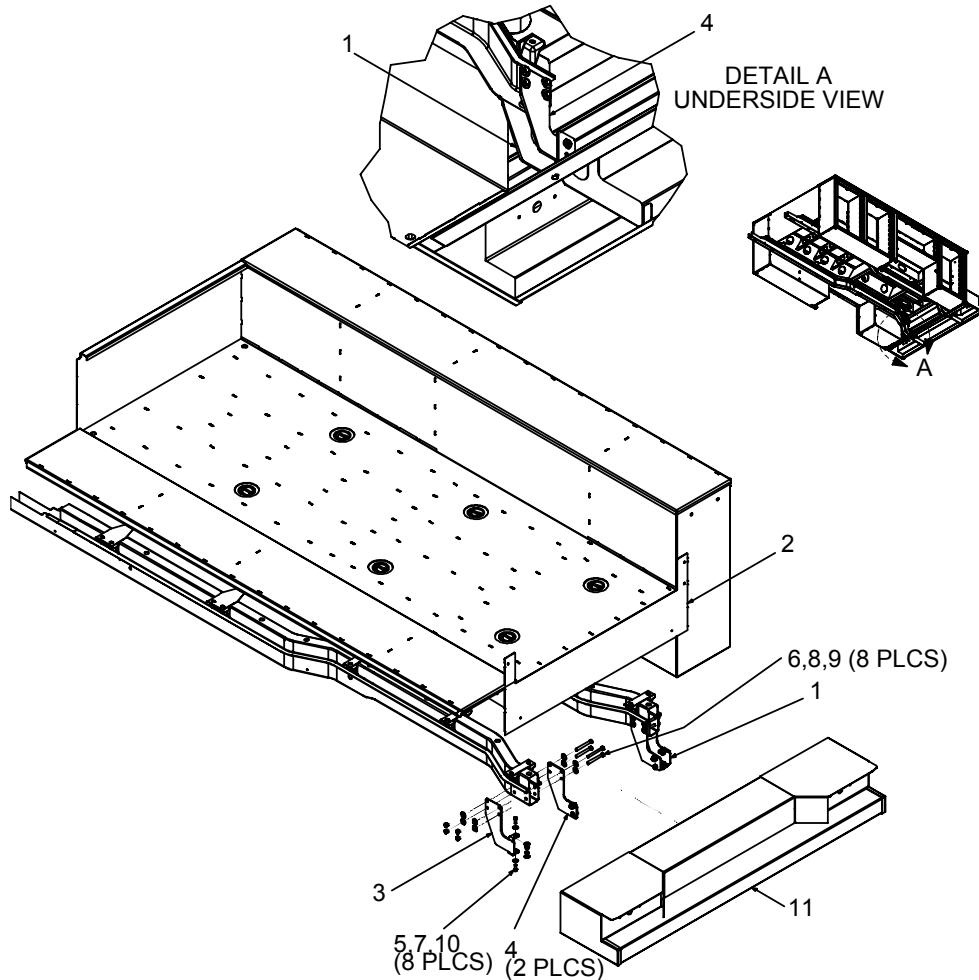
ITEM	PART #	DESCRIPTION	QUANTITY
1.	60133711	WASHER-DOUBLE M 6X 2.73	20
2.	72601785	WASHER-FLAT M 6	40
3.	72601953	NUT M 6 X 1.00 HEX NYLOC ZINC	40
4.	72602037	SCREW-MACHINERY M 6-1.00X 16 BUTTONHEAD ZINC	40
5.	72063284	WASHER-FLAT M6 HARDENED	40
6.	72661663	HINGE-DOOR, METRIC	20
7.	70734429	DOOR-ASSEMBLY, LEFT HAND, 100 cm (39.38") X 66.7 cm (26.28")	2
8.	70734430	DOOR-ASSEMBLY, RIGHT HAND, 100 cm (39.38") X 66.7 cm (26.28")	2
9.	70734437	DOOR-ASSEMBLY, LEFT HAND, 47.8 cm (18.84") X 52 cm (20.53")	1
10.	70734438	DOOR-ASSEMBLY, LEFT HAND, 47.8 cm (18.84") X 52 cm (20.53") DOUBLE	1
11.	70734439	DOOR-ASSEMBLY, RIGHT HAND, 47.8 cm (18.84") X 52 cm (20.53")	1
12.	70734440	DOOR-ASSEMBLY, RIGHT HAND, 47.8 cm (18.84") X 52 cm (20.53") DOUBLE	1
13.	70734441	DOOR-ASSEMBLY, LEFT HAND, 100 cm (39.38") X 55.9 cm (22.00")	1
14.	70734442	DOOR-ASSEMBLY, RIGHT HAND, 100 cm (39.38") X 55.9 cm (22.00")	1
REV. E 20091209			

Body Installation (99904216)



99904216 PARTS LIST			
ITEM	PART #	DESCRIPTION	QUANTITY
1.	70144807	SPRING-DIE 1.19 X .63 X 1.5 LG	4
2.	72601796	CAP SCR M12-1.75X 40 HHZ	16
3.	72601800	WASHER-FLAT M12	40
4.	72601496	CAP SCR M12-1.75X 80 HHZ	4
5.	72062290	NUT M12 CENTER LOCKING	20
REV A 20080213			

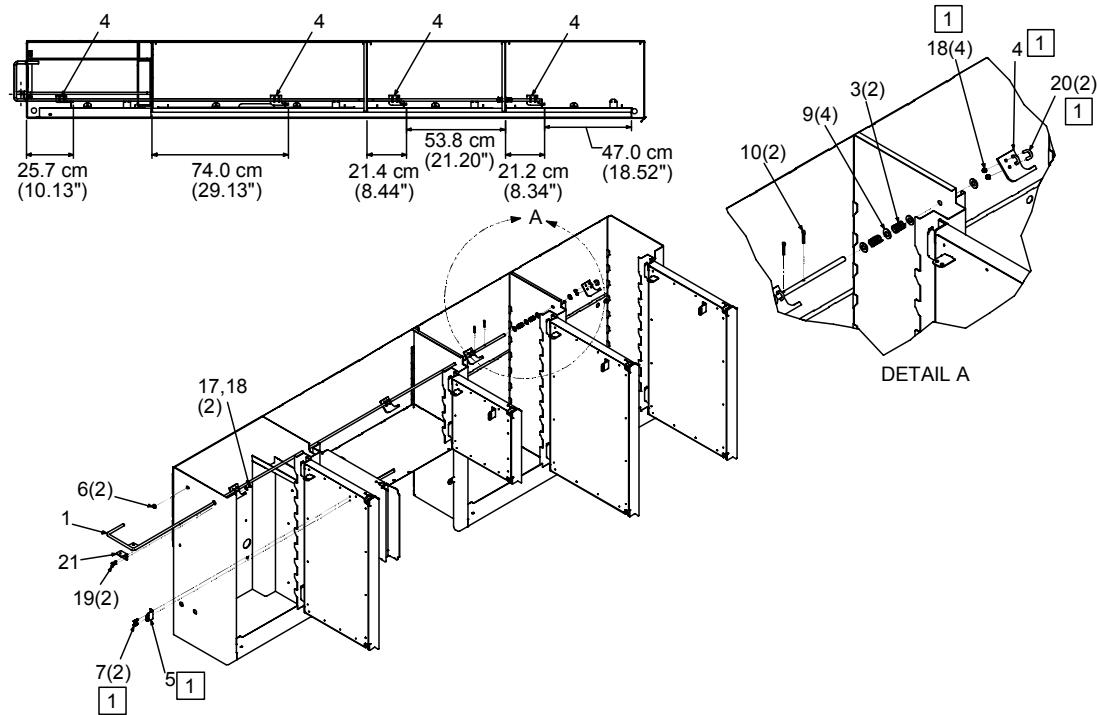
EDSS Bumper Assembly (99904240)



99904240 PARTS LIST

ITEM	PART #	DESCRIPTION	QUANTITY
1.	60131637	SHEAR PLATE - REAR EDSS LH	1
2.	60131638	COVER PLT - FLOOR EDSS	1
3.	60131646	SHEAR PLATE - REAR EDSS RH	1
4.	60131673	SHEAR PLATE - REAR EDSS LH	2
5.	72060437	CAP SCR M10-1.50X 30 HHZ	8
6.	72062290	NUT M12 CENTER LOCKING	8
7.	72063226	WASHER-FLAT M10	16
8.	72601800	WASHER-FLAT M12	16
9.	72601886	CAP SCR M12-1.75X 110 HHZ	8
10.	72601887	NUT M10 CENTER LOCKING	8
11.	99904233	WORKBENCH-D(II)-14IN STD EDSS	1
REV. C 20080213			

Master Lock Installation (99904228)



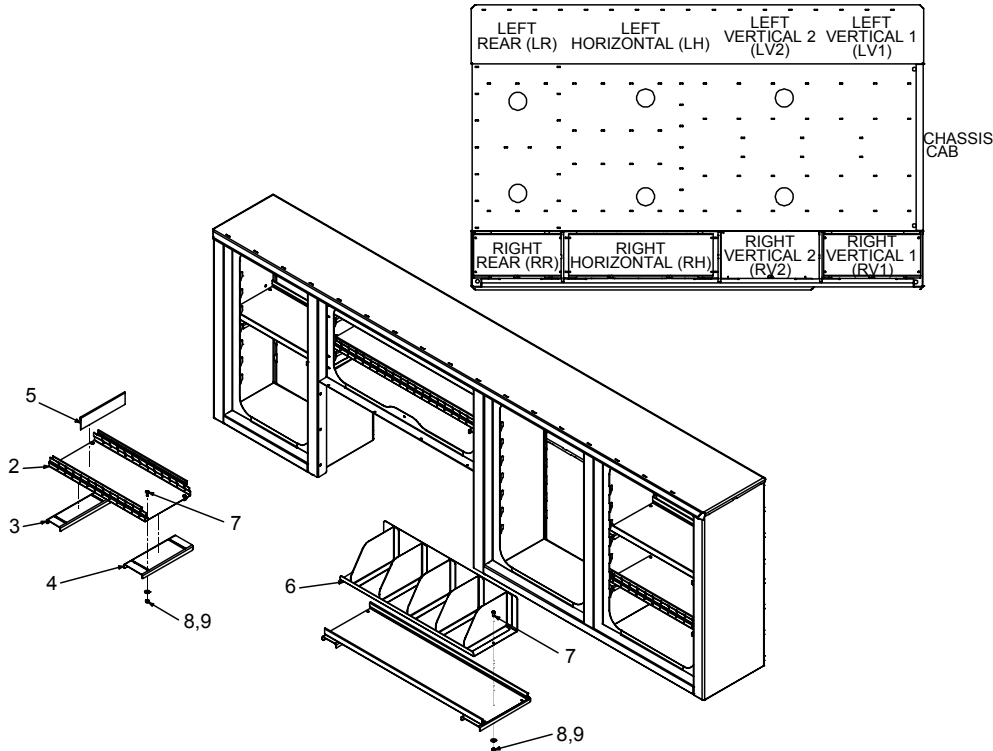
NOTES (SEE REFERENCE NUMBER IN BOX):

- 1 QUANTITY LISTED IS PER COMPARTMENT.
- 2 ONLY THE RIGHT HORIZONTAL SIDEPACK IS SHOWN. DUPLICATE ON LEFT SIDE.

99904228 PARTS LIST				
ITEM	PART #	DESCRIPTION	2.74 m (9-FOOT) (KIT # 51721240)	3.35 m (11-FOOT) (KIT # 51720984)
1.	52720928	MASTER LOCK ROD-3.35 m (11-FOOT)		2
2.	52721239	MASTER LOCK ROD-2.74 m (9-FOOT)	2	
3.	60010351	SPRING-COMPRESSION	4	4
4.	60123529	MASTER LOCK-FINGER	6	8
5.	60123530	MASTER LOCK-RECEPTACLE	6	8
6.	70034277	GROMMET-POLY 1.3 cm INSIDE DIAMETER	4	4
7.	72601971	SCREW-SHEET METAL M 6X 20 HWPh Z	12	16
9.	72063005	WASHER .50 FLAT	8	8
10.	72066192	COTTER PIN .19X1.00	2	2
17.	72601785	WASHER-FLAT M 6	4	4
18.	72601953	NUT M 6 X 1.00 HEX NYLOC ZINC	4	4
19.	72601957	SCREW-MACH M 6-1.00X 25 BUTTON-HEAD CAPSCREW STAINLESS STEEL	4	4

99904228 PARTS LIST				
ITEM	PART #	DESCRIPTION	2.74 m (9-FOOT) (KIT # 51721240)	3.35 m (11-FOOT) (KIT # 51720984)
20.	72601970	U-BOLT	6	8
21.	60132615	TAB-MASTER LOCK REAR PANEL RIGHT HAND	1	1
21.	60132614	TAB-MASTER LOCK REAR PANEL LEFT HAND	1	1
REV. B 20080521				

Installation, Shelves (99904211)

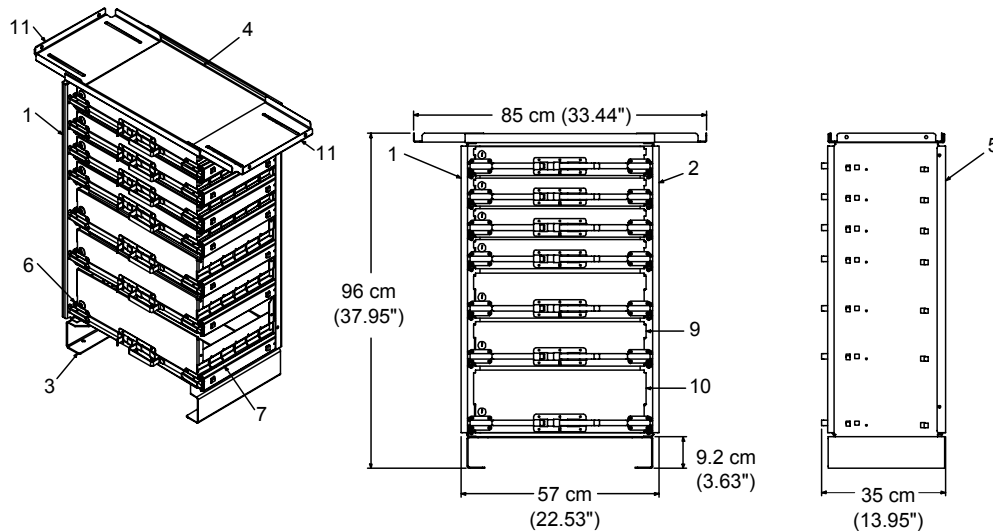


99904211 PARTS LIST			
ITEM	PART #	DESCRIPTION	QUANTITY
1.	51721501	HARDWARE KIT, EDS BOLT-IN / ADJUSTABLE SHELVES	1
2.	VARIOUS	SHELF-SEE CHART	A/R
3.	VARIOUS	SHELF END-SEE CHART	A/R
4.	VARIOUS	SHELF END-SEE CHART	A/R
4.	60131516	DIVIDER, DRAWER	A/R
6.	52720954	BOOKSHELF, 20 cm (8") HIGH X 91 cm (36") LONG X 30.5 cm (12") DEEP	A/R
6.	52720955	BOOKSHELF, 20 cm (8") HIGH X 51 cm (20") LONG X 30.5 cm (12") DEEP	A/R
7.	72601278	CAP SCREW M8-1.25X20 HHGR5Z (PART OF #1)	A/R
8.	72601952	NUT M8 HEX NYLOCK (PART OF #1)	A/R
9.	72601799	WASHER M8 FLAT (PART OF #1)	A/R
REV. C 20090928			

SHELF & SHELF END CHART						
COMPARTMENT	ITEM # 2	ITEM #3	ITEM #4		60131516	SHELF
LOCATION	SHELF	SHELF END	SHELF END	SHELF WIDTH	SHELF DIVIDER	KIT NUMBER
2.74 m (9') VERTICAL 1	60132081	60131517	60131518	67 cm (26.33")		51721237
	60132082	60131517	60131518	67 cm (26.33")	6 INCLUDED	51721238

3.35 m (11') VERTICAL 1 / VERTICAL 2	60131514	60131517	60131518	72 cm (28.44")		51720962
	60131515	60131517	60131518	72 cm (28.44")	6 INCLUDED	51720963
LEFT HORIZONTAL / RIGHT HORIZONTAL	60131507	60131506	60131518	108 cm (42.50")		51720965
	60131512	60131506	60131518	108 cm (42.50")	10 INCLUDED	51720966
LEFT REAR / RIGHT REAR	60131505	60131506	60131518	65.6 cm (25.84")		51720967
	60131510	60131506	60131518	65.6 cm (25.84")	5 INCLUDED	51720968

7-Drawer Set, 19" Wide, 3-5-7" High Drawers (70734285)

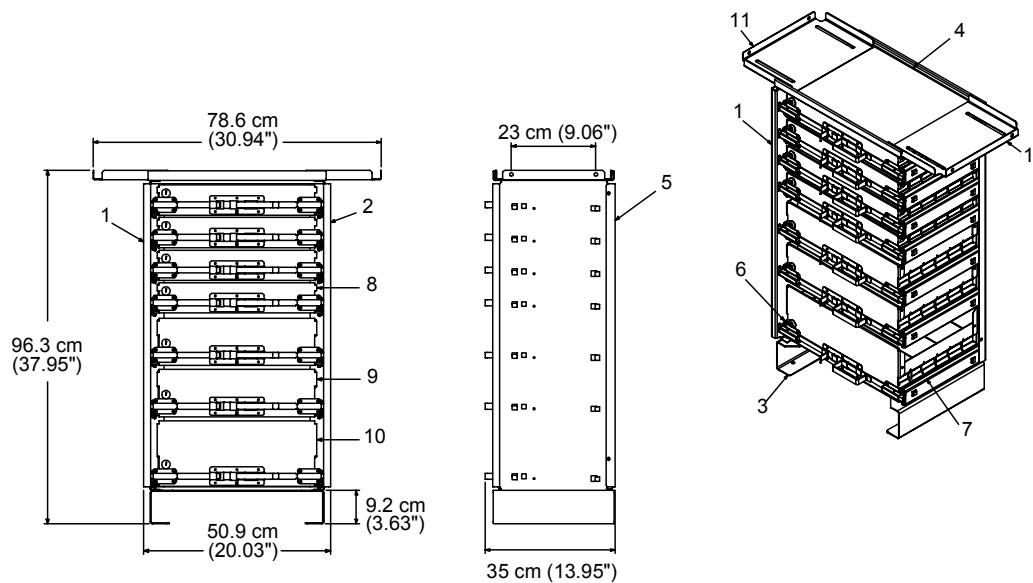


NOTES:

- 1 LOOSE FASTENER KIT 51720677, INCLUDED WITH EACH DRAWER SET, IS REQUIRED TO BOLT DRAWER ASSEMBLY IN PLACE. KIT INCLUDES (4) CAP SCREWS, (8) MACHINERY SCREWS, (12) 1/4-20 NUTS, (2) BONDED PLATED WASHERS, AND (4) FLAT WASHERS.

70734285 PARTS LIST			
ITEM	PART #	DESCRIPTION	QUANTITY
1.	60132037	PANEL-DRAWER SIDE, 30.5 cm (12") DEEP, LEFT	1
2.	60132038	PANEL-DRAWER SIDE, 30.5 cm (12") DEEP, RIGHT	1
3.	60132036	RISER-ROLLOUT DRAWERS 48 cm (19") WIDE X 30.5 cm (12") DEEP X 10 cm (4") HIGH	1
4.	60132035	SHELF-ROLLOUT DRAWERS 48 cm (19") WIDE X 30.5 cm (12") D	1
5.	60132039	PANEL-DRAWER BACK 48 cm (19") WIDE X 82.6 cm (32.5") HIGH	1
6.	70734291	DRAWER SLIDE WITH TABS, LEFT	7
7.	70734292	DRAWER SLIDE WITH TABS, RIGHT	7
8.	70734287	DRAWER WITH DIVIDERS, PAINTED, 7.6 cm (3") HIGH X 30.5 cm (12") DEEP X 48 cm (19") WIDE, SINGLE PULL	4
9.	70734289	DRAWER WITH DIVIDERS, PAINTED, 12.7 cm (5") HIGH X 30.5 cm (12") DEEP X 48 cm (19") WIDE, SINGLE PULL	2
10.	70734290	DRAWER WITH DIVIDERS, PAINTED, 17.8 cm (7") HIGH X 30.5 cm (12") DEEP X 48 cm (19") WIDE, SINGLE PULL	1
11.	60132040	SHELF-ROLLOUT DRAWERS, ADJUSTABLE	2
12.	60132043	MAT-RUBBER	7
REV. C 20091001			

7-Drawer Set, 16.5" Wide, 3-5-7" High Drawers (70734286)

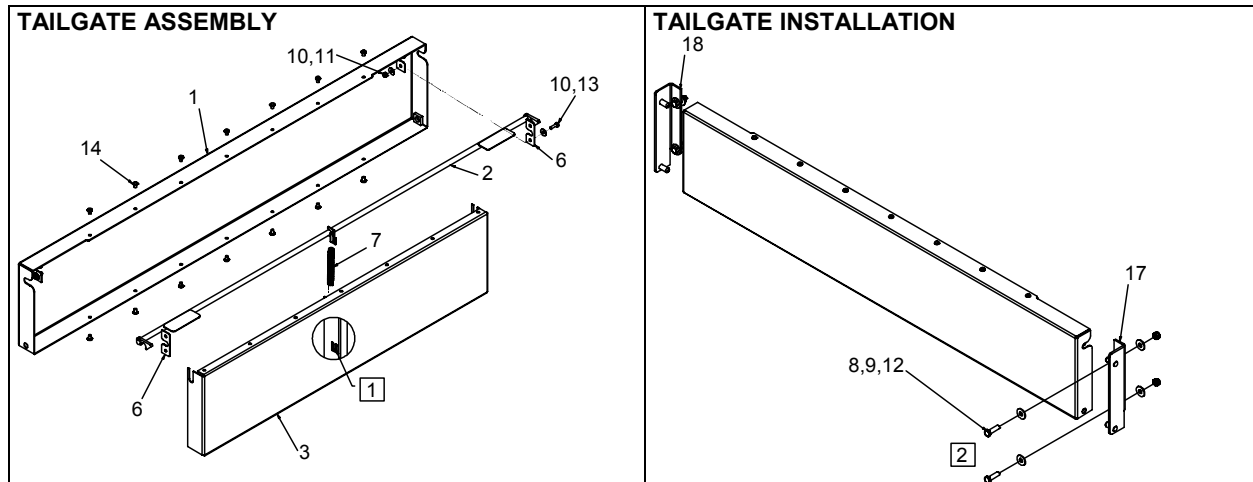


NOTES:

- 1 LOOSE FASTENER KIT 51720677, INCLUDED WITH EACH DRAWER SET, IS REQUIRED TO BOLT DRAWER ASSEMBLY IN PLACE. KIT INCLUDES (4) CAP SCREWS, (8) MACHINERY SCREWS, (12) 1/4-20 NUTS, (2) BONDED PLATED WASHERS, AND (4) FLAT WASHERS.

70734286 PARTS LIST			
ITEM	PART #	DESCRIPTION	QUANTITY
1.	60132037	PANEL-DRAWER SIDE, LEFT	1
2.	60132038	PANEL-DRAWER SIDE, RIGHT	1
3.	60132050	RISER-ROLLOUT DRAWERS 42 cm (16.5") WIDE X 30.5 cm (12") DEEP X 10 cm (4") HIGH	1
4.	60132049	SHELF-ROLLOUT DRAWERS 42 cm (16.5") WIDE X 30.5 cm (12") DEEP	1
5.	60132051	PANEL-DRAWER BACK 42 cm (16.5") WIDE X 82.6 cm (32.5") HIGH	1
6.	70734291	DRAWER SLIDE WITH TABS, LEFT	7
7.	70734292	DRAWER SLIDE WITH TABS, RIGHT	7
8.	70734293	DRAWER WITH DIVIDERS, PAINTED, 7.6 cm (3") HIGH X 30.5 cm (12") DEEP X 41.9 cm (16.5") WIDE, SINGLE PULL	4
9.	70734295	DRAWER WITH DIVIDERS, PAINTED, 12.7 cm (5") HIGH X 30.5 cm (12") DEEP X 41.9 cm (16.5") WIDE, SINGLE PULL	2
10.	70734296	DRAWER WITH DIVIDERS, PAINTED, 17.8 cm (7") HIGH X 30.5 cm (12") DEEP X 41.9 cm (16.5") WIDE, SINGLE PULL	1
11.	60132040	SHELF-ROLLOUT DRAWERS, ADJUSTABLE	2
12.	60132043	MAT-RUBBER	7
REV. C 20091001			

Tailgate Assembly, EDSC10 (51721649)



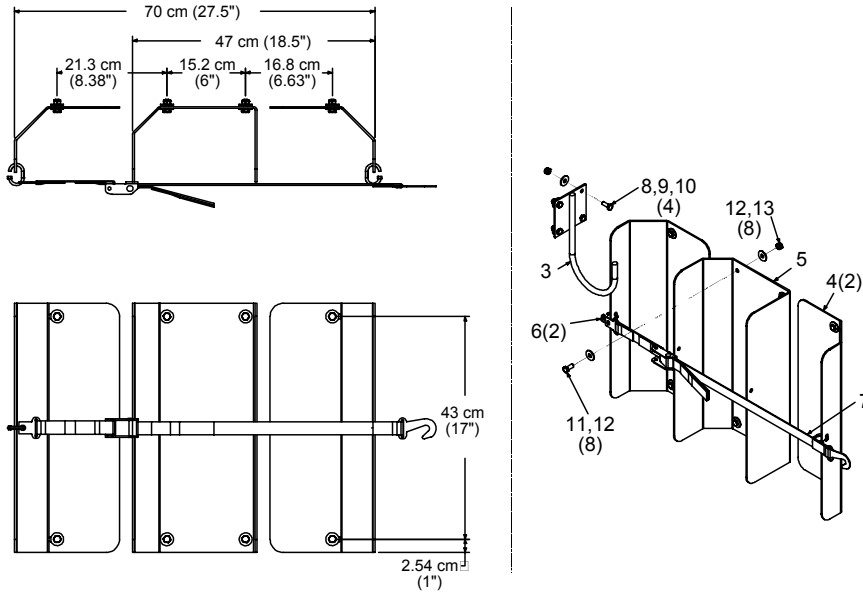
NOTES (SEE REFERENCE NUMBER IN BOX):

- 1 BOTTOM SPRING CONNECTION
- 2 TO EXISTING HOLES IN BODY
- 3 INSTALL ROD WELDMENT # 52718803 INTO SLOTS ON PANEL # 52718804.
- 4 JOIN PANEL # 52718802 OVER PANEL # 52718804.
- 5 CONNECT SPRING # 71411138 BETWEEN BRACKET ON PANEL # 52718804 AND BRACKET ON ROD # 52718803.
- 6 CONNECT PANEL # 52718802 TO PANEL # 52718804 WITH RIVET # 72661226.
- 7 INSERT LOWER MOUNTING PIN FROM MOUNTING BRACKET 52719638-52719639 INTO LOWER HOLE OF ASSEMBLED TAILGATE.
- 8 BOLT ASSEMBLY TO REAR OF BODY.

51721649 PARTS LIST

ITEM	PART #	DESCRIPTION	QUANTITY
1.	52718802	TAILGATE WELDMENT REAR COVER	1
2.	52718803	TAILGATE WELDMENT LATCH ROD	1
3.	52718804	TAILGATE WELDMENT FRONT COVER	1
4.	52719638	TAILGATE POST WELDMENT RIGHT HAND WITH SPACER	1
5.	52719639	TAILGATE POST WELDMENT LEFT HAND WITH SPACER	1
6.	60126539	BRACKET TAILGATE REAR COVER	2
7.	71411138	SPRING-EXTENSION	1
8.	72063226	WASHER-FLAT M10	8
9.	72601266	CAP SCREW M10-1.50X 35 HHZ	4
10.	72601785	WASHER-FLAT M 6	8
11.	72601953	NUT M 6 X 1.00 HEX NYLOC ZINC	4
12.	72601965	NUT M10 X 1.50 HEX NYLOC ZINC	4
13.	72601974	CAP SCREW M 6-1.00X 20 HHZ	4
14.	72661226	RIVET-ALUMINUM	14
NEW 20080801			

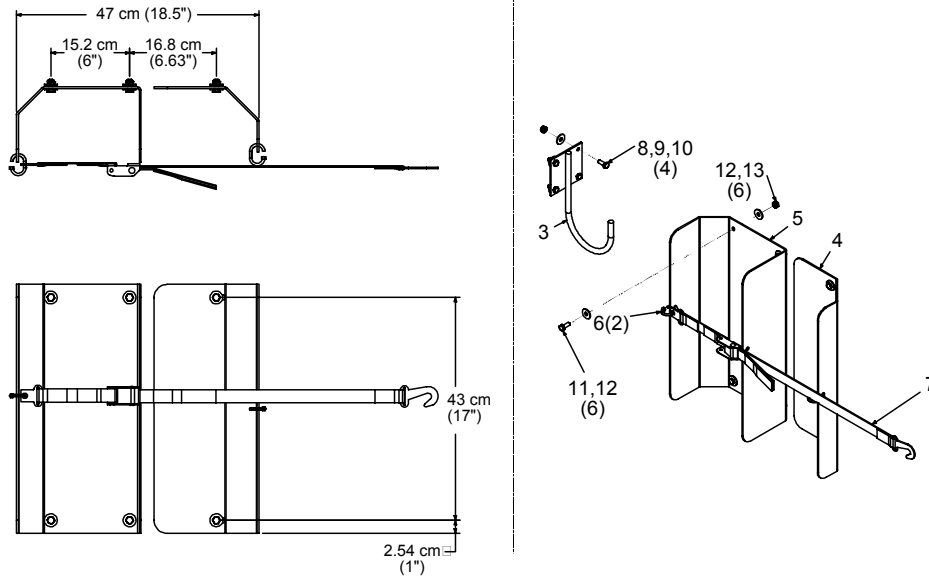
Tank Bracket Kit, 3-Bottle (51721618)



51721618 PARTS LIST



ITEM	PART #	DESCRIPTION	KIT #	QUANTITY
1.	51721501	HARDWARE KIT-BOLT-IN ADJUSTABLE SHELF	REF	1
2.	51721623	HARDWARE KIT-3-BOTTLE	REF	1
3.	52704224	HOOK-WELDMENT		1
4.	60129197	BRACKET		2
5.	60133023	BRACKET		1
6.	70058959	CHAIN CONNECTOR-THREADED .19		2
7.	70733516	STRAP-91 cm (36") BOTTLE HOLDER W/ SNAP HOOK		1
8.	72601278	CAP SCREW M 8-1.25X 20 HHZ	#1	4
9.	72601799	WASHER-FLAT M 8	#1	4
10.	72601952	NUT M 8 HEX NYLOC ZINC	#1	4
11.	72601278	CAP SCREW M 8-1.25X 20 HHZ	#2	8
12.	72601799	WASHER-FLAT M 8	#2	16
13.	72601952	NUT M 8 HEX NYLOC ZINC	#2	8
NEW 20080522				



Tank Bracket Kit, 2-Bottle (51721619)



51721619 PARTS LIST				
ITEM	PART #			
1.	51721501	HARDWARE KIT-BOLT-IN ADJUSTABLE SHELF	REF	1
2.	51721624	HARDWARE KIT-OXY/ACT 2 BOTTLE	REF	1
3.	52704224	HOOK-WELDMENT		1
4.	60129197	BRACKET		1
5.	60133023	BRACKET		1
6.	70058959	CHAIN CONNECTOR-THREADED .19		2
7.	70733516	STRAP-91 cm (36") BOTTLE HOLDER W/ SNAP HOOK		1
8.	72601278	CAP SCREW M 8-1.25X 20 HHZ	#1	4
9.	72601799	WASHER-FLAT M 8	#1	4
10.	72601952	NUT M 8 HEX NYLOC ZINC	#1	4
11.	72601278	CAP SCREW M 8-1.25X 20 HHZ	#2	6
12.	72601799	WASHER-FLAT M 8	#2	12
13.	72601952	NUT M 8 HEX NYLOC ZINC	#2	6

Thread Torque Chart (English)

FINE THREAD BOLTS (ENGLISH)					
SIZE	BOLT DIA.	GRADE 5  SAE J429 GRADE 5		GRADE 8  SAE J429 GRADE 8	
(DIA-TPI)	(INCHES)	PLAIN	PLATED	PLAIN	PLATED
		(FT-LB)	(FT-LB)	(FT-LB)	(FT-LB)
5/16-24	0.3125	19	14	27	20
3/8-24	0.375	35	26	49	35
7/16-20	0.4375	55	41	78	58
1/2-20	0.5	90	64	120	90
9/16-18	0.5625	120	90	170	130
5/8-18	0.625	170	130	240	180
3/4-16	0.75	300	225	420	315
7/8-11	0.875	445	325	670	500
1-12	1	645	485	995	745
1 1/8-12	1.125	890	670	1445	1085
1 1/4-12	1.25	1240	930	2010	1510
1 3/8-12	1.375	1675	1255	2710	2035
1 1/2-12	1.5	2195	1645	3560	2670

COARSE THREAD BOLTS (ENGLISH)					
SIZE	BOLT DIA.	GRADE 5  SAE J429 GRADE 5		GRADE 8  SAE J429 GRADE 8	
(DIA-TPI)	(INCHES)	PLAIN	PLATED	PLAIN	PLATED
		(FT-LB)	(FT-LB)	(FT-LB)	(FT-LB)
5/16-18	0.3125	17	13	25	18
3/8-16	0.375	31	23	44	33
7/16-14	0.4375	49	37	70	52
1/2-13	0.5	75	57	105	80
9/16-12	0.5625	110	82	155	115
5/8-11	0.625	150	115	220	160
3/4-10	0.75	265	200	375	280
7/8-9	0.875	395	295	605	455
1-8	1	590	445	910	680
1 1/8-7	1.125	795	595	1290	965
1 1/4-7	1.25	1120	840	1815	1360
1 3/8-6	1.375	1470	1100	2380	1780
1 1/2-6	1.5	1950	1460	3160	2370



NOTES



- 1 Tightening torques provided are midrange.
- 2 Consult bolt manufacturer's particular specifications, when provided.
- 3 Use flat washers of equal strength.
- 4 All torque measurements are given in foot-pounds.
- 5 Torque values specified are for bolts with residual oils or no special lubricants applied. If special lubricants of high stress ability, such as Never-Seez compound graphite and oil, molybdenum disulphite, colloidal copper or white lead are applied, multiply the torque values in the charts by the factor .90. The use of Loctite does not affect the torque values listed above.

WARNING

Anytime a gear-bearing bolt is removed, it must be replaced with a new bolt of the identical grade and size. Once a bolt has been torqued to 75% of its proof load and then removed, the torque coefficient may no longer be the same as when the bolt was new thus giving indeterminate clamp loads after torquing. Failure to replace gear-bearing bolts may result in bolt failure due to metal fatigue causing death or serious injury.

Thread Torque Chart (Metric)

FINE THREAD TORQUE CHART (METRIC)					
TIGHTENING TORQUE					
SIZE (DIA- TPI)	BOLT DIA. (INCHES)	 SAE J429 GRADE 5		 SAE J429 GRADE 8	
		PLAIN (KG-M)	PLATED (KG-M)	PLAIN (KG- M)	PLATED (KG-M)
5/16-24	0.3125	3	2	4	3
3/8-24	0.375	5	4	7	5
7/16-20	0.4375	8	6	11	8
1/2-20	0.5	12	9	17	12
9/16-18	0.5625	17	12	24	18
5/8-18	0.625	24	18	33	25
3/4-16	0.75	41	31	58	44
7/8-11	0.875	62	45	93	69
1-12	1	89	67	138	103
1 1/8-12	1.125	123	93	200	150
1 1/4-12	1.25	171	129	278	209
1 3/8-12	1.375	232	174	375	281
1 1/2-12	1.5	304	228	492	369

COARSE THREAD TORQUE CHART (METRIC)					
TIGHTENING TORQUE					
SIZE (DIA- TPI)	BOLT DIA (INCHES)	 SAE J429 GRADE 5		 SAE J429 GRADE 8	
		PLAIN (KG-M)	PLATED (KG-M)	PLAIN (KG-M)	PLATED (KG-M)
5/16-18	0.3125	2	2	3	2
3/8-16	0.375	4	3	6	5
7/16-14	0.4375	7	5	10	7
1/2-13	0.5	10	8	15	11
9/16-12	0.5625	15	11	21	16
5/8-11	0.625	21	16	30	22
3/4-10	0.75	37	28	52	39
7/8-9	0.875	55	41	84	63
1-8	1	82	62	126	94
1 1/8-7	1.125	110	82	178	133
1 1/4-7	1.25	155	116	251	188
1 3/8-6	1.375	203	152	329	246
1 1/2-6	1.5	270	210	438	328

NOTES

- 1 Tightening torques provided are midrange.
- 2 Consult bolt manufacturer's particular specifications, when provided.
- 3 Use flat washers of equal strength.
- 4 All torque measurements are given in kilogram-meters.
- 5 Torque values specified are for bolts with residual oils or no special lubricants applied. If special lubricants of high stress ability, such as Never-Seez compound graphite and oil, molybdenum disulphite, colloidal copper or white lead are applied, multiply the torque values in the charts by the factor .90. The use of Loctite does not affect the torque values listed above.

WARNING

Anytime a gear-bearing bolt is removed, it must be replaced with a new bolt of the identical grade and size. Once a bolt has been torqued to 75% of its proof load and then removed, the torque coefficient may no longer be the same as when the bolt was new thus giving indeterminate clamp loads after torquing. Failure to replace gear-bearing bolts may result in bolt failure due to metal fatigue causing death or serious injury.

Thread Torque Chart - Metric Bolts

METRIC BOLT THREAD TORQUES								
Size	Pitch	Class 8.8		Class 9.8		Class 10.9		Socket Head 12.9 as received
		Dry	Lubricated	Dry	Lubricated	Dry	Lubricated	
M3	0.5							2.4
M4	0.7	3 (28*)	1.8 (17*)	3.5 (30*)	2 (18*)	4.5 (39*)	2.5 (24*)	5.6
M5	0.8	6(57*)	3.6(34*)	7(61*)	4(37*)	9(78*)	5.5(47*)	
M6	1	11(8)	6.5(5)	12(9)	7(6)	17(11)	10(7)	19.3
M7	1	20(14)	12(8)	22(16)	13(10)	28(20)	17(12)	
M8	1.25	28(20)	17(12)	29(21)	17(13)	40(28)	24(17)	47
	1	30(21)	18(13)			42(30)	25(18)	
M10	1.5	56(40)	34(24)	57(42)	34(25)	77(55)	46(33)	93
	1.25	58 (41)	35 (25)			80 (57)	48 (35)	
M12	1.75	97 (69)	58 (42)	100 (73)	60 (45)	135 (95)	80 (57)	162
	1.25	102 (73)	61 (45)			146 (105)	90 (63)	
M14	2	155 (109)	90 (65)	156 (115)	95 (70)	213 (150)	130 (90)	
	1.5	165 (116)	100 (70)			227 (160)	135 (95)	
M16	2	235 (166)	140 (100)	245 (180)	150 (110)	330 (235)	200 (140)	400
	1.5	245 (175)	150 (105)			345 (245)	210 (145)	
M18	2.5	320 (228)	190 (135)			455 (325)	275 (195)	
	1.5	350 (250)	210 (150)			500 (355)	300 (215)	
M20	2.5	455 (325)	275 (195)	475 (350)	285 (210)	640 (455)	385 (275)	785
	1.5	500 (355)	300 (215)			695 (495)	415 (300)	
M22	2.5	615 (440)	370 (265)			860 (615)	515 (370)	
	1.5	660 (470)	400 (280)			925 (660)	550 (400)	
M24	3	780 (560)	470 (335)	815 (600)	490 (360)	1100 (780)	660 (470)	1,357
	2	850 (600)	500 (360)			1190 (850)	715 (510)	
M27	3	1150 (825)	695 (500)			1630 (1160)	980 (700)	
M30	3.5	1565 (1115)	950 (675)	1630 (1200)	980 (720)	2200 (1580)	1320 (950)	2,693
M33	3.5	2130 (1520)	1280 (900)			3000 (2150)	1800 (1290)	
M36	4	2730 (1950)	1650 (1175)			3850 (2750)	2300 (1650)	
M39	4	3550 (1550)	2130 (1525)			5000 (3550)	3000 (2130)	

NOTE:

- 1 All units in Newton Meters (Foot-Pounds) unless marked with **. Units for torques marked with ** are Inch-Pounds.
- 2 Dry torques may vary by as much as $\pm 20\%$ depending on the type of nut used and the surface finish of the nut.
- 3 Torques are for zinc plated product. Increase torque by 50% for non-plated product.
- 4 Lubricated values are predicted when bolts are installed with Never-Seez regular grade anti-seize lubricating compound or equivalent.

WARNING

Anytime a gear-bearing bolt is removed, it must be replaced with a new bolt of the identical grade and size. Once a bolt has been torqued to 75% of its proof load and then removed, the torque coefficient may no longer be the same as when the bolt was new thus giving indeterminate clamp loads after torquing. Failure to replace gear-bearing bolts may result in bolt failure due to metal fatigue causing death or serious injury.

IMT Limited Warranty Policy

Warranty Coverage – Products manufactured by Iowa Mold Tooling Co., Inc. (IMT) are warranted to be free from defects in material and workmanship, under proper use, application and maintenance in accordance with IMT's written recommendations, instructions and specifications as follows:

1) One (1) year: labor on IMT workmanship from the date the unit is put into service by the selling IMT dealer, as indicated on the warranty registration, not to extend beyond two (2) years from the date of manufacture by IMT.

2) One (1) year: original and replacement IMT parts from the date the unit or part is put into service by the selling IMT dealer, as indicated on the warranty registration, not to extend beyond two (2) years from the date of manufacture by IMT.

3) Two (2) years: original rotary screw air end assembly from the date the unit is put into service by the selling IMT dealer, as indicated on the warranty registration, not to extend beyond three (3) years from the date of manufacture. All other compressor components including the shaft seal are warranted for one year, not to extend beyond 18 months from the date of shipment from IMT.

4) Three (3) years: original IMT Crane structural parts from the date the unit is put into service by the selling IMT dealer, as indicated on the warranty registration, not to extend beyond four (4) years from the date of manufacture by IMT. Structural items are exclusively specified to be the crane base, mast, and booms.

5) Three (3) years: paint coverage on structural components such as crane bases, masts, booms, truck body doors and body panels to be free from defects such as corrosion, blisters, unreasonable color or gloss loss, or delamination determined to result from paint failure. This warranty is effective from the date the unit is put into service by the selling IMT dealer, as indicated on the warranty registration and not to extend beyond four (4) years from the date of manufacture from IMT. Damage such as chips, scratches, and corrosion due to dirt build-up or normal wear that occurs through usage of the product is not covered under this warranty. Rust bleed out from inaccessible structural features as a result of prolonged moisture exposure does not constitute a failure in paint coverage or adhesion and is not covered under this warranty.

6) Five (5) years: Dominator rust-through coverage for body panels, doors, and wheel wells from the date the unit is put into service by the selling IMT dealer, as indicated on the warranty registration, not to extend beyond six (6) years from the date of manufacture. Rust-through damage as a result of surface and/or paint damage, product neglect or abuse, or structural modification is not covered under this warranty.

7) Five (5) year: Sitestar lubrication tanks structural coverage from the date the unit is put into service by the selling IMT dealer, as indicated on the warranty registration, not to extend beyond six (6) years from the date of manufacture.

8) Ninety (90) days: Rebuilt parts from the date of shipment from IMT.

IMT's obligation under this warranty is limited to, and the sole remedy for any such defect shall be the repair or replacement (at IMT's option) of unaltered parts returned to IMT, freight prepaid, and proven to have such defect, provided such defect occurs within the above stated warranty period, is reported to IMT within fourteen (14) days of its occurrence, and all claims and failing parts are returned to IMT within thirty (30) days after the repair is completed. IMT pays ground freight one-way only. Premium freight will be at the customer's expense. Parts not of IMT manufacture are warranted only to the extent they are warranted by the original manufacturer.

IMPLIED WARRANTY EXCLUDED - Only authorized IMT warranties are valid and applicable to IMT product. These warranties are in lieu of all other express or implied warranties or representations, including warranties of merchantability or fitness for any particular purpose or of any other obligations on the part of IMT. IMT may, in specific instances and by written approval of an officer of the firm in advance of any bid or sale, modify or extend the terms of the standard IMT warranty.

WARRANTY REGISTRATION AND CLAIMS – The unit warranty is instated by completion of the product registration by the end-user. Failure to return the completed product registration form to IMT at the time of purchase may result in invalidation of product warranty. Warranty claims must be submitted and shall be processed in accordance with IMT's established warranty claim procedures.

WARRANTY SERVICE - Warranty service will be performed by any IMT distributor authorized to sell new IMT products of the type involved or by any IMT Service Center authorized to service the type of product involved or by IMT in the event of direct sales made by IMT. At the time of requesting warranty service, the purchaser must present evidence of the date of delivery of the product. The purchaser shall pay any premium for overtime labor requested by the purchaser, any charge for making service calls and for transporting the equipment to the place where warranty work is performed, unless otherwise authorized in writing by IMT.

PARTS AND LABOR RATE - Labor reimbursement for warranty claims will be one-hundred percent (100%) of the standard hourly retail labor rate, as reported to IMT, multiplied by the number of work hours listed on the warranty service report. IMT reserves the right to modify those claims for warranty work hours which appear excessive. Part reimbursement for warranty claims will be one-hundred percent (100%) of the selling price paid by the distributor to IMT. Labor is not included on service parts.

WARRANTY VOIDED - All obligations of IMT under this warranty shall be terminated: (1) if service other than normal maintenance or normal replacement of service items is performed by someone other than an authorized IMT dealer, (2) if product is modified or altered in ways not approved by IMT.

PURCHASER'S RESPONSIBILITY - This warranty covers only defective material and workmanship. It does not cover depreciation or damage caused by normal wear, accident, improper protection in storage, or improper use. The purchaser has the obligation of performing the care and maintenance duties discussed in IMT's written recommendations, instructions and specifications. Any damage which results because of purchaser's failure to perform such duties shall not be covered by this warranty. The cost of normal maintenance and normal replacement of service items such as wear pads, oil, etc. shall be paid by the purchaser.

CONSEQUENTIAL DAMAGES - The only remedies the purchaser has in connection with the breach of performance of any warranty on IMT products are those set forth above. In no event will the dealer, IMT or any company affiliated with IMT, be liable for business interruptions, loss of sales and/or profits, rental or substitute equipment, costs of delay for any other special, indirect, incidental or consequential losses, costs or damages.

REPRESENTATIONS EXCLUDED - IMT products are subject to no expressed, implied or statutory warranty other than herein set forth, and no agent, representative or distributor of the manufacturer has any authority to alter the terms of this warranty in any way whatsoever or to make any representations or promises, express or implied, as to the quality or performance of IMT products other than those set forth above.

CHANGE IN DESIGN - IMT reserves the right to make changes in design or improvements upon its products without imposing any obligation upon itself to install the same upon its products theretofore manufactured.



IMT Warranty Policy 99901305 (Effective January 1, 2002)