
Manual Part #99904399

EDSC Mechanics Truck Parts & Specifications

Revised 20091210



IOWA MOLD TOOLING CO., INC.

PO Box 189

Garner, IA 50438

Tel: 641-923-3711 FAX: 641-923-2424

Website: <http://www.imt.com>

Copyright © 2009 Iowa Mold Tooling Co., Inc.
All rights reserved

No part of this publication may be reproduced, stored in a retrieval system, or transmitted in any form or by any means, electronic, mechanical, photocopying, recording or otherwise without the prior written permission of Iowa Mold Tooling Co., Inc.

Iowa Mold Tooling Co., Inc. is an Oshkosh Corporation company.

Contents

Revisions	ii
EDSC Specifications	3
<hr/>	
Parts Ordering Information	5
<hr/>	
EDSC Parts	7
<hr/>	
Base Body Assembly (99904227)	8
Door Assembly (99904294).....	10
Body Installation (99904216)	11
Master Lock Installation (99904228).....	12
Installation, Shelves (99904211)	14
7-Drawer Set, 19" Wide, 3-5-7" High Drawers (70734285).....	16
7-Drawer Set, 16.5" Wide, 3-5-7" High Drawers (70734286).....	17
Tailgate Assembly (51718801).....	18
Boom Support, Electric Cranes (51720308).....	20
Outriggers (99904229).....	22
Outrigger Cylinder, Left (51721372).....	25
Tank Bracket Kit, 3-Bottle (51721618)	27
Tank Bracket Kit, 2-Bottle (51721619)	28
Thread Torque Chart (English).....	29
Thread Torque Chart (Metric)	30
Thread Torque Chart - Metric Bolts	31
IMT Limited Warranty Policy	33

Revisions

DATE	LOCATION	DESCRIPTION
20091210	99904294	UPDATED HARDWARE

CHAPTER 1

EDSC Specifications



SPECIFICATIONS	11-foot
Body Rating	10,000 ft-lb
Body Weight	2,660 lb
Body Width (including rain eaves)	84 in
Sidepack Height	44 in
Sidepack Depth	16.5 in
Cargo Deck Width	49 in
Step Bumper Depth	17.3 in
Tailgate Height	10 in
Storage Capacity	77.3 ft ³
Angle of Departure with 4 x 2 chassis	10.2°
Angle of Departure with 4 x 4 chassis	11.9°
Standard Configuration	11-foot body with 42" standard left side and right side sidepacks

Door Opening Dimensions - 42" High Sidepacks	
LH 1st Vertical	22.63"W x 38.00"H
LH 2nd Vertical	22.63"W x 38.00"H
LH 1st Horizontal	33.75"W x 16.38"H
LH Rear	18.38"W x 38.00"H
RH 1st Vertical	22.63"W x 38.00"H
RH 2nd Vertical	22.63"W x 38.00"H
RH 1st Horizontal	33.75"W x 16.38"H
RH Rear	18.38"W x 38.00"H

Body Materials

The sidepacks are constructed of 14-gauge galvanized steel. The floor structure is constructed of 12-gauge galvanized and 1/8" deckplate steel. The step bumper is constructed of galvanized and cold rolled steel.

Body Sub-Structure

Patent pending inverted A-frame design constructed of 12-gauge galvanized material with integral crane box and rear outrigger housing.

Electrical System

The electrical system consists of a central power distribution point in the crane box using automotive-style harnesses. The circuits use white wire with the circuit function printed every 3". The harness is protected by an overbraid that is heat- and cut-resistant.

Doors

The flush-mount doors are double panel and constructed of 14-gauge galvanized steel with internal formed eaves and hemmed edges. The latches are a 2-point rotary double-acting style. They are constructed of cast steel with a powder-coat finish.

Options

1. Drawers and drawer sets	6. Individual incandescent compartment lights
2. Standard adjustable shelves	7. Work lights
3. 3" high divided adjustable shelves	8. Air systems
4. Rear manual out and power down outriggers	9. Telescopic cranes up to 10,000 ft-lb
5. Workbench vises and vise plates	

Chassis Specifications

Chassis Style	Wheelbase	Cab to Axle
Short Wheelbase	144.3" (3665 mm)	85.19" (2164 mm)
Short Wheelbase with Extended Cab	144.3" (3665 mm)	61.17" (1554 mm)

CHAPTER 2

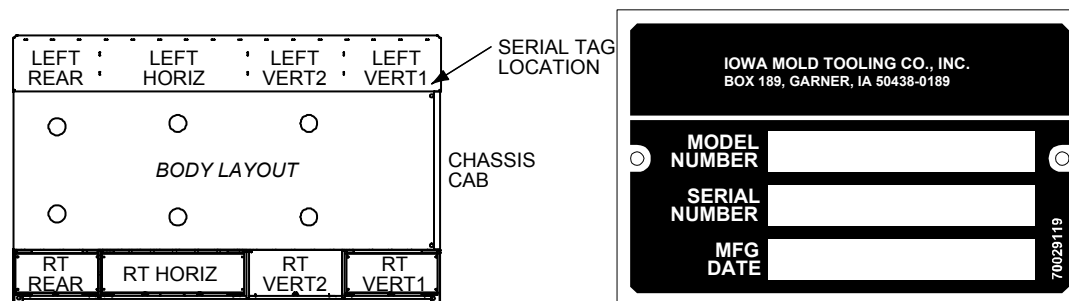
Parts Ordering Information

GENERAL

This manual contains the exploded parts drawings and accompanying parts lists for the assemblies used on this body. For optional equipment, refer to the appropriate service manual.

BODY IDENTIFICATION

Every IMT body has an identification placard (see figure). This placard is attached in the upper left hand corner of the left vertical 1 compartment.



When ordering parts, communicating warranty information, or referring to the unit in correspondence, always include the serial number and model numbers. All inquiries should be addressed to:

Iowa Mold Tooling Co., Inc.
 Box 189, Garner, IA 50438-0189
 Telephone: 641-923-3711
 Technical Support Fax: 641-923-2424

PARTS IDENTIFICATION

To insure proper replacement parts are received, specify the complete number/letter sequence for any part requested. The parts sections of this manual can assist you in determining the correct part number.

ORDERING REPAIR PARTS

When ordering replacement parts:

- 1 Give the model number of the unit.
- 2 Give the serial number of the unit.
- 3 Specify the complete part number. When ordering cylinder parts, or one of the main weldments, always give the stamped part number.

- 4 Give a complete description of the part.
- 5 Specify the quantity required.
- 6 Fill in your serial number to assist in future replacement parts ordering.

SERIAL NUMBER:

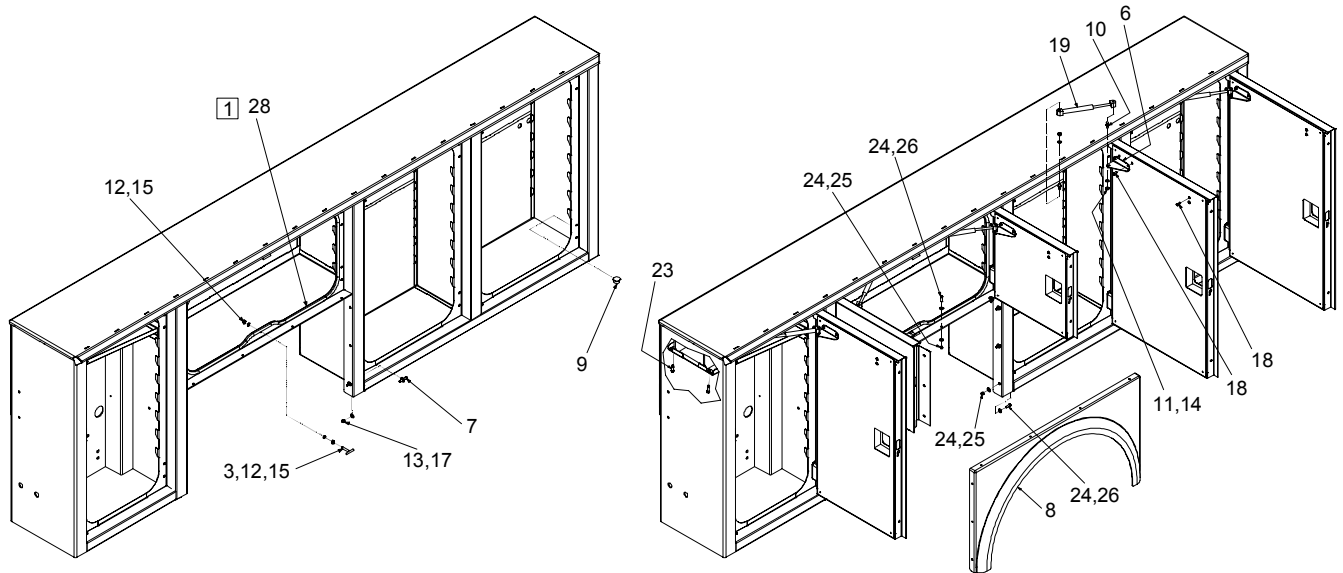
CHAPTER 3

EDSC Parts

In This Chapter

Base Body Assembly (99904227)	7
Door Assembly (99904294)	9
Body Installation (99904216)	11
Master Lock Installation (99904228)	12
Installation, Shelves (99904211)	13
7-Drawer Set, 19" Wide, 3-5-7" High Drawers (70734285)	15
7-Drawer Set, 16.5" Wide, 3-5-7" High Drawers (70734286)	17
Tailgate Assembly (51718801)	18
Boom Support, Electric Cranes (51720308)	20
Outriggers (99904229)	21
Outrigger Cylinder, Left (51721372)	24
Tank Bracket Kit, 3-Bottle (51721618)	26
Tank Bracket Kit, 2-Bottle (51721619)	28
Thread Torque Chart (English)	28
Thread Torque Chart (Metric)	30
Thread Torque Chart - Metric Bolts	31

Base Body Assembly (99904227)



NOTE (SEE REFERENCE NUMBER IN BOX):

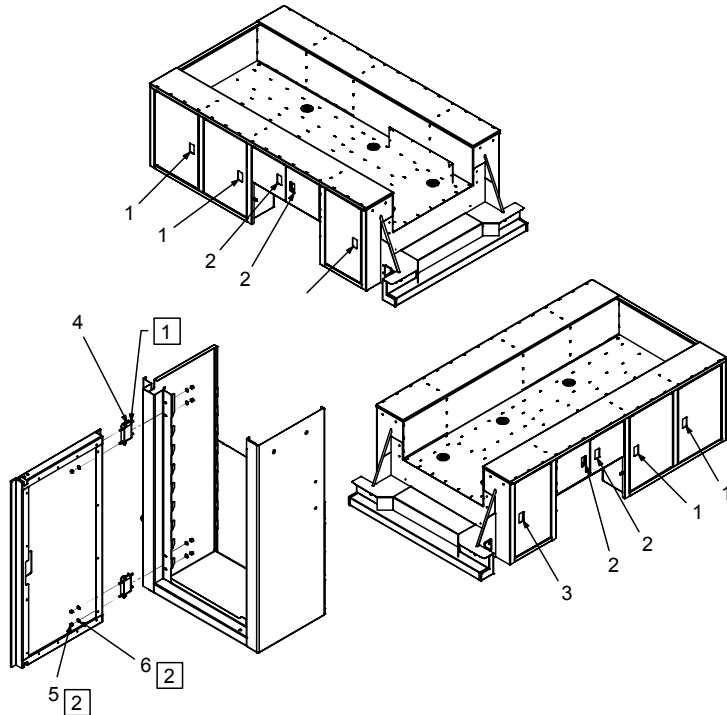
- 1 START AND STOP WEATHERSTRIP HERE IN DOUBLE DOOR COMPARTMENTS.

99904227 PARTS LIST

ITEM	PART #	DESCRIPTION	KIT	ELITE SK BODY PARTS
1.	51721630	HARDWARE KIT-CRANE DRIP TRAY	REF	1
2.	51721641	HARDWARE KIT-WHEEL SKIRTS	REF	1
3.	52722406	STRIKER BOLT .300 SS DBL		4
4.	60131412	CRANE COMPARTMENT-DRIP TRAY		1
5.	60134420	BRACKET-DOOR SPRING, FORWARD		5
6.	60134421	BRACKET-DOOR SPRING, REAR		5
7.	60134427	STRIKER BOLT .300 SS		12
8.	60134501	SKIRT		2
9.	70034366	PLUG-PLASTIC BUTTON		8
10.	71411231	BALL STUD-PNEUMATIC SPRING		20
11.	72062001	NUT .31-18 HEX		20
12.	72062163	NUT M 8 X 1.25		8
13.	72061958	WASHER-BONDED M8 PLATED		12
14.	72063001	WASHER-FLAT 0.25		40
15.	72063281	WASHER- LOCK M8 SS		8
16.				
17.	72063255	NUT M 8 X 1.25 HEX NYLOC SS		12
18.	72602019	SCREW-MACHINERY M 6-1.00X 16 BUTTONHEAD STAINLESS STEEL		36
19.	73050188	SPRING-PNEUMATIC 40 3in STROKE		10
20.				

21.				
22.				
23.	72601959	SCREW-THREAD CUT M 8-1.5X 20 HEX HEAD WITH WASHER	#1	2
24.	72601785	WASHER-FLAT M 6	#2	40
25.	72601953	NUT M 6 X 1.00 HEX NYLOC ZINC	#2	20
26.	72601957	SCREW-MACHINE M 6-1.00X 25 BUTTON- HEAD CAPSCREW, STAINLESS STEEL	#2	20
27.	89393638	WEATHERSTRIP		8
28.	89397087	WEATHERSTRIP		1
REV. F 20090921				

Door Assembly (99904294)



NOTES (SEE REFERENCE NUMBER IN BOX):

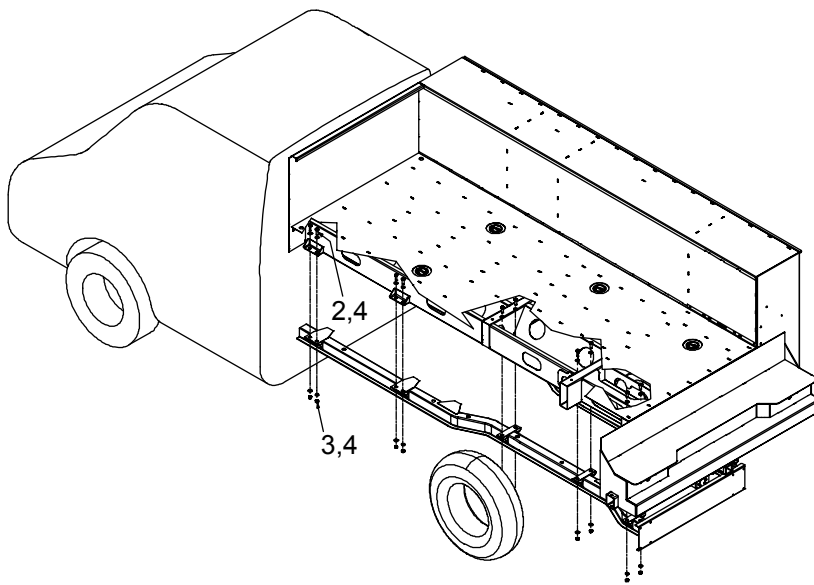
- 1 APPLY LOCTITE 515 AROUND EACH STUD BEFORE ASSEMBLY.
- 2 QUANTITY OF 4 PER HINGE.

99904294 PARTS LIST

ITEM	LOCATION	BODY	PART #	DESCRIPTION
1.	LEFT VERTICAL 1 (FRONT)	2.7 m (9')	60131287	DOOR, 100 cm (39.38") HIGH X 61 cm (24") WIDE
1.	LEFT VERTICAL 1	3.4 m (11')	60131285	DOOR, 100 cm (39.38") HIGH X 67 cm (26.28") WIDE
1.	LEFT VERTICAL 2	2.7 m (9')	NOT APPLICABLE	
1.	LEFT VERTICAL 2	3.4 m (11')	60131285	DOOR, 100 cm (39.38") HIGH X 67 cm (26.28") WIDE
1.	RIGHT VERTICAL 1	2.7 m (9')	60131287	DOOR, 100 cm (39.38") HIGH X 61 cm (24") WIDE
1.	RIGHT VERTICAL 1	3.4 m (11')	60131285	DOOR, 100 cm (39.38") HIGH X 67 cm (26.28") WIDE
1.	RIGHT VERTICAL 2	2.7 m (9')	NOT APPLICABLE	
1.	RIGHT VERTICAL 2	3.4 m (11')	60131285	DOOR, 100 cm (39.38") HIGH X 67 cm (26.28") WIDE
2.	LEFT HORIZONTAL	2.7 m (9'), 3.4 m (11')	60131286	DOOR, 47.8 cm (18.84") HIGH X 52 cm (20.53") WIDE

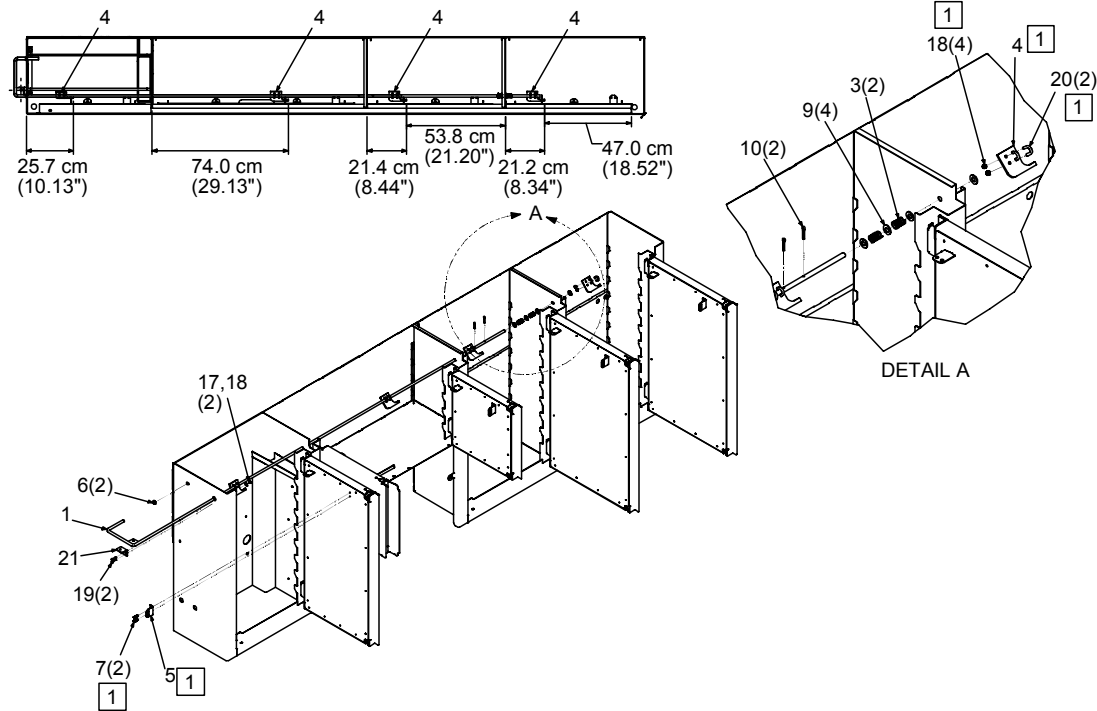
99904294 PARTS LIST				
ITEM	LOCATION	BODY	PART #	DESCRIPTION
2.	RIGHT HORIZONTAL	2.7 m (9'), 3.4 m (11')	60131286	DOOR, 47.8 cm (18.84") HIGH X 52 cm (20.53") WIDE
3.	LEFT REAR	2.7 m (9'), 3.4 m (11')	60131288	DOOR, 100 cm (39.38") HIGH X 56 cm (22.00") Wide
3.	RIGHT REAR	2.7 m (9'), 3.4 m (11')	60131288	DOOR, 100 cm (39.38") HIGH X 56 cm (22.00") WIDE
4.	ALL HINGES	ALL	72661658	HINGE-DOOR METRIC
5.	ALL HINGES	ALL	72601953	NUT M 6 X 1.00 HEX NYLOC ZINC
6.	ALL HINGES	ALL	72601785	WASHER-FLAT M 6

Body Installation (99904216)



99904216 PARTS LIST			
ITEM	PART #	DESCRIPTION	QUANTITY
1.	70144807	SPRING-DIE 1.19 X .63 X 1.5 LG	4
2.	72601796	CAP SCR M12-1.75X 40 HHZ	16
3.	72601800	WASHER-FLAT M12	40
4.	72601496	CAP SCR M12-1.75X 80 HHZ	4
5.	72062290	NUT M12 CENTER LOCKING	20
REV A 20080213			

Master Lock Installation (99904228)



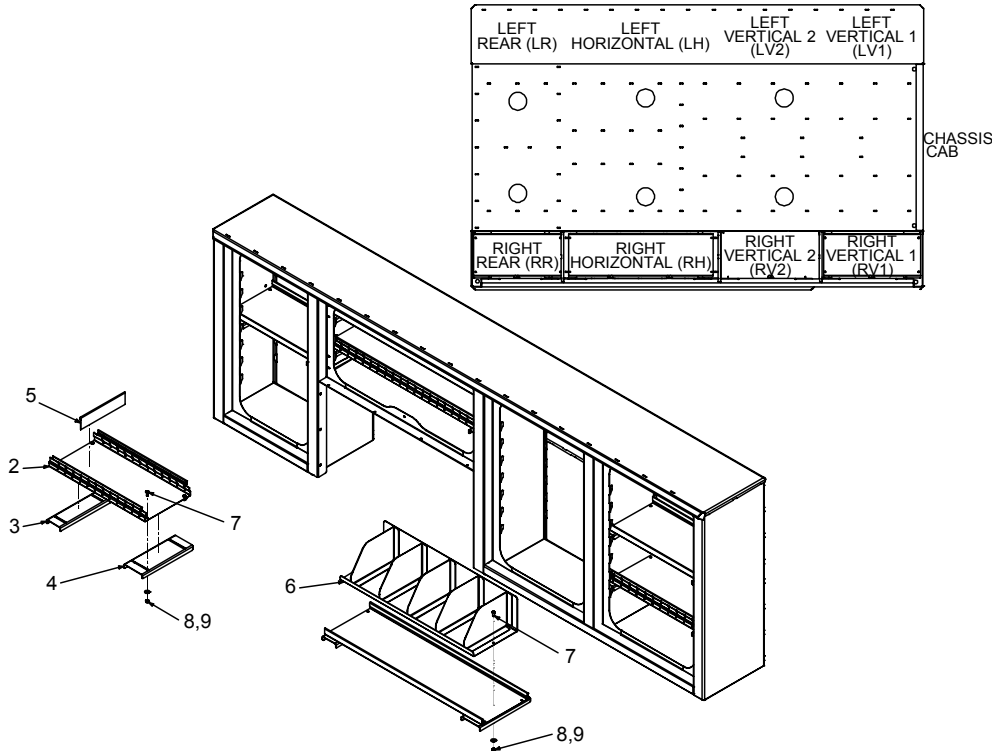
NOTES (SEE REFERENCE NUMBER IN BOX):

- 1 QUANTITY LISTED IS PER COMPARTMENT.
- 2 ONLY THE RIGHT HORIZONTAL SIDEPACK IS SHOWN. DUPLICATE ON LEFT SIDE.

99904228 PARTS LIST				
ITEM	PART #	DESCRIPTION	2.74 m (9-FOOT) (KIT # 51721240)	3.35 m (11-FOOT) (KIT # 51720984)
1.	52720928	MASTER LOCK ROD-3.35 m (11-FOOT)		2
2.	52721239	MASTER LOCK ROD-2.74 m (9-FOOT)	2	
3.	60010351	SPRING-COMPRESSION	4	4
4.	60123529	MASTER LOCK-FINGER	6	8
5.	60123530	MASTER LOCK-RECEPTACLE	6	8
6.	70034277	GROMMET-POLY 1.3 cm INSIDE DIAMETER	4	4
7.	72601971	SCREW-SHEET METAL M 6X 20 HWPh Z	12	16
9.	72063005	WASHER .50 FLAT	8	8
10.	72066192	COTTER PIN .19X1.00	2	2
17.	72601785	WASHER-FLAT M 6	4	4
18.	72601953	NUT M 6 X 1.00 HEX NYLOC ZINC	4	4
19.	72601957	SCREW-MACH M 6-1.00X 25 BUTTON-HEAD CAPSCREW STAINLESS STEEL	4	4

99904228 PARTS LIST				
ITEM	PART #	DESCRIPTION	2.74 m (9-FOOT) (KIT # 51721240)	3.35 m (11-FOOT) (KIT # 51720984)
20.	72601970	U-BOLT	6	8
21.	60132615	TAB-MASTER LOCK REAR PANEL RIGHT HAND	1	1
21.	60132614	TAB-MASTER LOCK REAR PANEL LEFT HAND	1	1
REV. B 20080521				

Installation, Shelves (99904211)

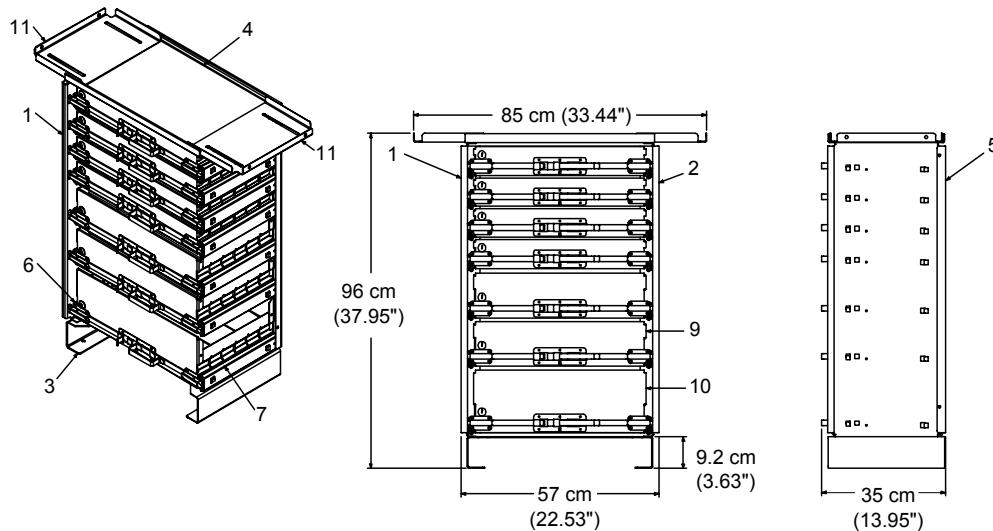


99904211 PARTS LIST			
ITEM	PART #	DESCRIPTION	QUANTITY
1.	51721501	HARDWARE KIT, EDS BOLT-IN / ADJUSTABLE SHELVES	1
2.	VARIOUS	SHELF-SEE CHART	A/R
3.	VARIOUS	SHELF END-SEE CHART	A/R
4.	VARIOUS	SHELF END-SEE CHART	A/R
4.	60131516	DIVIDER, DRAWER	A/R
6.	52720954	BOOKSHELF, 20 cm (8") HIGH X 91 cm (36") LONG X 30.5 cm (12") DEEP	A/R
6.	52720955	BOOKSHELF, 20 cm (8") HIGH X 51 cm (20") LONG X 30.5 cm (12") DEEP	A/R
7.	72601278	CAP SCREW M8-1.25X20 HHGR5Z (PART OF #1)	A/R
8.	72601952	NUT M8 HEX NYLOCK (PART OF #1)	A/R
9.	72601799	WASHER M8 FLAT (PART OF #1)	A/R
REV. C 20090928			

SHELF & SHELF END CHART						
COMPARTMENT	ITEM # 2	ITEM #3	ITEM #4		60131516	SHELF
LOCATION	SHELF	SHELF END	SHELF END	SHELF WIDTH	SHELF DIVIDER	KIT NUMBER
2.74 m (9') VERTICAL 1	60132081	60131517	60131518	67 cm (26.33")		51721237
	60132082	60131517	60131518	67 cm (26.33")	6 INCLUDED	51721238

3.35 m (11') VERTICAL 1 / VERTICAL 2	60131514	60131517	60131518	72 cm (28.44")		51720962
	60131515	60131517	60131518	72 cm (28.44")	6 INCLUDED	51720963
LEFT HORIZONTAL / RIGHT HORIZONTAL	60131507	60131506	60131518	108 cm (42.50")		51720965
	60131512	60131506	60131518	108 cm (42.50")	10 INCLUDED	51720966
LEFT REAR / RIGHT REAR	60131505	60131506	60131518	65.6 cm (25.84")		51720967
	60131510	60131506	60131518	65.6 cm (25.84")	5 INCLUDED	51720968

7-Drawer Set, 19" Wide, 3-5-7" High Drawers (70734285)

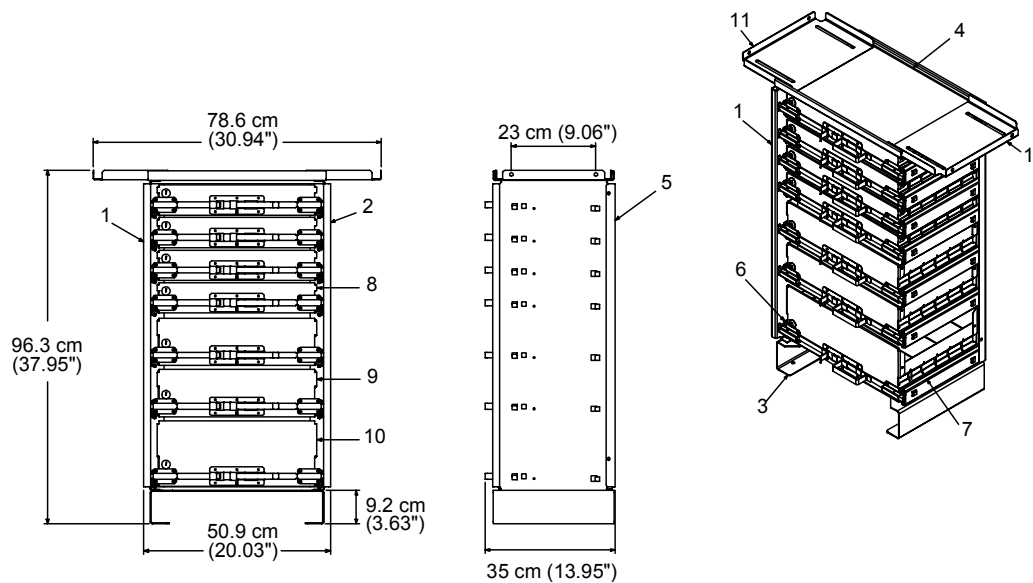


NOTES:

- 1 LOOSE FASTENER KIT 51720677, INCLUDED WITH EACH DRAWER SET, IS REQUIRED TO BOLT DRAWER ASSEMBLY IN PLACE. KIT INCLUDES (4) CAP SCREWS, (8) MACHINERY SCREWS, (12) 1/4-20 NUTS, (2) BONDED PLATED WASHERS, AND (4) FLAT WASHERS.

70734285 PARTS LIST			
ITEM	PART #	DESCRIPTION	QUANTITY
1.	60132037	PANEL-DRAWER SIDE, 30.5 cm (12") DEEP, LEFT	1
2.	60132038	PANEL-DRAWER SIDE, 30.5 cm (12") DEEP, RIGHT	1
3.	60132036	RISER-ROLLOUT DRAWERS 48 cm (19") WIDE X 30.5 cm (12") DEEP X 10 cm (4") HIGH	1
4.	60132035	SHELF-ROLLOUT DRAWERS 48 cm (19") WIDE X 30.5 cm (12") D	1
5.	60132039	PANEL-DRAWER BACK 48 cm (19") WIDE X 82.6 cm (32.5") HIGH	1
6.	70734291	DRAWER SLIDE WITH TABS, LEFT	7
7.	70734292	DRAWER SLIDE WITH TABS, RIGHT	7
8.	70734287	DRAWER WITH DIVIDERS, PAINTED, 7.6 cm (3") HIGH X 30.5 cm (12") DEEP X 48 cm (19") WIDE, SINGLE PULL	4
9.	70734289	DRAWER WITH DIVIDERS, PAINTED, 12.7 cm (5") HIGH X 30.5 cm (12") DEEP X 48 cm (19") WIDE, SINGLE PULL	2
10.	70734290	DRAWER WITH DIVIDERS, PAINTED, 17.8 cm (7") HIGH X 30.5 cm (12") DEEP X 48 cm (19") WIDE, SINGLE PULL	1
11.	60132040	SHELF-ROLLOUT DRAWERS, ADJUSTABLE	2
12.	60132043	MAT-RUBBER	7
REV. C 20091001			

7-Drawer Set, 16.5" Wide, 3-5-7" High Drawers (70734286)

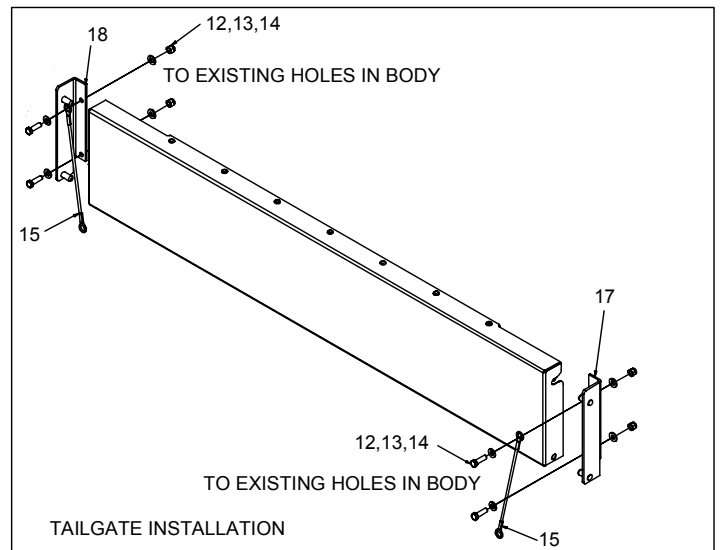
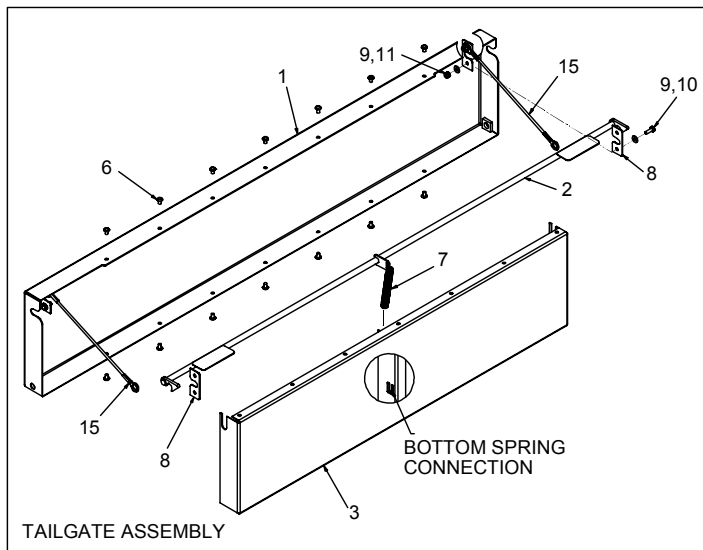


NOTES:

- 1 LOOSE FASTENER KIT 51720677, INCLUDED WITH EACH DRAWER SET, IS REQUIRED TO BOLT DRAWER ASSEMBLY IN PLACE. KIT INCLUDES (4) CAP SCREWS, (8) MACHINERY SCREWS, (12) 1/4-20 NUTS, (2) BONDED PLATED WASHERS, AND (4) FLAT WASHERS.

70734286 PARTS LIST			
ITEM	PART #	DESCRIPTION	QUANTITY
1.	60132037	PANEL-DRAWER SIDE, LEFT	1
2.	60132038	PANEL-DRAWER SIDE, RIGHT	1
3.	60132050	RISER-ROLLOUT DRAWERS 42 cm (16.5") WIDE X 30.5 cm (12") DEEP X 10 cm (4") HIGH	1
4.	60132049	SHELF-ROLLOUT DRAWERS 42 cm (16.5") WIDE X 30.5 cm (12") DEEP	1
5.	60132051	PANEL-DRAWER BACK 42 cm (16.5") WIDE X 82.6 cm (32.5") HIGH	1
6.	70734291	DRAWER SLIDE WITH TABS, LEFT	7
7.	70734292	DRAWER SLIDE WITH TABS, RIGHT	7
8.	70734293	DRAWER WITH DIVIDERS, PAINTED, 7.6 cm (3") HIGH X 30.5 cm (12") DEEP X 41.9 cm (16.5") WIDE, SINGLE PULL	4
9.	70734295	DRAWER WITH DIVIDERS, PAINTED, 12.7 cm (5") HIGH X 30.5 cm (12") DEEP X 41.9 cm (16.5") WIDE, SINGLE PULL	2
10.	70734296	DRAWER WITH DIVIDERS, PAINTED, 17.8 cm (7") HIGH X 30.5 cm (12") DEEP X 41.9 cm (16.5") WIDE, SINGLE PULL	1
11.	60132040	SHELF-ROLLOUT DRAWERS, ADJUSTABLE	2
12.	60132043	MAT-RUBBER	7
REV. C 20091001			

Tailgate Assembly (51718801)



INSTALLATION NOTES:

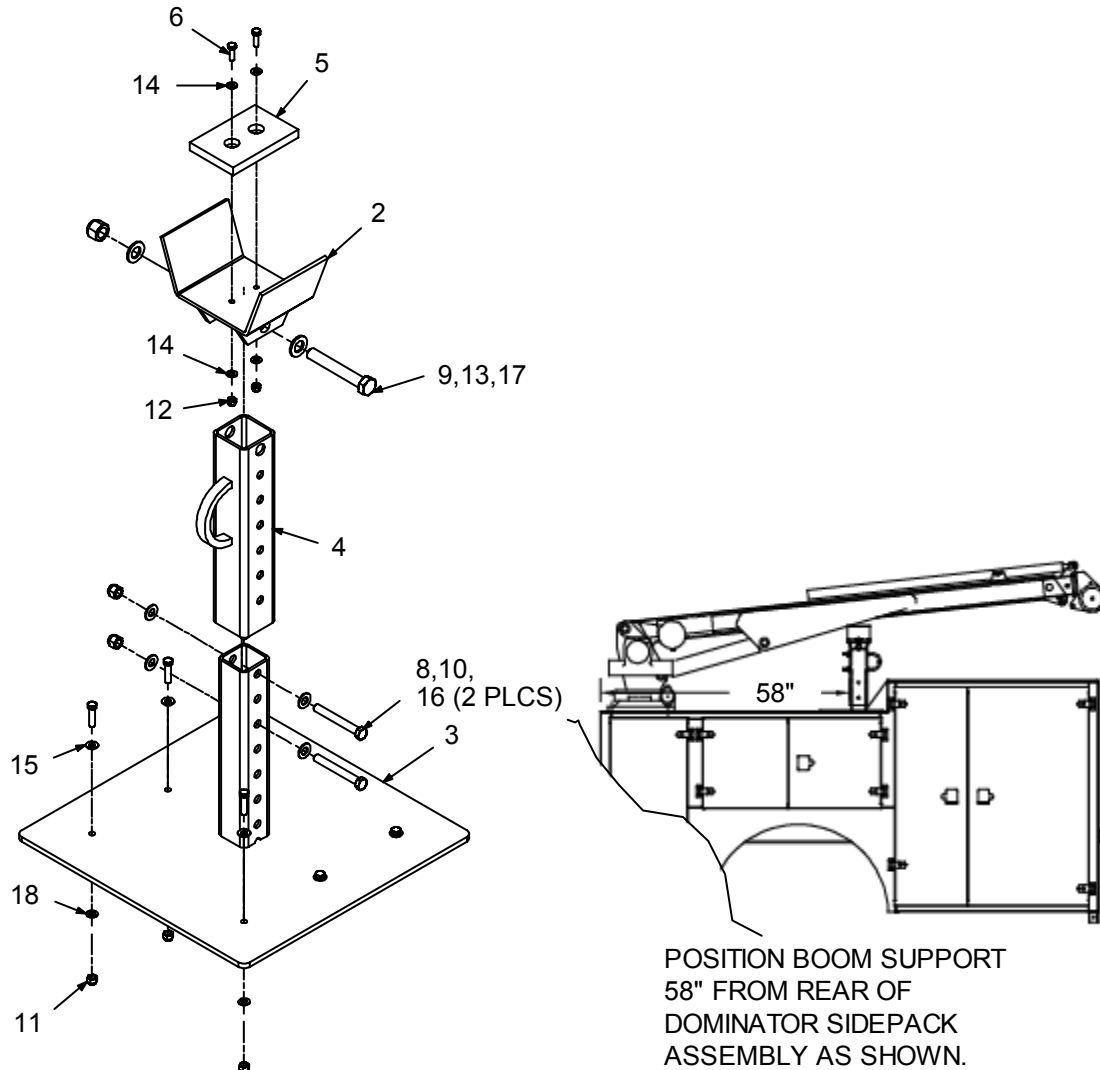
- 1 INSTALL ROD WELDMENT #2 INTO PANEL #3 SLOTS.
- 2 CONNECT SPRING #7 BETWEEN PANEL #3 BRACKET AND ROD #2 BRACKET.
- 3 JOIN PANEL #1 OVER PANEL #3.
- 4 CONNECT PANEL #1 TO PANEL #3 WITH RIVET #6.
- 5 INSERT LOWER MOUNTING PIN OF MOUNTING BRACKETS #17 AND #18 INTO LOWER HOLE OF ASSEMBLED TAILGATE.
- 6 BOLT ASSEMBLY TO REAR OF BODY.
- 7 CABLE #15 WILL SHARE THE TOP MOUNTING HOLE IN BRACKETS #17 AND #18. ATTACH THE OTHER END OF CABLE TO THE TOP END OF THE TAILGATE TO HOLD THE TAILGATE PARALLEL TO THE CARGO FLOOR.

51718801 PARTS LIST

ITEM	PART #	DESCRIPTION	QUANTITY
1.	52718802	TAILGATE WELDMENT REAR COVER	1
2.	52718803	TAILGATE WELDMENT LATCH ROD	1
3.	52718804	TAILGATE WELDMENT FRONT COVER	1
6.	72661226	RIVET-ALUMINUM .257 DIA X .38 GRIP	14
7.	71411138	SPRING-COMPRESSION .50 X 3.50 X 14GA	1
8.	60126539	BRACKET, TAILGATE REAR COVER	2
9.	72063001	WASHER .25 FLAT (WAS 72063166)	8
10.	72060002	CAP SCREW-.25-20X .75 HH GR5Z (WAS 72601827)	4
11.	72062104	NUT .25-20 HEX NYLOC (WAS 72062194)	4

51718801 PARTS LIST			
12.	72063003	WASHER .38 FLAT (WAS SS)	8
13.	72060047	CAP SCREW .38-16X 1.25 HHGR5Z (WAS 72601835)	4
14.	72062103	NUT .38-16 HEX NYLOC (WAS 72062197)	4
15.	72661600	CABLE, PLASTIC COATED	2
17.	52719638	TAILGATE POST WELDMENT, RH	1
18.	52719639	TAILGATE POST WELDMENT, LH	1
REV. F 2007			

Boom Support, Electric Cranes (51720308)

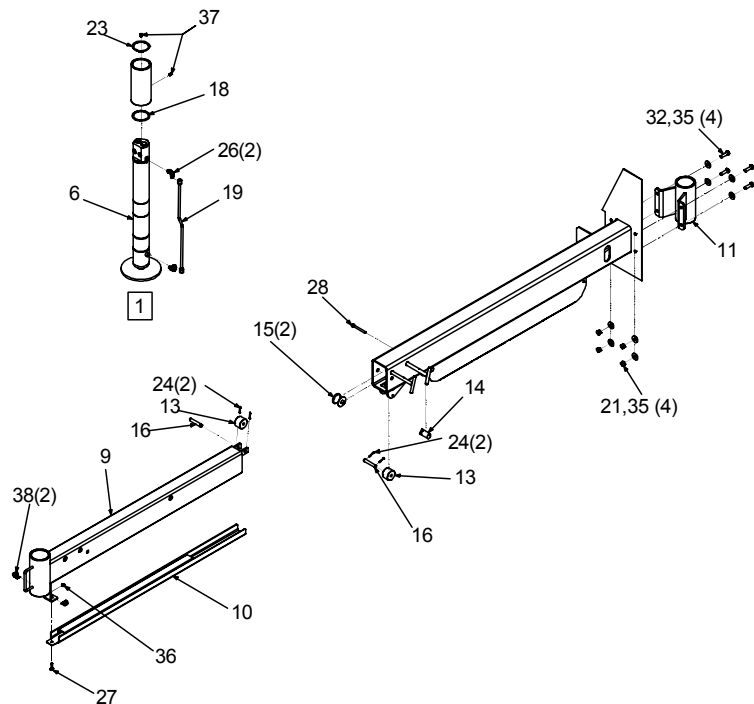


51720308 PARTS LIST

ITEM	PART #	DESCRIPTION	KIT #	QUANTITY
1.	51720310	HARDWARE KIT BOOM SUPPORT-DSC-3203i		1
2.	52706408	SADDLE-WELDMENT		1
3.	52720307	PEDESTAL-WELDMENT		1
4.	52720309	WELDMENT-PEDESTAL TUBE/RING		1
5.	60030306	WEAR PAD-RC UHMW .75X4.00X6.00		1
6.	72060025	CAP SCREW .31-18X 1.00 HH GR5 Z	#1	2
7.	72060048	CAP SCREW .38-16X 1.50 HH GR5 Z	#1	6
8.	72060099	CAP SCREW .50-13X 4.00 HH GR5 Z	#1	2
9.	72060191	CAP SCREW .75-10X 5.00 HH GR5 Z	#1	1
10.	72062080	NUT .50-13 HEX NYLOCK	#1	2

51720308 PARTS LIST				
ITEM	PART #	DESCRIPTION	KIT #	QUANTITY
11.	72062103	NUT .38-16 HEX NYLOCK	#1	6
12.	72062109	NUT .31-18 HEX NYLOCK	#1	2
13.	72062114	NUT .75-10 HEX NYLOCK	#1	1
14.	72063002	WASHER .31 FLAT	#1	4
15.	72063003	WASHER .38 FLAT	#1	6
16.	72063005	WASHER .50 FLAT	#1	4
17.	72063008	WASHER .75 FLAT	#1	2
18.	76392821	WASHER-BONDED PLTD .38	#1	6
REV. B 20091209				

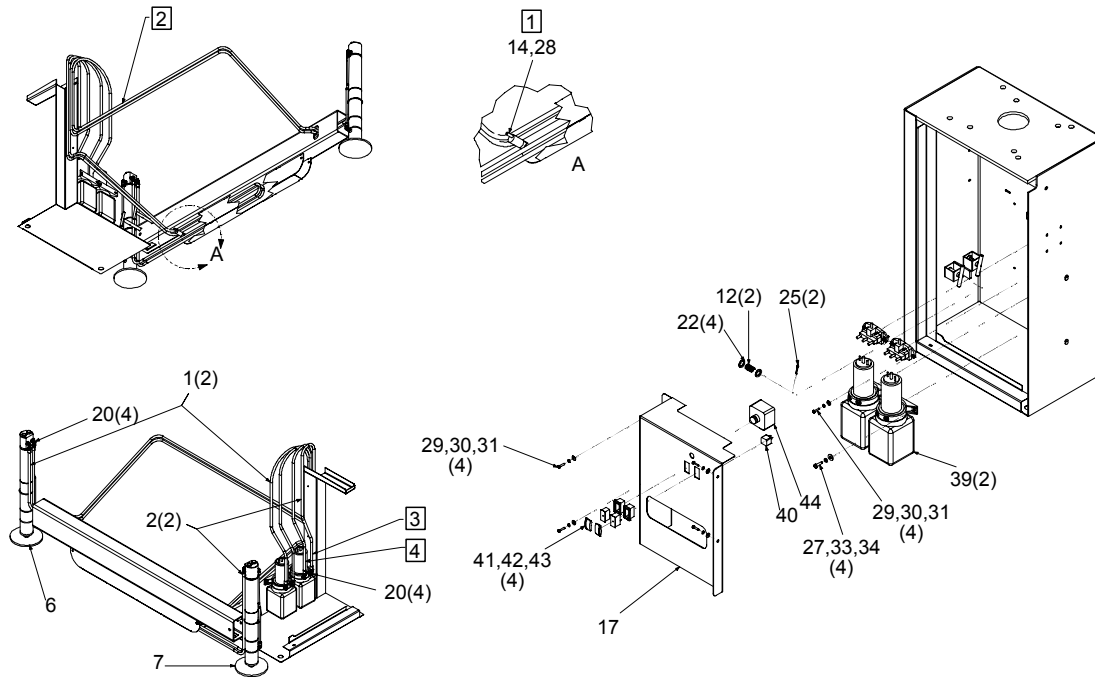
Outriggers (99904229)



NOTES (SEE REFERENCE NUMBER IN BOX):

- 1 TYPICAL EACH CYLINDER.

99904229 DRAWING



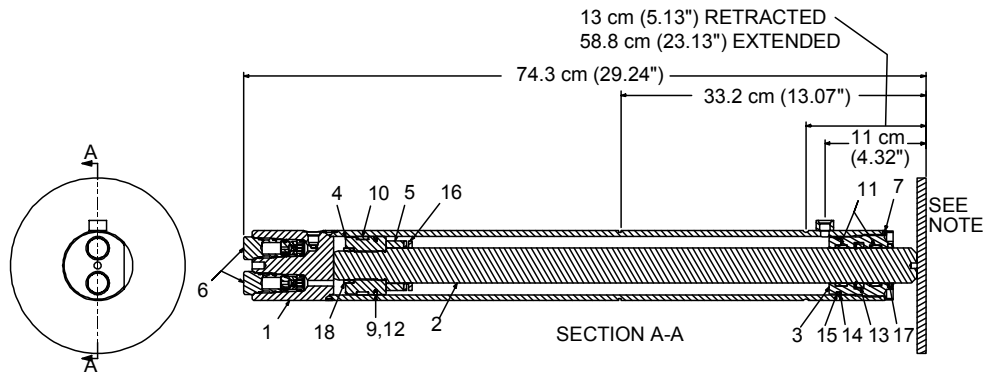
NOTES (SEE REFERENCE NUMBER IN BOX):

- 1 CAM CLAMP SECURES HOSES TO UNDERSIDE OF STABILIZER HOUSING.
- 2 THROUGH 3" X 8" FLOOR TUBE.
- 3 RETRACT.
- 4 EXTEND.

99904229 PARTS LIST				
ITEM	PART #	DESCRIPTION	KIT #	QUANTITY
1.	51397119	HOSE-FF .25 X 155.00 (4-4) 100R17	#3	2
2.	51397120	HOSE-FF .25 X 190.00 (4-4) 100R17	#3	2
3.	51721012	HOSE KIT		REF
4.	51721013	HARDWARE KIT		REF
5.	51721350	LOCK RINGS, OUTRIGGERS		REF
6.	51721372	CYLINDER		1
7.	51721734	CYLINDER		1
8.	52718725	PIN		2
9.	52720952	WELDMENT-OUTRIGGER SLIDEOUT ASSEMBLY		1
10.	52721212	WELDMENT-CHANNEL HOSE CARRIER	#4	1
11.	52721282	WELDMENT-OUTRIGGER MOUNT		1
12.	60010351	SPRING-COMPRESSION .062 X 1.50 X .845OD	#4	2
13.	60030053	ROLLER-UHMW .50 X 2.00 X 1.38 LG	#4	2
14.	60030354	CAM CLAMP 1.00 DIA. X 2.00	#4	1
15.	60030369	WEAR PAD-ROUND	#4	2
16.	60106314	PIN	#4	2

99904229 PARTS LIST				
ITEM	PART #	DESCRIPTION	KIT #	QUANTITY
17.	60132133	COVER-POWER UNIT		1
18.	71412967	LOCK RING-OUTRIGGER	#5	2
19.	71412970	PORT TUBE		2
20.	72053758	ELBOW-M STR/90/M JIC 4 4	#3	8
21.	72062290	NUT M12 CENTER LOCKING	#4	4
22.	72063028	MACHINERY BUSHING .75X14 GA NR	#4	4
23.	72066108	RETAINING RING	#5	2
24.	72066178	COTTER PIN .12X1.00 PLAIN	#4	4
25.	72066185	COTTER PIN .16X1.00 PLAIN	#4	2
26.	72533594	ELBOW-M STR/90/M JIC 4 6	#3	4
27.	72601261	CAP SCREW M 8-1.25X 30 HHZ	#4	5
28.	72601263	CAP SCREW M 8-1.25X 80 HHZ	#4	1
29.	72601500	CAP SCREW M 6-1.00X 25 HHZ	#4	8
30.	72601762	WASHER-LOCK 6MM	#4	8
31.	72601785	WASHER-FLAT M 6	#4	8
32.	72601796	CAP SCREW M12-1.75X 40 HHZ	#4	4
33.	72601797	WASHER-LOCK 8MM	#4	4
34.	72601799	WASHER-FLAT M 8	#4	4
35.	72601800	WASHER-FLAT M12	#4	8
36.	72601952	NUT M8 HEX NYLOC ZINC	#4	1
37.	72601954	SET SCREW M10 X 1.5 SH SS	#5	4
38.	72661621	CLAMP	#4	2
39.	73511105	PUMP SYSTEM		2
40.	77041383	RELAY		1
41.	77041687	SWITCH-ROCKER BODY MOMENTARY		2
42.	77041688	SWITCH-ROCKER ACTUATOR		2
43.	77041689	SWITCH-ROCKER SINGLE MOUNTING PANEL		2
44.	77041722	SWITCH-EMERGENCY STOP TWIN NO/NC		1
REV. E 20080820				

Outrigger Cylinder, Left (51721372)



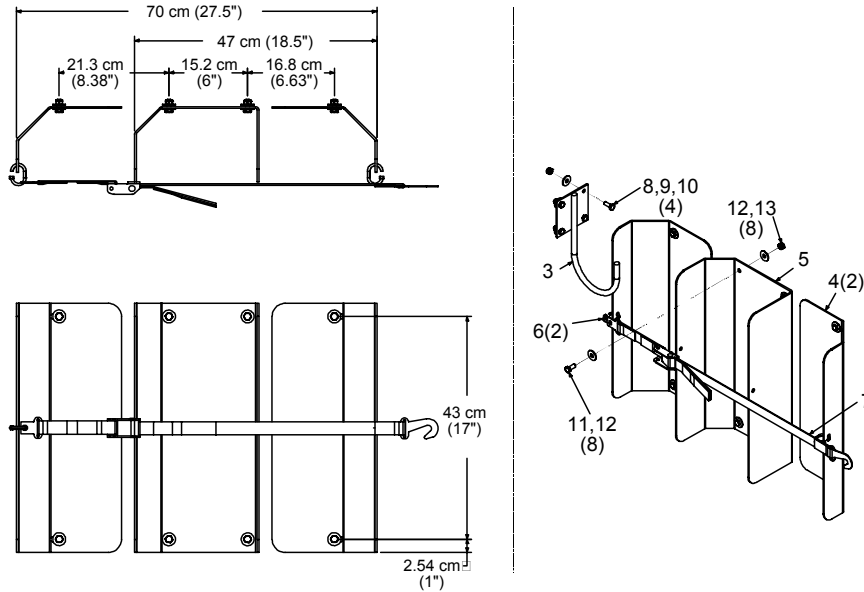
NOTES:

- 1 TO REDUCE DOWNTIME, REPLACE ALL COMPONENTS OF THE SEAL KIT WHENEVER THE CYLINDER IS DISASSEMBLED.
- 2 APPLY "NEVER-SEEZ" REGULAR GRADE ANTI-SEIZE AND LUBRICATING COMPOUND TO THREADS ON CYLINDER HEAD ONLY. KEEP AWAY FROM ALL SEALS.
- 3 APPLY "LUBRIPLATE" NO. 630-2 MEDIUM HEAVY, MULTI-PURPOSE LUBRICANT, TO ALL PISTON, HEAD GLAND, AND HOLDING VALVE SEALS, NYLON LOCK RING, CAST IRON PISTON RINGS, AND ROD STINGER THREADS.

51721372 CYLINDER DATA	
EXTEND	31.6 SQ-CM AREA / 1.8 L VOLUME (4.91 SQ-IN AREA / 0.39 GAL VOLUME)
RETRACT	11.4 SQ-CM AREA / 1.1 L VOLUME (1.77 SQ-IN AREA / 0.24 GAL VOLUME)
CASE	ø7.6 CM O.D. X 6.4 CM BORE X 60.5 CM LONG (ø3.00" O.D. X 2.5" BORE X 23.81" LONG)
ROD	ø3.8 CM O.D. X 63.5 CM LONG (ø1.50" O.D. X 25" LONG)
CYLINDER BORE	ø6.4 CM (ø2.50")
CYLINDER ROD	ø3.8 CM (ø1.50")
CYLINDER STROKE	45.7 CM (18")
DRY WEIGHT	17.6 KG (38.87 LB)
TEST PRESSURE	172 BAR (2500 PSI)
OPERATING PRESSURE	138 BAR (2000 PSI)

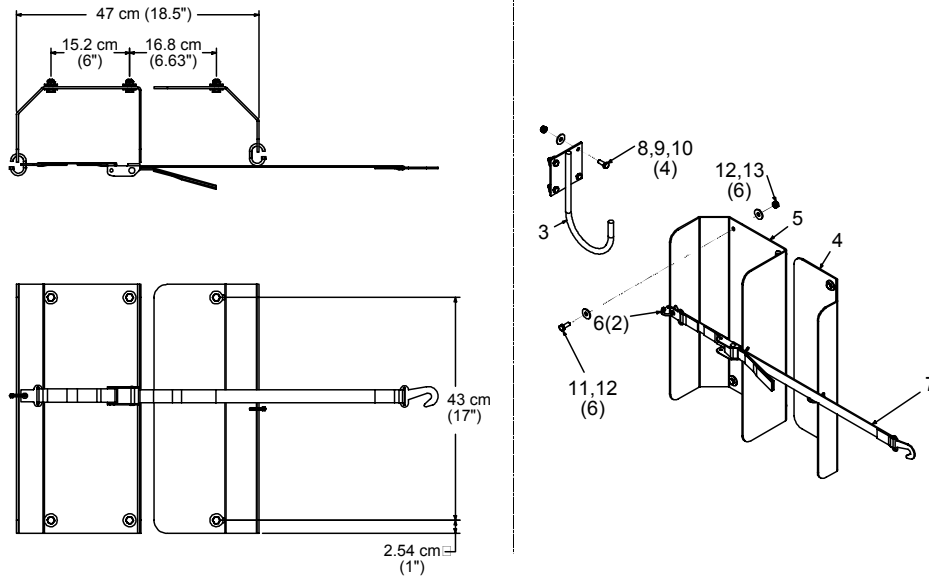
51721372 PARTS LIST				
ITEM	PART #	DESCRIPTION	KIT	QUANTITY
1.	52721255	CASE WELDMENT ASSEMBLY		1
2.	52721256	ROD ASSEMBLY		1
3.	6HD25015	HEAD		1
4.	6ID25125	PISTON		1
5.	6C075015	STOP TUBE		1
6.	73054218	VALVE-CHECK PILOT/OPEN NONVENTED 6.9 BAR (100PSI)		2
7.	60125699	PIN - LOCK TUBE		1
8.	9D101220	SEAL KIT		1
9.	7Q072137	O RING	#12	1
10.	7T2N4025	WEAR RING-PISTON	#12	1
11.	7T2NX417	WEAR RING-ROD	#12	2
12.	7T66P025	PISTON SEAL DYNAMIC	#12	1
13.	7R546015	U-CUP	#12	1
14.	7Q10P228	BACKUP RING	#12	1
15.	7Q072228	O RING	#12	1
16.	6A025015	WAFER LOCK IMT	#12	1
17.	7R14P015	ROD WIPER TYPE D	#12	1
18.	7T61N125	LOCK RING-NYLON	#12	1
REV. A 20080214				

Tank Bracket Kit, 3-Bottle (51721618)





51721618 PARTS LIST				
ITEM	PART #	DESCRIPTION	KIT #	QUANTITY
1.	51721501	HARDWARE KIT-BOLT-IN ADJUSTABLE SHELF	REF	1
2.	51721623	HARDWARE KIT-3-BOTTLE	REF	1
3.	52704224	HOOK-WELDMENT		1
4.	60129197	BRACKET		2
5.	60133023	BRACKET		1
6.	70058959	CHAIN CONNECTOR-THREADED .19		2
7.	70733516	STRAP-91 cm (36") BOTTLE HOLDER W/ SNAP HOOK		1
8.	72601278	CAP SCREW M 8-1.25X 20 HHZ	#1	4
9.	72601799	WASHER-FLAT M 8	#1	4
10.	72601952	NUT M 8 HEX NYLOC ZINC	#1	4
11.	72601278	CAP SCREW M 8-1.25X 20 HHZ	#2	8
12.	72601799	WASHER-FLAT M 8	#2	16
13.	72601952	NUT M 8 HEX NYLOC ZINC	#2	8
NEW 20080522				



Tank Bracket Kit, 2-Bottle (51721619)



51721619 PARTS LIST				
ITEM	PART #			
1.	51721501	HARDWARE KIT-BOLT-IN ADJUSTABLE SHELF	REF	1
2.	51721624	HARDWARE KIT-OXY/ACT 2 BOTTLE	REF	1
3.	52704224	HOOK-WELDMENT		1
4.	60129197	BRACKET		1
5.	60133023	BRACKET		1
6.	70058959	CHAIN CONNECTOR-THREADED .19		2
7.	70733516	STRAP-91 cm (36") BOTTLE HOLDER W/ SNAP HOOK		1
8.	72601278	CAP SCREW M 8-1.25X 20 HHZ	#1	4
9.	72601799	WASHER-FLAT M 8	#1	4
10.	72601952	NUT M 8 HEX NYLOC ZINC	#1	4
11.	72601278	CAP SCREW M 8-1.25X 20 HHZ	#2	6
12.	72601799	WASHER-FLAT M 8	#2	12
13.	72601952	NUT M 8 HEX NYLOC ZINC	#2	6

Thread Torque Chart (English)

FINE THREAD BOLTS (ENGLISH)					
SIZE	BOLT DIA.	GRADE 5  SAE J429 GRADE 5		GRADE 8  SAE J429 GRADE 8	
(DIA-TPI)	(INCHES)	PLAIN	PLATED	PLAIN	PLATED
		(FT-LB)	(FT-LB)	(FT-LB)	(FT-LB)
5/16-24	0.3125	19	14	27	20
3/8-24	0.375	35	26	49	35
7/16-20	0.4375	55	41	78	58
1/2-20	0.5	90	64	120	90
9/16-18	0.5625	120	90	170	130
5/8-18	0.625	170	130	240	180
3/4-16	0.75	300	225	420	315
7/8-11	0.875	445	325	670	500
1-12	1	645	485	995	745
1 1/8-12	1.125	890	670	1445	1085
1 1/4-12	1.25	1240	930	2010	1510
1 3/8-12	1.375	1675	1255	2710	2035
1 1/2-12	1.5	2195	1645	3560	2670

COARSE THREAD BOLTS (ENGLISH)					
SIZE	BOLT DIA.	GRADE 5  SAE J429 GRADE 5		GRADE 8  SAE J429 GRADE 8	
(DIA-TPI)	(INCHES)	PLAIN	PLATED	PLAIN	PLATED
		(FT-LB)	(FT-LB)	(FT-LB)	(FT-LB)
5/16-18	0.3125	17	13	25	18
3/8-16	0.375	31	23	44	33
7/16-14	0.4375	49	37	70	52
1/2-13	0.5	75	57	105	80
9/16-12	0.5625	110	82	155	115
5/8-11	0.625	150	115	220	160
3/4-10	0.75	265	200	375	280
7/8-9	0.875	395	295	605	455
1-8	1	590	445	910	680
1 1/8-7	1.125	795	595	1290	965
1 1/4-7	1.25	1120	840	1815	1360
1 3/8-6	1.375	1470	1100	2380	1780
1 1/2-6	1.5	1950	1460	3160	2370



NOTES



- 1 Tightening torques provided are midrange.
- 2 Consult bolt manufacturer's particular specifications, when provided.
- 3 Use flat washers of equal strength.
- 4 All torque measurements are given in foot-pounds.
- 5 Torque values specified are for bolts with residual oils or no special lubricants applied. If special lubricants of high stress ability, such as Never-Seez compound graphite and oil, molybdenum disulphite, colloidal copper or white lead are applied, multiply the torque values in the charts by the factor .90. The use of Loctite does not affect the torque values listed above.

WARNING

Anytime a gear-bearing bolt is removed, it must be replaced with a new bolt of the identical grade and size. Once a bolt has been torqued to 75% of its proof load and then removed, the torque coefficient may no longer be the same as when the bolt was new thus giving indeterminate clamp loads after torquing. Failure to replace gear-bearing bolts may result in bolt failure due to metal fatigue causing death or serious injury.

Thread Torque Chart (Metric)

FINE THREAD TORQUE CHART (METRIC)					
TIGHTENING TORQUE					
SIZE (DIA- TPI)	BOLT DIA. (INCHES)	 SAE J429 GRADE 5		 SAE J429 GRADE 8	
		PLAIN (KG-M)	PLATED (KG-M)	PLAIN (KG-M)	PLATED (KG-M)
5/16-24	0.3125	3	2	4	3
3/8-24	0.375	5	4	7	5
7/16-20	0.4375	8	6	11	8
1/2-20	0.5	12	9	17	12
9/16-18	0.5625	17	12	24	18
5/8-18	0.625	24	18	33	25
3/4-16	0.75	41	31	58	44
7/8-11	0.875	62	45	93	69
1-12	1	89	67	138	103
1 1/8-12	1.125	123	93	200	150
1 1/4-12	1.25	171	129	278	209
1 3/8-12	1.375	232	174	375	281
1 1/2-12	1.5	304	228	492	369

COARSE THREAD TORQUE CHART (METRIC)					
TIGHTENING TORQUE					
SIZE (DIA- TPI)	BOLT DIA (INCHES)	 SAE J429 GRADE 5		 SAE J429 GRADE 8	
		PLAIN (KG-M)	PLATED (KG-M)	PLAIN (KG-M)	PLATED (KG-M)
5/16-18	0.3125	2	2	3	2
3/8-16	0.375	4	3	6	5
7/16-14	0.4375	7	5	10	7
1/2-13	0.5	10	8	15	11
9/16-12	0.5625	15	11	21	16
5/8-11	0.625	21	16	30	22
3/4-10	0.75	37	28	52	39
7/8-9	0.875	55	41	84	63
1-8	1	82	62	126	94
1 1/8-7	1.125	110	82	178	133
1 1/4-7	1.25	155	116	251	188
1 3/8-6	1.375	203	152	329	246
1 1/2-6	1.5	270	210	438	328

NOTES

- 1 Tightening torques provided are midrange.
- 2 Consult bolt manufacturer's particular specifications, when provided.
- 3 Use flat washers of equal strength.
- 4 All torque measurements are given in kilogram-meters.
- 5 Torque values specified are for bolts with residual oils or no special lubricants applied. If special lubricants of high stress ability, such as Never-Seez compound graphite and oil, molybdenum disulphite, collodial copper or white lead are applied, multiply the torque values in the charts by the factor .90. The use of Loctite does not affect the torque values listed above.

WARNING

Anytime a gear-bearing bolt is removed, it must be replaced with a new bolt of the identical grade and size. Once a bolt has been torqued to 75% of its proof load and then removed, the torque coefficient may no longer be the same as when the bolt was new thus giving indeterminate clamp loads after torquing. Failure to replace gear-bearing bolts may result in bolt failure due to metal fatigue causing death or serious injury.

Thread Torque Chart - Metric Bolts

METRIC BOLT TORQUE								
		Class 8.8		Class 9.8		Class 10.9		Socket Head 12.9 as received
Size	Pitch	Dry	Lubricated	Dry	Lubricated	Dry	Lubricated	
M3	0.5							2.4
M4	0.7	3 (28*)	1.8 (17*)	3.5 (30*)	2 (18*)	4.5 (39*)	2.5 (24*)	5.6
M5	0.8	6(57*)	3.6(34*)	7(61*)	4(37*)	9(78*)	5.5(47*)	
M6	1	11(8)	6.5(5)	12(9)	7(6)	17(11)	10(7)	19.3
M7	1	20(14)	12(8)	22(16)	13(10)	28(20)	17(12)	
M8	1.25	28(20)	17(12)	29(21)	17(13)	40(28)	24(17)	47
	1	30(21)	18(13)			42(30)	25(18)	
M10	1.5	56(40)	34(24)	57(42)	34(25)	77(55)	46(33)	93
	1.25	58 (41)	35 (25)			80 (57)	48 (35)	
M12	1.75	97 (69)	58 (42)	100 (73)	60 (45)	135 (95)	80 (57)	162
	1.25	102 (73)	61 (45)			146 (105)	90 (63)	
M14	2	155 (109)	90 (65)	156 (115)	95 (70)	213 (150)	130 (90)	
	1.5	165 (116)	100 (70)			227 (160)	135 (95)	
M16	2	235 (166)	140 (100)	245 (180)	150 (110)	330 (235)	200 (140)	400
	1.5	245 (175)	150 (105)			345 (245)	210 (145)	
M18	2.5	320 (228)	190 (135)			455 (325)	275 (195)	
	1.5	350 (250)	210 (150)			500 (355)	300 (215)	
M20	2.5	455 (325)	275 (195)	475 (350)	285 (210)	640 (455)	385 (275)	785
	1.5	500 (355)	300 (215)			695 (495)	415 (300)	
M22	2.5	615 (440)	370 (265)			860 (615)	515 (370)	
	1.5	660 (470)	400 (280)			925 (660)	550 (400)	
M24	3	780 (560)	470 (335)	815 (600)	490 (360)	1100 (780)	660 (470)	1,357
	2	850 (600)	500 (360)			1190 (850)	715 (510)	
M27	3	1150 (825)	695 (500)			1630 (1160)	980 (700)	
M30	3.5	1565 (1115)	950 (675)	1630 (1200)	980 (720)	2200 (1580)	1320 (950)	2,693
M33	3.5	2130 (1520)	1280 (900)			3000 (2150)	1800 (1290)	
M36	4	2730 (1950)	1650 (1175)			3850 (2750)	2300 (1650)	
M39	4	3550 (1550)	2130 (1525)			5000 (3550)	3000 (2130)	

NOTE:

- 1 All units in Newton Meters (Foot-Pounds) unless marked with **. Units for torques marked with ** are Inch-Pounds.
- 2 Dry torques may vary by as much as $\pm 20\%$ depending on the type of nut used and the surface finish of the nut.
- 3 Torques are for zinc plated product. Increase torque by 50% for non-plated product.
- 4 Lubricated values are predicted when bolts are installed with Never-Seez regular grade anti-seize lubricating compound or equivalent.

WARNING: Anytime a gear-bearing bolt is removed, it must be replaced with a new bolt of the identical grade and size. Once a bolt has been torqued to 75% of its proof load and then removed, the torque coefficient may no longer be the same as when the bolt was new thus giving indeterminate clamp loads after torquing. Failure to replace gear-bearing bolts may result in bolt failure due to metal fatigue causing death or serious injury.

IMT Limited Warranty Policy

Warranty Coverage – Products manufactured by Iowa Mold Tooling Co., Inc. (IMT) are warranted to be free from defects in material and workmanship, under proper use, application and maintenance in accordance with IMT's written recommendations, instructions and specifications as follows:

- 1) **One (1) year: labor on IMT workmanship** from the date the unit is put into service by the selling IMT dealer, as indicated on the warranty registration, not to extend beyond two (2) years from the date of manufacture by IMT.
- 2) **One (1) year: original and replacement IMT parts** from the date the unit or part is put into service by the selling IMT dealer, as indicated on the warranty registration, not to extend beyond two (2) years from the date of manufacture by IMT.
- 3) **Two (2) years: original rotary screw air end assembly** from the date the unit is put into service by the selling IMT dealer, as indicated on the warranty registration, not to extend beyond three (3) years from the date of manufacture. All other compressor components including the shaft seal are warranted for one year, not to extend beyond 18 months from the date of shipment from IMT.
- 4) **Three (3) years: original IMT Crane structural parts** from the date the unit is put into service by the selling IMT dealer, as indicated on the warranty registration, not to extend beyond four (4) years from the date of manufacture by IMT. Structural items are exclusively specified to be the crane base, mast, and booms.
- 5) **Three (3) years: paint coverage** on structural components such as crane bases, masts, booms, truck body doors and body panels to be free from defects such as corrosion, blisters, unreasonable color or gloss loss, or delamination determined to result from paint failure. This warranty is effective from the date the unit is put into service by the selling IMT dealer, as indicated on the warranty registration and not to extend beyond four (4) years from the date of manufacture from IMT. Damage such as chips, scratches, and corrosion due to dirt build-up or normal wear that occurs through usage of the product is not covered under this warranty. Rust bleed out from inaccessible structural features as a result of prolonged moisture exposure does not constitute a failure in paint coverage or adhesion and is not covered under this warranty.
- 6) **Five (5) years: Dominator rust-through coverage** for body panels, doors, and wheel wells from the date the unit is put into service by the selling IMT dealer, as indicated on the warranty registration, not to extend beyond six (6) years from the date of manufacture. Rust-through damage as a result of surface and/or paint damage, product neglect or abuse, or structural modification is not covered under this warranty.
- 7) **Five (5) year: Sitestar lubrication tanks structural coverage** from the date the unit is put into service by the selling IMT dealer, as indicated on the warranty registration, not to extend beyond six (6) years from the date of manufacture.

8) Ninety (90) days: Rebuilt parts from the date of shipment from IMT.

IMT's obligation under this warranty is limited to, and the sole remedy for any such defect shall be the repair or replacement (at IMT's option) of unaltered parts returned to IMT, freight prepaid, and proven to have such defect, provided such defect occurs within the above stated warranty period, is reported to IMT within fourteen (14) days of its occurrence, and all claims and failing parts are returned to IMT within thirty (30) days after the repair is completed. IMT pays ground freight one-way only. Premium freight will be at the customer's expense. Parts not of IMT manufacture are warranted only to the extent they are warranted by the original manufacturer.

IMPLIED WARRANTY EXCLUDED - Only authorized IMT warranties are valid and applicable to IMT product. These warranties are in lieu of all other express or implied warranties or representations, including warranties of merchantability or fitness for any particular purpose or of any other obligations on the part of IMT. IMT may, in specific instances and by written approval of an officer of the firm in advance of any bid or sale, modify or extend the terms of the standard IMT warranty.

WARRANTY REGISTRATION AND CLAIMS – The unit warranty is instated by completion of the product registration by the end-user. Failure to return the completed product registration form to IMT at the time of purchase may result in invalidation of product warranty. Warranty claims must be submitted and shall be processed in accordance with IMT's established warranty claim procedures.

WARRANTY SERVICE - Warranty service will be performed by any IMT distributor authorized to sell new IMT products of the type involved or by any IMT Service Center authorized to service the type of product involved or by IMT in the event of direct sales made by IMT. At the time of requesting warranty service, the purchaser must present evidence of the date of delivery of the product. The purchaser shall pay any premium for overtime labor requested by the purchaser, any charge for making service calls and for transporting the equipment to the place where warranty work is performed, unless otherwise authorized in writing by IMT.

PARTS AND LABOR RATE - Labor reimbursement for warranty claims will be one-hundred percent (100%) of the standard hourly retail labor rate, as reported to IMT, multiplied by the number of work hours listed on the warranty service report. IMT reserves the right to modify those claims for warranty work hours which appear excessive. Part reimbursement for warranty claims will be one-hundred percent (100%) of the selling price paid by the distributor to IMT. Labor is not included on service parts.

WARRANTY VOIDED - All obligations of IMT under this warranty shall be terminated: (1) if service other than normal maintenance or normal replacement of service items is performed by someone other than an authorized IMT dealer, (2) if product is modified or altered in ways not approved by IMT.

PURCHASER'S RESPONSIBILITY - This warranty covers only defective material and workmanship. It does not cover depreciation or damage caused by normal wear, accident, improper protection in storage, or improper use. The purchaser has the obligation of performing the care and maintenance duties discussed in IMT's written recommendations, instructions and specifications. Any damage which results because of purchaser's failure to perform such duties shall not be covered by this warranty. The cost of normal maintenance and normal replacement of service items such as wear pads, oil, etc. shall be paid by the purchaser.

CONSEQUENTIAL DAMAGES - The only remedies the purchaser has in connection with the breach of performance of any warranty on IMT products are those set forth above. In no event will the dealer, IMT or any company affiliated with IMT, be liable for business interruptions, loss of sales and/or profits, rental or substitute equipment, costs of delay for any other special, indirect, incidental or consequential losses, costs or damages.

REPRESENTATIONS EXCLUDED - IMT products are subject to no expressed, implied or statutory warranty other than herein set forth, and no agent, representative or distributor of the manufacturer has any authority to alter the terms of this warranty in any way whatsoever or to make any representations or promises, express or implied, as to the quality or performance of IMT products other than those set forth above.

CHANGE IN DESIGN - IMT reserves the right to make changes in design or improvements upon its products without imposing any obligation upon itself to install the same upon its products theretofore manufactured.



IMT Warranty Policy 99901305 (Effective January 1, 2002)