
Manual # 99905293

42/269 Technical Specifications

Revision Date 20120427



IOWA MOLD TOOLING CO., INC.

PO Box 189

Garner, IA 50438

Tel: 641-923-3711 FAX: 641-923-2424

Website: <http://www.imt.com>

Copyright © 2012 Iowa Mold Tooling Co., Inc.
All rights reserved

No part of this publication may be reproduced, stored in a retrieval system, or transmitted in any form or by any means, electronic, mechanical, photocopying, recording or otherwise without the prior written permission of Iowa Mold Tooling Co., Inc.

Iowa Mold Tooling Co., Inc. is an Oshkosh Corporation company.

Contents

Technical Data and Charts	3
42/269 Technical Specifications	4
42/269 Pressure Settings	5
42/269 K2 Capacity Chart	6
42/269 K3 Capacity Chart	7
42/269 K4 Capacity Chart	8
42/269 K6 Capacity Chart	9
42/269 Hydraulic Diagram	10
42/269 Dimensional Diagram	11

CHAPTER 1

Technical Data and Charts

In This Chapter

42/269 Technical Specifications	3
42/269 Pressure Settings	5
42/269 K2 Capacity Chart	6
42/269 K3 Capacity Chart	7
42/269 K4 Capacity Chart	8
42/269 K6 Capacity Chart	9
42/269 Hydraulic Diagram	10
42/269 Dimensional Diagram	11

42/269 Technical Specifications

42/269	2-Hydraulic	3-Hydraulic	4-Hydraulic	6-Hydraulic
Crane Rating*	268,345 ft-lb (37.1 tm)	260,390 ft-lb (36.0 tm)	256,770 ft-lb (35.5 tm)	246,645 ft-lb (34.1 tm)
Maximum Horizontal Reach	28' 3" (8.6 m)	35' 1" (10.7 m)	42' 4" (12.9 m)	56' 5" (17.2 m)
Maximum Vertical Reach	36' 9" (11.2 m)	44' 0" (13.4 m)	50' 10" (15.5 m)	65' 0" (19.8 m)
Maximum Capacity	29,760 lb (13,500 kg)	29,760 lb (13,500 kg)	29,760 lb (13,500 kg)	27,560 lb (12,500 kg)
Maximum Capacity @ Max Reach	9590 lb (4350 kg)	7210 lb (3270 kg)	5730 lb (2600 kg)	3460 lb (1570 kg)
Crane Weight **	7925 lb (3595 kg)	8490 lb (3850 kg)	8975 lb (4070 kg)	9920 lb (4500 kg)
Hook Approach				
Vertical	9' 3" (2812 mm)	9' 0" (2750 mm)	8' 10" (2689 mm)	8' 0" (2451 mm)
Horizontal	2' 3" (0.68 m)	2' 6" (0.76 m)	2' 9" (0.84 m)	3' 3" (1.00 m)
Center of Gravity - Stored				
Vertical	2' 9" (840 mm)	2' 9" (840 mm)	2' 9" (840 mm)	2' 9" (850 mm)
Horizontal (Centerline of rotation to bridge)	10.6" (270 mm)	11.1" (282 mm)	11.4" (290 mm)	11.2" (285 mm)
Maximum Hydraulic Reach (Fly-jib)				
Vertical		(K3) 69' 11" (21.3 m)	(K3) 76' 9" (23.4 m)	
Horizontal		61' 0" (18.6 m)	68' 3" (20.8 m)	
Vertical			(K4) 82' 4" (25.1 m)	
Horizontal			73' 6" (22.4 m)	
Capacity at Maximum Reach (Fly-jib)		2095 lb (950 kg)	(K3) 1985 lb (900 kg)	
			(K4) 1435 lb (650 kg)	
Weight (Fly-jib)		1455 lb (660 kg)	(K3) 1455 lb (660 kg)	
			(K4) 1640 lb (743 kg)	

42/269 Specifications	
Stabilizer Pad Diameter	9.0" (225 mm)
Crane Storage Height	7' 11" (2425 mm)
Mounting Space (K2 - K3) ***	3' 8" (1108 mm)
Mounting Space (K4 - K6) ***	4' 1" (1250 mm)
Rotational Torque	34,710 ft-lb (4.8 tm)
Rotation	420°
Optimum Pump Performance	17 U.S. gpm (65 L/min)
System Pressure	3,770 psi (260 bar)
Oil Reservoir Capacity	42.3 gal (160 L)
Stabilizer Extension Span	
Manual Out/Hydraulic Down	18' 8" (5.7 m)
Weight	1100 lb (500 kg)
Hydraulic Out/Hydraulic Down	22' 0" (6.7 m)
Weight	1400 lb (635 kg)

Minimum Chassis Specifications	
Front Axle Rating (GAWR)	16,000 lb (7255 kg)
Rear Axle Rating (GAWR)	40,000 lb (18,145 kg)
Resistance to Bending Moment	3,500,000 in-lb (403,245 kg-m)

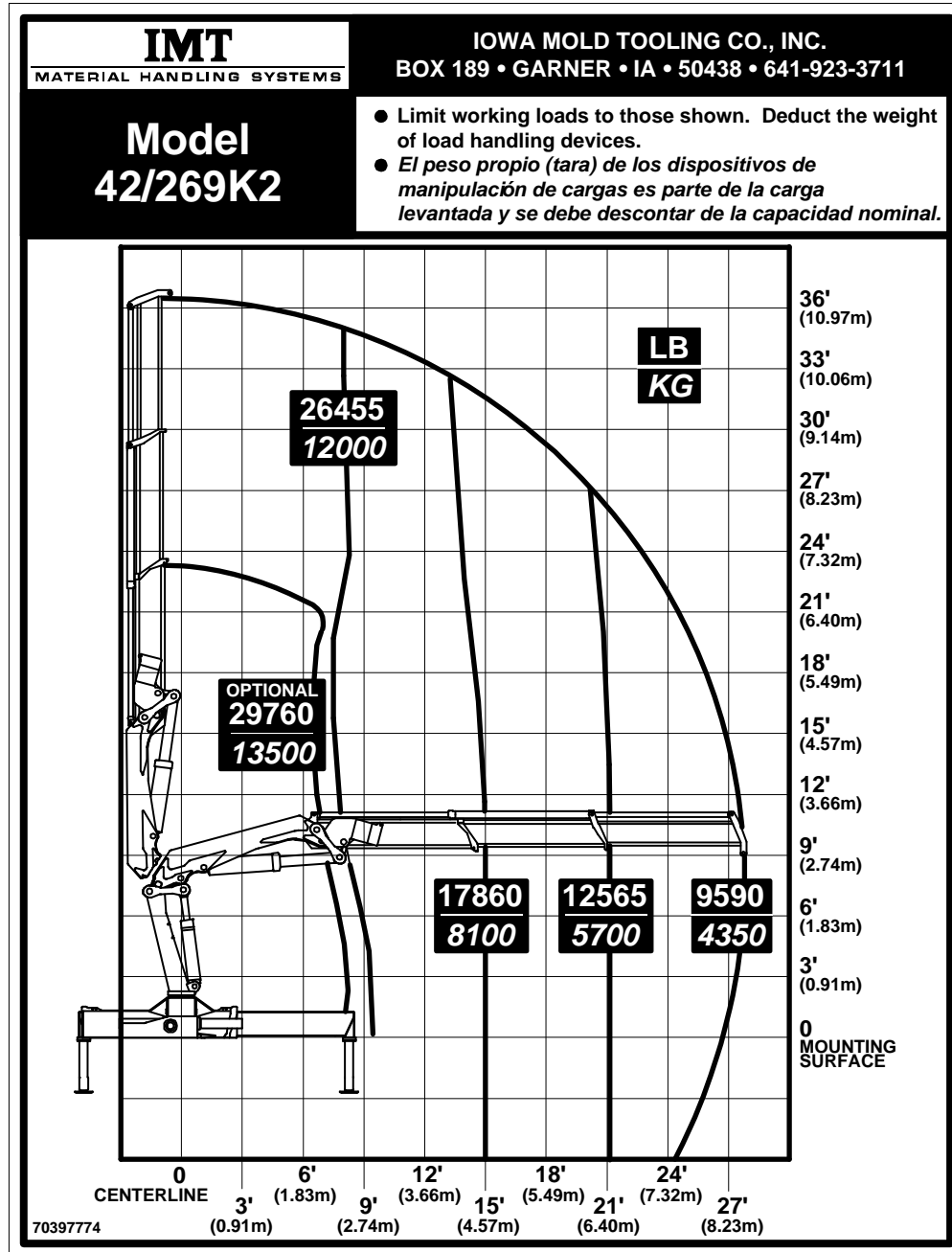
42/269 Pressure Settings

WORKING PRESSURE ON MAIN-RELIEF VALVE & PORT RELIEF VALVES			
Function	Direction	Port	
Main-relief valve			4205 psi (290 bar)
Slewing system	right	A	2755 psi (190 bar)
	left	B	2755 psi (190 bar)
Boom Cylinder	down	A	2175 psi (150 bar)
	up	B	4350 psi (300 bar)
Jib Cylinder	up	A	4350 psi (300 bar)
	down	B	3045 psi (210 bar)
Extension Cylinders	extend	A	3335 psi (230 bar)
	retract	B	P
Extension Cylinder, Stabilizers		A	1015 psi (70 bar)
		B	1815 psi (125 bar)
Stabilizer Legs / Grab, Rotator		A	2540 psi (175 bar)
		B	2540 psi (175 bar)
Separate Stabilizer Valve			2540 psi (175 bar)

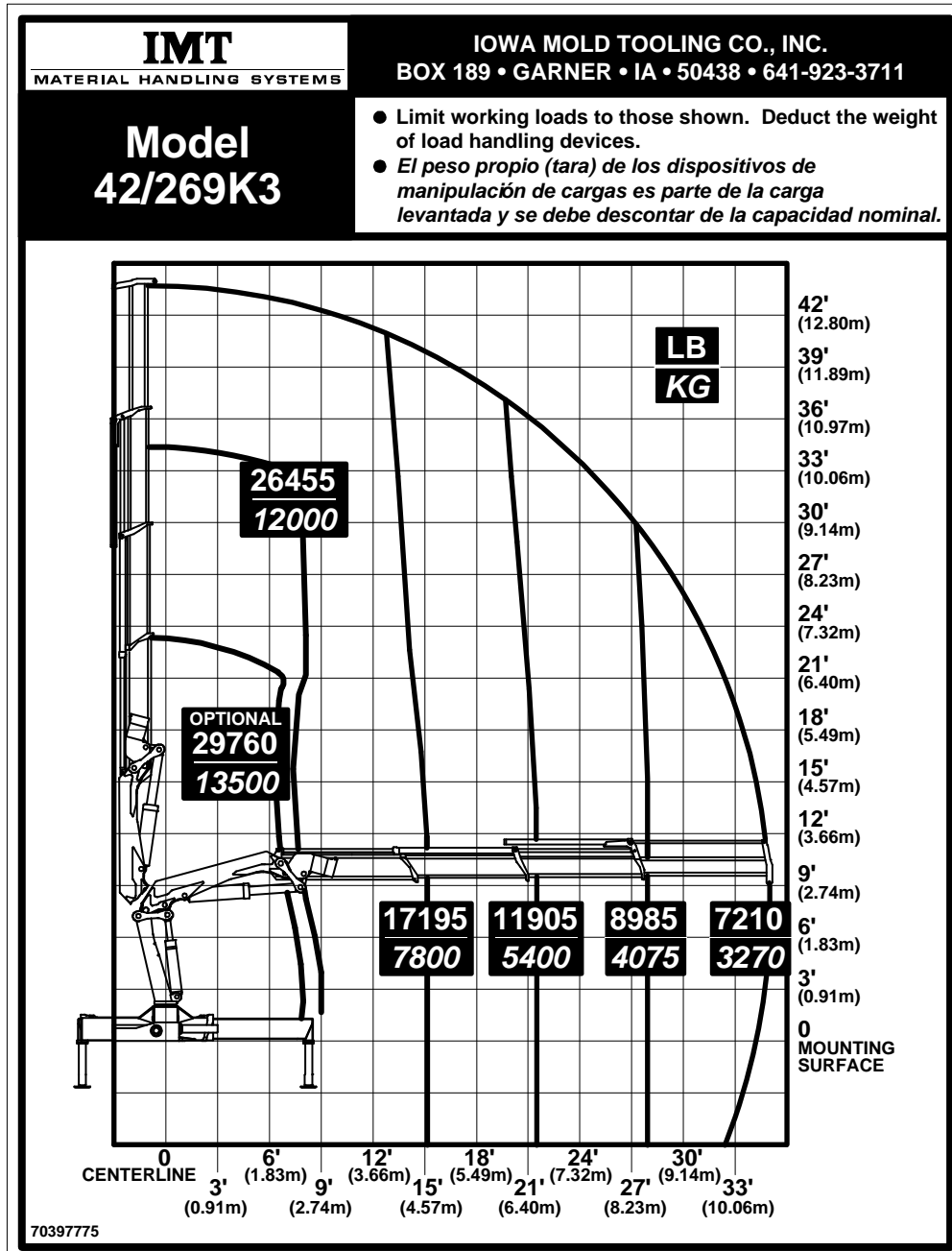
OPENING PRESSURE ON LOAD-HOLDING VALVES	
Boom Cylinder	4860 psi (335 bar)
External Relief-Valve	4495 psi (310 bar)
Jib Cylinder	4715 psi (325 bar)
Extension Cylinder, Retract (B-port)	4350 psi (300 bar)
Extension Cylinder, Extend (A-Port)	3265 psi (225 bar)
LMB	4060 psi (280 bar)
HDL	3625 psi (250 bar)

MAXIMUM PUMP PERFORMANCE	
Pump Performance	17 gpm (65 l/min)

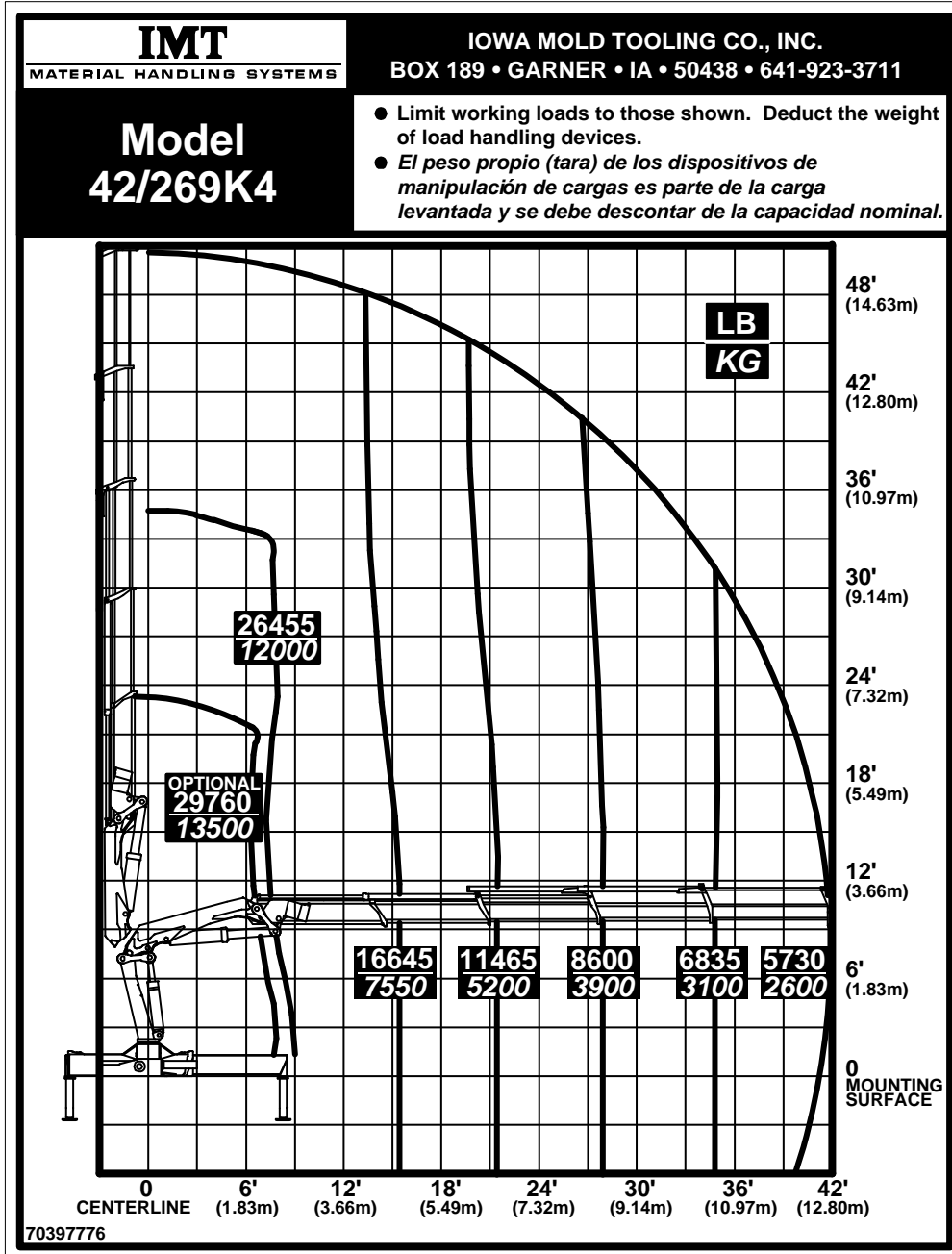
42/269 K2 Capacity Chart



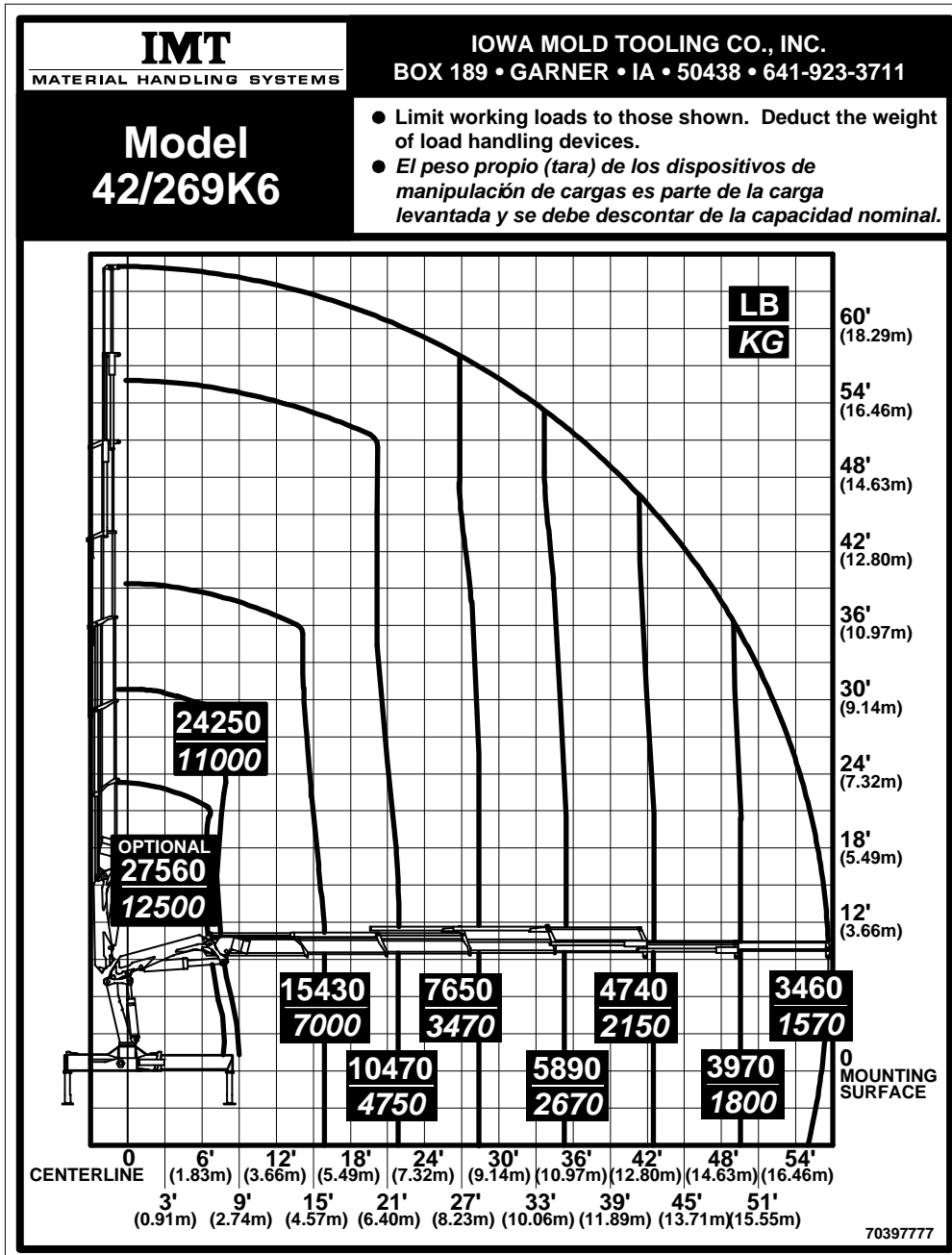
42/269 K3 Capacity Chart



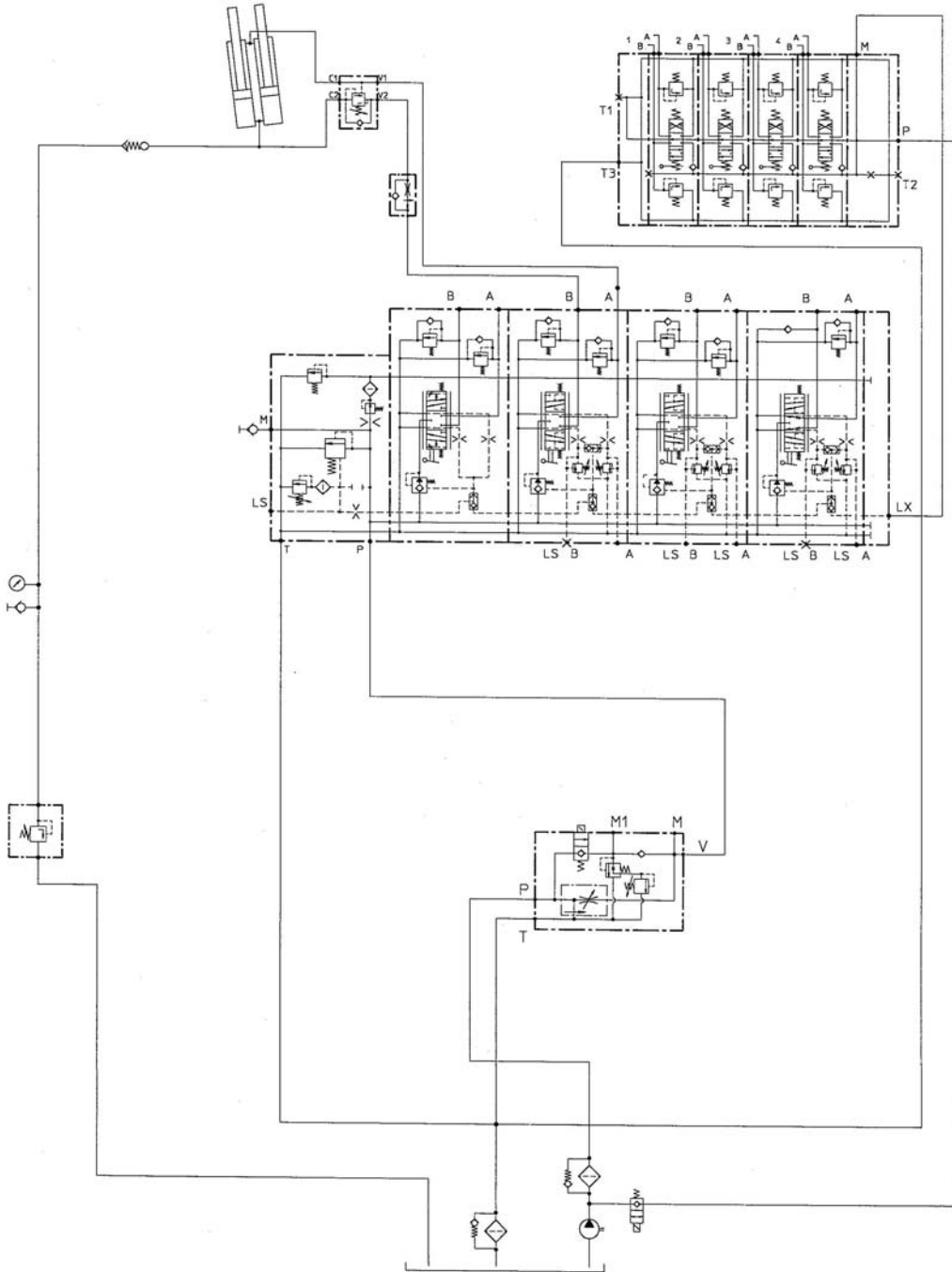
42/269 K4 Capacity Chart



42/269 K6 Capacity Chart



42/269 Hydraulic Diagram



42/269 Dimensional Diagram

