

---

Manual # 99905286

# 38/262 Technical Specifications

Revision Date 20111214



IOWA MOLD TOOLING CO., INC.

PO Box 189

Garner, IA 50438

Tel: 641-923-3711 FAX: 641-923-2424

Website: <http://www.imt.com>

Copyright © 2011 Iowa Mold Tooling Co., Inc.  
All rights reserved

No part of this publication may be reproduced, stored in a retrieval system, or transmitted in any form or by any means, electronic, mechanical, photocopying, recording or otherwise without the prior written permission of Iowa Mold Tooling Co., Inc.

Iowa Mold Tooling Co., Inc. is an Oshkosh Corporation company.



---

# Contents

<b>Technical Data and Charts</b>	<b>3</b>
38/262 Technical Specifications .....	4
38/262 Pressure Settings .....	5
38/262 K2 Capacity Chart .....	6
38/262 K3 Capacity Chart .....	7
38/262 K4 Capacity Chart .....	8
38/262 K5 Capacity Chart .....	9
38/262 K6 Capacity Chart .....	10
38/262 K7 Capacity Chart .....	11
38/262 K8 Capacity Chart .....	12
38/262 Dimensional Drawing .....	13
38/262 Stabilizer Drawing .....	14
38/262 Hydraulic Diagram .....	15
38/262 Swing Radius .....	16



## CHAPTER 1

# Technical Data and Charts

## In This Chapter

38/262 Technical Specifications .....	3
38/262 Pressure Settings .....	5
38/262 K2 Capacity Chart .....	6
38/262 K3 Capacity Chart .....	7
38/262 K4 Capacity Chart .....	8
38/262 K5 Capacity Chart .....	9
38/262 K6 Capacity Chart .....	10
38/262 K7 Capacity Chart .....	11
38/262 K8 Capacity Chart .....	12
38/262 Dimensional Drawing .....	13
38/262 Stabilizer Drawing .....	14
38/262 Hydraulic Diagram .....	15
38/262 Swing Radius .....	16

## 38/262 Technical Specifications

38/262	2 - Hydraulic	3 - Hydraulic	4 - Hydraulic	5 - Hydraulic	6 - Hydraulic	7 - Hydraulic	8 - Hydraulic
Crane Rating*	261,835 ft lb (36.2 tm)	255,325 ft lb (35.3 tm)	247,370 ft lb (34.2 tm)	239,410 ft lb (33.1 tm)	238,690 ft lb (33.0 tm)	232,905 ft lb (32.2 tm)	231,455 ft lb (32.0 tm)
Maximum Horizontal Reach	26' 7" (8.1 m)	33' 2" (10.1 m)	40' 0" (12.2 m)	47' 3" (14.4 m)	54' 6" (16.6 m)	62' 4" (19.0 m)	69' 11" (21.3 m)
Maximum Vertical Reach	35' 4" (10.8 m)	42' 3" (12.9 m)	49' 1" (15.0 m)	56' 3" (17.1 m)	63' 6" (19.4 m)	71' 4" (21.7 m)	76' 3" (23.2 m)
Maximum Capacity	18,145 lb (8230 kg)	17,285 lb (7840 kg)	16,735 lb (7590 kg)	16,225 lb (7360 kg)	15,830 lb (7180 kg)	15,410 lb (6990 kg)	15,015 lb (6810 kg)
Max Cap @ Max Reach	9745 lb (4420 kg)	7255 lb (3290 kg)	5580 lb (2530 kg)	4300 lb (1950 kg)	3375 lb (1530 kg)	2645 lb (1200 kg)	2050 lb (930 kg)
Crane Weight **	6945 lb (3150 kg)	7520 lb (3410 kg)	8070 lb (3660 kg)	8600 lb (3900 kg)	8995 lb (4080 kg)	9350 lb (4240 kg)	9700 lb (4400 kg)
Hook Approach							
Vertical	9' 4" (2.84 m)	9' 0" (2.74 m)	8' 10" (2.68 m)	8' 8" (2.63 m)	8' 5" (2.57 m)	8' 3" (2.52 m)	8' 1" (2.47 m)
Horizontal	3' 11" (1.19 m)	4' 1" (1.24 m)	4' 3" (1.29 m)	4' 5" (1.35 m)	4' 7" (1.40 m)	4' 9" (1.45 m)	4' 11" (1.5 m)
Center of Gravity - Stored							
Vertical	2' 10" (870 mm)	2' 11" (890 mm)	3' 0" (910 mm)	3' 0" (925 mm)	3' 1" (940 mm)	3' 2" (955 mm)	3' 2" (970 mm)
Horizontal (C/L RotTo Bridge)	12.6" (320 mm)	12.6" (320 mm)	12.2" (310 mm)	11.8" (300 mm)	11.6" (295 mm)	11.4" (290 mm)	11.2" (285 mm)

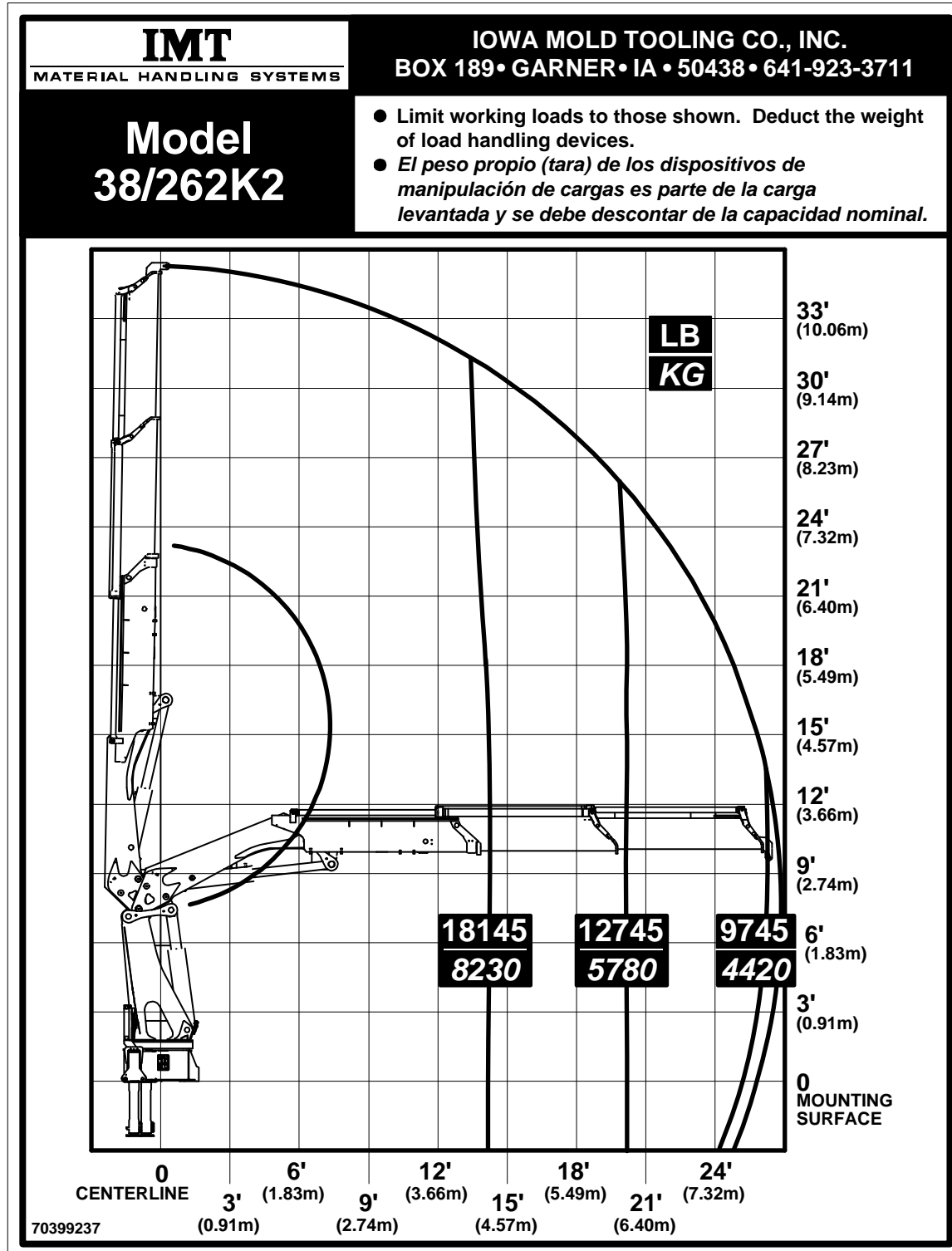
\* Crane rating (ft-lb) is the rated load (lb) multiplied by the respective distance (ft) from centerline of rotation with all extensions retracted and the inner and outer booms in a horizontal position, per ANSI B30.22. \*\* Crane weight does not include stabilizers.

38/262 Specifications	
Stabilizer Pad Diameter	4" (100 mm)
Crane Storage Height	7' 10" (2384 mm)
Mounting Space ***	3' 9" (1148 mm)
Rotational Torque	29,505 ft lb (4.1 tm)
Rotation	400°
Optimum Pump Performance	21.1 gpm (80 L/min)
System Pressure	5,075 psi (350 Bar)
Stabilizer Extension Span	
Standard (manual out / hydraulic down)	18' 3" (5550 mm)
Weight	750 lb (340 kg)
Option (hydraulic out / hydraulic down)	25' 6" (7770 mm)
Weight	1,280 lb (580 kg)
*** Maximum swing clearance radius required is 29" (737 mm) at 8' 6" (2582 mm) from top of chassis frame.	
Minimum Chassis Specifications	
Front Axle Rating (GAWR)	16,000 lb (7260 kg)
Rear Axle Rating (GAWR)	40,000 lb (18,145 kg)
Resistance To Bending Moment	3,500,000 in-lb (403,245 kg-m)

## 38/262 Pressure Settings

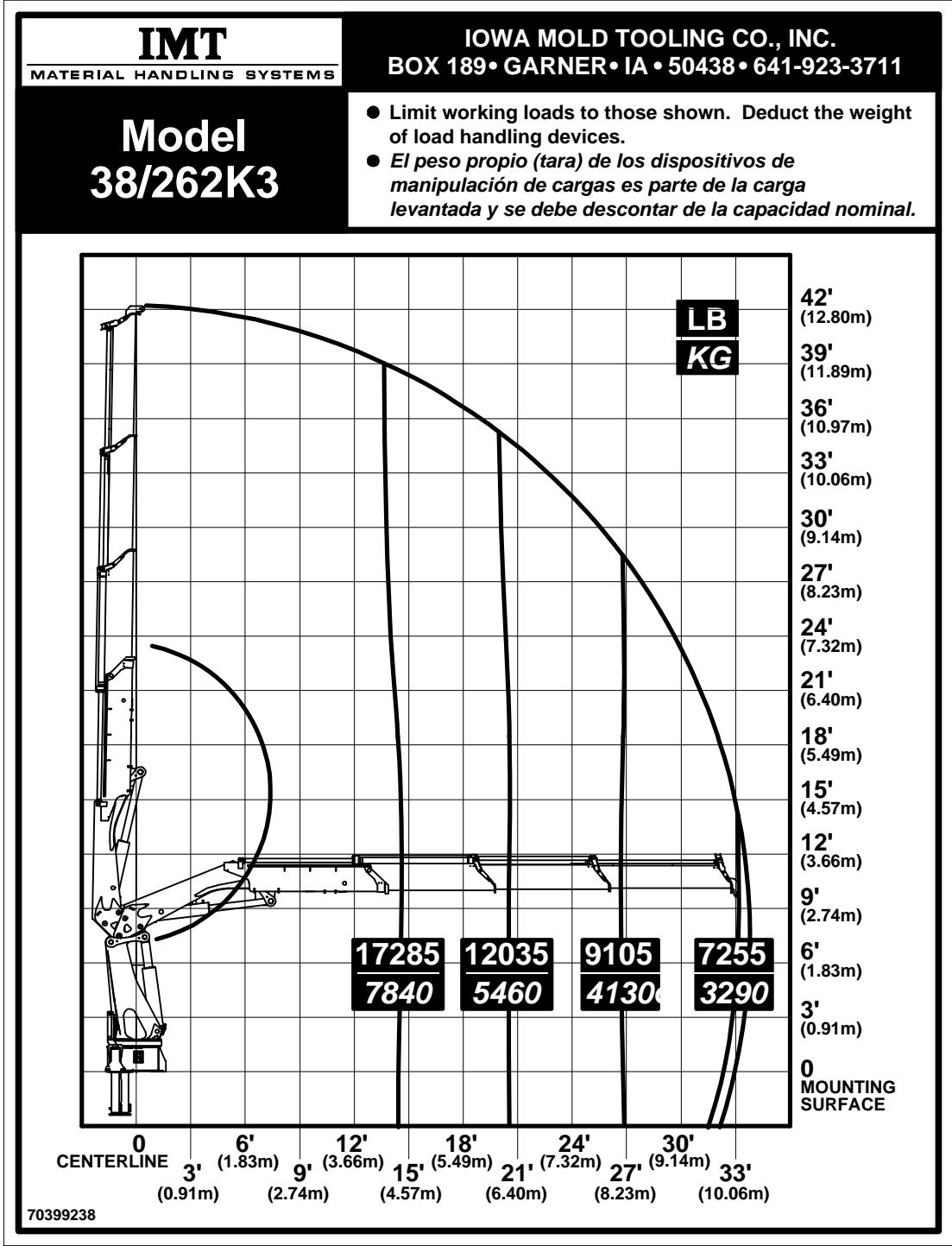
<b>WORKING PRESSURE ON MAIN-RELIEF VALVE &amp; PORT RELIEF VALVES</b>				
Main-relief valve				5365 psi (370 lb)
<b>FUNCTION</b>	<b>DIRECTION</b>	<b>PORT</b>	<b>PORT-RELIEF VALVES</b>	<b>LS-PRESSURE ADJUSTMENT</b>
Slewing system	Right	A	P	2175 psi (150 bar)
	Left	B	P	2175 psi (150 bar)
Boom cylinder	Up	A	5510 psi (380 bar)	5075 psi (350 bar)
	Down	B	1815 psi (125 bar)	1450 psi (100 bar)
Jib cylinder	Up	A	5510 psi (380 bar)	5075 psi (350 bar)
	Down	B	2900 psi (200 bar)	2540 psi (175 bar)
Extension cylinders	Extend	A	P	4350 psi (300 bar)
	Retract	B	P	4350 psi (300 bar)
Rotator	Right	A	P	725-4350 psi (50-300 bar)
	Left	B	P	725-4350 psi (50-300 bar)
Grab	Open	A	4640 psi (320 bar)	725-4350 psi (50-300 bar)
	Close	B	4640 psi (320 bar)	725-4350 psi (50-300 bar)
Winch 3.2T	Lift	A	P	3045 psi (210 bar)
	Lower	B	P	3045 psi (210 bar)
Winch 2.5T	Lift	A	P	2685 psi (185 bar)
	Lower	B	P	2685 psi (185 bar)
Separate stabilizer valve		All	2175 psi (150 bar)	2175 psi (150 bar)
<b>WORKING PRESSURE ON LOAD-HOLDING VALVES</b>				
Function	Direction	Port	Opening Pressure	
Slewing system	Right		2320 psi (160 bar)	
	Left		2320 psi (160 bar)	
Boom cylinder	Up		5510 psi (380 bar)	
	Down		-	
Jib cylinder	Up		5510 psi (380 bar)	
	Down		3045 psi (210 bar)	
Extension cylinders	Retract		6235 psi (430 bar)	
	Extend		3045 psi (210 bar)	
<b>PRESSURE SETTING FOR LOAD MOMENT LIMITATION (LMB)</b>				
Load moment limitation (LMB)			4860 psi (335 bar)	
HDL			4060 psi (280 bar)	
<b>MAXIMUM PUMP PERFORMANCE</b>				
Pump performance (1 x fixed)			21.1 gpm (80 l/min)	

# 38/262 K2 Capacity Chart

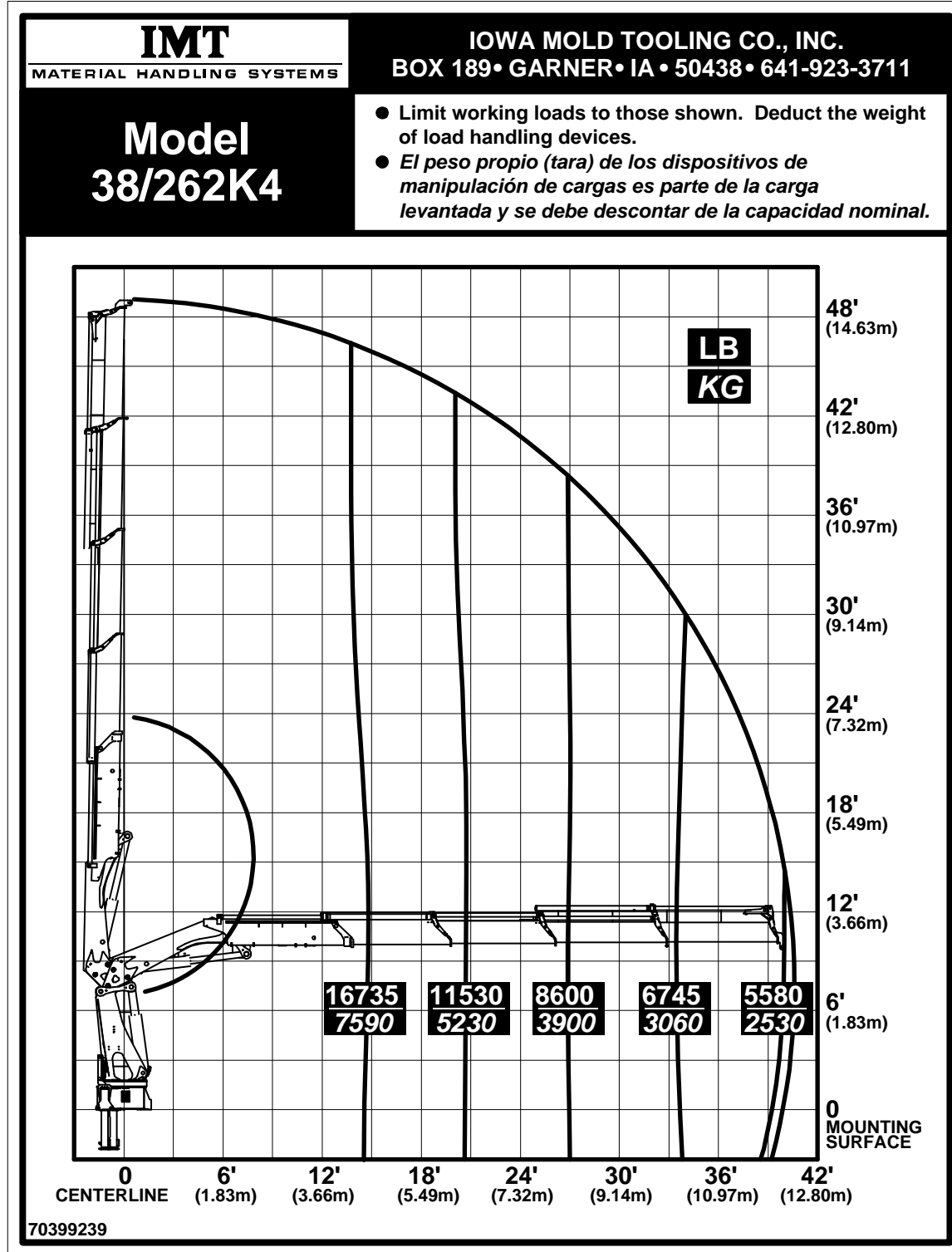




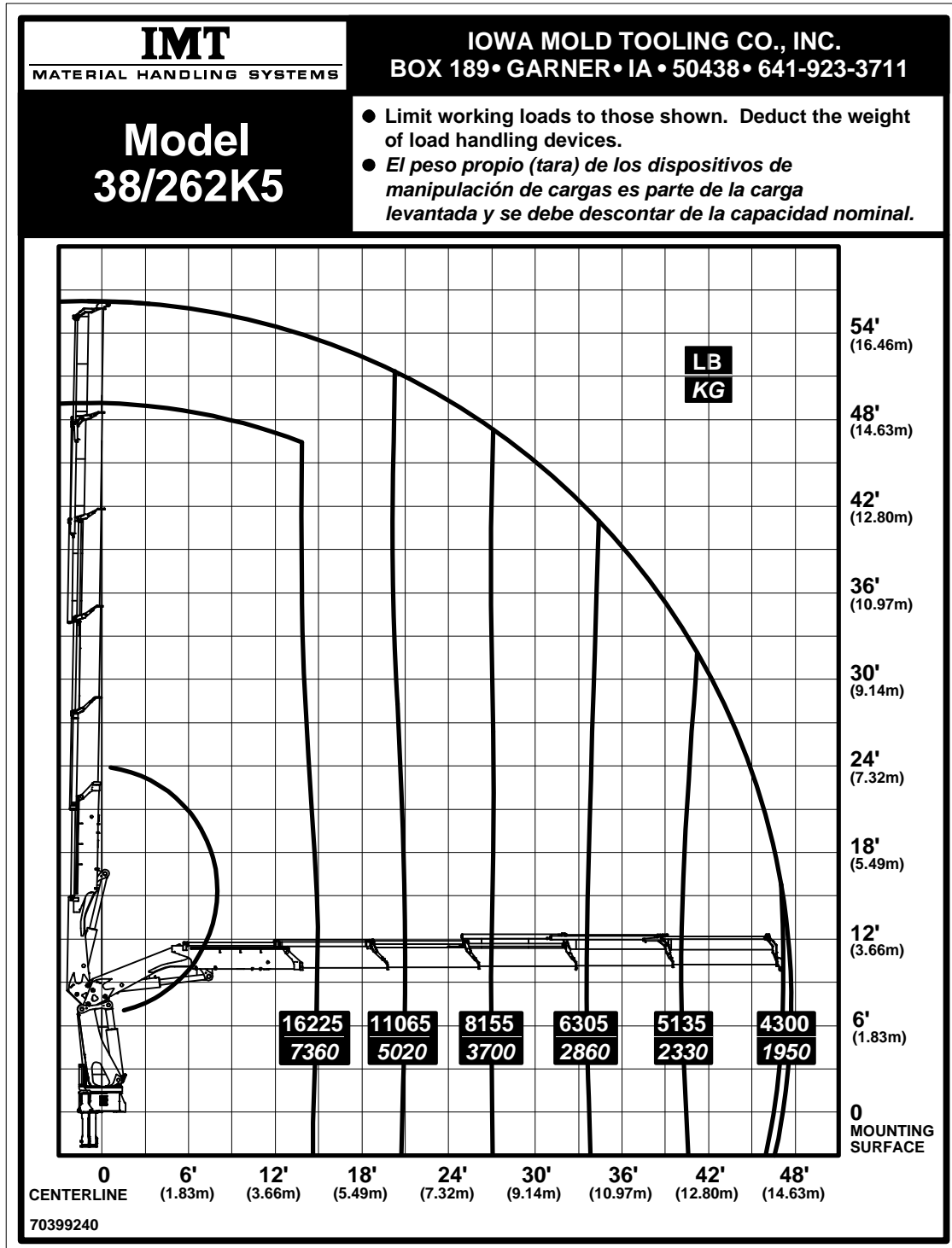
# 38/262 K3 Capacity Chart



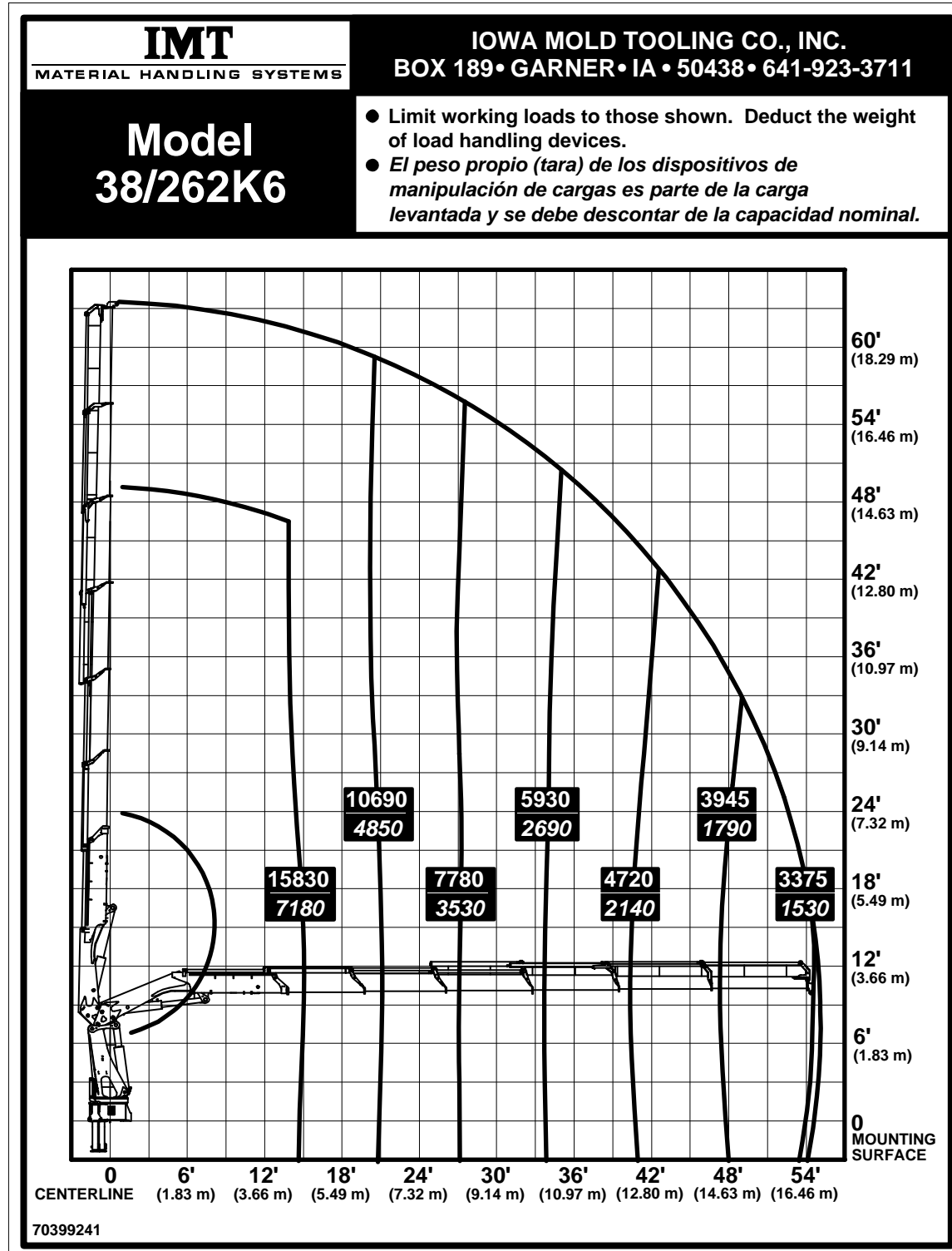
# 38/262 K4 Capacity Chart



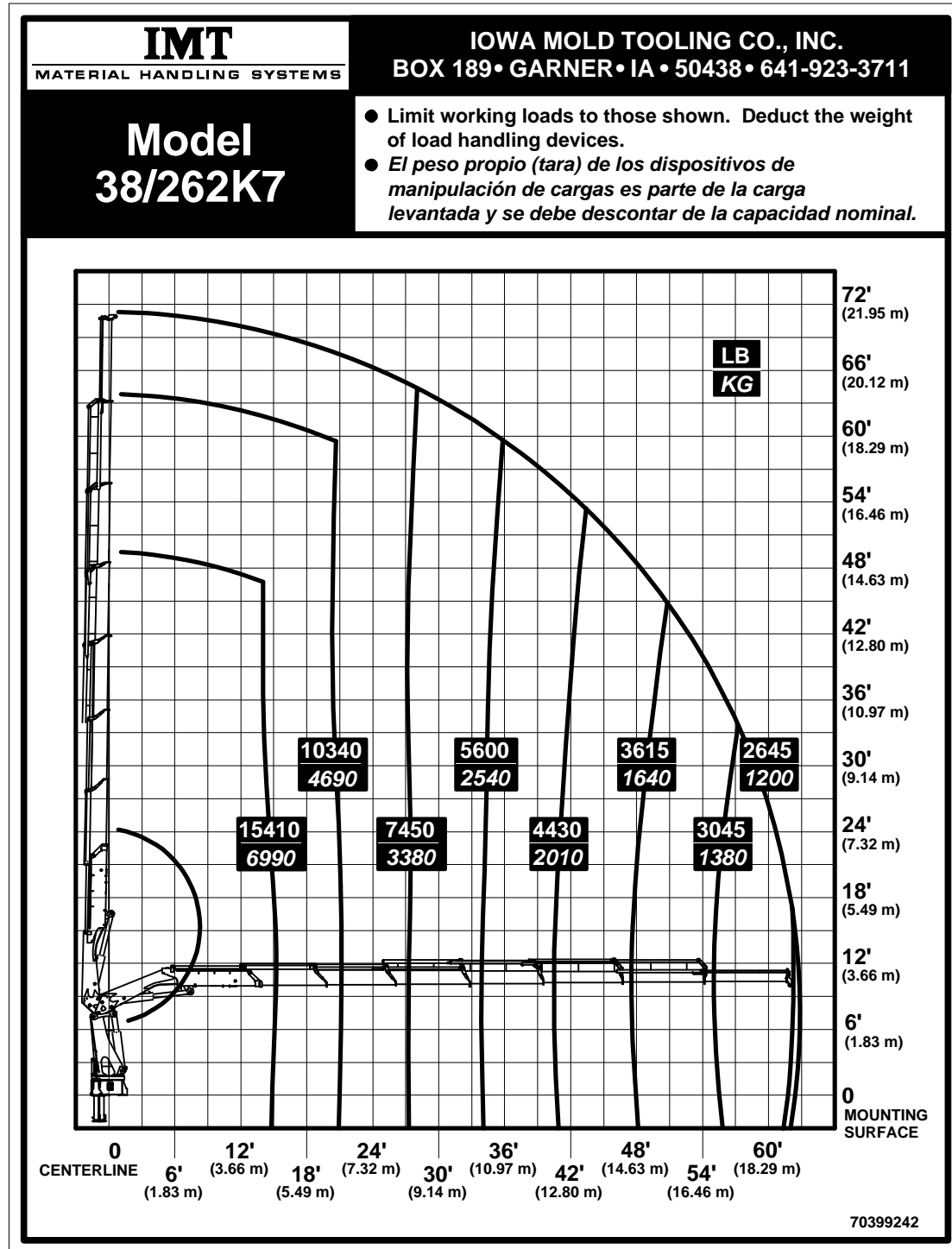
# 38/262 K5 Capacity Chart



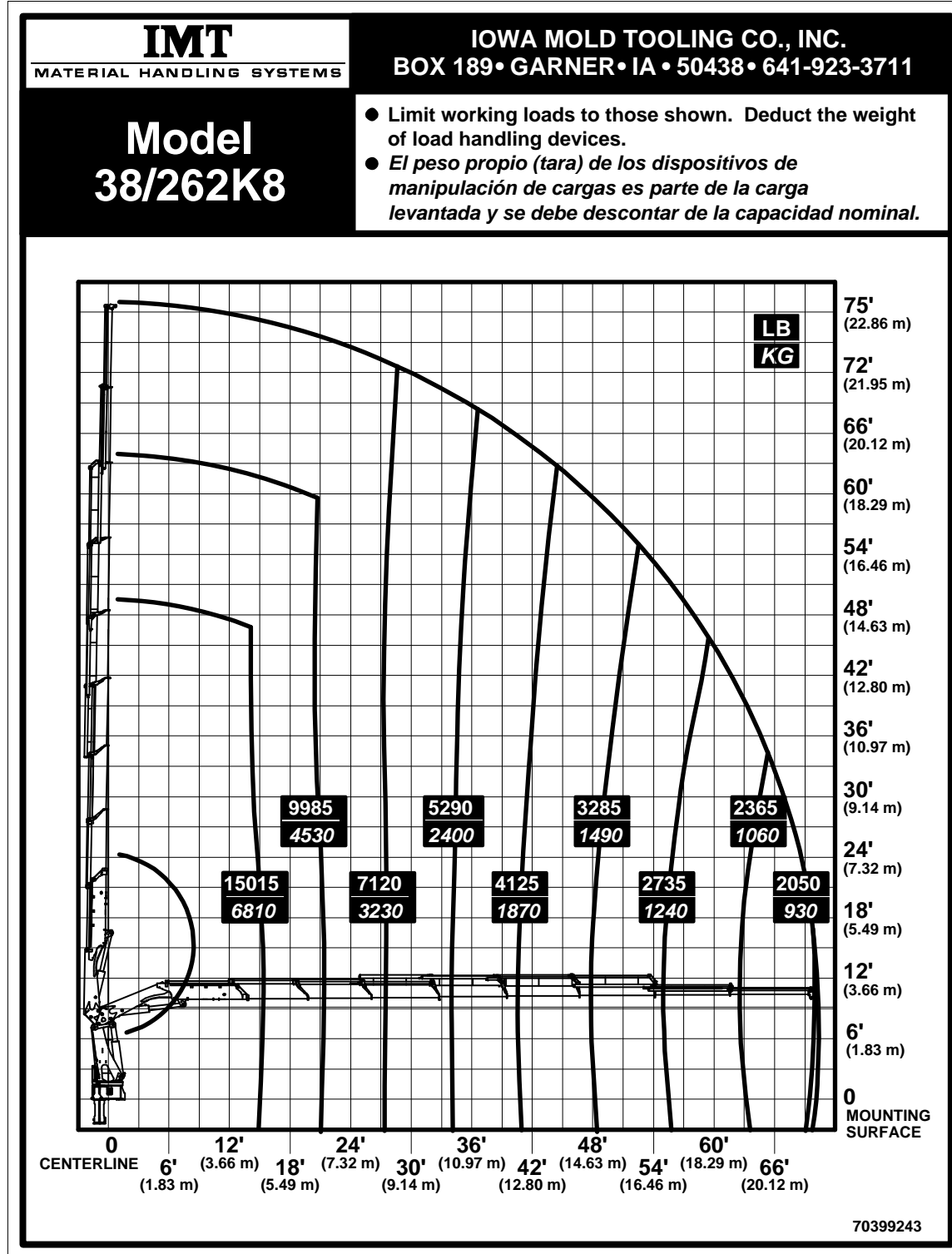
# 38/262 K6 Capacity Chart



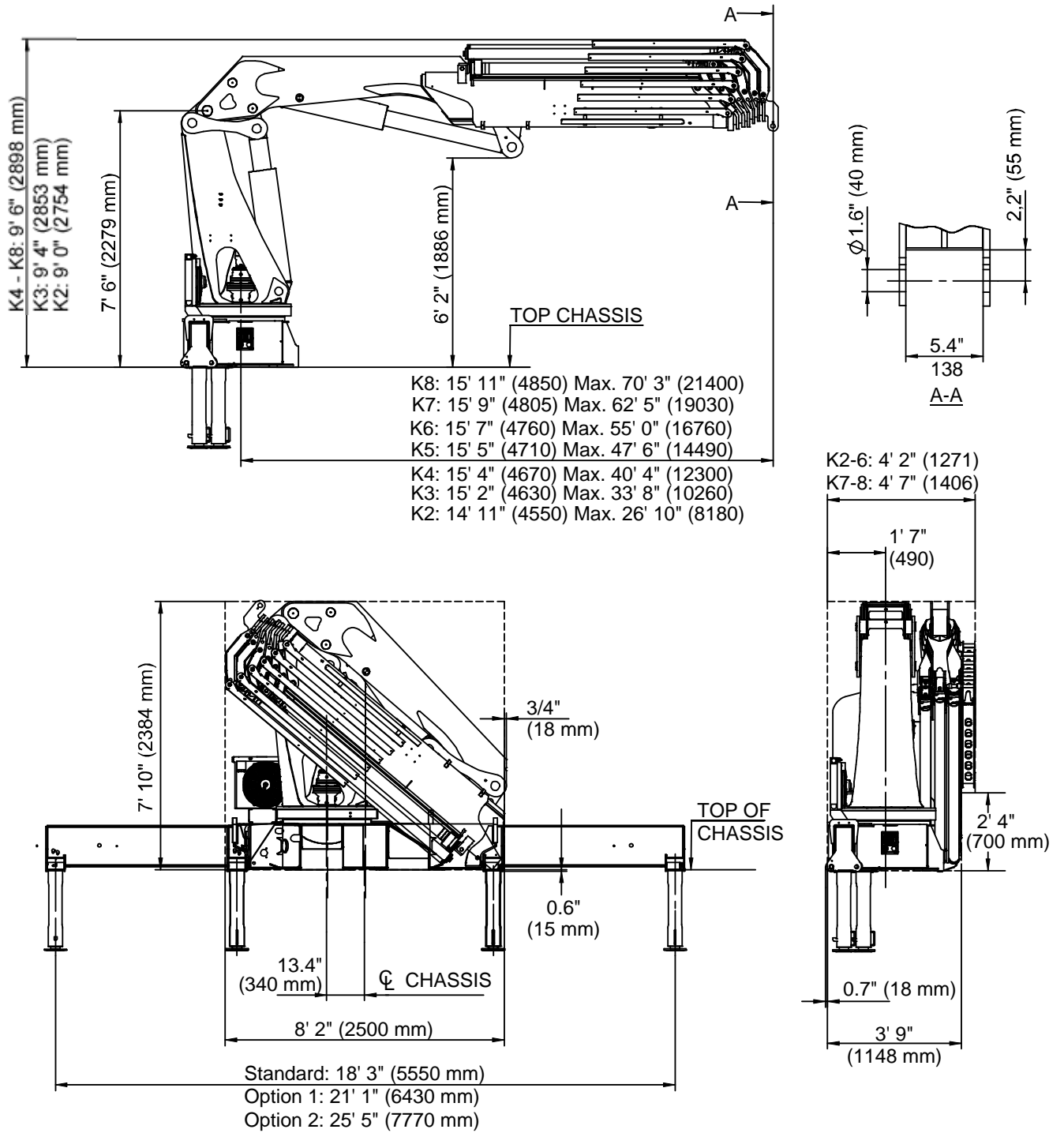
# 38/262 K7 Capacity Chart



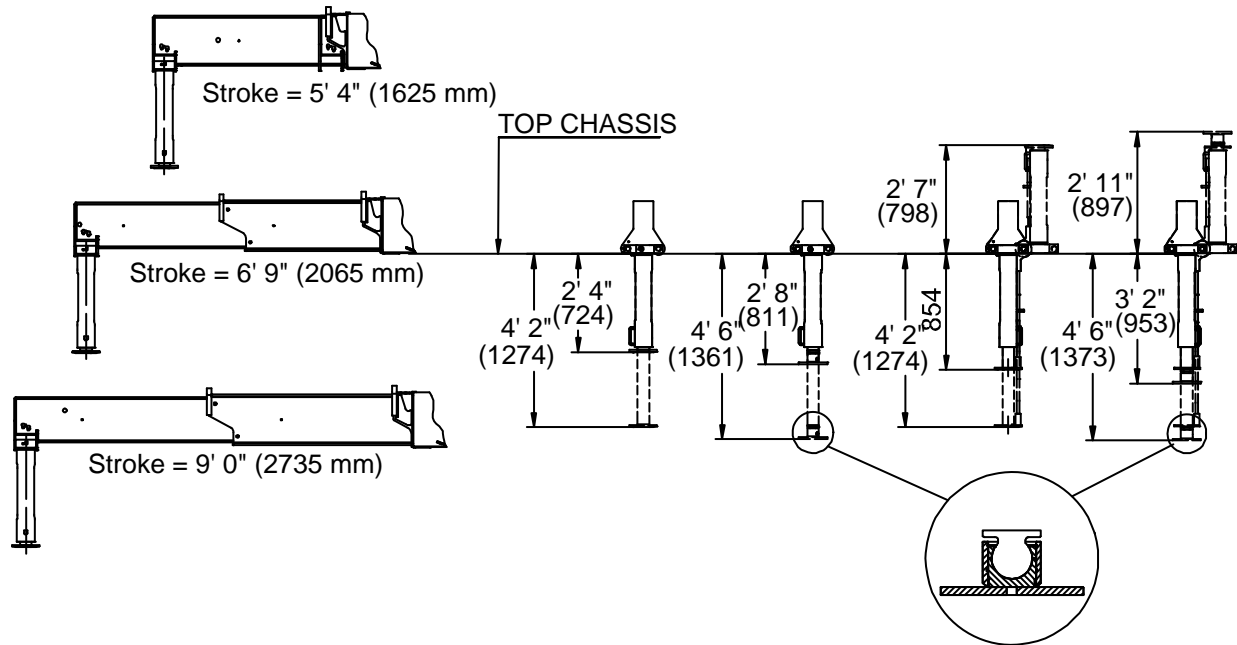
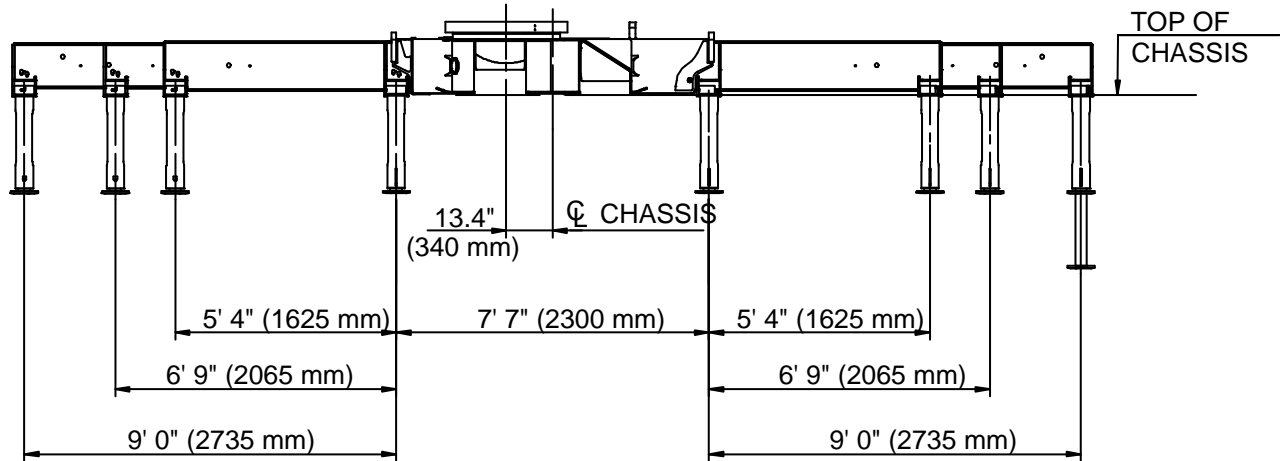
# 38/262 K8 Capacity Chart



# 38/262 Dimensional Drawing

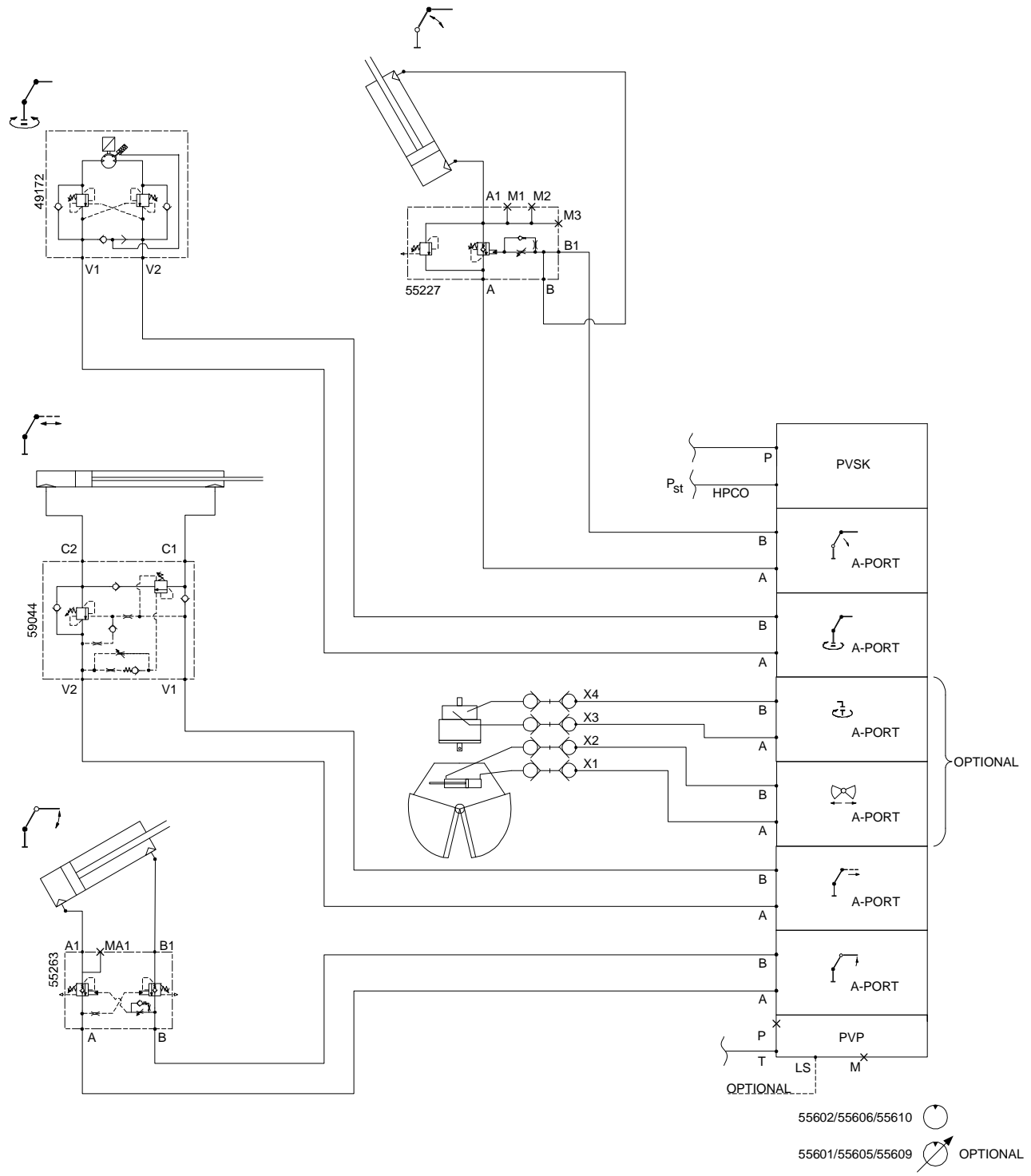


# 38/262 Stabilizer Drawing





# 38/262 Hydraulic Diagram



# 38/262 Swing Radius

