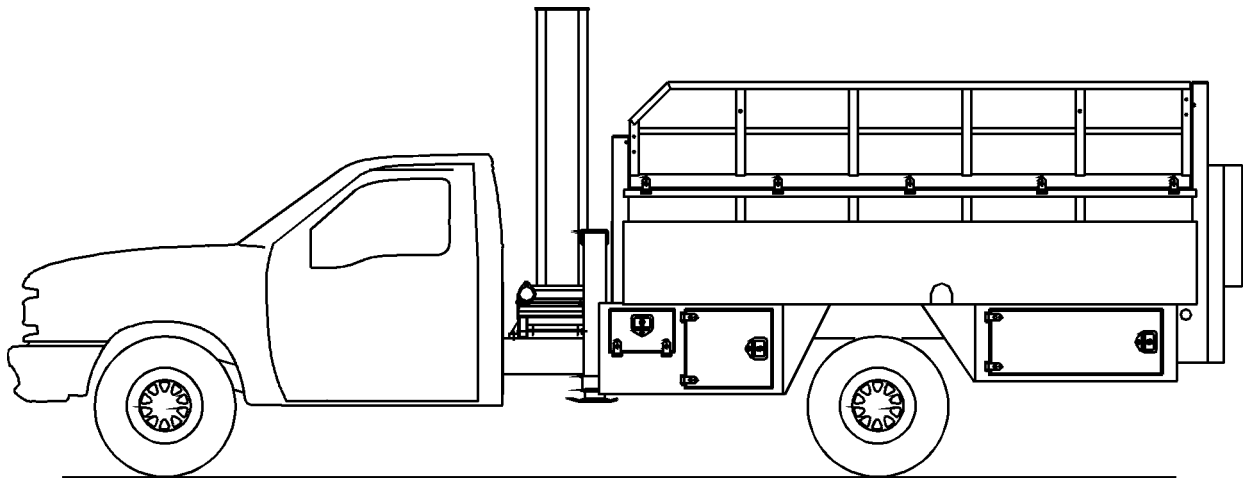




# *1999 Model 3011A TriStar Commercial Fleet Body*

## **PARTS AND SPECIFICATIONS**

Section 1 BODY SPECIFICATIONS  
Section 2 REPLACEMENT PARTS



**IOWA MOLD TOOLING CO., INC.**

BOX 189, GARNER, IA 50438-0189

TEL: 515-923-3711

TECHNICAL SUPPORT FAX: 515-923-2424

MANUAL PART NO: 99900953

## **PARTS ORDERING INFORMATION**

Before placing an order, take the time to record the following information. This information should then be given to an IMT representative when placing your order.

**BODY MODEL NUMBER:**

**BODY SERIAL NUMBER:**

**PART NUMBER, DESCRIPTION AND QUANTITY REQUIRED:**

**If left or right side is applicable, please specify.**

Contact IMT at the following address:

**IOWA MOLD TOOLING CO., INC.  
BOX 189, GARNER, IA 50438-0189  
TEL: 515-923-3711  
PRODUCT SUPPORT FAX: 515-923-2424**

**See Series 60 Compressor Manual  
for complete installation and operation instructions.**

**Read and familiarize yourself with the  
IMT OPERATOR'S CRANE SAFETY MANUAL  
before operating or performing any maintenance  
on your crane.**

## LIMITED WARRANTY

**WARRANTY COVERAGE** - Products manufactured by Iowa Mold Tooling Co., Inc. (IMT) are warranted to be free from defects in material and workmanship, under proper use, application and maintenance in accordance with IMT's written recommendations, instructions and specifications as follows:

1. Ninety (90) days; labor on IMT workmanship from the date of shipment to the end user.
2. One (1) year; original IMT parts from the date of shipment to the end user.

IMT's obligation under this warranty is limited to, and the sole remedy for any such defect shall be the repair or replacement (at IMT's option) of unaltered parts returned to IMT, freight prepaid, and proven to have such defect, provided such defect occurs within the above stated warranty period and is reported within fourteen (14) days of its occurrence.

**IMPLIED WARRANTY EXCLUDED** - This is the only authorized IMT warranty and is in lieu of all other express or implied warranties or representations, including any implied warranties of merchantability or fitness for any particular purpose or of any other obligations on the part of IMT.

**ITEMS EXCLUDED** - The manufacturer gives no warranty on any components purchased by the manufacturer, and such components as are covered only by the warranties of their respective manufacturers.

**WARRANTY CLAIMS** - Warranty claims must be submitted and shall be processed in accordance with IMT's established warranty claim procedure.

**WARRANTY SERVICE** - Warranty service will be performed by any IMT distributor authorized to sell new IMT products of the type involved or by any IMT Service Center authorized to service the type of product involved or by IMT in the event of direct sales made by IMT. At the time of requesting warranty service, the purchaser must present evidence of the date of delivery of the product. The purchaser shall pay any premium for overtime labor requested by the purchaser, any charge for making service calls and for transporting the equipment to the place where warranty work is performed.

**WARRANTY VOIDED** - All obligations of IMT under this warranty shall be terminated: (1) if service other than normal maintenance or normal replacement of service items is performed by someone other than an authorized IMT dealer, (2) if product is modified or altered in ways not approved by IMT.

**PURCHASER'S RESPONSIBILITY** - This warranty covers only defective material and workmanship. It does not cover depreciation or damage caused by normal wear, accident, improper protection in storage, or improper use. The purchaser has the obligation of performing the care and maintenance duties discussed in IMT's written recommendations, instructions and specifications. Any damage which results because of purchaser's failure to perform such duties shall not be covered by this warranty. The cost of normal maintenance and normal replacement of service items such as filters, belts, etc. shall be paid by the purchaser.

**CONSEQUENTIAL DAMAGES** - The only remedies the purchaser has in connection with the breach or performance of any warranty on IMT products are those set forth above. In no event will the dealer, IMT or any company affiliated with IMT, be liable for business interruptions, loss of sales and/or profits, rental or substitute equipment, costs of delay or for any other special, indirect, incidental or consequential losses, costs or damages.

**REPRESENTATIONS EXCLUDED** - IMT products are subject to no expressed, implied or statutory warranty other than herein set forth, and no agent, representative or distributor of the manufacturer has any authority to alter the terms of this warranty in any way whatsoever or to make any representations or promises, express or implied, as to the quality or performance of IMT products other than those set forth above.

**CHANGE IN DESIGN** - IMT reserves the right to make changes in design or improvements upon its products without imposing any obligation upon itself to install the same upon its products theretofore manufactured.

Effective January, 1985

This parts manual is provided to the user to assist in servicing the equipment. It is the property of Iowa Mold Tooling Co., Inc and, as such, may not be reproduced either whole or in part, whether by chemical, electrostatic, mechanical or photographic means without the expressed written permission of an officer of Iowa Mold Tooling Co., Inc. One manual is provided with each piece of new equipment and additional manuals may be obtained at a nominal price.



**IOWA MOLD TOOLING CO., INC.**

BOX 189, GARNER, IA 50438-0189

TEL: 515-923-3711

TECHNICAL SUPPORT FAX: 515-923-2424

The information within this manual has been compiled and checked but errors do occur. To provide our customers with a method of communicating those errors we have provided the Manual Change Request form below. In addition to error reporting, you are encouraged to suggest changes or additions to the manual which would be of benefit to you. We cannot guarantee that these additions will be made but we do promise to consider them. When completing the form, please write or print clearly. Submit a copy of the completed form to the address listed below.

## MANUAL CHANGE REQUEST

DATE	PRODUCT MANUAL	MANUAL PART NO.
SUBMITTED BY		
COMPANY		
ADDRESS		
CITY, STATE, ZIP		
TELEPHONE		

ERROR FOUND

LOCATION OF ERROR (page no.): \_\_\_\_\_

DESCRIPTION OF ERROR: \_\_\_\_\_

---



---



---



---



---



---



---



---

REQUEST FOR ADDITION TO MANUAL

DESCRIPTION OF ADDITION: \_\_\_\_\_

---



---



---

REASON FOR ADDITION: \_\_\_\_\_

---



---

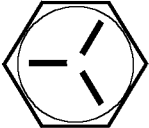



---

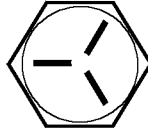

MAIL TO: IOWA MOLD TOOLING Co., Inc.  
Box 189,  
Garner IA 50438-0189  
ATTN: Technical Publications

# TORQUE DATA CHART

## FINE THREAD BOLTS

SIZE (DIA-TPI)	BOLT DIA (INCHES)	TIGHTENING TORQUE			
		 SAE J429 GRADE 5		 SAE J429 GRADE 8	
		PLAIN (FT-LB)	PLATED (FT-LB)	PLAIN (FT-LB)	PLATED (FT-LB)
5/16-24	0.3125	19	14	27	20
3/8-24	0.3750	35	26	49	35
7/16-20	0.4375	55	41	78	58
1/2-20	0.5000	90	64	120	90
9/16-18	0.5625	120	90	170	130
5/8-18	0.6250	170	130	240	180
3/4-16	0.7500	300	225	420	315
7/8-11	0.8750	445	325	670	500
1-12	1.0000	645	485	995	745
1 1/8-12	1.1250	890	670	1445	1085
1 1/4-12	1.2500	1240	930	2010	1510
1-3/8-12	1.3750	1675	1255	2710	2035
1 1/2-12	1.5000	2195	1645	3560	2670

## COARSE THREAD BOLTS

SIZE (DIA-TPI)	BOLT DIA (INCHES)	TIGHTENING TORQUE			
		 SAE J429 GRADE 5		 SAE J429 GRADE 8	
		PLAIN (FT-LB)	PLATED (FT-LB)	PLAIN (FT-LB)	PLATED (FT-LB)
5/16-18	0.3125	17	13	25	18
3/8-16	0.3750	31	23	44	33
7/16-14	0.4375	49	37	70	52
1/2-13	0.5000	75	57	105	80
9/16-12	0.5625	110	82	155	115
5/8-11	0.6250	150	115	220	160
3/4-10	0.7500	265	200	375	280
7/8-9	0.8750	395	295	605	455
1-8	1.0000	590	445	910	680
1 1/8-7	1.1250	795	595	1290	965
1 1/4-7	1.2500	1120	840	1815	1360
1-3/8-6	1.3750	1470	1100	2380	1780
1 1/2-6	1.5000	1950	1460	3160	2370

When using the torque data in the charts above, the following rules should be observed.

1. Bolt manufacturer's particular specifications should be consulted when provided.
2. Flat washers of equal strength must be used.
3. All torque measurements are given in foot-pounds. To convert to inch-pounds, multiply by 12.
4. Torque values specified are for bolts with residual oils or no special lubricants applied. If special lubricants of high stress ability, such as Never-Seez compound graphite and oil, molybdenum disulphite, colloidal copper or white lead are applied, multiply the torque values in the charts by the factor .90. The use of Loctite does not affect the torque values listed above.
5. Torque values for socket-head capscrews are the same as for Grade 8 capscrews.

### WARNING

Anytime a gear-bearing bolt is removed, it must be replaced with a new bolt of the identical grade and size. Once a bolt has been torqued to 75% of its proof load and then removed, the torque coefficient may no longer be the same as when the bolt was new thus giving indeterminate clamp loads after torquing. Failure to replace gear-bearing bolts may result in bolt failure due to metal fatigue causing serious injury or DEATH.

# IMT Value Plus PM Package Service Schedule

MODEL 3011 TriStar

PM KIT REQUIRED: VP6160D

TYPE OF SERVICE	MONTH											
	1	2	3	4	5	6	7	8	9	10	11	12
Change DAR60P rotary screw compressor oil filter						✗						✗
Change rotary compressor oil						✗						✗
Change compressor coalescer filter												✗
Change rotary compressor air filter		✗		✗		✗		✗		✗		✗
Grease rotary compressor driveline	✗	✗	✗	✗	✗	✗	✗	✗	✗	✗	✗	✗
Change moisture separator filter						✗						✗
Drain moisture from compressor oil tank sump	✗	✗	✗	✗	✗	✗	✗	✗	✗	✗	✗	✗
Change 3000 crane suction filter						✗						✗
Change 3000 crane return filter						✗						✗
Change 3000 crane hydraulic oil						✗						✗
Change liftgate hydraulic oil												✗
Start new 12 month PM chart												✗

0003011A:99900953: 19990115

VI

**Daily checks** include compressor fluid levels, compressor air intake indicator, crane fluid levels, and draining of moisture separator.

**Weekly checks** include greasing of crane turntable, pin bosses, and compressor driveline.

**Kit Includes:** DAR60P5 Rotary Screw Air Compressor filter (1), oil filter (2), compressor oil (2 changes), air filters (6), and moisture separator filter (2), 3000 crane suction filters (2), return filters (2).

*Recommended for average equipment usage rate. Required crane and liftgate lubricants not included.*

# SECTION 1. SPECIFICATIONS

<b>GENERAL SPECIFICATIONS .....</b>	<b>3</b>
<b>COMPARTMENT SPECIFICATIONS .....</b>	<b>3</b>
<b>STANDARD FEATURES .....</b>	<b>4</b>
<b>OPTIONAL EQUIPMENT .....</b>	<b>4</b>
<b>DIMENSIONAL DRAWING .....</b>	<b>4</b>
<b>WEIGHT DISTRIBUTION-F450 .....</b>	<b>5</b>
<b>WEIGHT DISTRIBUTION-F550 .....</b>	<b>6</b>





# 1999 Model 3011A TriStar Commercial Fleet Body

## GENERAL SPECIFICATIONS

	STANDARD	Model 445
CRANES FOR WHICH BODY IS DESIGNED	IMT 3000 Series	Model 445
CHASSIS CAB-TO-AXLE (CA)	84"	213.4 cm
CHASSIS GVWR	15,000 lbs	6805 kgs
BODY CUBIC CAPACITY	317 cubic feet	8.98 cubic meters
TIRE HAULING CAPACITY	Twenty-four 11R24.5 Two 33.25-29	Twenty-four 11R24.5 Two 33.25-29
AVAILABLE PAYLOAD	4340 lbs	1969 kgs
LIFTGATE CAPACITY	1600 lbs	725 kgs

## COMPARTMENT SPECIFICATIONS

LEFT FRONT COMPARTMENT	20"H X 41"W X 20"D 9.49 cubic feet	50.8x104.1x50.8cm .27 cubic meters
RIGHT FRONT COMPARTMENT	20"H X 41"W X 20"D 9.49 cubic feet	50.8x104.1x50.8cm .27 cubic meters
LEFT LOWER COMPARTMENT	17"H X 45"W X 20"D 8.85 cubic feet	43.2x114.3x50.8cm .25 cubic meters
RIGHT LOWER COMPARTMENT	17"H X 45"W X 20"D 8.85 cubic feet	43.2x114.3x50.8cm .25 cubic meters

Note: Dimensions of compartments are nominal.



**IOWA MOLD TOOLING CO., INC.**

BOX 189, GARNER, IA 50438-0189

TEL: 515-923-3711

TECHNICAL SUPPORT FAX: 515-923-2424

## STANDARD FEATURES

- 1/2" x 50' hose reel.
- 1/2" moisture separator/regulator/oiler
- Amber beacon light.
- Two body mounted 12V floodlights.
- Two crane mounted 12V floodlights.
- Four compartment lights.
- An ICC safety kit.
- Hour meter.
- Back up alarm.
- Liftgate side rail and tire stop.

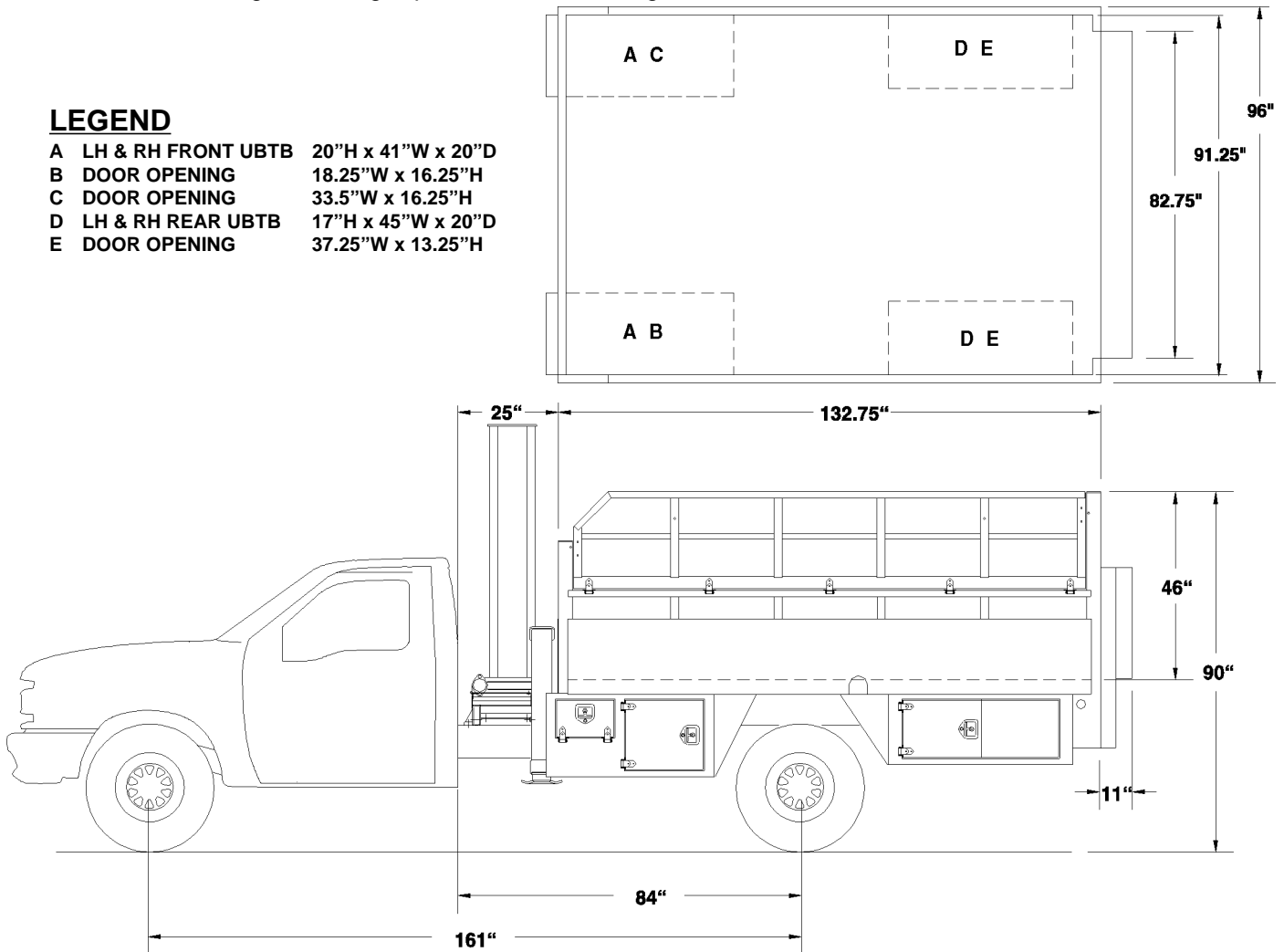
## OPTIONAL EQUIPMENT

- Cab caddy.
- 3/8" x 35' hose reel.
- Tubeless truck inflator hookup.
- Dual 1/2" airline coupler plumbing.
- 15 gallon, galvanized pressurized water tank.
- 300-gallon portable calcium chloride skid.
- Two-bar fold-up tire inflation cage with body installed carrying bracket and 6' inflation hose.
- Customer identification.

IMT reserves the right to change specifications and design without notice.

### LEGEND

<b>A</b>	LH & RH FRONT UBTB	20"H x 41"W x 20"D
<b>B</b>	DOOR OPENING	18.25"W x 16.25"H
<b>C</b>	DOOR OPENING	33.5"W x 16.25"H
<b>D</b>	LH & RH REAR UBTB	17"H x 45"W x 20"D
<b>E</b>	DOOR OPENING	37.25"W x 13.25"H



# WEIGHT DISTRIBUTION

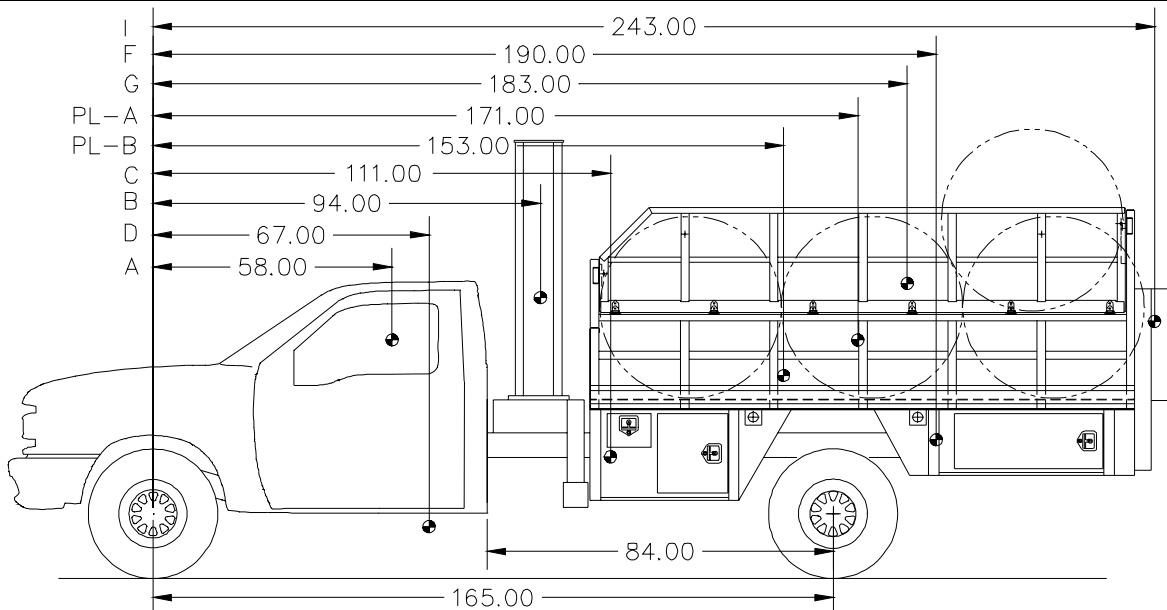
## 3011A TriStar

### Commercial Fleet Series

### F450

CHASSIS MODEL	F450
CHASSIS MODEL YEAR	1999
CHASSIS MANUFACTURER	FORD
WHEELBASE	165"
CAB-TO-AXLE	84"
GVWR (LBS)	15000
FRONT AXLE RATING (LBS)	5790
REAR AXLE RATING (LBS)	10880

LOCATION	COMPONENT DESCRIPTION	TOTAL WEIGHT (LBS)	WEIGHT FRONT AXLE (LBS)	WEIGHT REAR AXLE (LBS)
	CHASSIS WEIGHT - STD EQUIP/OIL/WATER	6650	4010	2640
G	3011A TRISTAR BODY	1074	-117	1191
B	3000 SERIES CRANE	2020	869	1151
I	LOADGATE	690	-326	1016
D	DAR60P COMP+PTO	247	147	100
C	0.5"X50' HOSEREEL	55	18	37
	ASSEMBLY HARDWARE	104	12	92
	<b>SUBTOTAL</b>	<b>10840</b>	<b>4613</b>	<b>6227</b>
	TOTAL REMAINING GVW	4160	1177	4653
PL-A	CARGO PAYLOAD AT SPECIFIED LOCATION	3398	-127	3525
PL-B	CUSTOMER SUPPLIED TOOLS	260	19	241
F	REAR FUEL TANK - 36 GALLONS	252	-38	290
A	DRIVER	250	162	88
	REMAINING PAYLOAD	0	3	-3
	<b>TOTAL UNIT WEIGHT - WITH SPECIFIED LOAD</b>	<b>15000</b>	<b>4632</b>	<b>10368</b>



# WEIGHT DISTRIBUTION

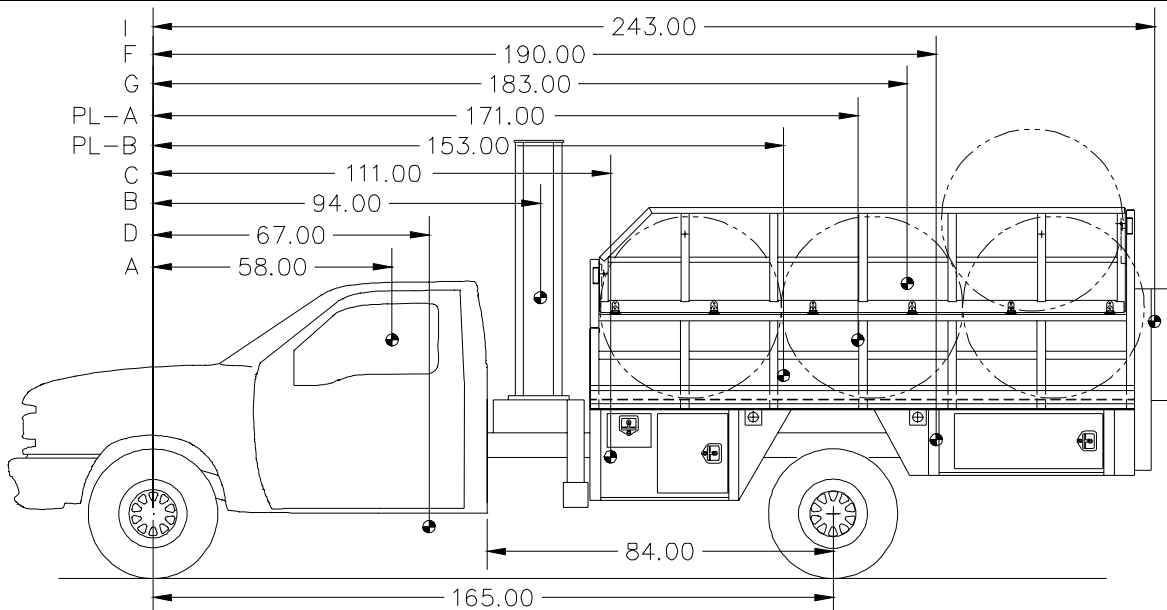
## 3011A TriStar

### Commercial Fleet Series

### F550

CHASSIS MODEL	F550
CHASSIS MODEL YEAR	1999
CHASSIS MANUFACTURER	FORD
WHEELBASE	165"
CAB-TO-AXLE	84"
GVWR (LBS)	17500
FRONT AXLE RATING (LBS)	6000
REAR AXLE RATING (LBS)	12460

LOCATION	COMPONENT DESCRIPTION	TOTAL WEIGHT (LBS)	WEIGHT FRONT AXLE (LBS)	WEIGHT REAR AXLE (LBS)
	CHASSIS WEIGHT - STD EQUIP/OIL/WATER	6650	4020	2730
G	3011A TRISTAR BODY	1074	-117	1191
B	3000 SERIES CRANE	2020	869	1151
I	LOADGATE	690	-326	1016
D	DAR60P COMP+PTO	247	147	100
C	0.5"X50' HOSEREEL	55	18	37
	ASSEMBLY HARDWARE	104	12	92
	<b>SUBTOTAL</b>	<b>10840</b>	<b>4623</b>	<b>6317</b>
	TOTAL REMAINING GVW	6660	1377	6143
PL-A	CARGO PAYLOAD AT SPECIFIED LOCATION	3398	-127	3525
PL-B	CUSTOMER SUPPLIED TOOLS	260	19	241
F	REAR FUEL TANK - 36 GALLONS	252	-38	290
A	DRIVER	250	162	88
	REMAINING PAYLOAD	2500	861	1539
	<b>TOTAL UNIT WEIGHT - WITH SPECIFIED LOAD</b>	<b>17500</b>	<b>5500</b>	<b>12000</b>



## SECTION 2. REPLACEMENT PARTS

BODY W/SERIES 60 COMPRESSOR (41714866-1) .....	3
BODY W/SERIES 60 COMPRESSOR (41714866-2) .....	4
BODY W/ SERIES 60 COMPRESSOR (41714866-3) .....	5
BODY W/SERIES 60 COMPRESSOR (41714866-4) .....	6
DOOR & HINGE COMPONENTS (REF: 52714864) .....	7
CHASSIS PREP-BODY W/ SERIES 60 COMPRESSOR-'99 FORD CHASSIS (41714828-1) .....	8
CHASSIS PREP-BODY W/ SERIES 60 COMPRESSOR-'99 FORD CHASSIS (41714828-2) .....	9
INSTALLATION-BODY W/CRANE & SERIES 60 COMPRESSOR-'99 FORD CHASSIS (41714827-1) ...	10
INSTALLATION-BODY W/CRANE & SERIES 60 COMPRESSOR-'99 FORD CHASSIS (41714827-2) ....	11
INSTALLATION-BODY W/CRANE & SERIES 60 COMPRESSOR-'99 FORD CHASSIS (41714827-3) ...	12
DRIVESHAFT ASM (70008W) .....	13
ELECTRICAL INSTALLATION-BODY W/SERIES 60 COMPRESSOR (41714826-1) .....	14
ELECTRICAL INSTALLATION-BODY W/SERIES 60 COMPRESSOR (41714826-2) .....	15
ELECTRICAL INSTALLATION-BODY W/SERIES 60 COMPRESSOR (41714826-3) .....	16
ELECTRICAL INSTALLATION-BODY W/SERIES 60 COMPRESSOR (41714826-4) .....	17
ELECTRICAL INSTALLATION-BODY W/SERIES 60 COMPRESSOR (41714826-5) .....	18
CONTROL BOX (51713793) .....	19
DECAL KIT-3011 BODY W/3000 SERIES CRANE (95713665) .....	20
INSTALLATION KIT-3011 1999 FORD 84"CA (93714831) .....	21

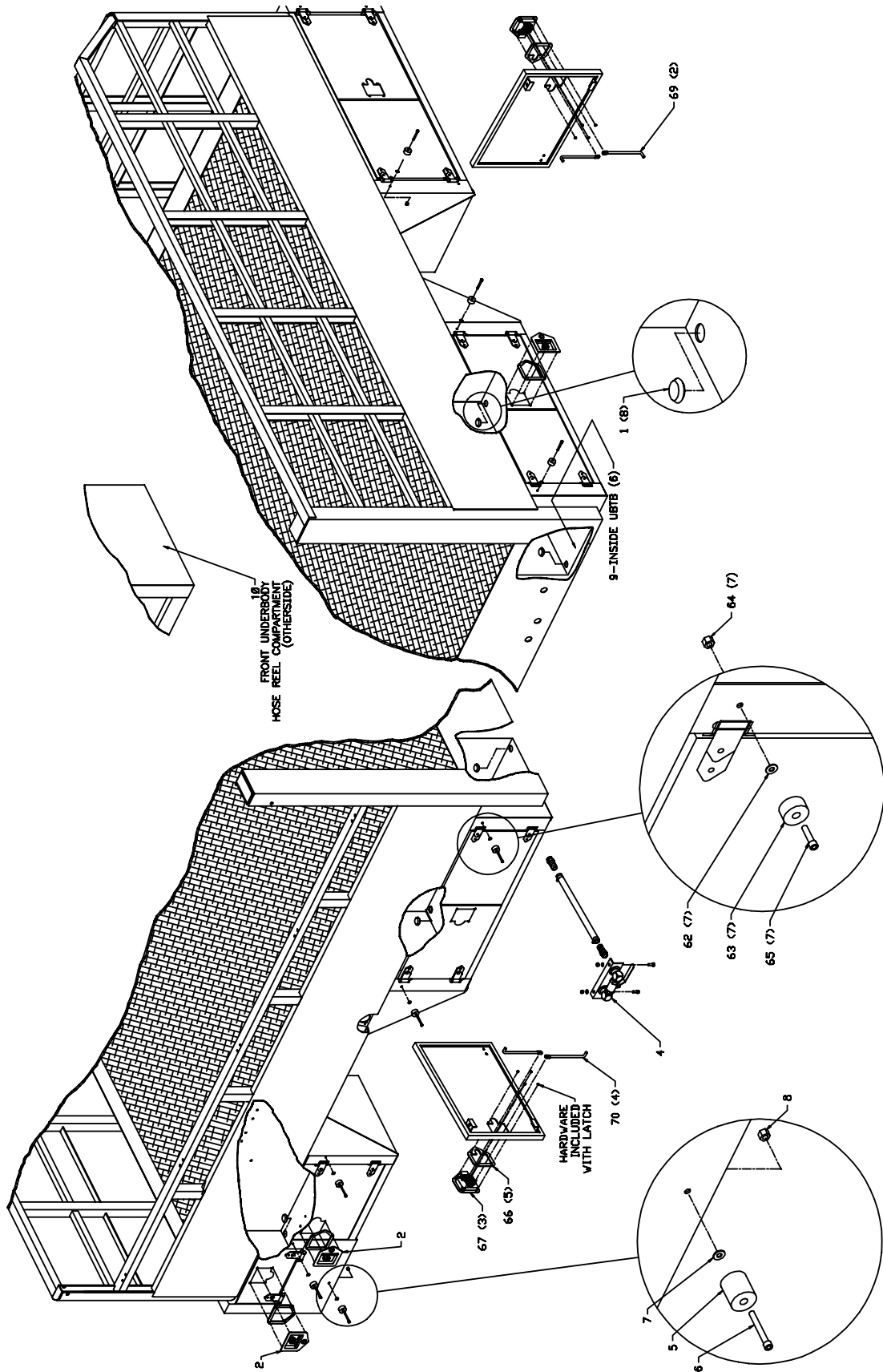


**BODY W/SERIES 60 COMPRESSOR  
(41714866-1)**

ITEM	PART NO.	DESCRIPTION	QTY
1.	70034366	PLUG	8
2.	72661470	LATCH-SGL PT W/STUDS	2
3.	72531132	STREET ELBOW 3/8 90° STL	1
4.	51709358	DRAIN ASM	1
5.	70391615	RUBBER BUMPER	3
6.	72060711	CAP SCR 1/4-20X2 SH	3
7.	72063000	WASHER .19 WRT	3
8.	72062104	NUT 1/4-20 LOCK	30
9.	70393719	PLUG	6
10.	89039999	TREAD 12"	3.9FT
11.	60350057	GUARD-RUBBER 8X26	1
12.	72060004	CAP SCR 1/4-20X1 HHGR5	13
13.	72063001	WASHER 1/4 WRT	29
14.	72063078	WASHER 5/16X1-1/2 OD	5
15.	72661383	HINGE	5
16.	72601652	CAP SCR 1/4-20X3/4 HHGR5	20
17.	72063183	WASHER 1/4 WRT SS	20
18.	72062194	NUT 1/4-20 LOCK SS	20
19.	52710891	SIDE RACK-LH (PART OF 20)	REF
20.	52714864	BODY-W/COMPRESSOR	1
21.	72060098	CAP SCR 1/2-13X3-1/2 HH	1
22.	72066368	LATCH-END GATE LH	1
23.	72066369	LATCH-END GATE RH	1
24.	60250213	STOP-SIDE RACK	2
25.	72060047	CAP SCR 3/8-16X1-1/4 HH	4
26.	72063002	WASHER 5/16 WRT	12
27.	72062103	NUT 3/8-16 LOCK	4
28.	72063005	WASHER 1/2 WRT	8
29.	72062080	NUT 1/2-13 LOCK	6
30.	72060095	CAP SCR 1/2-13X2 HH	1
31.	60112906	BRACKET-CROSS CHAIN	4
32.	52708778	CHAIN 87LINK	2
33.	52708779	CHAIN/BINDER	2
34.	72060033	CAP SCR 5/16-18X3 HHGR5	4
35.	72062109	NUT 5/16-18 LOCK	8
36.	89393607	WEATHERSTRIP 5/8X1/2	44FT
37.	72053451	BARB NIPPLE 1/2MPT 1/2	1
38.	72060002	CAP SCR 1/4-20X3/4 HHGR5	8
39.	70732095	HOSE REEL 1/2	1
40.	60025480	DIVIDER-HOSE REEL	1
41.	70073439	MOISTURE SEP-REG-OILER	1
42.	70048015	AIR PRESSURE GAUGE 300PSI	2
43.	70141473	MTG BRACKET	2
44.	72533022	PIPE NIPPLE 1/2 X CLOSE	2
45.	72531131	STREET ELBOW 1/4NPT 90°	1
46.	72531812	REDUCER BUSHING 1/2-1/4NPT	2
47.	72053612	TEE 1/2NPT	2
48.	72066000	HOSE CLAMP SAE#12	4
49.	72531547	BARB NIPPLE 1/2MPT	4
50.	72531133	STREET ELBOW 1/2NPT 90°	4
51.	72532733	PIPE NIPPLE	1
52.	72532021	QUICK DISCONNECT	1
53.	89392349	HOSE 3/4 X 300#	45"
54.	72533140	COUPLING-BULKHD 1/2X1-1/2	1
55.	72053404	PLUG 1/2NPT	1
56.	70029119	SERIAL NO. PLACARD	1
57.	72066340	POP RIVET 1/8X3/8GRIP	2
58.	72532794	BARB NIPPLE 3/8MPT 3/4HOSE	1
59.	72532022	QUICK DISCONNECT 1/2FPT	1
60.	72060005	CAP SCR 1/4-20X1-1/4 HHGR5	6
61.	76393799	MUD FLAP	2
62.	72063181	WASHER #10 WRT SS	7
63.	76039990	RUBBER BUMPER	7
64.	72062123	NUT #10-24 LOCK SS	7
65.	72601552	CAP SCR #10-24X1 TRH PHH SS	7
66.	76393253	GASKET-LATCH	5
67.	72661466	LATCH-2PT W/STUDS	3
69.	60117857	DOOR ROD 8.5"	2
70.	60117699	DOOR ROD 7"	4
71.	52706335	SIDE RAIL	1
72.	52706337	TIRE STOP	1
73.	60250360	PANEL	1
74.	70733154	LOADGATE	1
75.	72060034	CAP SCR 5/16-18X3-1/4 HHGR5	4
76.	72060093	CAP SCR 1/2-13X1-1/2 HHGR5	6
77.	72063003	WASHER 3/8 WRT	4
78.	72063053	WASHER 1/2 LOCK	2
79.	72661471	WASHER 1/4 X 1 OD FENDER	6
80.	70073625	HOSE REEL 3/8X35'	1
81.	72053590	STREET ELBOW 3/8NPT 90°	1
82.	72066061	HOSE CLAMP SAE#6	2
83.	72031543	BARB NIPPLE 3/8MPT 1/2	1
84.	89039176	AIR HOSE 1/2 250PSI	3FT
85.	60030309	WEAR PAD	2
86.	72060025	CAP SCR 5/16-18X1 HHGR5	6
87.	72063002	WASHER 5/16 WRT	6
88.	72062109	NUT 5/16-18 LOCK	6

**BODY W/SERIES 60 COMPRESSOR  
(41714866-2)**

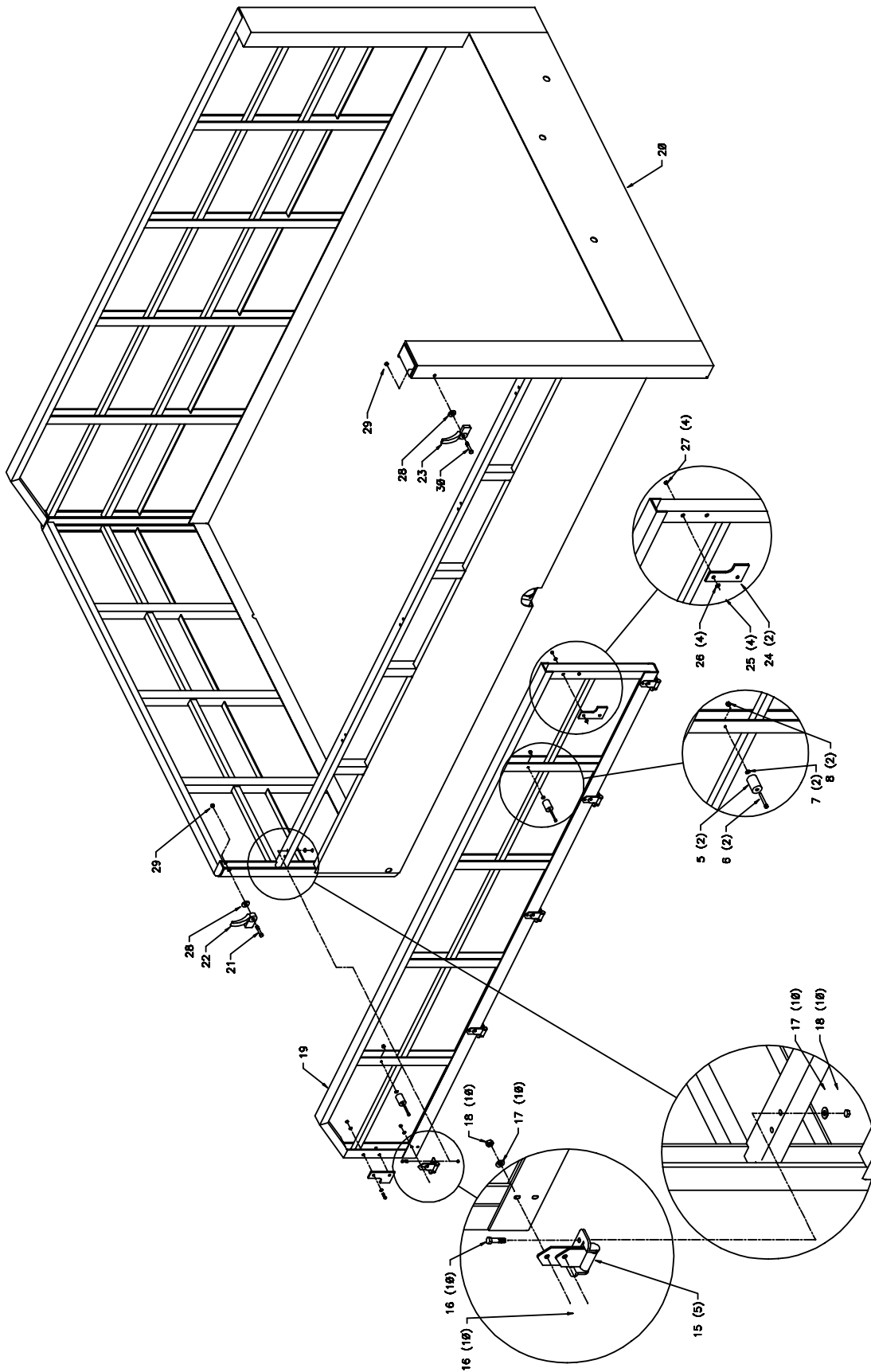
CONTINUED ON FOLLOWING PAGE





**BODY W/ SERIES 60 COMPRESSOR**  
**(41714866-3)**

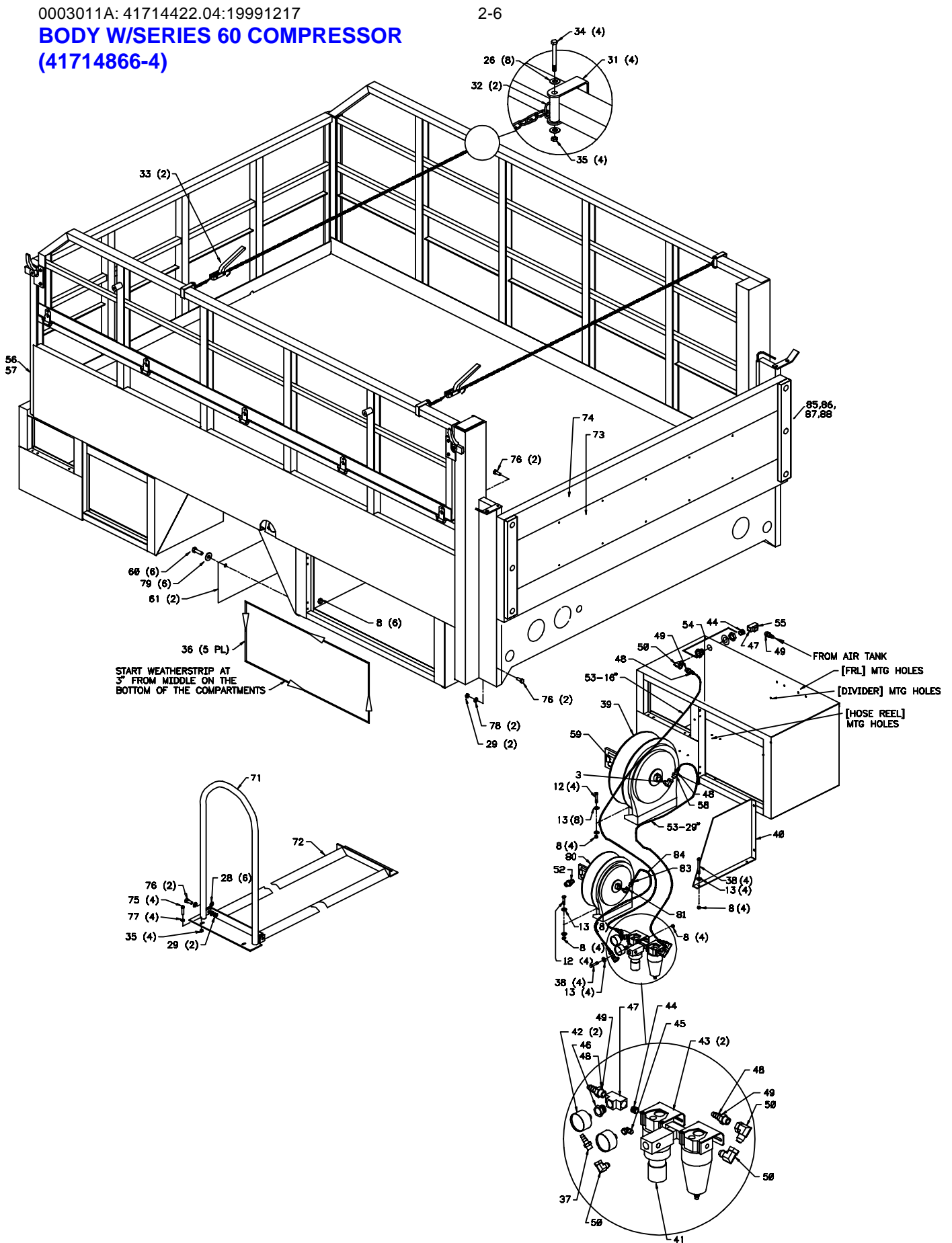
CONTINUED ON FOLLOWING PAGE



0003011A: 41714422.04:19991217

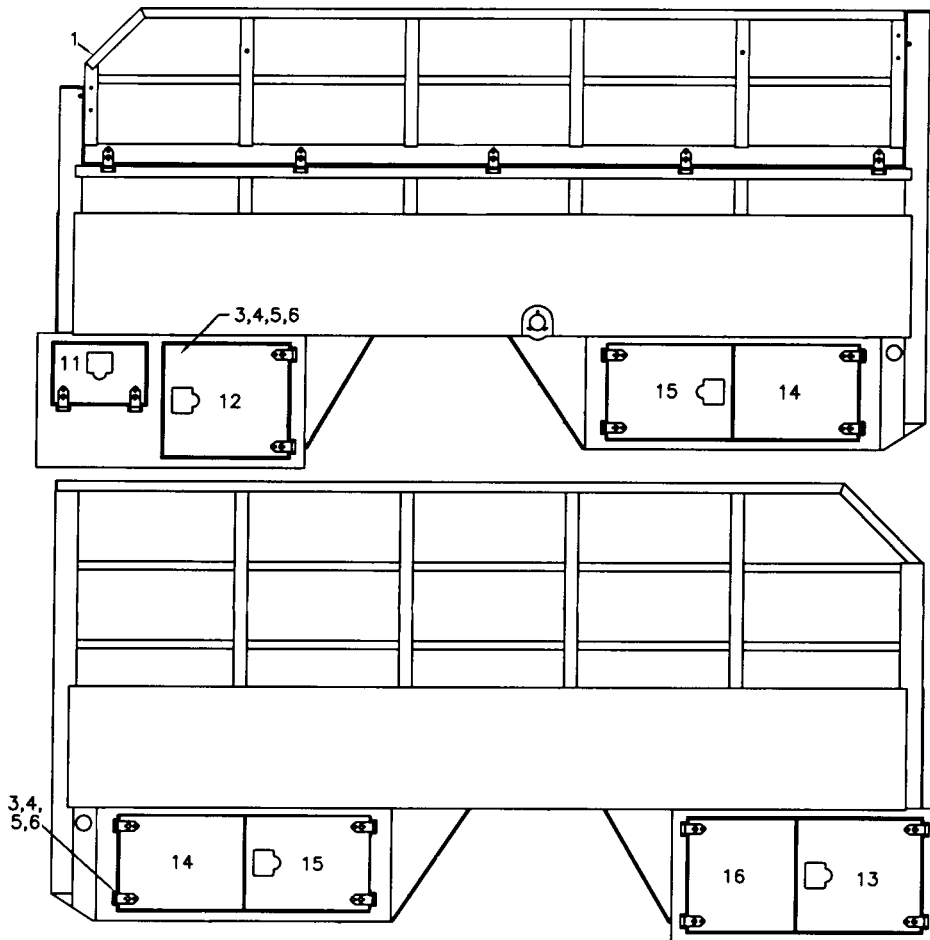
# BODY W/SERIES 60 COMPRESSOR (41714866-4)

2-6



**DOOR & HINGE COMPONENTS (REF: 52714864)**

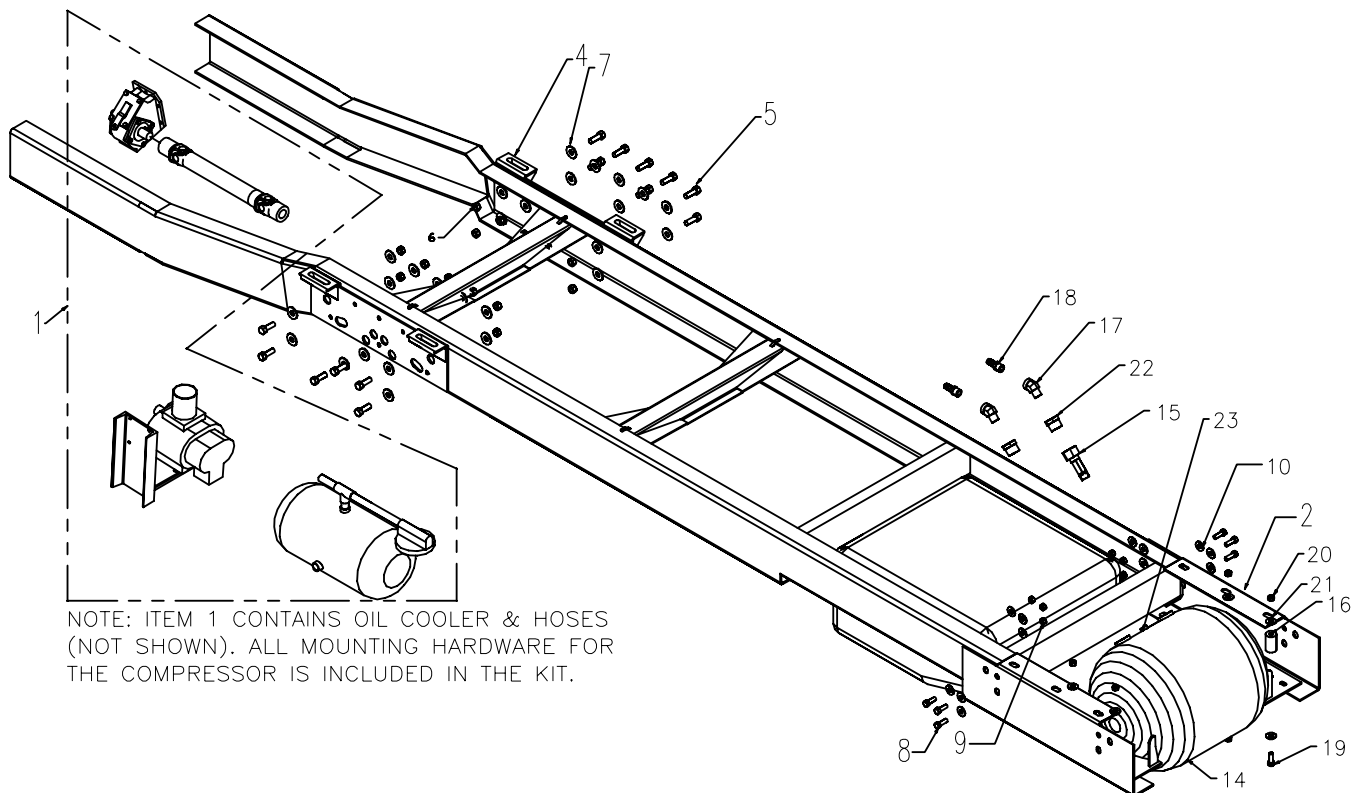
ITEM	PART NO.	DESCRIPTION	QTY
1.	52710891	SIDE RACK-LH	REF
3.	72661383	HINGE 10GA BUTT SS	16
4.	72601652	MACH SCR 1/4-20X3/4 TORX	64
5.	72062194	NUT 1/4-20 LOCK SS	64
6.	72063166	WASHER 1/4 WRT X 5/8 SS	64
11.	52714064	DOOR 14HX8W	1
12.	52713875	DOOR 17HX19W	1
13.	52712127	DOOR 17HX19W	1
14.	52713655	DOOR-DBL 14HX18-7/8W	2
15.	52713654	DOOR 14HX18-7/8W	2
16.	52712126	DOOR 17HX14-5/8W	1



**CHASSIS PREP-BODY W/ SERIES 60  
COMPRESSOR-'99 FORD CHASSIS  
(41714828-1)**

CONTINUED ON FOLLOWING PAGE

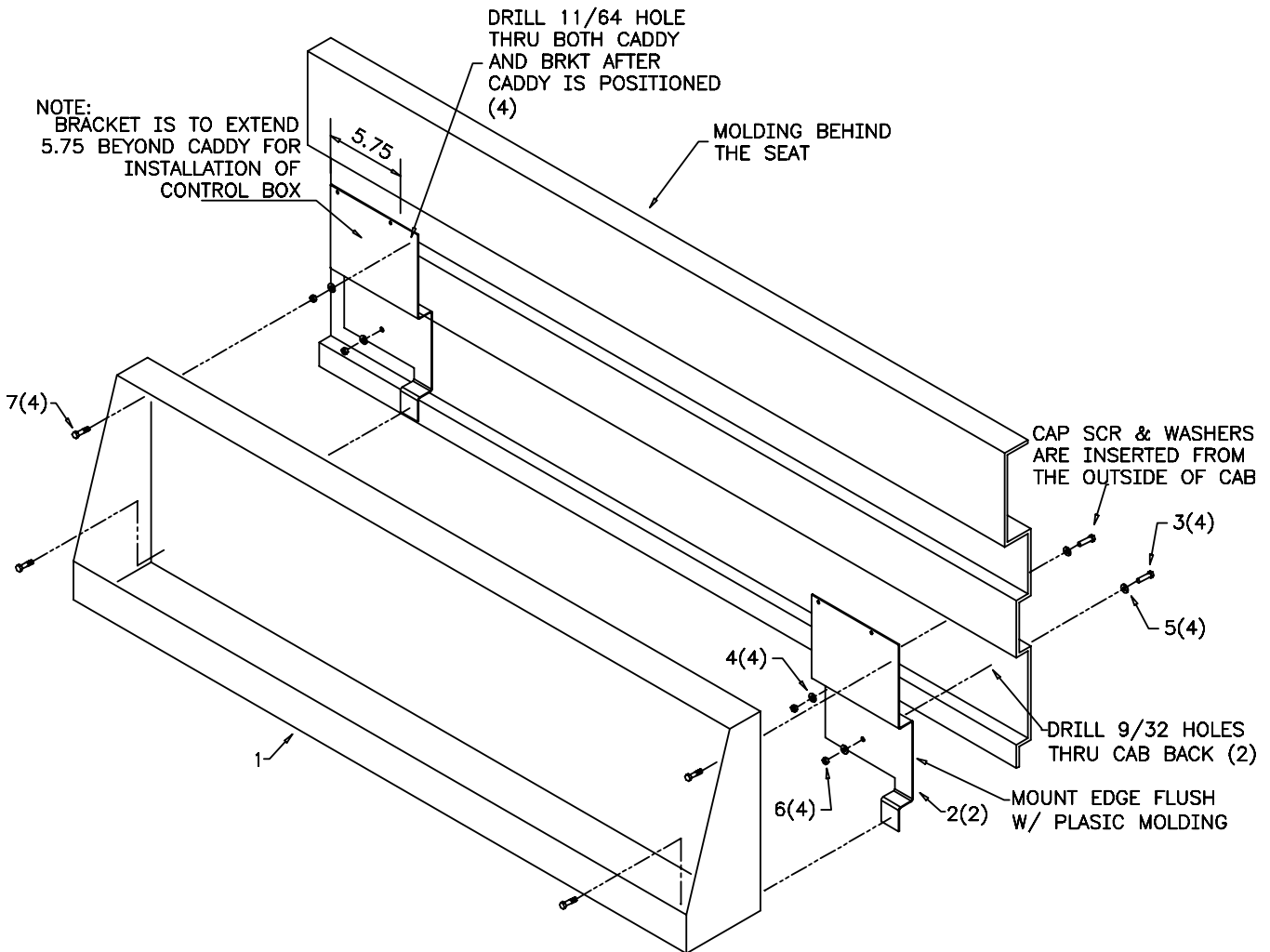
ITEM	PART NO.	DESCRIPTION	QTY
1.	2002805P	SERIES 60 COMPRESSOR	1
2.	60121228	MTG BRACKET-REAR	2
3.	93025998	RUNNING BOARD	1
4.	52714705	SHEAR PLATE	2
5.	72060150	CAP SCR 5/8-11X1-3/4 HHGR5	14
6.	72062091	NUT 5/8-11 LOCK	14
7.	72063119	WASHER 5/8 FLAT HARD	28
8.	72601144	CAP SCR 9/16-12X2 HHGR8	6
9.	72062275	NUT 9/16-12 TOPLOCK	6
10.	72063117	WASHER 9/16 FLAT HARD	12
11.	70073147	FIRE EXTINGUISHER W/BRKT	1
12.	70073146	KIT-REFLECTOR	1
13.	70733305	DEFLECTOR	1
14.	70731788	AIR TANK 22.5GAL	1
15.	73540054	CHECK VALVE	1
16.	70144807	SPRING	4
17.	72053535	STREET ELBOW 3/4NPT 45°	2
18.	72053458	BARB NIPPLE 3/4MPT 3/4	2
19.	72060920	CAP SCR 1/2-13X3-1/4 HHGR5	4
20.	72062080	NUT 1/2-13 LOCK	4
21.	72063005	WASHER 1/2 WRT	8
22.	72531836	REDUCER BUSHING 1-1/4 3/4	2
23.	73054032	SAFETY VALVE 1/4 200PSI	1



NOTE: ITEM 1 CONTAINS OIL COOLER & HOSES (NOT SHOWN). ALL MOUNTING HARDWARE FOR THE COMPRESSOR IS INCLUDED IN THE KIT.

**CHASSIS PREP-BODY W/ SERIES 60  
COMPRESSOR-'99 FORD CHASSIS  
(41714828-2)**

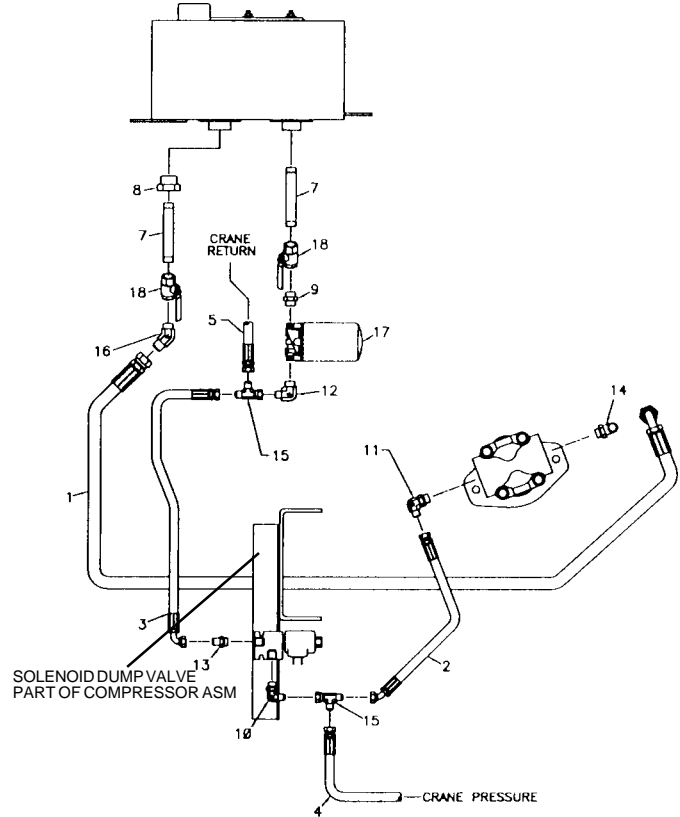
ITEM	PART NO.	DESCRIPTION	QTY
1.	70733084	CAB CADDY	1
2.	60121009	MTG BRACKET	2
3.	72060005	CAP SCR 1/4-20X1-1/4 HHGR5	4
4.	72063001	WASHER 1/4 WRT	4
5.	76392820	WASHER 1/4 BONDED	4
6.	72062104	NUT 1/4-20 LOCK	4
7.	72061004	SHT MTL SCR #14X3/4 SLTHEX	4



**INSTALLATION-BODY W/ CRANE & SERIES 60 COMPRESSOR-'99 FORD CHASSIS (41714827-1)**

CONTINUED ON FOLLOWING PAGE

ITEM	PART NO.	DESCRIPTION	QTY
1.	51394408	HOSE 3/4X39 #12#12 FJ	1REF
2.	51394419	HOSE 1/2X18 #8#8 FJ	1REF
3.	51394882	HOSE 1/2X22 #8#8 FI	1REF
4.	51394660	HOSE 1/2X48 #8#8 FF	1REF
5.	51394661	HOSE 1/2X53 #8#8 FF	1REF
6.	51714435	HOSE KIT (INCL: 1-5)	1
7.	72053145	PIPE NIPPLE 3/4NPT X 4 BLK	2
8.	72053376	REDUCER BUSHING 1-.75NPT	1
9.	72053558	ADAPTER 3/4MPT 3/4MPT	1
10.	72053763	ELBOW #8MSTR #8MJIC 90°	1
11.	72053764	ELBOW #10MSTR #8MJIC 90°	1
12.	72531422	ELBOW 3/4MPT #8MJIC 90°	1
13.	72532358	ADAPTER #8MSTR #8MJIC	1
14.	72053766	ELBOW #10MSTR #12MJIC 90°	1
15.	72532657	ADAPTER #6MSTR #8MJIC	2
16.	72533054	ELBOW 3/4MPT #12MFLR	1
17.	73052000	HYD FILTER 10MIC 3/4FPT	1
18.	73054230	BALL VALVE 3/4NPT	2
19.	70143334	EXHAUST CONNECTOR	1
20.	72060188	CAP SCR 3/4-10X3-1/2 HHGR5	4
21.	72062140	NUT 3/4-10 HEX STL-INSERT	4
22.	72063116	WASHER 3/4 FLAT HARD	8
24.	60121229	MOUNTING BRACKET-FRONT	2
29.	72601144	CAP SCR 9/16-12X2 HHGR8	12
30.	72062275	NUT 9/16-12 HEXTOPLK GR8	12
31.	72060117	WASHER 9/16 FLAT HARD	24

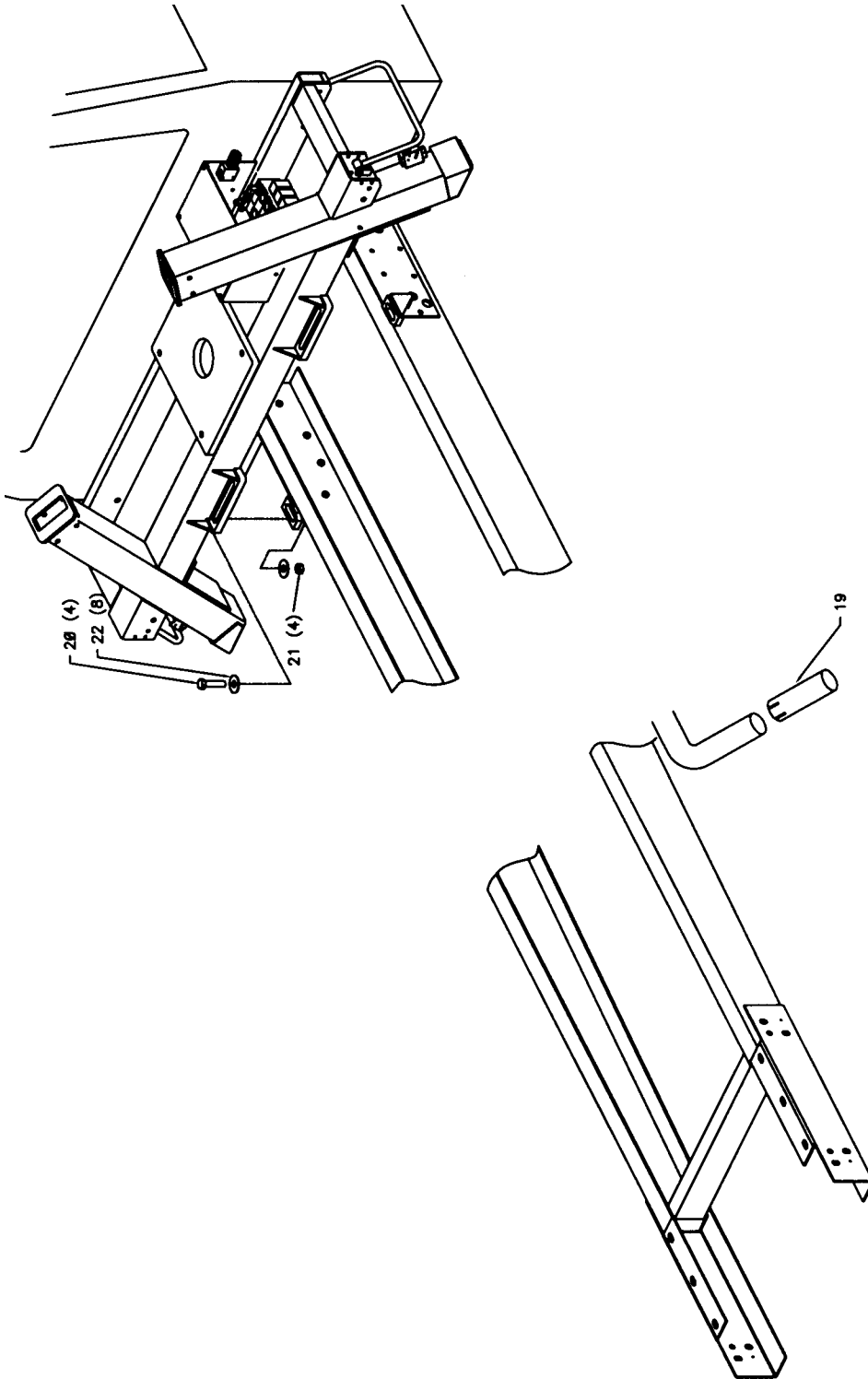


0003011A: 41714827.02:19980713

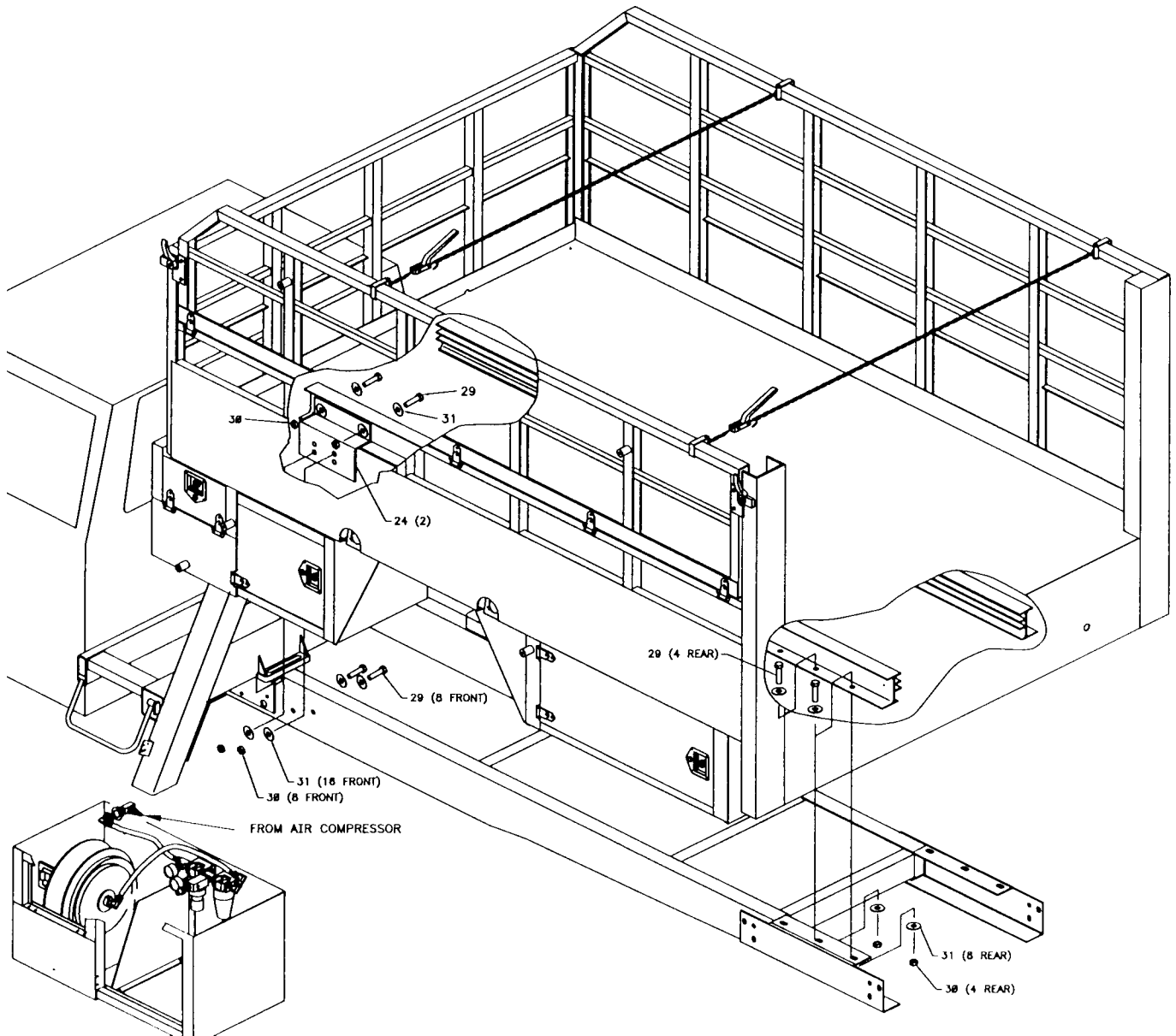
**INSTALLATION-BODY W/CRANE &  
SERIES 60 COMPRESSOR-'99 FORD  
CHASSIS (41714827-2)**

2-11

CONTINUED ON FOLLOWING PAGE



**INSTALLATION-BODY W/ CRANE &  
SERIES 60 COMPRESSOR-'99 FORD  
CHASSIS (41714827-3)**



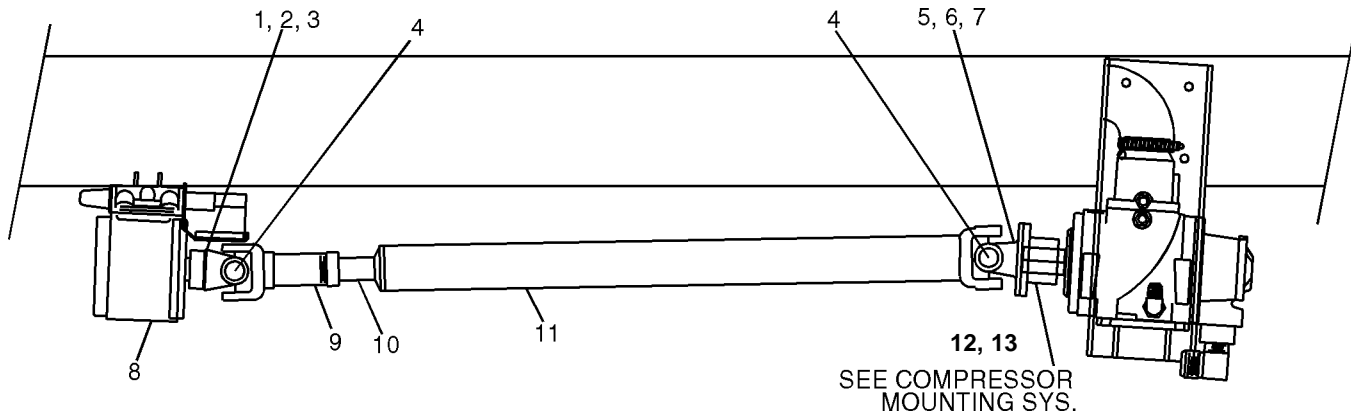


**DRIVESHAFT ASM (70008W)**

ITEM	PART NO.	DESCRIPTION	QTY
1.	300164-533	END YOKE	1
2.	973406-050	SET SCREW W/HOLE 3/8-16	1
3.	301486	WIRE-SET SCR	1
4.	300154-153	U-JOINT	2
5.	300196-329	FLANGE YOKE	1
6.	929406-125	BOLT 3/8X1-1/4UNF GR8	4
7.	925706-198	NUT 3/8 LOCK	4
8.	300159-074	PTO	1
9.	300248-093	FILLER BLOCK	1
10.	300247-006	STUD KIT	1
11.	300155-128	SLIP ASM 1-3/8	1
12.	300198-1312	SHAFT 1	1
13.	300197-017	TUBE-YOKE ASM	1

**WARNING**

The installer of the driveline must inspect the final position of the driveline to determine whether its location provides sufficient protection to an operator, or other personnel, from hazards associated with a rotating driveline. If protection is insufficient, the installation of a guard is required. If you are unsure of methods to guard a rotating driveline, call Iowa Mold Tooling Co., Inc. for instructions. Failure to do so may result in serious injury or death.



**⚠ DANGER**

CONTACT WITH A ROTATING DRIVELINE  
WILL CAUSE  
**DEATH OR SERIOUS INJURY**  
**KEEP AWAY**

- Keep clear of rotating drive shaft.
- Never work on or near an installed power take-off or driveline with the engine running.

70392891

0003011A: 41714826.01:19980713

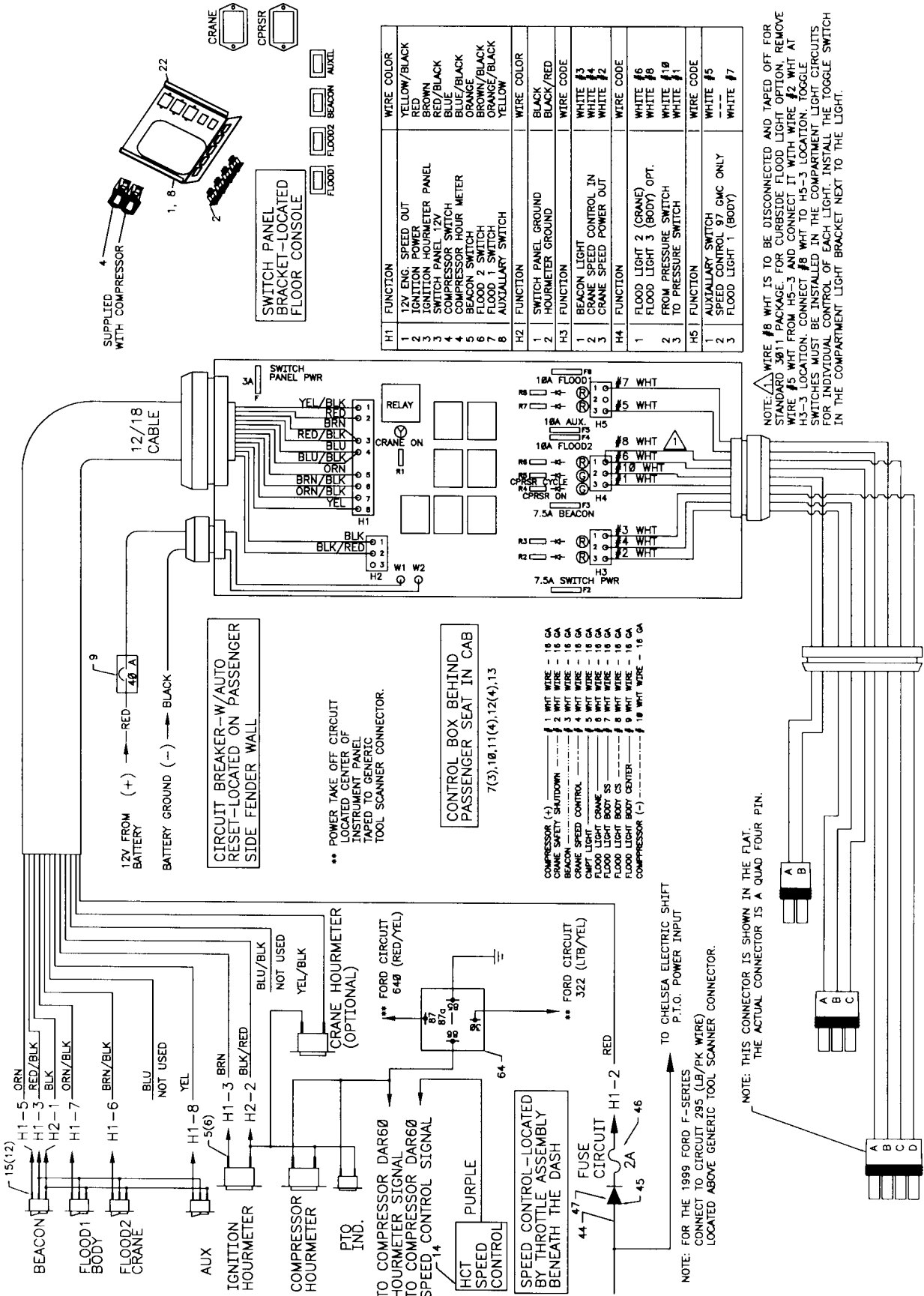
2-14

**ELECTRICAL INSTALLATION-BODY W/  
SERIES 60 COMPRESSOR (41714826-1)**

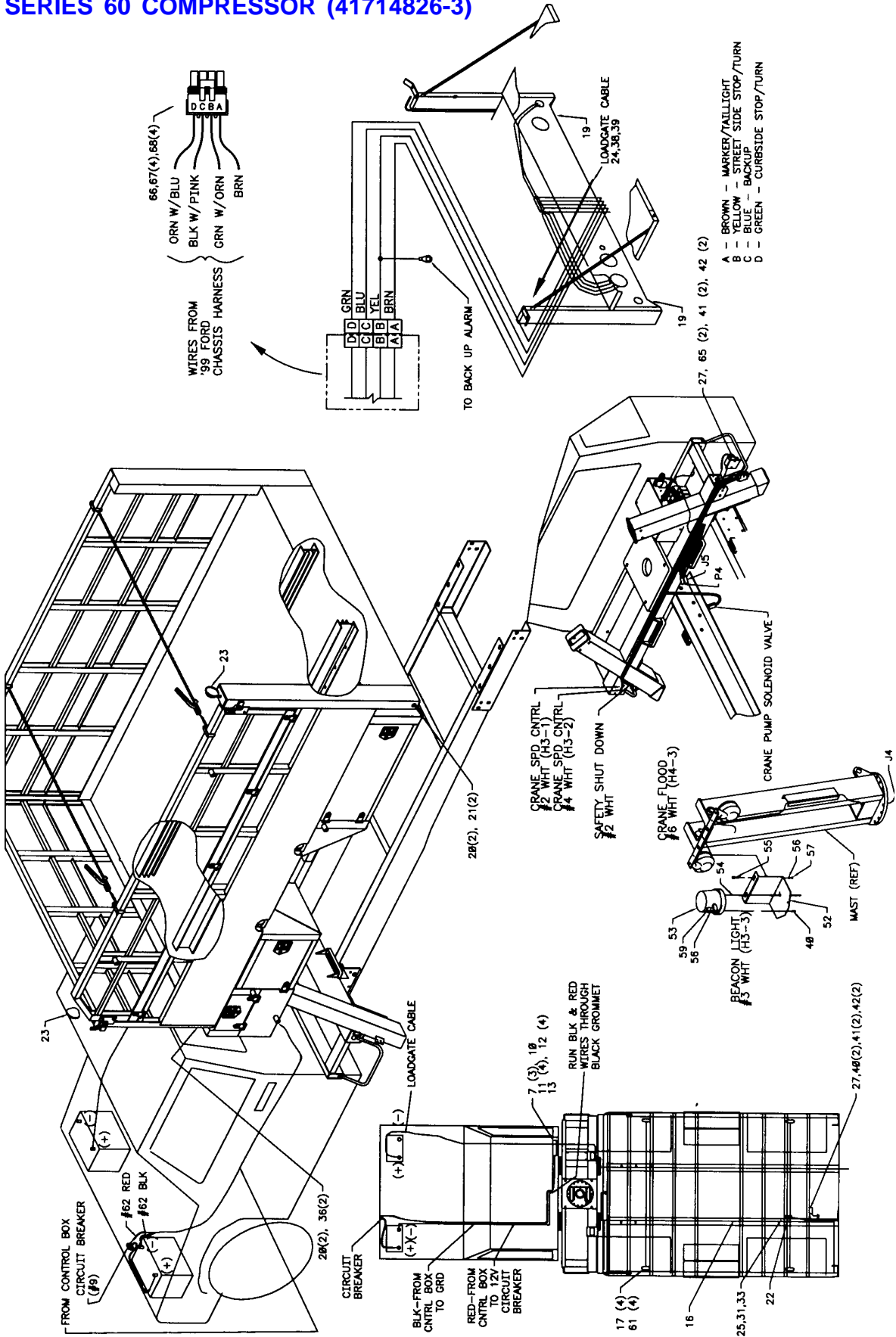
ITEM	PART NO.	DESCRIPTION	QTY
1.	60121244	SWITCH BRACKET	1
2.	77041386	SWITCH-SGL POLE LIGHTED	4
3.	77042072	INDICATOR LIGHT	1
4.	70073155	METER-HOUR	1
5.	77040186	TERMINAL 1/4FSLPON 16-14GA	19
7.	72060835	SCR #8-18X3/4 SLFTPG	6
8.	70394978	DECAL-SWITCH PANEL	1
9.	77044672	CIRCUIT BREAKER 40A	1
10.	60121009	BRACKET-CONTROL BOX	1
11.	72060614	MACH SCR #8-32X1 RDHD	4
12.	72062207	NUT #8-32 HEX LOCK	4
13.	51713793	CONTROL BOX (SEE DWG)	1
14.	70733297	IDLE CONTROL	1
15.	60121243	SWITCH BRACKET	1
16.	77044694	WIRE HARNESS	1
17.	77040384	LIGHT-COMPARTMENT	4
18.	72661491	CLIP-CONDUIT CLAMP	12
19.	76392227	RUBBER GROMMET 3/8	2
20.	76393636	RUBBER GROMMET 2	2
21.	77040357	LIGHT-CLEAR RED	4
22.	72061100	SCR #10X1/2 HH SLFTPG	4
23.	77040026	FLOODFLIGHT 12V	2
24.	89044330	LOOM 5/8 ID SPLIT	25FT
25.	77044689	CONNECTOR 1-WAY	1
26.	72061004	SHT MTL SCR #14X3/4 SLTHEX	3
27.	77040020	HORN-BACKUP	1
28.	77040000	TERMINAL #10STUD 16-14GA	4
29.	77044704	HARNESS	1
30.	77044703	HARNESS	2
31.	70394069	SEAL-CABLE	1
33.	77044550	TERMINAL F 20-18GA	1
35.	70145522	RETAINER-SPRING CLIP	20
36.	77040358	LIGHT-CLEAR AMBER	2
37.	89044056	LOOM 5/16 ID SPLIT	17FT
38.	77040009	TERMINAL 3/8STUD #2CABLE	1
39.	89394234	TUBE-HEAT SHRINK 1/2X6	1
40.	72060004	CAP SCR 1/4-20X1 HHGR5	2
41.	72063001	WASHER 1/4 WRT	2
42.	72062104	NUT 1/4-20 LOCK	5
43.	77040047	TERMINAL 1/4MSLPON 16-14GA	1
44.	77044556	DIODE 2.2AMP/274V	1
45.	77044693	FUSE AGC 2AMP	1
46.	77044691	FUSE HOLDER	1
47.	70145421	TUBE-HEAT SHRINK .18	.5FT
48.	77040377	CONNECTOR-TELSPLICE	5
49.	77040378	SPLICE TAP	1
50.	70034151	TIE	2
52.	60116337	BRACKET-BEACON LT	1
53.	77040013	BEACON LIGHT-AMBER	1
54.	77040048	BUTT CONNECTOR	1
55.	72060048	CAP SCR 3/8-16X1-1/2 HHGR5	2
56.	72063051	WASHER 3/8 LOCK	2
57.	72062002	NUT 3/8-16 LOCK	2
59.	72063049	WASHER 1/4 LOCK	3
60.	77044651	TERMINAL 3/8STUD 16-14GA	2
61.	76394572	GROMMET-LIGHT	4
63.	77044744	HARNESS	1
64.	77041251	RELAY	1
65.	72060002	CAP SCR 1/4-20X3/4 HH	2
66.	77044623	CONNECTOR	1
67.	70394069	SEAL-CONNECTOR	4
68.	77044550	TERMINAL	4

**ELECTRICAL INSTALLATION-BODY W/  
SERIES 60 COMPRESSOR (41714826-2)**

CONTINUED ON FOLLOWING PAGE



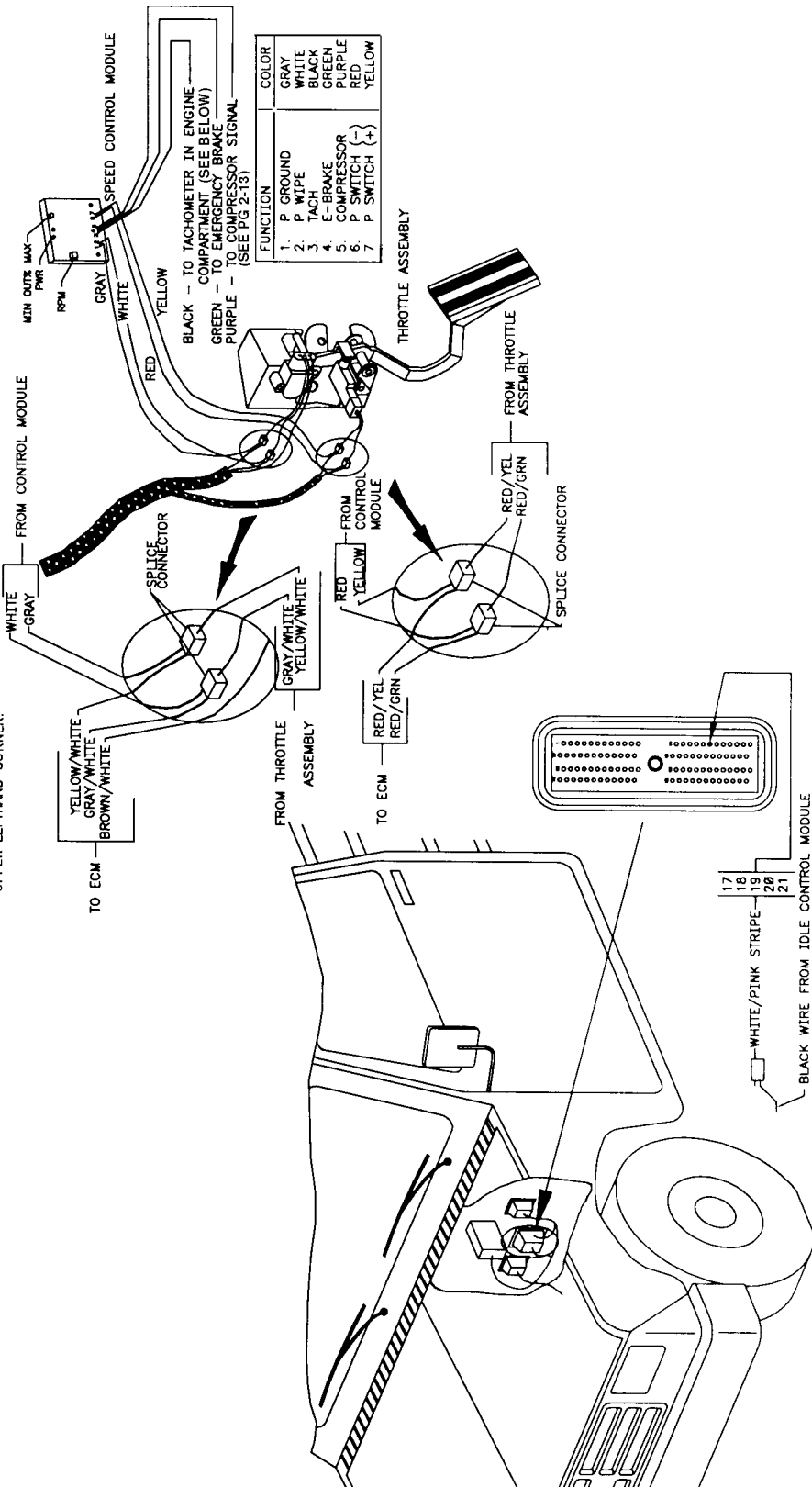
**ELECTRICAL INSTALLATION-BODY W/  
SERIES 60 COMPRESSOR (41714826-3)**



# ELECTRICAL INSTALLATION-BODY W/ SERIES 60 COMPRESSOR (41714826-4)

CONTINUED ON FOLLOWING PAGE

**\*\* WARNING \*\* :** CONNECTOR SOMETIMES IS INSTALLED UPSIDE DOWN. PIN 19 (WHT/PNK) COULD THEN BE LOCATED AT UPPER LEFHAND CORNER.

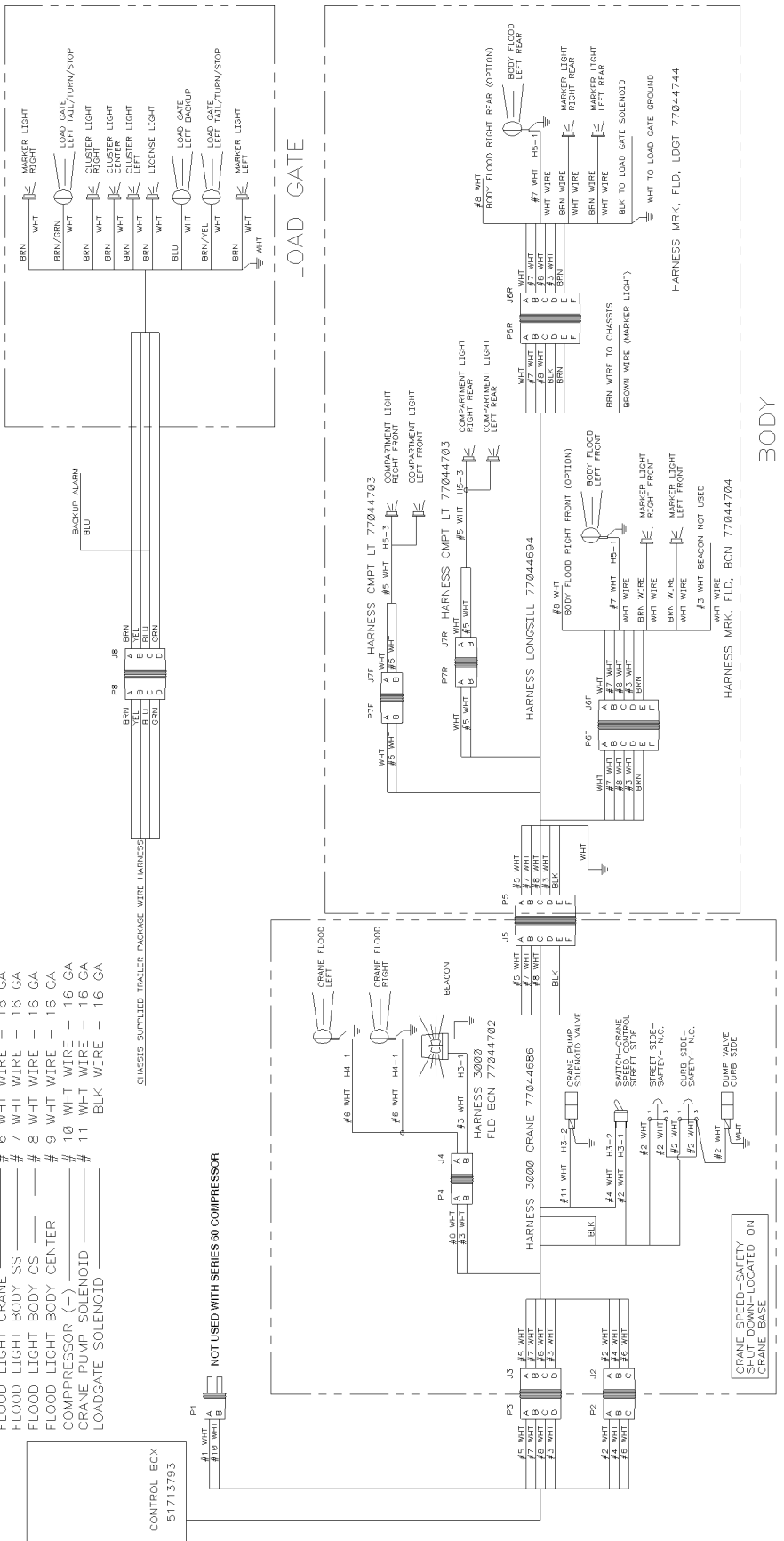


- COMPRESSOR (+) \_\_\_\_\_ # 1 WHT WIRE - 16 GA
- CRANE SAFETY SHUTDOWN \_\_\_\_\_ # 2 WHT WIRE - 16 GA
- BEACON \_\_\_\_\_ # 3 WHT WIRE - 16 GA
- CRANE SPEED CONTROL \_\_\_\_\_ # 4 WHT WIRE - 16 GA
- CMPT LIGHT \_\_\_\_\_ # 5 WHT WIRE - 16 GA
- FLOOD LIGHT CRANE \_\_\_\_\_ # 6 WHT WIRE - 16 GA
- FLOOD LIGHT BODY SS \_\_\_\_\_ # 7 WHT WIRE - 16 GA
- FLOOD LIGHT BODY CS \_\_\_\_\_ # 8 WHT WIRE - 16 GA
- FLOOD LIGHT BODY CENTER \_\_\_\_\_ # 9 WHT WIRE - 16 GA
- COMPRESSOR (-) \_\_\_\_\_ # 10 WHT WIRE - 16 GA
- CRANE PUMP SOLENOID \_\_\_\_\_ # 11 WHT WIRE - 16 GA
- LOADGATE SOLENOID \_\_\_\_\_ BLK WIRE - 16 GA

CHASSIS SUPPLIED TRAILER PACKAGE WIRE HARNESS



NOT USED WITH SERIES 60 COMPRESSOR



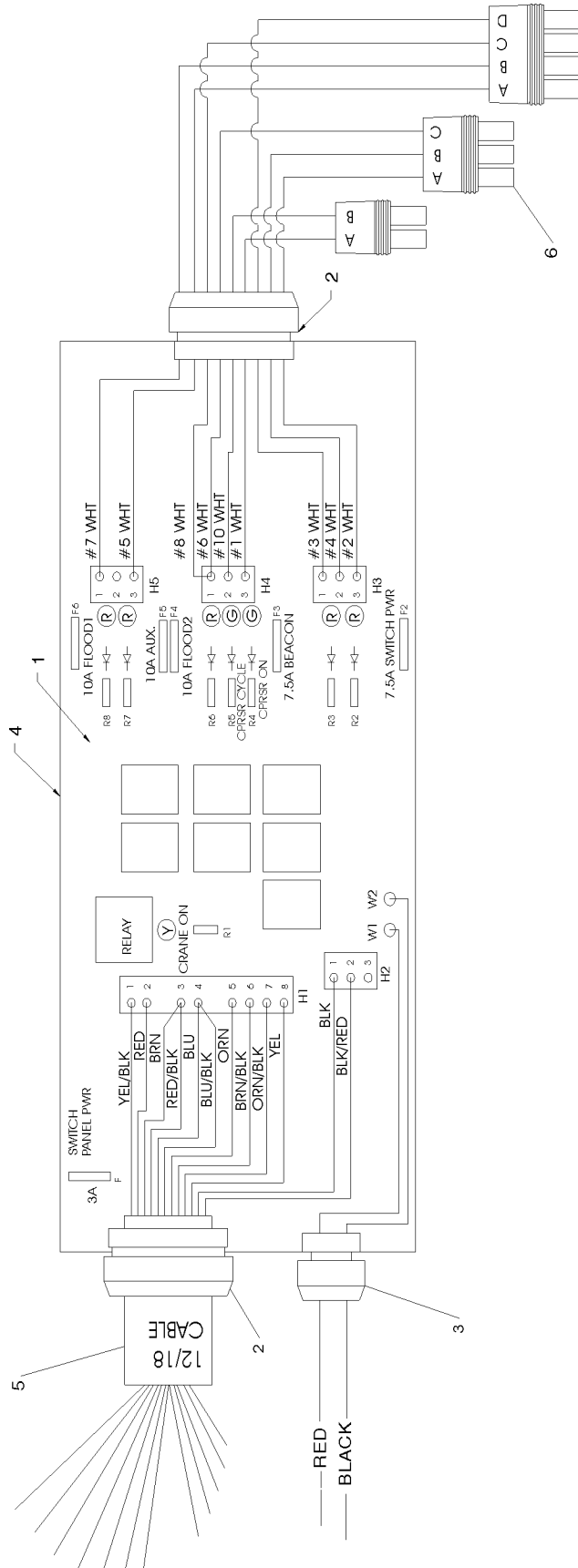
0003011A: 51713793.01:19980401

**CONTROL BOX (51713793)**

- 1. 77041515 RELAY BOARD
- 2. 77044653 STRAIN RELIEF .39-.55
- 3. 77044671 STRAIN RELIEF .24-.47
- 4. 51713975 ENCLOSURE
- 5. 89044136 CABLE 18GA 12WIRE
- 6. 77044710 HARNESS

2-19

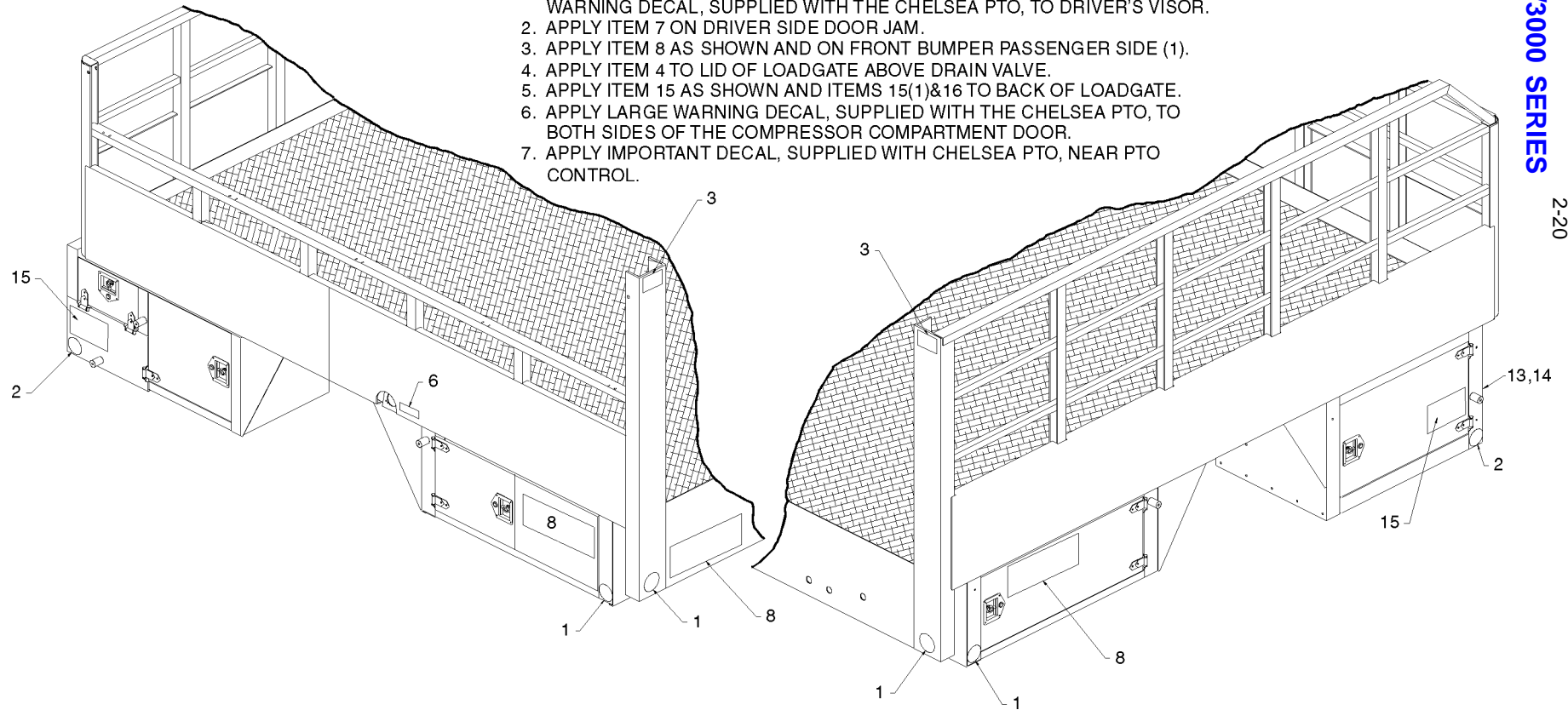
- 1
- 2
- 1
- 1
- 13FT
- 1



ITEM	PART NO.	DESCRIPTION	QTY				
1.	70039057	REFLECTOR-RED ROUND	4	9.	70392965	DECAL-THINK SAFETY	1
2.	70039058	REFLECTOR-AMBER ROUND	2	10.	70392982	DECAL-SERVICE AND REPAIR	2
3.	70391595	DECAL-CHAIN LATCH	2	11.	70393309	LICENSE PLATE-IMT	1
4.	70391601	DECAL-AIR TANK DRAIN	1	12.	70394092	DECAL-CAUTION BRK/COMP	1
5.	70392213	DECAL-DON'T WASH/WAX	1	13.	70394097	DECAL-1000 RPM MAX	1
6.	70392309	DECAL-DIESEL FUEL ONLY	1	14.	71030134	DECAL-CAUTION OIL LEVEL	2
7.	70392387	DECAL-FINAL STG VEH CERT	1	15.	71393883	DECAL-TIRE HANDLER PROD	3
8.	70392865	DECAL-ELEC HAZARD LG	4	16.	71393886	DECAL-EXPLODING TANK	1

**NOTES:**

1. APPLY ITEMS 5,9,10,12&14 TO THE DRIVERS VISOR.  
ALSO APPLY THE POWER TAKE OFF OPERATION DECAL AND THE SMALL WARNING DECAL, SUPPLIED WITH THE CHELSEA PTO, TO DRIVER'S VISOR.
2. APPLY ITEM 7 ON DRIVER SIDE DOOR JAM.
3. APPLY ITEM 8 AS SHOWN AND ON FRONT BUMPER PASSENGER SIDE (1).
4. APPLY ITEM 4 TO LID OF LOADGATE ABOVE DRAIN VALVE.
5. APPLY ITEM 15 AS SHOWN AND ITEMS 15(1)&16 TO BACK OF LOADGATE.
6. APPLY LARGE WARNING DECAL, SUPPLIED WITH THE CHELSEA PTO, TO BOTH SIDES OF THE COMPRESSOR COMPARTMENT DOOR.
7. APPLY IMPORTANT DECAL, SUPPLIED WITH CHELSEA PTO, NEAR PTO CONTROL.

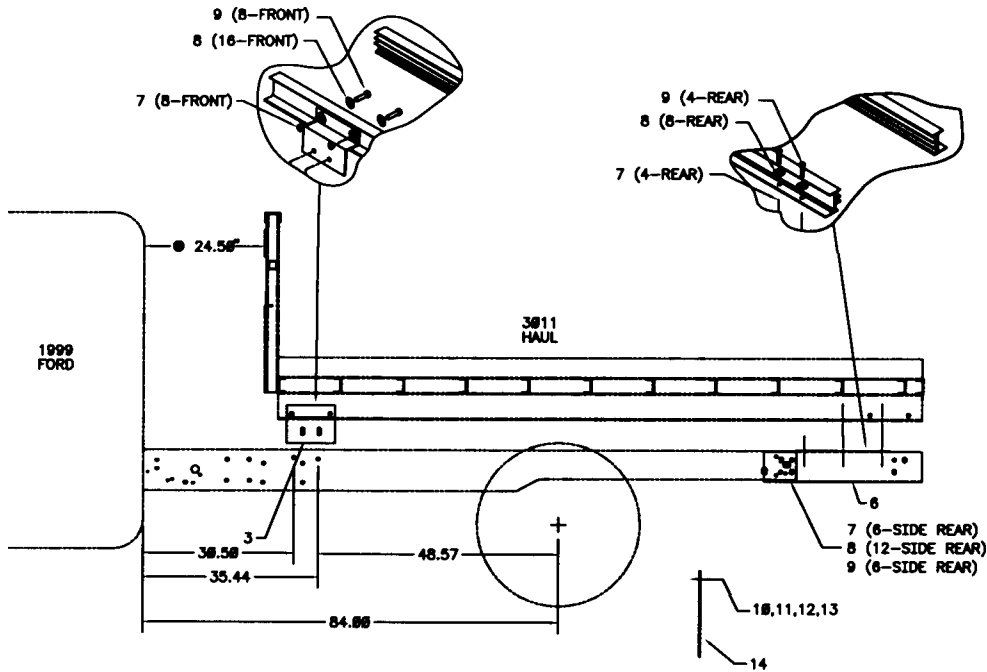


0003011A: 95713665.01:19980401  
**DECAL KIT-3011 BODY W/3000 SERIES**  
**CRANE (95713665)**



### INSTALLATION KIT-3011 1999 FORD 84"CA (93714831)

3.	60121229	BRACKET -FRT MTG	2
6.	60121228	MTG BRKT-REAR	2
7.	72062275	NUT 9/16-12 HEX LOCK GR8	18
8.	72063117	WASHER 9/16 FLAT	36
9.	72601144	CAP SCR 9/16-12X2 HHGR8Z	18
10.	72060005	CAP SCR 1/4-20X1-1/4 HHGR5Z	6
11.	72062104	NUT 1/4-20 HEX NYLOC	6
12.	72063001	WASHER 1/4 FLAT	6
13.	72661471	WASHER 1/4X1	6
14.	76393799	MUD FLAP W/IMT LOGO	2



0003011A: :19980401



**IOWA MOLD TOOLING CO., INC.**

BOX 189, GARNER, IA 50438-0189

TEL: 515-923-3711

TECHNICAL SUPPORT FAX: 515-923-2424