

---

Manual # 99904765

# 30/217 Technical Specifications

Revision Date 20111215



IOWA MOLD TOOLING CO., INC.

PO Box 189

Garner, IA 50438

Tel: 641-923-3711 FAX: 641-923-2424

Website: <http://www.imt.com>

Copyright © 2009 Iowa Mold Tooling Co., Inc.  
All rights reserved

No part of this publication may be reproduced, stored in a retrieval system, or transmitted in any form or by any means, electronic, mechanical, photocopying, recording or otherwise without the prior written permission of Iowa Mold Tooling Co., Inc.

**Iowa Mold Tooling Co., Inc. is an Oshkosh Corporation company.**



---

# Contents

Revisions .....	ii
<b>Technical Data and Charts</b> .....	<b>3</b>
30/217 Technical Specifications .....	4
30/217 Pressure Settings .....	5
30/217K2 Capacity Chart .....	6
30/217K3 Capacity Chart .....	7
30/217K4 Capacity Chart .....	8
30/217K5 Capacity Chart .....	9
30/217K6 Capacity Chart .....	10
30/217K7 Capacity Chart .....	11
30/217K8 Capacity Chart .....	12
30/217 Dimensional Drawing .....	13
30/217 Hydraulic Diagram .....	14

---

## Revisions

DATE	LOCATION	DESCRIPTION

---

**CHAPTER 1****Technical Data and Charts****In This Chapter**

30/217 Technical Specifications .....	3
30/217 Pressure Settings .....	5
30/217K2 Capacity Chart .....	6
30/217K3 Capacity Chart .....	7
30/217K4 Capacity Chart .....	8
30/217K5 Capacity Chart .....	9
30/217K6 Capacity Chart .....	10
30/217K7 Capacity Chart .....	11
30/217K8 Capacity Chart .....	12
30/217 Dimensional Drawing .....	13
30/217 Hydraulic Diagram .....	14

## 30/217 Technical Specifications

30/217	2-Hydraulic	3-Hydraulic	4-Hydraulic	5-Hydraulic	6-Hydraulic	7-Hydraulic	8-Hydraulic
Crane Rating*	203,970 ft-lb (28.2 tm)	196,740 ft-lb (27.2 tm)	192,400 ft-lb (26.6 tm)	188,060 ft-lb (26.0 tm)	181,550 ft-lb (25.1 tm)	179,380 ft-lb (24.8 tm)	177,210 ft-lb (24.5 tm)
Maximum Horizontal Reach	27' 3" (8.3 m)	34' 1" (10.4 m)	41' 0" (12.5 m)	48' 3" (14.7 m)	55' 5" (16.9 m)	62' 8" (19.1 m)	69' 7" (21.2 m)
Maximum Vertical Reach	35' 5" (10.8 m)	42' 4" (12.9 m)	49' 3" (15.0 m)	56' 5" (17.2 m)	63' 8" (19.4 m)	70' 10" (21.6 m)	78' 1" (23.8 m)
Maximum Capacity	23,700 lb (10,750 kg)	23,080 lb (10,470 kg)	23,040 lb (10,450 kg)	22,650 lb (10,275 kg)	22,375 lb (10,150 kg)	22,255 lb (10,095 kg)	22,045 lb (10,000 kg)
Max Cap @ Max Reach	7440 lb (3375 kg)	5510 lb (2500 kg)	4210 lb (1910 kg)	3195 lb (1450 kg)	2425 lb (1100 kg)	1875 lb (850 kg)	1435 lb (650 kg)
Crane Weight **	5800 lb (2630 kg)	6285 lb (2850 kg)	6745 lb (3060 kg)	7185 lb (3260 kg)	7605 lb (3450 kg)	7935 lb (3600 kg)	8210 lb (3725 kg)
Hook Approach							
Vertical	8' 8" (2640 mm)	8' 5" (2560 mm)	8' 2" (2480 mm)	7' 10" (2400 mm)	7' 7" (2320 mm)	7' 4" (2240 mm)	7' 1" (2160 mm)
Horizontal	1' 8" (0.52 m)	2' 0" (0.60 m)	2' 3" (0.68 m)	2' 6" (0.76 m)	2' 9" (0.84 m)	3' 0" (0.92 m)	3' 3" (1.00 m)
Center of Gravity - Stored							
Vertical	2' 9" (830 mm)	2' 9" (850 mm)	2' 10" (865 mm)	2' 11" (880 mm)	2' 11" (900 mm)	3' 0" (915 mm)	3' 0" (925 mm)
Horizontal (C/L RotTo Bridge)	11.6" (295 mm)	11.8" (300 mm)	11.8" (300 mm)	11.6" (295 mm)	11.4" (290 mm)	11.2" (285 mm)	11.2" (285 mm)

\* Crane rating (ft-lb) is the rated load (lb) multiplied by the respective distance (ft) from centerline of rotation with all extensions retracted and the inner and outer booms in a horizontal position, per ANSI B30.22. \*\* Crane weight does not include stabilizers.

30/217 Specifications	
Stabilizer Pad Diameter	8.0" (200 mm)
Crane Storage Height	7' 9" (2355 mm)
Mounting Space ***	3' 6" (1060 mm)
Rotational Torque	24,230 ft-lb (3.35 tm)
Rotation	420°
Optimum Pump Performance	17 U.S. gpm (65 lpm)
System Pressure	4640 psi (320 Bar)
Oil Reservoir Capacity	42.3 gal (160 L)
Stabilizer Extension Span	
Standard (manual out / hydraulic down)	20' 4" (6200 mm)
Weight	1045 lb (475 kg)
*** Maximum swing clearance radius required is 2'-5" (734 mm) at 8'-5" (2562 mm) from top of chassis frame.	

Minimum Chassis Specs	
Front Axle Rating (GAWR)	16,000 lb (7255 kg)
Rear Axle Rating (GAWR)	40,000 lb (18,145 kg)
Resistance To Bending Moment	2,700,000 in-lb (311,075 kg-m)

## 30/217 Pressure Settings

WORKING PRESSURE ON MAIN-RELIEF VALVE & PORT RELIEF VALVES					
FUNCTION	DIRECTION	PORT	25/180		RSQ240
			PVG32		
Main-relief valve			4640 psi (320 bar)		4640 psi (320 bar)
Slewing system	Right	A	P	2320 psi 160 bar (LS)	P
	Left	B	P	2320 psi 160 bar (LS)	P
Boom cylinder	Down	A	915 psi (63 bar)	725 psi (50 bar) (LS)	725 psi (50 bar)
	Up	B	P		P
Outer boom (Jib) cylinder	Up	A	4640 psi (320 bar)		4640 psi (320 bar)
	Down	B	3045 psi (210 bar)	2610 psi (180 bar) (LS)	2900 psi (200 bar)
Extension cylinders	Extend	A	P		P
	Retract	B	P		P
Rotator	Right	A	2540 psi (175 bar)		3190 psi (220 bar)
	Left	B	2540 psi (175 bar)		3190 psi (220 bar)
Grab		A	2540 psi (175 bar)		3190 psi (220 bar)
		B	2540 psi (175 bar)		3190 psi (220 bar)
Separate stabilizer valve			1815 psi (125 bar)		1815 psi (125 bar)

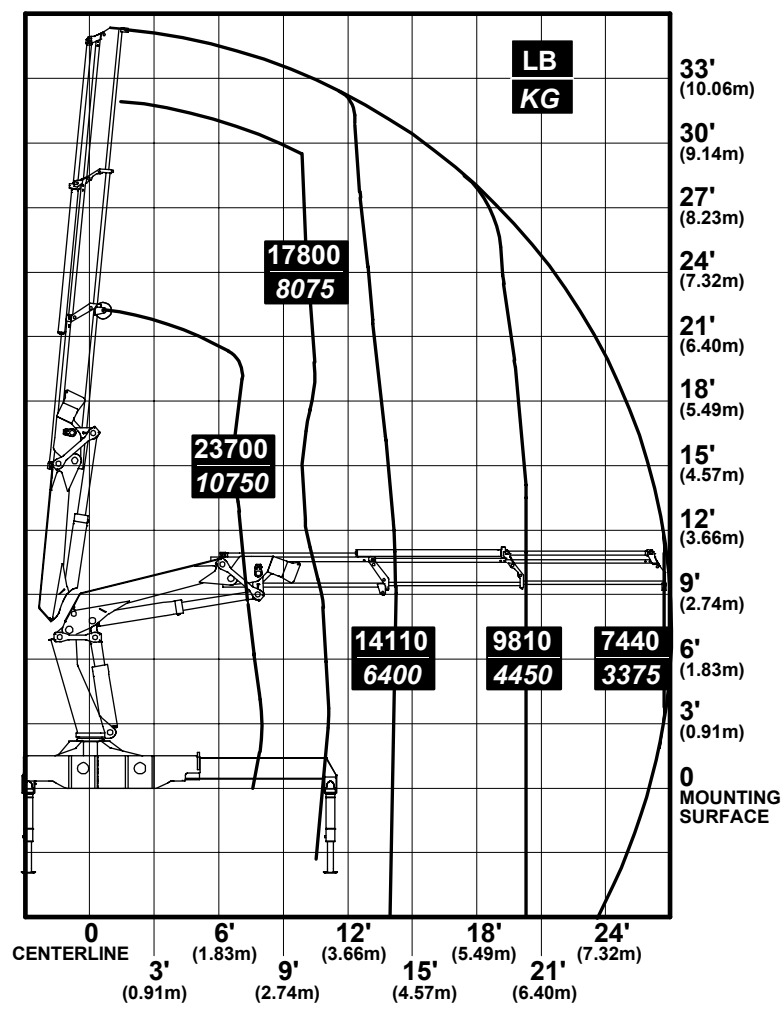
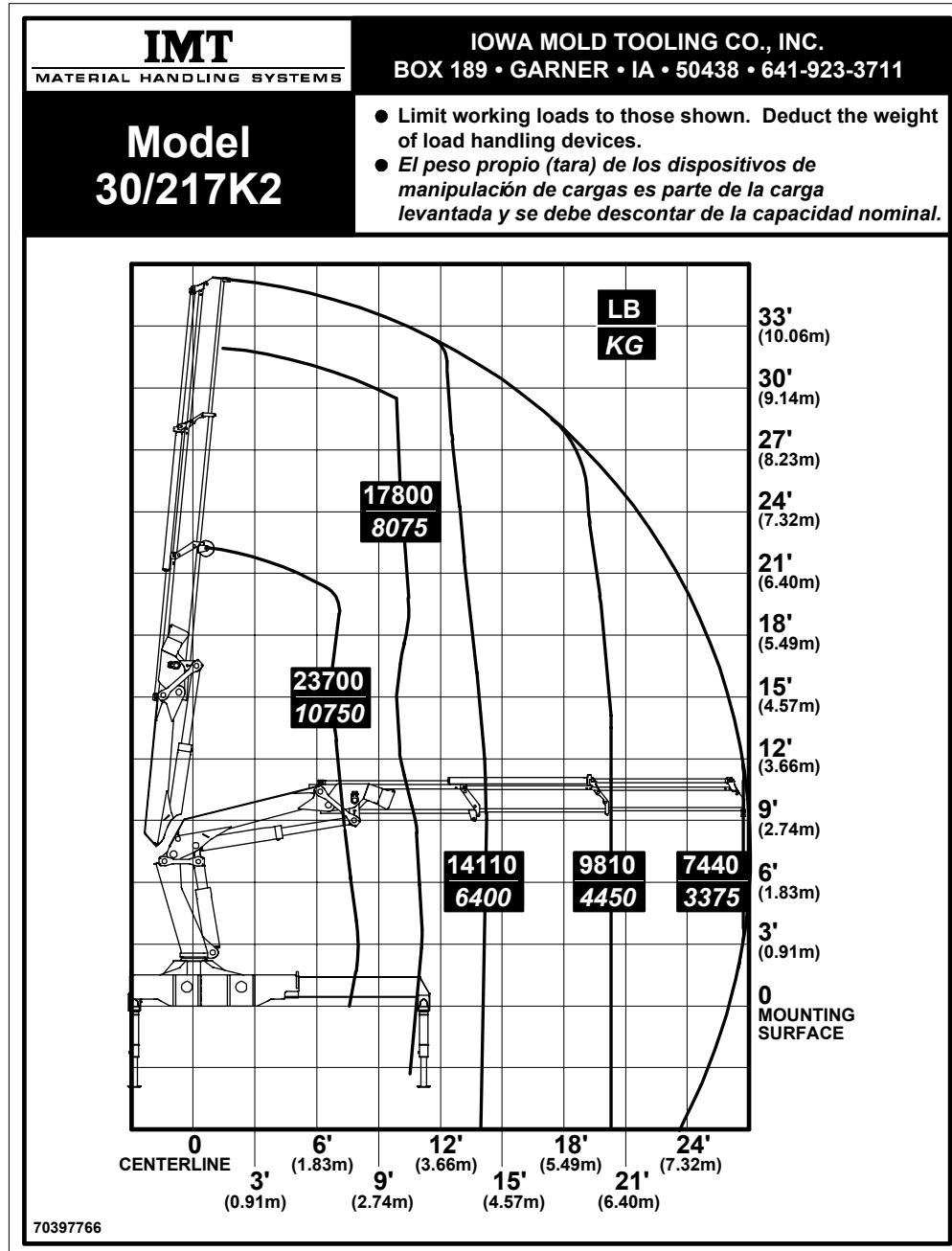
**NOTE: Keep outer boom (jib) horizontal when testing and adjusting valves.**

OPENING PRESSURE ON LOAD-HOLDING VALVES			
Function	Direction	Port	
Planetary Gear		A/B	2175 psi (150 bar)
Boom Cylinder C2-T			5005 psi (345 bar)
Jib Cylinder C2-V2			5075 psi (350 bar)
Extension Cylinder C1-C2	Retract	B	6235 psi (430 bar)
	Extend	A	3045 psi (210 bar)

PRESSURE SETTING FOR LOAD MOMENT LIMITATION (LMB)	
Load moment limitation (LMB)	4495 psi (310 bar)
HDL	3915 psi (270 bar)

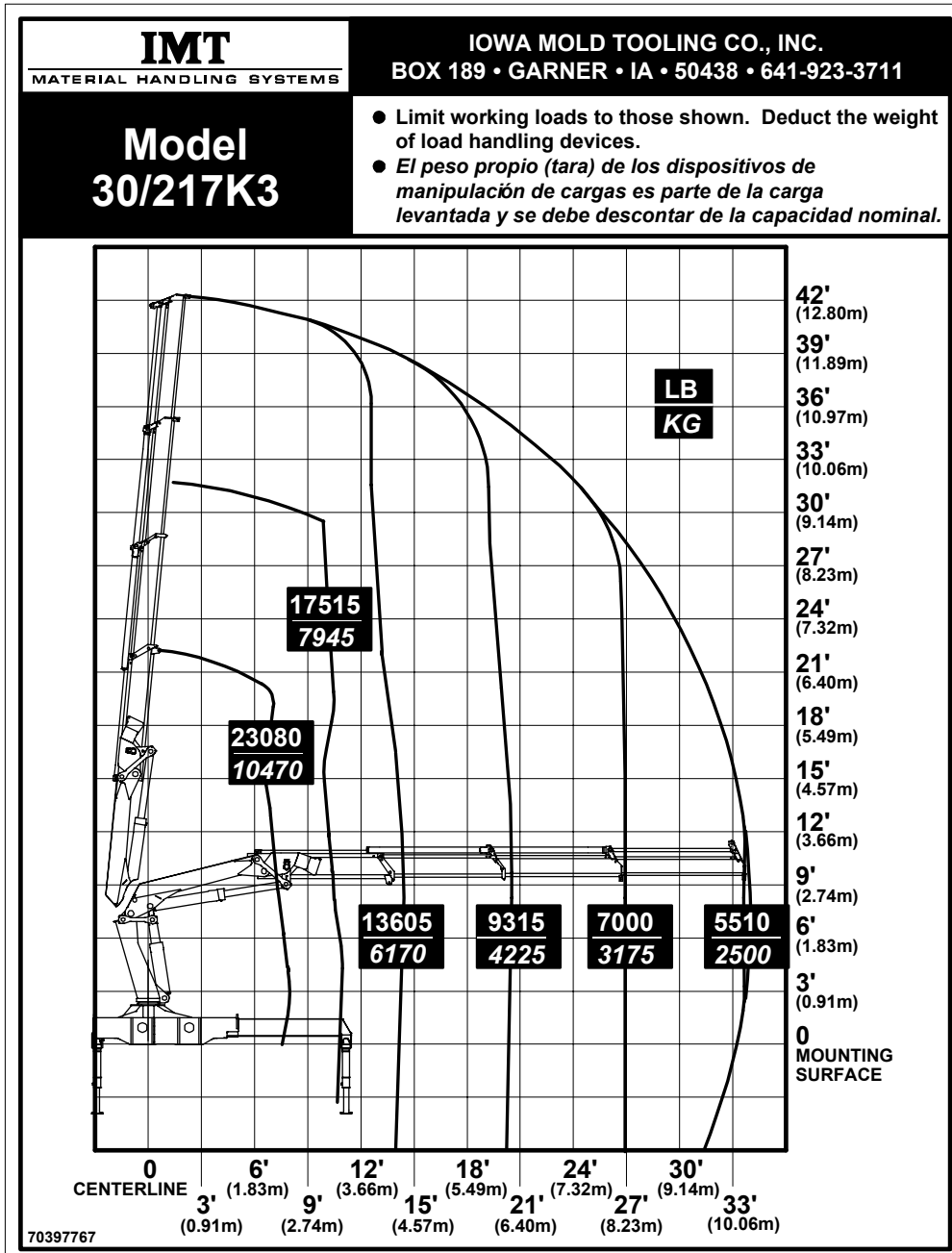
MAXIMUM PUMP PERFORMANCE	
Pump performance	17.2 gal/min (65 lpm)

# 30/217K2 Capacity Chart

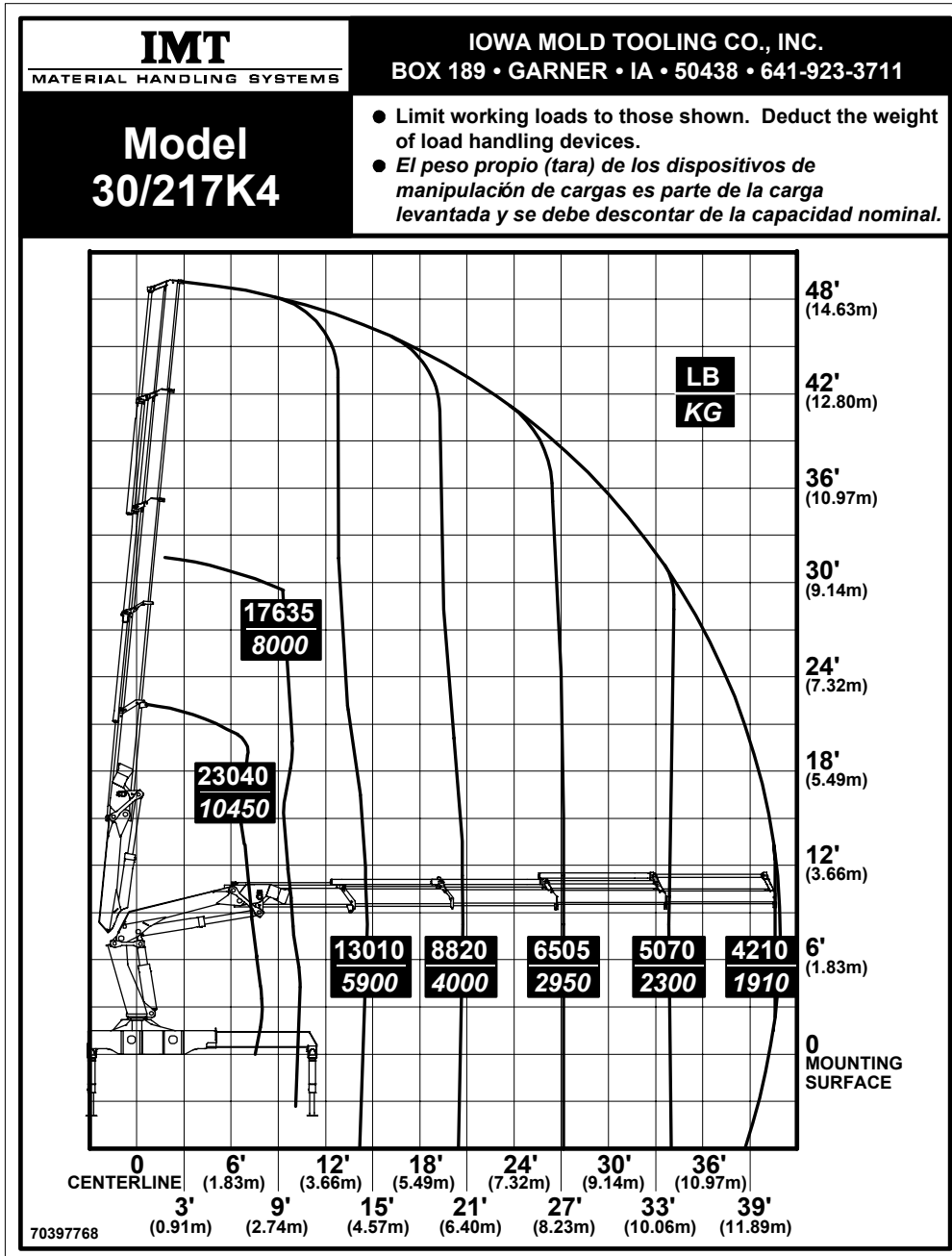




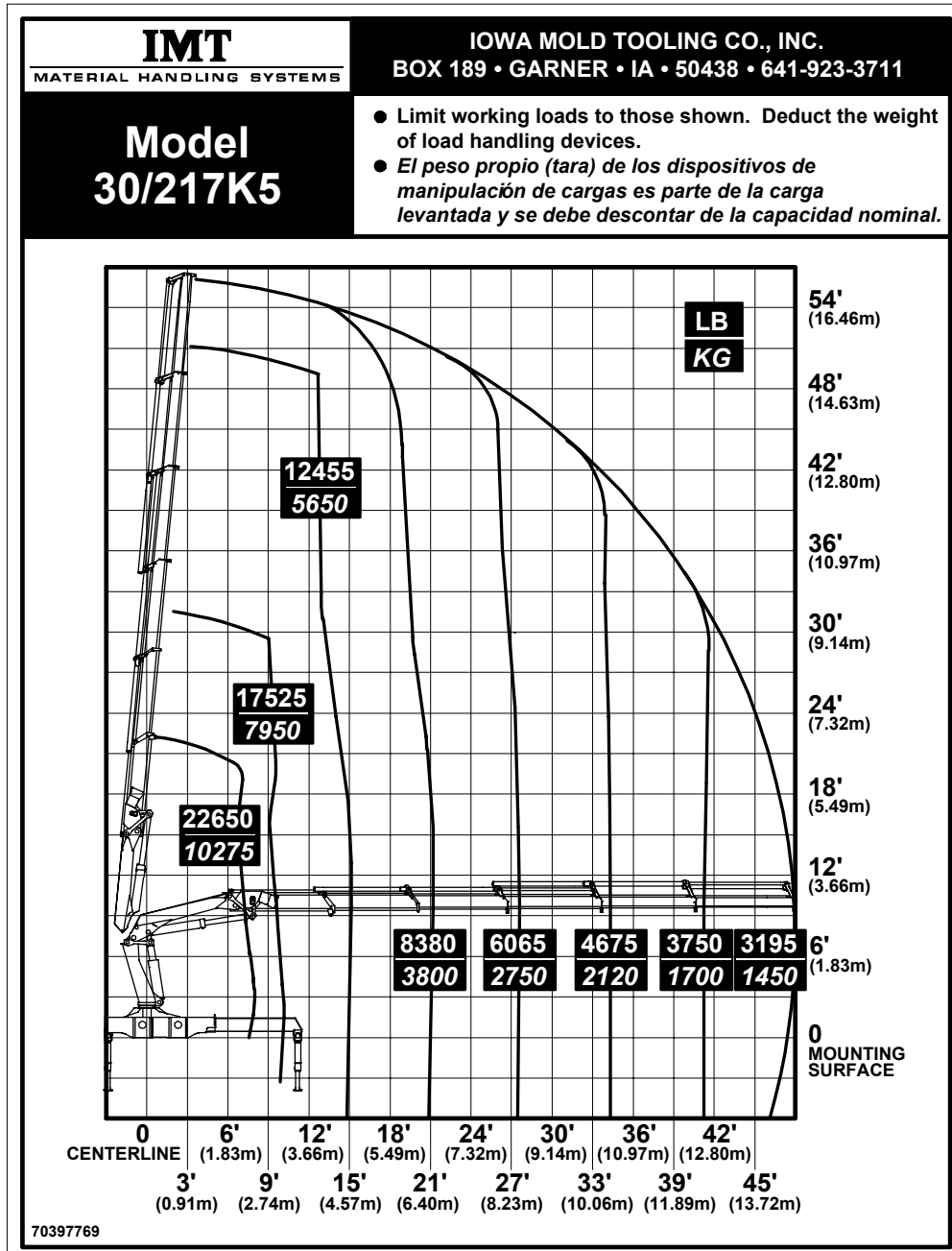
# 30/217K3 Capacity Chart



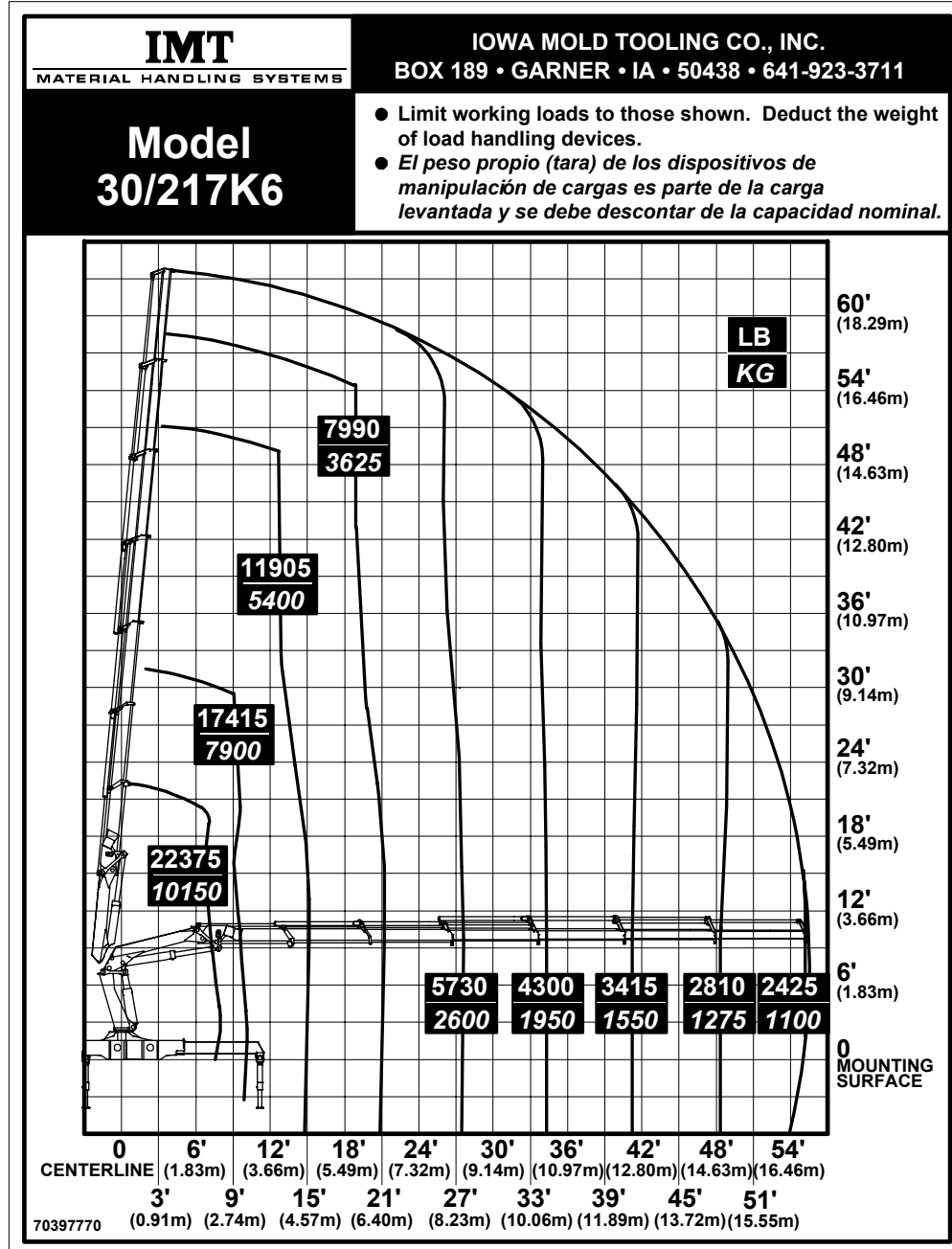
# 30/217K4 Capacity Chart



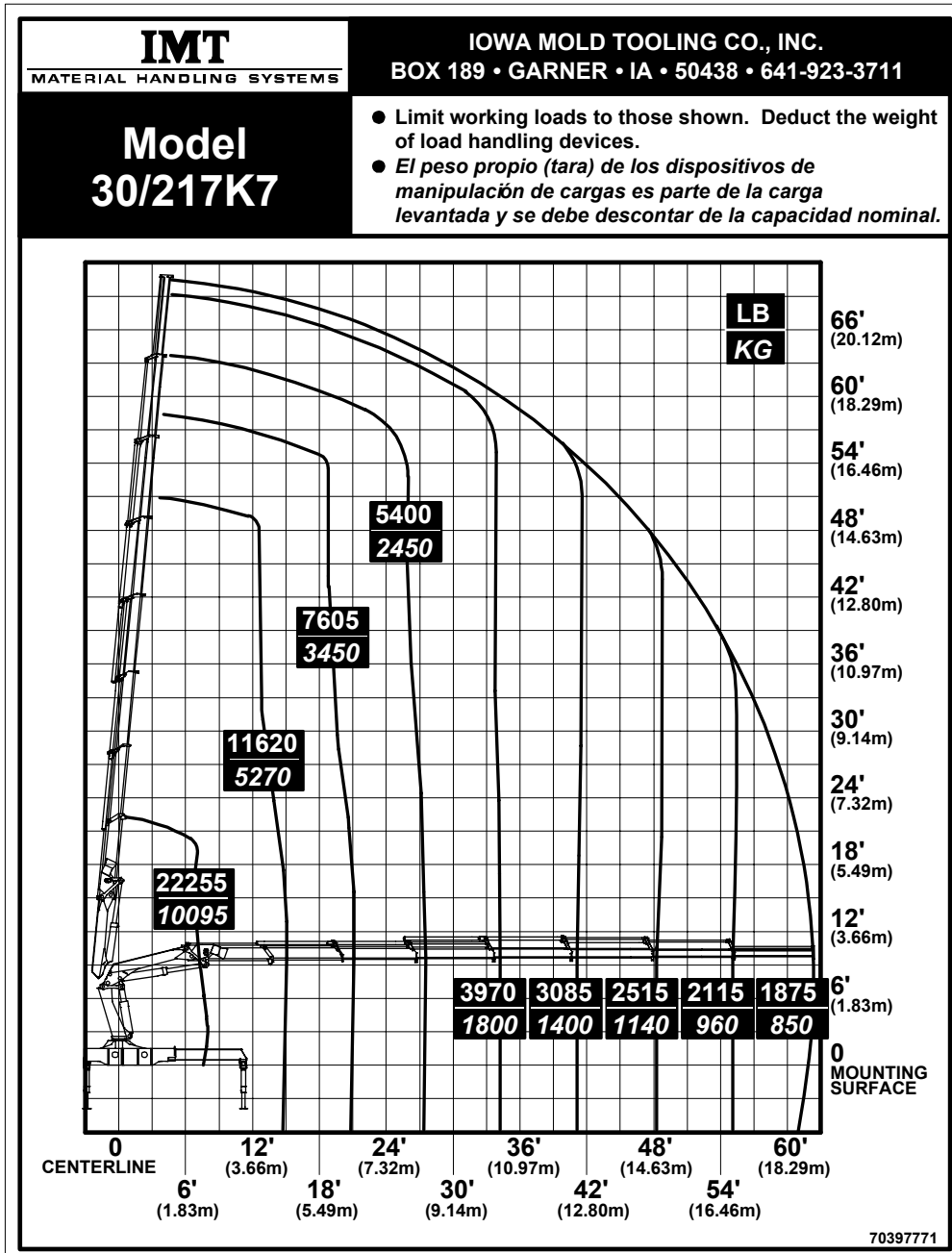
# 30/217K5 Capacity Chart



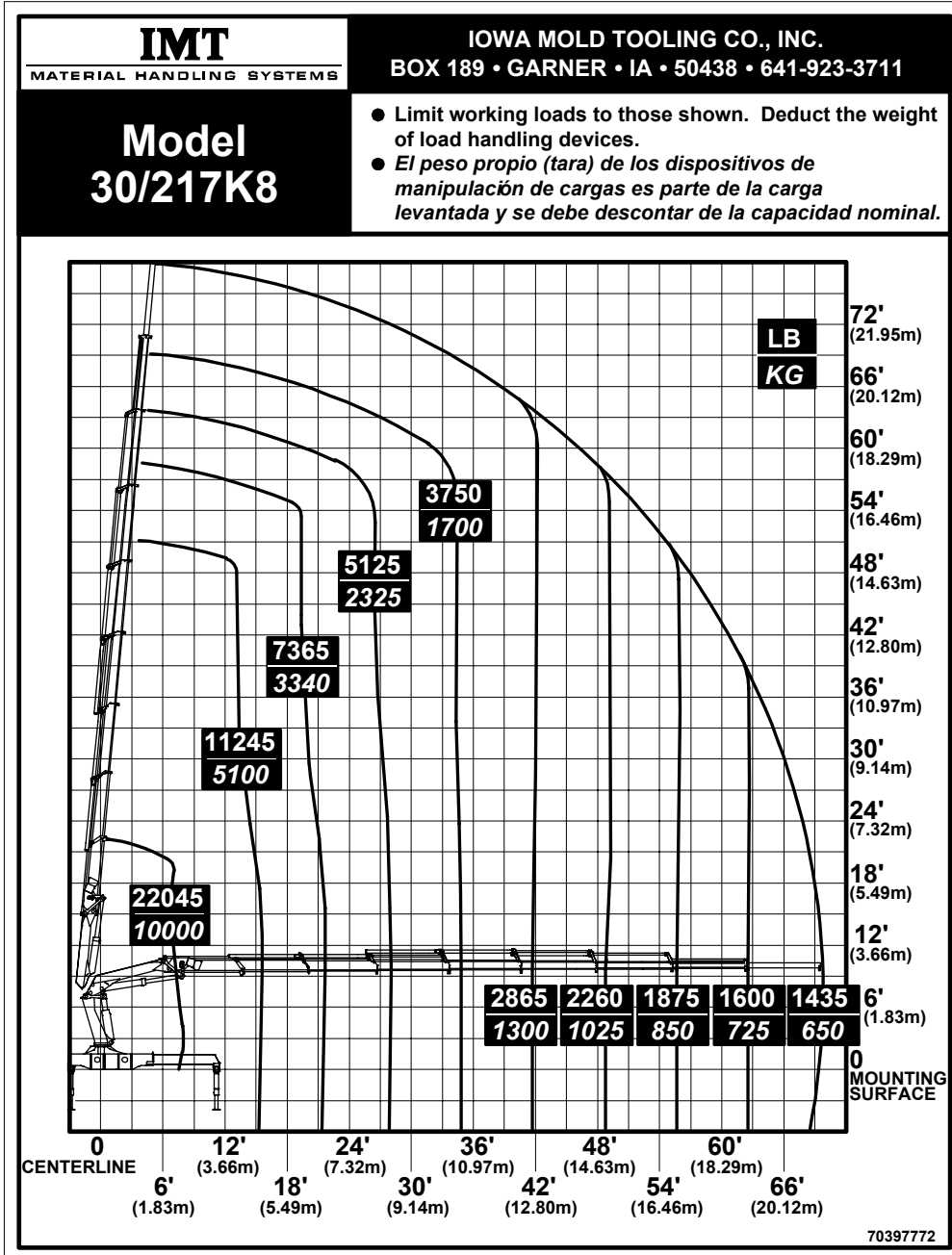
# 30/217K6 Capacity Chart



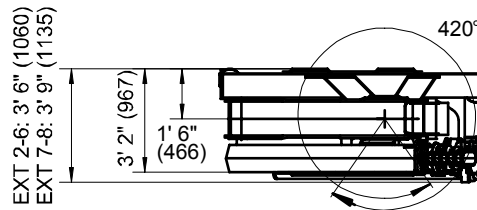
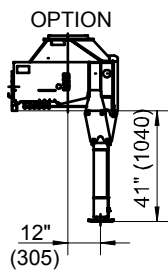
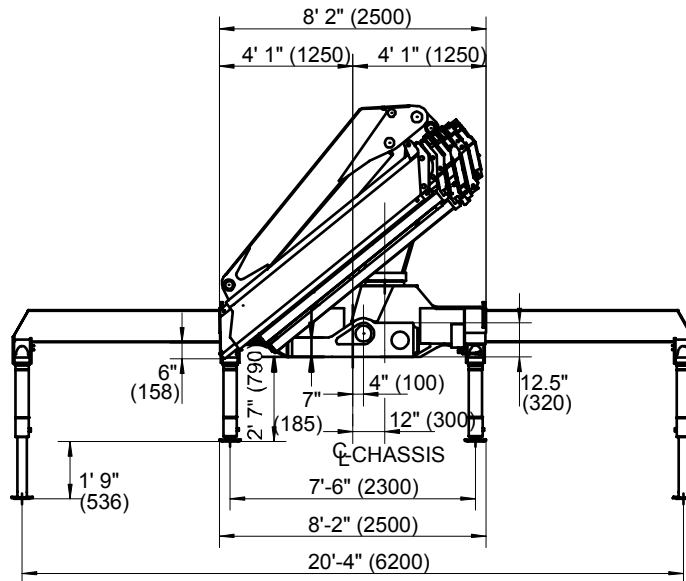
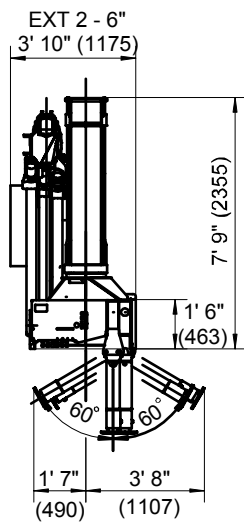
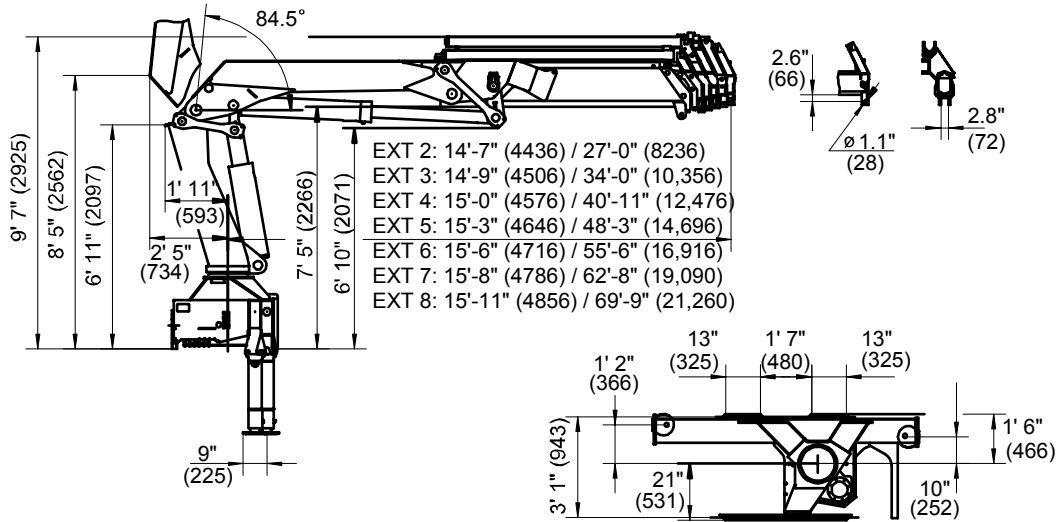
# 30/217K7 Capacity Chart



# 30/217K8 Capacity Chart



# 30/217 Dimensional Drawing



NOTE:  
ALL DIMENSIONS IN  
FEET & INCHES (mm).

# 30/217 Hydraulic Diagram

