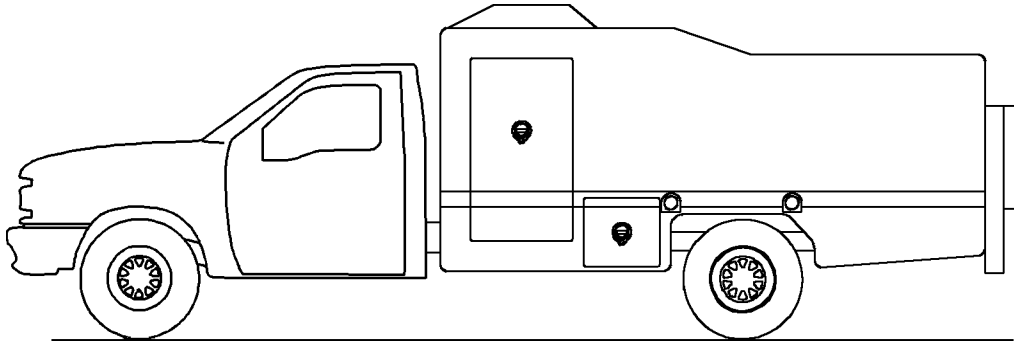




1999 Model 1296 Ag Service Body

PARTS AND SPECIFICATIONS

**Section 1 BODY SPECIFICATIONS
Section 2 REPLACEMENT PARTS**



IOWA MOLD TOOLING CO., INC.

BOX 189, GARNER, IA 50438-0189

TEL: 515-923-3711

TECHNICAL SUPPORT FAX: 515-923-2424

MANUAL PART NO: 99901155

PARTS ORDERING INFORMATION

Before placing an order, take the time to record the following information. This information should then be given to an IMT representative when placing your order.

BODY MODEL NUMBER:

BODY SERIAL NUMBER:

PART NUMBER, DESCRIPTION AND QUANTITY REQUIRED:

If left or right side is applicable, please specify.

Contact IMT at the following address:

**IOWA MOLD TOOLING CO., INC.
BOX 189, GARNER, IA 50438-0189
TEL: 515-923-3711
PRODUCT SUPPORT FAX: 515-923-2424**

**See Series 60 Compressor Manual
for complete installation and operation instructions.**

LIMITED WARRANTY

WARRANTY COVERAGE - Products manufactured by Iowa Mold Tooling Co., Inc. (IMT) are warranted to be free from defects in material and workmanship, under proper use, application and maintenance in accordance with IMT's written recommendations, instructions and specifications as follows:

1. Ninety (90) days; labor on IMT workmanship from the date of shipment to the end user.
2. One (1) year; original IMT parts from the date of shipment to the end user.

IMT's obligation under this warranty is limited to, and the sole remedy for any such defect shall be the repair or replacement (at IMT's option) of unaltered parts returned to IMT, freight prepaid, and proven to have such defect, provided such defect occurs within the above stated warranty period and is reported within fourteen (14) days of its occurrence.

IMPLIED WARRANTY EXCLUDED - This is the only authorized IMT warranty and is in lieu of all other express or implied warranties or representations, including any implied warranties of merchantability or fitness for any particular purpose or of any other obligations on the part of IMT.

ITEMS EXCLUDED - The manufacturer gives no warranty on any components purchased by the manufacturer, and such components as are covered only by the warranties of their respective manufacturers.

WARRANTY CLAIMS - Warranty claims must be submitted and shall be processed in accordance with IMT's established warranty claim procedure.

WARRANTY SERVICE - Warranty service will be performed by any IMT distributor authorized to sell new IMT products of the type involved or by any IMT Service Center authorized to service the type of product involved or by IMT in the event of direct sales made by IMT. At the time of requesting warranty service, the purchaser must present evidence of the date of delivery of the product. The purchaser shall pay any premium for overtime labor requested by the purchaser, any charge for making service calls and for transporting the equipment to the place where warranty work is performed.

WARRANTY VOIDED - All obligations of IMT under this warranty shall be terminated: (1) if service other than normal maintenance or normal replacement of service items is performed by someone other than an authorized IMT dealer, (2) if product is modified or altered in ways not approved by IMT.

PURCHASER'S RESPONSIBILITY - This warranty covers only defective material and workmanship. It does not cover depreciation or damage caused by normal wear, accident, improper protection in storage, or improper use. The purchaser has the obligation of performing the care and maintenance duties discussed in IMT's written recommendations, instructions and specifications. Any damage which results because of purchaser's failure to perform such duties shall not be covered by this warranty. The cost of normal maintenance and normal replacement of service items such as filters, belts, etc. shall be paid by the purchaser.

CONSEQUENTIAL DAMAGES - The only remedies the purchaser has in connection with the breach or performance of any warranty on IMT products are those set forth above. In no event will the dealer, IMT or any company affiliated with IMT, be liable for business interruptions, loss of sales and/or profits, rental or substitute equipment, costs of delay or for any other special, indirect, incidental or consequential losses, costs or damages.

REPRESENTATIONS EXCLUDED - IMT products are subject to no expressed, implied or statutory warranty other than herein set forth, and no agent, representative or distributor of the manufacturer has any authority to alter the terms of this warranty in any way whatsoever or to make any representations or promises, express or implied, as to the quality or performance of IMT products other than those set forth above.

CHANGE IN DESIGN - IMT reserves the right to make changes in design or improvements upon its products without imposing any obligation upon itself to install the same upon its products theretofore manufactured.

Effective January, 1985

This parts manual is provided to the user to assist in servicing the equipment. It is the property of Iowa Mold Tooling Co., Inc and, as such, may not be reproduced either whole or in part, whether by chemical, electrostatic, mechanical or photographic means without the expressed written permission of an officer of Iowa Mold Tooling Co., Inc. One manual is provided with each piece of new equipment and additional manuals may be obtained at a nominal price.



IOWA MOLD TOOLING CO., INC.

BOX 189, GARNER, IA 50438-0189

TEL: 515-923-3711

TECHNICAL SUPPORT FAX: 515-923-2424

The information within this manual has been compiled and checked but errors do occur. To provide our customers with a method of communicating those errors we have provided the Manual Change Request form below. In addition to error reporting, you are encouraged to suggest changes or additions to the manual which would be of benefit to you. We cannot guarantee that these additions will be made but we do promise to consider them. When completing the form, please write or print clearly. Submit a copy of the completed form to the address listed below.

MANUAL CHANGE REQUEST

DATE	PRODUCT MANUAL	MANUAL PART NO.
SUBMITTED BY		
COMPANY		
ADDRESS		
CITY, STATE, ZIP		
TELEPHONE		

ERROR FOUND

LOCATION OF ERROR (page no.): _____

DESCRIPTION OF ERROR: _____

REQUEST FOR ADDITION TO MANUAL

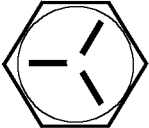

DESCRIPTION OF ADDITION: _____

REASON FOR ADDITION: _____

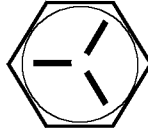

MAIL TO: IOWA MOLD TOOLING Co., Inc.
Box 189,
Garner IA 50438-0189
ATTN: Technical Publications

TORQUE DATA CHART

FINE THREAD BOLTS

SIZE (DIA-TPI)	BOLT DIA (INCHES)	TIGHTENING TORQUE			
		 SAE J429 GRADE 5		 SAE J429 GRADE 8	
		PLAIN (FT-LB)	PLATED (FT-LB)	PLAIN (FT-LB)	PLATED (FT-LB)
5/16-24	0.3125	19	14	27	20
3/8-24	0.3750	35	26	49	35
7/16-20	0.4375	55	41	78	58
1/2-20	0.5000	90	64	120	90
9/16-18	0.5625	120	90	170	130
5/8-18	0.6250	170	130	240	180
3/4-16	0.7500	300	225	420	315
7/8-11	0.8750	445	325	670	500
1-12	1.0000	645	485	995	745
1 1/8-12	1.1250	890	670	1445	1085
1 1/4-12	1.2500	1240	930	2010	1510
1-3/8-12	1.3750	1675	1255	2710	2035
1 1/2-12	1.5000	2195	1645	3560	2670

COARSE THREAD BOLTS

SIZE (DIA-TPI)	BOLT DIA (INCHES)	TIGHTENING TORQUE			
		 SAE J429 GRADE 5		 SAE J429 GRADE 8	
		PLAIN (FT-LB)	PLATED (FT-LB)	PLAIN (FT-LB)	PLATED (FT-LB)
5/16-18	0.3125	17	13	25	18
3/8-16	0.3750	31	23	44	33
7/16-14	0.4375	49	37	70	52
1/2-13	0.5000	75	57	105	80
9/16-12	0.5625	110	82	155	115
5/8-11	0.6250	150	115	220	160
3/4-10	0.7500	265	200	375	280
7/8-9	0.8750	395	295	605	455
1-8	1.0000	590	445	910	680
1 1/8-7	1.1250	795	595	1290	965
1 1/4-7	1.2500	1120	840	1815	1360
1-3/8-6	1.3750	1470	1100	2380	1780
1 1/2-6	1.5000	1950	1460	3160	2370

When using the torque data in the charts above, the following rules should be observed.

1. Bolt manufacturer's particular specifications should be consulted when provided.
2. Flat washers of equal strength must be used.
3. All torque measurements are given in foot-pounds. To convert to inch-pounds, multiply by 12.
4. Torque values specified are for bolts with residual oils or no special lubricants applied. If special lubricants of high stress ability, such as Never-Seez compound graphite and oil, molybdenum disulphite, colloidal copper or white lead are applied, multiply the torque values in the charts by the factor .90. The use of Loctite does not affect the torque values listed above.
5. Torque values for socket-head capscrews are the same as for Grade 8 capscrews.

WARNING

Anytime a gear-bearing bolt is removed, it must be replaced with a new bolt of the identical grade and size. Once a bolt has been torqued to 75% of its proof load and then removed, the torque coefficient may no longer be the same as when the bolt was new thus giving indeterminate clamp loads after torquing. Failure to replace gear-bearing bolts may result in bolt failure due to metal fatigue causing serious injury or DEATH.

IMT Value Plus PM Package Service Schedule

1296 AG SERVICE PACKAGES

PM KIT REQUIRED: VP6160A

TYPE OF SERVICE	MONTH											
	1	2	3	4	5	6	7	8	9	10	11	12
Change DAR60 rotary screw compressor oil filter						✘						✘
Change rotary compressor oil						✘						✘
Change rotary compressor coalescer filter												✘
Change rotary compressor air filter		✘		✘		✘		✘		✘		✘
Grease rotary compressor driveline	✘	✘	✘	✘	✘	✘	✘	✘	✘	✘	✘	✘
Change moisture separator filter						✘						✘
Drain moisture from rotary compressor oil tank sump	✘	✘	✘	✘	✘	✘	✘	✘	✘	✘	✘	✘
Change liftgate hydraulic oil												✘
Start new 12 month PM chart												✘

00001296:99901155: 19990115

VI

Daily checks include compressor fluid levels, compressor air intake indicator, and draining of moisture separator.

Weekly checks include greasing of compressor driveline.

Note: Package may have optional crane that may require additional Preventative Maintenance service.

Kit Includes: DAR60 Rotary Screw Air Compressor filter (1), oil filter (2), compressor oil (2 changes), air filters (6), and moisture separator filter (2).

Recommended for average equipment usage rate. Required crane and liftgate lubricants not included.

SECTION 1. SPECIFICATIONS

GENERAL SPECIFICATIONS	3
COMPARTMENT SPECIFICATIONS	3
STANDARD FEATURES	4
OPTIONAL EQUIPMENT	4
DIMENSIONAL DRAWING	4
WEIGHT DISTRIBUTION-F350	5
WEIGHT DISTRIBUTION-F450	6

1999 Model 1296 Ag Service Body

GENERAL SPECIFICATIONS

	STANDARD	
	IMT Model 1007	
CRANE FOR WHICH BODY IS DESIGNED		
CHASSIS CAB-TO-AXLE (CA)	84"	213.4 cm
CHASSIS GVWR	15,000 lbs	6805 kgs
BODY CUBIC CAPACITY	78 cubic feet	2.21 cubic meters
TIRE HAULING CAPACITY	Four (18.4x42)	Four (18.4x42)
AVAILABLE PAYLOAD	6315 lbs	2865 kgs
LIFTGATE CAPACITY	1600 lbs	725 kgs

COMPARTMENT SPECIFICATIONS

LEFT FRONT COMPARTMENT	63"H X 42"W X 23"D 35.2 cubic feet	160.0x106.7x58.4cm 1.00 cubic meter
RIGHT FRONT COMPARTMENT	63"H X 42"W X 23"D 35.2 cubic feet	160.0x106.7x58.4cm 1.00 cubic meter
LEFT LOWER COMPARTMENT	19"H X 16"W X 23"D 4.05 cubic feet	48.3x40.6x58.4cm .11 cubic meters
RIGHT LOWER COMPARTMENT	19"H X 16"W X 23"D 4.05 cubic feet	48.3x40.6x58.4cm .11 cubic meters

Note: Dimensions of compartments are nominal.



IOWA MOLD TOOLING CO., INC.

BOX 189, GARNER, IA 50438-0189

TEL: 515-923-3711

TECHNICAL SUPPORT FAX: 515-923-2424

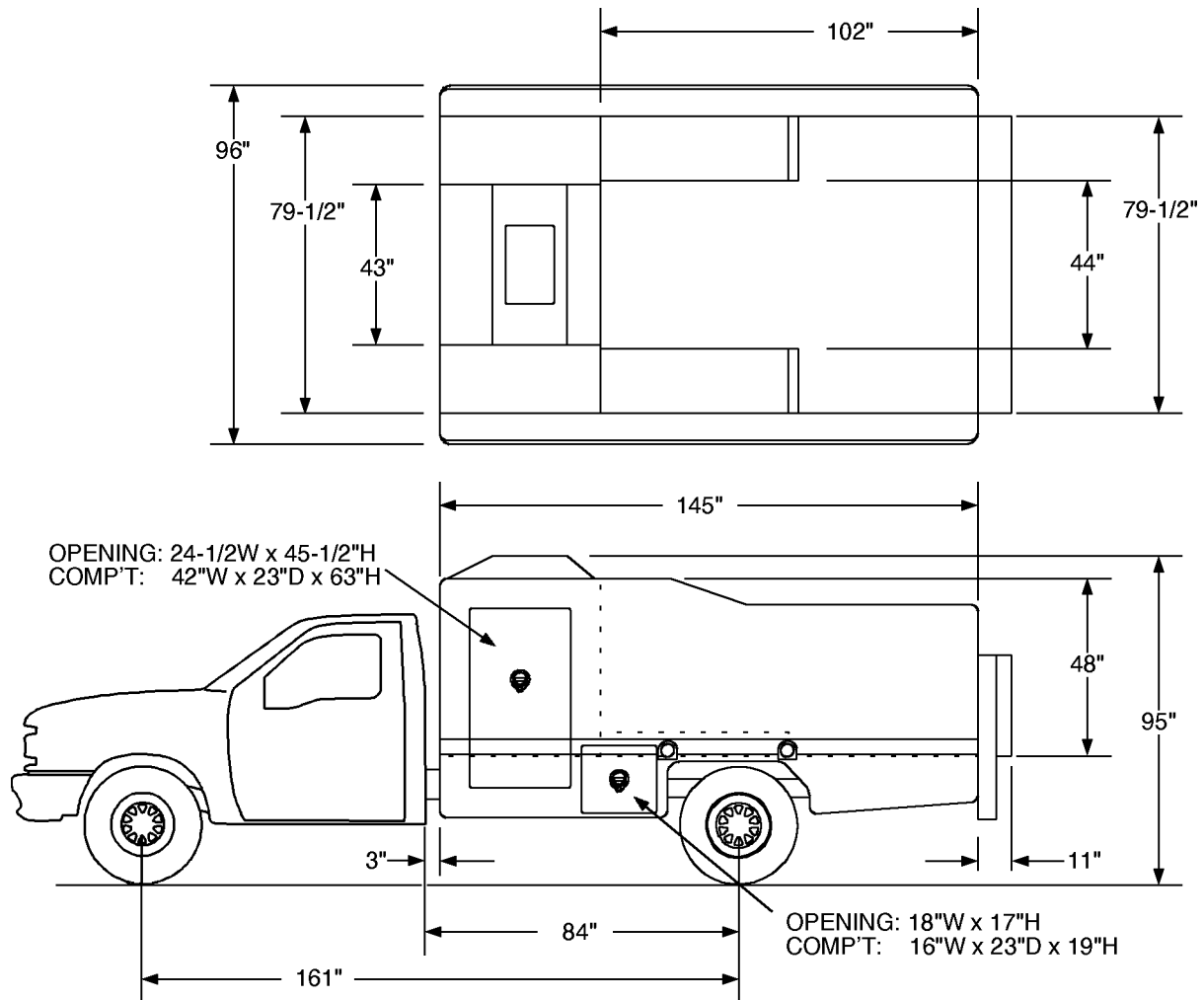
STANDARD FEATURES

- Amber beacon light.
- Two 12V floodlights.
- Two compartment lights.
- ICC safety kit.
- 22.5 gallon air receiver tank.

OPTIONAL EQUIPMENT

- Cab caddy.
- Hour meter
- Back-up alarm.
- Running boards.
- Bug deflector.
- 3/8" x 35' hose reel.
- Tubeless truck inflator hookup.
- Dual 1/2" airline coupler plumbing.
- 15 gallon, galvanized pressurized water tank.
- Liftgate side rail and tire stop.
- Two-bar fold-up tire inflation cage with body installed carrying bracket and 6' inflation hose.
- Customer identification.

IMT reserves the right to change specifications and design without notice.



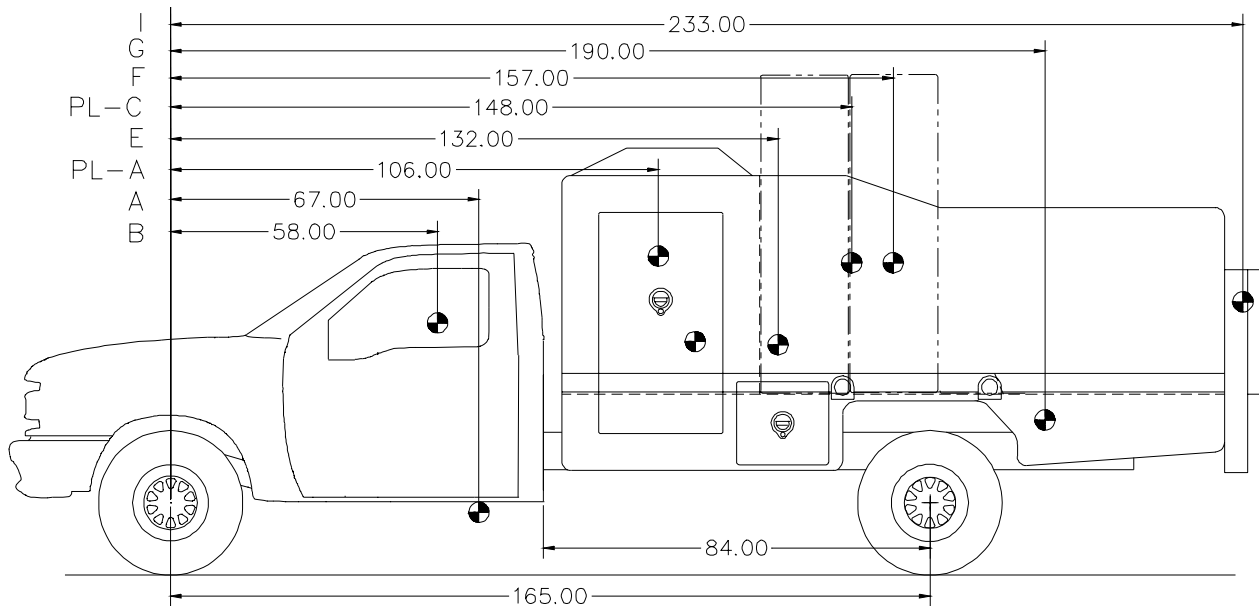
WEIGHT DISTRIBUTION

1296 Fiberglass Ag Service Series F350

CHASSIS MODEL	F350
CHASSIS MODEL YEAR	1999
CHASSIS MANUFACTURER	FORD
WHEELBASE	165"
CAB-TO-AXLE	84"
GVWR (LBS)	12500
FRONT AXLE RATING (LBS)	4850
REAR AXLE RATING (LBS)	8600

LOCATION	COMPONENT DESCRIPTION	TOTAL WEIGHT (LBS)	WEIGHT FRONT AXLE (LBS)	WEIGHT REAR AXLE (LBS)
	CHASSIS WEIGHT - STD EQUIP/OIL/WATER	5970	3770	2200
F	1296 FIBERGLASS BODY	1090	53	1037
I	LOADGATE	690	-284	974
A	DAR60P COMP+PTO	247	147	100
E	0.5"X50' HOSEREEL	76	15	61
	ASSEMBLY HARDWARE	130	63	67
	SUBTOTAL	8203	3764	4439
	TOTAL REMAINING GVW	4297	1086	4161
PL-A	CALCIUM CHLORIDE OR WATER	772	276	496
PL-C	CARGO PAYLOAD AT SPECIFIED LOCATION	490	50	440
G	REAR FUEL TANK - 36 GALLONS	252	-38	290
B	DRIVER	250	162	88
	REMAINING PAYLOAD	2533	286	2247
	TOTAL UNIT WEIGHT - WITH SPECIFIED LOAD	12500	4500	8000

NOTE: Legal limits for this truck are 64 gal. of calcium chloride or 91 gal. of water.



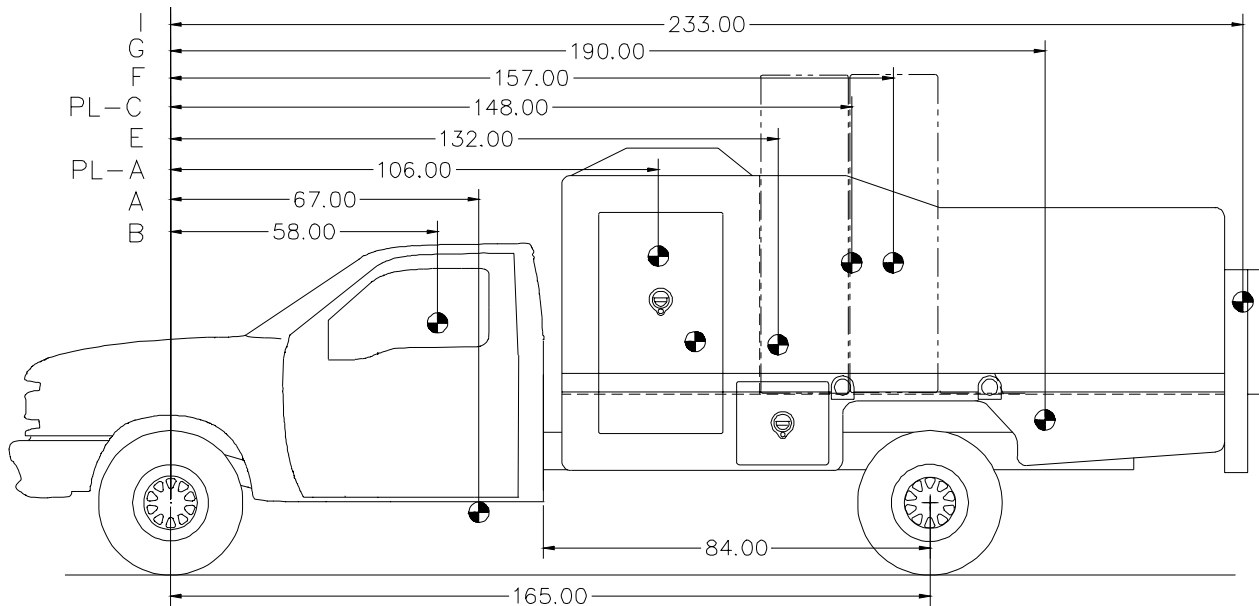
WEIGHT DISTRIBUTION

1296 Fiberglass Ag Service Series F450

CHASSIS MODEL	F450
CHASSIS MODEL YEAR	1999
CHASSIS MANUFACTURER	FORD
WHEELBASE	165"
CAB-TO-AXLE	84"
GVWR (LBS)	15000
FRONT AXLE RATING (LBS)	5790
REAR AXLE RATING (LBS)	10880

LOCATION	COMPONENT DESCRIPTION	TOTAL WEIGHT (LBS)	WEIGHT FRONT AXLE (LBS)	WEIGHT REAR AXLE (LBS)
	CHASSIS WEIGHT - STD EQUIP/OIL/WATER	6650	4020	2630
F	1296 FIBERGLASS BODY	1090	53	1037
I	LOADGATE	690	-284	974
A	DAR60P COMP+PTO	247	147	100
E	0.5"X50' HOSEREEL	76	15	61
	ASSEMBLY HARDWARE	130	63	67
	SUBTOTAL	8883	4014	4869
	TOTAL REMAINING GVW	6117	1776	6011
PL-A	CALCIUM CHLORIDE OR WATER	772	276	496
PL-C	CARGO PAYLOAD AT SPECIFIED LOCATION	490	50	440
G	REAR FUEL TANK - 36 GALLONS	252	-38	290
B	DRIVER	250	162	88
	REMAINING PAYLOAD	4353	536	3817
	TOTAL UNIT WEIGHT - WITH SPECIFIED LOAD	15000	5000	10000

NOTE: Legal limits for this truck are 64 gal. of calcium chloride or 91 gal. of water.



SECTION 2. REPLACEMENT PARTS

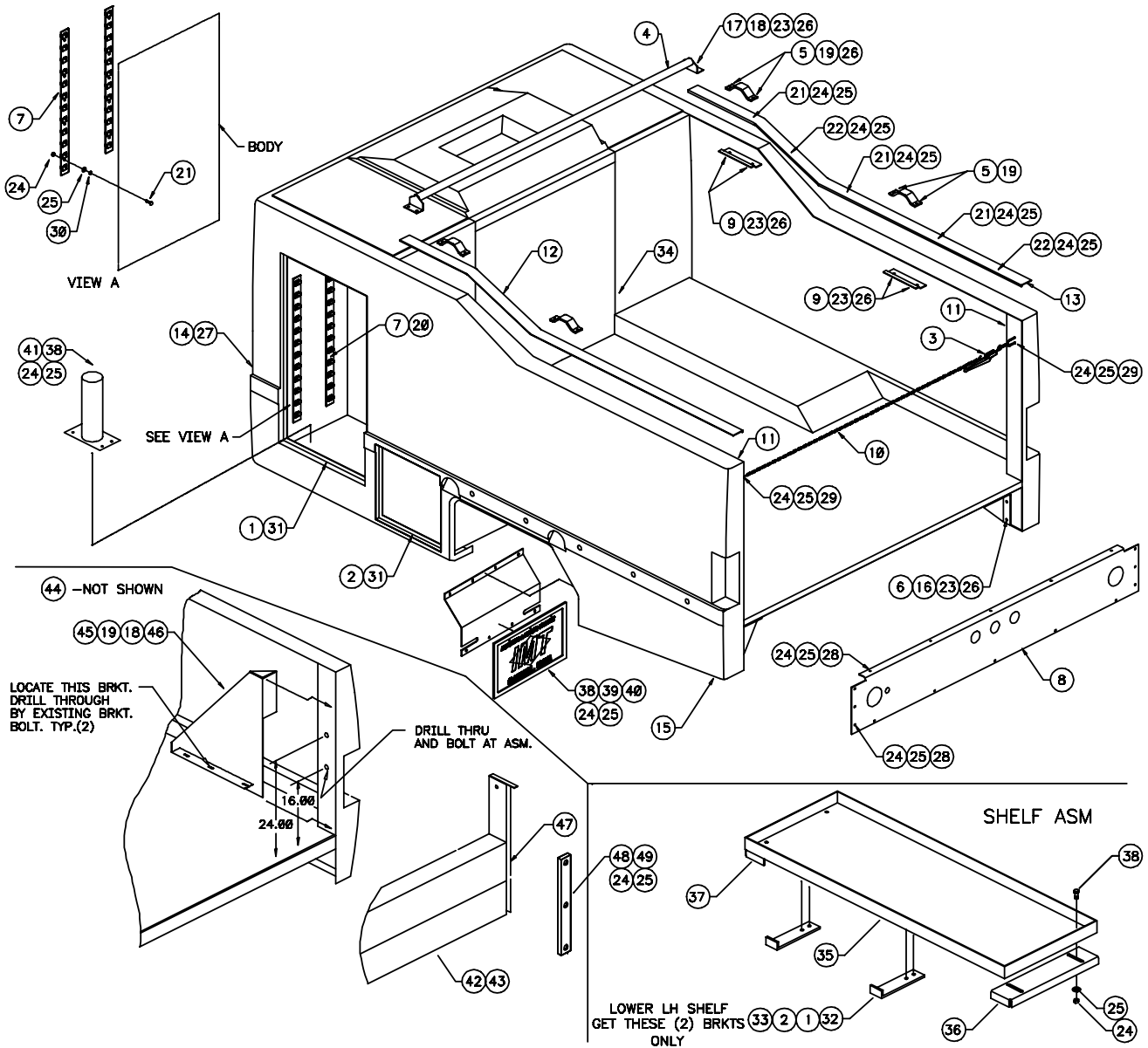
BODY W/SERIES 60 COMPRESSOR (41714893-1)	3
BODY W/ SERIES 60 COMPRESSOR (41714893-2)	4
BODY W/ SERIES 60 COMPRESSOR (41714893-3)	5
BODY W/ SERIES 60 COMPRESSOR (41714893-4)	6
BODY W/ SERIES 60 COMPRESSOR (41714893-5)	7
CHASSIS PREP-BODY W/ SERIES 60 COMPRESSOR-'99 FORD CHASSIS (41714894-1)	8
CHASSIS PREP-BODY W/ SERIES 60 COMPRESSOR-'99 FORD CHASSIS (41714894-2)	9
INSTALLATION-BODY W/SERIES 60 COMPRESSOR-'99 FORD CHASSIS (41714896)	10
DRIVESHAFT ASM (70008W)	11
ELECTRICAL INSTALLATION-BODY W/ SERIES 60 COMPRESSOR (41714895-1)	12
ELECTRICAL INSTALLATION-BODY W/ SERIES 60 COMPRESSOR (41714895-2)	13
ELECTRICAL INSTALLATION-BODY W/ SERIES 60 COMPRESSOR (41714895-3)	14
ELECTRICAL INSTALLATION-BODY W/ SERIES 60 COMPRESSOR (41714895-4)	15
ELECTRICAL INSTALLATION-BODY W/ SERIES 60 COMPRESSOR (41714895-5)	16
CONTROL BOX (51713793)	17
DECAL KIT (95714897)	18

**BODY W/SERIES 60 COMPRESSOR
(41714893-1)**

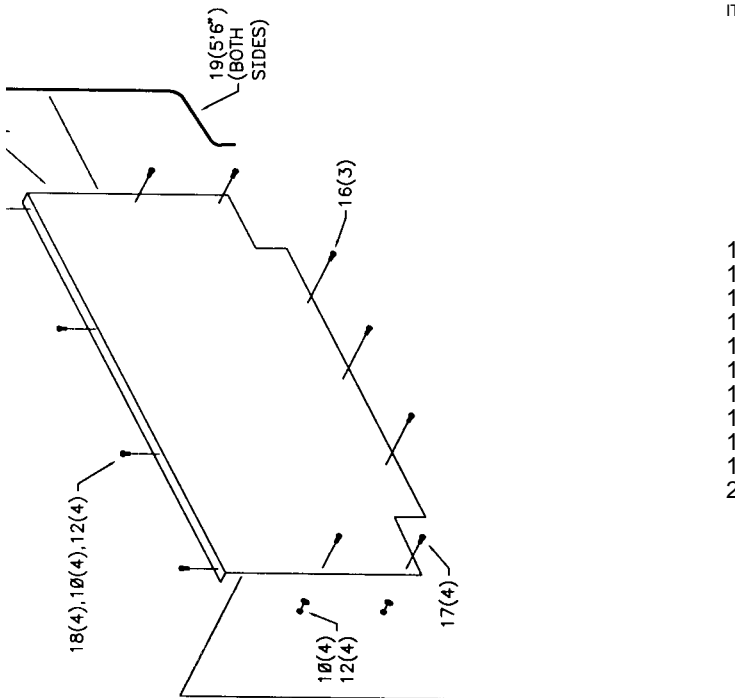
1.	72060004	CAP SCR 1/4-20X1 HHGR5	4
2.	72062104	NUT 1/4-20 LOCK	4
3.	52706007	CHAIN/BINDER	1
4.	52707902	RAIL	1
5.	60025114	LIFT BRACKET	4
6.	60025722	BRACE	2
7.	60025724	HANGER BRACKET	8
8.	60025725	PANEL-REAR	1
9.	60025920	BACK-LIFT BRKT	4
10.	60112361	CHAIN 80"	1
11.	60113671	SUPPORT	2
12.	60250048	RAIL PROTECTION-LH	1
13.	60250049	RAIL PROTECTION-RH	1
14.	70029119	SERIAL NUMBER PLACARD	1
15.	70034303	SHELL W/DOORS	1
16.	72060047	CAP SCR 3/8-16X1-1/4 HHGR5	4
17.	72060048	CAP SCR 3/8-16X1-1/2 HHGR5	2
18.	72060049	CAP SCR 3/8-16X1-3/4 HHGR5	2
19.	72060050	CAP SCR 3/8-16X2 HHGR5	18
20.	72060833	SCR 5/16-18X3/4 THRDCTG	12
21.	72060989	CARRIAGE BOLT 5/16-18X1	18
22.	72060991	CARRIAGE BOLT 5/16-18X1-1/2	4
23.	72062103	NUT 3/8-16 LOCK	26
24.	72062109	NUT 5/16-18 LOCK	77

CONTINUED ON FOLLOWING PAGE

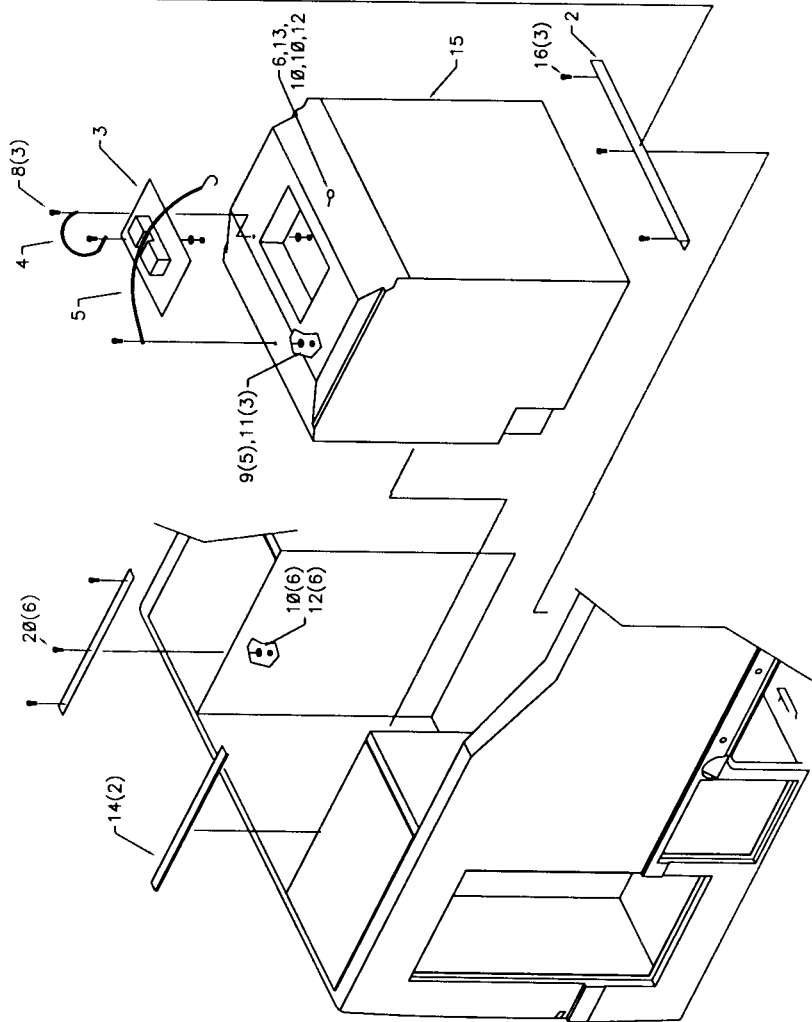
25.	72063002	WASHER 5/16 WRT	97
26.	72063003	WASHER 3/8 WRT	26
27.	72066340	POP RIVET 1/8X3/8GRIP	2
28.	72601435	CARRIAGE BOLT 5/16-18X1-1/4	11
29.	72661341	U-BOLT 5/16-18X1-3/4X1	2
30.	76392598	WASHER 5/16 BONDED	12
31.	89393607	WEATHERSTRIP 5/8X1/2	38FT
32.	60113337	HOSE BRACKET	2
33.	72063001	WASHER 1/4 WRT	8
34.	89392881	WEATHERSTRIP 5/8	10FT
35.	60025670	SHELF 14X39 ADJ	4
36.	60025671	END-ADJ SHELF-RH	4
37.	60025672	END-ADJ SHELF-LH	4
38.	72060025	CAP SCR 5/16-18X1 HHGR5	36
39.	60025701	EXT PLATE-MUD FLAP	2
40.	76393799	MUD FLAP	2
41.	52709004	HOLDER-TIRE BARS	1
42.	60250360	PANEL-LOADGATE DECAL	1
43.	72066349	POP RIVET .19X.50GRIP	14
44.	52710688	MTG BRACKET-LOADGATE-LH	1
45.	52710687	MTG BRACKET-LOADGATE-RH	1
46.	72063005	WASHER 3/8 WRT	10
47.	70733154	LOADGATE	1
48.	60030309	WEAR PAD	2
49.	72060025	CAP SCR 5/16-18X1 HHGR5	6
50.	72063002	WASHER 5/16 WRT	6
51.	72062109	NUT 5/16-18 LOCK	6



**BODY W/ SERIES 60 COMPRESSOR
(41714893-2)**



ITEM	PART NO.	DESCRIPTION	QTY
1.	70034319	DIVIDER-TANK	1
2.	60250116	ANGLE	1
3.	70034148	LID-TANK	1
4.	70039432	STRAP 9"	1
5.	70391361	STRAP 15"	1
6.	72060966	EYE BOLT 5/16-18X3-3/8	1
7.	77044094	CLAMP 1/2	1
8.	72060006	CAP SCR 1/4-20X1-1/2 HHGR5	3
9.	72063001	WASHER 1/4 WRT	5
10.	72063002	WASHER 5/16 WRT	16
11.	72062104	NUT 1/4-20 LOCK	3
12.	72062109	NUT 5/16-18 LOCK	15
13.	72062001	NUT 5/16-18 HEX	1
14.	60250157	RAIL-PROTECTION	2
15.	70034304	TANK-355GAL CHLORIDE	1
16.	72060833	SCR 5/16-18X3/4 THRDCTG	6
17.	72060989	CARRIAGE BOLT 5/16-18X1	4
18.	72601435	CARRIAGE BOLT 5/16-18X1-1/4	4
19.	89392881	WEATHERSTRIP 5/8	11FT
20.	72060991	CARRIAGE BOLT 5/16-18X1-1/2	6

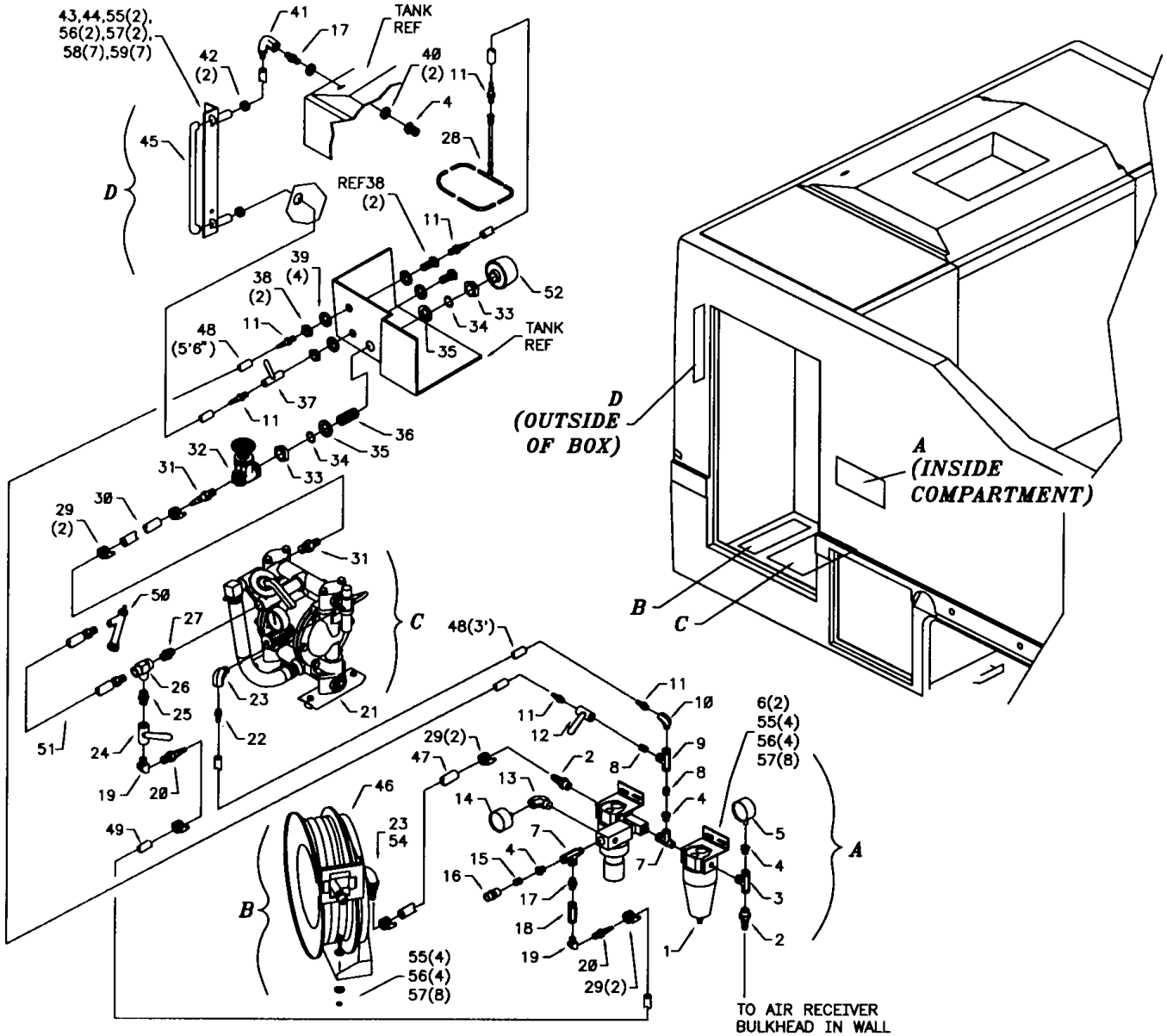


**BODY W/ SERIES 60 COMPRESSOR
(41714893-3)**

ITEM	PART NO.	DESCRIPTION	QTY
1.	70073439	MOISTURE SEP/REG/OILER	1
2.	72531547	BARB NIPPLE 1/2MPT 3/4HOSE	2
3.	72531961	TEE 1/2NPT BRS	1
4.	72531812	REDUCER BUSHING 1/2-1/4NPT	4
5.	70048036	PRESSURE GAUGE 300PSI	1
6.	70141473	MTG BRACKET	2
7.	72531991	STREET TEE 1/2NPT STL	2
8.	72053517	ADAPTER 1/4MPT 1/4MPT HEX	2
9.	72053610	TEE 1/4NPT STL	1
10.	72053523	STREET ELBOW 1/4NPT 90°	1
11.	72532552	HOSE FITTING 1/4 1/4	6
12.	73054122	BALL VALVE 1/4NPT	1
13.	72531131	STREET ELBOW 1/4NPT 90°	1
14.	70048015	PRESSURE GAUGE 300PSI	1
15.	72532733	PIPE NIPPLE 1/4NPT X CLOSE	1
16.	72532021	QUICK DISCONNECT 1/4FPT	1
17.	72533022	PIPE NIPPLE 1/2NPT X CLOSE	2
18.	73054676	VALVE-CHECK INLINE	1
19.	72053591	STREET ELBOW 1/8NPT 90°	2
20.	72053457	BARB NIPPLE 1/2MPT 1/2HOSE	2
21.	51714060	TIRE PUMPER	1
22.	72533569	HOSE FITTING 1/4 3/8	1
23.	72531132	STREET ELBOW 3/8NPT 90°	1
24.	73054192	BALL VALVE 1/2NPT	1
25.	72053726	ADAPTER 3/4MPT 1/2MPT HEX	1
26.	72053555	TEE 3/4NPT STL	1

CONTINUED ON FOLLOWING PAGE

27.	72053558	ADAPTER 3/4MPT 3/4MPT HEX	1
28.	51701525	MIXER ASM	1
29.	72066000	HOSE CLAMP SAE#12	4
30.	89039188	AIR HOSE 1X2 300PSI RED	1.5FT
31.	72532470	BARB NIPPLE 1MPT 1HOSE	2
32.	73054001	GATE VALVE 1NPT BRS	1
33.	72532718	NUT 1 LOCK NPSC	2
34.	7Q072210	O-RING 3/4X1X1/8	2
35.	76392173	WASHER-LEATHER	2
36.	72532719	PIPE NIPPLE 1X2-1/2 BRS	1
37.	73054108	SHUT OFF VALVE 1/4M/FPT	1
38.	72532721	BULKHD COUPLING 1/4X1-1/2	2
39.	70034223	WASHER 3/4 PVC	4
40.	72063005	WASHER 1/2 WRT	2
41.	72532720	ELBOW 1/4FPT 3/8POLYFLO 90°	1
42.	76392613	GROMMET 5/8	2
43.	60025490	BRACKET-SIGHT GAUGE	1
44.	70392700	DECAL-CALIBRATION 360GAL	1
45.	89034221	TUBE 3/8 PLASTIC	8FT
46.	70732095	HOSE REEL	1
47.	89392349	HOSE 3/4 300PSI	3FT
48.	89392146	HOSE 1/4 250PSI PUSHLOCK	8.5FT
49.	89039176	HOSE-AIR 1/2 250PSI RED	5FT
50.	79085286	EJECTOR	1
51.	51701520	HOSE ASM-CHL 18' W/FTGS	1
52.	70731509	SCREEN-STRAINER	18FT
54.	72532794	BARB NIPPLE 3/8MPT 3/4HOSE	1
55.	72060004	CAP SCR 1/4-20X1 HHGR5	10
56.	72062104	NUT 1/4-20 LOCK	10
57.	72063001	WASHER 1/4 WRT	18
58.	72066349	POP RIVET .19X1/2 GRIP	7
59.	72066535	HOSE CLAMP 3/8 VINYL CVR	7



00001296: 41714893.04:19980515

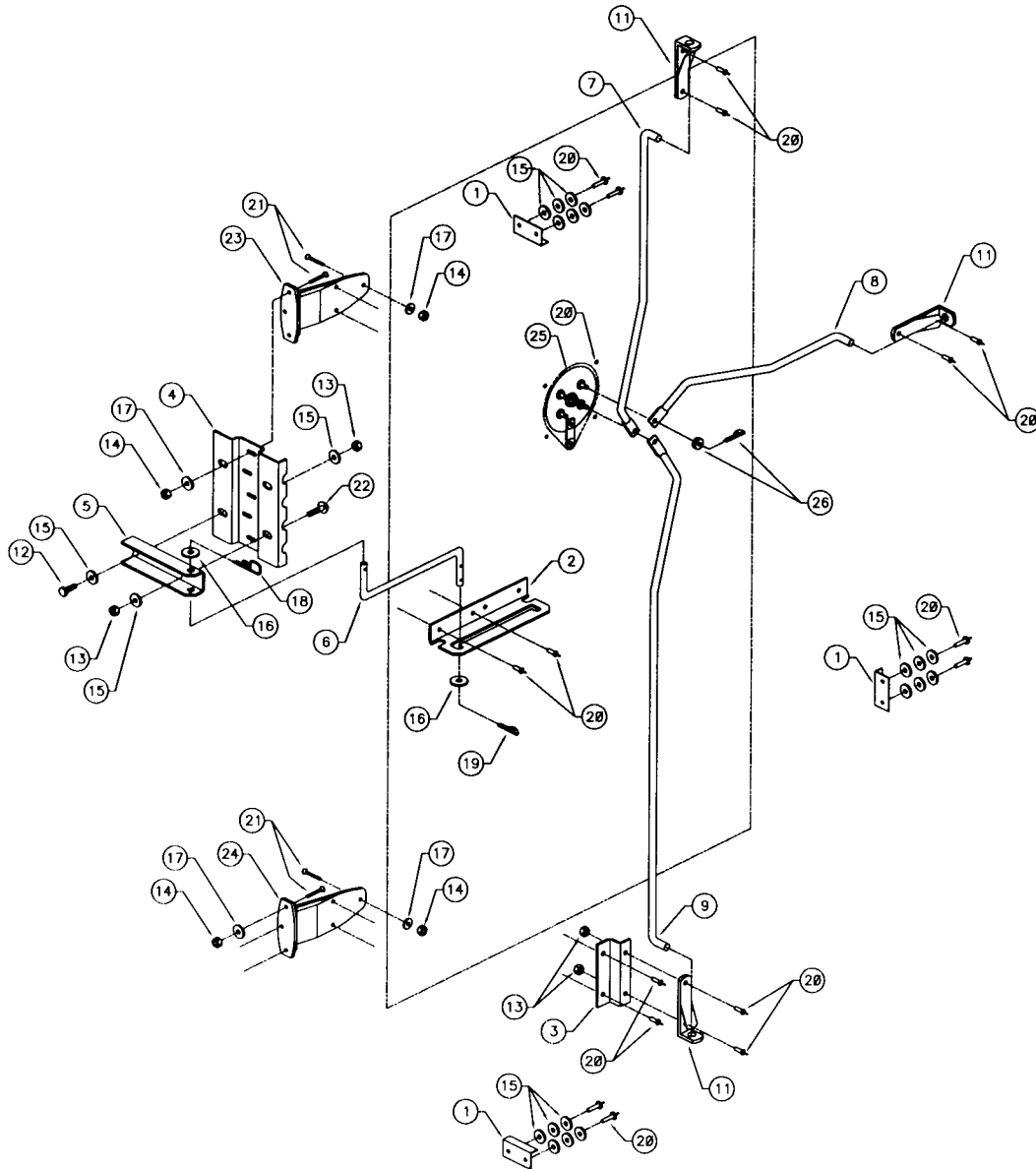
**BODY W/ SERIES 60 COMPRESSOR
(41714893-4)**

ITEM	PART NO.	DESCRIPTION	QTY
1.	60015016	WEAR PAD	3
2.	60025726	SLIDE-DOOR STOP	1
3.	60025727	BRACKET-ROD GUIDE	1
4.	60025728	BRACKET-ROD DOOR STOP	1
5.	60025730	BRACKETROD DOOR STOP	1
6.	60110183	ROD-DOOR STOP 7"	1
7.	60111904	ROD-DOOR LATCH 17-7/8"	1
8.	60111905	ROD-DOOR LATCH 12-3/4"	1
9.	60111906	ROD-DOOR LATCH 26-5/8"	1
10.	70034320	DOOR 47-1/4X26-3/8	REF
11.	70143131	ROD GUIDE 3/8	3

CONTINUED ON FOLLOWING PAGE

2-6

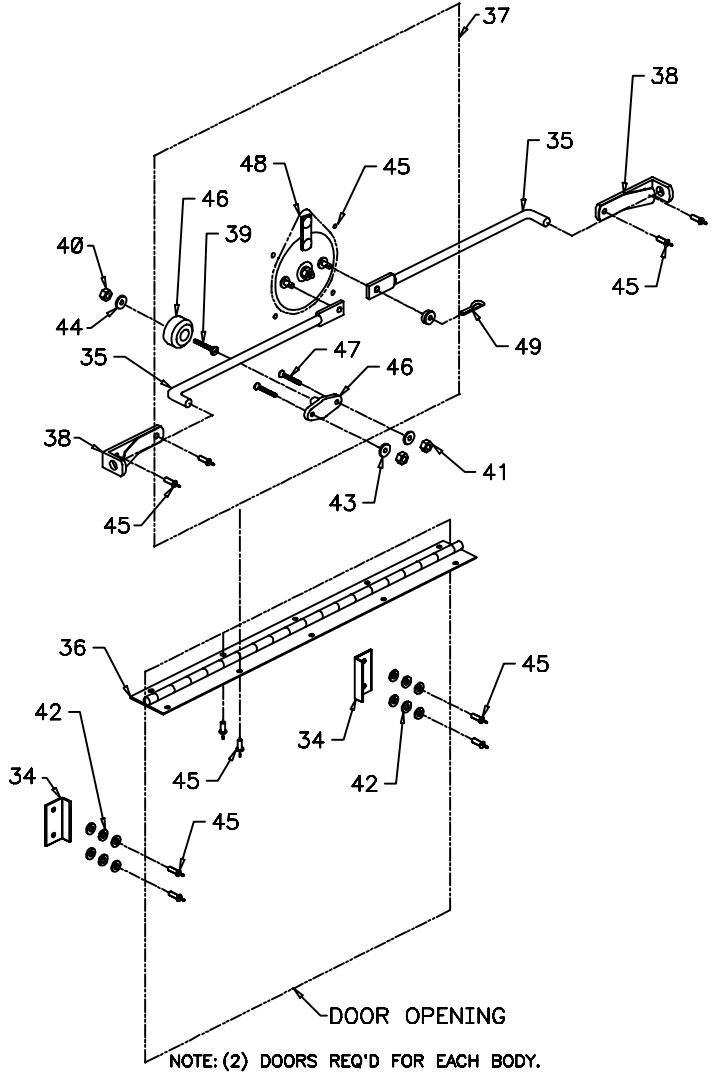
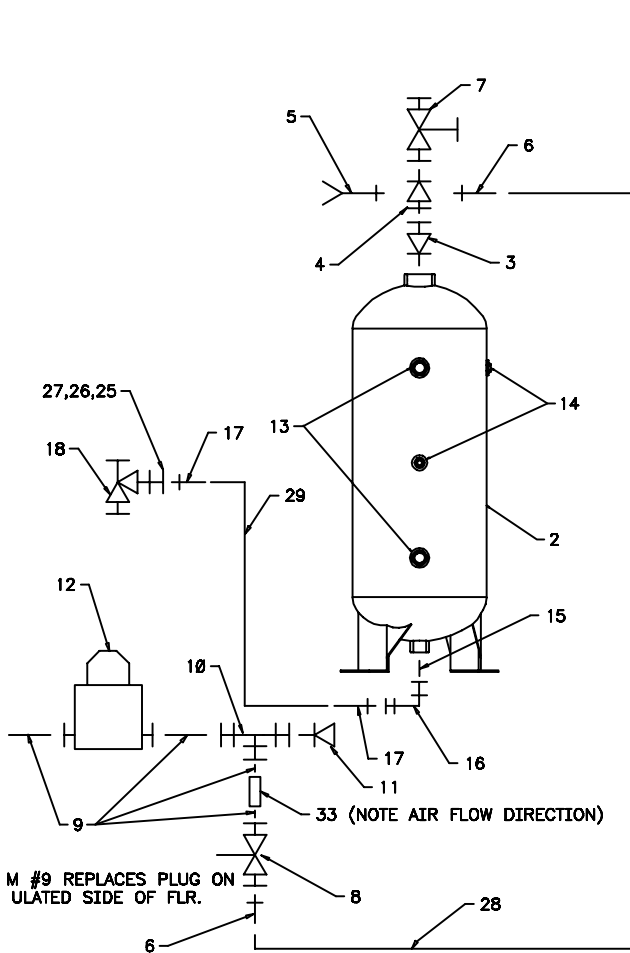
12.	72060002	CAP SCR 1/4-20X3/4 HHGR5	1
13.	72062104	NUT 1/4-20 LOCK	4
14.	72062123	NUT #10-24 LOCK SS	12
15.	72063001	WASHER 1/4 WRT	21
16.	72063184	WASHER 5/16 FLAT SS	2
17.	72063181	WASHER #10 WRT SS	12
18.	72066141	HAIR PIN 1/16	1
19.	72066168	COTTER PIN .09 X 3/4	1
20.	72066349	POP RIVET .19X1/2GRIP SS	20
21.	72601008	STOVE BOLT #10-24X1-1/2	12
22.	72601436	CARRIAGE BOLT 1/4-20X1 SQNK	1
23.	72661170	HINGE-RH CHROME	1
24.	72661171	HINGE-LH CHROME	1
25.	72661265	LATCH-4 STUD	1
26.	94732135	KIT-2PT LATCH	2



**BODY W/ SERIES 60 COMPRESSOR
(41714893-5)**

1.	52707368	TANK BRACKET	1
2.	70073107	TANK-15 GAL	1
3.	72533124	REDUCER BUSHG 2 -1-1/4NPT	1
4.	60113842	ADAPTER	1
5.	72054296	SAFETY VALVE 60PSI	1
6.	72053459	BARB NIPPLE 1/4MPT 1/4HOSE	2
7.	73054130	GATE VALVE 1-1/4NPT BRS	1
8.	73054723	BALL VALVE 1/4NPT W/DRAIN	1
9.	72532733	PIPE NIPPLE 1/4NPT X CLOSE	4
10.	72531959	TEE 1/4NPT BRS	1
11.	72531721	PIPE PLUG 1/4NPT	1
12.	70048147	AIR REGULATOR	1
13.	72053405	PIPE PLUG 3/4NPT SH	2
14.	72053403	PIPE PLUG 3/8NPT SH	2
15.	72053198	PIPE NIPPLE 1NPT X CLOSE	1
16.	72532279	REDUCER ELBOW 1 - 1/2NPT	1
17.	72053457	BARB NIPPLE 1/2MPT 1/2HOSE	2
18.	72533121	HOSE BIB 1/2	1
19.	72060048	CAP SCR 3/8-16X1-1/2 HHGR5	4
20.	72063003	WASHER 3/8 WRT	12
21.	72062103	NUT 3/8-16 HEX	6
22.	72060027	CARR BOLT 5/16-18X1-1/2 HHGR5	2

23.	72063050	WASHER 5/16 LOCK	2
24.	72062001	NUT 5/16 HEX	2
25.	72060643	MACH SCR #10-24X1-1/2 RDHD	2
26.	72063123	WASHER #10 WRT	4
27.	72062106	NUT #10-24 LOCK	2
28.	89392146	HOSE 1/4 200PSI	1
29.	89392602	HOSE 1/2 200PSI	1
30.	601106492	TANK STRAP	1
31.	72060047	CAP SCR 3/8-16X1-1/4 HHGR5	2
32.	73054587	CHECK VALVE 1/4	1
33.	60015016	WEAR PAD	2
34.	60111867	DOOR ROD 9-3/8"	2
35.	60111868	PIANO HINGE 19"	1
36.	70034321	DOOR 19-3/8X18-1/2	REF
37.	70143131	ROD GUIDE 3/8	2
38.	72601593	CAP SCR 1/4-20X1-1/2 FLHD SS	1
39.	72062194	NUT 1/4-20 LOCK SS	1
40.	72062123	NUT #10-24 LOCK SS	2
41.	72063001	WASHER 1/4 WRT	12
42.	72063181	WASHER #10 WRT SS	2
43.	72063183	WASHER 1/4 FLAT SS	1
44.	72066349	POP RIVET .19X.50GRIP SS	22
45.	72066376	PLUNGER/SOCKET	1
46.	72601008	STOVE BOLT #10-24X1-1/2	2
47.	72661305	LATCH-2PT W/LOCK	1
48.	94732135	KIT-2PT LATCH	1

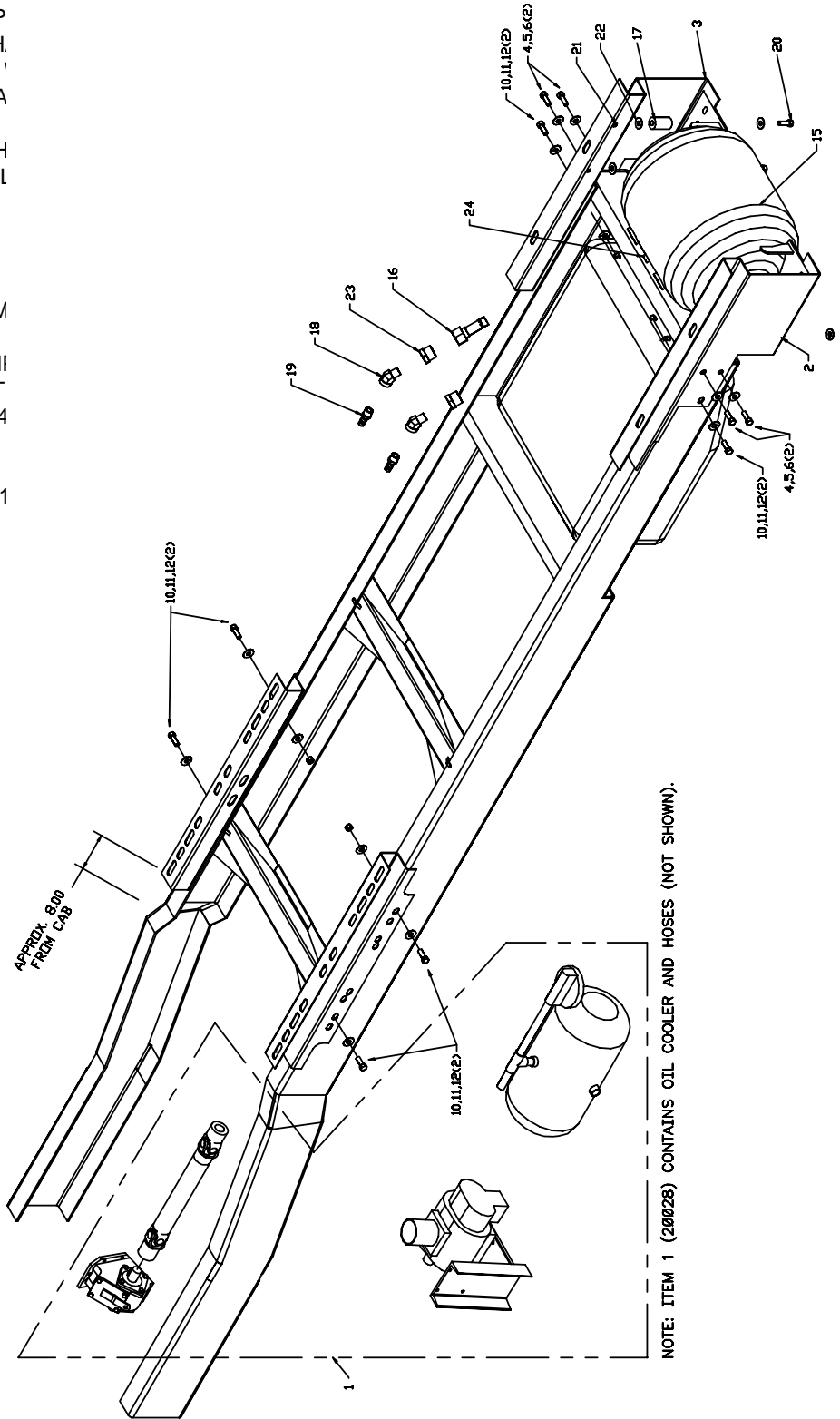


NOTES: DRILL .93 HOLE THROUGH FIBERGLASS FOR ITEM #17,#18
 USE ITEM #25,#26,#27 FOR MOUNTING ITEM #18.
 USE ITEM #22,#23,#24 FOR MOUNTING ITEM #1.
 USE ITEM #19,#20,#21 FOR MOUNTING ITEM #2.
 USE ITEM #20,#21,#32 FOR MOUNTING ITEM #31 TO #1.

**CHASSIS PREP-BODY W/ SERIES 60
COMPRESSOR-'99 FORD CHASSIS
(41714894-1)**

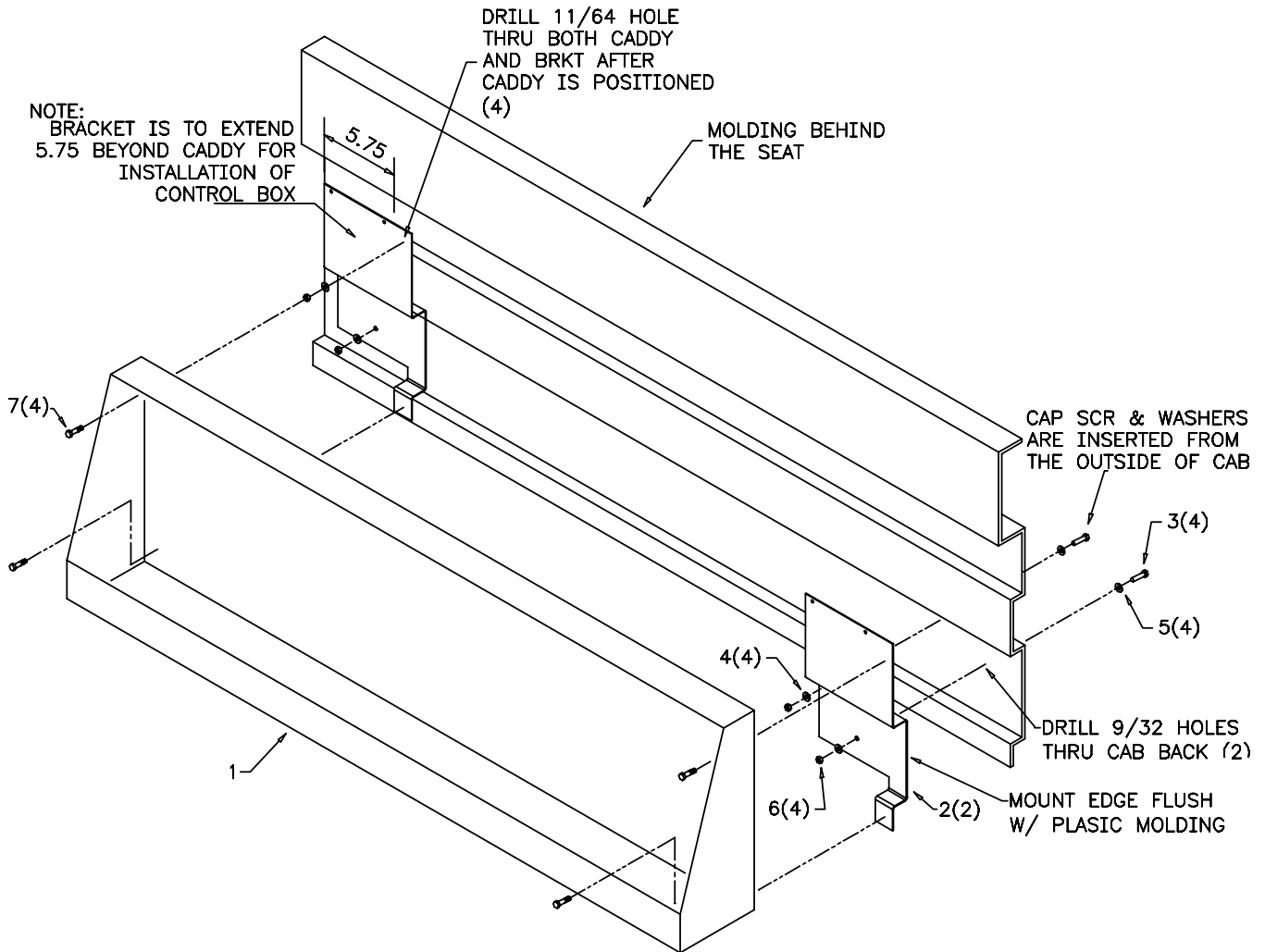
CONTINUED ON FOLLOWING PAGE

ITEM	PART NO.	DESCRIPTION	QTY
1.	20028	SERIES 60 COMPRESSOR	1
2.	52714872	BRACKET-LEFT REAR	1
3.	52714871	BRACKET-RIGHT REAR	1
4.	72601144	CAP SCR 9/16-12X2 HHGR8	4
5.	72062275	NUT 9/16-12 HEX TOP	
6.	72063117	WASHER 9/16 FLAT H.	
7.	70073147	FIRE EXTINGUISHER 1	
8.	70073146	KIT-REFLECTOR TRIA	
9.	52714843	BRACKET-FRONT	
10.	72060174	CAP SCR 5/8-11X2 HH	
11.	72062233	NUT 5/8-11 HEX TOP L	
12.	72063119	WASHER 5/8 FLAT	
13.	70733305	DEFLECTOR	
14.	93029598	RUNNING BOARD	
15.	70731788	AIR TANK 22.5GAL	
16.	73540054	CHECK VALVE 60CFM	
17.	70144807	SPRING	
18.	72053535	STREET ELBOW 3/4NI	
19.	72053458	BARB NIPPLE 3/4MPT	
20.	72060920	CAP SCR 1/2-13X3-1/4	
21.	72062080	NUT 1/2-13 LOCK	
22.	72063005	WASHER 1/2 WRT	
23.	72531836	REDUCER BUSHING 1	
24.	73054032	SAFETY VALVE 1/4	



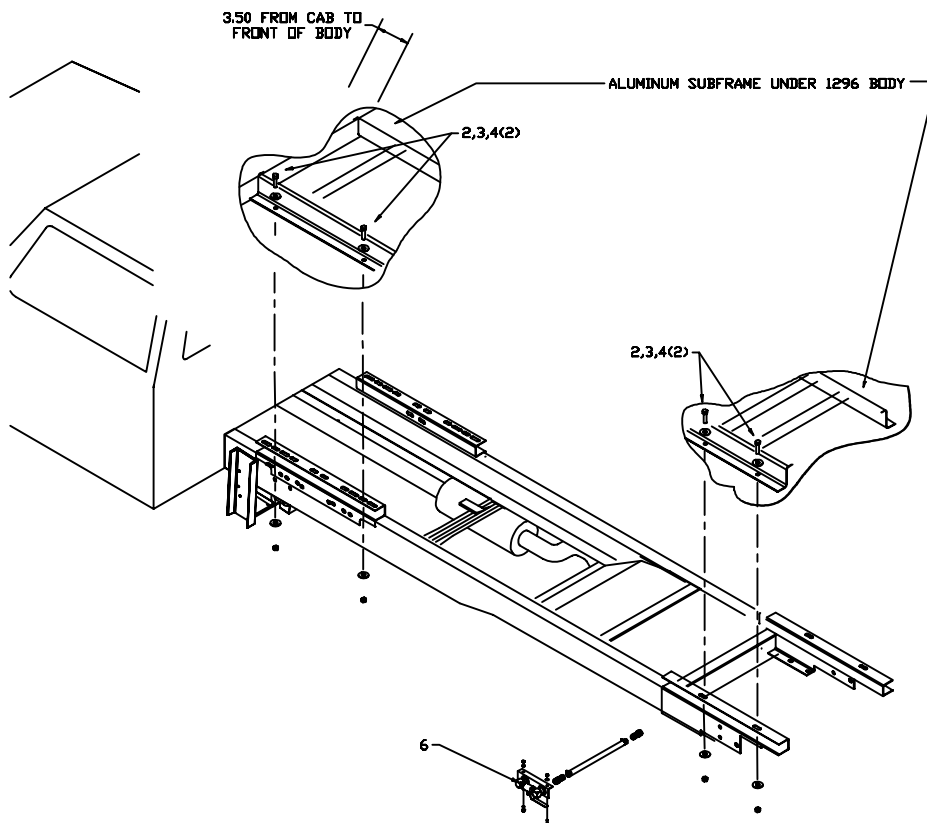
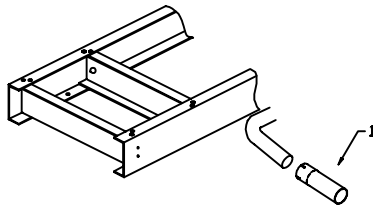
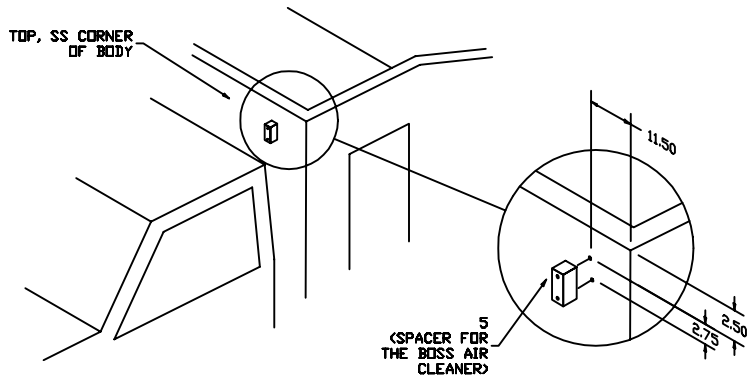
**CHASSIS PREP-BODY W/ SERIES 60
COMPRESSOR-'99 FORD CHASSIS
(41714894-2)**

ITEM	PART NO.	DESCRIPTION	QTY
1.	70733084	CAB CADDY	1
2.	60121009	MTG BRACKET	2
3.	72060005	CAP SCR 1/4-20X1-1/4 HHGR5	4
4.	72063001	WASHER 1/4 WRT	4
5.	76392820	WASHER 1/4 BONDED	4
6.	72062104	NUT 1/4-20 LOCK	4
7.	72061004	SHT MTL SCR #14X3/4 SLTHEX	4



**INSTALLATION-BODY W/SERIES 60
COMPRESSOR-'99 FORD CHASSIS
(41714896)**

ITEM	PART NO.	DESCRIPTION	QTY
1.	70143334	EXHAUST CONNECTOR	1
2.	72060174	CAP SCR 5/8-11X2 HHGR5	8
3.	72062233	NUT 5/8-11 HEX TOP LK GR8	8
4.	72063119	WASHER 5/8 FLAT HARD	16
5.	60121084	SPACER BLOCK	1
6.	51709358	DRAIN ASM	1



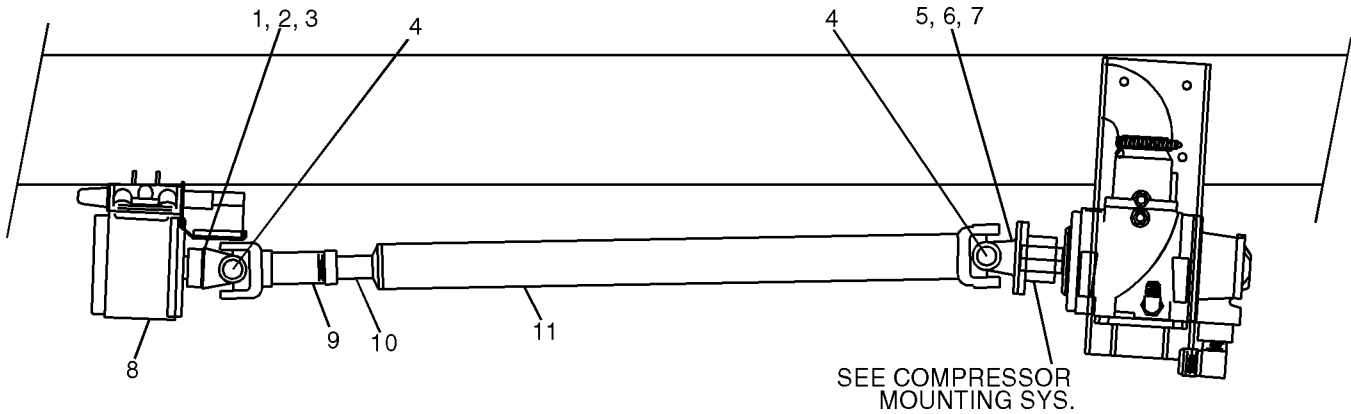
00001296: 70008W.01:19980515
DRIVESHAFT ASM (70008W)

2-11

WARNING

The installer of the driveline must inspect the final position of the driveline to determine whether its location provides sufficient protection to an operator, or other personnel, from hazards associated with a rotating driveline. If protection is insufficient, the installation of a guard is required. If you are unsure of methods to guard a rotating driveline, call Iowa Mold Tooling Co., Inc. for instructions. Failure to do so may result in serious injury or death.

ITEM	PART NO.	DESCRIPTION	QTY
1.	300164-533	END YOKE	1
2.	973406-050	SET SCREW W/HOLE 3/8-16	1
3.	301486	WIRE-SET SCR	1
4.	300154-153	U-JOINT	2
5.	300196-329	FLANGE YOKE	1
6.	929406-125	BOLT 3/8X1-1/4UNF GR8	4
7.	925706-198	NUT 3/8 LOCK	4
8.	300159-074	PTO	1
9.	300248-093	FILLER BLOCK	1
10.	300247-006	STUD KIT	1
11.	300155-128	SLIP ASM 1-3/8	1
12.	300198-1312	SHAFT 1	1
13.	300197-017	TUBE-YOKE ASM	1



⚠ DANGER

CONTACT WITH A ROTATING DRIVELINE
 WILL CAUSE
DEATH OR SERIOUS INJURY
KEEP AWAY

- Keep clear of rotating drive shaft.
- Never work on or near an installed power take-off or driveline with the engine running.

70392891

00001296: 41714895.01:19980515

**ELECTRICAL INSTALLATION-BODY W/
SERIES 60 COMPRESSOR (41714895-1)**

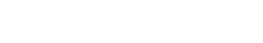
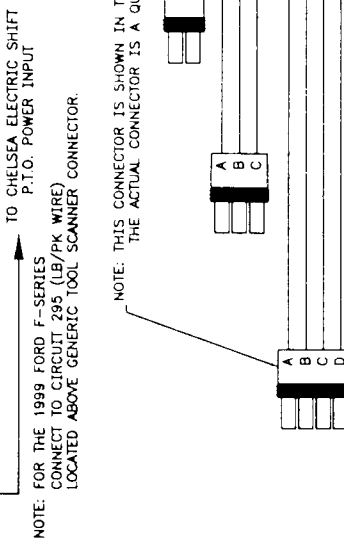
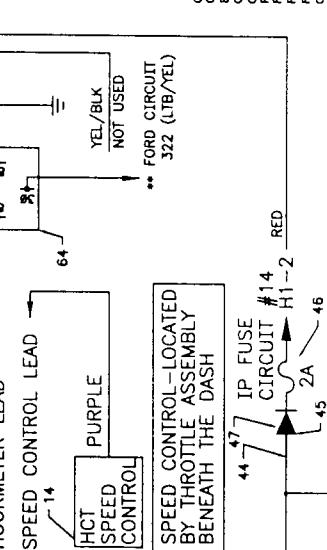
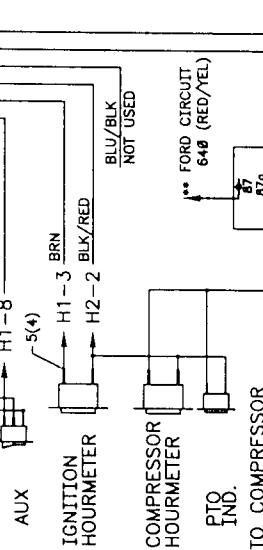
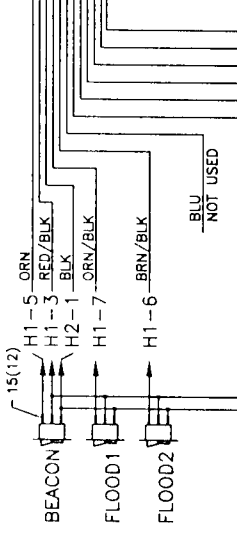
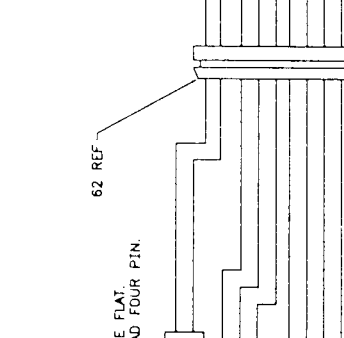
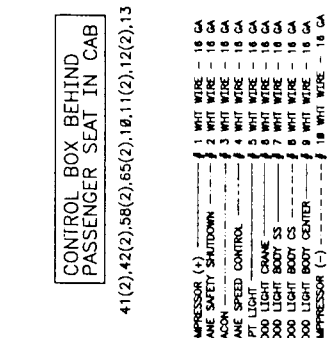
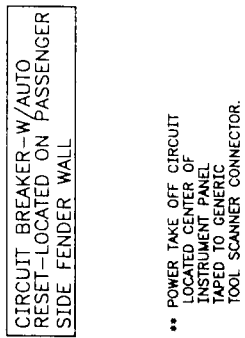
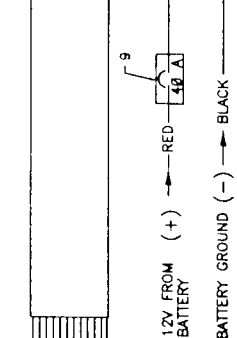
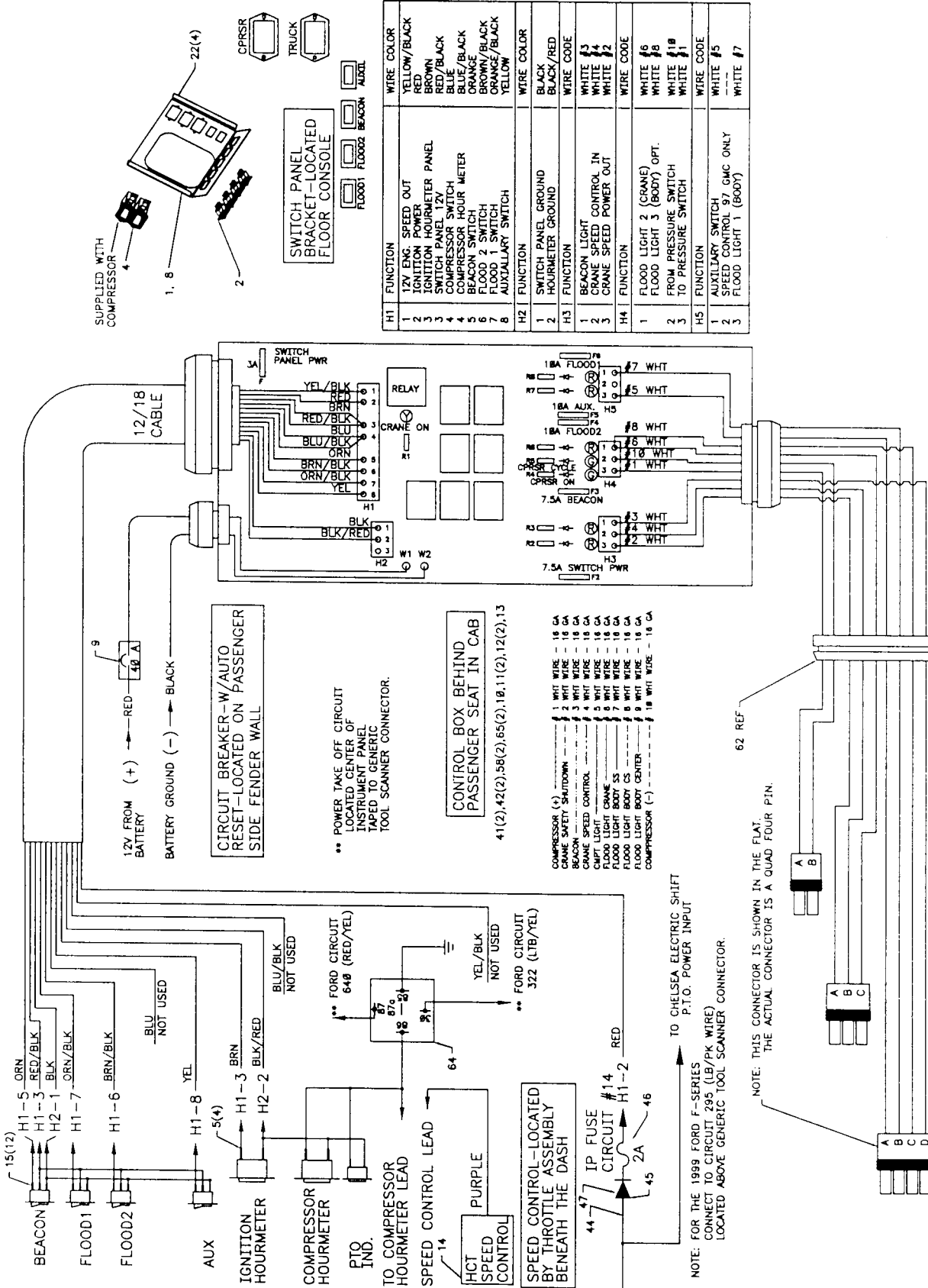
2-12

CONTINUED ON FLOWING PAGE

ITEM	PART NO.	DESCRIPTION	QTY
1.	60121244	SWITCH BRACKET	1
2.	77041386	SWITCH-SGL POLE LIGHTED	4
4.	70073155	METER-HOUR	1
5.	77040186	TERMINAL 1/4FSLPON 16-14GA	4
6.	60121243	SWITCH BRACKET	1
8.	70394978	DECAL-SWITCH PANEL	1
9.	77044672	CIRCUIT BREAKER 40A	1
10.	60121009	BRACKET-CONTROL BOX	1
11.	72060614	MACH SCR #8-32X1 RDHD	2
12.	72062207	NUT #8-32 HEX LOCK	2
13.	51713793	CONTROL BOX (SEE DWG)	1
14.	70733297	IDLE CONTROL	1
15.	77040389	TERM-1/4FSLPON 16-14GA	12
16.	77044694	WIRE HARNESS	1
17.	77040384	LIGHT-COMPARTMENT	2
18.	72661491	CLIP-CONDUIT CLAMP	12
19.	76392227	RUBBER GROMMET 3/8	2
20.	76393636	RUBBER GROMMET 2	2
21.	60250473	BRACKET-CPMT LIGHT	2
22.	72061100	SCR #10X1/2 HH SLFTAP	4
23.	77040026	FLOODLIGHT 12V	2
24.	89044330	LOOM 5/8 ID SPLIT	25FT
25.	77044689	CONNECTOR 1-WAY	1
26.	72061004	SHT MTL SCR #14X3/4 SLT HX	3
27.	77040020	HORN-BACKUP	1
28.	77040000	TERMINAL #10STUD 16-14GA	4
29.	77044756	HARNESS	1
30.	77044757	HARNESS	1
31.	70394069	SEAL-CABLE	1
33.	77044550	TERMINAL F 20-18GA	1
35.	70145522	RETAINER-SPRING CLIP	20
36.	77040290	LIGHT-CLEAR AMBER	2
37.	89044056	LOOM 5/16 ID SPLIT	17FT
38.	77040009	TERMINAL 3/8STUD #2CABLE	1

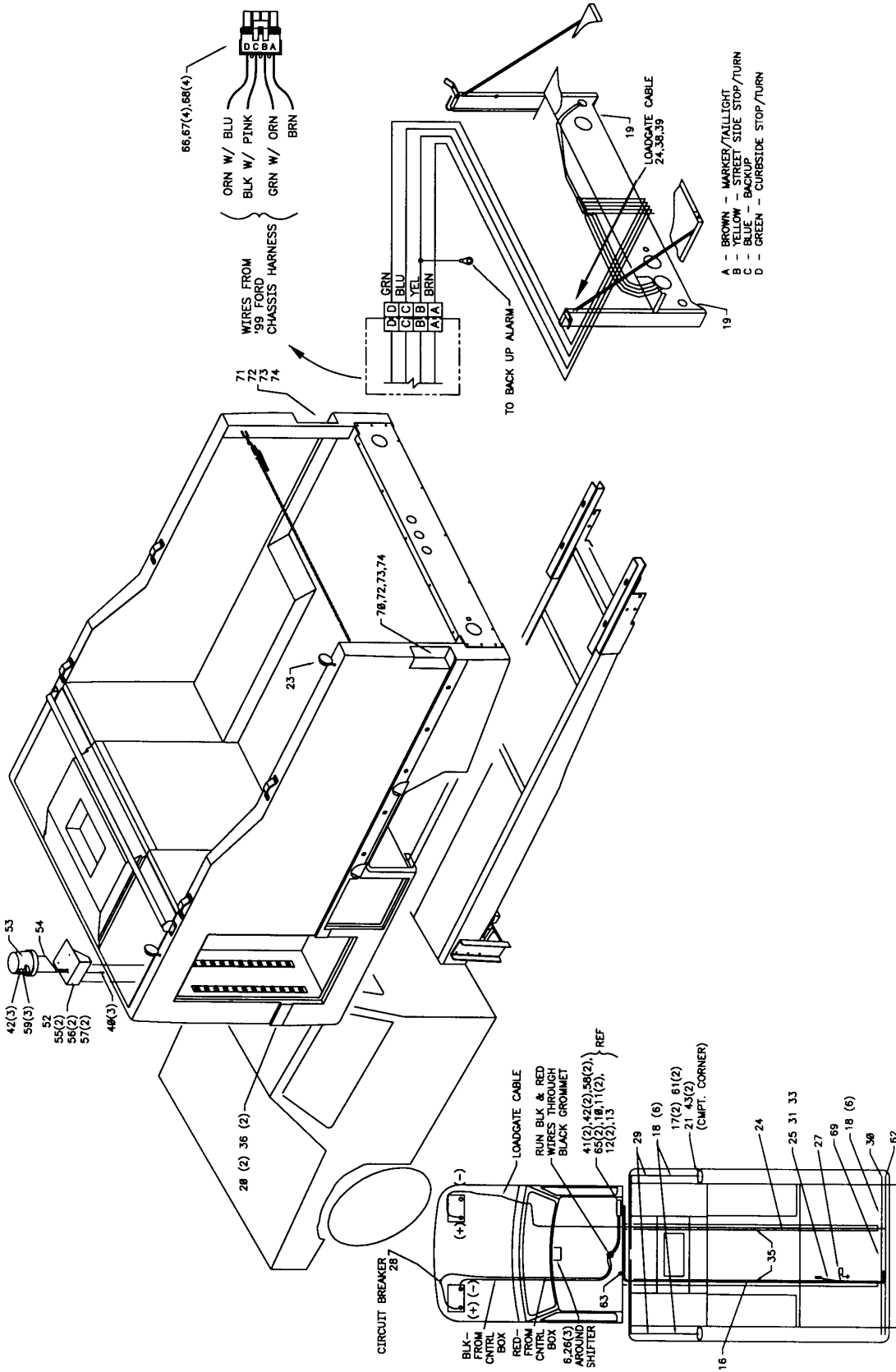
39.	89394234	TUBE-HEAT SHRINK 1/2X6	1
40.	72060004	CAP SCR 1/4-20X1 HHGR5	3
41.	72063001	WASHER 1/4 WRT	4
42.	72062104	NUT 1/4-20 LOCK	7
43.	77040047	TERMINAL 1/4MSLPON 16-14GA	1
44.	77044556	DIODE 2.2AMP/274V	1
45.	77044693	FUSE AGC 2AMP	1
46.	77044691	FUSE HOLDER	1
47.	70145421	TUBE-HEAT SHRINK .18	.5FT
48.	77040377	CONNECTOR-TELSPLICE	5
49.	77040378	SPLICE TAP	1
50.	70394558	TIE	2
51.	77040282	TERMINAL PIGBAC 16-14GA	1
52.	52704710	BRACKET-BEACON LT	1
53.	77040013	BEACON LIGHT-AMBER	1
54.	77040048	BUTT CONNECTOR	1
55.	72060048	CAP SCR 3/8-16X1-1/2 HHGR5	2
56.	72063051	WASHER 3/8 LOCK	2
57.	72062002	NUT 3/8-16 LOCK	2
58.	72060004	CAP SCR 1/4-20X1 HHGR5	5
59.	72063049	WASHER 1/4 LOCK	5
60.	77044651	TERMINAL 3/8STUD 16-14GA	2
61.	76394572	GROMMET-LIGHT	2
63.	77044709	HARNESS-BODY/CAB	1
64.	77041251	RELAY	1
65.	76392820	WASHER 1/4 BONDED	2
66.	77044623	CONNECTOR	1
67.	70394069	SEAL-CONNECTOR	4
68.	77044550	TERMINAL	4
69.	77044711	HARNESS	1
70.	77040218	LIGHT-STOP/TURN/TAIL/BU LH	1
71.	77040219	LIGHT-STOP/TURN/TAIL/BU RH	1
72.	77040220	SOCKET-TAILLIGHT DBLCONT	2
73.	77040221	SOCKET-TAILLIGHT SGLCONT	2
74.	60025723	GUARD-TAILLIGHT	2

**ELECTRICAL INSTALLATION-BODY W/
SERIES 60 COMPRESSOR (41714895-2)**



**ELECTRICAL INSTALLATION-BODY W/
SERIES 60 COMPRESSOR (41714895-3)**

CONTINUED ON FOLLOWING PAGE



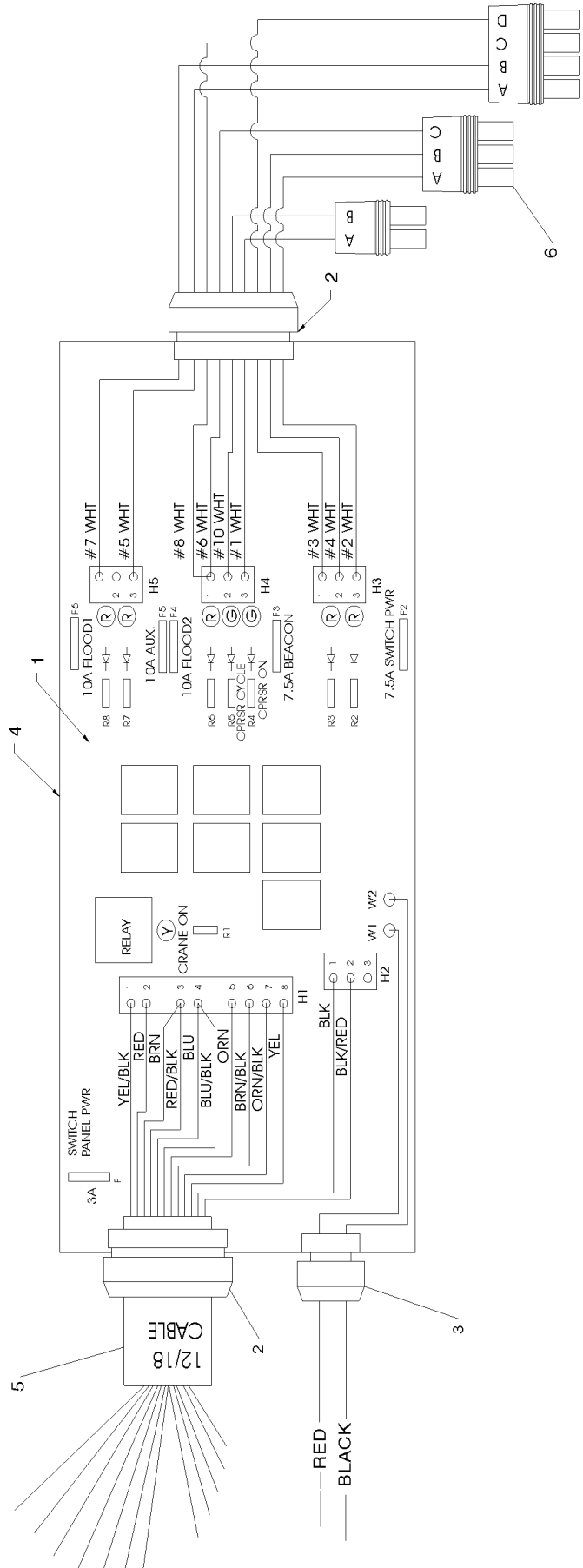
00001296: 51713793.01:19980515

CONTROL BOX (51713793)

- 1. 77041515 RELAY BOARD
- 2. 77044653 STRAIN RELIEF .39-.55
- 3. 77044671 STRAIN RELIEF .24-.47
- 4. 51713975 ENCLOSURE
- 5. 89044136 CABLE 18GA 12WIRE
- 6. 77044710 HARNESS

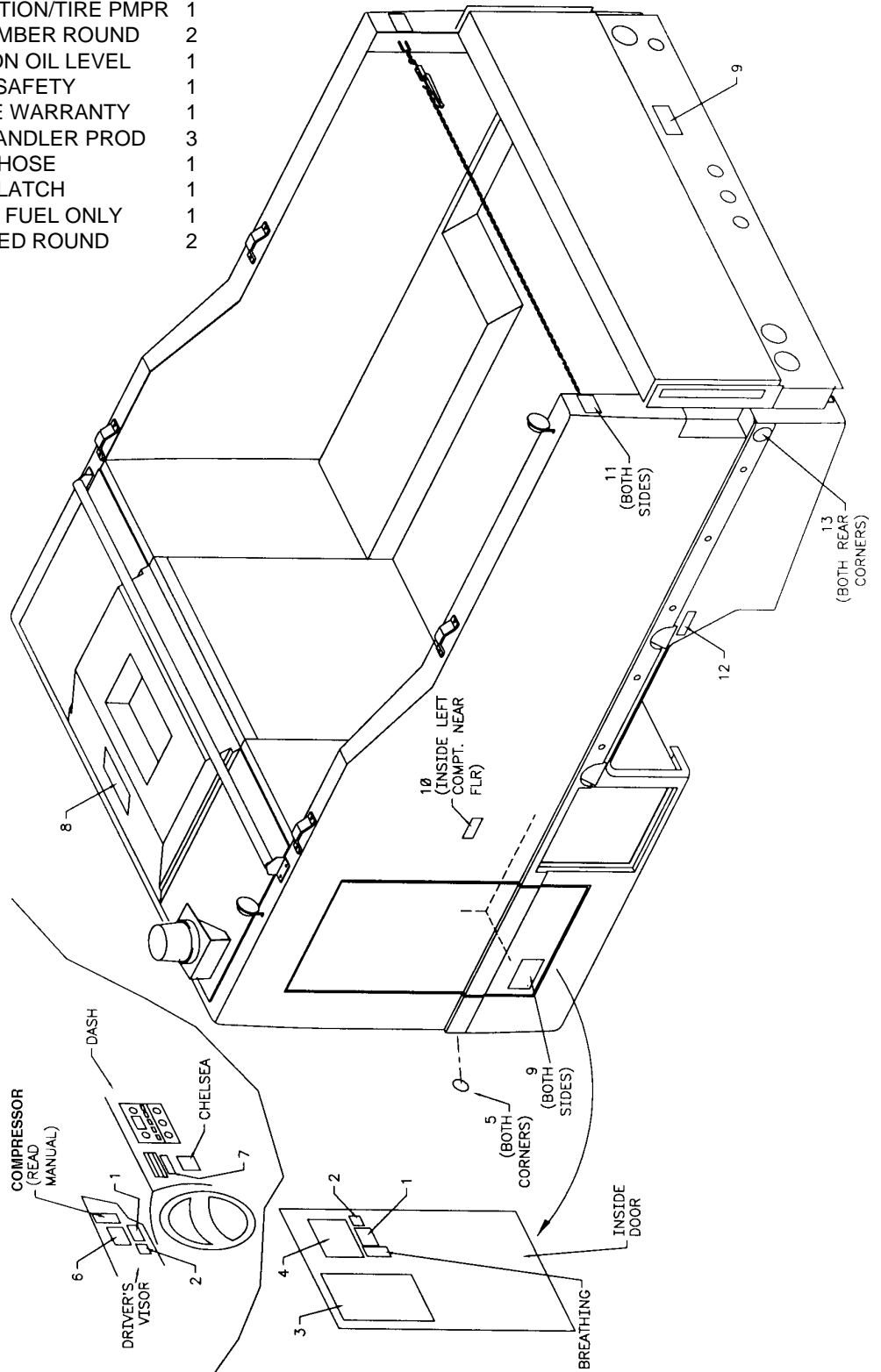
2-17

- 1
- 2
- 1
- 1
- 13FT
- 1



DECAL KIT (95714897)

ITEM	PART NO.	DESCRIPTION	QTY
1.	70392982	DECAL-SERVICE AND REPAIR	2
2.	70392213	DECAL-DON'T WASH/WAX	2
3.	70039436	DECAL-LIQUID WT CHART	1
4.	70391399	DECAL-OPERATION/TIRE PMPR	1
5.	70039058	REFLECTOR-AMBER ROUND	2
6.	71030134	DECAL-CAUTION OIL LEVEL	1
7.	70392965	DECAL-THINK SAFETY	1
8.	70039435	DECAL-NOTICE WARRANTY	1
9.	71393883	DECAL-TIRE HANDLER PROD	3
10.	70039433	DECAL-MIXER HOSE	1
11.	70391595	DECAL-CHAIN LATCH	1
12.	70392309	DECAL-DIESEL FUEL ONLY	1
13.	70039057	REFLECTOR-RED ROUND	2



00001296: :19980515



IOWA MOLD TOOLING CO., INC.

BOX 189, GARNER, IA 50438-0189

TEL: 515-923-3711

TECHNICAL SUPPORT FAX: 515-923-2424