



# **Parts Manual 11M925 Mechanics Body**

**IOWA MOLD TOOLING CO., INC.**  
BOX 189 GARNER IA 50438-0189  
515-923-3711  
PRODUCT SUPPORT FAX: 515-923-3674  
  
MANUAL PART NO. 99900623

REVISED  
10-01-91  
02-21-92  
03-06-92  
07-22-92  
08-03-92  
09-16-92  
03-23-93  
06-07-93  
06-16-93  
11-29-93  
02-17-94

## PART ORDERING INFORMATION

Before placing an order take the time to record the following information.  
This information should then be given to an IMT representative when  
placing your order.

BODY MODEL NUMBER  
BODY SERIAL NUMBER  
DATE OF PURCHASE  
PART NUMBER, DESCRIPTION AND QUANTITY REQUIRED  
IF LEFT OR RIGHT SIDE IS APPLICABLE, PLEASE SPECIFY.

PLEASE, CONTACT IMT AT THE FOLLOWING ADDRESS:

**IOWA MOLD TOOLING CO., INC.**  
**Box 189, Garner, IA 50438-0189**  
**TELEPHONE: 515-923-3711**  
**PRODUCT SUPPORT FAX: 515-923-3674**

or

**IMT CRANES CANADA. LTD.**  
**385 West Street South,**  
**Orillia, Ontario, L3V 5H2, Canada**  
**TELEPHONE: 705-325-7458**  
**FAX: 705-325-7625**

# Table of Contents

## Section 1. SPECIFICATIONS AND INSTALLATION

GENERAL SPECIFICATIONS	1-1
COMPARTMENT SPECIFICATIONS	1-1
STANDARD FEATURES	1-2
OPTIONAL EQUIPMENT	1-2
REQUIRED EQUIPMENT (if a crane is installed on the body)	1-2
DIMENSIONAL REFERENCE DRAWING	1-2
INSTALLATION KIT	93710462 1-3

## Section 2. COMPARTMENT DOORS

COMPARTMENT DOORS	2-1
REAR STEP-BUMPER DOOR COMPONENTS	2-1
RUBBER FENDER COMPONENTS	2-1
LATCH ASSEMBLY COMPONENTS	2-2
WEATHERSTRIPPING COMPONENTS	2-2
DOOR STOP	2-2

## Section 3. COMPARTMENT CABINETS

LIST OF COMPARTMENT OPTIONS	3-1
DRAWERS 16D X 26W (2-5", 1-7")	51707857 3-2
DRAWERS 16D X 26W (5-3")	51707858 3-2
DRAWERS 16D X 26W (3-5")	51707859 3-3
DRAWERS 16D X 26W (3-3", 1-5")	51707860 3-3
DRAWERS 16D X 39W (3-5")	51707861 3-3
DRAWERS 16D X 13W (3-3", 1-5")	51707862 3-3
DRAWERS 16D X 13W (2-5", 1-7")	51707863 3-3
DRAWERS 16D X 13W (5-3")	51707864 3-3
DRAWERS 16D X 13W (3-5")	51707865 3-4
DRAWERS 16D X 13W (3-3", 1-5")	51707866 3-4
DRAWERS 16D X 26W (3-3")	51708290 3-4
DRAWERS 16D X 13W (3-3")	51708933 3-4
DRAWERS 16D X 26W (3-3") 2 W/O CTR DIV	51709289 3-4
DRAWERS 16D X 26W (2-5", 1-7") 2 W/O CTR DIV	51709290 3-4
RISER KIT - ROLLOUT DRAWER (16"D)	51707900 3-5
SHELVES ABOVE ROLLOUT DRAWERS	51709746-48 3-5
TRAY ASSEMBLY-ROLLOUT 34-1/2"W	51709944 3-6
TRAY ASSEMBLY-ROLLOUT	51706903 3-6
DRAWER SET	51706978 3-7
4-DRAWER SET WITH RISER	51704193 3-7
5-DRAWER SET WITH RISER	51704194 3-7
16-DRAWER SET WITH RISER	51709946 3-7
18-DRAWER SET WITH RISER	51704282 3-7
ADJUSTABLE SHELVES	
RIGHT REAR COMPARTMENT	51706873 3-8
HORIZONTAL COMPARTMENTS	51709672 3-8
LEFT REAR COMPARTMENT	51709550 3-8
LEFT FRONT & RIGHT VERTICAL COMPARTMENTS	51707061 3-8
LEFT FRONT COMPARTMENT	51707170 3-8
BOOKSHELF ASSEMBLY 8H X 12D X 26L	51707629 3-8
BOOKSHELF ASSEMBLY 8H X 12D X 46L	51710102 3-8
TANK BRACKET ASSEMBLY-1 OXY/ACET	51709718 3-9
TANK BRACKET ASSEMBLY-2 TANK OXY/ACET	51705349 3-9
HOOK KIT - BOLT IN	51706696 3-9
REMOTE CONTROL HANDLE HANGER KIT	51707795 3-10

## Section 4. TAILGATE AND BUMPER OPTIONS

TAILGATE ASSEMBLY	51708824 4-1
WISE MOUNTING BRACKET	51705646 4-2

## Section 5. TELESCOPING TOPS

## Table of Contents (continued)

### Section 6. AIR SYSTEM OPIONS

#### MOISTURE SEPARATOR/REGULATOR/OILER ASSEMBLIES

3/8" HOSE REEL	51706341	6-1
1/2" HOSE REEL	51706342	6-1
3/8" & 1/2" HOSE REEL	51706343	6-1
HOSE REEL KIT 3/8" X 35' HOSE	51706348	6-2
HOSE REEL KIT 1/2" X 50' HOSE	51706347	6-2
HOSE REEL MOUNTING KIT	51708337	6-2
AIR TANK KIT - 35 GALLON	51708336	6-3
AIR TANK KIT - 58 GALLON	51708369	6-3
AIR TANK KIT - 22 1/2 GALLON	51706697	6-3
AIR TANK DRAIN ASSEMBLY	51709358	6-4
AIR TANK KIT-DUAL 15-GALLON UNDER FRAME	51709693	6-5
AIR TANK KIT-DUAL 15-GALLON INSIDE FRAME	51707363	6-5

### Section 7. CRANE BOOM SUPPORTS / RESERVOIRS

BOOM SUPPORT ASSEMBLY 19-31"	51708161	7-1
RESERVOIR ASSEMBLY - BOOM SUPPORT	51705060	7-1
RESERVOIR ASSEMBLY 20 GALLON (REAR SADDLE)	51709333	7-2
RESERVOIR ASSEMBLY 20 GALLON	51707798	7-2

### Section 8. OUTRIGGER KITS

OUTRIGGER KIT - MANUAL OUT / MANUAL DOWN	51704772	8-1
--	----------	-----

### Section 9. ELECTRICAL OPTIONS

LIGHT AND REFLECTOR KIT (TRUCKLITE)		9-1
LIGHT AND REFLECTOR KIT		9-2
COMPARTMENT LIGHT KIT	51706356	9-3
DOOR ACTIVATED SWITCH KIT	51707400	9-3
CONDUIT KIT	51708909	9-3
OUTLET KIT - 110V	51707760	9-4
LIGHT SWITCH KITS		
1-SWITCH	51706353	9-4
2-SWITCH	51706354	9-4
3-SWITCH	51706355	9-4
FLOODLIGHT KIT - 12V - 5" DIAMETER	51706357	9-5
FLOODLIGHT KIT - 12V - 6 1/2" DIAMETER	51707613	9-5
LIGHT REEL KIT - 12V	51707758	9-5
LIGHT REEL KIT - 110V	51707759	9-5

### Section 10. MISCELLANEOUS OPTIONS

CARGO TIE-DOWN RING	72661303	10-1
UNDERDECK SALVAGE SYSTEM DOOR ASSEMBLY	51709873	10-1
HOOK ASSEMBLY - ADJUSTABLE	51707489	10-1
JERRY CAN HOLDER ASSEMBLY	51709838	10-2
TRAY-TORCH TIP HOLDER	52709828	10-2
CHAIN RACK	52709829	10-2
SIDE MOUNT RECESSED TIE-DOWN	52709830	10-2
DOUBLE J-HOOK	52709945	10-2
SALVAGE KIT - 36 GALLON	51709861	10-2

### Section 10A. SAFETY EQUIPMENT

ICC SAFETY KIT	92091010	10A-1
FIRE EXTINGUISHERS		10A-1
ELECTRIC BACK-UP ALARM	77040020	10A-1
ROTATING BEACON LIGHT	77040013	10A-2

# Section 1. SPECIFICATIONS AND INSTALLATION

## GENERAL SPECIFICATIONS

CRANES FOR WHICH BODY IS DESIGNED	IMT Models 2015, 315A, 3016 and 5016
CHASSIS CAB-TO-AXLE (CA)	84" (213.4cm) Single Axle
LONGSILLS	10" x 10 ga. (25.4 x .21cm) Torsion Box
CROSSMEMBERS	4" x 10 ga. (10.2 x .21cm) formed steel 10" x 2" x 1/4" wall (25.4 x 5.1 x .64cm) rect. tubing
DECK-PLATE FLOORING THICKNESS	1/8" (.32cm) Tread plate
TOTAL COMPARTMENT STORAGE CAPACITY	118.6 Cubic Feet (3.36 cubic meters)
TOTAL BODY WEIGHT	3200 LBS (1452 kg)
TOTAL BODY DECK SURFACE AREA	48 Square Feet (4.46 square meters)

## COMPARTMENT SPECIFICATIONS

LEFT FRONT COMPARTMENT	48"H X 51"W X 20"D (121.9 x 129.5 x 50.8cm) 28.33 cubic feet (.80 cubic meters)
LEFT HORIZONTAL COMPARTMENT	22"H X 50"W X 20"D (55.9 x 127.0 x 50.8cm) 12.73 cubic feet (.36 cubic meters)
LEFT REAR COMPARTMENT	48"H X 27"W X 20"D (121.9 x 68.6 x 50.8cm) 15.00 cubic feet (.43 cubic meters)
RIGHT FRONT COMPARTMENT	48"H X 29.5"W X 20"D (121.9 x 75.0 x 50.8cm) 16.38 cubic feet (.46 cubic meters)
SECOND RIGHT FRONT COMPARTMENT	48"H X 21.5"W X 20"D (121.9 x 54.6 x 50.8cm) 11.94 cubic feet (.34 cubic meters)
RIGHT HORIZONTAL COMPARTMENT	22"H X 50"W X 20"D (55.9 x 127.0 x 50.8cm) 12.73 cubic feet (.36 cubic meters)
RIGHT REAR CRANE MOUNTING COMPARTMENT	42"H X 27"W X 20"D (106.7 x 68.6 x 50.8cm) 12.50 cubic feet (.35 cubic meters)
REAR WORKBENCH STORAGE COMPARTMENT	11"H X 94"W X 16"D (27.9 x 238.8 x 40.6cm) 9.00 cubic feet (.25 cubic meters)

Note: Dimensions of compartments are nominal.

## STANDARD FEATURES

- Seven compartments of 14 ga. galv. steel with 14 ga. tread plate tops and backs.
- Rear curbside compartment reinforced for crane mounting.
- Compartment weatherproofing.
- Rear workbench with through compartment.
- Six recessed cargo tie-down brackets.
- Two rear mounted grab handles.
- Outrigger housing tube.
- Primed and undercoated.

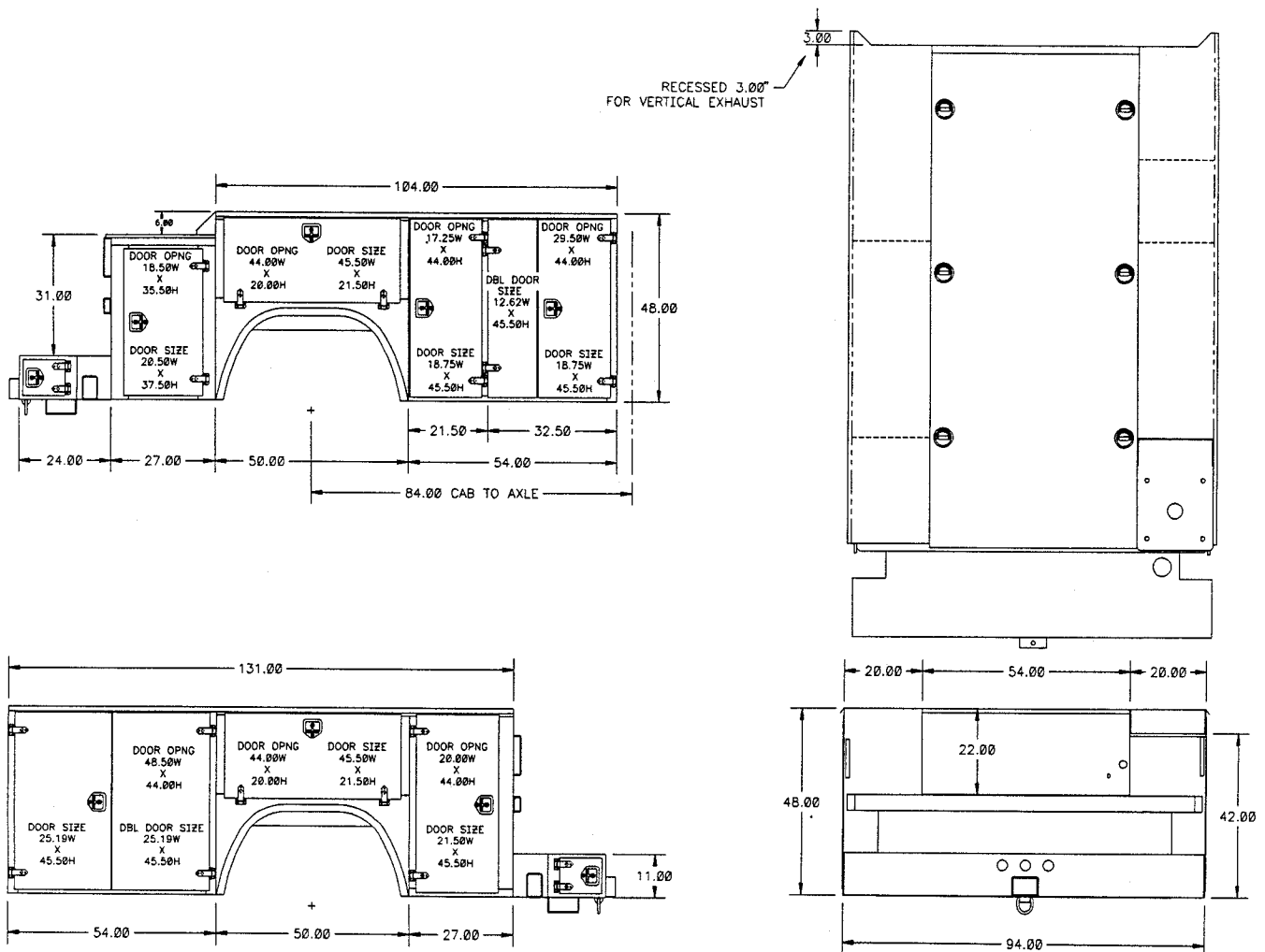
## OPTIONAL EQUIPMENT

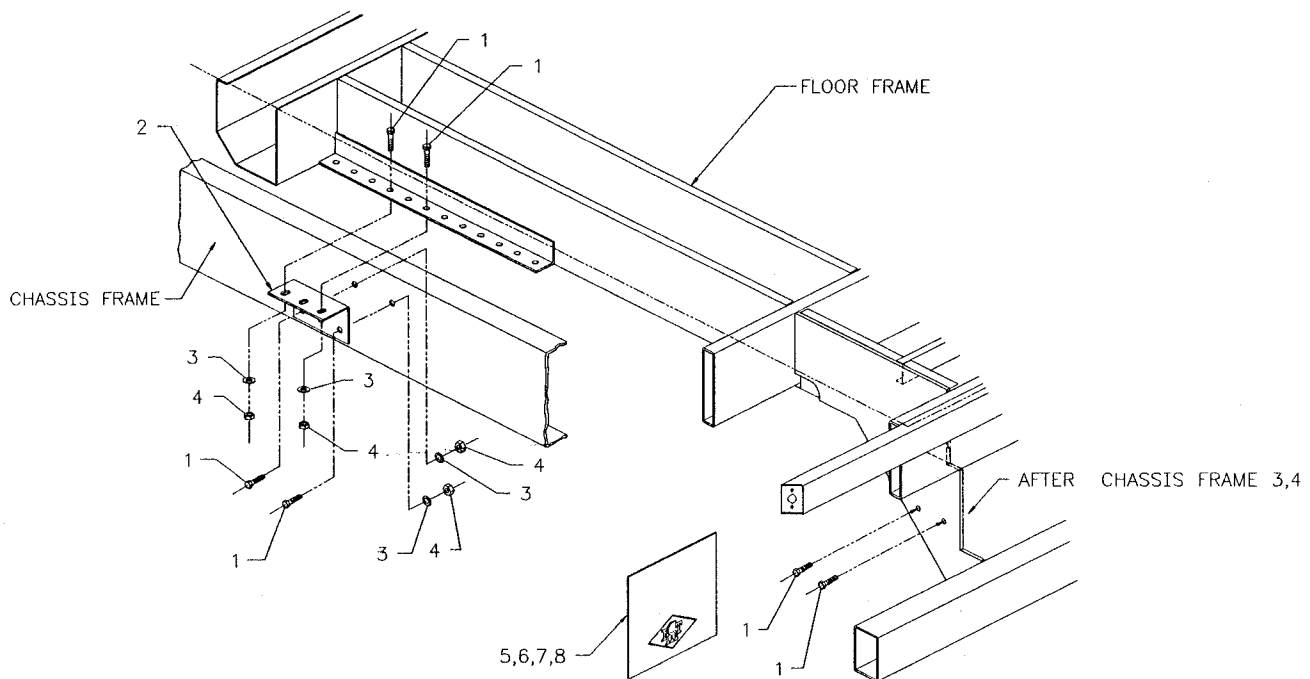
- Fold-down 8" (20.3cm) tailgate with latching hardware.
- Complete mounting system which includes mud flaps.
- Thirty-six inch welder platform complete with two underbody toolboxes, located behind the cab and in front of body. The cab-to-axle dimension must be increased to 124" (315cm) to accept this option.
- Air operated salvage system with 36-gallon (136 liter) top deck mounted tank.
- Installed.
- Light and reflector kits.
- Wiring in loom.
- Wiring in conduit.
- Finish paint and lettering.

## REQUIRED EQUIPMENT (if a crane is installed on the body)

- Right front mounted "up-down" outrigger and rear outrigger assembly with an "up-down" outrigger on left-rear and an "up-down/in-out" outrigger on the right-rear corner of the body.

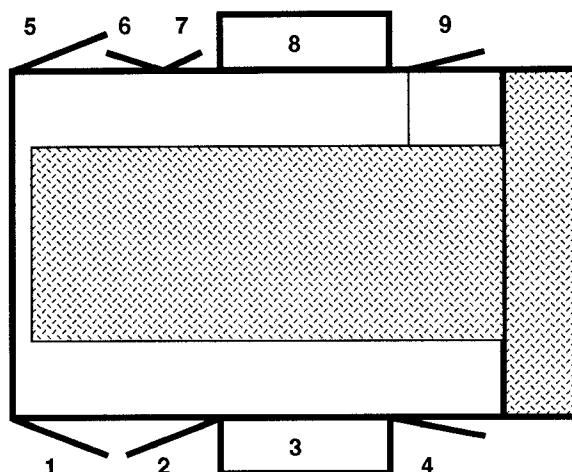
IMT reserves the right to change specifications and design without notice.



**INSTALLATION KIT****93710462**

ITEM	PART NUMBER	DESCRIPTION	QTY
1.	72060150	CAP SCR 5/8-11X1-3/4 HH GR5	12
2.	60115068	MOUNTING ANGLE	2
3.	72063007	WASHER 5/8 WRT	20
4.	72062091	NUT 5/8-11 LOCK	12
5.	76039117	MUD FLAP	2
6.	72060025	CAP SCR 5/16-18X1 HH GR5	6
7.	72063002	WASHER 5/16 WRT	6
8.	72063078	WASHER 5/16X1-5/8 OD	6
9.	72062109	NUT 5/16-18 LOCK	6
10.	99900405	CHASSIS MODIFICATION DWG	1

## Section 2. COMPARTMENT DOORS



### COMPARTMENT DOORS

ITEM	COMPARTMENT DOOR	SIZE (INCHES)	PART NO.
1.	LEFT FRONT W/LATCH	25.63W X 45.50H	52710994
2.	LEFT FRONT W/O LATCH	25.63W X 45.50H	52710995
3.	LEFT HORIZONTAL	45.50W X 21.50H	52710989
4.	LEFT REAR	21.50W X 45.50H	52710989
5.	RIGHT FRONT W/LATCH	16.12W X 45.50H	52710992
6.	RIGHT FRONT W/O LATCH	16.12W X 45.50H	52710993
7.	RIGHT VERTICAL	18.75W X 45.50H	52710987
8.	RIGHT HORIZONTAL	45.50W X 21.50H	52710989
9.	RIGHT REAR	20.50W X 37.50H	52710988

### COMPONENTS USED ON EACH DOOR

HINGE-STAINLESS STEEL	2	72661383
HINGE SHIM	2	60250201
MACH SCR 1/4-20X1 TORX-SS	6	72601653
MACH SCR 1/4-20X3/4 TORX-SS	2	72601652
NUT 1/4-20 LOCK-SS	8	72062194
WASHER 1/4 SS	8	72063166

NOTE: USE SEALANT (70086112) BETWEEN HINGES, SHIMS AND BODY.

### REAR STEP-BUMBER DOOR COMPONENTS

DOOR 12.50W X 8.75H	1	60115059
HINGE-STAINLESS STEEL	2	72661383
HINGE SHIM	2	60250201
MACH SCR 1/4-20X1 TORX-SS	6	72601653
MACH SCR 1/4-20X3/4 TORX-SS	2	72601652
NUT 1/4-20 LOCK-SS	8	72062194
WASHER 1/4 SS	8	72063166

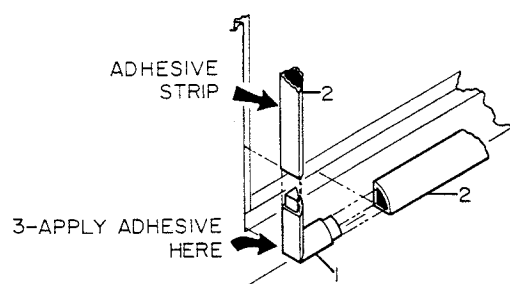
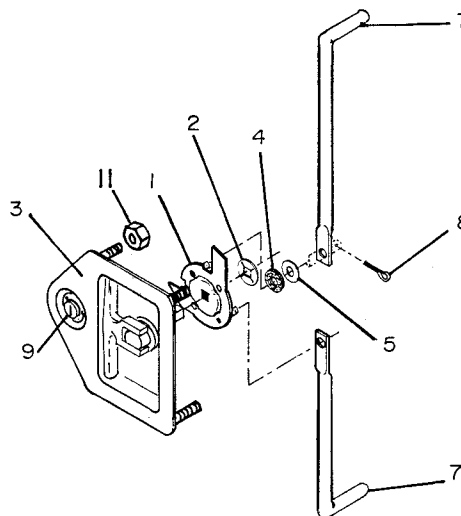
### RUBBER FENDER COMPONENTS

RUBBER FENDER	14 FT	89393137
RIVET 1/4X1/2 AL LG HD	54	72661384



**LATCH ASSEMBLY COMPONENTS**

1. NOT AVAILABLE SEPARATELY
2. 72062205 NUT - PUSH
3. 72661314 LATCH WITH LOCK & STUDS - SS
4. WASHER .31 RUBBER (PART OF 6)
5. WASHER .31 FLAT (PART OF 6)
6. 94732135 PIN & WASHER KIT (INCL:4,5,8)
7. 60115098 ROD - DOOR 22-1/4
- 60115097 ROD - DOOR 18
- 60110127 ROD - DOOR 16-1/8
8. COTTER PIN - LATCH (PART OF 6)
9. 72066373 REPLACEMENT LOCK AND KEY
10. 76393253 LATCH GASKET (NOT SHOWN)
11. 72062194 NUT 1/4-20 LOCK - SS

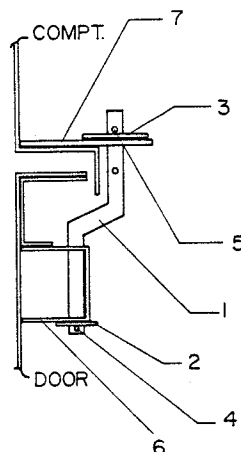
**WEATHERSTRIPPING COMPONENTS**

- | ITEM | PART NO. | DESCRIPTION                        |
|------|----------|------------------------------------|
| 1.   | 70392639 | WEATHERSTRIP CORNER MOLDING        |
| 2.   | 89392588 | WEATHERSTRIP WITH ADHESIVE BACKING |
| 3.   | 70067005 | WEATHERSTRIP ADHESIVE - TUBE       |

**NOTE: WEATHERSTRIP ADHESIVE BACKING MUST BE APPLIED SO THAT THE DOOR COMPRESSES RATHER THAN SHEARS THE ADHESIVE STRIP. THE WEATHERSTRIP CORNERS ARE NOT ADHESIVE BACKED. AN APPROPRIATE ADHESIVE MUST BE USED.**

**DOOR STOP ( 52709635)**

- | ITEM | PART NO. | DESCRIPTION                      | QTY |
|------|----------|----------------------------------|-----|
| 1.   | 60110335 | ROD - DOOR STOP 8"               | 1   |
| 2.   | 72063001 | WASHER 1/4 WRT                   | 1   |
| 3.   | 72063118 | WASHER 3/8 WRT X 1-1/4 O.D.X18GA | 1   |
| 4.   | 72066141 | HAIR PIN 1/16                    | 1   |
| 5.   | 72066168 | COTTER PIN 3/32 X 3/4            | 1   |
| 6.   | 60110184 | BRACKET                          | REF |
| 7.   | 60111224 | SLIDE                            | REF |



## Section 3. COMPARTMENT OPTIONS

### LEFT FRONT COMPARTMENT

DRAWERS - 16"D X 26"W 2-5"H & 1-7"H	51707857
DRAWERS - 16"D X 26"W 5-3"H	51707858
DRAWERS - 16"D X 26"W 3-5"H	51707859
DRAWERS - 16"D X 26"W 3-3"H & 1-5"H	51707860
DRAWERS - 16"D X 26"W 3-3"H	51708290
DRAWERS - 16"D X 26"W 3-3"H NO DIV	51709289
DRAWERS - 16"D X 26"W 2-5"H & 1-7"H NO DIV	51709290
DRAWERS - 16"D X 39"W 3-5"H	51707861
DRAWERS - 16"D X 39"W 3-3"H & 1-5"H	51707862
DRAWERS - 16"D X 13"W 2-5"H & 1-7"H	51707863
DRAWERS - 16"D X 13"W 5-3"H	51707864
DRAWERS - 16"D X 13"W 3-5"H	51707865
DRAWERS - 16"D X 13"W 3-3"H & 1-5"H	51707866
DRAWERS - 16"D X 13"W 3-3"H	51708933
ROLLOUT DRAWER MOUNTING KIT	51707900
SHELF - ROLLOUT DRAWERS 15.5"W	51709748
SHELF - ROLLOUT DRAWERS 28.5"W	51709746
SHELF - ROLLOUT DRAWERS 41.5"W	51709747
TRAY ASM - ROLLOUT	51706903
TRAY ASM - ROLLOUT 34.5"W	51709944

### LEFT FRONT COMPARTMENT WITH DIVIDER

BOLT-ON DIVIDER KIT	51708825
ADJUSTABLE SHELF 17" X 21"-25"	51707061
ADJUSTABLE SHELF 17" X 29"-33"	51707170
4-DRAWER SET WITH RISER	51704193
5-DRAWER SET WITH RISER	51704194
16-DRAWER SET	51709946
18-DRAWER SET	51704282

### HORIZONTAL COMPARTMENT (LEFT OR RIGHT SIDE)

BOOKSHELF ASM 8"H X 26"L X 12"D	51707629
BOOKSHELF ASM 8"H X 46"L X 12"D	51710102
ADJUSTABLE SHELF 17" X 50"-54"	51709672
DRAWERS - 16"D X 39"W 3-5"H	51707861
DRAWERS - 16"D X 39"W 3-3"H & 1-5"H	51707862
ROLLOUT DRAWER MOUNTING KIT 3"H	51707900
SHELF - ROLLOUT DRAWERS 41.5"W	51709747
1-DRAWER SET	51706978
5-DRAWER SET WITH RISER	51704194
PULLOUT DRAWER BASE (4 & 5 DRAWER SET)	60110327

### LEFT REAR COMPARTMENT

SHELF 17.5" X 16.75" WELD-IN	60109294
ADJUSTABLE SHELF 17" X 27"-31"	51709550
DRAWERS - 16"D X 13"W 2-5"H & 1-7"H	51707863
DRAWERS - 16"D X 13"W 5-3"H	51707864
DRAWERS - 16"D X 13"W 3-5"H	51707865
DRAWERS - 16"D X 13"W 3-3" & 1-5"	51707866
DRAWERS - 16"D X 13"W 3-3"	51708933
ROLLOUT DRAWER MOUNTING KIT 3"H	51707900
SHELF - ROLLOUT DRAWERS 15.5"W	51709748

### RIGHT FRONT COMPARTMENT

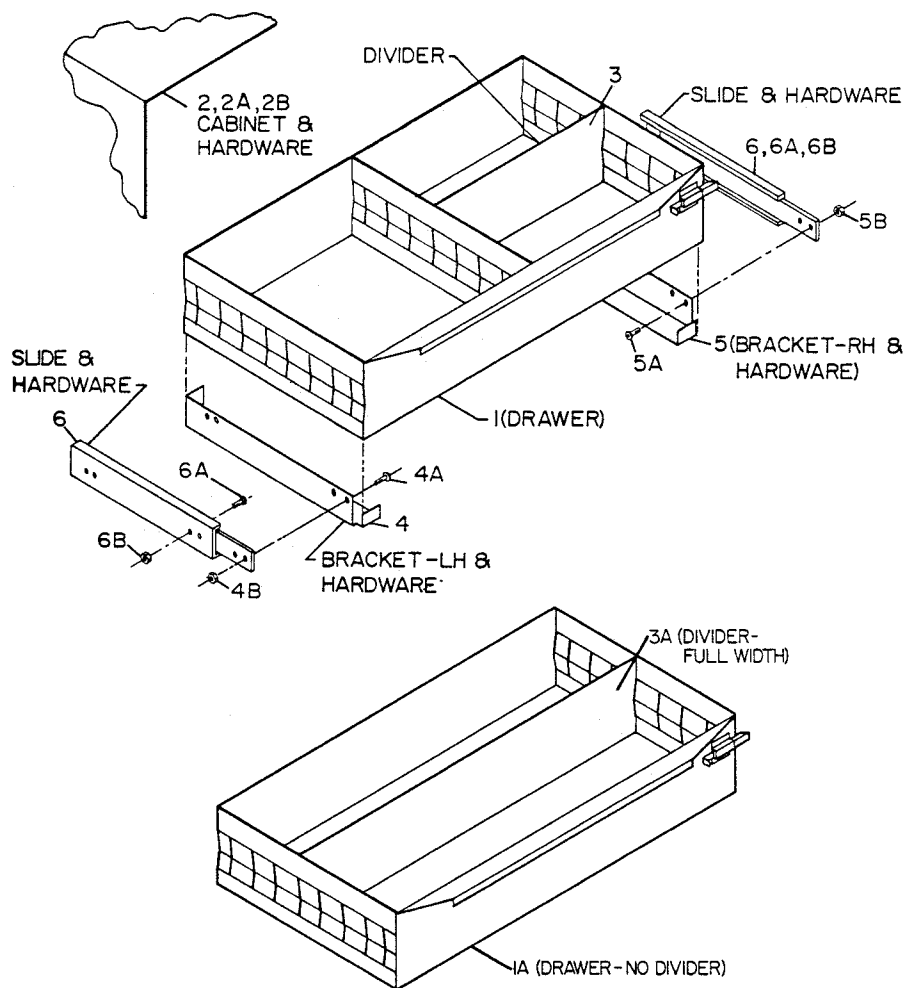
1-TANK BRACKET - OXY/ACET	51709718
2-TANK BRACKET - OXY/ACET	51705349
HOOK-BOLT IN (CABLE/HOSE KIT)	51706696
J-HOOK (DOUBLE)	52709945
TRAY - TORCH TIP HOLDER 10.5"	52709828

### RIGHT VERTICAL COMPARTMENT

ADJUSTABLE SHELF 17" X 21"-25"	51707061
4-DRAWER SET WITH RISER	51704193
5-DRAWER SET WITH RISER	51704194
16-DRAWER SET	51709946
18-DRAWER SET	51704282
TRAY-SPRAY CAN	52709826

### RIGHT REAR COMPARTMENT

ADJUSTABLE SHELF HANGER BRACKET 24"	60107744
ADJUSTABLE SHELF 17" X 24"-28"	51706873
REMOTE CONTROL HANDLE HANGER KIT	51707765



## DRAWER COMPONENTS

NOTE: USE THIS DRAWING IN CONJUNCTION WITH THE FOLLOWING PARTS LISTS WHEN ORDERING PARTS.

### DRAWERS-16D X 26W (2 - 5", 1 - 7") 51707857

1.	52705719	DRAWER - 5" HIGH	2
1.	52706170	DRAWER - 7" HIGH	1
2.	52707895	CABINET	1
2A.	72060023	CAP SCREW - 5/16-18 X 3/4 GR5	7
2B.	72062109	NUT - 5/16-18 LOCK	7
3.	60025251	DIVIDER	18
4.	60111303	BRACKET - LH	3
4A.	72601283	SCREW - #10-24 X 1/2 PANHD	12
4B.	72062106	NUT - #10-24 LOCK	12
5.	60111304	BRACKET - RH	3
5A.	72601283	SCREW - #10-24 X 1/2 PANHD	12
5B.	72062106	NUT - #10-24 LOCK	12
6.	70731440	SLIDE - 16"	6
6A.	72601284	SCREW - #10-24 X 5/8 FLATHD	24
6B.	72062106	NUT - #10-24 LOCK	24

### DRAWERS-16D X 26W (5 - 3") 51707858

1.	52705719	DRAWER - 3" HIGH	5
2.	52707890	CABINET	1
2A.	72060023	CAP SCREW - 5/16-18 X .75 GR5	7
2B.	72062109	NUT - 5/16-18 LOCK	7
3.	60025250	DIVIDER	30
4.	60111303	BRACKET - LH	5
4A.	72601283	SCREW - #10-24 X 1/2 PANHD	20
4B.	72062106	NUT - #10-24 LOCK	20
5.	60111304	BRACKET - RH	5
5A.	72601283	SCREW - #10-24 X 1/2 PANHD	20
5B.	72062106	NUT - #10-24 LOCK	20
6.	70731440	SLIDE - 16"	10
6A.	72601284	SCREW - #10-24 X 5/8 FLATHD	40
6B.	72062106	NUT - #10-24 LOCK	40

**DRAWERS-16D X 26W (3 - 5")**  
**51707859**

1.	52705719	DRAWER - 5" HIGH	3
2.	52707893	CABINET	1
2A.	72060023	CAP SCREW - 5/16-18 X .75 GR5	7
2B.	72062109	NUT - 5/16-18 LOCK	7
3.	60025251	DIVIDER	18
4.	60111303	BRACKET - LH	3
4A.	72601283	SCREW - #10-24 X 1/2 PANHD	12
4B.	72062106	NUT - #10-24 LOCK	12
5.	60111304	BRACKET - RH	3
5A.	72601283	SCREW - #10-24 X 1/2 PANHD	12
5B.	72062106	NUT - #10-24 LOCK	12
6.	70731440	SLIDE - 16"	6
6A.	72601284	SCREW - #10-24 X 5/8 FLATHD	24
6B.	72062106	NUT - #10-24 LOCK	24

**DRAWERS-16D X 26W (3 - 3", 1 - 5")**  
**51707860**

1.	52705718	DRAWER - 3" HIGH	3
1.	52705719	DRAWER - 5" HIGH	1
2.	52707887	CABINET	1
2A.	72060023	CAP SCREW - 5/16-18 X 3/4 GR5	7
2B.	72062109	NUT - 5/16-18 LOCK	7
3.	60025250	DIVIDER	18
3.	60025251	DIVIDER	6
4.	60111303	BRACKET - LH	4
4A.	72601283	SCREW - #10-24 X 1/2 PANHD	16
4B.	72062106	NUT - #10-24 LOCK	16
5.	60111304	BRACKET - RH	4
5A.	72601283	SCREW - #10-24 X 1/2 PANHD	16
5B.	72062106	NUT - #10-24 LOCK	16
6.	70731440	SLIDE - 16"	5
6A.	72601284	SCREW - #10-24 X 5/8 FLATHD	32
6B.	72062106	NUT - #10-24 LOCK	32

**DRAWERS-16D X 39W (3 - 5")**  
**51707861**

1.	52707899	DRAWER - 3" HIGH	3
2.	52707894	CABINET	1
2A.	72060023	CAP SCREW - 5/16-18 X .75 GR5	7
2B.	72062109	NUT - 5/16-18 LOCK	7
3.	60025251	DIVIDER	27
4.	60111303	BRACKET - LH	3
4A.	72601283	SCREW - #10-24 X 1/2 PANHD	12
4B.	72062106	NUT - #10-24 LOCK	12
5.	60111304	BRACKET - RH	3
5A.	72601283	SCREW - #10-24 X 1/2 PANHD	12
5B.	72062106	NUT - #10-24 LOCK	12
6.	70731440	SLIDE - 16"	6
6A.	72601284	SCREW - #10-24 X 5/8 FLATHD	24
6B.	72062106	NUT - #10-24 LOCK	24

**DRAWERS-16D X 13W (3 - 3", 1 - 5")**  
**51707862**

1.	52707124	DRAWER - 3" HIGH	3
1.	52707899	DRAWER - 5" HIGH	1
2.	52707888	CABINET	1
2A.	72060023	CAP SCREW - 5/16-18 X .75 GR5	7
2B.	72062109	NUT - 5/16-18 LOCK	7
3.	60025250	DIVIDER	27
3.	60025251	DIVIDER	9
4.	60111303	BRACKET - LH	4
4A.	72601283	SCREW - #10-24 X 1/2 PANHD	16
4B.	72062106	NUT - #10-24 LOCK	16
5.	60111304	BRACKET - RH	4
5A.	72601283	SCREW - #10-24 X 1/2 PANHD	16
5B.	72062106	NUT - #10-24 LOCK	16
6.	70731440	SLIDE - 16"	8
6A.	72601284	SCREW - #10-24 X 5/8 FLATHD	32
6B.	72062106	NUT - #10-24 LOCK	32

**DRAWERS-16D X 13W (2 - 5", 1 - 7")**  
**51707863**

1.	52706248	DRAWER - 5" HIGH	2
1.	52707898	DRAWER - 7" HIGH	1
2.	52707891	CABINET	1
2A.	72060023	CAP SCREW - 5/16-18 X 3/4 GR5	7
2B.	72062109	NUT - 5/16-18 LOCK	7
3.	60025251	DIVIDER	12
4.	60111303	BRACKET - LH	3
4A.	72601283	SCREW - #10-24 X 1/2 PANHD	12
4B.	72062106	NUT - #10-24 LOCK	12
5.	60111304	BRACKET - RH	3
5A.	72601283	SCREW - #10-24 X 1/2 PANHD	12
5B.	72062106	NUT - #10-24 LOCK	12
6.	70731440	SLIDE - 16"	6
6A.	72601284	SCREW - #10-24 X 5/8 FLATHD	48
6B.	72062106	NUT - #10-24 LOCK	48

**DRAWERS-16D X 13W (5 - 3")**  
**51707864**

1.	52706184	DRAWER - 3" HIGH	5
2.	52707889	CABINET	1
2A.	72060023	CAP SCREW - 5/16-18 X .75 GR5	7
2B.	72062109	NUT - 5/16-18 LOCK	7
3.	60025250	DIVIDER	15
4.	60111303	BRACKET - LH	5
4A.	72601283	SCREW - #10-24 X 1/2 PANHD	20
4B.	72062106	NUT - #10-24 LOCK	20
5.	60111304	BRACKET - RH	5
5A.	72601283	SCREW - #10-24 X 1/2 PANHD	20
5B.	72062106	NUT - #10-24 LOCK	20
6.	70731440	SLIDE - 16"	10
6A.	72601284	SCREW - #10-24 X 5/8 FLATHD	40
6B.	72062106	NUT - #10-24 LOCK	40

**DRAWERS-16D X 13W (3 - 5")**  
**51707865**

1.	52706248	DRAWER - 5" HIGH	3
2.	52707892	CABINET	1
2A.	72060023	CAP SCREW - 5/16-18 X .75 GR5	7
2B.	72062109	NUT - 5/16-18 LOCK	7
3.	60025251	DIVIDER	15
4.	60111303	BRACKET - LH	3
4A.	72601283	SCREW - #10-24 X 1/2 PANHD	12
4B.	72062106	NUT - #10-24 LOCK	12
5.	60111304	BRACKET - RH	3
5A.	72601283	SCREW - #10-24 X 1/2 PANHD	12
5B.	72062106	NUT - #10-24 LOCK	12
6.	70731440	SLIDE - 16"	6
6A.	72601284	SCREW - #10-24 X 5/8 FLATHD	24
6B.	72062106	NUT - #10-24 LOCK	24

**DRAWERS-16D X 13W (3 - 3", 1 - 5")**  
**51707866**

1.	52706184	DRAWER - 3" HIGH	3
1.	52706248	DRAWER - 5" HIGH	1
2.	52707886	CABINET	1
2A.	72060023	CAP SCREW - 5/16-18 X 3/4 GR5	7
2B.	72062109	NUT - 5/16-18 LOCK	7
3.	60025250	DIVIDER	9
3.	60025251	DIVIDER	3
4.	60111303	BRACKET - LH	4
4A.	72601283	SCREW - #10-24 X 1/2 PANHD	16
4B.	72062106	NUT - #10-24 LOCK	16
5.	60111304	BRACKET - RH	4
5A.	72601283	SCREW - #10-24 X 1/2 PANHD	16
5B.	72062106	NUT - #10-24 LOCK	16
6.	70731440	SLIDE - 16"	8
6A.	72601284	SCREW - #10-24 X 5/8 FLATHD	32
6B.	72062106	NUT - #10-24 LOCK	32

**DRAWERS-16D X 26W (3 - 3")**  
**51708290**

1.	52705718	DRAWER - 3" HIGH	3
2.	52707885	CABINET	1
2A.	72060023	CAP SCREW - 5/16-18 X .75 GR5	7
2B.	72062109	NUT - 5/16-18 LOCK	7
3.	60025250	DIVIDER	18
4.	60111303	BRACKET - LH	3
4A.	72601283	SCREW - #10-24 X 1/2 PANHD	12
4B.	72062106	NUT - #10-24 LOCK	12
5.	60111304	BRACKET - RH	3
5A.	72601283	SCREW - #10-24 X 1/2 PANHD	12
5B.	72062106	NUT - #10-24 LOCK	12
6.	70731440	SLIDE - 16"	6
6A.	72601284	SCREW - #10-24 X 5/8 FLATHD	24
6B.	72062106	NUT - #10-24 LOCK	24

**DRAWERS-16D X 13W (3 - 3")**  
**51708933**

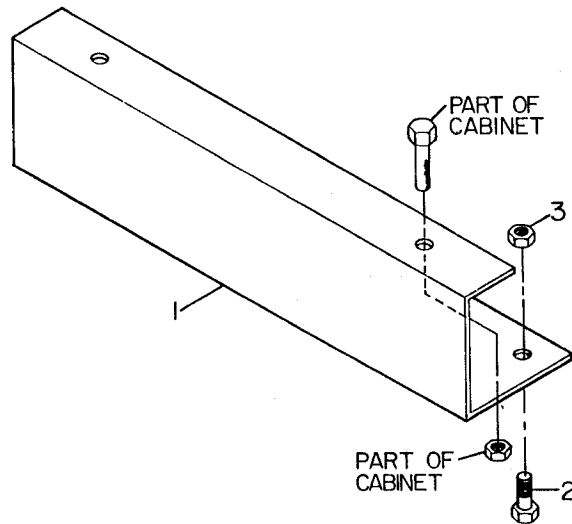
1.	52706184	DRAWER - 3" HIGH	3
2.	52708932	CABINET	1
2A.	72060023	CAP SCREW - 5/16-18 X .75 GR5	7
2B.	72062109	NUT - 5/16-18 LOCK	7
3.	60025411	DIVIDER	9
4.	60111303	BRACKET - LH	3
4A.	72601283	SCREW - #10-24 X 1/2 PANHD	12
4B.	72062106	NUT - #10-24 LOCK	12
5.	60111304	BRACKET - RH	3
5A.	72601283	SCREW - #10-24 X 1/2 PANHD	12
5B.	72062106	NUT - #10-24 LOCK	12
6.	70731440	SLIDE - 16"	6
6A.	72601284	SCREW - #10-24 X 5/8 FLATHD	24
6B.	72062106	NUT - #10-24 LOCK	24

**DRAWERS-16D X 26W (3 - 3")**  
**2 DRAWERS W/O CENTER DIVIDER**  
**51709289**

1.	52705718	DRAWER - 3" HIGH	1
1A.	52709259	DRAWER - 3" HIGH W/O DIVIDER	2
2.	52707885	CABINET	1
2A.	72060023	CAP SCREW - 5/16-18 X .75 GR5	7
2B.	72062109	NUT - 5/16-18 LOCK	7
3.	60025250	DIVIDER	12
3A.	60250061	DIVIDER - FULL WIDTH	3
4.	60111303	BRACKET - LH	3
4A.	72601283	SCREW - #10-24 X 1/2 PANHD	12
4B.	72062106	NUT - #10-24 LOCK	12
5.	60111304	BRACKET - RH	3
5A.	72601283	SCREW - #10-24 X 1/2 PANHD	12
5B.	72062106	NUT - #10-24 LOCK	12
6.	70731440	SLIDE - 16"	6
6A.	72601284	SCREW - #10-24 X 5/8 FLATHD	24
6B.	72062106	NUT - #10-24 LOCK	24

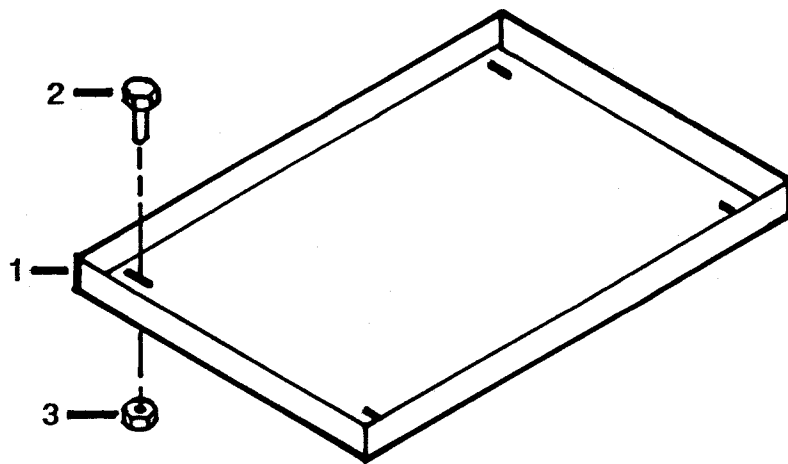
**DRAWERS-16D X 26W (2 - 5", 1 - 7")**  
**2 DRAWERS W/O CENTER DIVIDER**  
**51709290**

1.	52705719	DRAWER - 5" HIGH	1
1A.	52709260	DRAWER - 5" HIGH W/O DIVIDER	1
1A.	52709261	DRAWER - 7" HIGH W/O DIVIDER	1
2.	52707895	CABINET	1
2A.	72060023	CAP SCREW - 5/16-18 X 3/4 GR5	7
2B.	72062109	NUT - 5/16-18 LOCK	7
3.	60025251	DIVIDER	6
3A.	60250053	DIVIDER - FULL WIDTH	6
4.	60111303	BRACKET - LH	3
4A.	72601283	SCREW - #10-24 X 1/2 PANHD	12
4B.	72062106	NUT - #10-24 LOCK	12
5.	60111304	BRACKET - RH	3
5A.	72601283	SCREW - #10-24 X 1/2 PANHD	12
5B.	72062106	NUT - #10-24 LOCK	12
6.	70731440	SLIDE - 16"	6
6A.	72601284	SCREW - #10-24 X 5/8 FLATHD	24
6B.	72062106	NUT - #10-24 LOCK	24



**RISER KIT - ROLLOUT DRAWER (16" D)**  
**51707900**

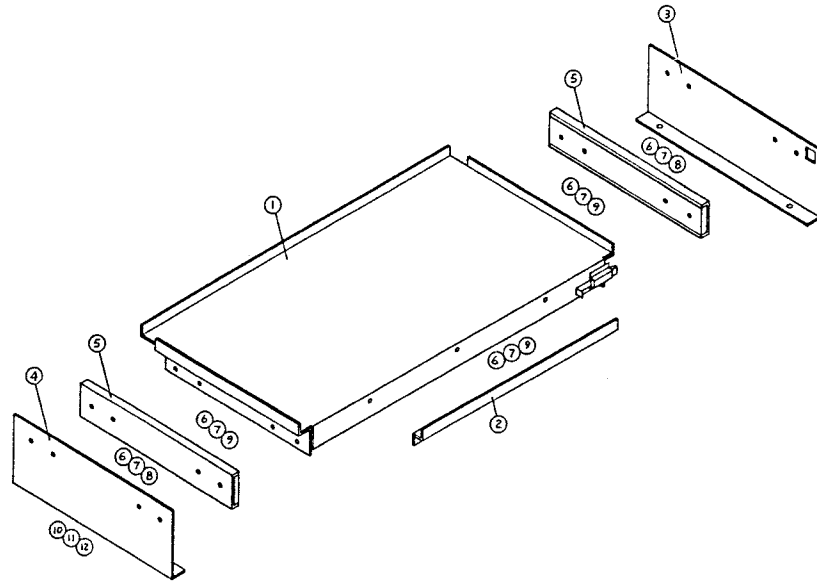
ITEM	PART NO.	DESCRIPTION	QTY
1.	60111640	MOUNTING BRACKET	2
2.	72060023	CAP SCREW 5/16-18 X 3/4 HH GR5	4
3.	72062109	NUT 5/16-18 LOCK	4



**SHELVES FOR USE ABOVE ROLLOUT DRAWERS**

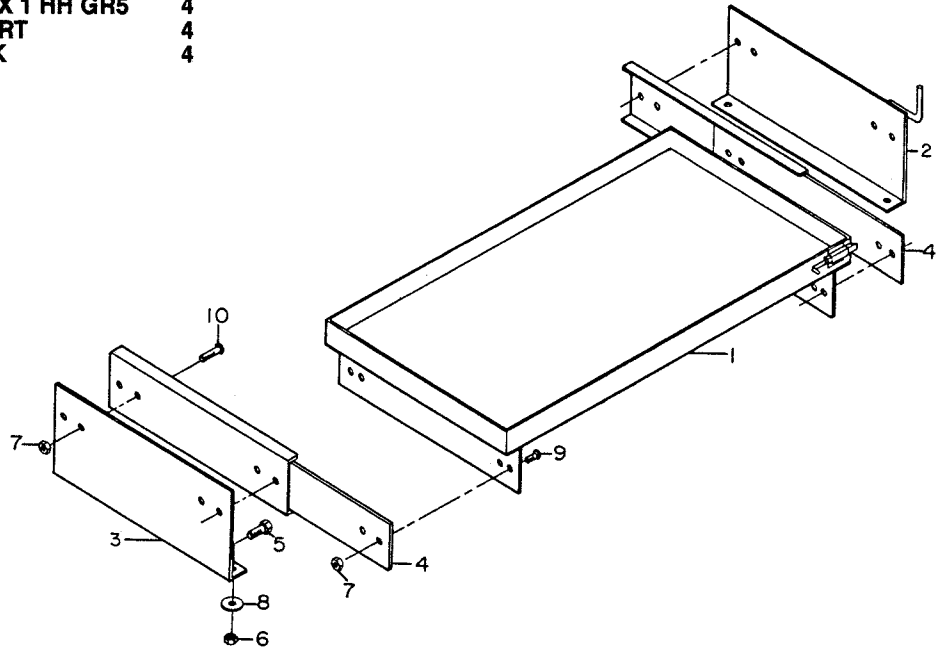
- A. 15-1/2" W 51709748  
 B. 28-1/2" W 51709746  
 C. 41-1/2" W 51709747

	A	B	C
1.	1	1	1
2.	4	4	4
3.	4	4	4



### TRAY ASSEMBLY - ROLLOUT 34-1/2"W 51709944

ITEM	PART NO.	DESCRIPTION	QTY
1.	52709936	TRAY 16-3/4 X 34-1/2	1
2.	60114297	BRACKE	1
3.	60114300	MTG BRACKET RH	1
4.	60114299	MTG BRACKET LH	1
5.	70731440	DRAWER SLIDE	2
6.	72062106	NUT #10-24 LOCK	19
7.	72063123	WASHER #10 WRT	19
8.	72601284	MACH SCR #10-24 X 5/8 FLH	8
9.	72060635	MACH SCR #10-24 X 5/8 RDH	11
10.	72060046	CAP SCR 3/8-16 X 1 HH GR5	4
11.	72063002	WASHER 5/16 WRT	4
12.	72062103	NUT 3/8-16 LOCK	4

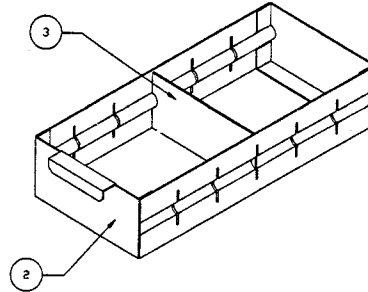
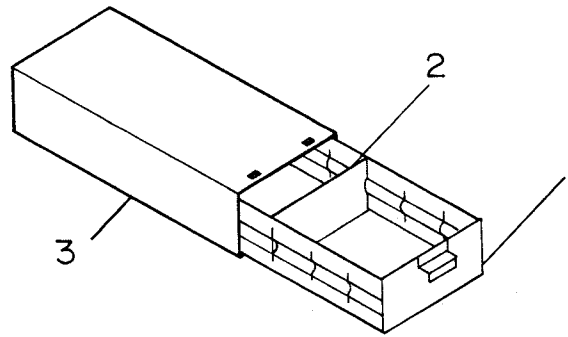


### TRAY ASSEMBLY - ROLLOUT 51706903

ITEM	PART NO.	DESCRIPTION	QTY
1.	52706901	TRAY	1
2.	52706902	MOUNTING BRACKET - RH	1
3.	60110257	MOUNTING BRACKET	1
4.	70731440	DRAWER SLIDE	2
5.	72060046	CAP SCREW - 3/8-16 X 1 HH GR5	4
6.	72062103	NUT - 3/8-16 LOCK	4
7.	72062106	NUT - #10-24 LOCK	16
8.	72063002	WASHER - 5/16 WRT	4
9.	72601283	MACH SCREW - #10-24 X 1/2 PANHDSLT	8
10.	72601284	MACH SCREW - #10-24 X 5/8 FLTHDSLT	8

**DRAWER SET  
51706978**

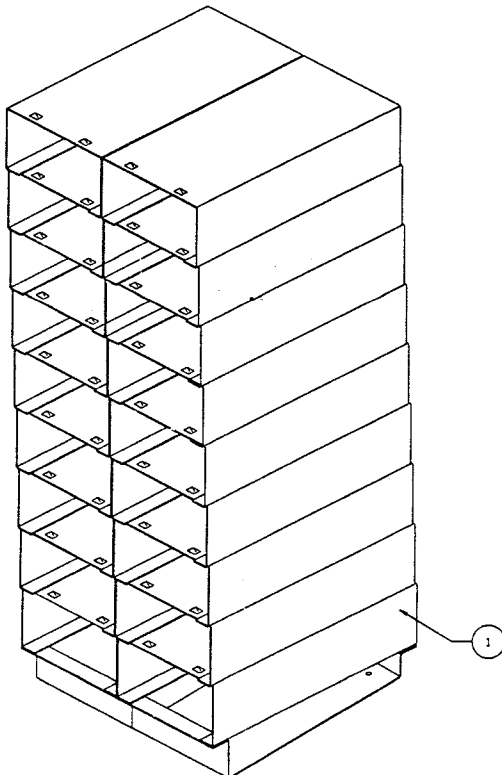
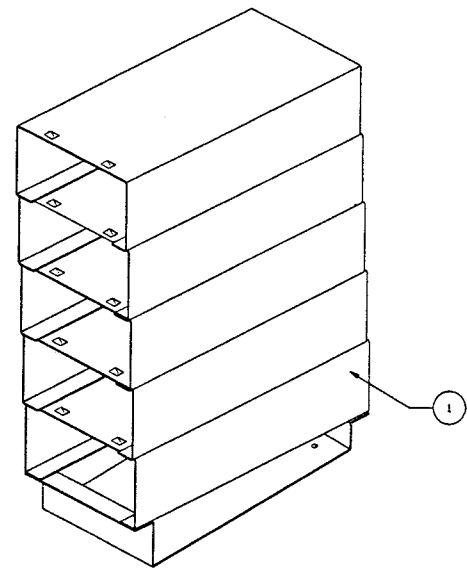
ITEM	PART NO.	DESCRIPTION	QTY
1.	52710274	DRAWER	1
2.	60114979	DIVIDER	3
3.	60114952	CABINET	1


**4-DRAWER SET WITH RISER 51704193  
5-DRAWER SET WITH RISER 51704194**

1.	52710227	CABINET - 4 DRAWER
	52710226	CABINET - 5 DRAWER
2.	52710274	DRAWER
3.	60114979	DIVIDER
4.	72060002	CAP SCREW 1/4-20 x 3/4 HH GR5
5.	72062104	NUT 1/4-20 LOCK
6.	72063001	WASHER 1/4 WRT

**4-DRWR 5-DRWR**

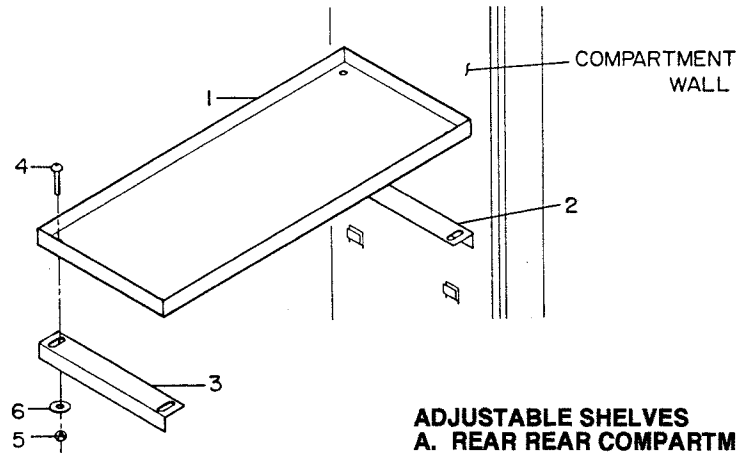
1	1
4	5
12	15
4	4
4	4
8	8


**16-DRAWER SET WITH RISER 51709946  
18-DRAWER SET WITH RISER 51704282**

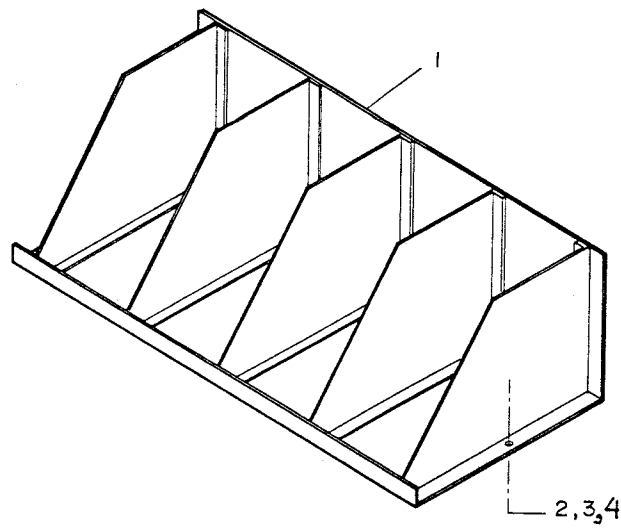
1.	52710235	CABINET
	52710234	CABINET
2.	52710274	DRAWER
3.	60114979	DIVIDER
4.	72060002	CAP SCR 1/4-20X3/4 HH GR5
5.	72062104	NUT 1/4-20 LOCK
6.	72063001	WASHER 1/4 WRT

16-DRWR	18-DRWR
1	1
16	18
48	54
8	8
8	8
16	16





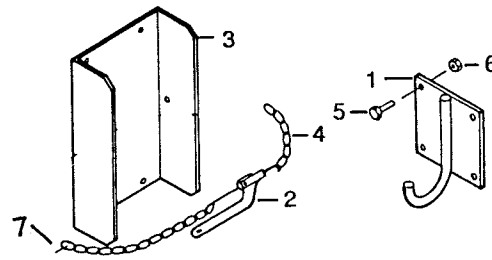
ADJUSTABLE SHELVES							
A. REAR REAR COMPARTMENT			51706873				
B. HORIZONTAL COMPARTMENTS			51709672				
C. LEFT REAR COMPARTMENT			51709550				
D. LEFT FRONT & RT VERT COMPARTMENTS			51707061				
E. LEFT FRONT COMPARTMENT			51707170				
			A	B	C	D	E
1.	60114596	SHELF 17 X 23	1				
	60114623	SHELF 17 X 49		1			
	60114597	SHELF 17 X 26			1		
	60114595	SHELF 17 X 20				1	
	60114598	SHELF 17 X 28					1
2.	60110246	SHELF END - LH	1	1	1	1	1
3.	60110247	SHELF END - RH	1	1	1	1	1
4.	72060025	CAP SCR 5/16-18X1	4	4	4	4	4
5.	72062109	NUT 5/16-18 LOCK	4	4	4	4	4
6.	72063001	WASHER 1/4 WRT	4	4	4	4	4



BOOKSHELF ASSEMBLY 8H X 12D X 26L			51707629
BOOKSHELF ASSEMBLY 8H X 12D X 46L			51710102
ITEM	PART NO.	DESCRIPTION	QTY
1.	52704180	BOOKSHELF 26L	1
	52710113	BOOKSHELF 46L	1
2.	72060023	CAP SCR 5/16-18X3/4 HH GR5	2
3.	72062109	NUT - 5/16-18 LOCK	2
4.	72063002	WASHER 5/16 WRT	4

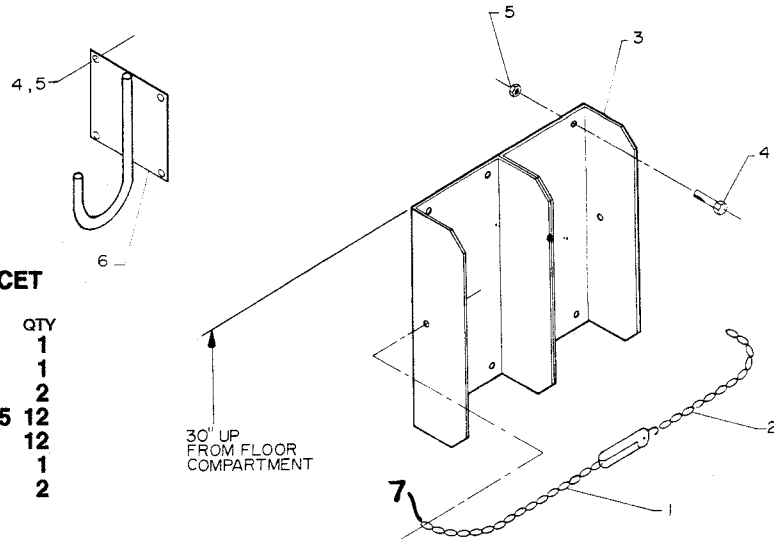
### TANK BRACKET ASSEMBLY - 1 TANK OXY/ACET 51709718

ITEM	PART NO.	DESCRIPTION	QTY
1.	52704224	J-HOOK	1
2.	52705351	CHAIN/BINDER	1
3.	60108389	BOTTLE HOLDER	1
4.	60113409	CHAIN	1
5.	72060023	CAP SCR 5/16-18X.75 HH GR5	8
6.	72062109	NUT - 5/16-18 LOCK	8
7.	70058959	CHAIN CONNECTOR 3/16	2



### TANK BRACKET ASSEMBLY - 2 TANK OXY/ACET 51705349

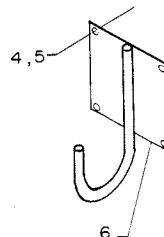
ITEM	PART NO.	DESCRIPTION	QTY
1.	52705351	CHAIN/BINDER	1
2.	60108597	CHAIN	1
3.	60108389	BOTTLE HOLDER	2
4.	72060023	CAP SCR 5/16-18X.75 HH GR5	12
5.	72062109	NUT - 5/16-18 LOCK	12
6.	52704224	J-HOOK	1
7.	70058959	CHAIN CONNECTOR 3/16	2



### HOOK KIT - BOLT IN

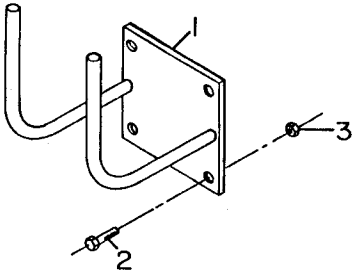
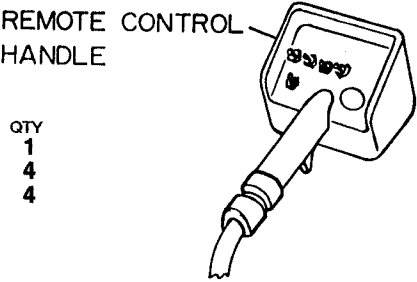
51706696

ITEM	PART NO.	DESCRIPTION	QTY
4.	72060023	CAP SCR 5/16-18X.75 HH GR5	12
5.	72062109	NUT - 5/16-18 LOCK	12
6.	52704224	J-HOOK	1

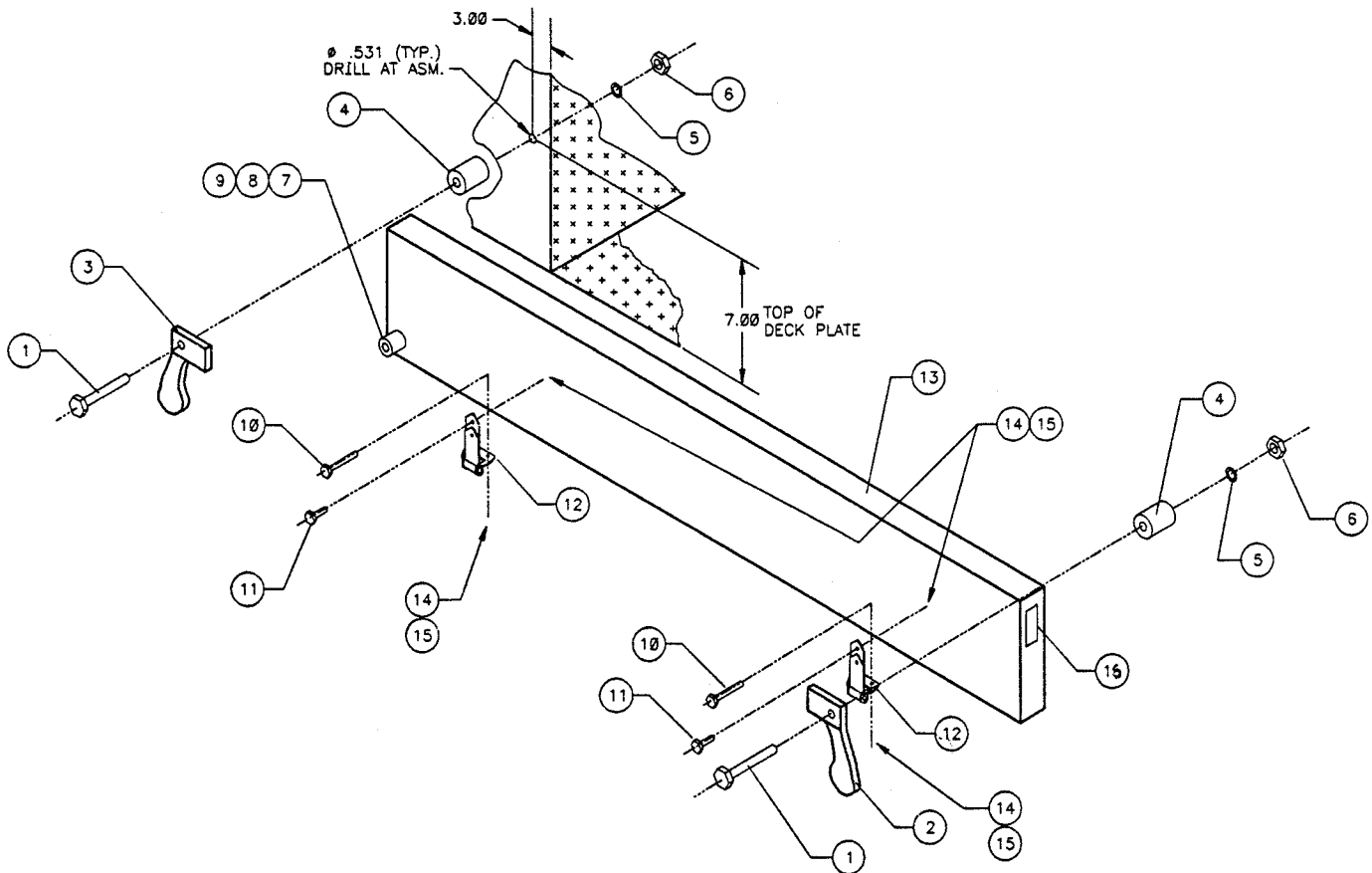


**REMOTE CONTROL HANDLE HANGER KIT  
51707765**

ITEM	PART NO.	DESCRIPTION	QTY
1.	52704166	HANGER BRACKET	1
2.	72060023	CAP SCR 5/16-18X3/4 HH GR5	4
3.	72062109	NUT 5/16-18 LOCK	4

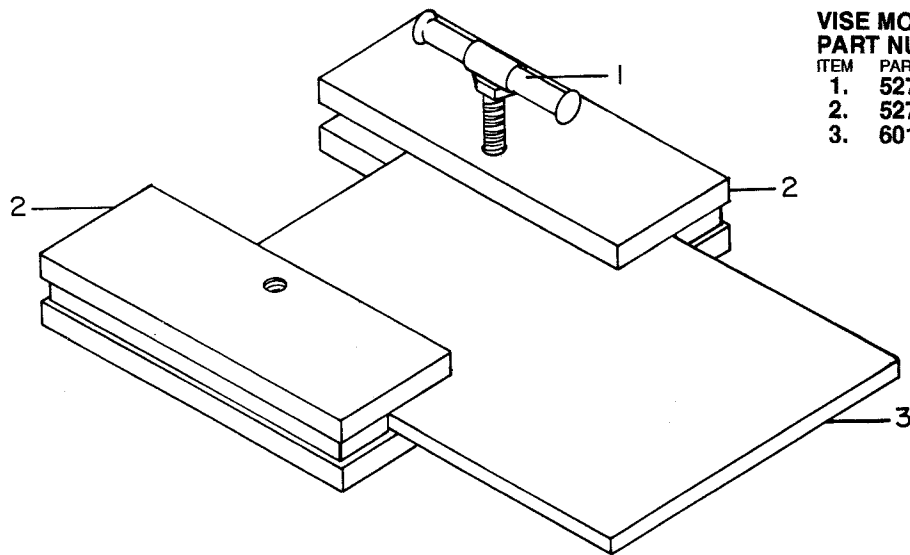


## Section 4. TAILGATE AND BUMPER OPTIONS



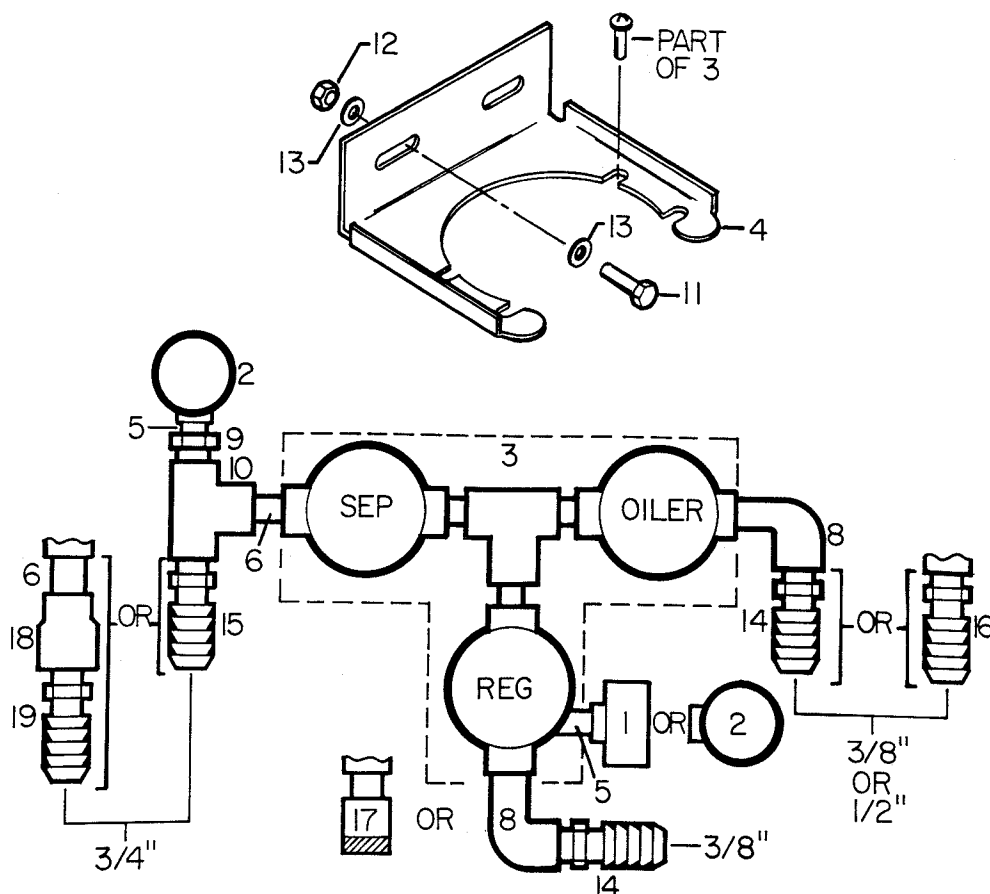
### TAILGATE ASSEMBLY 51708824

ITEM	PART NO.	DESCRIPTION	QTY
1.	72060097	CAP SCR 1/2-13X3 HH GR5	2
2.	72066369	LATCH - RH	1
3.	72066368	LATCH - LH	1
4.	60030228	SPACER 3/4	2
5.	72063005	WASHER 1/2 WRT	2
6.	72062080	NUT 1/2-13 LOCK	2
7.	76039990	RUBBER BUMPER	1
8.	72060636	MACH SCR #10-24X3/4 RDHD	1
9.	72062106	NUT #10-24 LOCK	1
10.	72060017	CAP SCR 1/4-20X4-1/2 HH GR5	4
11.	72601652	CAP SCR 1/4-20X3/4 TORX SS	4
12.	72661383	HINGE-SS	2
13.	60115069	TAILGATE PANEL	1
14.	72063166	WASHER .25 SS	8
15.	72062194	NUT 1/4-20 LOCK-SS	8
16.	70034386	WEAR STRIP 3.19 LG	2

**WISE MOUNTING BRACKET KIT****PART NUMBER 51705646**

ITEM	PART NO.	DESCRIPTION	QTY
1.	52705647	TIGHTENER BOLT	2
2.	52705648	SLIDE	2
3.	60108684	PLATE	1

## Section 6. AIR SYSTEM OPTIONS



### MOISTURE SEPARATOR/REGULATOR/OILER ASSEMBLIES

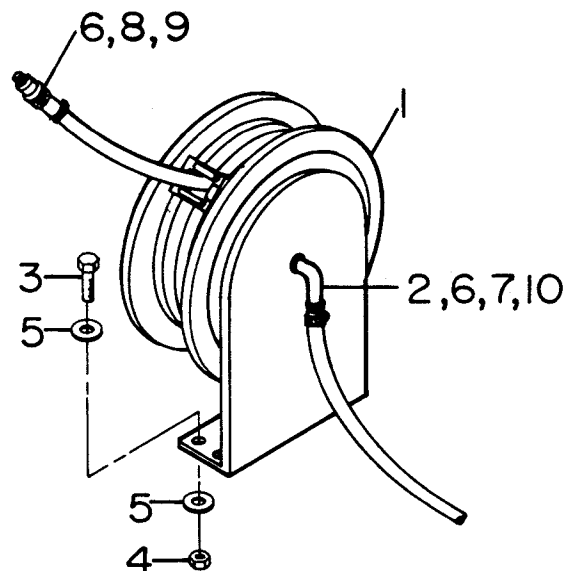
3/8" HOSE REEL	51706341
1/2" HOSE REEL	51706342
3/8" & 1/2" HOSE REEL	51706343

- |     |          |   |
|-----|----------|---|
| 1.  | 70048015 | AIR PRESSURE GAUGE - 300 PSI REAR MOUNT |
| 2.  | 70048036 | AIR PRESSURE GAUGE - 300 PSI SIDE MOUNT |
| 3.  | 70073439 | SEP / REG / OILER ASSEMBLY              |
| 4.  | 70141473 | MOUNTING BRACKET                        |
| 5.  | 72053013 | PIPE NIPPLE - 1/4 X CLOSE               |
| 6.  | 72053090 | PIPE NIPPLE - 1/2 X CLOSE               |
| 7.  | 72053243 | PIPE PLUG - 1/2 HOL HEX                 |
| 8.  | 72053284 | STREET ELBOW - 1/2 X 90 DEG             |
| 9.  | 72053374 | REDUCER BUSHING - 1/2 X 1/4             |
| 10. | 72053603 | TEE - 1/2                               |
| 11. | 72060004 | CAP SCREW 1/4-20 X 1 HH GR5             |
| 12. | 72062104 | NUT 1/4-20 LOCK                         |
| 13. | 72063001 | WASHER 1/4 WRT                          |
| 14. | 72531541 | BARBED NIPPLE - 1/2 MPT X 3/8 BARB      |
| 15. | 72531547 | BARBED NIPPLE - 1/2 MPT X 3/4 BARB      |
| 16. | 72053457 | BARBED NIPPLE - 1/2 MPT X 1/2 BARB      |
| 17. | 72532021 | QUICK COUPLER - 1/4                     |
| 18. | 72053435 | REDUCER COUPLING - 3/4 X 1/2            |
| 19. | 72053458 | BARBED NIPPLE - 3/4 MPT X 3/4 BARB      |

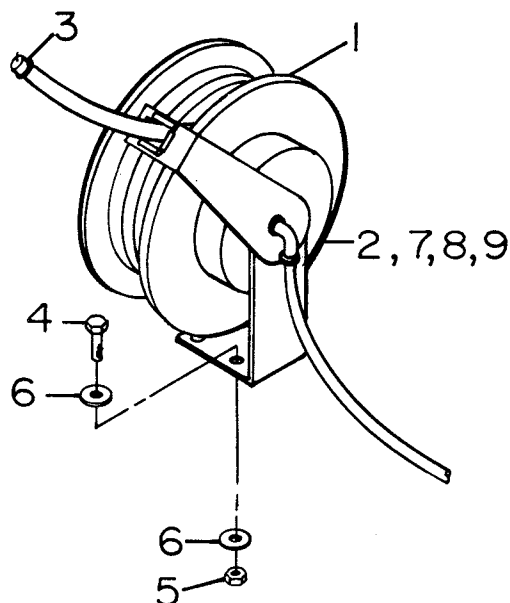
NOTE: EACH INSTALLATION MAY VARY, USE THE PARTS LIST AND THE DRAWING AS A GUIDE ONLY.

**HOSE REEL KIT - 3/8" X 35' HOSE****51706348**

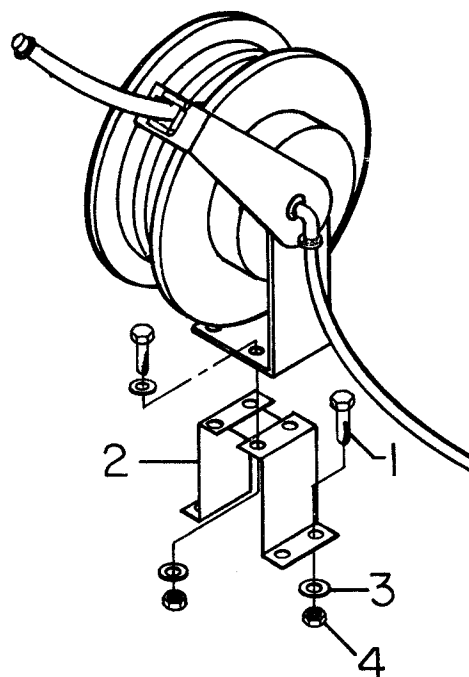
ITEM	PART NO.	DESCRIPTION	QTY
1.	70073625	HOSE REEL	1
2.	72053283	STREET ELBOW 3/8NPT 90°	1
3.	72060004	CAP SCR 1/4-20X1 HH GR5	4
4.	72062104	NUT 1/4-20 LOCK	4
5.	72063001	WASHER 1/4 WRT	8
6.	72066004	HOSE CLAMP	2
7.	72531540	BARB NIPPLE 3/8MPT 3/8HOSE	1
8.	72532021	QUICK DISCONNECT 1/4FPT	1
9.	72532038	NIPPLE - DISCONNECT 1/4FPT	1
10.	89039171	AIR HOSE - 3/8	36"

**HOSE REEL KIT - 1/2 X 50' HOSE****51706347**

ITEM	PART NO.	DESCRIPTION	QTY
1.	70732096	HOSE REEL	1
2.	72053284	STREET ELBOW 1/2NPTX90°	1
3.	72053810	PIPE CAP 1/2NPT	1
4.	72060046	CAP SCR 3/8-16X1 HH GR5	4
5.	72062103	NUT 3/8-16 LOCK	4
6.	72063003	WASHER 3/8 WRT	8
7.	72066004	HOSE CLAMP	2
8.	72053457	BARB NIPPLE 1/2NPT 1/2HOSE	2
9.	89392602	HOSE - 200 PSI 1/2	36"

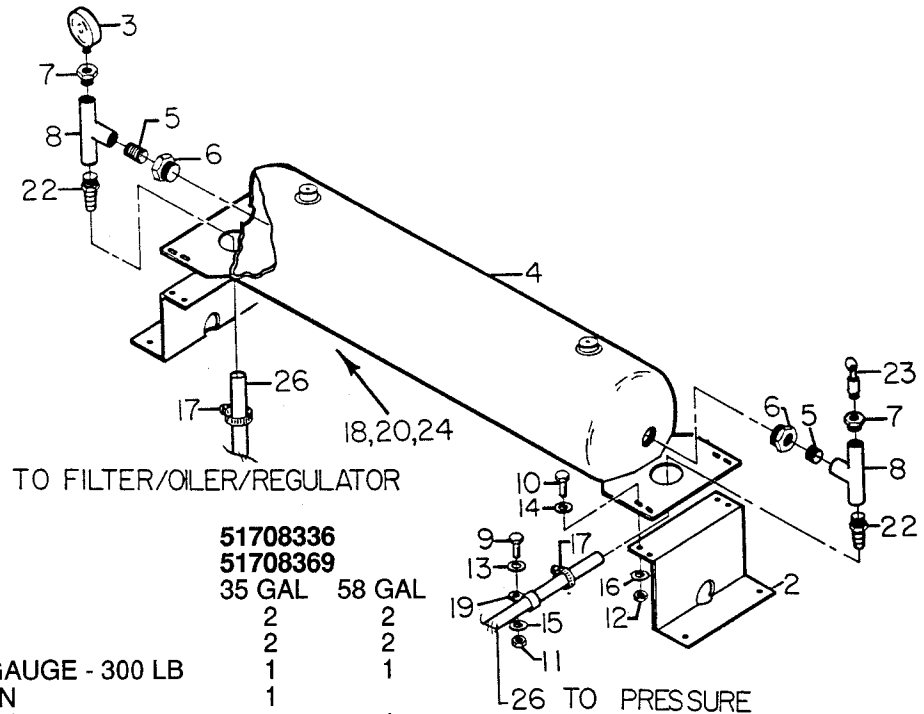
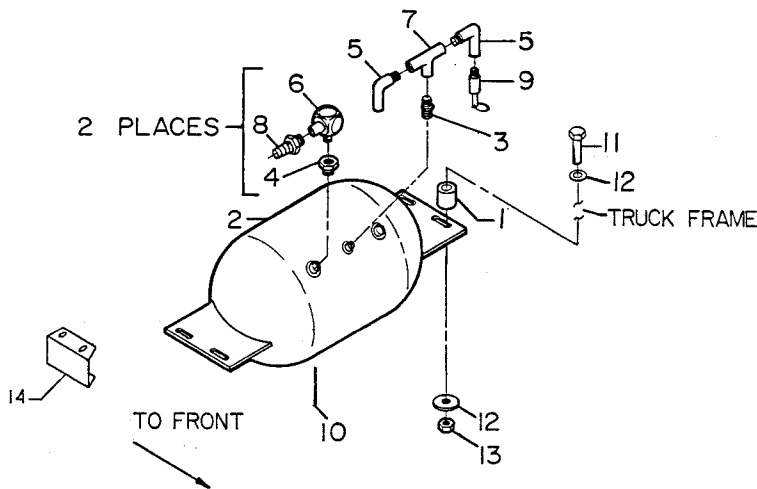
**HOSE REEL STAND****51708337**

ITEM	PART NO.	DESCRIPTION	QTY
1.	72060025	CAP SCR 5/16-18X1 HH GR5	4
2.	52706304	MOUNTING BRACKET	1
3.	72063002	WASHER 5/16 WRT	4
4.	72062109	NUT 5/16-18 LOCK	4



**AIR TANK KIT - 22 1/2 GALLON****51706697**

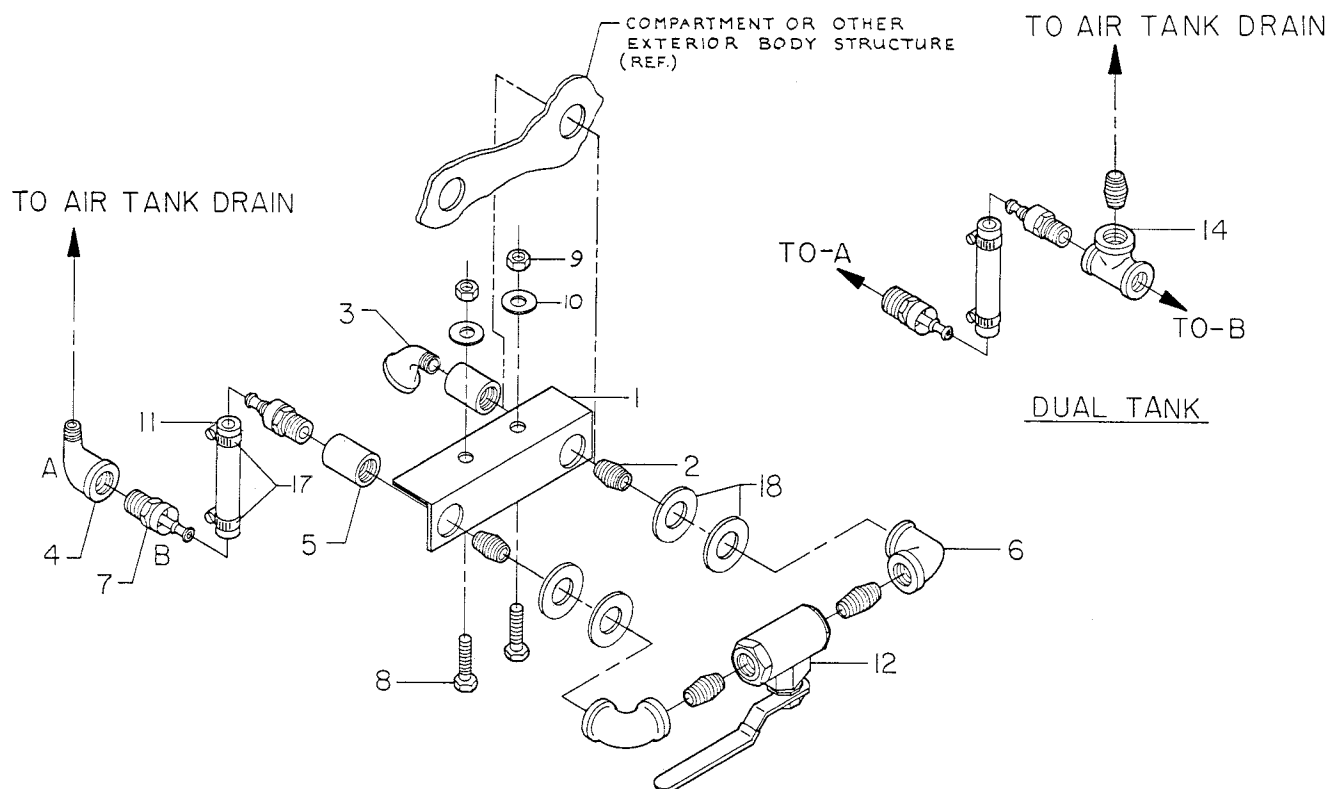
ITEM	PART NO.	DESCRIPTION	QTY
1.	60113720	SLEEVE	4
2.	70731788	AIR TANK - 22 1/2 GALLON	1
3.	72053517	ADAPTER - 1/4 MPT 1/4 MPT HEX	1
4.	72531836	REDUCER BUSHING 1 1/4 X 3/4	2
5.	72531131	STREET ELBOW 1/4 X 90 DEG	2
6.	72053556	STREET ELBOW 3/4 X 90 DEG	2
7.	72053610	TEE 1/4	1
8.	72532559	HOSE FITTING 3/4 3/4	4
9.	73054032	SAFETY VALVE 1/4 200 PSI	1
10.	51709358	DRAIN ASM (INCL: 1) (SEE DWG)	1
11.	72060092	CAP SCREW 1/2-13 X 1 1/4 HH GR5	4
12.	72063005	WASHER 1/2 WRT	8
13.	72062080	NUT 1/2-13 LOCK	4
14.	60113718	SPACER BRACKET	2

**35 GALLON AIR TANK KIT  
58 GALLON AIR TANK KIT****51708336****51708369**

35 GAL 58 GAL

1.	60025153	BACK PLATE	2	2
2.	60112258	BRACKET	2	2
3.	70048036	AIR PRESSURE GAUGE - 300 LB	1	1
4.	70073063	TANK - 35 GALLON	1	
	70073808	TANK - 58 GALLON		1
5.	72053141	PIPE NIPPLE 3/4 X CLOSE	2	2
6.	72053180	REDUCER BUSHING 1 1/4 X 3/4	2	2
7.	72053527	REDUCER BUSHING 3/4 X 1/4	2	2
8.	72053604	TEE 3/4	2	2
9.	72060002	CAP SCREW 1/4-20 X 3/4 HH GR5	9	9
10.	72060046	CAP SCREW 3/8-16 X 1 HH GR5	12	12
11.	72062000	NUT 1/4-20 HEX	6	6
12.	72062002	NUT 3/8-16 HEX	12	12
13.	72063001	WASHER 1/4 WRT	6	6
14.	72063003	WASHER 3/8 WRT	12	12
15.	72063049	WASHER 1/4 LOCK	9	9
16.	72063051	WASHER 3/8 LOCK	12	12
17.	72066000	HOSE CLAMP SAE #12	2	2
18.	72066340	POP RIVET 1/8	3	3
19.	72066525	HOSE CLAMP 3/4 VINYL	9	9
20.	72066534	HOSE CLAMP 1/4 VINYL	3	3
22.	72532832	HOSE FITTING 3/4 3/4	2	2
23.	73054032	SAFETY VALVE	1	1
24.	51709358	DRAIN ASM (SEE DWG)	1	1
26.	89392349	HOSE 3/4 200 PSI X 31 FT	1	1

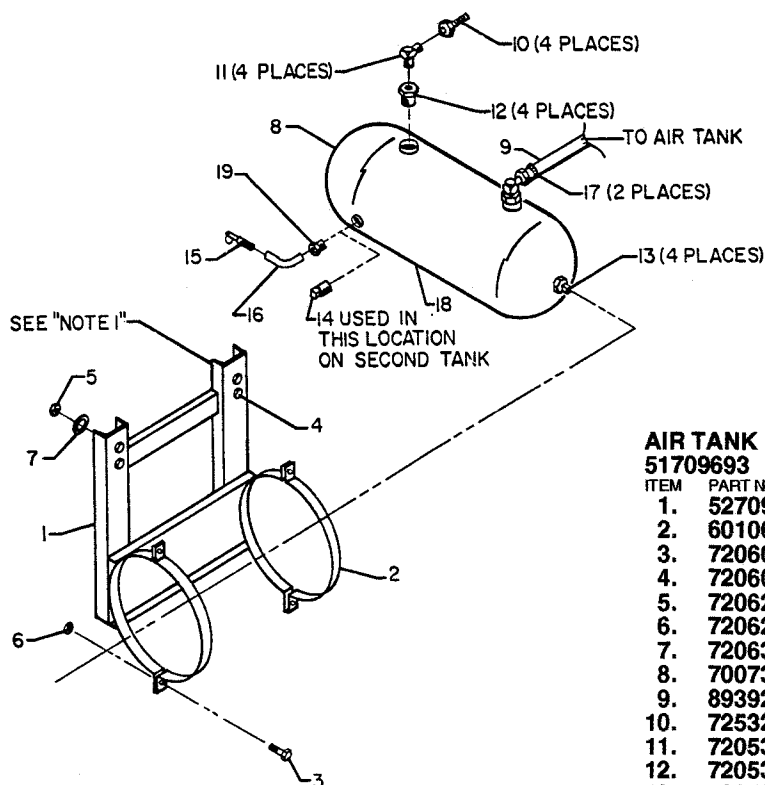




### AIR TANK DRAIN ASSEMBLY 51709358

ITEM	PART NO.	DESCRIPTION	QTY
1.	60116097	MOUNTING BRACKET	1
2.	72053141	PIPE NIPPLE 3/4NPT X CLOSE	5
3.	72053173	STREET ELBOW 3/4NPT 45°	1
4.	72053285	STREET ELBOW 3/4NPT 90°	1
5.	72053305	COUPLING 3/4NPT	2
6.	72053325	ELBOW 3/4NPT 90°	2
7.	72053458	BARBED NIPPLE 3/4 MPT 3/4	3
8.	72060025	CAP SCREW 5/16-18X1 HH GR5	2
9.	72062109	NUT 5/16-18 LOCK	2
10.	72063002	WASHER 5/16 WRT	2
11.	89392349	HOSE 3/4 300 PSI X 120"	1
12.	73054626	BALL VALVE 3/4NPT	1
13.	70391601	DECAL-AIR TANK DRAIN	1
14.	72053604	TEE 3/4	1
15.	72066340	POP RIVET 1/8X3/8 GRIP ALUM.	1
16.	72066525	HOSE CLAMP 3/4 VINYL	1
17.	72066000	HOSE CLAMP #12	2
18.	72063066	WASHER 1" FLAT (AS NEEDED)	8

NOTE: INSTALLATION MAY VARY DUE TO APPLICATION.  
THIS ASSEMBLY IS PART OF MOST AIR TANK KITS.



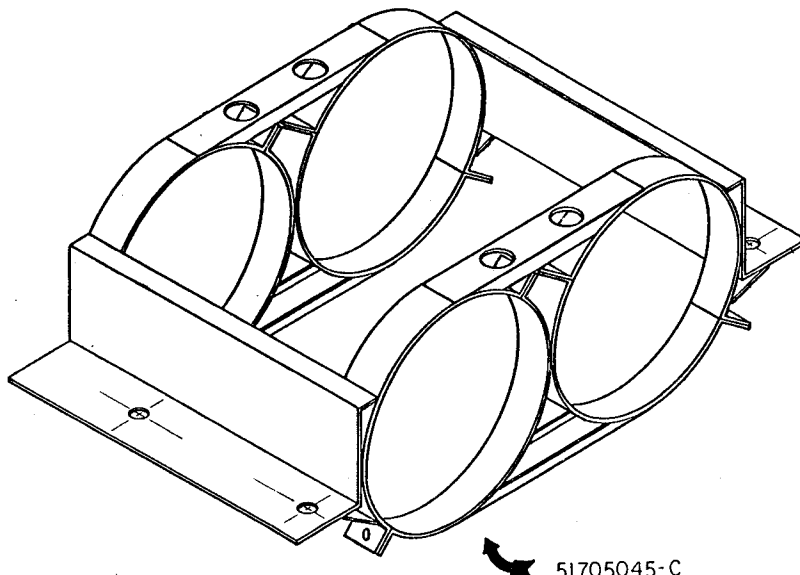
### AIR TANK KIT - DUAL 15-GALLON UNDER FRAME 51709693

ITEM	PART NO.	DESCRIPTION	QTY
1.	52709697	TANK BRACKET	2
2.	60106492	CLAMP BRACKET	4
3.	72060048	CAP SCR 3/8-16X1-1/2 HH GR5	8
4.	72060096	CAP SCR 1/2-13X2-1/2 HH GR5	8
5.	72062080	NUT 1/2-13 LOCK	8
6.	72062103	NUT 3/8-16 LOCK	8
7.	72063005	WASHER 1/2 WRT	16
8.	70073062	TANK 15-GALLON	2
9.	89392349	HOSE 3/4 GP 200PSI	8'
10.	72532559	HOSE FITTING 3/4 3/4	4
11.	72053556	STRT ELBOW 3/4NPT 90°	4
12.	72053180	REDUCER BUSHING 1-1/4 3/4	4
13.	72053397	PIPE PLUG 1-1/4 HOLHEX	4
14.	72053246	PIPE PLUG 3/8 SQHD	1
15.	73054032	SAFETY VALVE 1/4 200PSI	1
16.	72053282	STRT ELBOW 1/4NPT 90°	1
17.	72066000	HOSE CLAMP 1/2-1-1/4	2
18.	51709358	DRAIN ASM	1
19.	72053372	REDUCER BUSHING 3/8-1/4	1

NOTE 1: DRILL HOLES AT ASSEMBLY.

### AIR TANK KIT - DUAL 15-GALLON INSIDE FRAME 51707363

ITEM	PART NO.	DESCRIPTION	QTY
1.	51705045	TANK MOUNTING BRACKET	1
2.	70073062	AIR TANK	2
3.	72053180	REDUCER BUSHING 1-1/4 3/4	4
4.	72053556	STRT ELBOW 3/4 90°	4
5.	72532559	HOSE FITTING 3/4 3/4	4
6.	72066000	HOSE CLAMP 1/2-1 1/4	2
7.	89392349	HOSE 3/4 GRAY PUSH-LOCK	7'
8.	73054032	SAFETY VALVE 1/4 200PSI	1
9.	51709358	AIR TANK DRAIN ASM	1
10.	72053282	STRT ELBOW 1/4NPT 90°	1
11.	72060048	CAP SCR 3/8-16X1-1/2 HH GR5	4
12.	72063003	WASHER 3/8 WRT	8
13.	72062103	NUT 3/8-16 LOCK	4
14.	72053397	PIPE PLUG 1-1/4 HOLHEX	4
15.	72053246	PIPE PLUG 3/8 SQHD	1
16.	72053372	REDUCER BUSHING 3/8-1/4	1

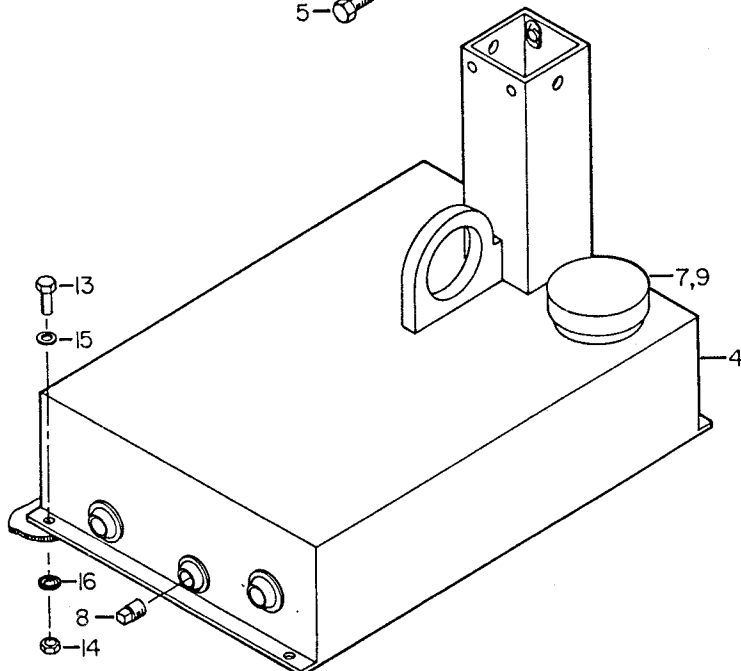
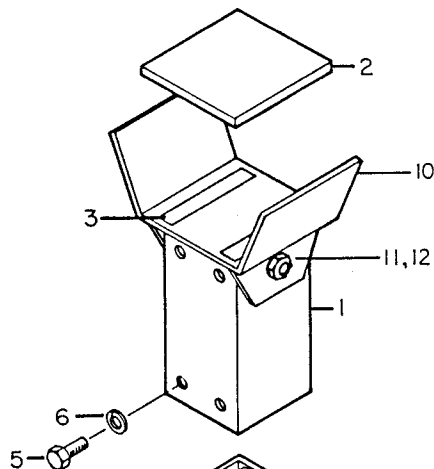
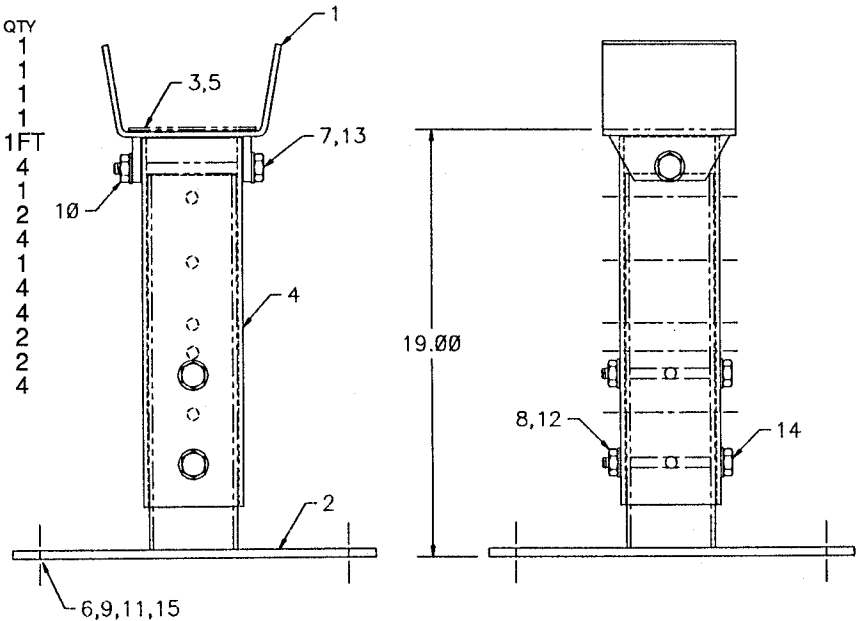


## Section 7. CRANE BOOM SUPPORTS / RESERVOIRS

### BOOM SUPPORT ASSEMBLY - ADJUSTABLE 19"-31"

51708161

ITEM	PART NO.	DESCRIPTION	QTY
1.	52705061	SADDLE	1
2.	52708159	PEDESTAL	1
3.	60030162	WEAR PAD	1
4.	60112040	TUBE	1
5.	70086054	TAPE 1" STRUCTURAL	1FT
6.	72060046	CAP SCR 3/8-16X1-1/4 HHGR5	4
7.	72060195	CAP SCR 3/4-10X7 HHGR5	1
8.	72062080	NUT 1/2-13 LOCK	2
9.	72062103	NUT 3/8-16 LOCK	4
10.	72062114	NUT 3/4-10 LOCK	1
11.	72063003	WASHER 3/8 WRT	4
12.	72063005	WASHER 1/2 WRT	4
13.	72063008	WASHER 3/4 WRT	2
14.	72601297	CAP SCR 1/2-13X5-3/4	2
15.	76392821	WASHER 3/8 BONDED	4



### RESERVOIR ASSEMBLY - BOOM SUPPORT

51705060

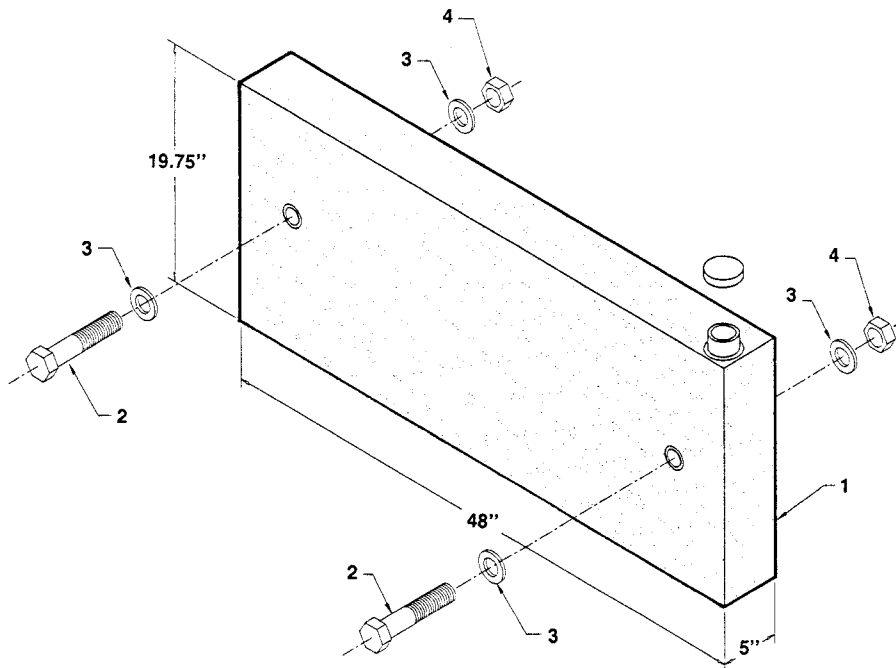
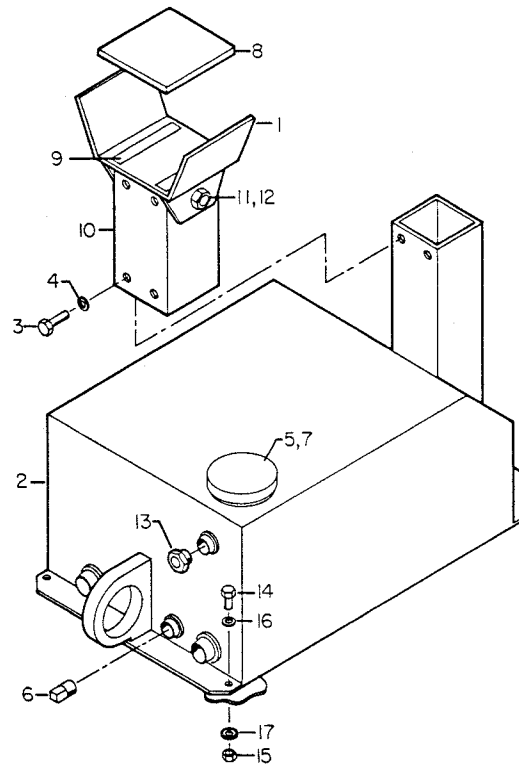
ITEM	PART NO.	DESCRIPTION	QTY
1.	60109252	TUBE	1
2.	60030162	WEAR PAD	1
3.	70086054	TAPE - 24"	1
4.	52704207	RESERVOIR	1
5.	72060092	CAP SCR 1/2-13X1 1/4 HH GR5	4
6.	72063053	WASHER 1/2 LOCK	4
7.	73014671	FILL CAP	1
8.	73052001	PIPE PLUG 3/4MPT MAGNETIC	1
9.	73141276	FILL NECK SCREEN	1
10.	52705061	SADDLE	1
11.	72060195	CAP SCR 3/4-10X7 HH GR5	1
12.	72062114	NUT 3/4-10 LOCK	1
13.	72060046	CAP SCR 3/8-16X1 HH GR5	4
14.	72062103	NUT 3/8-16 LOCK	4
15.	72063003	WASHER 3/8 FLAT	4
16.	76392821	THREAD SEAL 3/8	4
17.	73052012	SUCTION FILTER	1*
18.	72053211	PIPE NIPPLE	1*

\* ITEMS 17 & 18 ARE SHIPPED LOOSE.

**RESERVOIR ASSEMBLY - 20 GALLON (REAR SADDLE)****51709333**

ITEM	PART NO.	DESCRIPTION	QTY
1.	52705061	SADDLE	1
2.	52707399	RESERVOIR	1
3.	72060092	CAP SCR 1/2-13X1-1/4 HH GR5	4
4.	72063053	WASHER 1/2 LOCK	4
5.	73014671	FILL CAP	1
6.	73052001	PIPE PLUG 3/4MPT MAGNETIC	1
7.	73141276	FILL NECK SCREEN	1
8.	60030162	WEAR PAD	1
9.	70086054	TAPE 12"	1
10.	60109252	TUBE	1
11.	72060195	CAP SCR 3/4-10X7 HH GR5	1
12.	72062114	NUT 3/4-10 LOCK	1
13.	72532261	SIGHT GAUGE 3/4	1
14.	72060046	CAP SCR 3/8-16X1 HH GR5	4
15.	72062103	NUT 3/8-16 LOCK	4
16.	72063003	WASHER 3/8 WRT	4
17.	76392821	THREAD SEAL 3/8	4
18.	73052012	SUCTION FILTER	1*
19.	72053211	PIPE NIPPLE	1*

\* ITEMS 18 &amp; 19 ARE SHIPPED LOOSE.

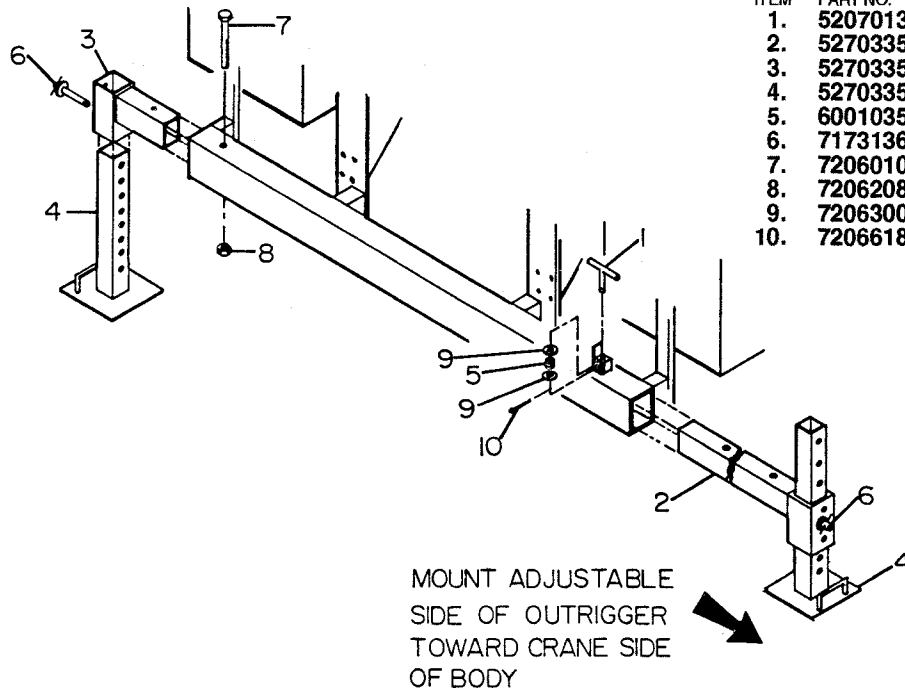
**RESERVOIR ASSEMBLY - 20 GALLON****51707798**

ITEM	PART NO.	DESCRIPTION	QTY
1.	70732581	RESERVOIR	1
2.	72060140	CAP SCR 1/2-13X6-1/2 HH GR5	2
3.	72063005	WASHER 1/2 WRT	4
4.	72062080	NUT 1/2-13 LOCK	2

## Section 8. OUTRIGGER KITS

### MANUAL OUTRIGGER KIT 51704772

ITEM	PART NO.	DESCRIPTION	QTY
1.	52070138	T-PIN	1
2.	52703351	ADJUSTABLE ARM	1
3.	52703352	STATIONARY ARM	1
4.	52703353	OUTRIGGER LEG	2
5.	60010351	SPRING	1
6.	71731361	QUICK RELEASE PIN 3/4	2
7.	72060105	CAP SCR 1/2-13X7 HH GR5	1
8.	72062080	NUT 1/2-13 LOCK	1
9.	72063007	WASHER 5/8 WRT	1
10.	72066185	COTTER PIN 1/6 X 1	1



## Section 9. ELECTRICAL OPTIONS

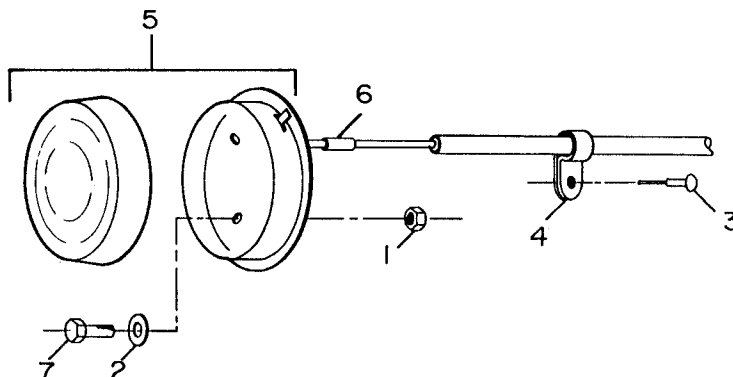
9-3

11M925-REV0:10-1-91

### COMPARTMENT LIGHT KIT-12VDC

51706356

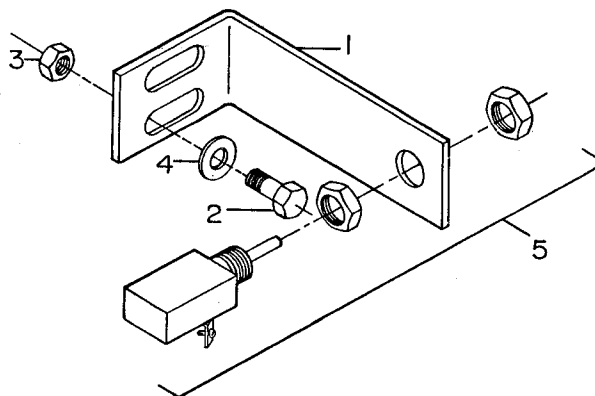
ITEM	PART NO.	DESCRIPTION	QTY
1.	72062106	NUT #10-24 LOCK	3
2.	72063123	WASHER #10-24 WRT	6
3.	72066340	POP RIVET 1/8 X 3/8	10
4.	72066534	CLAMP - VINYL	10
5.	77040017	LIGHT	1
6.	77040049	BUTT CONNECTOR	1
7.	72601284	MACH SCREW #10-24X5/8	3
8.	89044234	WIRE 14GA YELLOW X 180"	1
9.	89044351	LOOM .33 ID X 180"	1



### DOOR ACTIVATED SWITCH KIT

51707400

ITEM	PART NO.	DESCRIPTION	QTY
1.	60111003	BRACKET	1
2.	72060004	CAP SCR 1/4-20X1 HH GR5	2
3.	72062104	NUT 1/4-20 LOCK	2
4.	72063001	WASHER 1/4 WRT	4
5.	77041015	SWITCH	1
6.	77040048	BUTT CONNECTOR	2
7.	77040051	TERMINAL	2



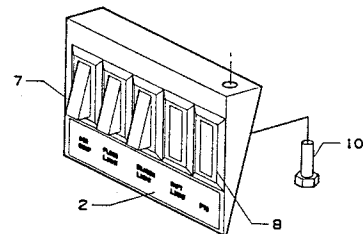
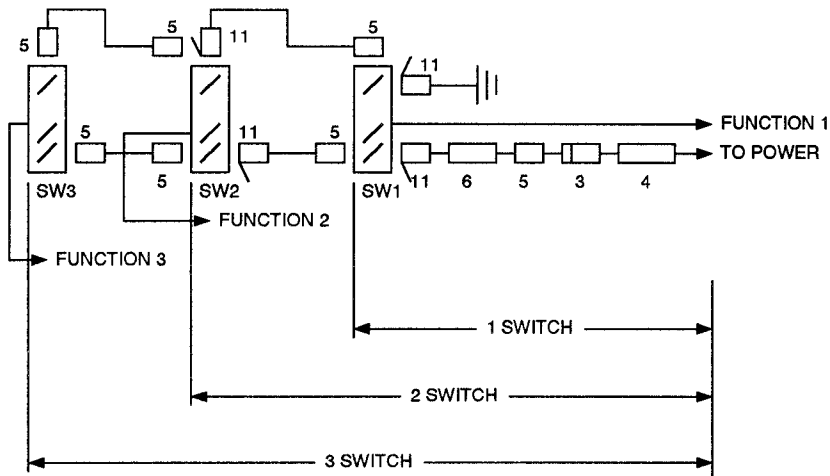
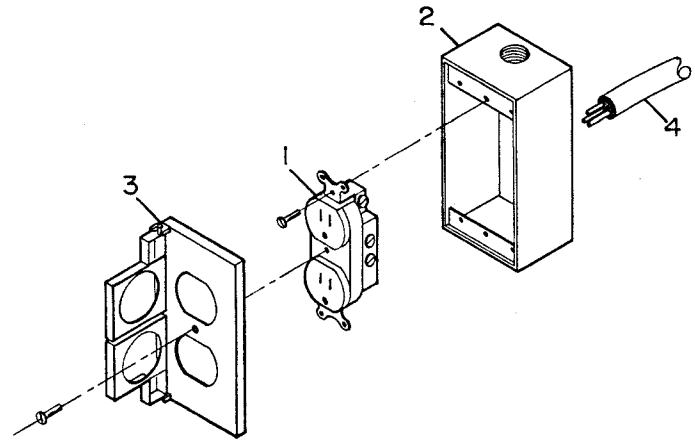
### CONDUIT KIT

51708909

ITEM	PART NO.	DESCRIPTION	QTY
1.	72060932	CAP SCR 5/8-11X3-1/4 HH GR5	3
2.	72661312	CLAMP 1/2	3
3.	77044074	COVER 4 X 4	2
4.	77044075	CONNECTOR 1/2 LIQUID TIGHT	2
5.	77044081	ELECTRICAL BOX 4 X 4	2
6.	77044099	CONNECTOR	2
7.	83044000	CONDUIT 1/2 EMT	264"

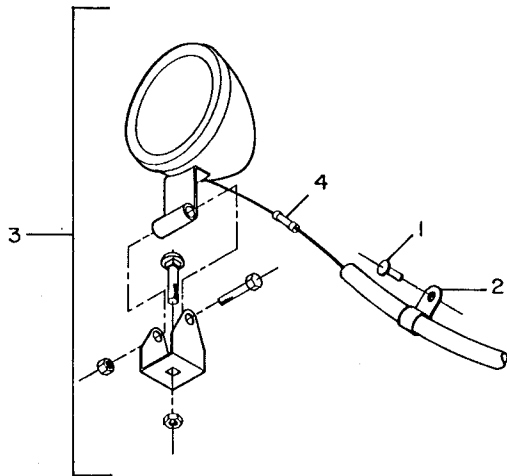
**OUTLET KIT - 110 VOLT****51707760**

ITEM	PART NO.	DESCRIPTION	QTY
1.	77044102	RECEPTACLE WITH GROUND	1
2.	77044106	WEATHER PROOF BOX	1
3.	77044251	WEATHER PROOF COVER	1
4.	89044072	CABLE 12GA/3 WIRE X 216"	1

**LIGHT SWITCH KITS****A. 1-SWITCH 51706353****B. 2-SWITCH 51706354****C. 3-SWITCH 51706355**

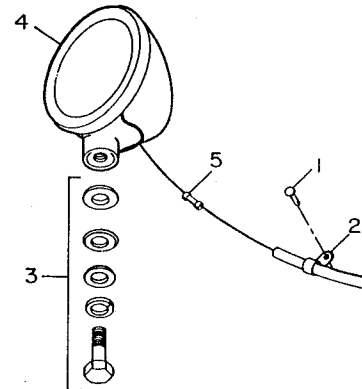
	A	B	C
1. 70034376 SWITCH BRACKET	1	1	1
2. 70393153 DECAL (SEE NOTE)	1	1	1
3. 77040047 TERMINAL-MSLPON 1/4 TAB	1	1	1
4. 77040048 BUTTCONNECTOR	1	1	1
5. 77040147 TERMINAL-FSLPON 1/4 TAB	3	5	7
6. 77041056 FUSE 20AMP IN-LINE	1	1	1
7. 77041386 SWITCH-SGL POLE LIT	1	2	3
8. 77041387 SWITCH PLATE-BLANK	4	3	2
9. 89044232 WIRE 14GA RED	SPEC LENGTH		
10. 72061144 SHT MTL SCR #10X1/2	2	2	2
11. 77040137 TERMINAL #12-10 1/4 TAB	2	4	
12. 89044274 WIRE 14GA BLK(GRD-NOT SHOWN)	SPEC LENGTH		
13. 89044271 WIRE 14GA BLU(NOT SHOWN)	SPEC LENGTH		
14. 77040053 TERMINAL RING (NOT SHOWN)	1	1	1

NOTE: DECAL (ITEM 2) PROVIDES 5 FUNCTIONS, CUT AS REQD.



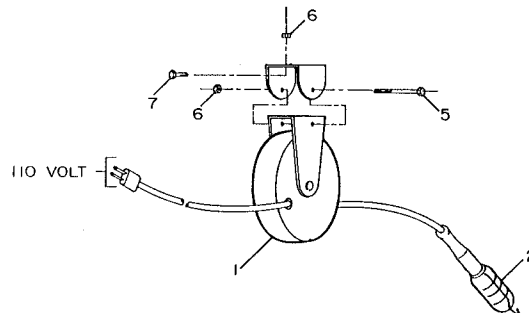
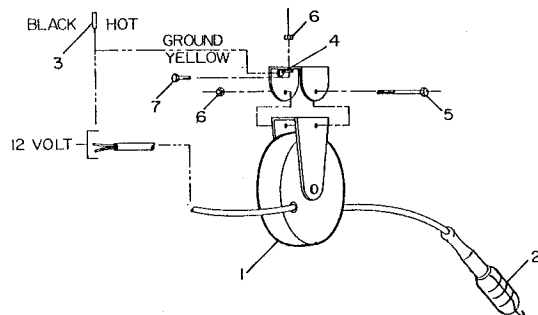
**FLOODLIGHT KIT - 12 VOLT - 5" DIAMETER**  
**51706357**

ITEM	PART NO.	DESCRIPTION	QTY
1.	72066340	POP RIVET 1/8 X 3/8	10
2.	72066534	CLAMP	10
3.	77040026	FLOOD LIGHT - BLACK	1
4.	77040049	BUTT CONNECTOR	1
5.	89044234	WIRE 14GA YELLOW X 180"	1
6.	89044351	LOOM .33 ID X 180"	1



**FLOODLIGHT KIT - 12 VOLT - 6 1/2" DIAMETER**  
**51707613**

ITEM	PART NO.	DESCRIPTION	QTY
1.	72066340	POP RIVET 1/8X3/8	10
2.	72066534	CLAMP	10
3.	77040280	MOUNTING KIT	1 REF
4.	77040281	FLOOD LIGHT - CHROME	1
5.	77040049	BUTT CONNECTOR	1
6.	89044234	WIRE 14GA YELLOW X 180"	1
7.	89044351	LOOM .33 ID X 180"	1



**LIGHT REEL KIT - 12 VOLT 51707758**  
**LIGHT REEL KIT - 110 VOLT 51707759**

		12V	110V
1.	77040187 REEL - 50'	1	1
2.	77040225 BULB - 12V	1	
	77040224 BULB - 120V 75W ROUGH SERVICE		1
3.	77040049 BUTT CONNECTOR	1	
4.	77040000 TERMINAL	1	
5.	72060012 CAP SCR 1/4-20X3 HH GR5	1	1
6.	72062104 NUT 1/4-20 LOCK	5	5
7.	72060002 CAP SCR 1/4-20X3/4 HH GR 5	2	2
8.	89044234 WIRE 14GA YELLOW X 96"	1	
9.	89044235 WIRE 14GA WHITE X 12"	1	
10.	89044072 WIRE 12GA/3 WIRE X 216"		1

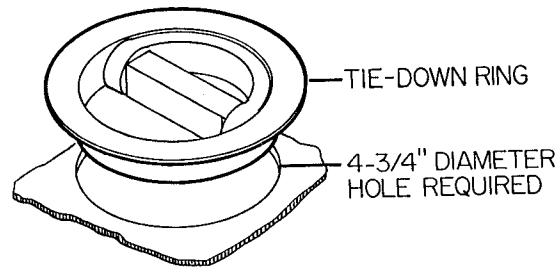
NOTE: REEM HOLES FOR CAP SCREWS TO 1/4" DIAMETER.



## Section 10. MISCELLANEOUS OPTIONS

### CARGO TIE-DOWN RING 72661303

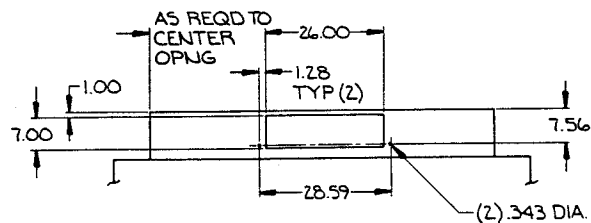
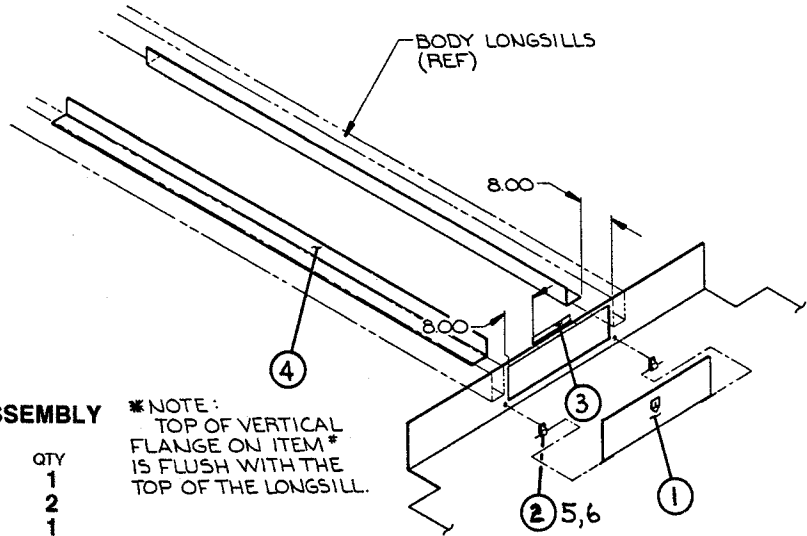
NOTE: WELD ALL AROUND  
OUTSIDE TOP SURFACE.



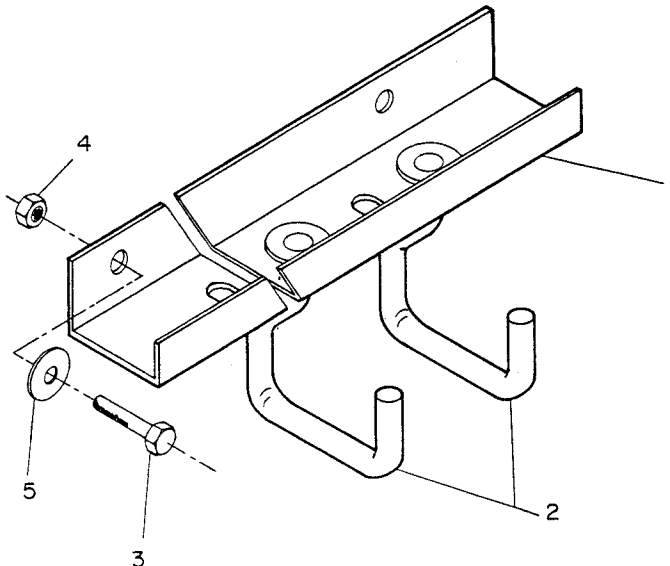
### UNDERDECK SALVAGE SYSTEM DOOR ASSEMBLY 51709873

ITEM	PART NO.	DESCRIPTION	QTY
1.	52709807	DOOR 8"	1
2.	60020053	HINGE	2
3.	60114056	ANGLE 12GA X 1.1	1
4.	60114155	ANGLE 14GA X 3.5	2
5.	72060027	CAP SCR 5/16-18 X 1-1/2 HH	2
6.	72062109	NUT 5/16-18 LOCK	2

\*NOTE:  
TOP OF VERTICAL  
FLANGE ON ITEM \*  
IS FLUSH WITH THE  
TOP OF THE LONGSILL.



DETAIL A



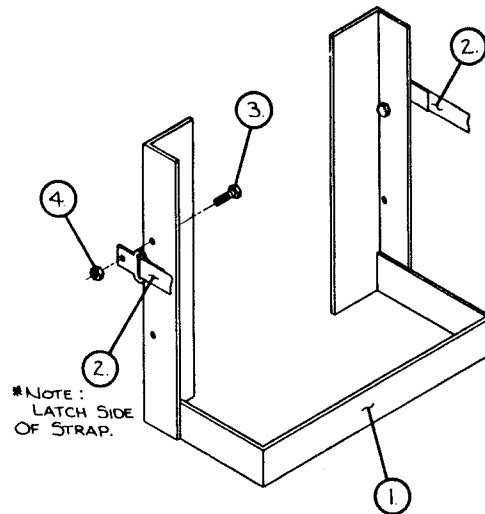
### HOOK ASSEMBLY - ADJUSTABLE 51707489

ITEM	PART NO.	DESCRIPTION	QTY
1.	60111134	HANGER BRACKET	1
2.	52707490	HOOK	2
3.	72060025	CAP SCR 5/16-18X1 HH GR5	2
4.	72062109	NUT 5/16-18 LOCK	2
5.	72063002	WASHER 5/16 WRT	2

# JERRY CAN HOLDER ASSEMBLY

## 51709838

ITEM	PART NO.	DESCRIPTION	QTY
1.	52709837	HOLDER	1
2.	70732352	STRAP ASM	1
3.	72060004	CAP SCR 1/4-20X1 HH GR5	2
4.	72062104	NUT 1/4-20 LOCK	2



## ADDITIONAL MISCELLANEOUS OPTIONS

TRAY-TORCH TIP HOLDER 52709828

CHAIN RACK 52709829

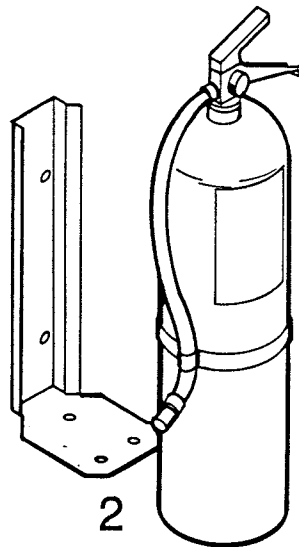
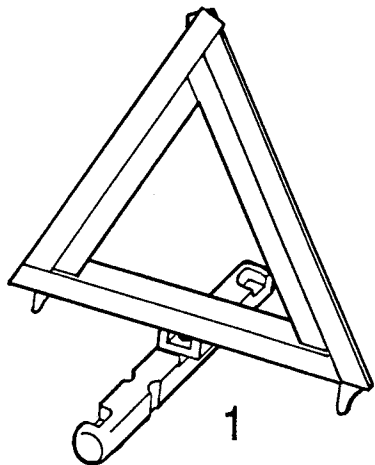
SIDE MOUNT RECESSED  
TIE-DOWN 52709830

CABLE STEP 7"H X 12"W 52709833

DOUBLE J-HOOK 52709945

SALVAGE KIT-36 GAL  
UNDERDECK 51709861

## Section 10A. SAFETY EQUIPMENT

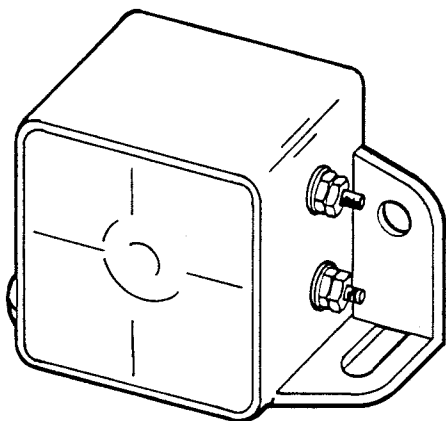


### I.C.C. SAFETY KIT PART NUMBER 92091010

- |             |                                  |   |
|-------------|----------------------------------|---|
| 1. 70073146 | TRIANGULAR REFLECTOR KIT         | 1 |
|             | (Includes 3 reflectors and case) |   |
| 2. 70073147 | FIRE EXTINGUISHER                | 1 |
|             | (with bracket)                   |   |

### INDIVIDUAL FIRE EXTINGUISHERS

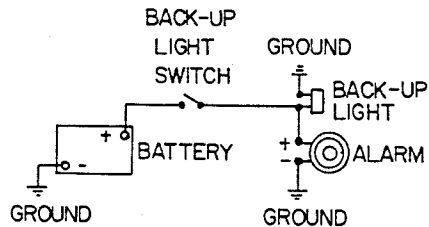
- |          |                                  |
|----------|----------------------------------|
| 70073622 | FIRE EXTINGUISHER - 10 LB W/BRKT |
| 70073091 | FIRE EXTINGUISHER - 20 LB W/BRKT |



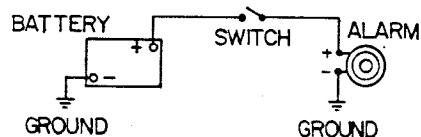
### ELECTRIC BACKUP ALARM PART NUMBER 77040020

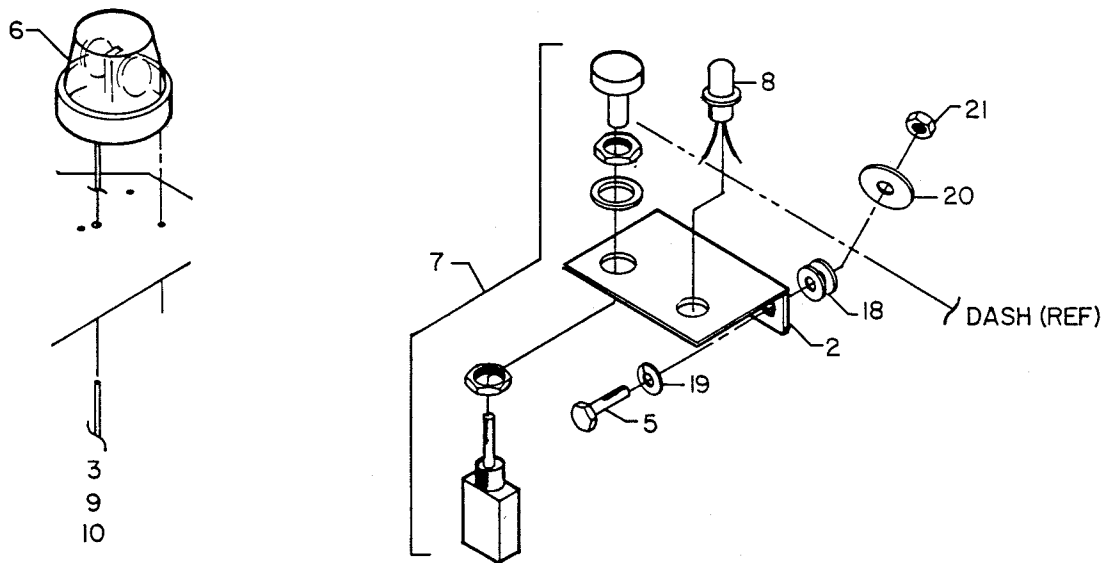
NOTE: USE 5/16" MOUNTING SCREWS AND LOCK NUTS (NOT INCLUDED).  
SEE INSTALLATION INSTRUCTIONS WHICH ACCOMPANY ALARM.

#### INSTALLATION WITH BACK-UP LIGHT NEGATIVE GROUND



#### INSTALLATION WITH SWITCH NEGATIVE GROUND





**ROTATING BEACON LIGHT - AMBER (INCLUDES MOUNTING KIT)  
77040013**

**NOTE: SEE INSTALLATION INSTRUCTIONS WHICH ACCOMPANY  
THE BEACON LIGHT.  
USE AN EXISTING SWITCH BRACKET OR THE INDIVIDUAL  
PARTS LISTED BELOW FOR SWITCH MOUNTING.**

2.	60103464	DASH BRACKET	1
3.	70034083	NYLON CLAMP - 7/16"	3
4.	70391251	DECAL-BEACON LIGHT	1
5.	72060004	CAP SCR 1/4-20X1 HH GR5	2
7.	77041014	PUSH/PULL SWITCH W/20AMP FUSE	1
8.	77042001	RED INDICATOR LIGHT	1
9.	89044001	WIRE 14 GA (SPECIFY LENGTH)	
10.	89044073	CONDUIT 1/2" FLEX (SPECIFY LENGTH)	
18.	72063001	WASHER 1/4 WRT	4
19.	72063049	WASHER 1/4 LOCK	2
20.	72063078	WASHER 5/16X1 5/8 O.D.	2
21.	72062000	NUT 1/4-20 HEX	2

The information within this manual has been compiled and checked but errors do occur. To provide our customers with a method of communicating those errors we have provided the Manual Change Request form below. In addition to error reporting, you are encouraged to suggest changes or additions to the manual which would be of benefit to you. We cannot guarantee that these additions will be made but we do promise to consider them. When completing the form, please write or print clearly. Submit a copy of the completed form to the address listed below.

# MANUAL CHANGE REQUEST

DATE	PRODUCT MANUAL	11M925	MANUAL PART NO.	99900623-10/91
SUBMITTED BY				
COMPANY				
ADDRESS				
CITY, STATE, ZIP				
TELEPHONE				

☐ ERROR FOUND

LOCATION OF ERROR (page no.): \_\_\_\_\_

DESCRIPTION OF ERROR: \_\_\_\_\_

\_\_\_\_\_

\_\_\_\_\_

\_\_\_\_\_

\_\_\_\_\_

\_\_\_\_\_

\_\_\_\_\_

\_\_\_\_\_

☐ REQUEST FOR ADDITION TO MANUAL

DESCRIPTION OF ADDITION: \_\_\_\_\_

\_\_\_\_\_

\_\_\_\_\_

\_\_\_\_\_

REASON FOR ADDITION: \_\_\_\_\_

\_\_\_\_\_

\_\_\_\_\_

\_\_\_\_\_

MAIL TO: IOWA MOLD TOOLING Co., Inc.  
Box 189,  
Garner IA 50438  
ATTN: Technical Publications

# MANUFACTURER'S LIMITED WARRANTY

**WARRANTY COVERAGE** - Products manufactured by Iowa Mold Tooling Co., Inc. (IMT) are warranted to be free from defects in material and workmanship, under proper use, application and maintenance in accordance with IMT's written recommendations, instructions and specifications as follows:

1. Ninety (90) days; labor on IMT workmanship from the date of delivery to the end user.
2. One (1) year; original IMT parts from the date of delivery to the end user.

IMT's obligation under this warranty is limited to, and the sole remedy for any such defect shall be the repair or replacement (at IMT's option) of unaltered parts returned to IMT, freight prepaid, provided such defect occurs within the above stated warranty period and is reported within fourteen (14) days of its occurrence.

**IMPLIED WARRANTY EXCLUDED** - This is the only authorized IMT warranty and is in lieu of all other express or implied warranties or representations, including any implied warranties of merchantability or fitness for any particular purpose or of any other obligations on the part of IMT.

**ITEMS EXCLUDED** - The manufacturer gives no warranty on any components or parts purchased by the manufacturer, and such components as are covered only by the warranties of their respective manufacturers.

**WARRANTY CLAIMS** - Warranty claims must be submitted and shall be processed in accordance with IMT's established warranty claim procedure.

**WARRANTY SERVICE** - Warranty service will be performed by any IMT distributor authorized to sell new IMT products of the type involved or by any IMT Service Center authorized to service the type of product involved or by IMT in the event of direct sales made by IMT. At the time of requesting warranty service, the purchaser must present evidence of the date of delivery of the product. The purchaser shall pay any premium for overtime labor requested by the purchaser, any charge for making service calls and for transporting the equipment to the place where warranty work is performed.

**WARRANTY VOIDED** - All obligations of IMT under this warranty shall be terminated: (1) if service other than normal maintenance or normal replacement of service items is performed by someone other than an authorized IMT dealer, (2) if product is modified or altered in ways not approved by IMT.

**PURCHASER'S RESPONSIBILITY** - This warranty covers only defective material and workmanship. It does not cover depreciation or damage caused by normal wear, accident, improper protection in storage, or improper use. The purchaser has the obligation of performing the care and maintenance duties discussed in IMT's written recommendations, instructions and specifications. Any damage which results because of purchaser's failure to perform such duties shall not be covered by this warranty. The cost of normal maintenance and normal replacement of service items such as filters, belts, etc. shall be paid by the purchaser.

**CONSEQUENTIAL DAMAGES** - The only remedies the purchaser has in connection with the breach or performance of any warranty on IMT products are those set forth above. In no event will the dealer, IMT or any company affiliated with IMT, be liable for business interruptions, loss of sales and/or profits, rental or substitute equipment, costs of delay or for any other special, indirect, incidental or consequential losses, costs or damages.

**REPRESENTATIONS EXCLUDED** - IMT products are subject to no expressed, implied or statutory warranty other than herein set forth, and no agent, representative or distributor of the manufacturer has any authority to alter the terms of this warranty in any way whatsoever or to make any representations or promises, express or implied, as to the quality or performance of IMT products other than those set forth above.

**CHANGE IN DESIGN** - IMT reserves the right to make changes in design or improvements upon its products without imposing any obligation upon itself to install the same upon its products theretofore manufactured.

Effective January, 1984

This parts manual is provided to the user to assist in servicing the equipment. It is the property of Iowa Mold Tooling Co., Inc. and, as such, may not be reproduced either whole or in part, whether by chemical, electrostatic, mechanical or photographic means without the expressed written permission of an officer of Iowa Mold Tooling Co., Inc. One manual is provided with each piece of new equipment and additional manuals may be obtained at a nominal price.

**IOWA MOLD TOOLING Co., Inc.**

BOX 189, GARNER, IA 50438-0189

TEL: 515-923-3711

PRODUCT SUPPORT FAX: 515-923-3674