

Parts Manual 108FGUB92 Utility Body

IOWA MOLD TOOLING CO., INC.
BOX 189, GARNER, IA 50438
515-923-3711

REVISED
03-01-90
03-12-91
10-02-91
08-03-92

Manual Part Number 99900344

PARTS ORDERING INFORMATION

Before placing an order, make certain the following information is recorded.
This information should then be given to an IMT representative when placing your order.

BODY MODEL NUMBER	
BODY SERIAL NUMBER	
DATE OF PURCHASE	

To more efficiently process your order, the following information determined in advance will be appreciated.

PART NUMBER, DESCRIPTION AND QUANTITY OF PARTS REQUIRED.

IF LEFT OR RIGHT SIDE IS APPLICABLE, PLEASE SPECIFY.

PLEASE, CONTACT IMT AT THE FOLLOWING ADDRESS:

**IOWA MOLD TOOLING CO., INC.
500 HWY 18 WEST
GARNER IOWA 50438
TELEPHONE: (515) 923 - 3711
FAX: (515) 923 - 2491**

TABLE OF CONTENTS

SECTION 1. Installation And Specifications

- 1-1. Reference Dimensions
- 1-2. Installation Kit
- 1-2. Component Weights
- 1-3. Floor Assemblies

SECTION 2. Body Components

- 2-1. Door Latch Components
- 2-1. Weatherstripping Components
- 2-2. Basic Body Components

SECTION 3. External Body Options

- 3-1. Bumper
- 3-1. Light Panel Kits
- 3-1. Wheelwell Liner Kit
- 3-2. Ladder Rack Kits
- 3-2. Grab Handle Kit
- 3-2. Wall Liner Kits
- 3-2. Basket Kit
- 3-2. Front Panel Kits
- 3-3. Tailgate Kits
- 3-3. Pintle Hook Assemblies

SECTION 4. Inside Compartment Options

- 4-1. 18 - Drawer Cabinet
- 4-1. Hanger Bracket Kit
- 4-1. Door Chain Stop Kits
- 4-2. Adjustable Shelves with Dividers
- 4-2. Adjustable Shelves without Dividers
- 4-3. Roll-out Tray Assembly
- 4-4. Full Length Shelf Kit
- 4-4. Rear Access Door Assembly
- 4-5. J-Hook Assembly
- 4-5. Adjustable Hook Assembly

SECTION 5. Transverse Compartment Options

- 5-1. Transverse Front Compartments
- 5-1. Roll-out Tray Rack
- 5-2. Roll-out Tray Assemblies

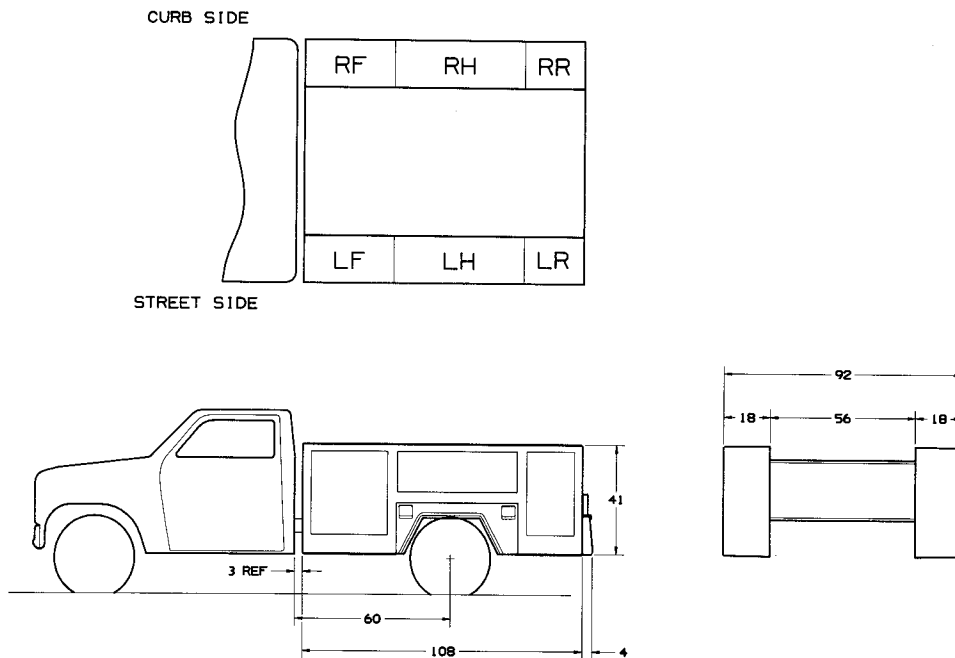
SECTION 6. Electrical Options

- 6-1. Light and Wiring Kit
- 6-2. Compartment Light Kit
- 6-2. Door Activated Switch Kit
- 6-3. Flood Light Kits - 12V
- 6-4. Switch Kits
- 6-5. Beacon Light Kit
- 6-5. Beacon Light Bracket
- 6-5. Outlet Kit - 110V

SECTION 7. Safety Equipment

- 7-1. I.C.C. Safety Kit
- 7-1. Fire Extinguishers
- 7-1. Backup Alarm

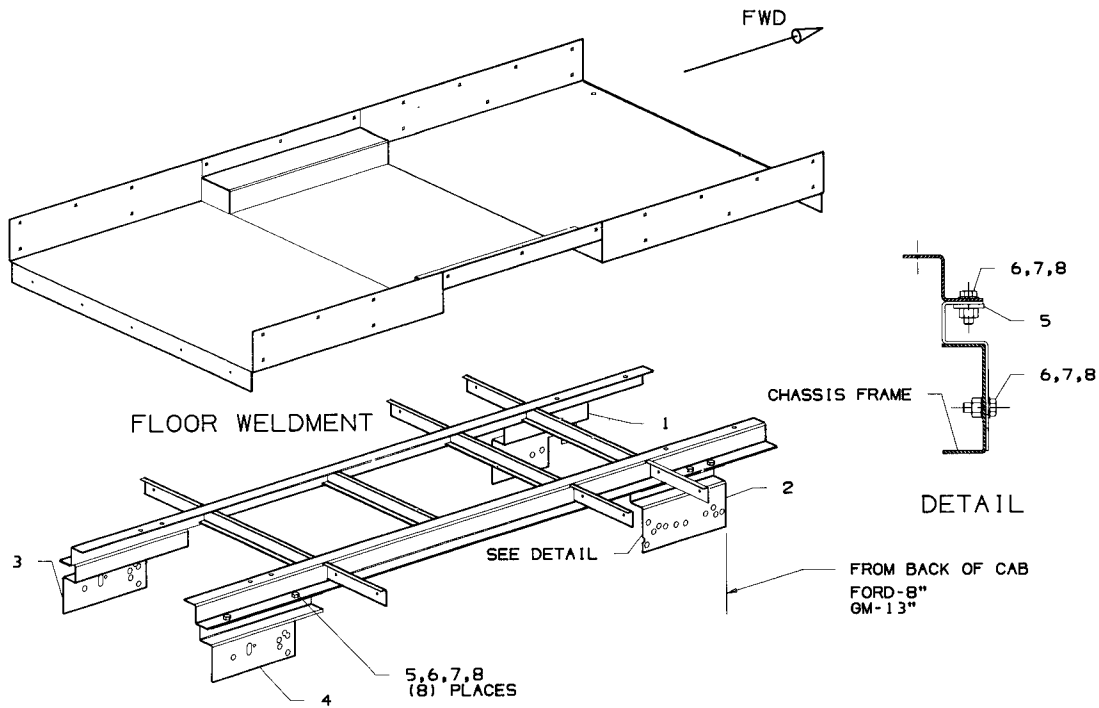
SECTION 1 Installation And Specifications



**Model 108FGUB92 Utility Body
REFERENCE DIMENSIONS**

	COMPARTMENT SIZE			DOOR OPENING	
	W	D	H	W	H
LF	34 1/2	16 1/2	39 3/4	29	31
LH	47	16 1/2	20 3/4	46	15 1/2
LR	23 1/2	16 1/2	39 3/4	18	31
RF	34 1/2	16 1/2	39 3/4	29	31
RH	47	16 1/2	20 3/4	46	15 1/2
RR	23 1/2	16 1/2	39 3/4	18	31

NOTE: DIMENSIONS MAY VARY SLIGHTLY DUE TO MOLD DRAFT ANGLES.



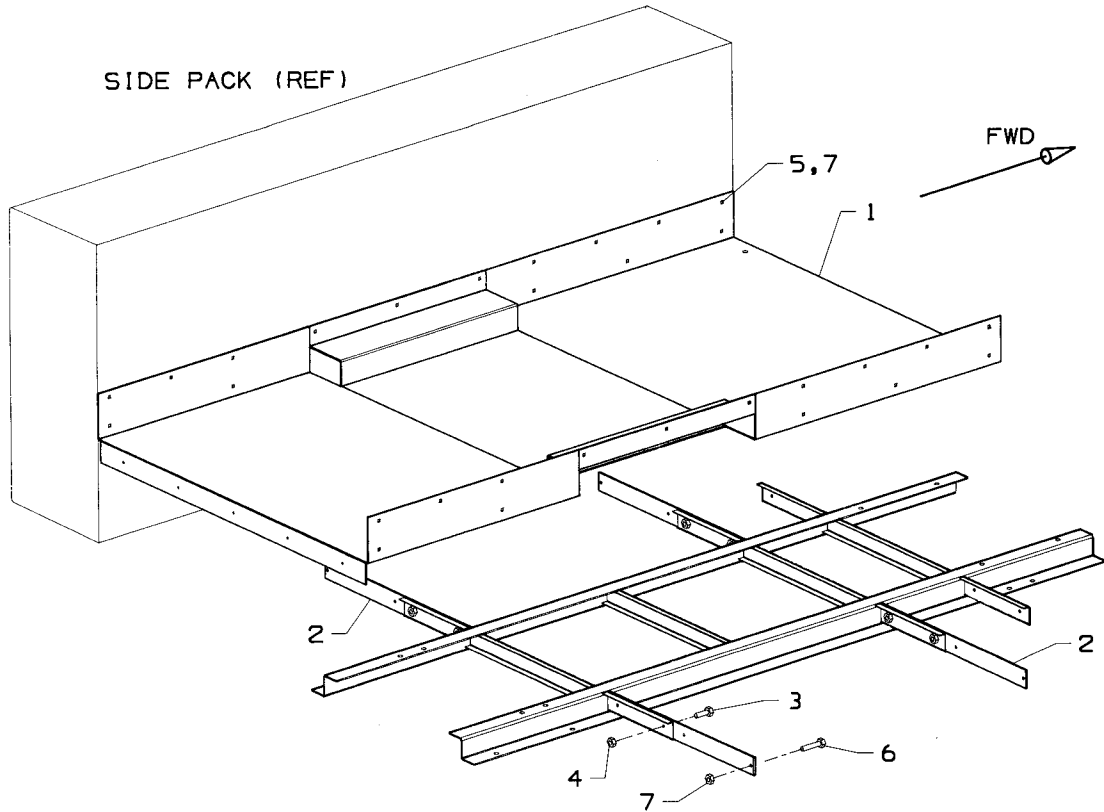
**INSTALLATION KIT (FORD AND GM)
PART NUMBER 51709262**

			A
1.	60111042	BRACKET - LF	1
2.	60111043	BRACKET - RF	1
3.	60113368	BRACKET - LR	1
4.	60113369	BRACKET - RR	1
5.	72063007	WASHER 5/8 WRT	8
6.	72060150	CAP SCREW 5/8-11 X 1 3/4 HH GR 5	16
7.	72062091	NUT 5/8-11 LOCK	16
8.	72063007	WASHER 5/8 WRT	24

COMPONENT WEIGHTS (LBS)*

SIDEPACK ASSEMBLY - LH	238	
SIDEPACK ASSEMBLY - RH	238	
FLOOR ASSEMBLY	STEEL 550	ALUMINUM 287
LIGHT PANEL	52	29
FRONT PANEL	34	20
LADDER RACK SET	22	14
BASKET ASSEMBLY	51	

NOTE: * ALL WEIGHTS HAVE BEEN ROUNDED TO THE NEAREST LB.

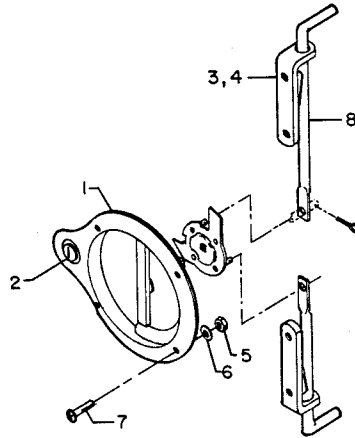


FLOORS

- A. STEEL 51709255
- B. ALUMINUM 51709269

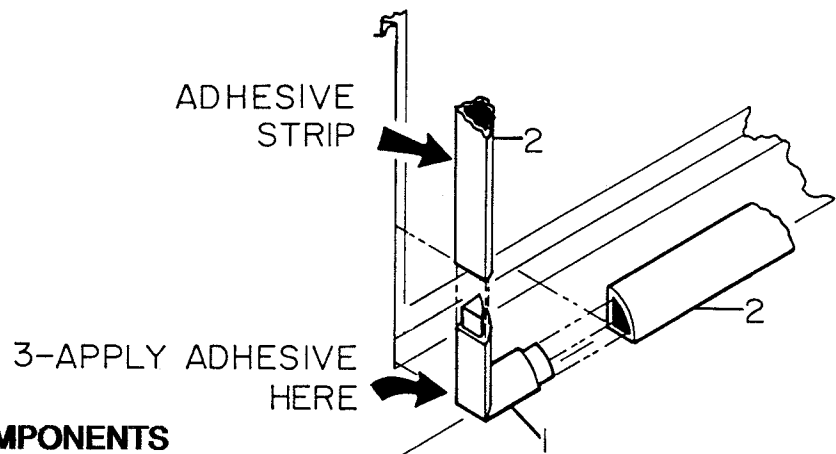
			A	B
1.	52709230	FLOOR - STL	1	
	52709266	FLOOR - AL		1
2.	60113362	SIDEPACK MTG BAR	4	4
3.	72601589	CAP SCREW 3/8-16 X 1 HH SS	8	8
4.	72062197	NUT 3/8-16 LOCK SS	8	8
5.	72062197	NUT 3/8-16 LOCK SS	38	38
6.	72601463	CAP SCREW 3/8-16 X 1 1/2 HH SS	8	8
7.	72601545	CARR. BOLT 3/8-16 X 1 1/4 SS	30	30

SECTION 2 Body Components



DOOR LATCH COMPONENTS 2 POINT LATCH SHOWN

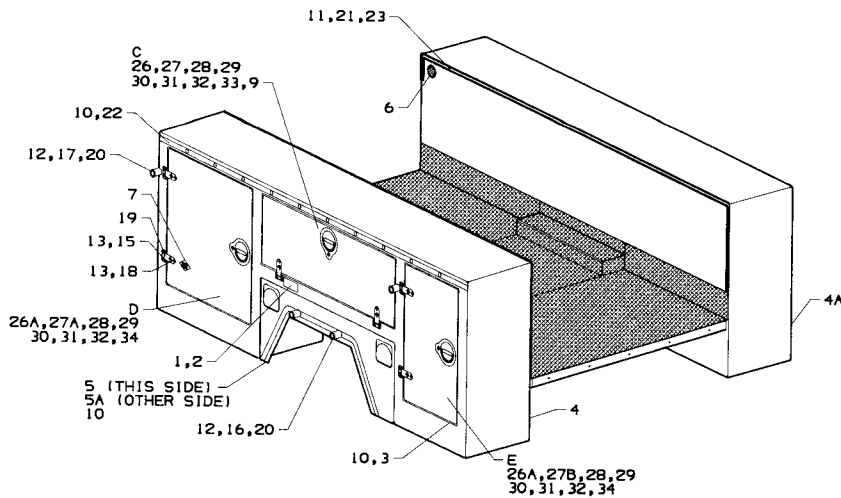
1. 72661273 LATCH - 3 PT (HORIZONTAL DOORS)
72661318 LATCH - 2 PT (VERTICAL DOORS)
2. 72661382 REPLACEMENT LOCK AND KEY
3. 70143131 ROD GUIDE 3/8"
4. 72061144 SHT MET SCREW #10-24 X 1/2 SS
5. 72062195 NUT #10-24 LOCK SS
6. 72063181 WASHER #10 WRT SS
7. 72061552 CAP SCREW #10-24 X 1 SS
8. 60112517 DOOR ROD 19 3/4"
60112516 DOOR ROD 15 1/2"



WEATHERSTRIPPING COMPONENTS

1. 70392639 WEATHERSTRIP CORNER MOLDINGS
2. 89392588 WEATHERSTRIP WITH ADHESIVE
3. 70067005 WEATHERSTRIP ADHESIVE - TUBE

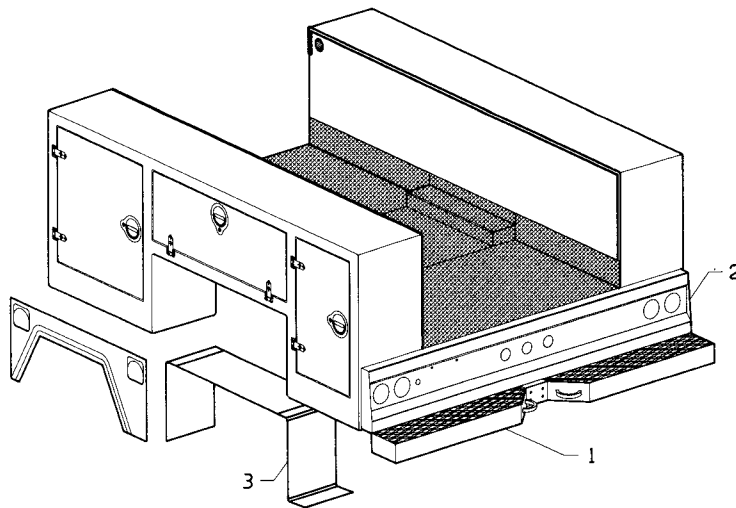
NOTE: WEATHERSTRIP ADHESIVE BACKING MUST BE APPLIED SO THAT THE DOOR COMPRESSES RATHER THAN SHEARS THE ADHESIVE STRIP. THE WEATHERSTRIP CORNERS ARE NOT ADHESIVE BACKED. AN APPROPRIATE ADHESIVE MUST BE USED.



**BODY ASSEMBLY
PART NUMBER 51709404**

	99900340	INSTALLATION DRAWING	1		
1.	70029119	SERIAL NUMBER PLACARD	1		
2.	72066341	POP RIVET	4		
A.	51709402	SIDE PACK ASM - LH	1		
B.	51709403	SIDE PACK ASM - RH	1		
			A	B	
3.	60112497	LATCH STRIKE PLATE	7	7	
4.	70034335	SIDE PACK SHELL - LH	1		
4A.	70034336	SIDE PACK SHELL - RH			1
5.	70034389	WHEELWELL PANEL - LH	1		
5A.	70034390	WHEELWELL PANEL - RH			1
6.	70143413	VENT - 3"	1	1	
7.	70391456	DECAL - IMT DIAMOND	1	1	
8.	70392639	WEATHERSTRIP CORNER (SEE PG. 2-1)	12	12	
9.	70393201	PLASTIC CAP 3/8	2	2	
10.	72061144	SCREW - SHTMET #10 X 1/2 SS	25	25	
11.	72061146	SCREW - SHTMET #6 X 3/8 SS	49	49	
12.	72062123	NUT - #10-24 LOCK SS	4	4	
13.	72062194	NUT 1/4-20 LOCK SS	24	24	
14.					
15.	72601549	CAP SCREW 1/4-20 X 1 1/2 SS	12	12	
16.	72601552	CAP SCREW #10-24 X 1 SS	2	2	
17.	72601572	CAP SCREW #10-24 X 2 SS	2	2	
18.	72601575	CAP SCREW 1/4-20 X 3/4 SS	12	12	
19.	72661308	HINGE - SS	6	6	
20.	76039990	RUBBER BUMPER	4	4	
21.	81029538	RUB RAIL - AL (SPECIFY LENGTH)			
22.	81029540	DRIP RAIL - AL (SPECIFY LENGTH)			
23.	89034326	RUBRAIL VINYL INSERT (SPECIFY LENGTH)			
24.	89039999	SAFETY TREAD (SPECIFY LENGTH)			
25.	89392588	WEATHERSTRIP (SEE PG. 2-1) (SPECIFY LENGTH)			
C.	51709406	DOOR ASM - HORIZONTAL	2	2	
D.	51709405	DOOR ASM - FRONT VERTICAL	2	2	
E.	51708503	DOOR ASM - REAR VERTICAL	2	2	
			C	D	E
26.	60112202	DOOR ROD - 23 1/4"	2		
26A.	60112516	DOOR ROD - 15 1/2"		2	2
27.	70034388	DOOR SHELL - HORIZONTAL	1		
27A.	70034387	DOOR SHELL - FRONT VERTICAL		1	
27B.	70034330	DOOR SHELL - REAR VERTICAL			1
28.	70143131	ROD GUIDE 3/8	2	2	2
29.	72061144	SCREW - SHT MET #10 X 1/2 SS	4	4	4
30.	72062195	NUT #10-24 LOCK SS	4	4	4
31.	72063181	WASHER #10 SS	4	4	4
32.	72601552	CAP SCREW #10-24 X 1 SS	4	4	4
33.	72661273	LATCH - 3 PT	1		
34.	72661318	LATCH - 2 PT		1	1

SECTION 3 External Body Options



1A. BUMPER KIT - FORD
1B. BUMPER KIT - GM

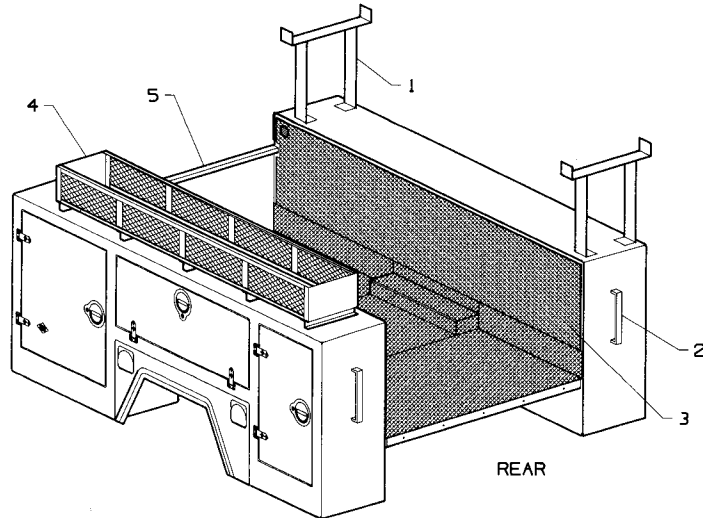
	1A	1B
1. 52709271 BUMPER ONLY	1	1

2A. LIGHT PANEL KIT - STEEL 51709253
2B. LIGHT PANEL KIT - ALUM 51709268

	2A	2B
1. 52709229 LIGHT PANEL - STL	1	
52709265 LIGHT PANEL - AL		1
2. 72062167 NUT 5/16-18 LOCK SS	13	13
3. 72601342 CAP SCREW 5/16-18 X 1 1/2 HH SS	13	13

3. WHEELWELL LINER KIT 51709383

1. 60113564 FRONT GUARD - LH	1	
2. 60113565 FRONT GUARD - RH	1	
3. 60113563 REAR GUARD	2	
4. 60113566 TOP GUARD	2	
5. 72062194 NUT 1/4-20 LOCK SS	10	
6. 72063166 WASHER 1/4 WRT SS	10	
7. 72601548 CAP SCREW 1/4-20 X 1 1/4 SS	10	



1A. LADDER RACK KIT - ALUMINUM 51709385
1B. LADDER RACK KIT - STEEL 51709163

			1A	1B
1.	52709384	RACK WELDMENT - ALUMINUM	2	
	52709136	RACK WELDMENT - STEEL		2
2.	60250100	REINFORCEMENT PLATE	2	
3.	72061145	SCREW - SHT MET #10 X 1/2 PH SS	8	
4.	72062197	NUT 3/8-16 LOCK SS	8	6
5.	72063165	WASHER 3/8 WRT SS	16	6
6.	72601463	CAP SCREW 3/8-16 X 1 1/2 HH SS	8	6
7.	72661316	LOOP - FOOTMAN	4	4

2. GRAB HANDLE KIT 51708291

1.	60112241	BACKING PLATE	2	
2.	72062194	NUT 1/4-20 LOCK SS	8	
3.	72063166	WASHER 1/4 WRT SS	8	
4.	72601549	SCREW - MACH 1/4-20 X 1 1/2 TRR PHH SS	8	
5.	72661269	HANDLE - CHROME	2	
6.	99900201	INSTALLATION DWG	1	

3A. WALL LINER KIT - STEEL 51709416
3B. WALL LINER KIT - ALUMINUM 51709417

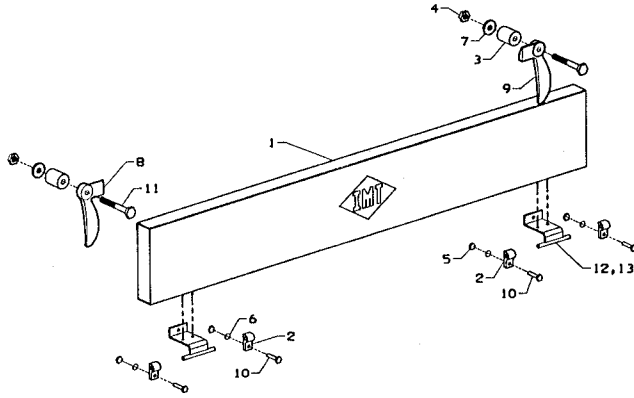
			3A	3B
1.	60113607	LINER - STREETSIDE STEEL	1	
	60250102	LINER - STREETSIDE ALUMINUM		1
2.	60113606	LINER - CURBSIDE STEEL	1	
	60250101	LINER - CURBSIDE ALUMINUM		1
3.	72062194	NUT 1/4-20 LOCK SS	16	16
4.	72063166	WASHER 1/4 SS	16	16
5.	72601548	CAP SCREW 1/4-20 X 1 1/4 SS	16	16

4. BASKET KIT 51709164

1.	52709135	BASKET 8 X 14 X 88	1	
2.	72062167	NUT 5/16 LOCK SS	10	
3.	72063152	WASHER 5/16 WRT SS	10	
4.	72601551	CAP SCREW 5/16-18 X 1 1/4 SS	10	

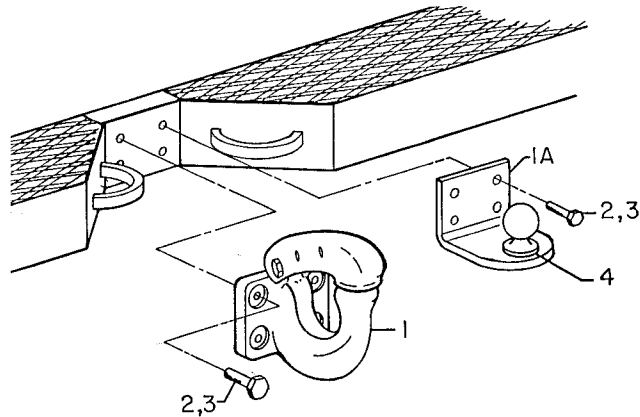
5A. FRONT PANEL KIT - STEEL 51709237
5B. FRONT PANEL KIT - ALUMINUM 51709267

			5A	5B
1.	60113372	PANEL - STEEL	1	
	60250076	PANEL - ALUMINUM		1
2.	72062167	NUT 5/16-18 LOCK SS	11	11
3.	72063152	WASHER 5/16 WRT SS	11	11
4.	72601551	CAP SCREW 5/16-18 X 1 1/4 SS	11	11



A. TAILGATE KIT - STEEL 51709169
B. TAILGATE KIT - ALUMINUM 51709168

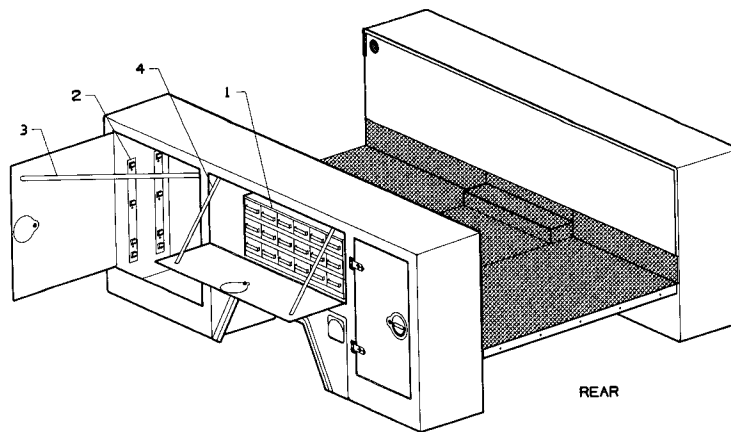
		A	B
1.	51708667 TAILGATE - STL	1	
	51708957 TAILGATE - AL		1
2.	60020053 HINGE - ONE HOLE BRASS	4	4
3.	60030180 SPACER	2	2
4.	72062166 NUT 1/2-13 LOCK SS 2	2	
5.	72062167 NUT 5/16-18 LOCK SS	4	4
6.	72063152 WASHER 5/16 WRT SS	4	4
7.	72063205 WASHER 1/2 FLAT SS	2	2
8.	72066368 LATCH - LH	1	1
9.	72066369 LATCH - RH	1	1
10.	72601342 CAP SCREW 5/16-18 X 1 1/2 HH SS	4	4
11.	72601555 CAP SCREW 1/2-13 X 4 HH SS	2	2
12.	52708666 HINGE PLATE WLDMT	2	2
13.	72661248 RIVET - STL .257 X .38 GRIP	6	6



A. BALL HITCH MOUNTING BRACKET KIT 51709472
B. PINTLE HITCH KIT - 2" CAST BALL 51709531
C. PINTLE HITCH KIT - PINTLE HOOK 51709517
D. PINTLE HITCH KIT - 2" REMOVABLE BALL 51709516

		A	B	C	D
1.	70731897 PINTLE HITCH - 2" CAST BALL		1		
	70731179 PINTLE HOOK			1	
	70731620 PINTLE HITCH - 2" REMOVABLE BALL				1
1A.	60113705 BALL HITCH MOUNTING BRACKET	1			
2.	72062232 NUT 1/2-13 HEX TOP LOCK GR8	4	4	4	4
3.	72601582 CAP SCREW 1/2-13 X 3 1/2 HH GR8	4	4	4	4
4.	70073648 BALL HITCH - 1 7/8" DIA	REF			REF
	70073649 BALL HITCH - 2" DIA	REF			REF
	70073650 BALL HITCH - 2 5/16" DIA	REF			REF

SECTION 4 Inside Compartment Options



1. 18 - DRAWER SMALL PARTS STORAGE CABINET 70732119
CABINET RISER KIT (REQUIRED FOR ABOVE) _____

2. HANGER BRACKET KIT 51709388

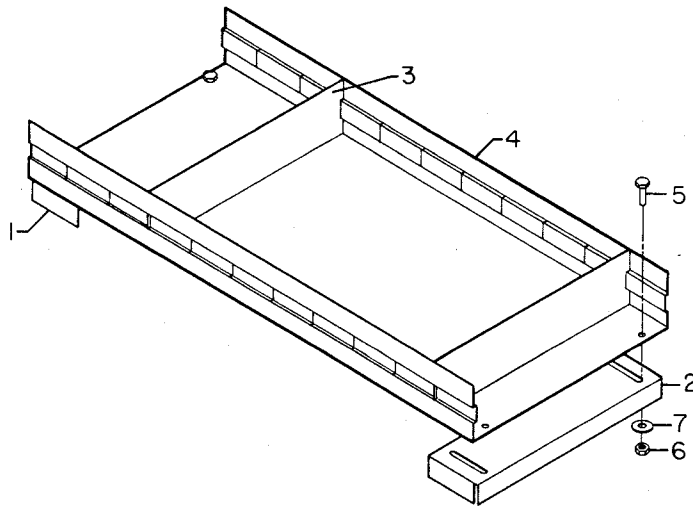
1.	60025378	HANGER BRACKET - AL	4
2.	72062194	NUT 1/4-20 LOCK SS	12
3.	72063166	WASHER 1/4 WRT SS	18
4.	72601548	CAP SCREW 1/4-20 X 1 1/4 SS	6
5.	72601549	CAP SCREW 1/4-20 X 1 1/2 SS	6

3. CHAIN STOP - VERTICAL DOOR 51709376

1.	60113554	CHAIN	1
2.	72061145	SHT MET SCREW #10 X 1/2 SS	2
3.	72066391	S - HOOK	1
4.	72601452	MACH SCREW #10-24 X 1 3/4 SS	1
5.	72661316	LOOP - FOOTMAN	1

4. CHAIN STOP - HORIZONTAL DOOR 51709375

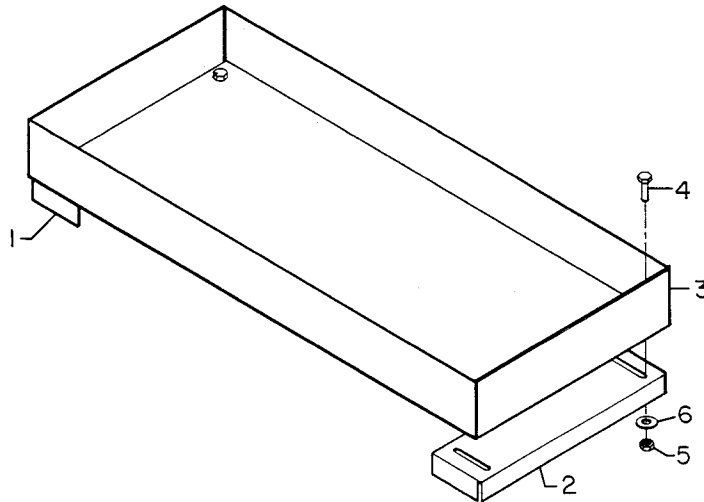
1.	60113553	CHAIN	2
2.	72061145	SHT MET SCREW #10 X 1/2 SS	4
3.	72066391	S - HOOK	2
4.	72601452	MACH SCREW #10-24 X 1 3/4 SS	2
5.	72661316	LOOP - FOOTMAN	2



ADJUSTABLE SHELVES w/DIVIDERS - ALUMINUM

- A. FRONT COMPARTMENT 51709044
- B. REAR COMPARTMENT 51709042
- C. HORIZONTAL COMPARTMENT 51709045

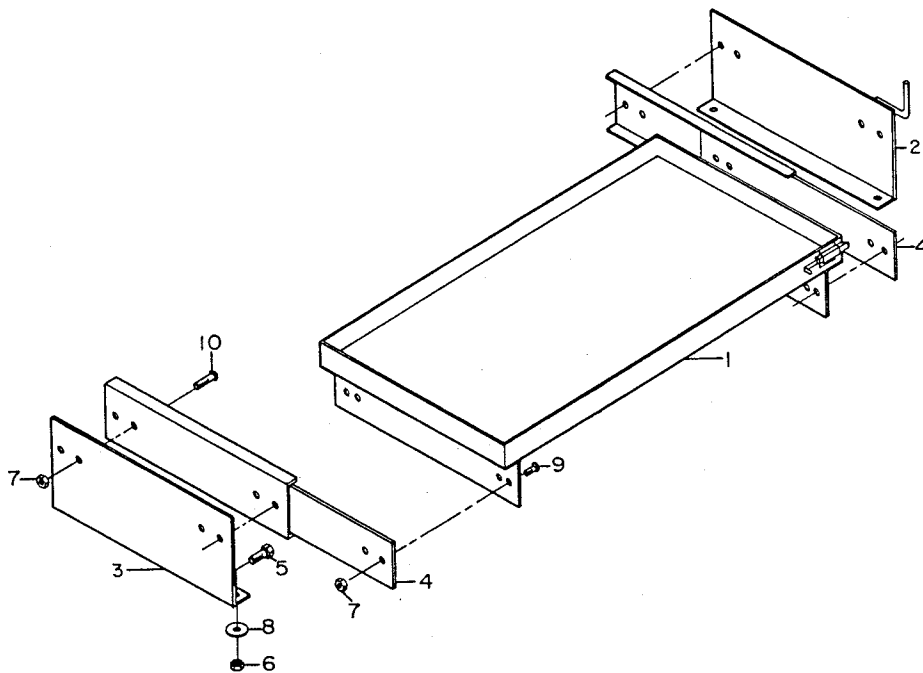
	A	B	C
1. 60250000 END - LH	1	1	1
2. 60250001 END - RH	1	1	1
3. 60250007 DIVIDER	6	6	8
4. 60250010 SHELF	1		
60250008 SHELF		1	
60250011 SHELF			1
5. 72601590 CAP SCREW 5/16-18 X 1 TRH PHH SS	4	4	4
6. 72062167 NUT 5/16-18 LOCK SS	4	4	4
7. 72063152 WASHER 5/16 WRT SS	4	4	4



ADJUSTABLE SHELVES - ALUMINUM

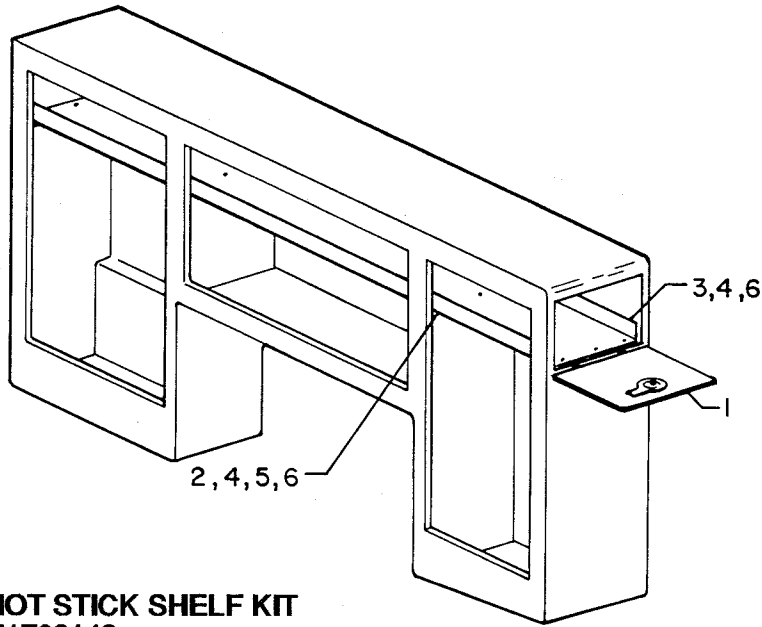
- A. FRONT COMPARTMENT 51709037
- B. REAR COMPARTMENT 51709035

	A	B
1. 60250000 END - LH	1	1
2. 60250001 END - RH	1	1
3. 60250004 SHELF	1	
60250002 SHELF		1
4. 72601590 CAP SCREW 5/16-18 X 1 TRH PHH SS	4	4
5. 72062167 NUT 5/16-18 LOCK SS	4	4
6. 72063152 WASHER 5/16 WRT SS	4	4



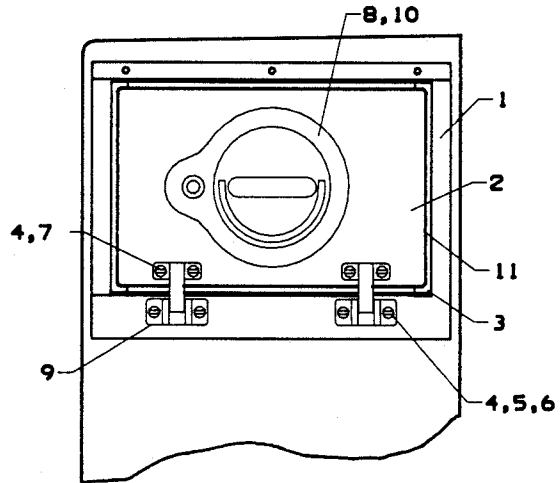
**ROLL-OUT TRAY ASSEMBLY (FRONT COMPARTMENT)
PART NUMBER 51709028**

1.	52709027	TRAY	1
2.	52709026	MOUNTING BRACKET	1
3.	60113124	MOUNTING BRACKET	1
4.	70731870	DRAWER SLIDE	2
5.	72601463	CAP SCREW 3/8-16 X 1 1/2 HH SS	4
6.	72062197	NUT 3/8-16 LOCK SS	4
7.	72062106	NUT #10-24 LOCK	16
8.	72063152	WASHER 5/16 WRT SS	4
9.	72601283	MACH SCREW #10-24 X 1/2 PANHDSL	8
10.	72601284	MACH SCREW #10-24 X 5/8 FLTHDSL	8



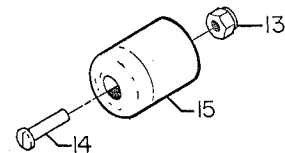
**FULL LENGTH HOT STICK SHELF KIT
PART NUMBER 51709143**

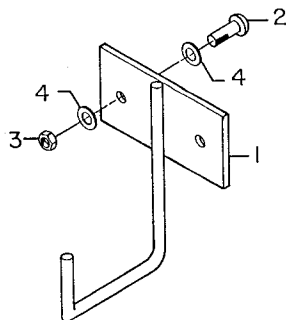
1.	51709186	DOOR ASM (SEE DWG)	1 REF
2.	60250041	MOUNTING BRACKET ANGLE	3
3.	70034357	SHELF	1
4.	72062222	NUT 1/4-20 CENTER LOCK	24
5.	72063001	WASHER 1/4 WRT	12
6.	72601548	CAP SCREW 1/4-20 X 1 1/4	24



**REAR ACCESS DOOR ASSEMBLY - 7 1/2" H X 15" W
PART NUMBER 51709186**

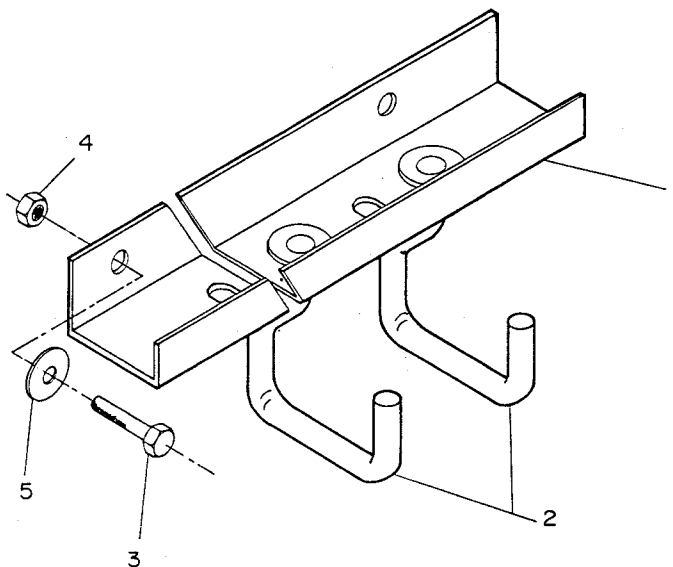
1.	52709185	DOOR FRAME	1
2.	60250044	DOOR PANEL	1
3.	70392639	WEATHERSTRIP CORNER	4
4.	72062123	NUT #10-24 LOCK SS	12
5.	72063123	WASHER #10 WRT	4
6.	72601008	STOVE BOLT #10-24 X 1 1/2 SS	4
7.	72601517	MACH SCREW #10-24 X 7/8 SS	4
8.	72601552	CAP SCREW #10-24 X 1 SS	4
9.	72661270	HINGE - CHROME	2
10.	72661273	LATCH	1
11.	89392588	WEATHERSTRIP W/ADHESIVE	27"
12.	99900250	INSTALLATION DRAWING	1
13.	72062123	NUT #10-24 LOCK SS	1
14.	72601572	CAP SCREW #10-24 X 2 SS	1
15.	76039990	RUBBER BUMPER	1





J - HOOK ASSEMBLY
PART NUMBER 51709374

1. 52709373 J - HOOK	1
2. 72601590 CAP SCREW 5/16-18 X 1 TRH PHH SS	2
3. 72062167 NUT 5/16-18 LOCK SS	2
4. 72063166 WASHER 1/4 WRT SS	4

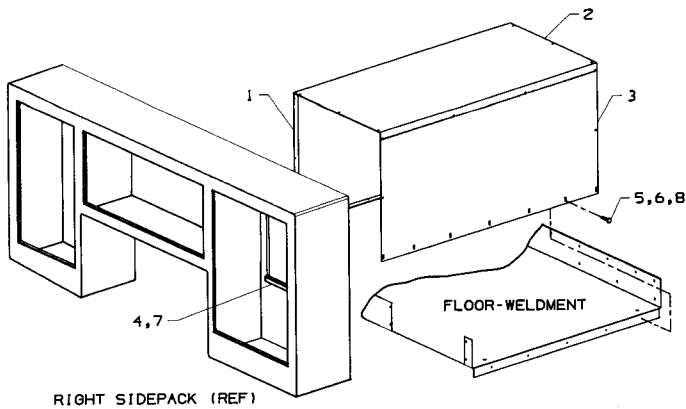


ADJUSTABLE HOOK ASSEMBLY
PART NUMBER 51709515

1. 60111134 HANGER BRACKET	1
2. 52707490 HOOK	2
3. 72601590 CAP SCREW 5/16-18 X 1 TRH PHH SS	2
4. 72062167 NUT 3/8-16 LOCK SS	2
5. 72063166 WASHER 1/4 WRT SS	2

SECTION 5

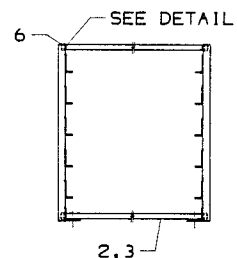
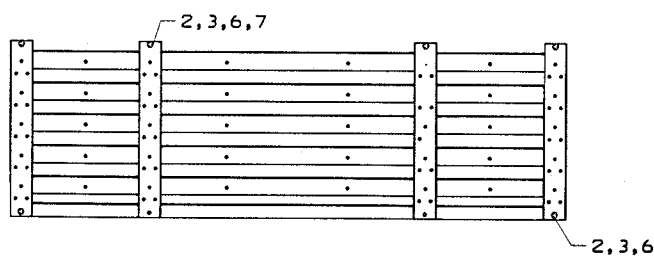
Transverse Compartment Options



TRANSVERSE FRONT COMPARTMENTS

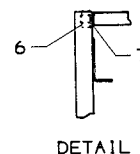
- A. STEEL 51709254**
B. ALUMINUM 51709292

		A	B
1.	60113383 BACK PANEL - STL	1	
	52709288 BACK PANEL - AL		1
2.	60113384 TOP PANEL - STL	1	
	60250079 TOP PANEL - AL		1
3.	60113415 FRONT PANEL - STL	1	
	60250080 FRONT PANEL - AL		1
4.	60250097 ANGLE	2	2
5.	72062167 NUT 5/16-18 LOCK SS	35	35
6.	72063152 WASHER 5/16 WRT SS	35	35
7.	72601283 MACH SCREW #10-24 X 1/2 PNH	6	6
8.	72601551 CAP SCREW 5/16-18 X 1 1/4 SS	35	35
9.	99900249 INSTALLATION DRAWING	1	1

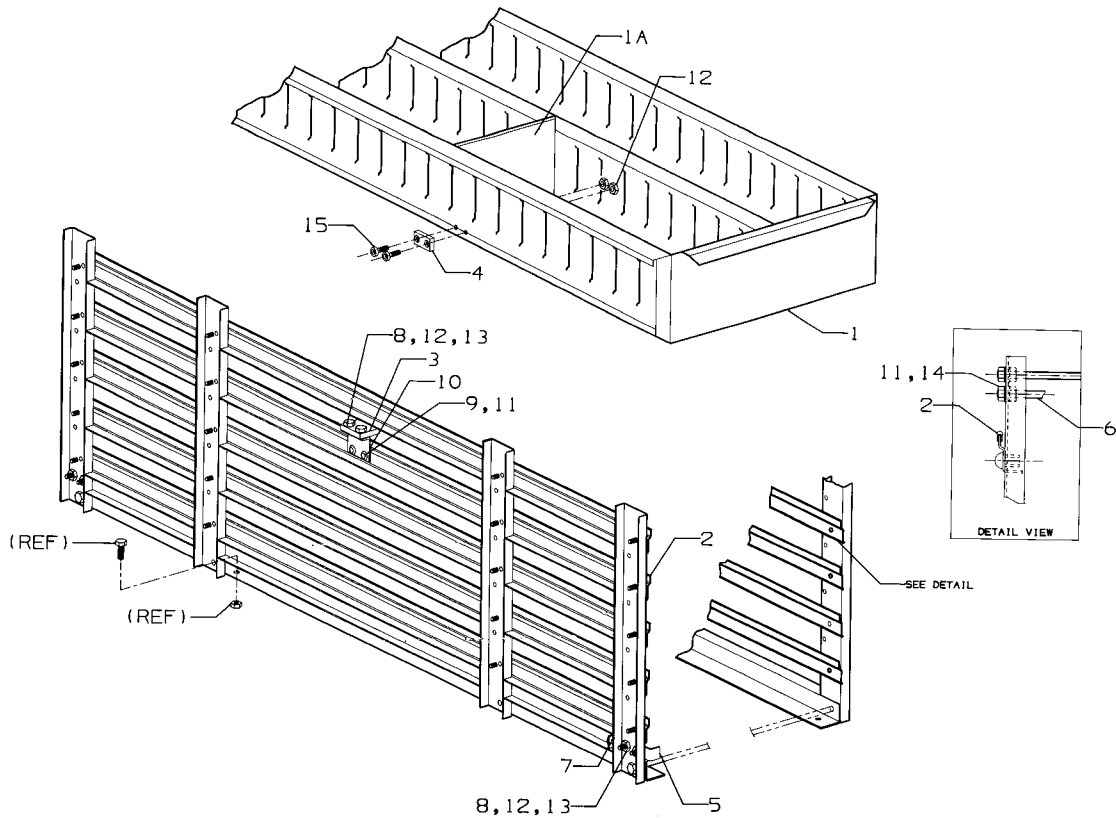


ROLL-OUT TRAY RACK PART NUMBER 51709347

1.	52709343 RACK	2
2.	60113455 PIPE	6
3.	60113456 THREADED ROD 7/16-14 X 28 1/4	6
4.	72601589 CAP SCREW 3/8-16 X 1 HH SS	8
5.	72062197 NUT 3/8-16 LOCK SS	8
6.	72062105 NUT 7/16-14 LOCK	12
7.	72063003 WASHER 3/8 WRT	8
8.	72063165 WASHER 3/8 FLAT SS	8



**NOTE: ITEMS 4, 5 AND 8 ARE USED FOR MOUNTING.
 THIS RACK ASSEMBLY WILL ACCOMODATE
 A MAXIMUM OF 20 INCHES OF TRAYS.**



ROLL-OUT TRAY ASSEMBLIES WITH CENTER DIVIDERS

A. 3 1/2" H X 86" D X 26" W (TOTAL HT. = 4")

51709363

B. 7 1/2" H X 86" D X 26" W (TOTAL HT. = 8")

51709364

ROLL-OUT TRAY ASSEMBLIES WITHOUT CENTER DIVIDER

C. 3 1/2" H X 86" D X 26" W (TOTAL HT. = 4")

51709361

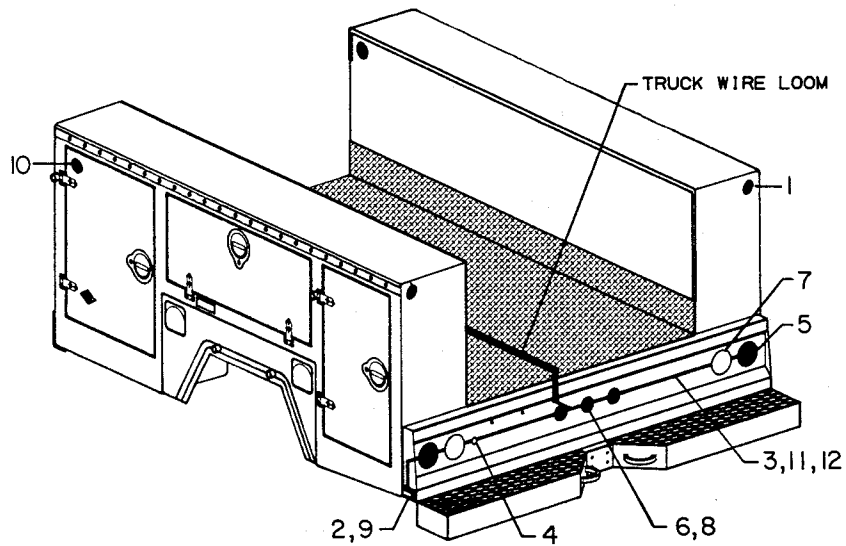
D. 7 1/2" H X 86" D X 26" W (TOTAL HT. = 8")

51709362

		A	B	C	D
1.	52709336 DRAWER	1			
	52709337 DRAWER		1		
	52709321 DRAWER			1	
	52709322 DRAWER				1
1A.	60250094 ADJUSTABLE DIVIDER-3 3/8 X 11 15/16	*			
	60250096 ADJUSTABLE DIVIDER-7 3/8 X 11 15/16		*		
	60250090 ADJUSTABLE DIVIDER - 3 3/8 X 24			*	
	60250092 ADJUSTABLE DIVIDER - 7 3/8 X 24				*
2.	70034386 WEAR STRIP	168"	168"	168"	168"
3.	60030198 DRAWER STOP - CENTER	2	2	2	2
4.	60030199 DRAWER STOP - SIDE	1	1	1	1
5.	60113452 DRAWER STOP - END	2	2	2	2
6.	60113538 THREADED ROD 3/8-16 X 6 1/4	2	2	2	2
7.	70393070 RUBBER BUMPER	2	2	2	2
8.	72060026 CAP SCREW 5/16-18 X 1 1/4 HH GR5	8	8	8	8
9.	72060046 CAP SCREW 3/8-16 X 1 HH GR5	4	4	4	4
10.	60113764 BRACKET	2	2	2	2
11.	72062103 NUT 3/8-16 LOCK	12	12	12	12
12.	72062109 NUT 5/16-18 LOCK	10	10	10	10
13.	72063002 WASHER 5/16 WRT	8	8	8	8
14.	72063152 WASHER 5/16 WRT SS	4	4	4	4
15.	72601376 CAP SCREW 5/16-18 X 1 BTNHD	2	2	2	2
16.	99900311 INSTALLATION DRAWING	1	1	1	1

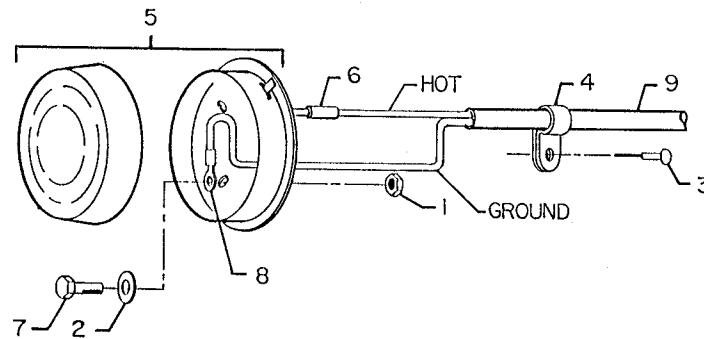
NOTE: * SPECIFY QUANTITY, ARE NOT INCLUDED WITH TRAY ASSEMBLIES. THE RACK ASSEMBLY WILL ACCOMODATE A MAXIMUM OF 20" OF TRAY ASSEMBLIES.

SECTION 6 Electrical Options



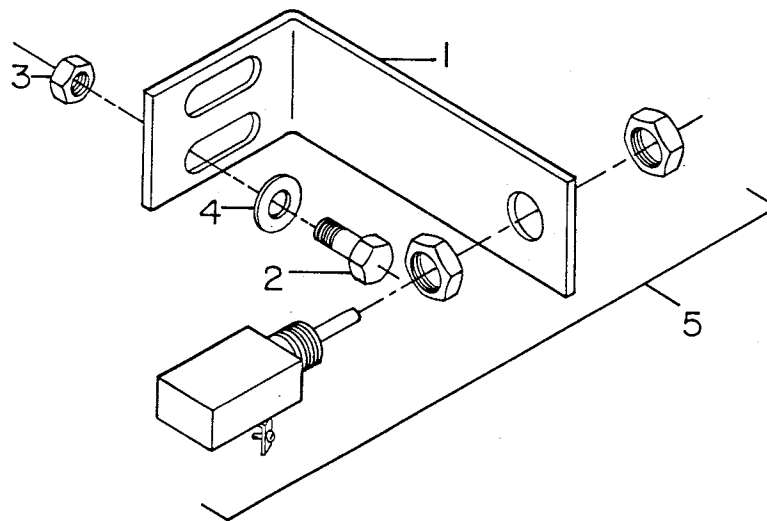
**LIGHT AND WIRING KIT (TRUCK-LITE)
PART NUMBER 51709181**

1.	70039057	RED REFLECTOR	4
2.	70732196	TRUCK-LITE ADAPTER KIT	2
3.	72066340	POP RIVET	3
4.	77040006	LICENSE PLATE LIGHT	1
5.	77040179	TAIL LIGHT - RED	2
6.	77040182	LIGHT - RED	3
7.	77040190	BACK-UP LIGHT	2
8.	77040245	GROMMET KIT	3
9.	77040262	CLEARANCE LIGHT - RED	2
10.	70039058	REFLECTOR - AMBER	2
11.	77044463	WIRING HARNESS - REAR	1
12.	72066533	HOSE CLAMP - VINYL 1/2"	3



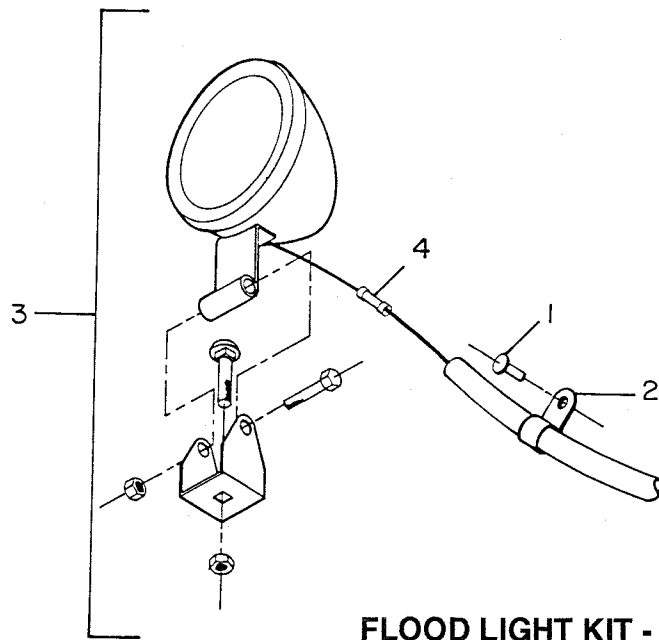
**COMPARTMENT LIGHT KIT
PART NUMBER 51709492**

1. 72062123 NUT #10-24 LOCK SS	3
2. 72063181 WASHER #10 WRT SS	6
3. 72066340 POP RIVET 1/8 X 3/8	10
4. 72066534 CLAMP - VINYL	10
5. 77040017 LIGHT	1
6. 77040049 BUTT CONNECTOR	1
7. 72601452 CAP SCREW #10-24 X 1 3/4 TRH PHH SS	3
8. 77040000 TERMINAL - RING #10	1
9. 89044371 CABLE - 14GA/3WIRE X 96"	1



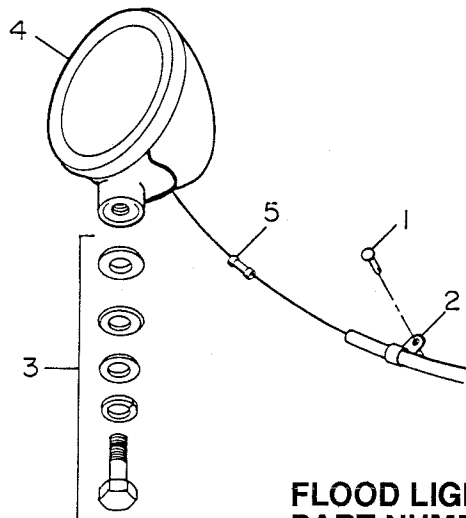
**DOOR ACTIVATED SWITCH KIT
PART NUMBER 51709514**

1. 60111003 BRACKET	1
2. 72061548 CAP SCREW 1/4-20 X 1 1/4 TRH PHH SS	2
3. 72062194 NUT 1/4-20 LOCK SS	2
4. 72063166 WASHER 1/4 WRT SS	4
5. 77041015 SWITCH	1
6. 77040048 BUTT CONNECTOR	2
7. 77040051 TERMINAL	2



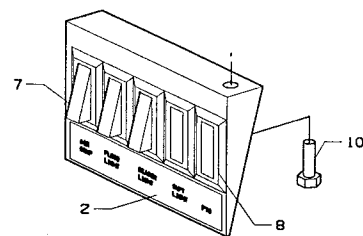
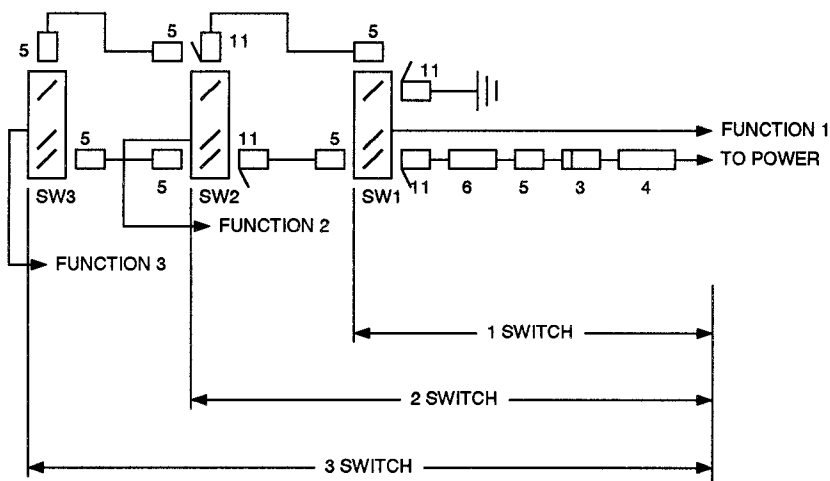
**FLOOD LIGHT KIT - 12 VOLT - 5" DIAMETER
PART NUMBER 51706357**

1.	72066340	POP RIVET 1/8 X 3/8'	10
2.	72066534	CLAMP	10
3.	77040026	FLOOD LIGHT - BLACK	1
4.	77040049	BUTT CONNECTOR	1
5.	89044234	WIRE - 14GA YELLOW X 180"	1
6.	89044351	LOOM - .33 ID X 180"	1



**FLOOD LIGHT KIT - 12 VOLT - 6 1/2" DIAMETER
PART NUMBER 51707613**

1.	72066340	POP RIVET 1/8 X 3/8'	10
2.	72066534	CLAMP	10
3.	77040280	MOUNTING KIT	1
4.	77040281	FLOOD LIGHT - CHROME	1
5.	77040049	BUTT CONNECTOR	1
6.	89044234	WIRE - 14GA YELLOW X 180"	1
7.	89044351	LOOM - .33 ID X 180"	1

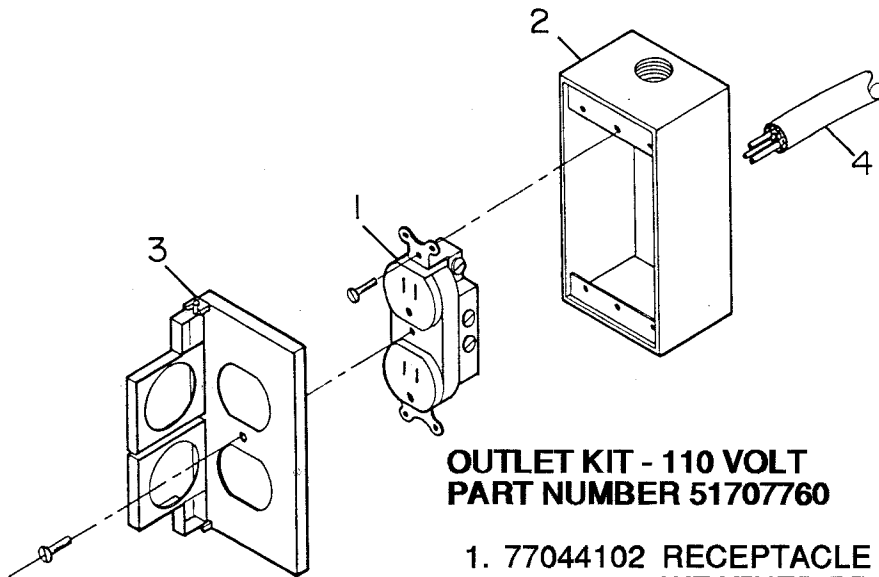


LIGHT SWITCH KITS

- A. 1-SWITCH 51706353
 B. 2-SWITCH 51706354
 C. 3-SWITCH 51706355

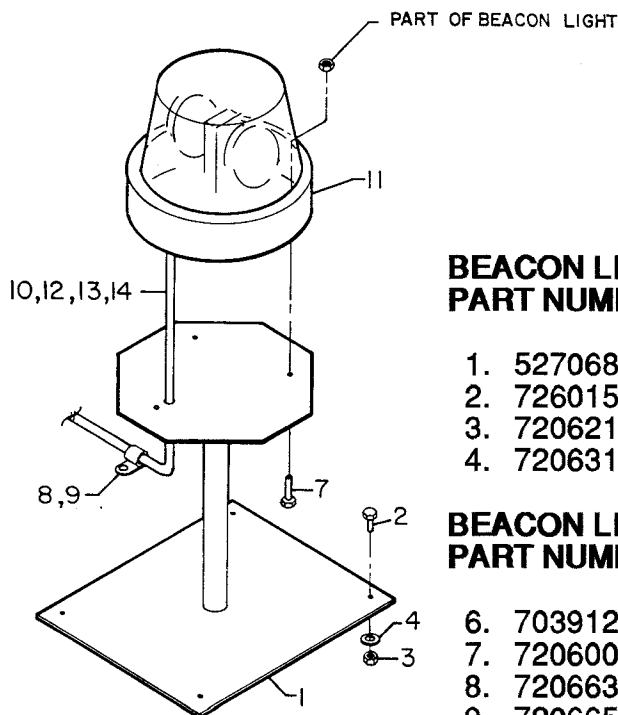
	A	B	C
1. 70034376 SWITCH BRACKET	1	1	1
2. 70393153 DECAL (SEE NOTE)	1	1	1
3. 77040047 TERMINAL-MSLPON 1/4 TAB	1	1	1
4. 77040048 BUTTCONNECTOR	1	1	1
5. 77040147 TERMINAL-FSLPON 1/4 TAB	3	5	7
6. 77041056 FUSE 20AMP IN-LINE	1	1	1
7. 77041386 SWITCH-SGL POLE LIT	1	2	3
8. 77041387 SWITCH PLATE-BLANK	4	3	2
9. 89044232 WIRE 14GA RED	SPEC LENGTH		
10. 72061144 SHT MTL SCR #10X1/2	2	2	2
11. 77040137 TERMINAL #12-10 1/4 TAB	2	2	4
12. 89044274 WIRE 14GA BLK(GRD-NOT SHOWN)	SPEC LENGTH		
13. 89044271 WIRE 14GA BLU(NOT SHOWN)	SPEC LENGTH		
14. 77040053 TERMINAL RING (NOT SHOWN)	1	1	1

NOTE: DECAL (ITEM 2) PROVIDES 5 FUNCTIONS, CUT AS REQD.



**OUTLET KIT - 110 VOLT
PART NUMBER 51707760**

1.	77044102	RECEPTACLE WITH GROUND	1
2.	77044106	WEATHER PROOF BOX	1
3.	77044251	WEATHER PROOF COVER	1
4.	89044072	CABLE - 12GA/3 WIRE X 216"	1



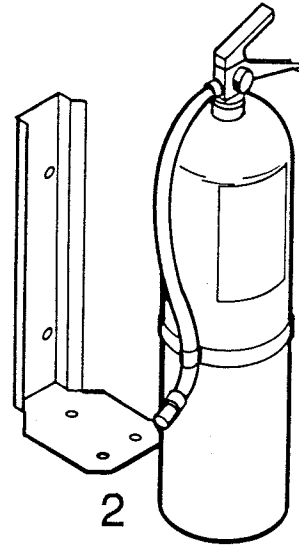
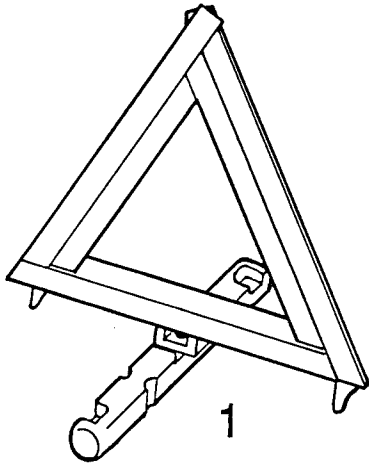
**BEACON LIGHT BRACKET KIT
PART NUMBER 51706816**

1.	52706817	BRACKET	1
2.	72601548	CAP SCREW 1/4-20 X 1 1/4 TRH PHH SS	4
3.	72062194	NUT 1/4-20 HEX SS	4
4.	72063166	WASHER 1/4 WRT SS	4

**BEACON LIGHT KIT
PART NUMBER 51706358**

6.	70391251	DECAL - BEACON LIGHT	1
7.	72060004	CAP SCREW 1/4-20 X1 HH GR5	3
8.	72066340	POP RIVET	14
9.	72066534	HOSE CLAMP - VINYL	14
10.	77040000	TERMINAL - RING #10	1
11.	77040013	AMBER BEACON LIGHT	1
12.	77040048	BUTT CONNECTOR	1
13.	89044234	WIRE - 14GA YELLOW	20'
14.	89044351	LOOM	20'

SECTION 7 Safety Equipment

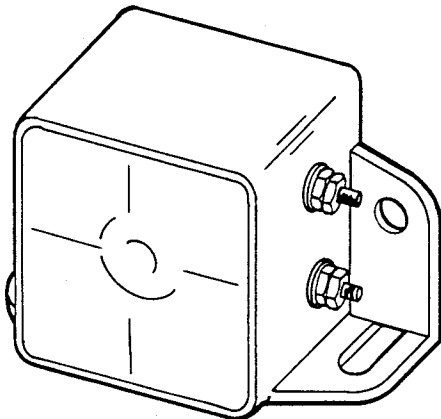


I.C.C. SAFETY KIT PART NUMBER 92091010

- | | | | |
|----|----------|----------------------------------|---|
| 1. | 70073146 | TRIANGULAR REFLECTOR KIT | 1 |
| | | (Includes 3 reflectors and case) | |
| 2. | 70073147 | FIRE EXTINGUISHER | 1 |
| | | (with bracket) | |

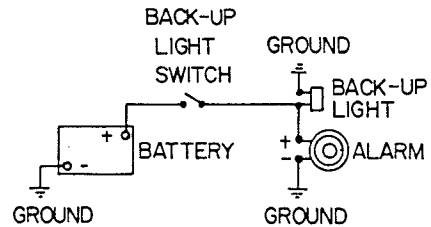
INDIVIDUAL FIRE EXTINGUISHERS

- | | |
|----------|----------------------------------|
| 70073622 | FIRE EXTINGUISHER - 10 LB W/BRKT |
| 70073091 | FIRE EXTINGUISHER - 20 LB W/BRKT |

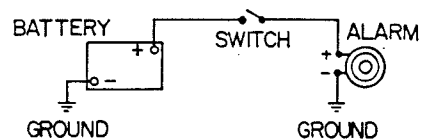


ELECTRIC BACKUP ALARM PART NUMBER 77040020

INSTALLATION WITH BACK-UP LIGHT
NEGATIVE GROUND



INSTALLATION WITH SWITCH
NEGATIVE GROUND



NOTE: USE 5/16" MOUNTING SCREWS AND LOCK NUTS (NOT INCLUDED).
SEE INSTALLATION INSTRUCTIONS WHICH ACCOMPANY ALARM.

MANUFACTURER'S LIMITED WARRANTY

WARRANTY COVERAGE - Products manufactured by Iowa Mold Tooling Co., Inc. (IMT) are warranted to be free from defects in material and workmanship, under proper use, application and maintenance in accordance with IMT's written recommendations, instructions and specifications as follows:

1. Ninety (90) days; labor on IMT workmanship from the date of delivery to the end user.
2. One (1) year; original IMT parts from the date of delivery to the end user.

IMT's obligation under this warranty is limited to, and the sole remedy for any such defect shall be the repair or replacement (at IMT's option) of unaltered parts returned to IMT, freight prepaid, provided such defect occurs within the above stated warranty period and is reported within fourteen (14) days of its occurrence.

IMPLIED WARRANTY EXCLUDED - This is the only authorized IMT warranty and is in lieu of all other express or implied warranties or representations, including any implied warranties of merchantability or fitness for any particular purpose or of any other obligations on the part of IMT.

ITEMS EXCLUDED - The manufacturer gives no warranty on any components or parts purchased by the manufacturer, and such components as are covered only by the warranties of their respective manufacturers.

WARRANTY CLAIMS - Warranty claims must be submitted and shall be processed in accordance with IMT's established warranty claim procedure.

WARRANTY SERVICE - Warranty service will be performed by any IMT distributor authorized to sell new IMT products of the type involved or by any IMT Service Center authorized to service the type of product involved or by IMT in the event of direct sales made by IMT. At the time of requesting warranty service, the purchaser must present evidence of the date of delivery of the product. The purchaser shall pay any premium for overtime labor requested by the purchaser, any charge for making service calls and for transporting the equipment to the place where warranty work is performed.

WARRANTY VOIDED - All obligations of IMT under this warranty shall be terminated: (1) if service other than normal maintenance or normal replacement of service items is performed by someone other than an authorized IMT dealer, (2) if product is modified or altered in ways not approved by IMT.

PURCHASER'S RESPONSIBILITY - This warranty covers only defective material and workmanship. It does not cover depreciation or damage caused by normal wear, accident, improper protection in storage, or improper use. The purchaser has the obligation of performing the care and maintenance duties discussed in IMT's written recommendations, instructions and specifications. Any damage which results because of purchaser's failure to perform such duties shall not be covered by this warranty. The cost of normal maintenance and normal replacement of service items such as filters, belts, etc. shall be paid by the purchaser.

CONSEQUENTIAL DAMAGES - The only remedies the purchaser has in connection with the breach or performance of any warranty on IMT products are those set forth above. In no event will the dealer, IMT or any company affiliated with IMT, be liable for business interruptions, loss of sales and/or profits, rental or substitute equipment, costs of delay or for any other special, indirect, incidental or consequential losses, costs or damages.

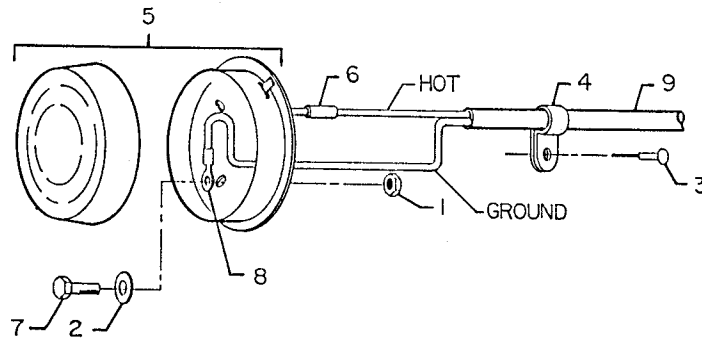
REPRESENTATIONS EXCLUDED - IMT products are subject to no expressed, implied or statutory warranty other than herein set forth, and no agent, representative or distributor of the manufacturer has any authority to alter the terms of this warranty in any way whatsoever or to make any representations or promises, express or implied, as to the quality or performance of IMT products other than those set forth above.

CHANGE IN DESIGN - IMT reserves the right to make changes in design or improvements upon its products without imposing any obligation upon itself to install the same upon its products theretofore manufactured.

Effective January, 1984

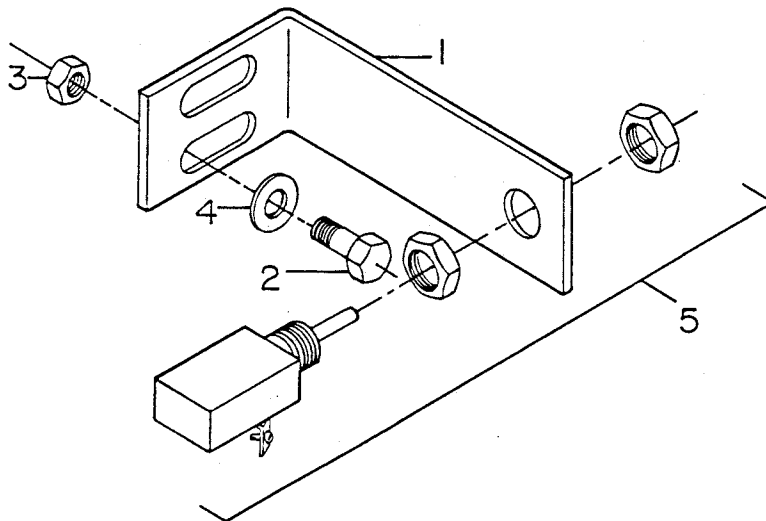
This parts manual is provided to the user to assist in servicing the equipment. It is the property of Iowa Mold Tooling Co., Inc and, as such, may not be reproduced either whole or in part, whether by chemical, electrostatic, mechanical or photographic means without the expressed written permission of an officer of Iowa Mold Tooling Co., Inc. One manual is provided with each piece of new equipment and additional manuals may be obtained at a nominal price.

IOWA MOLD TOOLING Co., Inc.
BOX 189, GARNER, IA 50438
515-923-3711



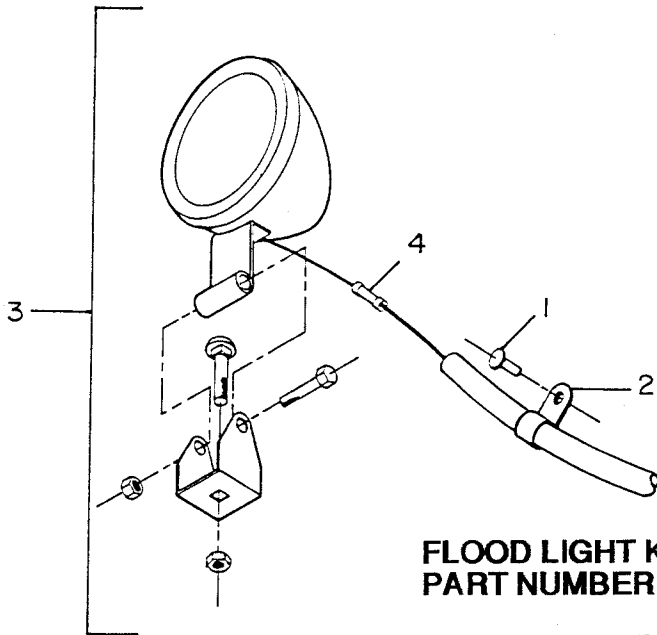
**COMPARTMENT LIGHT KIT
PART NUMBER 51709492**

1. 72062123 NUT #10-24 LOCK SS	3
2. 72063181 WASHER #10 WRT SS	6
3. 72066340 POP RIVET 1/8 X 3/8	10
4. 72066534 CLAMP - VINYL	10
5. 77040017 LIGHT	1
6. 77044054 SPLICE	1
7. 72601452 CAP SCREW #10-24 X 1 3/4 TRH PHH SS	3
8. 77040000 TERMINAL - RING #10	1
9. 89044371 CABLE - 14GA/3WIRE X 96"	1



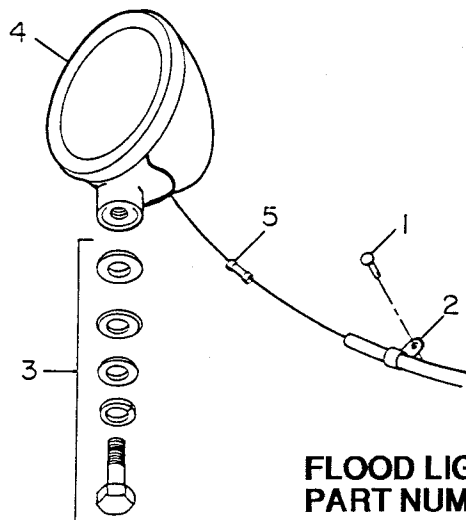
**DOOR ACTIVATED SWITCH KIT
PART NUMBER 51709514**

1. 60111003 BRACKET	1
2. 72061548 CAP SCREW 1/4-20 X 1 1/4 TRH PHH SS	2
3. 72062194 NUT 1/4-20 LOCK SS	2
4. 72063166 WASHER 1/4 WRT SS	4
5. 77041015 SWITCH	1
6. 77040048 BUTT CONNECTOR	2
7. 77040051 TERMINAL	2



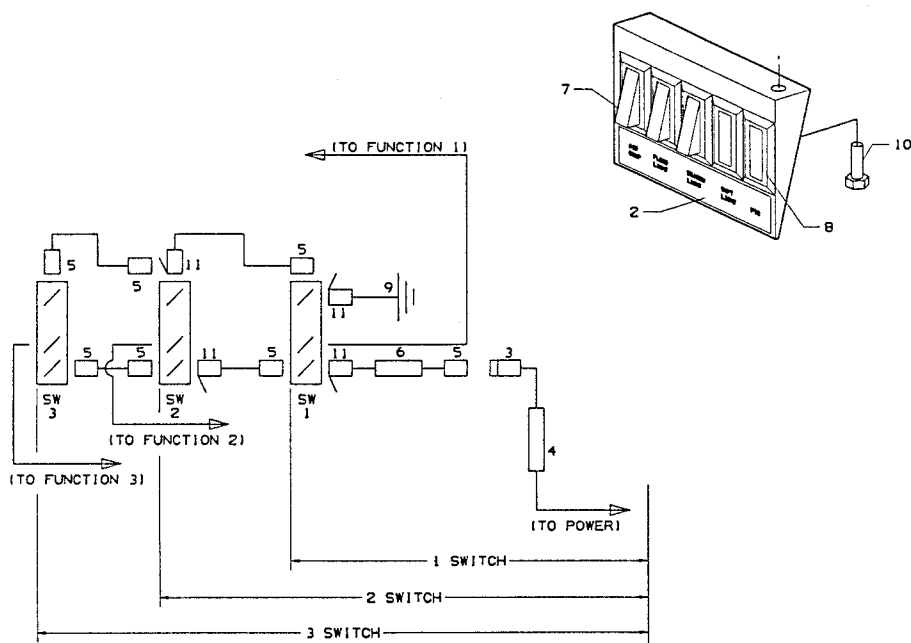
**FLOOD LIGHT KIT - 12 VOLT - 5" DIAMETER
PART NUMBER 51706357**

- | | | | |
|----|----------|---------------------------|----|
| 1. | 72066340 | POP RIVET 1/8 X 3/8' | 10 |
| 2. | 72066534 | CLAMP | 10 |
| 3. | 77040026 | FLOOD LIGHT - BLACK | 1 |
| 4. | 77044054 | SPLICE | 1 |
| 5. | 89044234 | WIRE - 14GA YELLOW X 180" | 1 |
| 6. | 89044351 | LOOM - .33 ID X 180" | 1 |



**FLOOD LIGHT KIT - 12 VOLT - 6 1/2" DIAMETER
PART NUMBER 51707613**

- | | | | |
|----|----------|---------------------------|----|
| 1. | 72066340 | POP RIVET 1/8 X 3/8' | 10 |
| 2. | 72066534 | CLAMP | 10 |
| 3. | 77040280 | MOUNTING KIT | 1 |
| 4. | 77040281 | FLOOD LIGHT - CHROME | 1 |
| 5. | 77044054 | SPLICE | 1 |
| 6. | 89044234 | WIRE - 14GA YELLOW X 180" | 1 |
| 7. | 89044351 | LOOM - .33 ID X 180" | 1 |

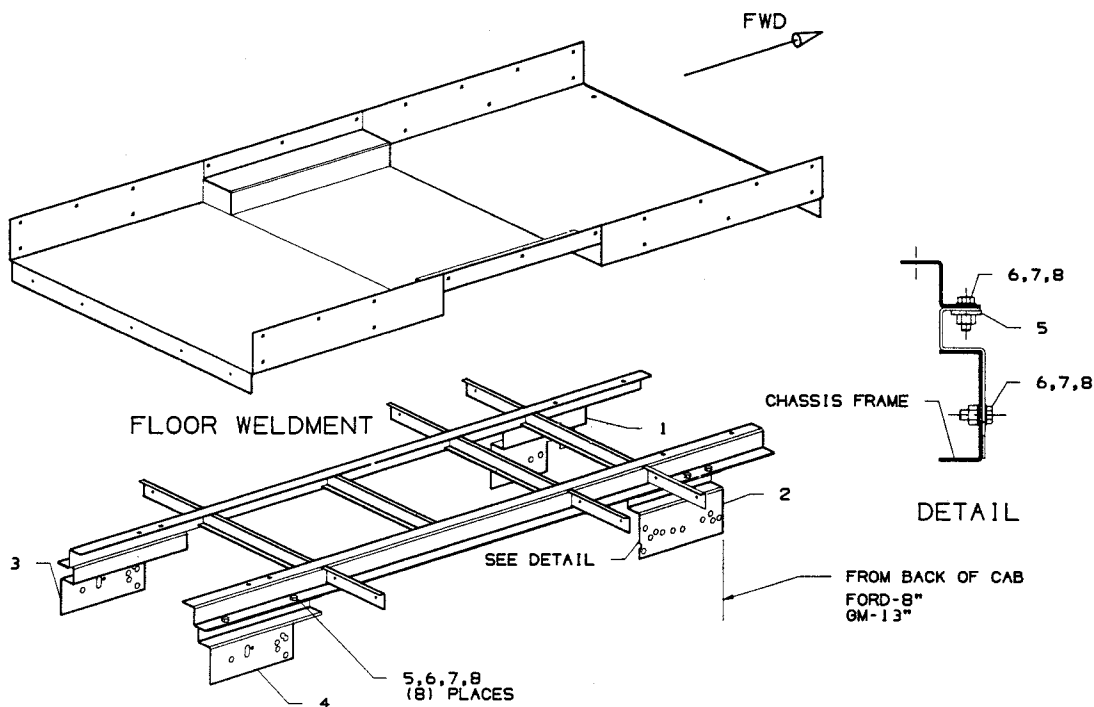


LIGHT SWITCH KITS

- A. 1-SWITCH PART NUMBER 51706353**
B. 2-SWITCH PART NUMBER 51706354
C. 3-SWITCH PART NUMBER 51706355

	A	B	C
1. 70034376 SWITCH BRACKET	1	1	1
2. 70393153 DECAL (SEE NOTE)	1	1	1
3. 77040047 TERMINAL - MSLPON 1/4 TAB	1	1	1
4. 77040048 TERMINAL - BUTT CONNECTOR	1	1	1
5. 77040147 TERMINAL - FSLPON 1/4 TAB	3	5	7
6. 77041056 FUSE - IN LINE 20AMP	1	1	1
7. 77041386 SWITCH - SINGLE POLE LIT	1	2	3
8. 77041387 SWITCH PLATE - BLANK	4	3	2
9. 89044212 WIRE 18GA BLK	SPECIFY LENGTH		
10. 72061144 SCREW - SHT MET #10 X 1/2	2	2	2
11. 77040137 TERMINAL #12-10 1/4 TAB		2	4

NOTE: DECAL (ITEM 2) PROVIDES 5 FUNCTIONS,
CUT AS REQUIRED.



**INSTALLATION KIT (FORD AND GM)
PART NUMBER 51709262**

			A
1.	60111042	BRACKET - LF	1
2.	60111043	BRACKET - RF	1
3.	60113368	BRACKET - LR	1
4.	60113369	BRACKET - RR	1
5.	60113382	TAB	8
6.	72060150	CAP SCREW 5/8-11 X 1 3/4 HH GR 5	16
7.	72062091	NUT 5/8-11 LOCK	16
8.	72063007	WASHER 5/8 WRT	24

COMPONENT WEIGHTS (LBS)*

SIDEPACK ASSEMBLY - LH	238	
SIDEPACK ASSEMBLY - RH	238	
FLOOR ASSEMBLY	STEEL 550	ALUMINUM 287
LIGHT PANEL	52	29
FRONT PANEL	34	20
LADDER RACK SET	22	14
BASKET ASSEMBLY	51	

NOTE: * ALL WEIGHTS HAVE BEEN ROUNDED TO THE NEAREST LB.