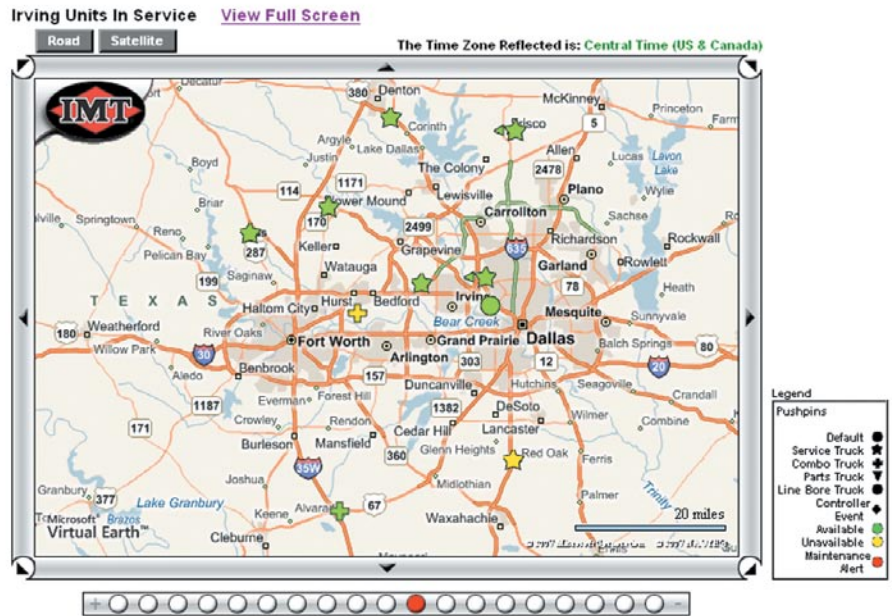


VALUEPLUS

Fleet ManagementSM



Run the most profitable service fleet possible with our fleet management software.

Knowledge isn't only power, it's profit — and the more you know about your fleet, the more profitable you'll be. That's why our ValuePlus Fleet ManagementSM is an indispensable tool for your operation. It provides the data you need to reduce operating expenses, maximize component utilization, and develop efficient and cost-effective replacement cycles.

As a GPS-enabled, Web-based application, ValuePlus compiles this information automatically, eliminating manual data entry. The result: up-to-the-minute statistics about mileage, usage hours for every component, a breakdown of planned vs. actual miles, and much more. ValuePlus also sends notices of preventive-maintenance schedules, and recommends a maintenance program based on each truck's work history. The bottom line: ValuePlus Fleet Management offers relevant information that leads to greater profits.

Features

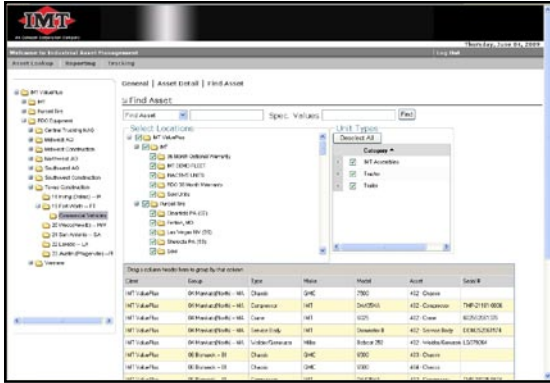
- Summaries of operating costs for individual units and locations
- Automated vehicle data collection (location, hours, mileage)
- Planned maintenance reminders
- Individual unit profiles and utilization analysis
- Electronic Web-based reporting
- Similar unit comparisons
- Daily operations and mapping
- Historical interactive database

Benefits

- Improves fleet performance and overall productivity
- Reduces direct operating expenses
- Reduces exposure to risk and liability
- Increases profit margin

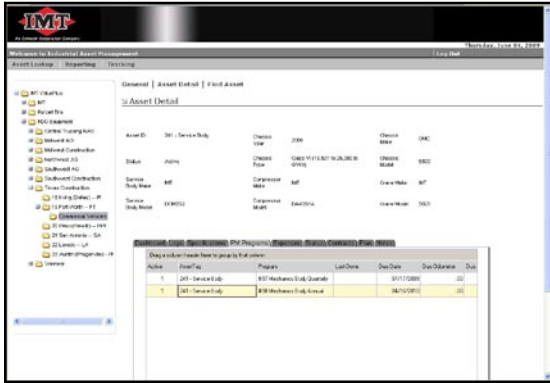


An Oshkosh Corporation Company



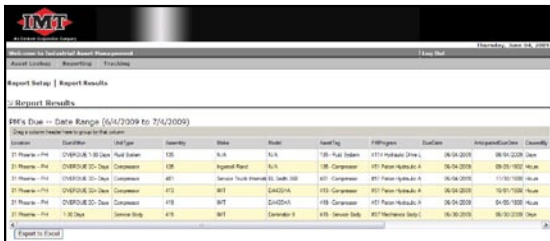
Asset Finder

This page lets you find maintenance instructions for each piece of your equipment: body, crane, chassis, compressor, etc.



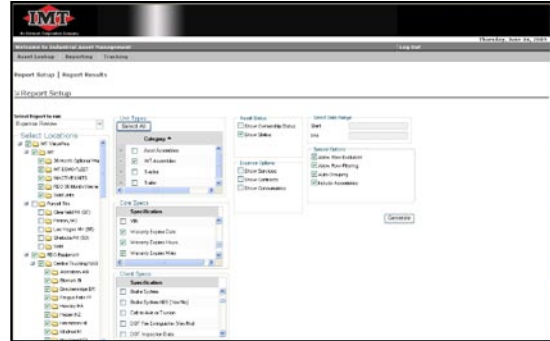
Asset Finder (continued)

Click on PM Program Detail to see what preventive maintenance steps need to be taken for each piece of equipment. You can search by date, by equipment, or by location. Click on Asset Detail to find serial numbers, VINs, driver names, and other pertinent equipment information.



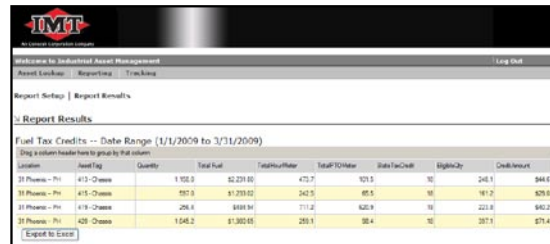
PMs Due

To keep your fleet in top condition, consult this report and find out when preventive maintenance is due on any piece of equipment in your fleet.



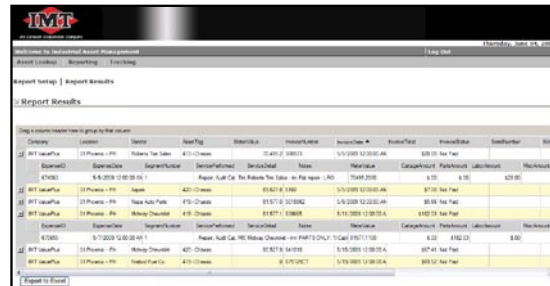
Report Generation

This page lets you create and print reports for all your equipment or just one piece. These reports can show daily invoices, expense reviews, and downtime reports for each piece of equipment.



Fuel Tax Credits

This page helps you meet monthly, quarterly, and yearly reporting duties by helping you build a fuel-tax credit report for each chassis.



Invoice History

This report shows the invoice history for individual trucks and the entire fleet, letting you see what work has been invoiced, what's been paid, and what's still owed.

Iowa Mold Tooling Co., Inc.

500 Highway 18 West • P.O. Box 189 • Garner, Iowa 50438-0189
800-247-5958 • 641-923-3711 • Fax: 641-923-6063 • www.imt.com

IMT reserves the right to make changes in engineering, design, and specifications; add improvements; or discontinue manufacturing at any time without notice or obligation. IMT and the IMT LOGO are registered trademarks or trademarks of Iowa Mold Tooling Co., Inc., Garner, IA, USA.

ValuePlus Fleet Management is a service mark of Iowa Mold Tooling Co., Inc.

© 2009 Iowa Mold Tooling Co., Inc. All Rights Reserved.